



The levelling-off and recent rapid decline in population density of the highly prolific invasive lionfish on the Saba Bank, Eastern Caribbean

Adolphe O. Debrot · Thomas Brunel ·
Ayumi Kuramae Izioka

Received: 18 August 2022 / Accepted: 12 June 2023
© The Author(s) 2023

Abstract Since its introduction in the Western Atlantic more than 30 years ago, the lionfish (*Pterois volitans/miles* complex) has spread throughout the Gulf of Mexico, the Caribbean and the Western Tropical Atlantic, with massive and unprecedented ecological impacts. This invasion is among the most studied marine fish invasions but very little is still really known about the population dynamics of the species and the factors ultimately governing its abundance. The species was first documented on the Saba Bank in 2010 and rapidly increased in abundance till the end of 2014. In this note we document its rise and subsequent decline in density and thereby describe the species' third apparent local population boom-bust event for the Greater Caribbean. We also

document gradual increases in the mean size of lionfish of the Eastern Caribbean Saba Bank that coincided with the increase and subsequent decline in abundance. Contrary to the previously documented epizootic disease outbreak associated with the population crash observed in the Gulf of Mexico we were unable to find any signs of the occurrence of epizootic disease. We suggest that the population decline on the Saba Bank might have been due to non-local causes. Boom-bust dynamics are often witnessed in biological invasions and have critical implications for both understanding and managing invasive species. While the underlying cause for the boom-bust event we document remains unknown, our work suggests that in the region, ecological feedback mechanisms are gradually developing that can help level-off deleterious population excesses of this invasive species.

Supplementary Information The online version contains supplementary material available at <https://doi.org/10.1007/s10530-023-03110-7>.

A. O. Debrot (✉) · T. Brunel
Wageningen Marine Research, Wageningen UR, P.O.
Box 57, 1780 AB Den Helder, The Netherlands
e-mail: dolfi.debrot@wur.nl

A. O. Debrot
Marine and Animal Ecology Group, Department
of Animal Sciences, Wageningen University, Building
107, Droevendaalsesteeg 1, 6708 PB Wageningen,
The Netherlands

A. K. Izioka
Saba Conservation Foundation, P.O. Box 18,
The Bottom, Saba, Dutch Caribbean, The Netherlands

Keywords Marine fish invasion · Boom-bust

Introduction

Non-native invasive species are a major threat to marine biodiversity worldwide, including that of the marine protected areas of the Dutch Caribbean where 27 exotic and cryptogenic marine species have been previously recorded for one or more islands of the Dutch Caribbean (Debrot et al. 2011). Two models of invasion kinetics have been proposed (Boudourisque and Verlaque 2012). These are the “natural

fluctuation model” whereby an invading species will gradually increase and stabilize at a “plateau” in density and the “boom-bust model”, whereby an invading species will increase rapidly after invasion (“boom”) to later decline in abundance and density to a much lower (“bust”) level. Especially in the boom-bust model, “settling in” after the initial expansion phase may occur with population crashes due to any number of ecosystem feed-backs such as evolutionary limits (Lankau et al. 2009), low genetic diversity of the founding population (Boudouresque and Verlaque 2012), competition (Moore et al. 2012), habitat limitations (Larson et al. 2019), or pathogens (LeBrun et al. 2022).

The Indo-Pacific lionfish (*Pterois volitans/miles* complex) is a highly prolific and invasive species that has become well-established in the Greater Caribbean marine environment. It has been documented to prey on large numbers of juvenile native Caribbean fishes and crustaceans and is expected to have serious detrimental effects on native coral reef fish populations, even affecting or endangering endemic undescribed fish faunas (Tornabene and Baldwin 2017). Since their first release into the wild in Florida likely dating from 1985, the species has spread throughout the Caribbean and is now establishing itself in tropical Brazil (Luiz et al. 2021). The lionfish is capable of rapid population growth after establishment and is one of the most successful and most-studied marine fish invasions documented so far (Côté and Smith 2018). While apparent population “levelling-off” was first witnessed for the lionfish in the Bahamas in 2012 (Benkwitt et al. 2017), population crashes of up to 75% have been observed in the Gulf of Mexico associated with a high rate of incidence of an ulcerative skin lesion (Harris et al. 2020). Similar population crashes have not yet been reported for the rest of the Caribbean. On the Saba Bank in the Eastern Caribbean, lionfish were not reported from commercial snapper and lobster trap catches prior to 2008 (Toller and Lundvall 2008, Toller et al. 2010; Williams et al. 2010), but in or just before 2010, when the species was first reported as bycatch in the fisheries (Debrot et al. 2011). In this paper we report the rapid rise and subsequent population decline of lionfish for the Saba Bank as documented on the basis of lionfish Catch per Unit of Effort (CPUE) in the bank’s commercial trap fisheries and present limited data on size-frequency developments and skin lesion

infection rates. In doing so we present some rare new evidence of the species showing signs of ecological “settling-in” in the Caribbean Sea, after three decades of purely expanding populations.

Methods and materials

The Saba Bank

In this study we assessed lionfish on the Saba Bank, a large 2200 km² submarine plateau southwest of the island of Saba. It is located 3–5 km southwest of Saba and 25 km west of St. Eustatius in the Dutch Caribbean (Fig. 1). Water depth varies between 20 and 50 m for most of the bank, except for an area of about 230 km² along its eastern margin, which lies at depths of 10–20 m (Toller et al. 2010). The surrounding sea floor goes to depths of about 1000 m. Most coral development is found in a narrow band of 55 km along the eastern and south-eastern edges of the bank. The bank lies fully within the Dutch Kingdom’s Caribbean Exclusive Economic Zone waters. In recent years, it has gained international recognition as an area of exceptional biodiversity value and been accorded increasingly higher and more extensive conservation status. For instance, in 2012 it was accorded “Particularly Sensitive Sea Area” status by the International Maritime Organization which forbids tanker traffic, while in 2015 it became part of the “Yarari Marine Mammal and Shark Sanctuary”, emphasizing its value to both endangered cetaceans and sharks (Debrot et al. 2017).

Saba Bank fisheries

In recent years the fleet size of Saba involved in fishing on the bank has generally fluctuated between eight and ten Maine lobster boats, of 9–12 m length, operating all year round. Basic data on catch, effort, species composition and length frequency of the fishery were collected weekly by Saba Bank Management Unit as described by de Graaf et al. (2017) and Brunel et al. (2021). The West-Indian spiny lobster, *Panulirus argus*, is the most important targeted species and is fished with lobster traps (West-Indian arrowhead traps) up to depths of 45 m. This fishery began during the 1980s with the advent of mass-tourism on St. Maarten. The second-most important

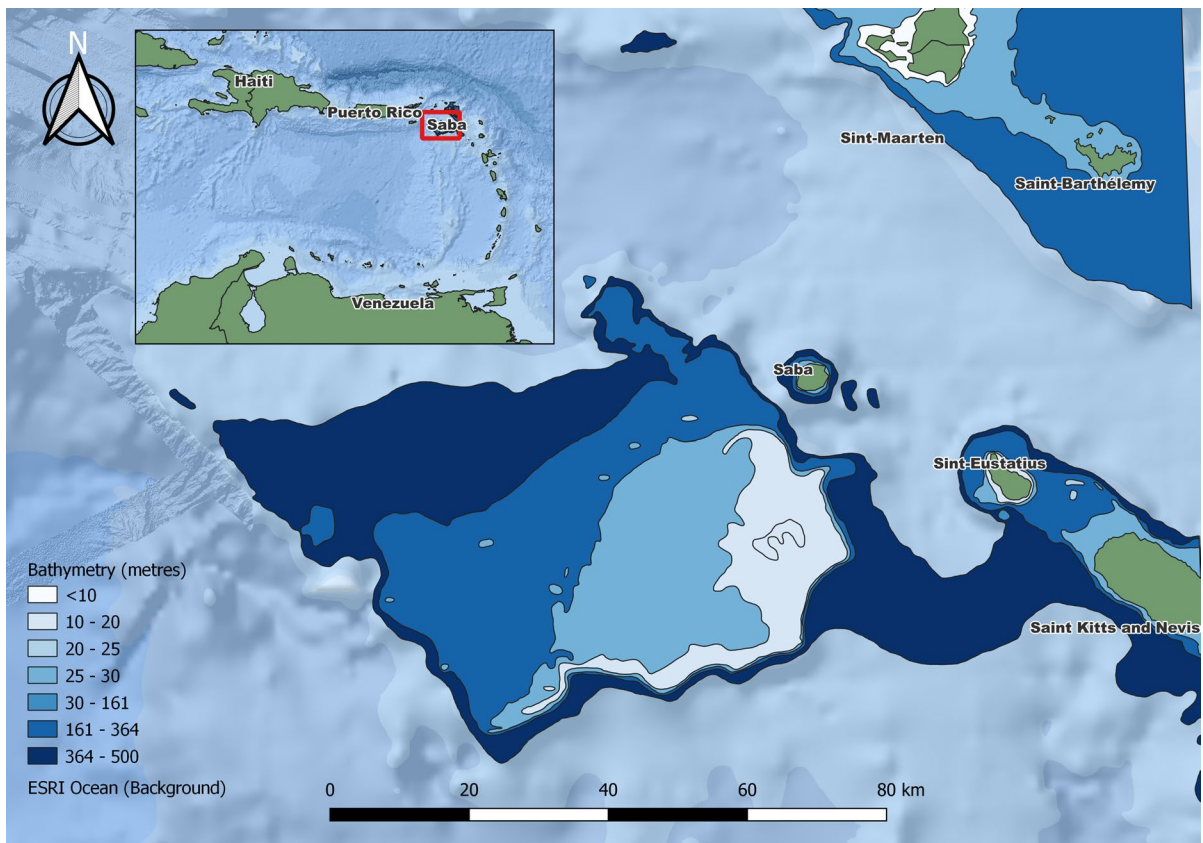


Fig. 1 Map of the Western Tropical Atlantic showing the location of the Saba Bank in the Eastern Caribbean

fishery is the “redfish” (snapper) fishery which is also largely conducted using the same traps but at deeper depths (de Graaf et al. 2017). These are typically deployed at depths of 50–250 m and catch mainly silk snapper, *Lutjanus vivanus*, followed by blackfin snapper, *Lutjanus buccanella*, and vermillion snapper, *Rhomboplites aurorubens* (Brunel et al. 2021). These are the only two fisheries taking lionfish on the bank as a limited part of the bycatch. The traps are made of coated wire mesh, with mesh sizes of 1 × 2 to 2 × 2 inch (2.5–5 cm). Fish and lobster traps differ in funnel size, with the funnel of fish traps being narrower and longer. Salted cow hides (20 × 20 cm), are used as bait and are attached inside the traps with plastic-coated wires (Toller and Lundvall 2008).

Fisheries data

Since 2012, the fisheries on Saba Bank are monitored through a survey-based monitoring program

conducted from the sole fishing port of Saba Island (see Brunel et al 2021 for a full description). Part of this program consists of conducting interviews with the fishers when they return from a fishing trip. The “logbooks” that are filled, contain information about the fishing operations (type and number of gear, location, duration) and catches per trips for a number of species, including lionfish. Biological sampling is also conducted, both on the landings (at the harbour) and on the catches (onboard) to establish catch species composition and length composition, including the lionfish when present.

The logbook surveys and biological sampling are conducted according to an opportunistic strategy—rather than a pre-established sampling schedule—and they are greatly dependent on the fishers availability and willingness to collaborate. As a result, the coverage of both sampling activities can vary greatly between boats and months (on average, a total of 60 trips per year are covered by the biological sampling

activity, and logbooks cover 410 trips per year). Since 2015, lionfish have had commercial value in Saba and, notwithstanding their small contribution to the bycatch of the lobster and snapper fisheries, they are landed and sold locally for consumption as an environmental specialty. Before 2015, nearly all lionfish caught in any type of trap were only killed and discarded.

Abundance trends

The annual mean of the catches of lionfish per fishing trip was calculated from the logbooks data for the two main gears (lobster traps and redfish traps) to investigate the existence of temporal changes in lionfish abundance. A non-parametric Mann–Kendall test was then applied to the annual means to test for the existence of monotonous temporal trends.

Length-frequency analysis

Length measurement data on lionfish were less numerous than the logbook data, and there were several years for which too few measurements were available to describe the length-frequency distribution of the catches (no lionfish measured between 2013 and 2015, and less than 15 in 2016 and 2020). The analysis of the length-frequency data therefore only included the years with higher numbers of lionfish measured (between 29 and 71 fish measured annually for the years 2012, 2017, 2018, 2019 and 2021). Lionfish length was modelled as function of the year, used as categorical variable and using a GLM with a Gamma error distribution. A Turkey's "Honest Significant Difference" test was then applied to conduct pairwise comparisons of the differences in lionfish length between pairs of years.

Fisheries-independent depth trends in population density and size-frequency distribution

Population size-frequency and density comparisons for different depths using fisheries-dependent catch data is complicated for the Saba Bank based on the fact that lobster traps and snapper traps differ greatly in shape and selectivity and are deployed at greatly different depths, with little overlap. Therefore, in addition to the data obtained from port sampling of lionfish landings we studied population density and

size-distribution in relation to depth on the bank based on directed fisheries-independent experimental lionfish trapping, conducted between June and November 2018. Trapping was done using traditional arrowhead fish traps and modified arrowhead traps with "escape" funnels (in an attempt to reduce by catch of other fish species), here termed "modified arrowhead traps" (Supplement 1). Both traps used had a grid size of 2.5×2.5 cm. A total of 183 trap lifts were done from depths varying between 19 and 142 m, using a soaking time of 7 days. There were no significant differences in catch rate or size-structure between the arrowhead and modified arrowhead trap types, and therefore the data from both types of traps was pooled for analysis.

Skin ulcer incidence

Up to 2020, no notice was made of any skin lesions on any of the (217) Saba Bank lionfish measured but in 2021, a focussed examination was conducted. This yielded a sample of 47 fish. We compared the incidence of skin disease of our sample to the values established for the Gulf of Mexico using a standard test for the difference between two proportions for large sample sizes from binomial populations whereby a normal distribution can be assumed (Walpole and Meyers 1978). As the sample sizes for comparison with our limited data were very large, we tested for the difference in proportions assuming a tenfold smaller reference sample size than Harris et al. (2020) had actually obtained (August 2017, $n=988$; December 2017, $n=1228$).

Results

Lionfish population trends

For the period covered by the logbook data, the annual mean catch of lionfish per trip showed a short increasing phase followed by a decrease for both gears (Fig. 2). Mean catch per trip increased from 2012 to 2014 in the deep-water redfish traps and to 2015 in the shallow-water lobster traps (although the trend was not significant, Mann–Kendall test, $p=0.30$ for 2012–2014 and $p=0.09$ for 2012–2015 for redfish and lobster traps respectively). After this increase, the mean annual catch

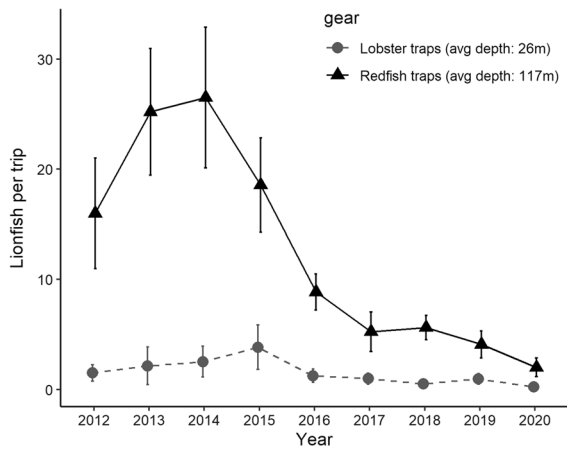


Fig. 2 Trends in the abundance (annual mean catch per trip) of lionfish in the deep-water redfish traps and shallow-water lobster traps on the Saba Bank. Error bars indicate 95%

per trip declined abruptly (Man–Kendal test, $p < 0.001$ and $p = 0.02$) to reach low levels in the most recent years, especially in the deep-water redfish traps. Catches of lionfish per trip in the redfish traps were 8.4 time higher (average of the annual ratios in mean catches per trip) than in the lobster traps.

Lionfish length structure and depth distribution

The Gamma GLM indicated that there were significant differences in lionfish length between the years ($p < 0.001$) and the Turkey’s HSD test done on the model coefficients showed that the year 2012 (27.4 cm on average) was different from the subsequent years (annual mean between 31.3 and 33.5 cm for the years 2017, 2018, 2019 and 2021, Fig. 3). This indicates that at the beginning of the invasion lionfish were smaller than at present, and after the significant population decline which started in 2014.

Fishing experiments done in 2018 with the arrow-head traps along the whole depth range in which the fisheries operate showed that the length of the lionfish caught was independent from the depth at which the traps were set (Fig. 4). Lionfish density, however, was found to vary with depth, as indicated by the proportion of trap catches containing one or more lionfish (Fig. 5). Lionfish were significantly more likely to be caught in traps set at intermediate depths between 50

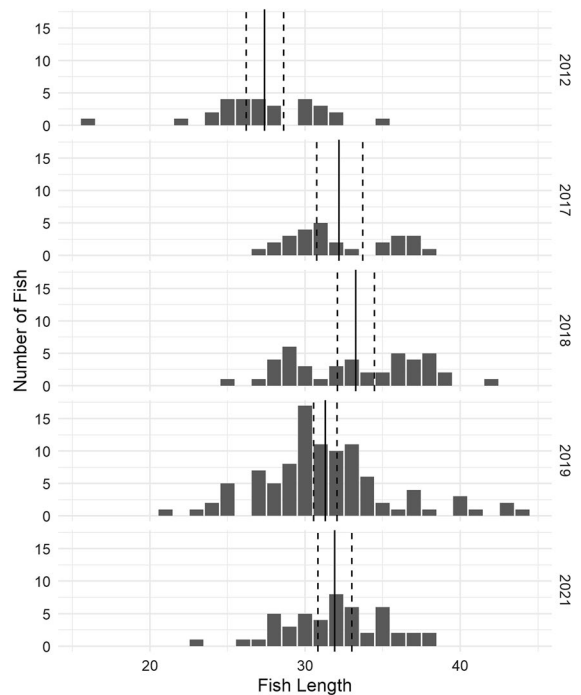


Fig. 3 Lionfish size-frequency structures for fish caught in the trap fisheries on the Saba Bank for the year 2012, 2017, 2018, 2019 and 2021. Vertical bars indicate the annual mean length (and 95% confidence intervals)

and 100 m than at either deeper or shallower depths ($\chi^2 = 18.54$, $df = 3$, $p < 0.001$), indicative of higher lionfish population densities at those intermediate depths.

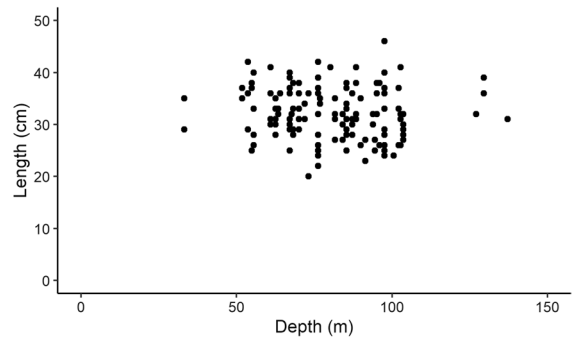


Fig. 4 Lionfish size (total length in cm) versus depth (m) as caught in fisheries-independent trap sampling on the Saba Bank in 2018

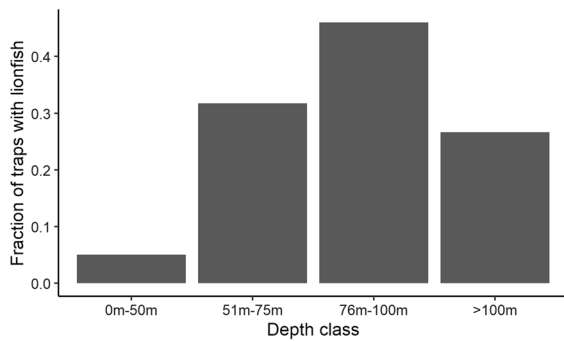


Fig. 5 Proportion of traps catching one or more lionfish for four different depth intervals using either traditional arrowhead traps or (slightly) modified arrowhead traps

Skin ulcer incidence 2021

The disease prevalence we recorded in 2012 amounted to 0%. Even based on our modest sample size of 47 fishes for the Saba Bank and applying parsimonious assumptions as previously explained, we can conclude that in 2021 the incidence of disease on the Saba Bank was significantly less than the incidence recorded for the Gulf of Mexico in August 2017 (40%) ($z=5.07$, critical region $_{\alpha=0.001}$: $z>3.10$). The incidence on the Saba Bank in 2021 was also significantly less than the much lower incidence recorded for the Gulf of Mexico in December 2017 (14%) ($z=2.69$, critical region $_{\alpha=0.01}$: $z>2.33$), applying the same parsimonious assumptions.

Discussion

Notwithstanding the many studies that are available on the Western-Atlantic lionfish invasion, little still is known about the dynamics of the lionfish and the factors governing its populations in the Caribbean (Benkwitt 2013; McCard et al. 2021). In the meantime the species appears to have reached the final stage of its invasion process, in which it has become firmly established and numerous in a wide variety of habitats and able to reproduce and disperse across a wide geographic range (Harris et al. 2018).

In this study we document a large and rapid population drop for the lionfish following its initial increase in abundance on the Saba Bank in the Eastern Caribbean, after first arriving in 2009 or 2010.

Our data, indicate also a gradual increase in mean size of lionfish caught, since they were first recorded on the bank in 2010 and up through 2021. As the data further come from two fisheries operating at different depth ranges but which show no inversely complementary density patterns through time (i.e., a decrease in the shallow depth range in combination with an increase at greater depths), it all but precludes that the population declines observed could be explained by any large scale or ontogenetic vertical migration of the fish. In corroboration of this, our fisheries-independent 2018 studies into lionfish trapping efficiency at different depths on the bank, indicated no evidence of size-dependent depth distribution as is commonly observed in many other reef fish species.

Population size-frequency and density comparisons for different depths using fisheries-dependent catch data is complicated for the Saba Bank based on the fact that lobster traps and snapper traps differ greatly and are deployed at greatly different depths, with little overlap. Hence, the large difference in lionfish catch rates documented between the two fisheries may reflect a depth-related habitat preference for the lionfish, but may also simply reflect a difference in catchability between the two types of traps used. This is because, unlike redfish traps which are designed to target fish, lobster traps have a wider mesh size and a broader funnel. To address this complexity we conducted sampling using the typical arrowhead fish traps and slightly modified arrowhead traps across all depths. The results showed that lionfish population densities were relatively low at the comparatively shallow depths of deployment of the lobster traps and had higher population densities between 50 and 100 m of depth on the Saba Bank. Hence, this density difference certainly contributes to the much lower lionfish catch rates of lobster versus snapper traps. Most traps in the redfish fishery are set in the 50–100 m depth range and can partially explain why the redfish trap fishery had much higher catch rates than the lobster trap fishery.

Several other researchers have examined how lionfish density and population size-structure might differ with depth. Some results indicate lionfish densities are often highest at mesophotic (30–150 m) depths (Andradi-Brown et al. 2017), as do our findings. Like Nuttall et al. (2014), we ascribe the observed density differences with depth especially due to differences in habitat availability. On the Saba Bank,

three-dimensional reef structure and hence shelter is limited in the shallower central parts of the bank and most reef cover which lionfish appear to depend on and actively seek, occurs along the outer slopes of the bank (Mckenna and Etnoyer 2010).

As regards potential depth-related size-frequency differences, some studies suggest that lionfish preferentially recruit to shallow areas and then migrate down to deeper reefs (Claydon et al. 2012). However, the studies examining fish in the (larger) size range susceptible to being caught by fish traps conclude that lionfish size structure is not really affected by depth unless shallow-biased culling by divers takes place (Andradi-Brown et al. 2017). Notwithstanding our considerable dataset, in corroboration of the studies cited above, no trend in mean lionfish size with depth could be demonstrated for the Saba Bank where also no culling takes place.

Benkwitt et al. (2017) were the first to suggest that the lionfish invasion might be waning. More recently, Harris et al. (2020) found evidence to suggest that an infectious, undescribed pathogen that causes skin ulceration in lionfish may have caused or at least contributed to a population crash and recruitment failure for this species in the Gulf of Mexico. On the Saba Bank, and based on the data we have, the population crash we document has likely not been accompanied by a similar incidence of the new ulcerative skin disease. Neither past observations during fisheries monitoring up through 2020, nor our directed sampling in 2021, uncovered any instances of skin disease. Hence there is no evidence that disease could play a similar local role on the Saba Bank as has been suggested for the Gulf of Mexico. However, if the skin disease can cause population crashes and reduced reproductive output elsewhere this might result in sharply lower larval densities and transport and ultimately reduce recruitment in other areas. While the cause for the lionfish population decline of the Saba Bank remains unknown, our data indicate in any case that a local outburst of necrotic skin disease is likely not the cause. The fisheries take of lionfish as a minor component of the bycatch from about ten vessels fishing on a 2000 km² bank is unlikely to have been a meaningful contributor to the population decline documented. Boom-bust dynamics are often witnessed in biological invasions and have critical implications for both understanding and managing invasive species (Strayer et al. 2017). While the underlying cause for

the boom-bust event we document remains unknown, it suggests that the Caribbean coral reef ecosystem is starting to develop feedback mechanisms that can level-off deleterious population excesses of this invasive species. Further research is needed to see to what extent other areas in the Western Atlantic have also undergone population changes and what the underlying causes might have been.

Hence, the exact causes for apparent levelling-off of lionfish populations as also seen in different parts of the region remain unknown. Evidence for control by means of predators (e.g. Bejarano et al. 2015) or parasites (e.g. Tuttle et al. 2017) seems weak or largely lacking. For the population levelling seen in the Bahamas, evidence suggest that intraspecific density dependent effects such as local competition for food, cannibalism and/or low genetic diversity may all play a role (Burford Reiskind et al. 2019). The population decline we documented here for the Saba Bank suggests that the need for control efforts will gradually decline as lionfish populations might eventually level-off to a new (and lower) equilibrium density thanks to ecological control mechanisms which are yet poorly understood.

Acknowledgements This research and the data collection upon which it is based was financed by the Netherlands Ministry of Agriculture Nature and Fisheries as part of their “BO” policy support research program with Wageningen University and Research under the project BO-43-021-04-001 and project number 4318100177. We are especially grateful to Hayo Haanstra, Gelare Nader, Paul Hoetjes, and Yoeri de Vries for their support throughout the years of data collection that made this study possible. Special thanks are due to Kai Wulf, the Saba Conservation Foundation crew and volunteers, and the Saba Bank Management Unit that generously provided facilities and logistical assistance in all aspects of the fieldwork. We thank the many college and university students and interns who contributed to the necessary port sampling data collection. Special thanks are also due our intern Diane de Jong of the HAS University of Applied Sciences of ‘s-Hertogenbosch for collecting the fisheries-independent trapping data were here included in our assessment and Jan Tjalling van der Wal for drafting Fig 1. A final word of gratitude is due to two anonymous reviewers for suggesting many important improvements to the manuscript.

Data availability The datasets generated during and/or analysed during the current study are available from the corresponding author on reasonable request.

Declarations

Conflict of interest The authors have no relevant financial or non-financial interests to disclose.

Open Access This article is licensed under a Creative Commons Attribution 4.0 International License, which permits use, sharing, adaptation, distribution and reproduction in any medium or format, as long as you give appropriate credit to the original author(s) and the source, provide a link to the Creative Commons licence, and indicate if changes were made. The images or other third party material in this article are included in the article's Creative Commons licence, unless indicated otherwise in a credit line to the material. If material is not included in the article's Creative Commons licence and your intended use is not permitted by statutory regulation or exceeds the permitted use, you will need to obtain permission directly from the copyright holder. To view a copy of this licence, visit <http://creativecommons.org/licenses/by/4.0/>.

References

- Andradi-Brown DA, Vermeij MJA, Slattery M et al (2017) Large-scale invasion of western Atlantic mesophotic reefs by lionfish potentially undermines culling based management. *Biol Invasions* 19:939–954. <https://doi.org/10.1007/s10530-016-1358-0>
- Bejarano S, Lohr K, Hamilton S, Manfrino C (2015) Relationships of invasive lionfish with topographic complexity, groupers, and native prey fishes in Little Cayman. *Mar Biol* 162:253–266
- Benkwitt CE (2013) Density-dependent growth in invasive lionfish (*Pterois volitans*). *PLoS ONE* 8(6):e66995. <https://doi.org/10.1371/journal.pone.0066995>
- Benkwitt CE, Albins MA, Buch KL, Ingeman KE, Kindinger TL, Pusack TJ, Stallings CD, Hixon MA (2017) Is the lionfish invasion waning? Evidence from the Bahamas. *Coral Reefs* 36(4):1255–1261
- Boudouresque CF, Verlaque M (2012) An overview of species introduction and invasion processes in marine and coastal lagoon habitats. *CBM Cah Biol Mar* 53(3):309
- Brunel T, Kuramae A, Debrot AO (2021) Status and trends in Saba Bank fisheries: analysis of fisheries data collected over the period 2011–2020 (No. C062/21). Wageningen Marine Research
- Burford Reiskind MO, Reed EMX, Elias A, Giacomini JJ, McNear AF, Nieuwsma J, Parker GA, Roberts RB, Rossi RE, Stephenson CN, Stevens JL, Williams BE (2019) The genomics of invasion: characterization of red lionfish (*Pterois volitans*) populations from the native and introduced ranges. *Biol Invasions*. <https://doi.org/10.1007/s10530-019-01992-0>
- Claydon J, Calosso MC, Traiger SB (2012) Progression of invasive lionfish in seagrass, mangrove and reef habitats. *Mar Ecol Prog Ser* 448:119–129
- Côté IM, Smith NS (2018) The lionfish *Pterois* sp. Invasion: has the worst-case scenario come to pass? *J Fish Biol* 92:660–689. <https://doi.org/10.1111/jfb.13544>
- Debrot AO, van Buurt G Vermeij MAJ (2011) Preliminary overview of exotic and invasive marine species in the Dutch Caribbean. IMARES Report C188/11. p 29
- Debrot AO, Tamis JE, de Haan D, Scheidat M van der Wal JT (2017) Priorities in management implementation for marine mammal conservation in the Saba sector of the Ybari sanctuary. Wageningen Marine Research (University & Research Centre) Report C097/17. p 103
- de Graaf M, Brunel T, Nagelkerke L, Debrot AO (2017) Status and trends Saba Bank fisheries: 2015. WMR-rapport C077/17. p 127
- Harris HE, Fogg AQ, Allen MS, Ahrens RN, Patterson WF III (2020) Precipitous declines in northern Gulf of Mexico invasive lionfish populations following the emergence of an ulcerative skin disease. *Sci Rept* 10(1):1–17
- Harris HE, Fogg AQ, Yanong RP, Frasca Jr S, Cody T, Waltzek TB, Patterson WF (2018) First report of an emerging ulcerative skin disease in invasive Lionfish: FA209/FA209, 9/2018. EDIS, 2018(5)
- Lankau RA, Nuzzo V, Spyreas G, Davis AS (2009) Evolutionary limits ameliorate the negative impact of an invasive plant. *Proc Natl Acad Sci* 106(36):15362–15367
- Larson ER, Kreps TA, Peters B, Peters JA, Lodge DM (2019) Habitat explains patterns of population decline for an invasive crayfish. *Ecology* 100(5):e02659
- LeBrun EG, Jones M, Plowes RM, Gilbert LE (2022) Pathogen-mediated natural and manipulated population collapse in an invasive social insect. *Proc Natl Acad Sci* 119(14):e2114558119
- Luiz OJ, dos Santos WCR, Marceniuk AP, Rocha LA, Floeter SR, Buck CE et al (2021) Multiple lionfish (*Pterois* spp.) new occurrences along the Brazilian coast confirm the invasion pathway into the Southwestern Atlantic. *Biol Invasions* 23:3013–3019
- McCard M, South J, Cuthbert RN, Dickey JW, McCard N, Dick JT (2021) Pushing the switch: functional responses and prey switching by invasive lionfish may mediate their ecological impact. *Biol Invasions* 23(6):2019–2032
- McKenna SA, Etnoyer P (2010) Rapid assessment of stony coral richness and condition on Saba Bank Netherlands Antilles. *PLoS ONE* 5(5):e10749
- Moore JW, Herbst DB, Heady WN, Carlson SM (2012) Stream community and ecosystem responses to the boom and bust of an invading snail. *Biol Invasions* 14:2435–2446
- Nuttall MF, Johnston MA, Eckert RJ, Embesi JA, Hickerson EL, Schmahl GP (2014) Lionfish (*Pterois volitans* [Linnaeus, 1758] and *P. miles* [Bennett, 1828]) records within mesophotic depth ranges on natural banks in the Northwestern Gulf of Mexico. *Biol Invasions Rec* 3(2):111–115
- Strayer DL, D'Antonio CM, Essl F, Fowler MS, Geist J, Hilt S, Jeschke JM (2017) Boom-bust dynamics in biological invasions: towards an improved application of the concept. *Ecol Lett* 20(10):1337–1350
- Toller W, Lundvall S (2008) Assessment of the commercial fishery of Saba Bank. Report for the Department of Environment of the Netherlands Antilles, p 56
- Toller W, Debrot AO, Vermeij MJA, Hoetjes PC (2010) Reef fishes of Saba Bank, Netherlands Antilles: assemblage structure across a gradient of habitat types. *PLoS ONE* 5(5):e9202
- Tornabene L, Baldwin CC (2017) A new mesophotic goby, *Palatogobius incendius* (Teleostei: Gobiidae), and the first record of invasive lionfish preying on undescribed biodiversity. *PLoS ONE* 12(5):e0177179
- Tuttle LJ, Sikkil PC, Cure K, Hixon MA (2017) Parasite-mediated enemy release and low biotic resistance may facilitate

invasion of Atlantic coral reefs by Pacific red lionfish (*Pterois volitans*). *Biol Invasions* 19:563–575

Walpole RE, Myers RH (1978) *Probability and statistics for scientists and engineers*, 2nd edn. MacMillan Publ Co, New York, p 580

Williams JT, Carpenter KE, Van Tassell JL, Hoetjes P, Toller W, Etnoyer P, Smith M (2010) Biodiversity assessment of the fishes of Saba Bank atoll Netherlands Antilles. *PLoS ONE* 5(5):e10676

Publisher's Note Springer Nature remains neutral with regard to jurisdictional claims in published maps and institutional affiliations.