

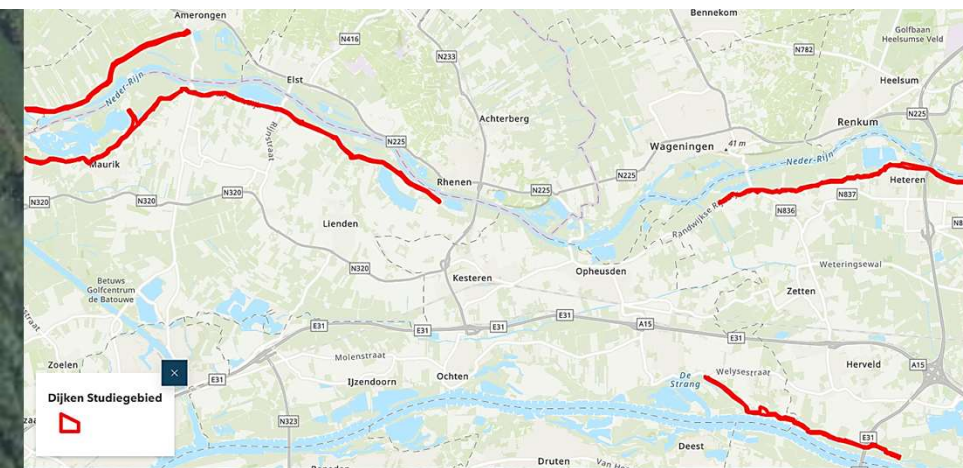


Determining Flower richness of dikes using Remote Sensing & AI-techniques

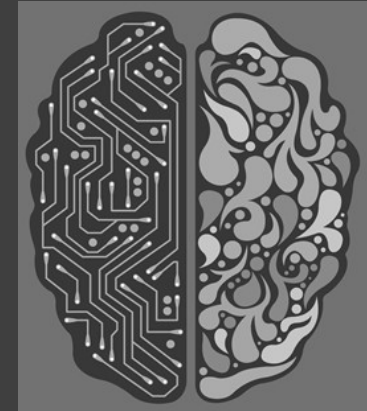
Sabine van Rooij, Wouter Meijninger, Michiel van Eupen, Stan
Los, Uldanay Bairam
(KB-36-004-012)



Flowery dikes ensure high biodiversity, act as connecting zones between habitats, and are more resilient to erosion



Betuwe, along the Neder-Rijn between Amerongen - Wijk bij Duurstede (Rijndijk-Lekdijk), between Maurik and Kersteren (Rijnbanddijk), near Heteren and along the Waal near Andelst (Waalbanddijk-Waaldijk).



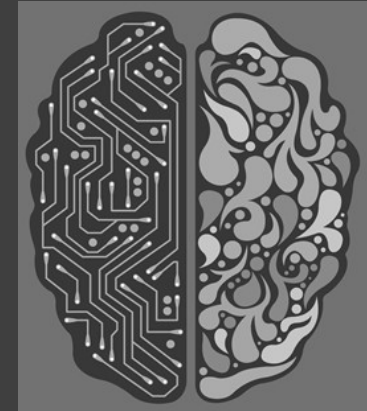
Flower-rich dike samples

(10m x 10m, 400)



Aerial photo 2021 (8cm, May 31 and June 1)

SuperView satellite imagery (50cm, May 28 and June 1)



Flowerpoor dike samples

(10m x 10m, 400)



Aerial photo 2021 (May 31 and June 1)

SuperView satellite imagery (50cm, May 28 and June 1)

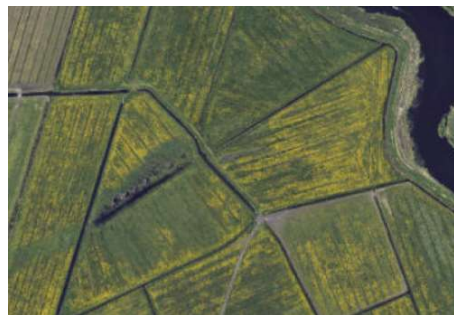
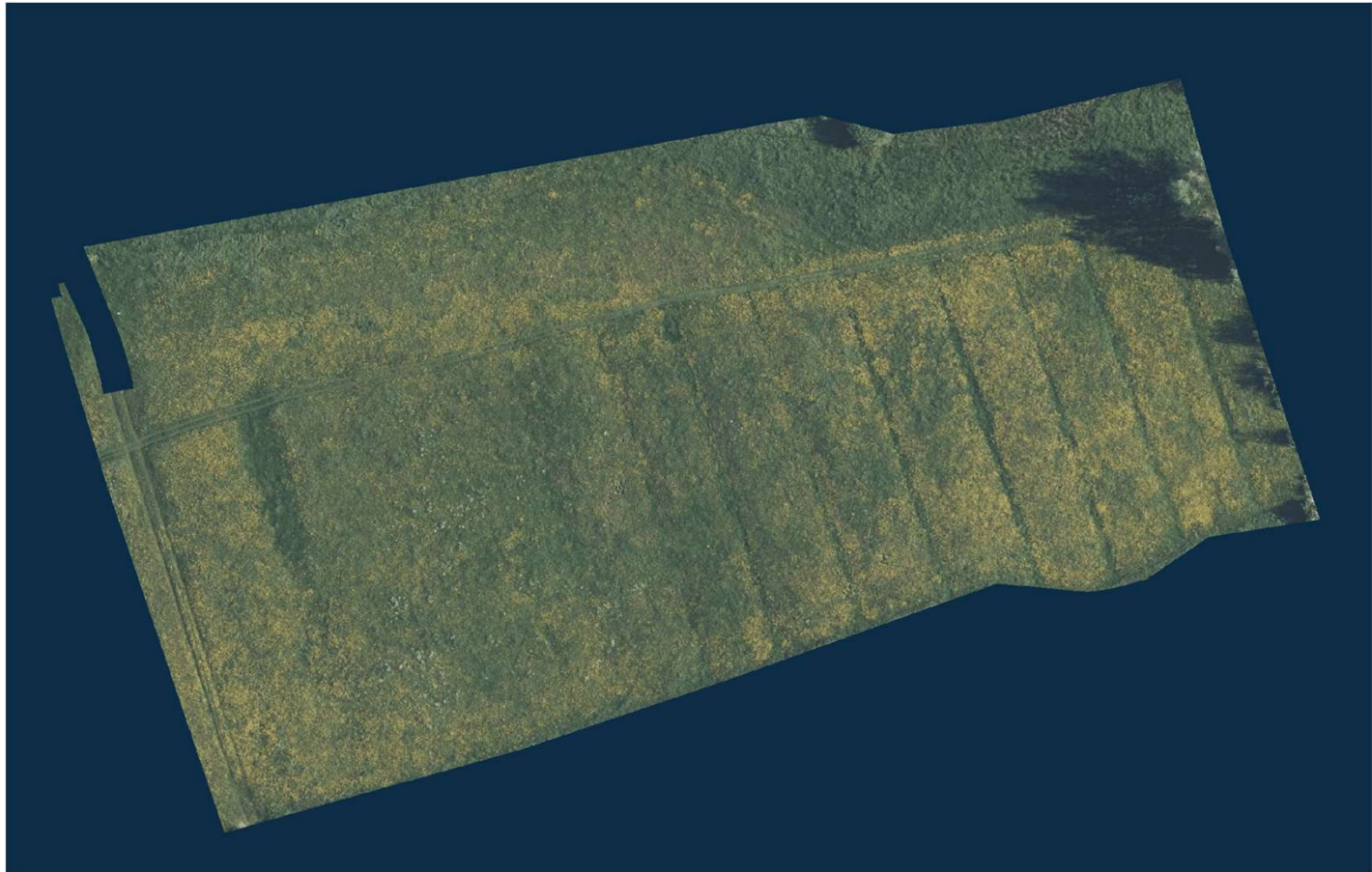
Results

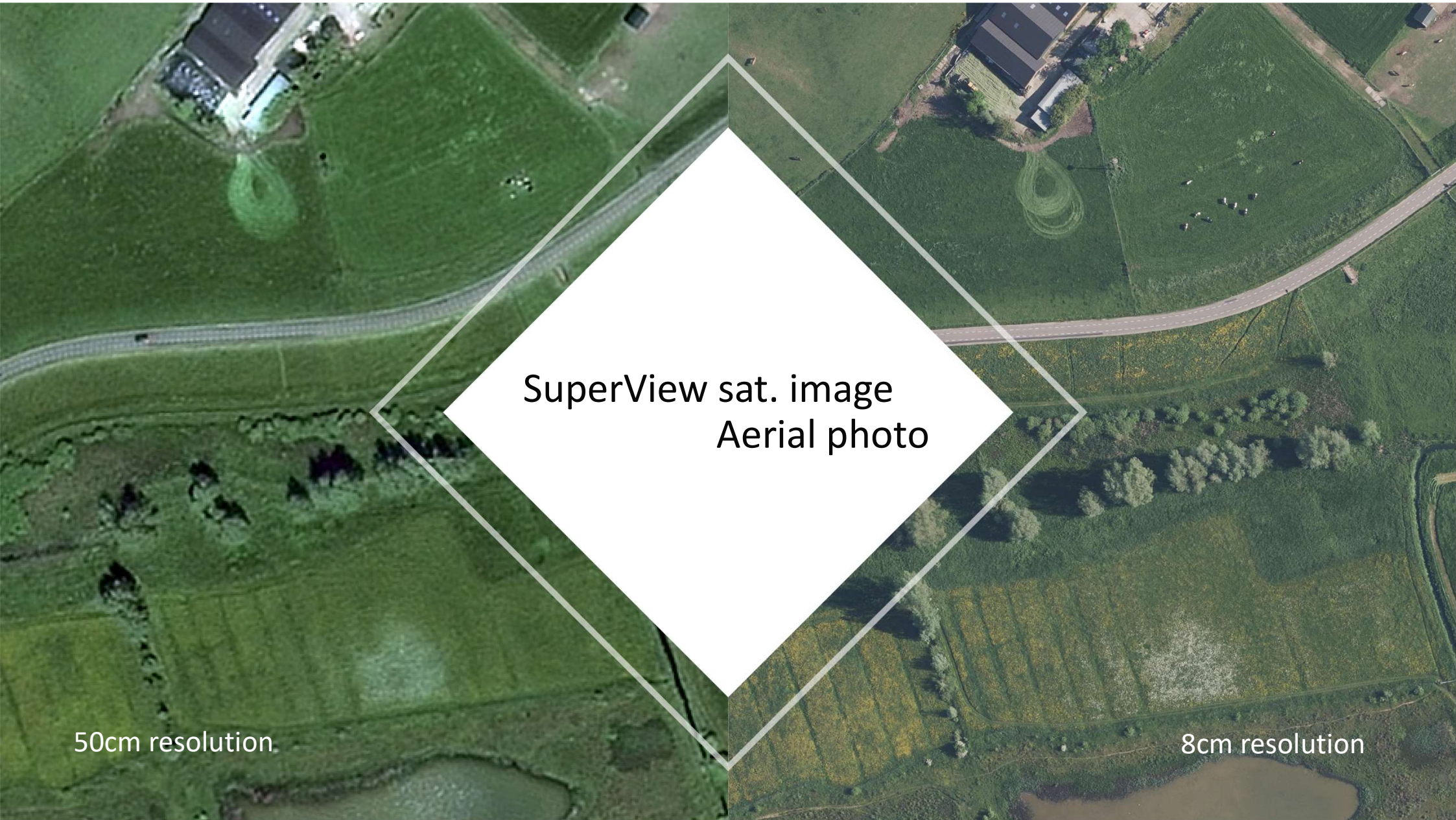
Dikes

- Aerial photo 99%
- Superview 83%

Grasland parcels

- Aerial photo 99%





SuperView sat. image
Aerial photo

50cm resolution

8cm resolution