

Registration of datasets in Pure

Workflow Wageningen University & Research - Library

Hilda van der Pol, 2022 June 28th



Why data registration?

- Ownership: where is our data?
- Monitoring data policy
- Evaluations and assessments



What to register?

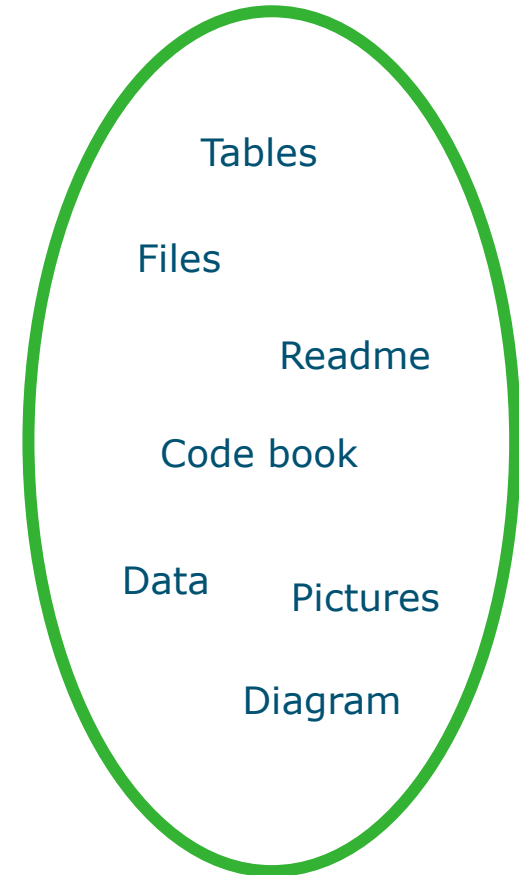
Data

- Research data
- No supplementary information

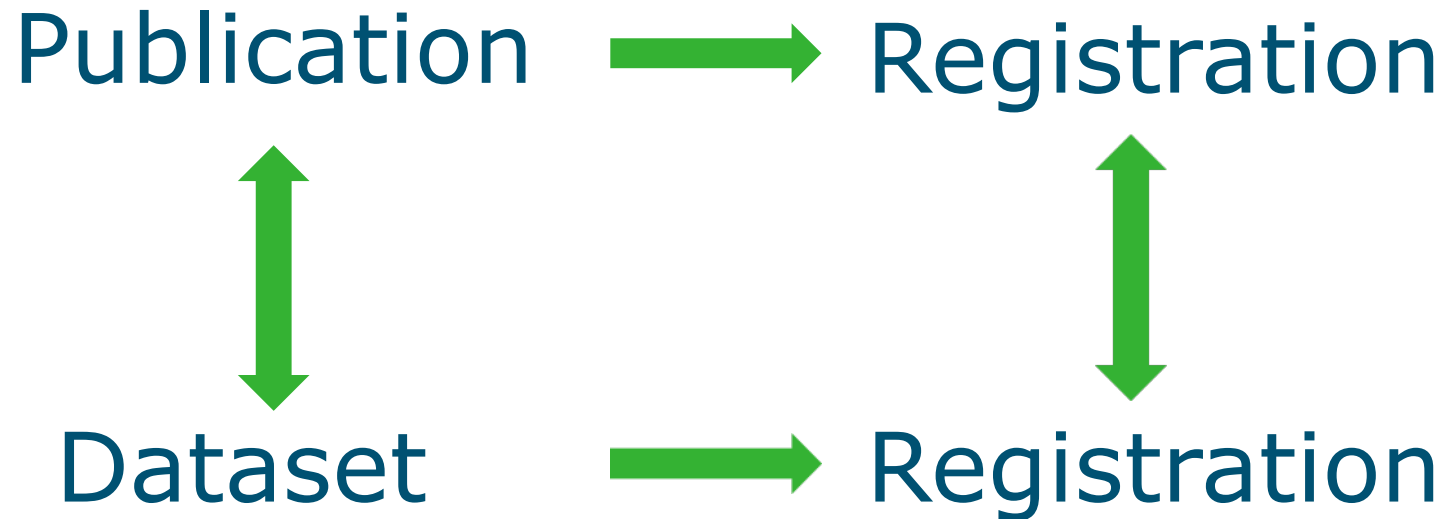
Set

- Package
- DOI, link or identifier

No quality check



Dream of the (data) librarian



Challenges

- Multiple datasets
- Multiple publications
- No publication
- Versions
- Collections
- Missing metadata
- Datasets that are not datasets
- Datasets without WUR authors
- Time span between publication and dataset



How to find datasets?

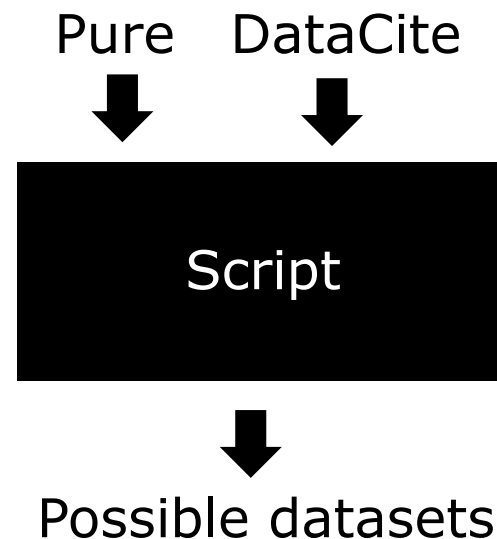
- Deposited by data librarian
- Reported by researcher
- Data availability statement
- Search engine
- Search in repository
- DataCite
- Elsevier Data Monitor?



Workflow at WUR Library

Find possible datasets

- Get metadata from DataCite (2019-present)
- Find article DOI's in metadata and match with Pure
- Find WUR affiliation in metadata
- Match to article based on title
- Clean up versions
- Clean up collections
- Filter out what's already in Pure
- Filter out earlier lists



Workflow at WUR Library

Imported in Pure:

- Dataset with publication
- Multiple datasets for one publication

Checked manually:

- Dataset with multiple publications
- Dataset without publication

Possible datasets

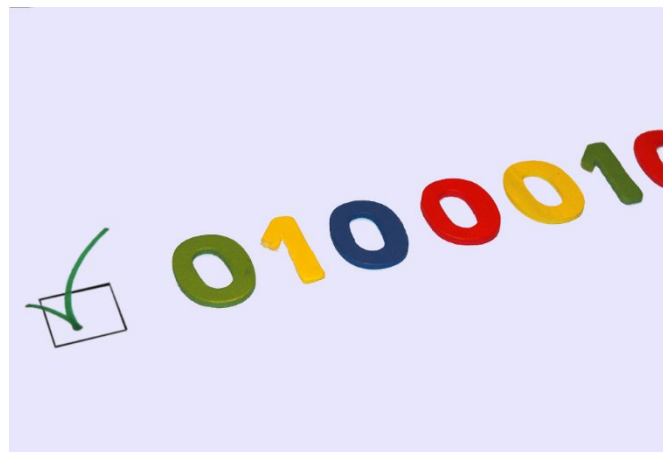


Pure

Workflow at WUR Library

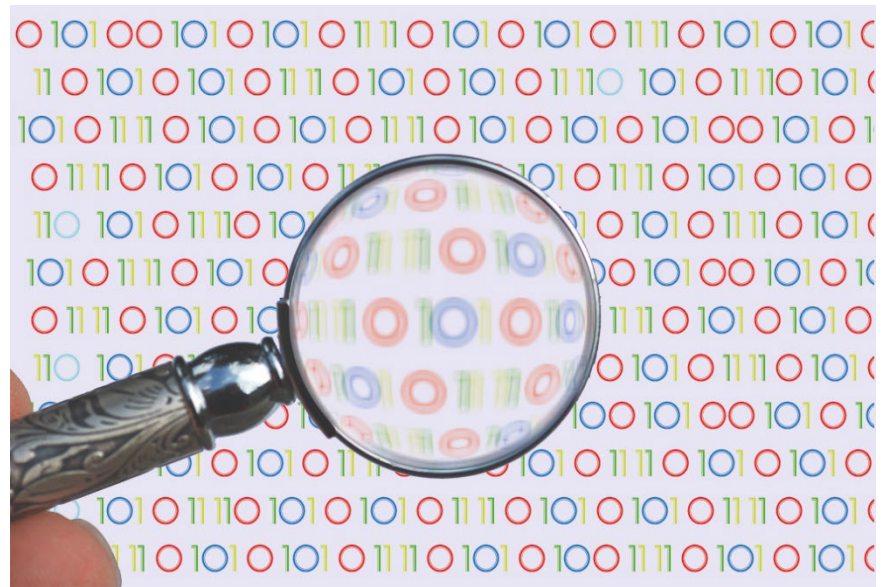
Validation of records

- Check dataset / supplementary information
- Check extra / other datasets
- Check authors and affiliations
- Correct / complement metadata



Genetic datasets

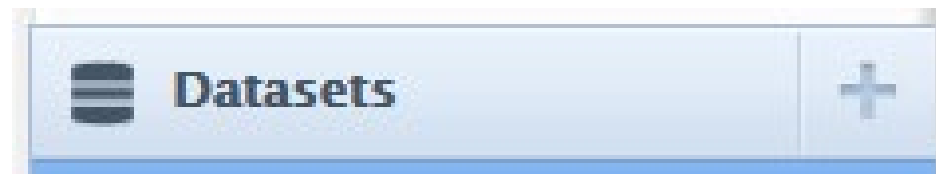
- Gene Expression Omnibus, ENA, Array Express, ...
- Accession number
- Not in DataCite
- Search in repository
- Registered manually
- Text search?
- Import?



Dataset template in Pure

Improvements necessary

- Licence field missing
- Separate fields for publisher and depositing organisation
- Contact person must be one of the creators
- Multiple DOI's not possible
- File formats missing
- Bibliographical field missing



Elsevier Data Monitor

- Import source
- Metadata problems
- Problems with versions and collections
- Pilot after the summer
- Replacement, addition or neither?
- Constant flow
- Costs?

Data Monitor

Import from Data Monitor

Query

Title

Author name(s)

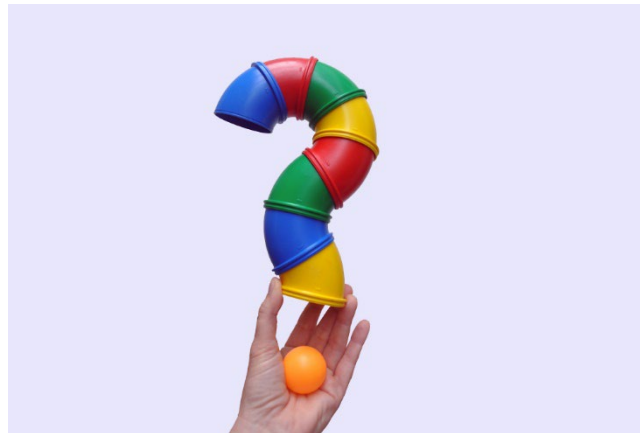
DOI

The future...

- More regular (now twice a year)
- Datasets without DOI
- Unpublished datasets (W-drive, YoDa)
- Data Monitor?
- Other import sources in Pure?
- Software / source code



Questions?



Hilda van der Pol, hilda.vanderpol-sturm@wur.nl