



Deltares



Maximizing public value through sound governance strategies

Lessons from project Marker Wadden

Jeroen Veraart & Stéphanie IJff

4 november 2021

Amsterdam International Water Week



Marker Wadden

Ambitions/naratives

Bird paradise

Ecosystem Lake Marken

Knowledge & Innovation

Regional Development



Lake IJssel

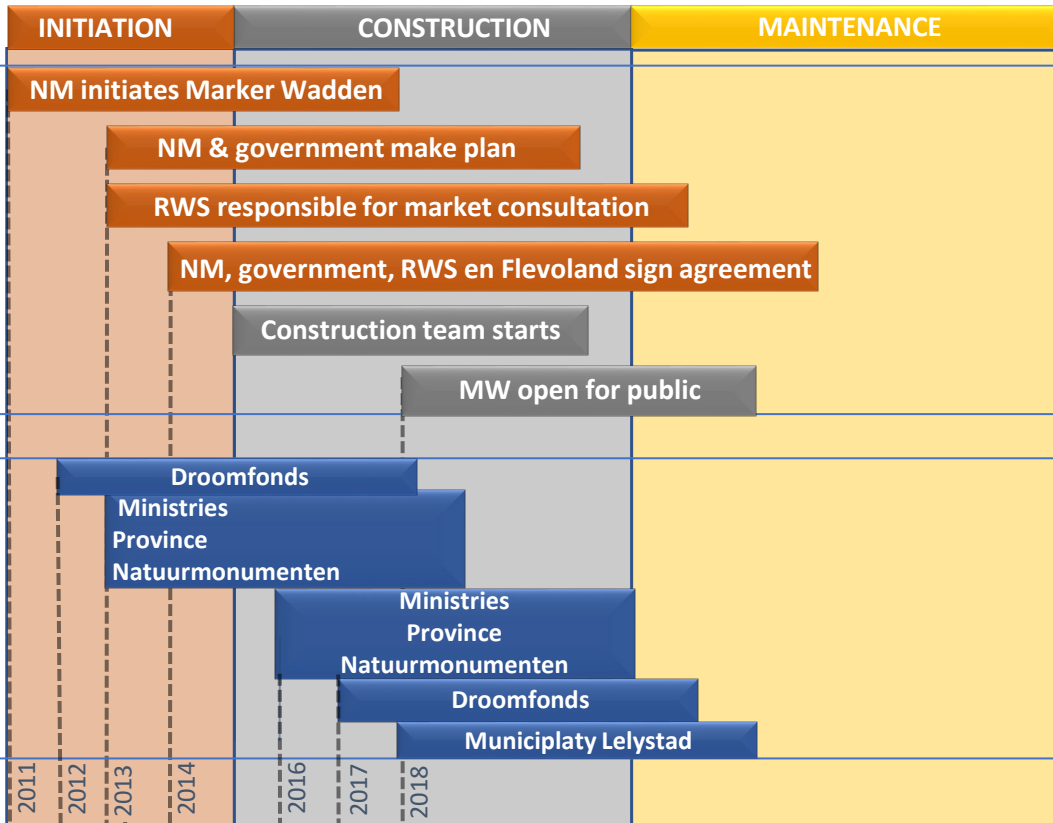
Marker Wadden

Lake Marken

Lelystad

Amsterdam

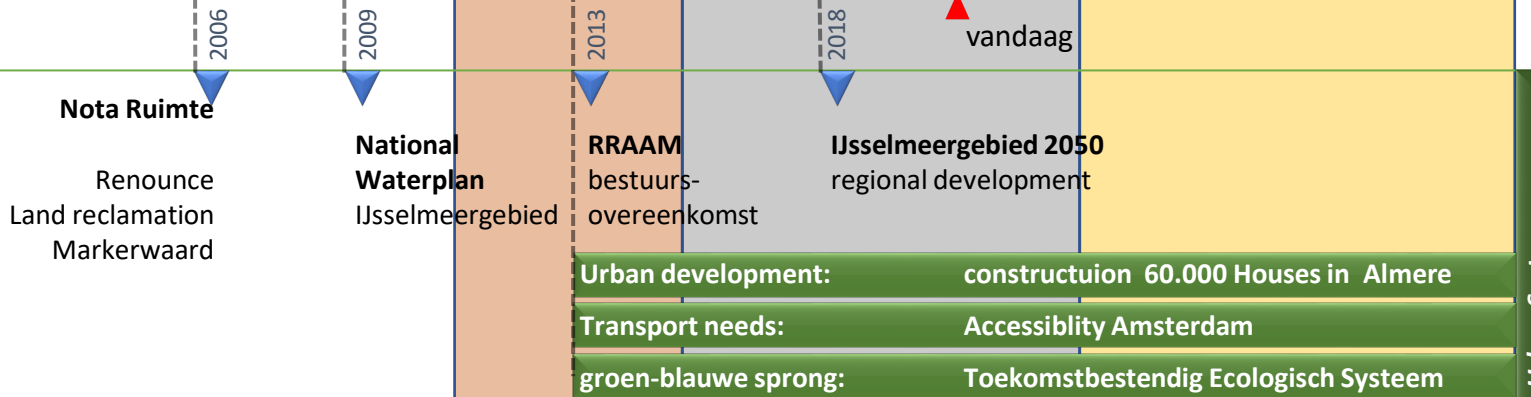
Picture:
Sentinel 2018



innovation

Complexity of research – construction partnership
Learning by doing

Succesful Stepwise financing/procurement
In Dutch: Werk met Werk maken



regional development

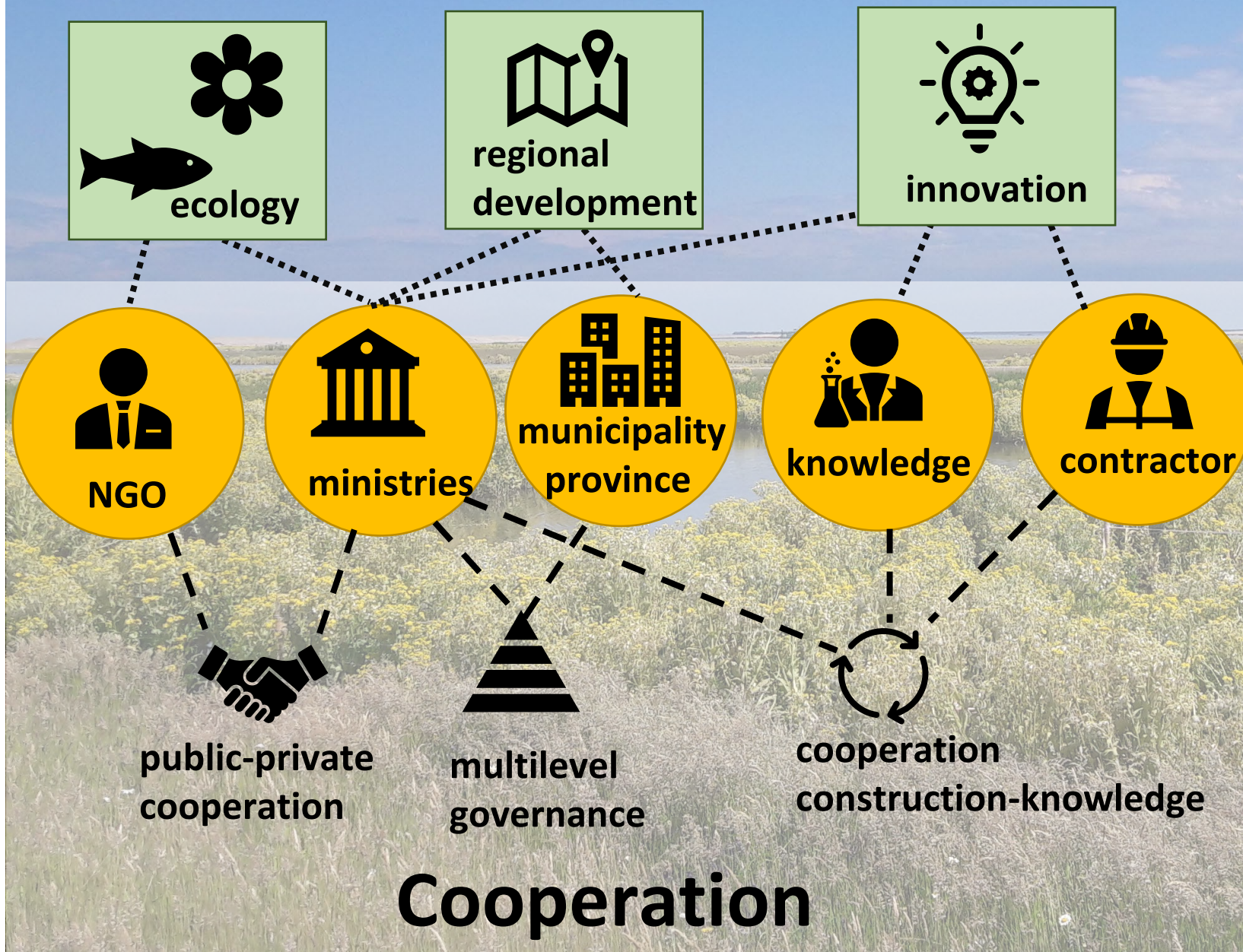
Urban development: constructuion 60.000 Houses in Almere
 Transport needs: Accessibility Amsterdam
 groen-blauwe sprong: Toekomstbestendig Ecologisch Systeem

Urban System

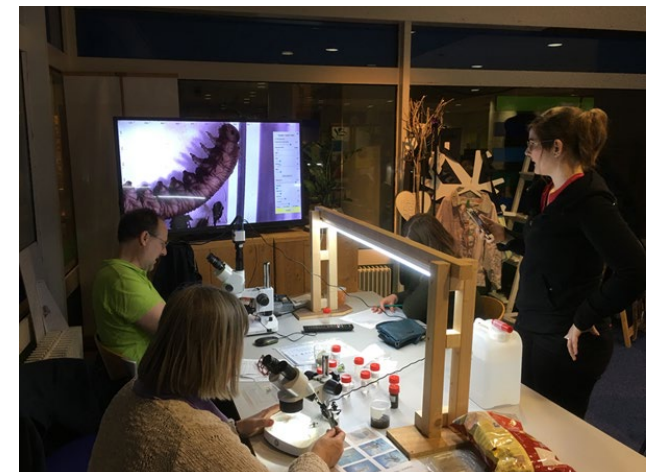


Cooperation

Ambitions



Marker Wadden is not only a living lab for scientists!

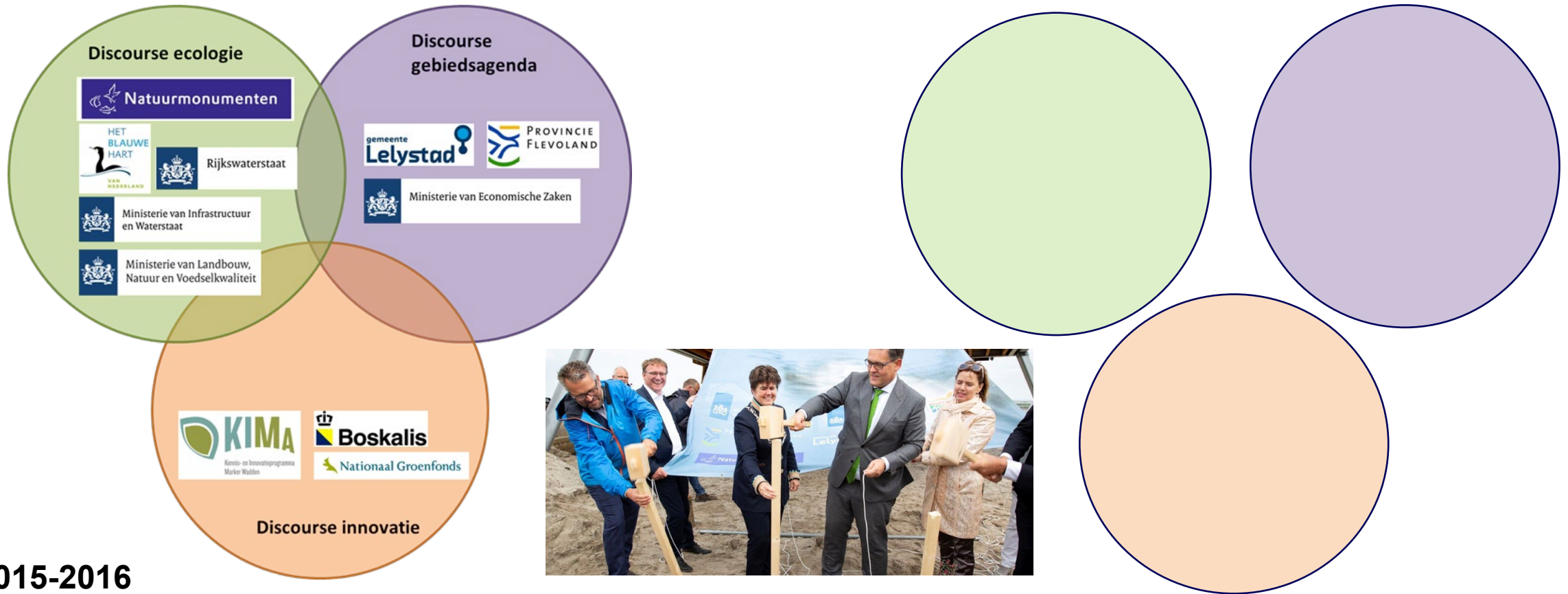


Relations between ambitions and stakeholders in time

Planning phase

Building phase

Completion, FOLLOW UP & Management



Marker Wadden & Innovation

Innovative aspects

- Land reclamation in which ecological ambitions is the primary objective is innovative
- New knowledge about building islands with soft sediment/mud (both successes and pitfalls)
- Nature development in a novel ecosystem

Rising Governance Research Questions in the Netherlands (after 2021)

- Combine the bird paradise Marker Wadden with business opportunities for MKB (recreation)
- Need for public-private partnerships to finance sustainable maintenance of Marker Wadden
- Adaptive Monitoring and evaluation on water system and project level is needed



Marker Wadden & International Knowledge position

- Look what your neighbour is doing with regard to building with nature!
 - *habitat banking as a business model is used elsewhere (US)*
- Assess locations in Europe, such as Marker Wadden*, is a feasible option
 - Comparable in terms of Coalition building / Mutual Gains
 - Comparable in terms of setting, e.g. closed estuaries or ‘ novel ecosystems
- Assess International Funding options for mainstreaming nature based solutions a la MW
 - Green Climate Fund (Europe)
 - Global Environmental Facility (UNEP-GEF)
 - World Bank?



Deltares



Thank you for your attention

Jeroen Veraart & Stéphanie IJff

E: Jeroen.veraart@wur.nl

E: stephanie.ijff@deltares.nl

More information: [KIMA](#) (English)

For further reading:

Willems et al, 2021 [The Public Life Cycle of Marker Wadden](#). (public money and management)

Ijff et al., 2021, [Innovatieve Governance voor building with Nature](#) (Tijdschrift Landschap)

LNW/WUR Research IJsselmeergebied ([BO Research](#))

Many others contributed to this research between (2016-2021):

Mike Duijn, Marijn Stouten, Niels van den Berg, Mariëlle van Riel, Lieke Hüsken, Sanne Grotenberg, Gerald-Jan Ellen, Nienke Nuesink, Shannen Dill, Stefan Claesens, Jannes Willems and many others.



Deltares



GovernEUR
Erasmus



WAGENINGEN
UNIVERSITY & RESEARCH

