

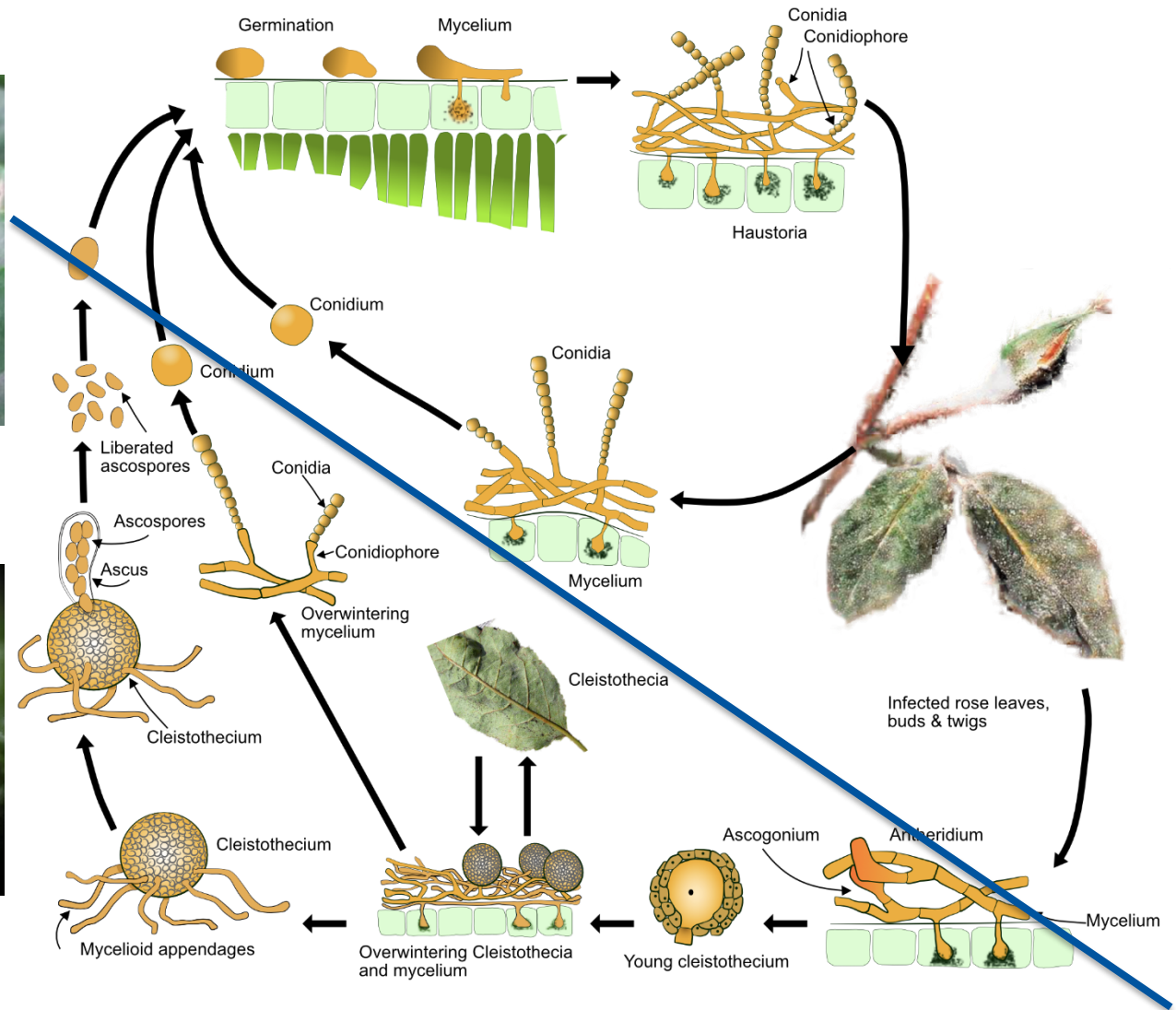
Meeldauwrassen en preventie/beheersing



Kirsten Leiss

Senior Onderzoeker Plant Gezondheid

Meeldauw cyclus



Meeldauw rassen



Roos

**Podosphaera
pannosa**



Paprika

Leveillula taurica



Tomaat

Oidium lycopersici

Oidium neolycopersici

Meeldauw rassen gerbera

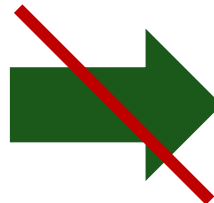
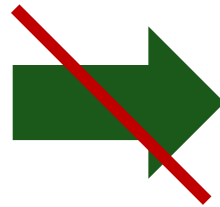


**Oidium citrulli,
Podosphaera fusca/xanthii,
Golovinomyces chiconacearum**

Podosphaera xanthii



Podosphaera xanthii



Verschillende pathovars

Meeldauw rassen gerbera



- ★ Bleiswijk, potgerbera
- ★ Pijnakker, potgerbera
- ★ Naaldwijk, snijgerbera
- ★ Horst, snijgerbera

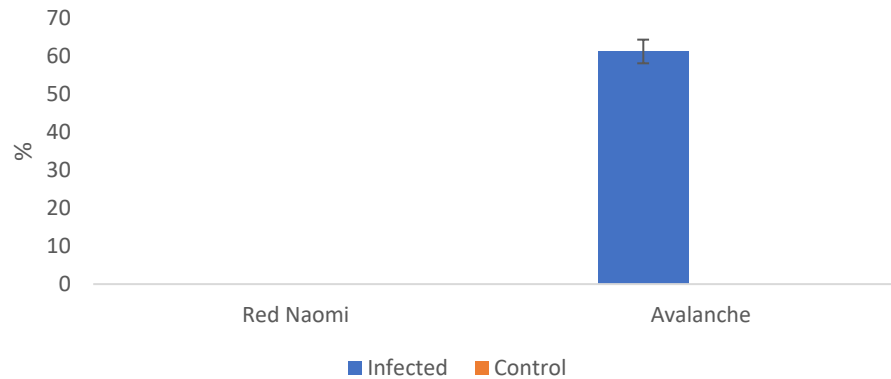
Nodig: NL wijde survey



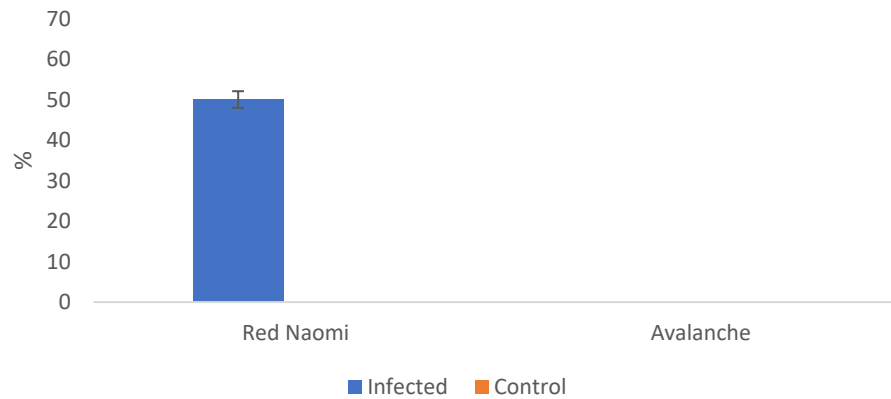
Meeldauw biotypen roos



Mildew Avalanche



Mildew Red Naomi



Meeldauw biotypen roos



Features:

```
Query 1 GACGCTTGTCTGCGCGGCTGACCCCTCCACCCGTGTGAAGTGAATTTGTTGCTTTGGCGG 60
|||||
Sbjct 1 GACGCTTGTCTGCGCGGCTGACCCCTCCACCCGTGTGAAGTGAATTTGTTGCTTTGGCGG 60

Query 61 GCCGGGCTCGACCTACCGGCTCCGGCTGGGGAGTGCCCGCCAGAGAAGCCCCAACTCGTG 120
|||||
Sbjct 61 GCCGGGCTCGACCTACCGGCTCCGGCTGGGGAGTGCCCGCCAGAGAAGCCCCAACTCGTG 120

Query 121 CAGTTAGTGCAGTCTGAGAAAACTTAATAAGTAAACTTTCAACAACGGATCTCTTGGC 180
|||||
Sbjct 121 CAGTTAGTGCAGTCTGAGAAAACTTAATAAGTAAACTTTCAACAACGGATCTCTTGGC 180

Query 181 TCTGGCATCGATGAAGAACGCAGCGAAATGCGATAAGTAATGTGAATTGCAGAATTTAGT 240
|||||
Sbjct 181 TCTGGCATCGATGAAGAACGCAGCGAAATGCGATAAGTAATGTGAATTGCAGAATTTAGT 240

Query 241 GAATCATCGAATCTTTGAACGCACATTGCGCCCCCGGTATCCGAGGGGCATGCCTGTT 300
|||||
Sbjct 241 GAATCATCGAATCTTTGAACGCACATTGCGCCCCCGGTATCCGAGGGGCATGCCTGTT 300

Query 301 CGAGCGTCAGAACATCCTCTCAAGCCTGGCTTGGTCTTGGGGCGCGCCGGCTCGGCGTCC 360
|||||
Sbjct 301 CGAGCGTCAGAACATCCTCTCAAGCCTGGCTTGGTCTTGGGGCGCGCCGGCTCGGCGTCC 360

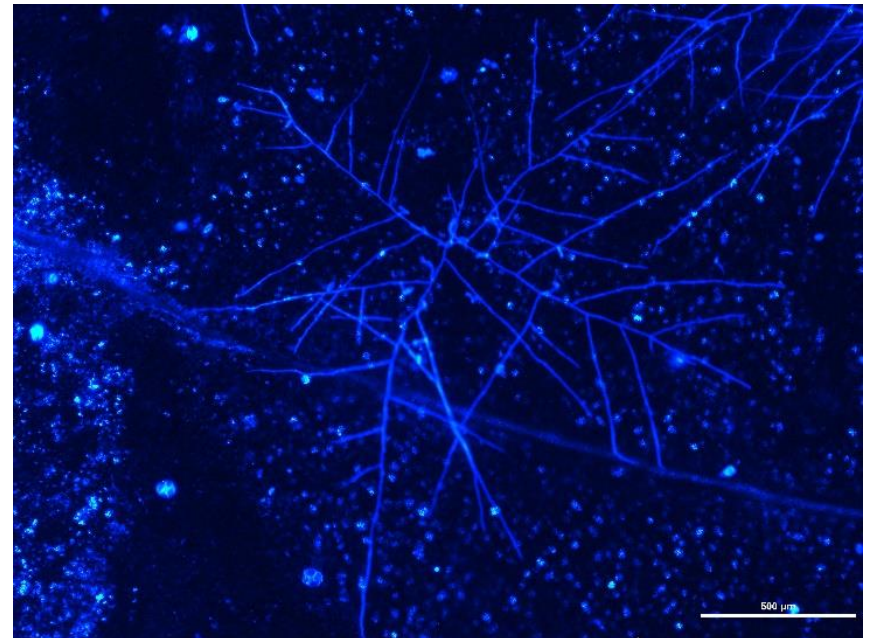
Query 361 CCTAAACAGAGTGGCGGTACCGTTGTGCTCTCCGCGTAGTCACGTATCTCGCGACAGAGT 420
|||||
Sbjct 361 CCTAAACAGAGTGGCGGTACCGTTGTGCTCTCCGCGTAGTCACGTATCTCGCGACAGAGT 420

Query 421 GCGGACGGGACCTGCCAAAACCCACCTAAttttttGGATGACCTCGGATCAGGTAG 476
|||||
Sbjct 421 GCGGACGGGACCTGCCAAAACCCACCTAAttttttGGATGACCTCGGATCAGGTAG 476
```

Dezelfde soort: *Podospaera pannosa*
maar verschillende biotypen

Verschillende biotypen van echte
meeldauw infecteren verschillende
rozenrassen

Vroege detectie/preventie



Monitoren Kas en Microklimaat



Set sensoren om te meten:

Temperatuur en RV

Boven het gewas

Binnen het gewas

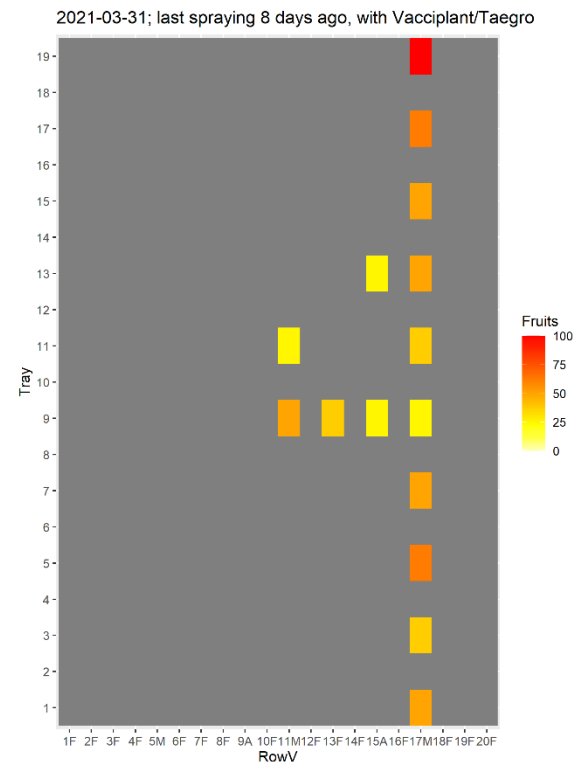
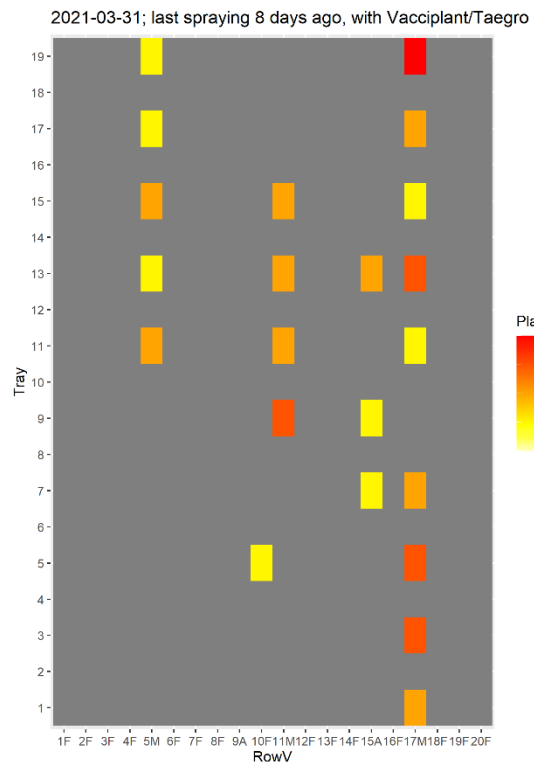
Op de grenslaag van vruchten en bladeren



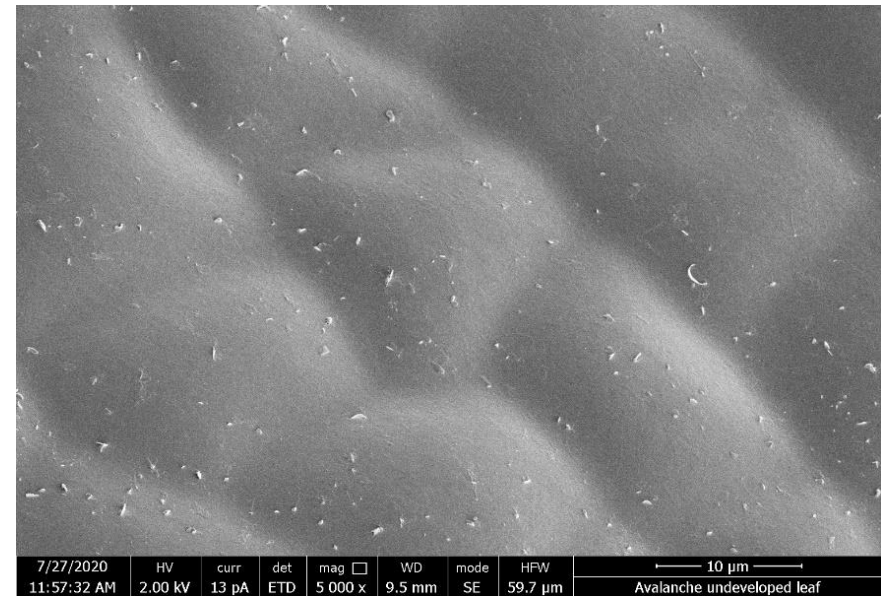
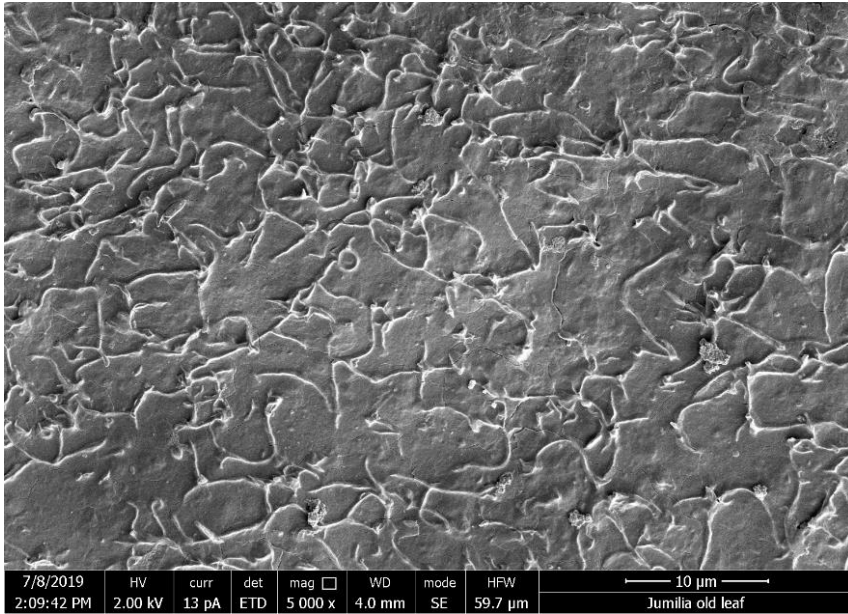
Monitoren meeldauw



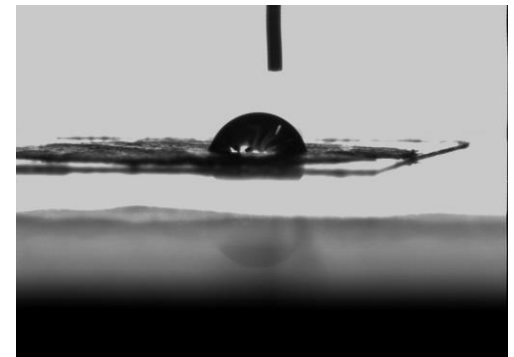
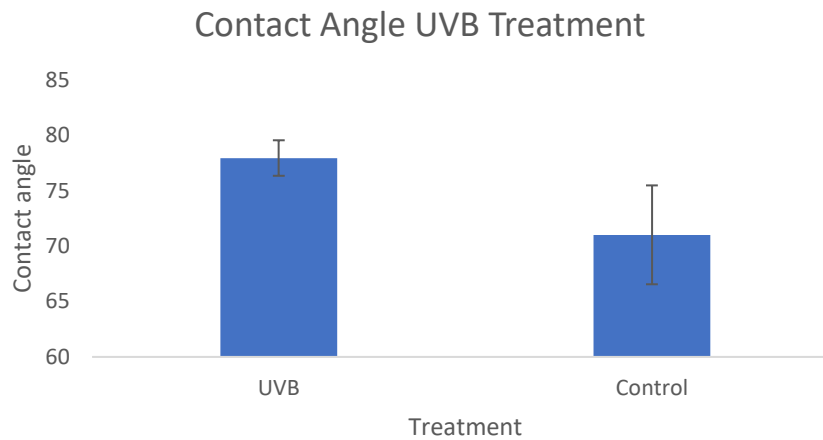
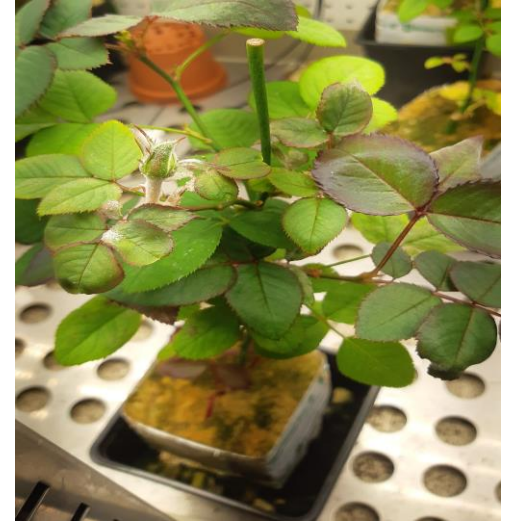
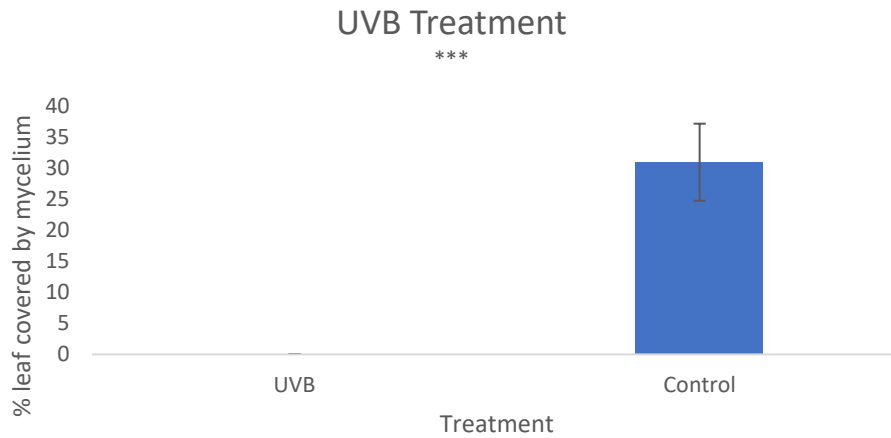
Meeldauwinfectie op elke locatie van de kas wordt regelmatig gemonitord.



Was



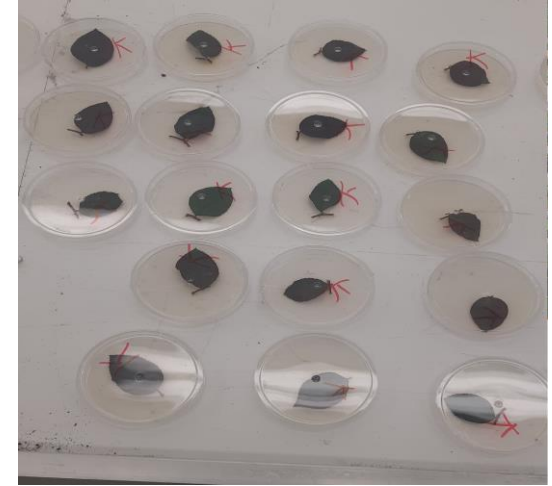
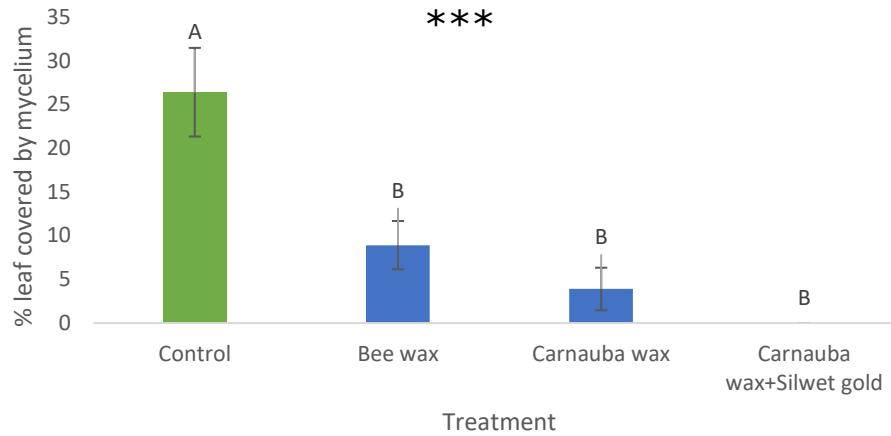
Was UV-B



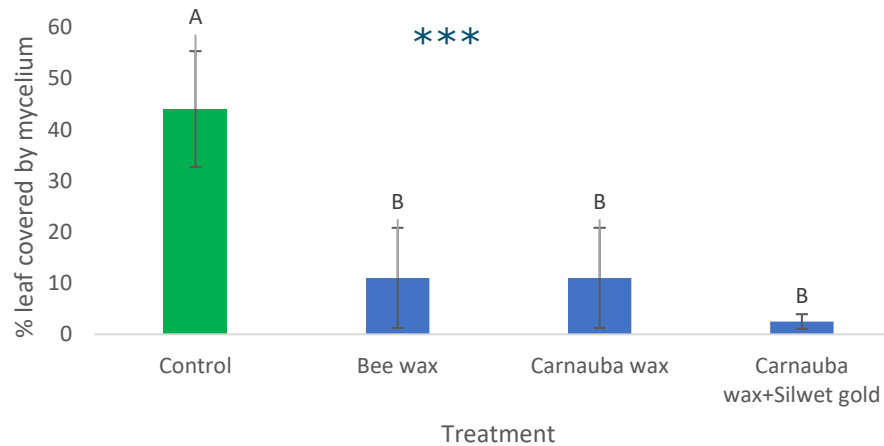
Was applicatie



Wax treatments Bioassays



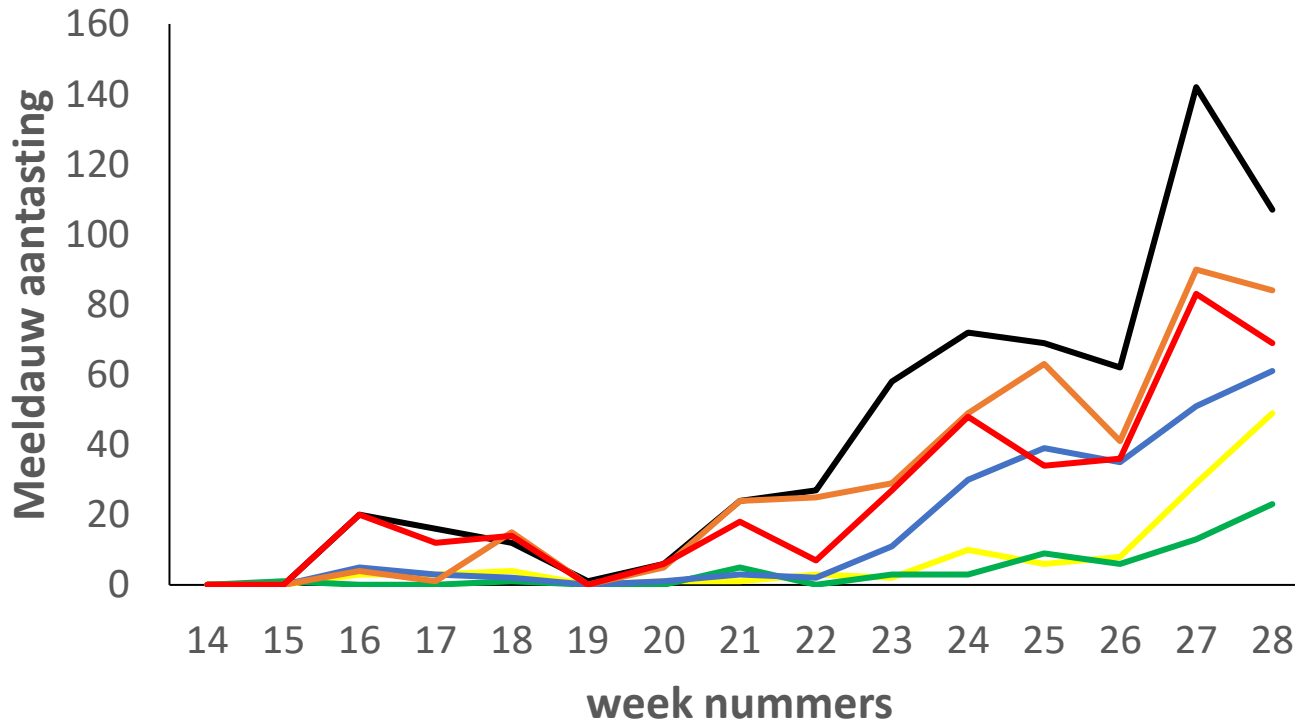
Wax Treatment Plants



UV-C/ Pulse misting



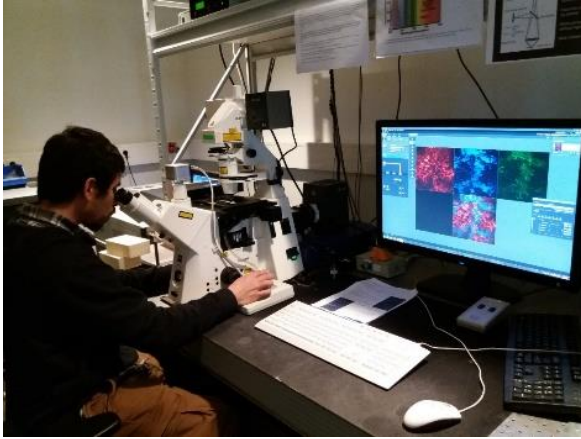
Meeldauw aardbei



week	Besparing
13	FADO + Sonata
14	FADO + Karma
15	Fado + Sonata
21	Karma gehele kas
23	Vacciplant + serenade
24	Vacciplant + Sonata
25	Vacciplant +Serenade
27	Vacciplant + Taegro
28	Vacciplant + Taegro
29	Vacciplant + Taegro

— Control — UVC — UVC/Mist — Mist — Elicitor — MeJA

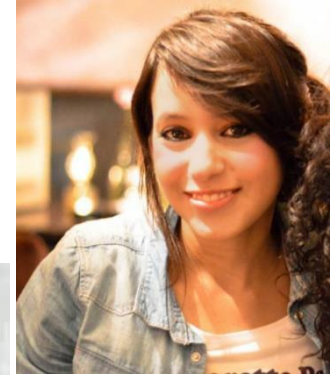
Dank



Estuardo Hernandez Olesinski



Johanna Bac-Molenaar



Sanae Mouden



Marianne Noordam



Ilias Tsafaras



Stichting
Kennis in je Kas

