

Temperature and soils predict the distribution of plant species along the Himalayan elevational gradient

Research Article

Cite this article: Maharjan SK, Sterck FJ, Raes N, and Poorter L (2022) Temperature and soils predict the distribution of plant species along the Himalayan elevational gradient. *Journal of Tropical Ecology* **38**, 58–70. <https://doi.org/10.1017/S026646742100050X>

Received: 4 June 2020
Revised: 19 October 2021
Accepted: 7 November 2021
First published online: 27 December 2021

Keywords:

Climate change; distribution range; environmental gradients; Himalayan plant species; MaxEnt; Nepal; species distribution model; temperature

Author for correspondence:

Surya Kumar Maharjan,
Emails: maharjansurya@gmail.com,
surya.maharjan@hc.tu.edu.np

Surya Kumar Maharjan^{1,2,3} , Frank J. Sterck¹, Niels Raes^{4,5}  and Lourens Poorter¹

¹Forest Ecology and Forest Management Group, Wageningen University and Research, P.O.B. 47, 6700 AA Wageningen, Netherlands; ²Rupantaran Nepal, P.O.B. 7345, Kathmandu, Nepal; ³Department of Silviculture and Forest Biology, Institute of Forestry, Tribhuvan University, Hetauda, Nepal; ⁴Naturalis Biodiversity Center, P.O.B. 9517, 2300 RA Leiden, Netherlands and ⁵NLBIF – Netherlands Biodiversity Information Facility, 2300 RA Leiden, Netherlands

Abstract

Tropical montane systems are characterized by a high plant species diversity and complex environmental gradients. Climate warming may force species to track suitable climatic conditions and shift their distribution upward, which may be particularly problematic for species with narrow elevational ranges. To better understand the fate of montane plant species in the face of climate change, we evaluated a) which environmental factors best predict the distribution of 277 plant species along the Himalayan elevational gradient in Nepal, and b) whether species elevational ranges increase with increasing elevation. To this end, we developed ecological niche models using MaxEnt by combining species survey and presence data with 19 environmental predictors. Key environmental factors that best predicted the distribution of Himalayan plant species were mean annual temperature (for 54.5% of the species) followed by soil clay content (10.2%) and slope (9.4%). Although temperature is the best predictor, it is associated with many other covariates that may explain species distribution, such as irradiance and potential evapotranspiration. Species at both ends of the Himalayan elevational gradient had narrower elevational ranges than species in the middle. Our results suggest that with further global warming, most Himalayan plant species have to migrate upward, which is especially critical for upland species with narrow distribution ranges.

Introduction

One of the central questions in ecology is what controls the distribution of species. This question has become more urgent because climate change is forcing species to track suitable climatic conditions and shift their distribution ranges either poleward or upward (Chen et al. 2011, IPCC 2014). Particularly in montane landscapes in (sub-)tropical biomes, the presence of steep mountain ranges and shallow latitudinal gradient in climatic conditions is likely to leave plant species with only one option – shifting their ranges upward. In these landscapes, such shift in species distribution ranges will be particularly problematic for plant species with narrow elevational ranges as they are likely to be forced to move upward rapidly to maintain viable population sizes, and for those living near mountain tops as smaller land surface area is available at higher elevations (Körner 2007). To better understand the fate of montane plant species in the face of climate change, it is urgently needed to understand which environmental factors best predict their distribution and how they are spatially distributed in montane landscapes.

The elevational gradient (sometimes referred to as an ‘altitudinal gradient’) is an ideal system to study the multiple factors that control species distribution, as it presents a complex, multiple-factor gradient that affects plant species distribution in multiple ways. Temperature, solar radiation, precipitation and soil properties are important determinants of plant species distribution, since they set the local site conditions and thus the abiotic niches (Hemp 2006). Temperature decreases linearly with increasing elevation, and it regulates plant metabolic rates that are vital for plant survival, growth and reproduction. Lower temperature at higher elevations may not only impair plant performance but also lead to slower soil microbial activity and other soil processes, hence lower nutrient availability (Müller et al. 2016a, Vincent et al. 2014). Under clear sky, solar radiation increases with increasing elevation because of reduced atmospheric turbidity. But the amount of solar radiation received by organisms depends on clouds and fog, and both often increase with increasing elevation (Adhikary 2012, Körner 2007). Consequently, in the areas often covered with clouds, productivity of montane species may be strongly limited by irradiance (Fyllas et al. 2017). With increasing elevation, in the subtropics, precipitation usually increases up to cloud condensation elevation and decreases beyond (Körner 2007). Montane soils are, in general, poorly developed, stony, shallow, relatively infertile and often acidic. With increasing elevation, soils become thinner, less developed and less fertile (FAO 2015).

© The Author(s), 2021. Published by Cambridge University Press. This is an Open Access article, distributed under the terms of the Creative Commons Attribution licence (<http://creativecommons.org/licenses/by/4.0/>), which permits unrestricted re-use, distribution and reproduction, provided the original article is properly cited.

CAMBRIDGE
UNIVERSITY PRESS

Precipitation, evapotranspiration, topography and soil water-holding capacity determine water availability, hence plant survival. Particularly in steep montane landscapes, thin, stony and infertile soils have a low water-holding capacity, which impedes seedling and sapling establishment (Müller et al. 2016a, 2016b). Additionally, diurnal and seasonal variability of environmental factors increase with increasing elevation (Rasmann et al. 2014) exposing high elevation plants to comparatively harsher, more stressful and variable environmental conditions. All the aforementioned environmental factors play crucial roles in shaping plant species distribution along elevational gradients; however, their relative importance is still contested (Bhattarai et al. 2004, Dubuis et al. 2013, Müller et al. 2016a).

Rapoport's elevational rule

The elevational ranges of various groups of organisms (trees, mammals, birds, reptiles, insects and amphibians) increase with increasing elevation, a phenomenon which has been coined 'Rapoport's elevational rule' (Stevens 1992). Stevens (1992) suggested that these wider ranges are the result of higher climatic variability that species experience at higher elevations. The climatic variability hypothesis (more generally the environmental variability hypothesis) posits that species occurring in climatically variable habitats, such as those at high elevations, would develop wider environmental tolerances and, hence, occupy wider elevational ranges than species occurring in climatically stable habitats, such as those at low elevations (Pintor et al. 2015, Stevens 1992). The generality of Rapoport's elevational rule is still contested – some studies found strong support for it (Pintor et al. 2015, Rasmann et al. 2014, Schellenberger Costa et al. 2018, Subedi et al. 2020), while others have found little (Feng et al. 2016) or no support (Bhattarai & Vetaas 2006, Lee et al. 2013, Vetaas & Grytnes 2002).

In this study, we focused on the Himalayan elevation gradient in Nepal because 1) it is one of the longest and steepest elevational gradients in the world, 2) it is a global hotspot of biodiversity (Mittermeier et al. 2004), 3) global warming is forcing numerous treeline species along this gradient to move upward at a rate as high as 26 m per decade (Chhetri et al. 2018, Gaire et al. 2014, Suwal et al. 2016), and 4) the distribution of species along an elevational gradient according to Rapoport's elevational rule can be tested along this gradient. Some studies have reported unimodal patterns in tree species elevational ranges along this elevational gradient (Bhattarai & Vetaas 2006, Vetaas & Grytnes 2002), while others have reported a monotonic increase in elevational ranges among other groups of plant species (Feng et al. 2016, Subedi et al. 2020) supporting Rapoport's elevational rule. These studies used an elevation band (100 m bands) approach. Firstly, based on the data on species elevational ranges in the published floral databases, they estimated species elevational ranges as the differences between the maximum and minimum elevations of species rounded to the nearest 100 m and elevational midpoints as the averages of the elevational limits of species. Then, they used average elevational ranges of all species that occur in each elevation band or species whose elevational midpoints occur in each elevation band to evaluate the relationship between species elevational ranges and elevation. However, species elevational midpoints and average elevational ranges based on presence records may not be representative of the species' elevational optima – points where species occurrence or abundance peak (Pintor et al. 2015), and elevational tolerance – the elevational range where species could actually

occur. For example, the elevational midpoint of a species with its elevational ranges between 100 and 1500 m a.s.l. is 800 m a.s.l. However, its elevational optimum may be higher or lower than 800 m a.s.l. depending on whether species abundance is left- or right-skewed. The species' elevational optima should be in the middle of species' niches rather than the middle of their elevational ranges, and the modelled ecological niches and their projected spatial distributions may provide a better measure of species' elevational tolerance than the elevation of presence records alone. Therefore, in this study, we used MaxEnt (Phillips et al. 2004, 2006) to model ecological niches and project spatial distributions of 277 plant species that are most common among the 1169 inventoried plant species and that belong to 9 different life forms and subsequently used these niches and distribution maps to calculate species' elevational optima and ranges (see Methods for details).

Here we addressed two research questions. First, which environmental factors best predict the distribution of plant species along an elevational gradient? We hypothesized that temperature would be the key environmental factor that best predicts the distribution of plant species along an elevational gradient because it 1) decreases predictably with elevation, 2) directly influences plant physiology and soil processes vital for plant survival, growth and reproduction, and 3) constrains growth of plant species by controlling growing season length. Second, how do species' elevational ranges change with elevation along an elevational gradient? We hypothesized that plant species living at high elevations, where environmental conditions are harsher, more stressful and variable, would have wider physiological tolerances to environmental conditions and occupy broader elevational ranges compared to plant species living at low elevations, where environmental conditions are more benign and stable, according to Rapoport's elevational rule (Pintor et al. 2015, Stevens 1992).

Methods

Study site

For our study, we selected the Himalayan elevational gradient in Nepal, one of the longest and steepest elevational gradients in the world. Within a horizontal span of mere 200 km, elevation varies from 60 m a.s.l. in the south to the highest peak of the world in the north (HMGN/MFSC 2002) resulting in a roughly south-facing elevational gradient. Along the gradient, trees can grow at up to 4000 m a.s.l. (treeline) while alpine meadows can be found at up to 5000 m a.s.l. (TISC 2002). Temperature decreases linearly along this gradient (Lillesø et al. 2005), and precipitation shows a mid-elevation maximum (Acharya et al. 2011, Kansakar et al. 2004). This gives rise to an extensive bioclimatic gradient ranging from wet, warm and stable tropical climate in the lowlands in south to cold, more stressful and variable alpine climate in the Himalayas in the north (HMGN/MFSC 2002, Lillesø et al. 2005). As a result of this elevation-driven variation in environmental conditions and habitats, Nepal is a home to disproportionately higher percentage of the world's flora and fauna (5.1% of gymnosperms, 2.7% of angiosperms, 9.3% of birds and 4.5% of mammals in 0.1% of global land area, HMGN/MFSC 2002) – a global hotspot of biodiversity (Mittermeier et al. 2004).

MaxEnt

As modelled ecological niches and their projected spatial distributions may provide a better measure of species' elevational tolerance

than the elevation of presence records alone, we used a modelling approach. MaxEnt version 3.3.3k (Phillips *et al.* 2004, 2006) was selected over other species distribution modelling (SDM) algorithms because 1) it is a powerful presence-only SDM algorithm that can efficiently handle complex interactions between species presence records and environmental predictors (Elith *et al.* 2006, 2011), 2) it makes relatively accurate predictions with small number of presence records (Pearson *et al.* 2007, van Proosdij *et al.* 2016, Wisz *et al.* 2008), 3) it has been reported to outperform other SDM algorithms (Aguirre-Gutiérrez *et al.* 2013, Elith *et al.* 2006, Giovanelli *et al.* 2010, Hao *et al.* 2020, Merckx *et al.* 2011, Wisz *et al.* 2008), 4) it does not require species absence records which are difficult to confirm (MacKenzie 2005, Raes & Aguirre-Gutiérrez 2018), and 5) it allows using all species presence records available in floral databases and natural history collections. For their improved predictive performances, ensemble models are increasingly being used for SDM (Aguirre-Gutiérrez *et al.* 2013, Araújo & New 2007, Hao *et al.* 2020). However, it is very difficult to estimate contributions of individual environmental variables to the final species distribution model from an ensemble model. As one of our main aims is to identify key environmental factors that best predict plant species distribution along the elevational gradient (factors contributing the most to species distribution models), MaxEnt alone was used instead of ensemble of different SDM algorithms. MaxEnt uses species presence records, environmental predictors and randomly drawn background samples to model species' ecological niches and project their spatial distributions.

Study species and their presence records

The national forest inventory (2010–2014) undertaken by Forest Research and Training Centre (then Department of Forest Research and Survey) Nepal served as the main source of species presence records. Two-phase stratified systematic cluster sampling was used for the inventory. In the first phase, Nepal was divided into 4 × 4 km grids. At each grid node, a sample cluster of 4–6 concentric circular plots (four (2 × 2) plots 300 m apart in north-south and east-west directions in lowlands with relatively homogenous forests, and six (3 × 2) plots 150 m apart in north-south and 300 m apart in east-west directions in hills and mountains with heterogeneous forests) was positioned starting at the grid node and moving first towards north and then towards east. Each plot had four concentric circular subplots of radii 4, 8, 15 and 20 m that were used to identify the trees to species and measure individual stem diameter at breast height (DBH), and tree height of trees of DBH ranges 5–9.9, 10–19.9, 20–29.9 and 30 cm and more, respectively. In addition to that each plot had four 1 m² subplots each located 5 m away from the centre of the plot in four cardinal directions that were used to assess species-wise stem count of non-woody vascular plants. Next, each plot had four circular subplots of 2 m radii each located 10 m away from the centre of the plot in four cardinal directions that were used to assess species-wise stem count and mean height of seedlings, saplings and shrubs with DBH < 5 cm. In the second phase, 450 sample clusters representing 2544 sample plots located in the forests below 4000 m a.s.l. and with a slope < 45° were selected for field measurements (for details see DFRS 2015). Of these 2544 sample plots, we used species presence data from 2039 sample plots for which plant species were reliably identified to species level. Plant species names were standardized using multiple sources (Tropicos, Taxonomic Name Resolution Service, The

Plant List and The International Plant Names Index) and, in case of discrepancies, verified by a taxonomist from Tribhuvan University, Nepal, to synonymize all taxonomic names to their currently accepted taxonomic names. In case of conflict, the currently accepted taxonomic names in The Plant List were used. Finally, of the 1169 inventoried plant species, 333 species (167 tree, 85 shrub, 31 herb, 14 fern, 14 grass, 14 liana, 5 orchid, 2 palm and 1 sedge species) were recorded in at least 10 unique sample plots and were selected for the study. The detailed list of the selected plant species is presented in Supplementary Table 1. Orchid was used as a separate life form to be consistent with the national forest inventory, Nepal database – that was used as the main source of species presence records for this study.

To supplement the aforementioned surveyed presence records, additional presence records were compiled from the online floral databases (Global Biodiversity Information Facility: <http://www.gbif.org>, Integrated Digitized Biocollections: <http://www.idigbio.org> and iNaturalist: <http://www.inaturalist.org>) and supplementary fieldwork (undertaken in Oct–Dec 2017). Both currently accepted taxonomic names and their unambiguous synonyms retrieved from The Plant List – that was used as the starting point for the taxonomic backbone of the World Flora Online – were used to download presence records from the online floral databases. Citations for the records thus downloaded are presented in Supplementary Table 4.

Cleaning species presence records

The species presence records were cleaned in two steps. In the first step, all duplicate records (using currently accepted taxonomic names and their synonyms to download records from the online floral databases returned duplicate records); records based on fossil specimens, and plants not from wild; records with missing coordinates, zero coordinates, coordinates with latitude = longitude (impossible in case of Nepal), invalid coordinates, and coordinates likely to be based on country centroids or country capitals (records within threshold of 0.0083 degrees \approx 1 km of country centroids or country capitals); records with coordinates country mismatch; and records with coordinates uncertainty \geq 1 km were removed using process described in the R package *speciesgeocodeR* (Zizka & Antonelli 2015). To avoid pseudo-replication, all duplicates at 0.0083 degrees \approx 1 km spatial resolution (also the raster resolution of environmental predictors, see below) were also removed.

In the second step, species' elevational ranges reported in published literature (Fraser-Jenkins *et al.* 2015, Fraser-Jenkins & Kandel 2019, <http://www.efloras.org/> 2019, Jackson 1994, Paudyal & Haq 2008, Rajbhandari & Rai 2019, Shrestha *et al.* 2018) were used to identify and discard doubtful presence records, that is presence records beyond the reported species' elevational ranges. Furthermore, to make sure the cleaned presence records are representative of the reported species' elevational ranges, species with presence records covering < 50% of the reported elevational ranges were also discarded. This reduced the number of spatially unique presence records to 10 775 and the number of selected plant species to 281 with per species spatially unique presence records ranging from 3–324. Since cleaning of species presence records reduced the number of spatially unique presence records of four out of 281 species to less than five, that is the absolute minimum number of presence records required for MaxEnt modelling (Pearson *et al.* 2007, van Proosdij *et al.* 2016), only 277 species (143 tree, 76 shrub, 23 herb, 13 grass, 9 liana, 7 fern,

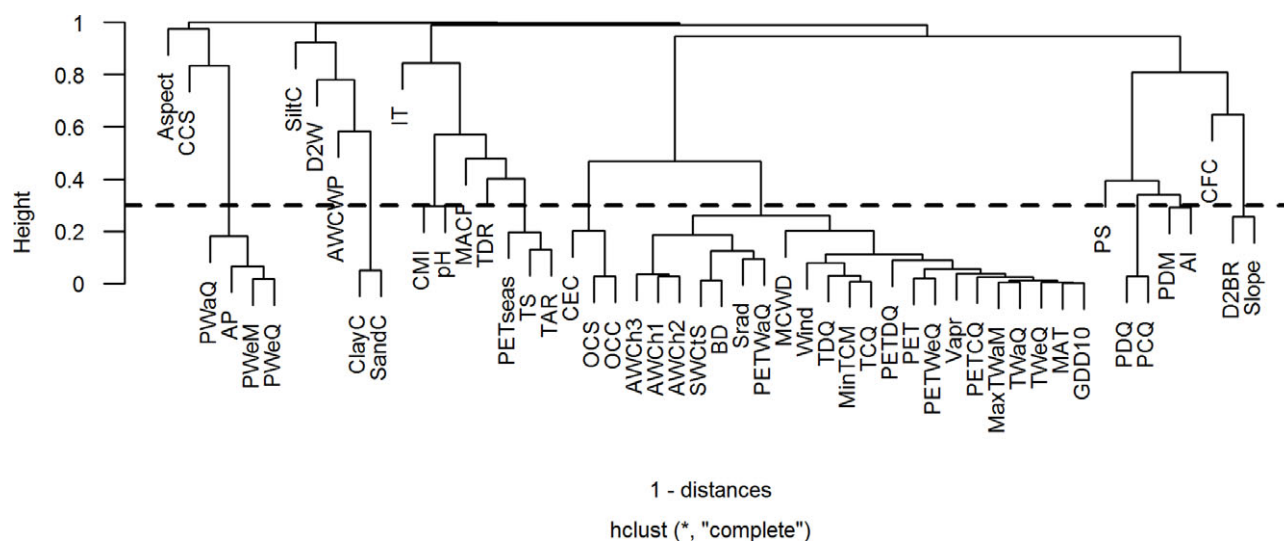


Figure 1. Cluster dendrogram showing correlation among environmental variables. Fifty-two environmental variables (elevation excluded) of 1437 spatially unique presence locations were used for the correlation analysis. In this case, a height of 0.3, indicated by dotted line, is taken as a threshold. Height is defined as $1 - \text{Spearman's rank correlation coefficient}$. All the variables with height ≤ 0.3 (or Spearman's rank correlation coefficient ≥ 0.7) are considered highly correlated. Details of environmental variable abbreviations used in the plot are presented in Supplementary Table 2.

4 orchid, 1 palm and 1 sedge species) were considered for further analysis.

Environmental predictors

To avoid edge effects as result of modelling truncated niches (Raes 2012), we defined Nepal plus 200 km buffer surrounding the Nepalese border as our area of interest. We included this buffer to include a wide range of environmental conditions, so that it is easier to model the drivers of species distribution. To relate species presence records to environmental predictors, 53 climatic, topographic and edaphic variables were compiled. Freely available global datasets were downloaded, cropped to the area of interest, and aggregated to 30 arc-seconds (~ 1 km) spatial resolution, as and when necessary. Climatic variables (monthly temperature, precipitation, solar radiation, wind speed and water vapour pressure, and 19 bioclimatic variables) were downloaded from WorldClim (<http://worldclim.org/version2>, Fick & Hijmans 2017). WorldClim 2 was selected because it has improved estimates for areas with low station density and areas with sharp gradients such as rain-shadows (Fick & Hijmans 2017). Mean annual solar radiation, wind speed and water vapour pressure were computed using WorldClim 2 monthly data. Aridity (Thornthwaite's aridity index), climatic moisture index, growing degree days (base temperature = 10°C) and potential evapotranspiration (annual PET, PET extremes and PET seasonality) were computed using WorldClim 2 monthly data using ENVIREM R package (Title & Bemmels 2018). Cloud cover variables (mean annual cloud frequency and cloud cover seasonality) were downloaded from EarthEnv (<http://www.earthenv.org/cloud>, Wilson & Jetz 2016). Maximum climatic water deficit (MCWD) was computed using WorldClim 2 monthly data based on Malhi et al. 2009.

Soil variables were downloaded from ISRIC-SoilGrids (<ftp://ftp.soilgrids.org/data/aggregated/1km/>, Hengl et al. 2017). SoilGrids provides predictions at seven standard depths (0, 5, 15, 30, 60, 100 and 200 cm) for standard soil variables like organic carbon, bulk density, cation exchange capacity (CEC), pH, soil texture fractions, coarse fragments, available water capacity and water content.

As topsoil conditions determine whether a seedling can establish or not, the first four SoilGrids layers were used to compute the weighted average over a depth interval of 0–30 cm, that is topsoil, using trapezoidal rule for numerical integration (Hengl et al. 2017).

Topographic variables like elevation, aspect and slope were computed using digital elevation model downloaded from CGIAR-CSI (<https://cgiasi.community/data/srtm-90m-digital-elevation-database-v4-1/>). Finally, distance to water sources was computed using river network data downloaded from HydroSHEDS (<http://www.hydrosheds.org/>) and global lakes and wetlands data downloaded from WWF (<https://www.worldwildlife.org/pages/global-lakes-and-wetlands-database>). The detailed list of thus compiled 53 environmental variables is presented in Supplementary Table 2.

Selection of environmental predictors for MaxEnt modelling

As multicollinearity among environmental variables can distort model estimation and prediction, we used a Spearman's rank correlation coefficient of 0.7 as threshold to identify highly correlated environmental variables (Dormann et al. 2013). Correlations among environmental variables are presented as a cluster dendrogram and as a bivariate correlation matrix in Figure 1 and Supplementary Table 3, respectively. Then, to identify the variables that best describe the ecological variations along the studied elevational gradient, we used a principal component analysis (PCA). Loadings of environmental variables along the first two principal components are presented in Supplementary Figure 1. As we were interested in modelling elevational distributions of species based on their observed presence records, we used 52 environmental variables (elevation excluded) of 1437 spatially unique presence locations (of 281 species left after cleaning) for correlation analysis and PCA. Also, the results were similar when doing correlation analysis and PCA on the whole area of interest (data not shown). Highly correlated environmental variables are not necessarily ecologically redundant, but they often have the same spatial patterns and cannot always be distinguished. Therefore, from each cluster of highly correlated variables, we selected one variable that

Table 1. List of 19 least correlated environmental variables selected for this study. Variable categories, sub-categories, names and their corresponding units and abbreviations are shown.

SN	Environmental variable			
	Category	Sub-category	Name and unit	Abbreviation
1	Climatic	Temperature	Isothermality (Mean temperature diurnal range/Temperature annual range) * 100	IT
2			Mean annual temperature (°C)	MAT
3			Mean temperature diurnal range (Mean of monthly (maximum temperature - minimum temperature) °C)	TDR
4			Temperature annual range (Maximum temperature of warmest month - Minimum temperature of coldest month, °C)	TAR
5		Precipitation	Annual precipitation (mm)	AP
6			Precipitation of driest quarter (mm)	PDQ
7			Precipitation seasonality (coefficient of variation)	PS
8		Other climatic	Cloud cover seasonality (standard deviation * 100)	CCS
9			Mean annual cloud frequency (% * 100)	MACF
10			Thornthwaite's aridity index	AI
11	Edaphic	Chemical	Soil organic carbon content (gm/kg)	OCC
12			Soil pH * 10 in water	pH
13		Physical	Available soil water capacity until wilting point (%)	AWCWP
14			Soil clay content (%)	ClayC
15			Soil coarse fragments content (%)	CFC
16			Soil silt content (%)	SiltC
17	Topographic	Aspect (deg)	Aspect	
18		Distance to water (arc sec)	D2W	
19		Slope (deg)	Slope	

was thought to be the ecologically most relevant factor that determines the elevational distribution of species and/or that had highest loading along one of the first three principal components. This resulted in a selection of 19 least correlated environmental variables (10 climatic, 6 edaphic and 3 topographic, Table 1). To represent the cluster of correlated temperature (e.g. temperature extremes) and non-temperature variables (such as irradiance and PET), we selected mean annual temperature (MAT). Although temperature extremes (e.g. maximum temperature of warmest month, minimum temperature of coldest month) may co-shape species distribution boundaries, we believe that MAT is more important in shaping species performance and distribution. Across the 1437 spatially unique presence locations, MAT is closely correlated with maximum temperature of warmest month (Spearman's rank $r = 0.99$, $p < 0.001$) and with minimum temperature of coldest month (Spearman's rank $r = 0.98$, $p < 0.001$). Hence, to avoid multicollinearity problems we used only MAT, as it captures both the variation in summer and winter temperature, and the average growing conditions during the year.

MaxEnt modelling

Samples with data (SWD) format of MaxEnt version 3.3.3k (Phillips 2010) in R package dismo (Hijmans *et al.* 2017) were used to construct species distribution models for 277 plant species. As we were interested in modelling elevational distributions of species

based on their observed presence records, we used 1437 spatially unique presence locations as background sample. To comply with the ecological theory that species responses to environmental gradients are often unimodal (Austin 2007), MaxEnt was restricted to use only linear and quadratic features (Boucher-Lalonde *et al.* 2012, Merow *et al.* 2013), where linear features represent one side of a unimodal response due to partial representation of the entire gradient.

To test the significance of the models, we compared the AUC (area under the receiver operating characteristic curve) values of the models to the AUC values of the bias-corrected null models, that is models based on the random presence records (Raes & Ter Steege 2007). For this, for each species, 100 bias-corrected null models were constructed with the presence records randomly drawn from 1437 spatially unique presence records. The number of randomly drawn presence records was kept equal to the number of true presence records of the target species. The models with AUC values $> 95^{\text{th}}$ percentile AUC value of the null models were considered to perform significantly better than expected by chance. Only the significant models were retained for further analysis.

Data analysis

To evaluate which environmental factors best predict the distribution of plant species along an elevational gradient, we analysed the frequency with which environmental variables were found

to be the most important (cf. Bradie & Leung 2016). For this, for each species with a significant species distribution model, we identified the environmental variable that contributed the most to the model (i.e. the most important environmental variable) based on the relative percentage contributions of the variables to the model.

To test whether species elevational ranges increase with increasing elevation along an elevational gradient, a simple linear regression was carried out with species' elevational ranges and elevational optima. For this, firstly, all significant species distribution models were projected onto the geographical space using MaxEnt's 'density.Project' function to derive probability of occurrence maps for the entire study area. Secondly, these maps were reclassified using '10 percentile training presence logistic threshold' (one of the most conservative and absence independent thresholds in MaxEnt) to produce discrete presence-absence maps, that is species distribution maps (Liu et al. 2011). Finally, these species distribution maps were used to compute species' elevational distribution parameters, that is the elevational minimum, maximum, optimum and range. To have a conservative estimate of a species' elevational distribution parameters, the 5th and 95th percentile elevation values were used as estimates of the elevational 'minimum' and 'maximum', respectively. The difference between elevational maximum and minimum was used as an estimate of the elevational 'range'. The mid-value of the elevation class with the highest proportion of pixels predicted to be occupied was used as an estimate of the elevational 'optimum'. For this, the distribution map of each species was classed into 100 m elevational bins, and for each elevational bin, the proportion of pixels predicted to be occupied was calculated. This procedure effectively corrects for the smaller available surface area at higher elevational bins. All calculations and analyses were done with R-3.4.3 (R Core Team 2017).

Limitations of methods

A few methodological limitations might have influenced our results. First, we used global environmental datasets with a spatial resolution of 1 × 1 km as sources of our environmental predictors. It is likely that these datasets did not fully capture all the local details in the Himalayas because i) the environmental conditions may vary over short distances in the Himalayas, and ii) the observed data that are bases of these global interpolations are sparse in the Himalayas (Deblauwe et al. 2016). However, in absence of reliable national/regional datasets these were the best datasets available for the study area.

Second, although it is established that species distributions are jointly regulated by abiotic environments and biotic interactions (e.g. Godsoe et al. 2017, MacArthur 1972, Peterson et al. 2011, Soberón & Peterson 2005, Wisz et al. 2013), we did not account for biotic interactions as predictor variables in our study because biotic interactions are inherently complex, and especially so when we consider several species at a time. Moreover, although changes in land use may affect species distributions, we only focused here on natural forest vegetation and did not include land use change in the analysis. For example, in Nepal, nearly two-thirds of the total forest area is affected by grazing by free roaming cattle (DFRS 2015). Because standardized country-wide data on the occurrence and intensity of grazing are not available, we only focused on how climatic, edaphic and topographic environmental variables affect species distribution ranges.

Results

Out of 277 species, 255 species (92%) had distribution models performing significantly better than expected by chance. Only the significant models were retained for further analysis. Examples of the predicted species distribution maps are shown in Figure 2.

Environmental factors predicting the distribution of plant species along the elevational gradient

All 255 species had a relationship with one or more of the environmental predictors. Mean annual temperature followed by soil clay content (ClayC) and slope were the most important environmental variables predicting the distribution of plant species along the elevational gradient. MAT contributed the most to the distributions of 139 out of 255 species (54.5%), followed by ClayC (10.2%) and slope (9.4%) (Figure 3). Examples of species' response to MAT, ClayC and slope are shown in Figure 4. Spatial GIS maps of these three environmental variables are presented in Supplementary Figure 2.

Relationship between elevational ranges and elevation along the elevational gradient

The species elevational ranges initially increased with the elevational optima of the species, but this increase peaked between 2000 and 3000 m a.s.l. and then decreased beyond 3000 m a.s.l. (Figure 5, $adj.r^2 = 0.47$, $p < 0.001$). Also, the results were similar when regression analysis was carried out with species elevational ranges and elevational midpoints (the averages of the lowest and highest elevations of species; data not shown). The majority of species had their elevational optima at or towards the lower end of the elevational gradient. There were comparatively more tree species at low elevations and more shrub species at high elevations. Liana species occurred mainly in the lowlands. As some of the life forms, for example fern, orchid and sedge had too few species for the comparison, we pooled them into a non-woody class together with herbs and grasses for this analysis. Some species showed wide distribution ranges irrespective of their elevational optima, for example *Stephania japonica* var. *discolor* (Blume) Forman and *Cotoneaster ellipticus* (Lindl.) Loudon (Figure 5).

Discussion

We evaluated which environmental factors predict the distribution of plant species along an elevational gradient, and whether species' elevational ranges increase with increasing elevation. We found that MAT followed by ClayC and slope are the key environmental factors predicting the distribution of plant species along an elevational gradient. Species elevational ranges showed a unimodal relationship with elevation.

It should be acknowledged that the importance of environmental factors may change with varying spatial scales of analysis (Blundo et al. 2012). For example, we used environmental datasets with a spatial resolution of 1 × 1 km, which may conceal more subtle responses to local topography and elevational gradients. However, since our studied elevational gradient is very large (60 m a.s.l. in the south to 8848 m a.s.l. in the north), we think this is less of a problem. It should also be acknowledged that we describe statistical relationships between species distribution and environmental variables and that correlation does not necessarily

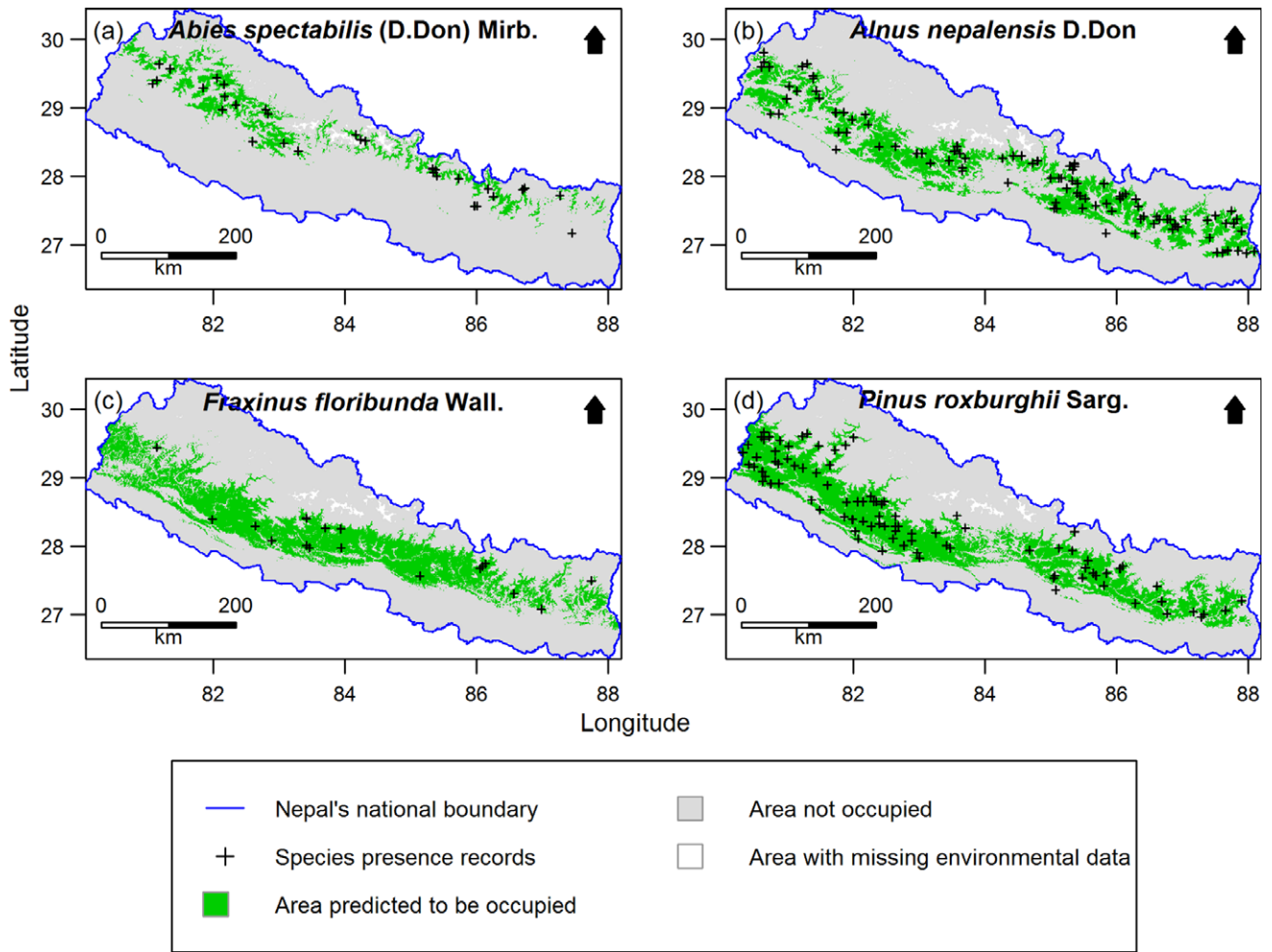


Figure 2. Examples of species distribution maps for four plant species as predicted by MaxEnt: a) *Abies spectabilis*, b) *Alnus nepalensis*, c) *Fraxinus floribunda* and d) *Pinus roxburghii*. Maps are clipped to Nepal. The blue line indicates national boundary of Nepal. The Government of Nepal published on 20th May 2020 a new political map including Kalapani, Lipulekh and Limpiyadhura inside the Nepal borders. As our research started in 2016, in our research, we used the previous version of map without these territories. Species presence records outside the green distribution areas represent the 10% of the presence records with the lowest MaxEnt probability of occurrence values used to threshold the distribution maps. Areas with missing environmental data were excluded from MaxEnt modelling.

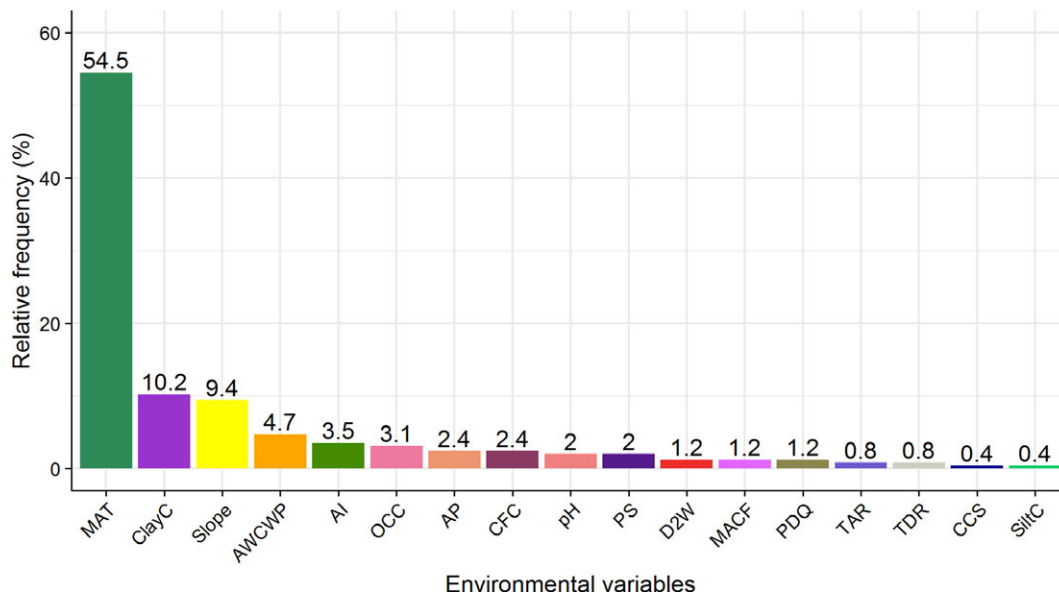


Figure 3. Relative frequencies of environmental variables that had the highest contribution to the significant distribution models of 255 Himalayan plant species. The three most important variables were mean annual temperature (MAT), soil clay content (ClayC) and slope. For abbreviations of the other environmental variables, see Table 1.

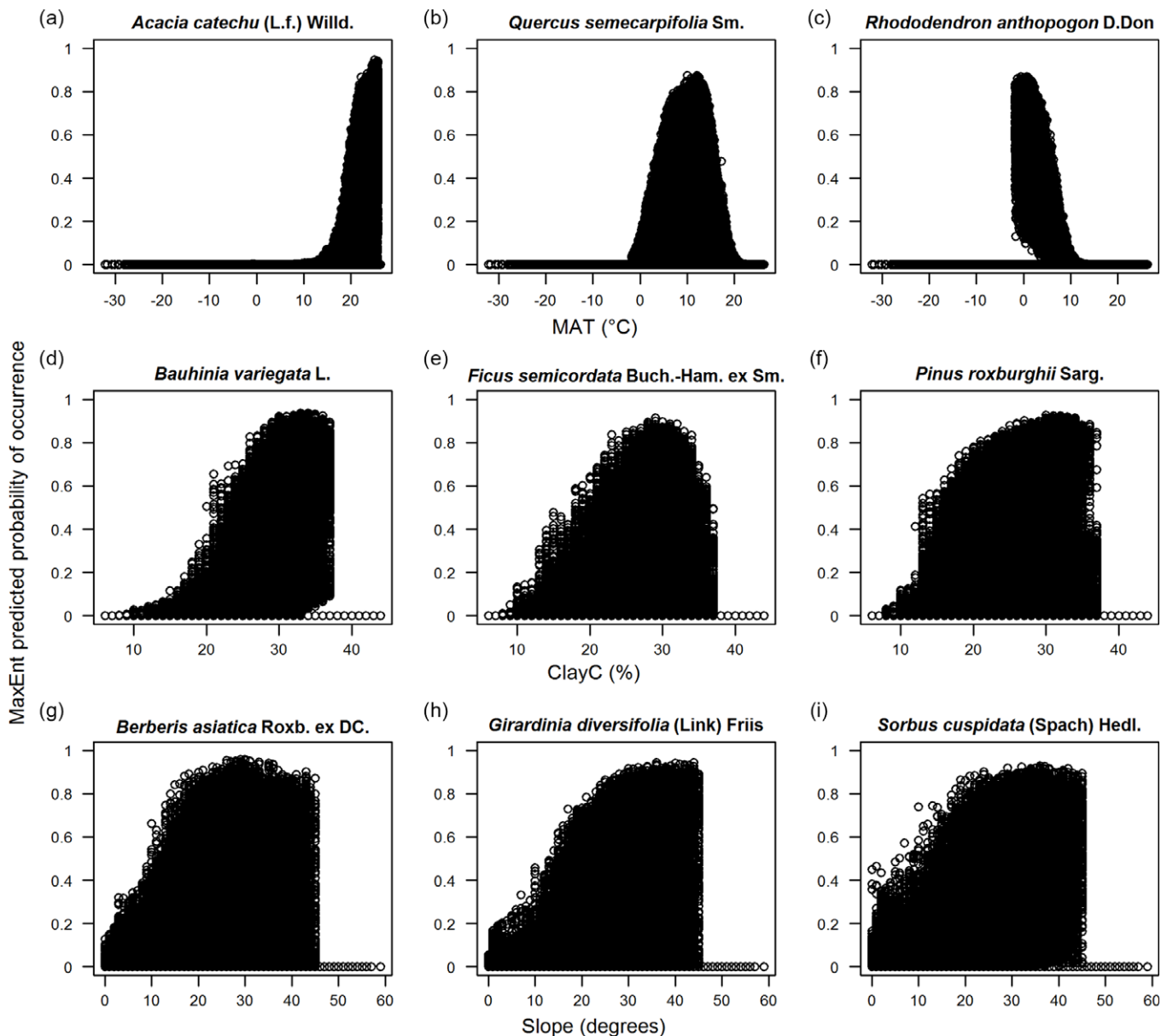


Figure 4. Examples of probabilities of species occurrence as predicted by MaxEnt in relation to a) mean annual temperature (MAT, top panels), b) soil clay content (ClayC, middle panels) and c) slope (bottom panels). Each point represents one of the 906 794 1 × 1 km grids of the study area.

mean mechanistic causation, although there are clear physiological and ecological reasons why these environmental variables may be important. Below we discuss the mechanisms likely to underlie the aforementioned elevational patterns that we found and the likely effects of future global warming on plant species distributions along an elevational gradient.

Environmental factors predicting the distribution of plant species along the elevational gradient

Climatic factors

Temperature. We hypothesized that temperature would be the key environmental factor predicting the distribution of plant species along the elevational gradient because it directly influences plant metabolic rates and physiological processes, and controls growing season length. MAT indeed contributed the most to the distributions of the majority (54.5%) of the Himalayan plant species

(Figure 3), suggesting that MAT is the core factor shaping the distribution of species in the Himalayas (Angelo & Daehler 2015, Chhetri et al. 2018, Guisan et al. 1998). However, MAT correlated closely with a suite of other temperature and non-temperature environmental variables (Figure 1). The majority of these variables are, quite similar to MAT, like mean temperatures of different quarters (e.g. coldest, warmest, driest and wettest quarters), and temperature extremes (e.g. minimum temperature of coldest month and maximum temperature of warmest month) while others are derived or directly related to temperature like growing degree days and PET. However, other variables that correlated with MAT, like solar radiation, water vapour pressure, wind speed, maximum climatological water deficit and edaphic variables like available soil water content and bulk density are not directly linked to temperature. These variables could affect species distributions through very different ecological mechanisms than MAT. In this sense, our current approach of selecting one

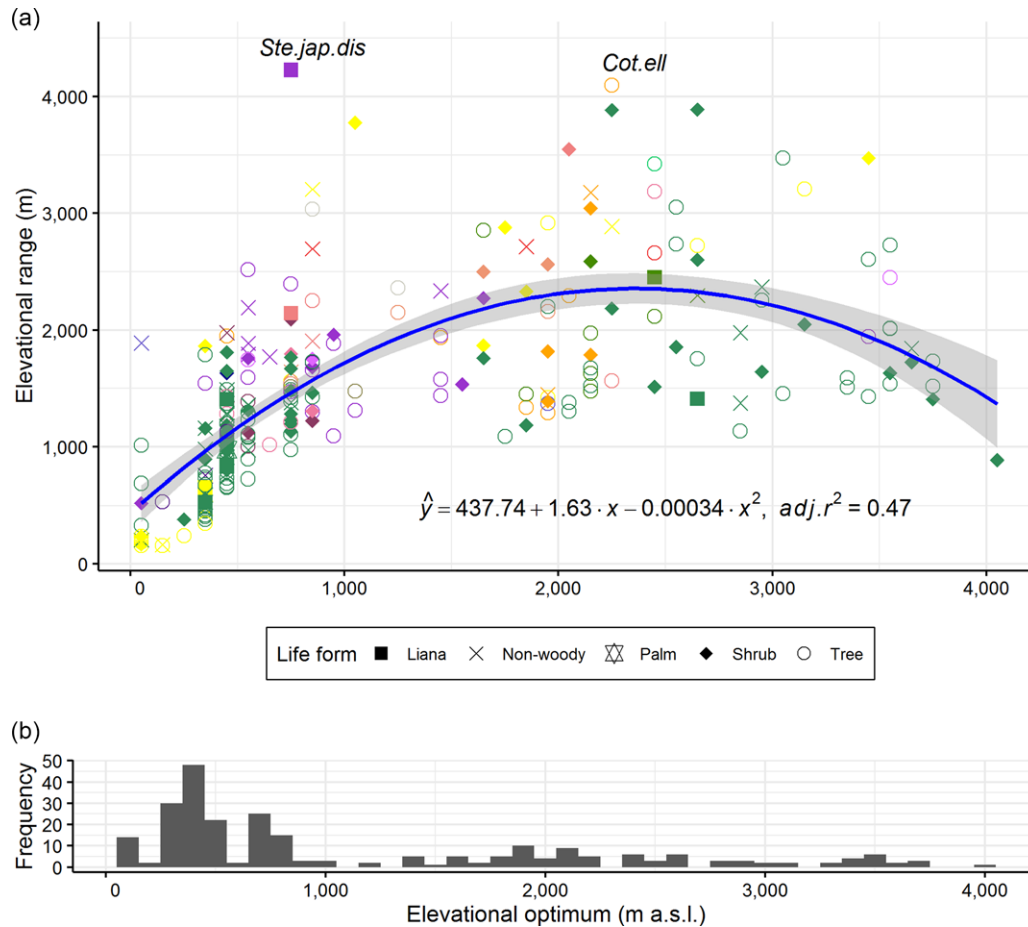


Figure 5. Relationship between elevational range and elevational optimum for 255 Himalayan plant species (represented by coloured shapes). Shapes correspond to life forms of the studied species. Ferns, grasses, herbs, orchids and sedges were grouped into a single non-woody class. Colours of shapes correspond to colours of environmental variables contributing the most to the models in Figure 3. Regression line and coefficient of determination ($adj.r^2$) are shown. Shade around regression line indicates 95% confidence interval. Both intercept and slopes are significant at $p < 0.001$. $Adj.r^2$ went up to 0.49 without outliers, that is without species labelled with their name abbreviations. Species name abbreviations used in the plot refer to first three letters of their genus, species and variety. The species list is shown in Supplementary Table 1. Histogram bars in the bottom panel are frequencies of species elevational optima along the gradient.

variable from each cluster of highly correlated variables for SDM did not allow to tease apart a single ecological mechanism regulating plant niches along the elevational gradient. Nevertheless, it has been useful in highlighting the relative importance of temperature and its associated temperature and non-temperature covariates in shaping plant niches along the gradient (cf. Whittaker 1967).

Precipitation. Precipitation affects species distributions along African mountains and lowlands (Amissah et al. 2014, Maharjan et al. 2011, Schmitt et al. 2013) and in Neotropical lowlands (Toledo et al. 2012), but in Nepal aridity and annual precipitation were only fifth and seventh in importance for determining species distributions (Figure 3). Precipitation in Nepal is driven by summer monsoon and winter westerlies. Summer monsoon enters Nepal from the east and migrates west, as east-west ranging Himalayas deflect the monsoon winds westwards and prevent northward penetration. Additionally, in winter, westerlies supply precipitation to the northwest mountains. Because of the topographic barrier posed by east-west ranging Himalayas, precipitation in Nepal is more region-specific rather than showing a strong trend with elevation (Kansakar et al. 2004, Lillesø et al.

2005). This region-specific nature of precipitation in Nepal may have weakened the roles of precipitation and aridity in defining plant species distributions along the elevational gradient.

Irradiance. Many tropical forests are light-limited. In Peru, irradiance was, surprisingly, one of the key environmental factors regulating forest productivity along an Andean elevational gradient (Fyllas et al. 2017). This suggests that irradiance could also affect plant species distributions along the elevational gradient in Nepal. A strong positive correlation between solar radiation and MAT ($r = 0.84$, $p < 0.001$, Supplementary Table 3) suggests that Himalayan plant species distribution could also be predicted by growth potential and carbon gain (cf. Maharjan et al. 2011, Sterck et al. 2014). Yet, this is not very likely, as cloud cover (i.e. mean annual cloud frequency and cloud cover seasonality), which is another good proxy for irradiance, hardly affected the distribution of plant species (Figure 3).

Edaphic factors

Soil clay content. Soil clay content was the second most important environmental factor predicting the distribution of 10.2% of the species (Figure 3). A high soil clay content improves water

availability for plants as soils with many small clay particles have a larger surface area that increases the soil water-holding capacity (r with available soil water capacity until wilting point = 0.42, $p < 0.001$, Supplementary Table 3), which positively affects water uptake, plant water status, evaporative cooling and carbon gain. Counterintuitively, soil clay content was negatively correlated with soil nutrient availability (r with soil CEC = -0.44 , $p < 0.001$; r with soil organic carbon content = -0.69 , $p < 0.001$, Supplementary Table 3). Perhaps, in case of relatively young mountains such as the Himalayas, higher temperature and precipitation in the lowlands are accompanied by increased weathering and leaching, resulting in nutrient-poor clayey soils, whereas in the highlands exposed bedrock and recent weathering may result in nutrient-rich soils. This suggests that plants growing at low elevations may therefore be limited by low nutrient availability whereas plants growing at high elevations may be limited by water scarcity. In general, our results support previous findings that inclusion of edaphic variables considerably improves the prediction of species distribution along elevational gradients (Cianfrani et al. 2019, Dubuis et al. 2013, Walthert & Meier 2017).

Topographic factors

Slope. Slope was the third most important environmental factor predicting the distribution of 9.4% of the species (Figure 3). Areas with steep slopes are typical for relatively young mountains such as the Himalayas. They provide extreme conditions for plants, as they are less stable, suffer more from water run-off (Mu et al. 2015) and erosion (Cha & Kim 2011). Steep slopes are also more shallow (r between slope and depth to bedrock = -0.74 , $p < 0.001$, Supplementary Table 3), which reduces the opportunity for rooting and water and nutrient uptake. Topographic variation in slopes may range from crests to slopes and valleys, which results in a marked edaphic and hydrological gradient that might be partitioned by different plant species (Huggett 2004, Schiatti et al. 2014).

Elevational distribution ranges are widest for plant species from intermediate elevation

In line with Rapoport's elevational rule, we hypothesized that plant species from high elevations (where environmental conditions are harsher, more stressful and variable) would have wider physiological tolerances to environmental conditions and therefore occupy broader elevational ranges than plant species from low elevations, that experience more benign and stable environmental conditions (Pintor et al. 2015, Stevens 1992). In contrast, we found that species distribution ranges were widest for species that had their optimum between 2000 and 3000 m a.s.l. elevation (Figure 5). Earlier Himalayan studies (Bhattarai & Vetaas 2006, Vetaas & Grytnes 2002) suggested that in the lowlands and highlands, a high species richness (overall species richness in the lowlands and endemic species richness in the highlands) may lead to stronger interspecific competition and narrower species ranges. Schellenberger Costa et al. (2018) have confirmed this stronger interspecific competition hypothesis for the lower slopes of Mt. Kilimanjaro. Compliant with the suggestion, the majority of the studied species had their elevational optimum at or towards the lowlands (Figure 5). Alternatively, broad elevational ranges at the middle of the gradient could be the result of a mid-domain effect (Colwell & Hurr 1994) in which species with broad elevational ranges are bound to have their elevational optima closer

to the centre of the domain (cf. Bhattarai & Vetaas 2006, Colwell & Lees 2000).

Potential effects of climate change on future distribution of plant species

Our results suggest that temperature and its temperature (e.g. temperature extremes) and non-temperature covariates (such as irradiance and PET) followed by soil clay content and slope are the key environmental factors predicting the distribution of plant species along the Himalayan elevational gradient and that species at both ends of the Himalayan elevational gradient have narrower elevational ranges than species in the middle. With further global warming, these species will be forced to 1) acclimate or adapt to the changed conditions, 2) track suitable climatic ranges through dispersal and move upward, or 3) go extinct. Thus, as long as competition of plants from the lowlands does not affect the distribution of mid-elevation species, their distribution might be less affected by climate warming as they occupy broad elevational ranges. In contrast, given the identified species ranges are due to abiotic conditions and the lowland species are likely already living at their thermal maximums, the distribution of warm-adapted and cold-adapted species at both ends of the gradient might be affected more by climate warming because they occupy narrower elevational ranges. All plant species have, to a certain extent, the ability to acclimate physiologically to increased warming (Slot & Winter 2017), but the question is whether these species will not be outcompeted by warm-adapted species that move upwards. Furthermore, it is likely that lowland species are already living at their thermal maximums. Thus, tracking suitable climatic ranges could probably be the best long-term survival strategy. Given a maximum predicted warming of 0.35 °C per decade in South Asia (IPCC 2013), and a thermal lapse rate of 0.5 °C per 100 m (Barry 1992), the species should move 70 m per decade. This is only feasible when elevational corridors are available or through assisted regeneration. However, assisted regeneration at such a scale would be challenging. Consequently, the Himalayan plant species may face an uncertain future in the face of climate change.

Supplementary material. To view supplementary material for this article, please visit <https://doi.org/10.1017/S026646742100050X>

Acknowledgements. We would like to thank Forest Research and Training Centre (FR&TC), Nepal for plot level species presence data. We would also like to thank Mr. Yam Prasad Pokharel, Joint-Secretary, FR&TC, Dr. Buddi Sagar Poudel, Joint-Secretary, FR&TC, and Mr. Shiva Khanal, Under-Secretary, FR&TC for their support during data processing; and the Department of Forests, Nepal, and the Department of National Parks and Wildlife Conservation, Nepal and their respective district forest and protected area authorities for their support during the fieldwork.

Financial support. S.K.M. was supported by Wageningen University and Research sandwich PhD grant. Fieldwork was funded by Stichting het Kronendak, The Rufford Foundation and KNAW Fonds Ecologie.

Conflict of interest. None

Ethical statement. NA

References

- Acharya KP, Vetaas OR and Birks HJB (2011) Orchid species richness along Himalayan elevational gradients. *Journal of Biogeography* **38**, 1821–1833.
- Adhikary S (2012) Seasonal and spatial variation of solar radiation in Nepal Himalayas. *Journal of Hydrology and Meteorology* **8**, 1–9.

- Aguirre-Gutiérrez J, Carvalheiro LG, Polce C, Van Loon EE, Raes N, Reemer M and Biesmeijer JC (2013) Fit-for-purpose: Species distribution model performance depends on evaluation criteria - Dutch Hoverflies as a case study. *PLoS ONE* **8**, e63708.
- Amissah L, Mohren GMJ, Bongers F, Hawthorne WD and Poorter L (2014) Rainfall and temperature affect tree species distribution in Ghana. *Journal of Tropical Ecology* **30**, 435–446.
- Angelo CL and Daehler CC (2015) Temperature is the major driver of distribution patterns for C 4 and C 3 BEP grasses along tropical elevation gradients in Hawai'i, and comparison with worldwide patterns. *Botany* **93**, 9–22.
- Araújo MB and New M (2007) Ensemble forecasting of species distributions. *Trends in Ecology and Evolution* **22**, 42–47.
- Austin M (2007) Species distribution models and ecological theory: A critical assessment and some possible new approaches. *Ecological Modelling* **200**, 1–19.
- Barry RG (1992) Mountain climatology and past and potential future climatic changes in mountain regions: A review. *Mountain Research and Development* **12**, 71–86.
- Bhattarai KR and Vetaas OR (2006) Can Rapoport's rule explain tree species richness along the Himalayan elevation gradient, Nepal? *Diversity and Distributions* **12**, 373–378.
- Bhattarai KR, Vetaas OR and Grytnes JA (2004) Fern species richness along a central Himalayan elevational gradient, Nepal. *Journal of Biogeography* **31**, 389–400.
- Blundo C, Malizia LR, Blake JG and Brown AD (2012) Tree species distribution in Andean forests: Influence of regional and local factors. *Journal of Tropical Ecology* **28**, 83–95.
- Boucher-Lalonde V, Morin A and Currie DJ (2012) How are tree species distributed in climatic space? A simple and general pattern. *Global Ecology and Biogeography* **21**, 1157–1166.
- Bradie J and Leung B (2016) A quantitative synthesis of the importance of variables used in MaxEnt species distribution models. *Journal of Biogeography* **44**, 1344–1361.
- Cha K-S and Kim T-H (2011) Evaluation of slope stability with topography and slope stability analysis method. *KSCE Journal of Civil Engineering* **15**, 251–256.
- Chen I-C, Hill JK, Ohlemüller R, Roy DB and Thomas CD (2011) Rapid range shifts of species associated with high levels of climate warming. *Science* **333**, 1024–1026.
- Chhetri PK, Gaddis KD and Cairns DM (2018) Predicting the suitable habitat of treeline species in the Nepalese Himalayas under climate change. *Mountain Research and Development* **38**, 153–163.
- Cianfrani C, Buri A, Vittoz P, Grand S, Zingg B, Verrecchia E and Guisan A (2019) Spatial modelling of soil water holding capacity improves models of plant distributions in mountain landscapes. *Plant Soil* **438**, 57–70.
- Colwell RK and Hurr GC (1994) Nonbiological gradients in species richness and a spurious Rapoport effect. *The American Naturalist* **144**, 570–595.
- Colwell RK and Lees DC (2000) The mid-domain effect: Geometric constraints on the geography of species richness. *Trends in Ecology and Evolution* **15**, 70–76.
- Deblauwe V, Droissart V, Bose R, Sonké B, Blach-Overgaard A, Svenning JC, Wieringa JJ, Ramesh BR, Stévant T and Couvreur TLP (2016) Remotely sensed temperature and precipitation data improve species distribution modelling in the tropics. *Global Ecology and Biogeography* **25**, 443–454.
- DFRS (2015) *State of Nepal's Forests*. Kathmandu: Department of Forest Research and Survey, 50 pp.
- Dormann CF, Elith J, Bacher S, Buchmann C, Carl G, Carr G, Garc JR, Gruber B, Lafourcade B, Leit PJ, Tamara M, McClean C, Osborne PE, Der BS, Skidmore AK, Zurell D and Lautenbach S (2013) Collinearity: a review of methods to deal with it and a simulation study evaluating their performance. *Ecography* **36**, 27–46.
- Dubuis A, Giovanettina S, Pellissier L, Pottier J, Vittoz P and Guisan A (2013) Improving the prediction of plant species distribution and community composition by adding edaphic to topo-climatic variables. *Journal of Vegetation Science* **24**, 593–606.
- Elith J, Graham CH, Anderson RP, Dudík M, Ferrier S, Guisan A, Hijmans RJ, Huettmann F, Leathwick JR, Lehmann A, Li J, Lohmann LG, Loiselle BA, Manion G, Moritz C, Nakamura M, Nakazawa Y, Overton JM, Peterson AT, Phillips SJ, Richardson K, Scachetti-Pereira R, Schapire RE, Soberón J, Williams S, Wisz MS and Zimmermann NE (2006) Novel methods improve prediction of species' distributions from occurrence data. *Ecography* **29**, 129–151.
- Elith J, Phillips SJ, Hastie T, Dudík M, Chee YE and Yates CJ (2011) A statistical explanation of MaxEnt for ecologists. *Diversity and Distributions* **17**, 43–57.
- FAO (2015) *Understanding Mountain Soils: A contribution from mountain areas to the International Year of Soils 2015*. Rome: Food and Agriculture Organization of the United Nations, 169 pp.
- Feng J, Hu X, Wang J and Wang Y (2016) Support for the elevational Rapoport's rule among seed plants in Nepal depends on biogeographical affinities and boundary effects. *Ecology and Evolution* **6**, 7246–7252.
- Fick SE and Hijmans RJ (2017) WorldClim 2: new 1-km spatial resolution climate surfaces for global land areas. *International Journal of Climatology* **37**, 4302–4315.
- Fraser-Jenkins CR and Kandel DR (2019) *Ferns and Fern-Allies of Nepal*. Kathmandu, Nepal: Department of Plant Resources, 446 pp.
- Fraser-Jenkins CR, Kandel DR and Pariyar S (2015) *Ferns and Fern-Allies of Nepal*. Kathmandu, Nepal: National Herbarium and Plant Laboratories, 508 pp.
- Fyllas NM, Bentley LP, Shenkin A, Asner GP, Atkin OK, Diaz S, Enquist BJ, Farfan-Rios W, Gloor E, Guerrieri R, Huasco WH, Ishida Y, Martin RE, Meir P, Phillips O, Salinas N, Silman M, Weerasinghe LK, Zaragoza-Castells J and Malhi Y (2017) Solar radiation and functional traits explain the decline of forest primary productivity along a tropical elevation gradient. *Ecology Letters* **20**, 730–740.
- Gaire NP, Koirala M, Bhuju DR and Borgaonkar HP (2014) Treeline dynamics with climate change at the central Nepal Himalaya. *Climate of the Past* **10**, 1277–1290.
- Giovanelli JGR, De Siqueira MF, Haddad CFB and Alexandrino J (2010) Modeling a spatially restricted distribution in the Neotropics: How the size of calibration area affects the performance of five presence-only methods. *Ecological Modelling* **221**, 215–224.
- Godsoe W, Franklin J and Blanchet FG (2017) Effects of biotic interactions on modeled species' distribution can be masked by environmental gradients. *Ecology and Evolution* **7**, 654–664.
- Guisan A, Theurillat J-P and Kienast F (1998) Predicting the potential distribution of plant species in an alpine environment. *Journal of Vegetation Science* **9**, 65–74.
- Hao T, Elith J, Lahoz-Monfort J and Guillera-Arroita G (2020) Testing whether ensemble modelling is advantageous for maximising predictive performance of species distribution models. *Ecography* **43**, 549–558.
- Hemp A (2006) Continuum or zonation? Altitudinal gradients in the forest vegetation of Mt. Kilimanjaro. *Plant Ecology* **184**, 27–42.
- Hengl T, De Jesus JM, Heuvelink GBM, Gonzalez MR, Kilibarda M, Blagotić A, Shangguan W, Wright MN, Geng X, Bauer-Marschallinger B, Guevara MA, Vargas R, MacMillan RA, Batjes NH, Leenaars JGB, Ribeiro E, Wheeler I, Mantel S and Kempen B (2017) SoilGrids250m: Global gridded soil information based on machine learning. *PLoS ONE* **12**, e0169748.
- Hijmans RJ, Phillips S, Leathwick J and Elith J (2017) dismo: Species Distribution Modeling. R package version 1.1-4. <https://cran.r-project.org/web/packages/dismo/index.html>.
- HMGN/MFSC (2002) *Nepal Biodiversity Strategy*. Kathmandu: HMG Nepal/Ministry of Forests and Soil Conservation, 170 pp.
- <http://www.efloras.org/> (2019).
- Huggett RJ (2004) *Fundamentals of Biogeography (Second Ed)*. London and New York: Routledge, 439 pp.
- IPCC (2013) *Climate Change 2013: The Physical Science Basis. Contribution of Working Group I to the Fifth Assessment Report of the Intergovernmental Panel on Climate Change*. (Stocker TF, Qin D, Plattner G-K, Tignor MMB, Allen SK, Boschung J, Nauels A, Xia Y, Bex V and Midgley PM, eds.). Cambridge, United Kingdom and New York, NY, USA: Cambridge University Press, 1535 pp.
- IPCC (2014) *Climate Change 2014: Impacts, Adaptation, and Vulnerability. Part A: Global and Sectoral Aspects. Contribution of Working Group II to*

- the Fifth Assessment Report of the Intergovernmental Panel on Climate Change. (Field CB, Barros VR, Dokken DJ, Mach KJ, Mastrandrea MD, Bilir TE, Chatterjee M, Ebi KL, Estrada YO, Genova RC, Girma B, Kissel ES, Levy AN, MacCracken S, Mastrandrea PR and White LL, eds.). Cambridge, United Kingdom and New York, NY, USA: Cambridge University Press, 1132 pp.
- Jacken JK** (1994) *Manual of Afforestation in Nepal (Second Edi)*. Kathmandu, Nepal: Forest Research and Survey Centre, 508 pp.
- Kansakar SR, Hannah DM, Gerrard J and Rees G** (2004) Spatial pattern in the precipitation regime of Nepal. *International Journal of Climatology* **24**, 1645–1659.
- Körner C** (2007) The use of 'altitude' in ecological research. *Trends in Ecology and Evolution* **22**, 569–574.
- Lee C-B, Chun J-H, Song H-K and Cho H-J** (2013) Altitudinal patterns of plant species richness on the Baekdudaegan Mountains, South Korea: mid-domain effect, area, climate, and Rapoport's rule. *Ecological Research* **28**, 67–79.
- Lillesø J-PB, Shrestha TB, Dhakal LP, Nayaju RP and Shrestha R** (2005) The map of potential vegetation of Nepal - a forestry/agro-ecological/biodiversity classification system. Forest & Landscape Denmark, 85 pp.
- Liu C, White M and Newell G** (2011) Measuring and comparing the accuracy of species distribution models with presence absence data. *Ecography* **34**, 232–243.
- MacArthur RH** (1972) *Geographical Ecology: Patterns in the Distribution of Species*. New York: Harper & Row, 269 pp.
- MacKenzie DI** (2005) Was it there? Dealing with imperfect detection for species presence/absence data. *Australian & New Zealand Journal of Statistics* **47**, 65–74.
- Maharjan SK, Poorter L, Holmgren M, Bongers F, Wieringa JJ and Hawthorne WD** (2011) Plant functional traits and the distribution of West African Rain Forest trees along the rainfall gradient. *Biotropica* **43**, 552–561.
- Malhi Y, Aragao LEOC, Galbraith D, Huntingford C, Fisher R, Zelazowski P, Sitch S, McSweeney C and Meir P** (2009) Exploring the likelihood and mechanism of a climate-change-induced dieback of the Amazon rainforest. *Proceedings of the National Academy of Sciences* **106**, 20610–20615.
- Merckx B, Steyaert M, Vanreusel A, Vincx M and Vanaverbeke J** (2011) Null models reveal preferential sampling, spatial autocorrelation and overfitting in habitat suitability modelling. *Ecological Modelling* **222**, 588–597.
- Merow C, Smith MJ and Silander JA** (2013) A practical guide to MaxEnt for modeling species' distributions: What it does, and why inputs and settings matter. *Ecography* **36**, 1058–1069.
- Mittermeier RA, Robles Gil P, Hoffmann M, Pilgrim J, Brooks T, Mittermeier CG, Lamoreux J and Da Fonseca GAB** (2004) *Hotspots revisited*. Mexico City: CEMEX, 390 pp.
- Mu W, Yu F, Li C, Xie Y, Tian J, Liu J and Zhao N** (2015) Effects of rainfall intensity and slope gradient on runoff and soil moisture content on different growing stages of spring maize. *Water* **7**, 2990–3008.
- Müller M, Schickhoff U, Scholten T, Drollinger S, Böhner J and Chaudhary RP** (2016a) How do soil properties affect alpine treelines? General principles in a global perspective and novel findings from Rolwaling Himal, Nepal. *Progress in Physical Geography* **40**, 135–160.
- Müller M, Schwab N, Schickhoff U, Böhner J and Scholten T** (2016b) Soil temperature and soil moisture patterns in a Himalayan alpine treeline ecotone. *Arctic, Antarctic, and Alpine Research* **48**, 501–521.
- Paudyal KP and Haq N** (2008) Variation of pomelo (*Citrus grandis* (L.) Osbeck) in Nepal and participatory selection of strains for further improvement. *Agroforestry Systems* **72**, 195–204.
- Pearson RG, Raxworthy CJ, Nakamura M and Peterson AT** (2007) Predicting species distributions from small numbers of occurrence records: a test case using cryptic geckos in Madagascar. *Journal of Biogeography* **34**, 102–117.
- Peterson AT, Soberón J, Pearson RG, Anderson RP, Martínez-Meyer E, Nakamura M and Araújo MB** (2011) *Ecological niches and geographic distributions*. New Jersey: Princeton University Press, 328 pp.
- Phillips SJ** (2010) A brief tutorial on Maxent. *Lessons in Conservation* **3**, 108–135.
- Phillips SJ, Anderson RP and Schapire RE** (2006) Maximum entropy modeling of species geographic distributions. *Ecological Modelling* **190**, 231–259.
- Phillips SJ, Dudík M and Schapire RE** (2004) *A maximum entropy approach to species distribution modeling*. In *Proceedings of the Twenty-First International Conference on Machine Learning*. pp. 655–662.
- Pintor AFV, Schwarzkopf L and Krockenberger AK** (2015) Rapoport's Rule: Do climatic variability gradients shape range extent? *Ecological Monographs* **85**, 643–659.
- R Core Team** (2017) *R: A Language and Environment for Statistical Computing (R-3.4.3)*. Vienna: R Foundation for Statistical Computing. <https://www.r-project.org/>.
- Raes N** (2012) Partial versus full species distribution models. *Natureza e Conservacao* **10**, 127–138.
- Raes N and Aguirre-Gutiérrez J** (2018) *A modeling framework to estimate and project species distributions in space and time*. In Hoorn C, Perrigo A and Antonelli A (eds.), *Mountains, Climate and Biodiversity*. John Wiley & Sons Ltd., pp. 309–320.
- Raes N and Ter Steege H** (2007) A null-model for significance testing of presence-only species distribution models. *Ecography* **30**, 727–736.
- Rajbhandari KR and Rai SK** (2019) *A Handbook of The Flowering Plants of Nepal*. Kathmandu, Nepal: Department of Plant Resources, 527 pp.
- Rasmann S, Alvarez N and Pellissier L** (2014) The altitudinal niche-breadth hypothesis in insect-plant interactions. *Annual Plant Reviews* **47**, 339–360.
- Schellenberger Costa D, Gerschlaue F, Kiese R, Fischer M, Kleyer M and Hemp A** (2018) Plant niche breadths along environmental gradients and their relationship to plant functional traits. *Diversity and Distributions* **24**, 1869–1882.
- Schiatti J, Emilio T, Rennó CD, Drucker DP, Costa FRC, Nogueira A, Baccaro FB, Figueiredo F, Castilho C V., Kinupp V, Guillaumet J-L, Garcia ARM, Lima AP and Magnusson WE** (2014) Vertical distance from drainage drives floristic composition changes in an Amazonian rainforest. *Plant Ecology & Diversity* **7**, 241–253.
- Schmitt CB, Senbeta F, Woldemariam T, Rudner M and Denich M** (2013) Importance of regional climates for plant species distribution patterns in moist Afrotropical forest. *Journal of Vegetation Science* **24**, 553–568.
- Shrestha KK, Bhattarai S and Bhandari P** (2018) *Handbook of Flowering Plants of Nepal (Volume 1. Gymnosperms and Angiosperms: Cycadaceae - Betulaceae)*. Jodhpur, India: Scientific Publishers, 648 pp.
- Slot M and Winter K** (2017) Photosynthetic acclimation to warming in tropical forest tree seedlings. *Journal of Experimental Botany* **68**, 2275–2284.
- Soberón J and Peterson AT** (2005) Interpretation of models of fundamental ecological niches and species' distributional areas. *Biodiversity Informatics* **2**, 1–10.
- Sterck F, Markesteijn L, Toledo M, Schieving F and Poorter L** (2014) Sapling performance along resource gradients drives tree species distributions within and across tropical forests. *Ecology* **95**, 2514–2525.
- Stevens GC** (1992) The elevational gradient in altitudinal range: An extension of Rapoport's latitudinal rule to altitude. *The American Naturalist* **140**, 893–911.
- Subedi SC, Bhattarai KR, Perez TM and Sah JP** (2020) Gymnosperm species richness patterns along the elevational gradient and its comparison with other plant taxonomic groups in the Himalayas. *Frontiers of Biogeography* **12**, 1–14.
- Suwal MK, Shrestha KB, Guragain L, Shakya R, Shrestha K, Bhujui DR and Vetaas OR** (2016) Land-use change under a warming climate facilitated upslope expansion of Himalayan silver fir (*Abies spectabilis* (D. Don) Spach). *Plant Ecology* **217**, 993–1002.
- TISC** (2002) *Forest and Vegetation Types of Nepal - TISC Document Series No. 104*. Kathmandu: Tree Improvement and Silviculture Component/Natural Resource Management Sector Assistance Programme/Department of Forest/Ministry of Forests and Soil Conservation/HMG Nepal, 180 pp.
- Title PO and Bemmels JB** (2018) ENVIREM: an expanded set of bioclimatic and topographic variables increases flexibility and improves performance of ecological niche modeling. *Ecography* **41**, 291–307.

- Toledo M, Peña-Claros M, Bongers F, Alarcón A, Balcázar J, Chuvina J, Leño C, Licona JC and Poorter L** (2012) Distribution patterns of tropical woody species in response to climatic and edaphic gradients. *Journal of Ecology* **100**, 253–263.
- Van Proosdij ASJ, Sosef MSM, Wieringa JJ and Raes N** (2016) Minimum required number of specimen records to develop accurate species distribution models. *Ecography* **39**, 542–552.
- Vetaas OR and Grytnes JA** (2002) Distribution of vascular plant species richness and endemic richness along the Himalayan elevation gradient in Nepal. *Global Ecology and Biogeography* **11**, 291–301.
- Vincent AG, Sundqvist MK, Wardle DA and Giesler R** (2014) Bioavailable soil Phosphorus decreases with increasing elevation in a Subarctic Tundra Landscape. *PLoS ONE* **9**, e92942.
- Walthert L and Meier ES** (2017) Tree species distribution in temperate forests is more influenced by soil than by climate. *Ecology and Evolution* **7**, 9473–9484.
- Whittaker RH** (1967) Gradient analysis of vegetation. *Biological reviews of the Cambridge Philosophical Society* **42**, 207–264.
- Wilson AM and Jetz W** (2016) Remotely sensed high-resolution global cloud dynamics for predicting ecosystem and biodiversity distributions. *PLoS Biology* **14**, 1–20.
- Wisz MS, Hijmans RJ, Li J, Peterson AT, Graham CH and Guisan A** (2008) Effects of sample size on the performance of species distribution models. *Diversity and Distributions* **14**, 763–773.
- Wisz MS, Pottier J, Kissling WD, Pellissier L, Lenoir J, Damgaard CF, Dormann CF, Forchhammer MC, Grytnes JA, Guisan A, Heikkinen RK, Høye TT, Kühn I, Luoto M, Maiorano L, Nilsson MC, Normand S, Öckinger E, Schmidt NM, Termansen M, Timmermann A, Wardle DA, Aastrup P and Svenning JC** (2013) The role of biotic interactions in shaping distributions and realised assemblages of species: Implications for species distribution modelling. *Biological Reviews* **88**, 15–30.
- Zizka A and Antonelli A** (2015) speciesgeocodeR: An R package for linking species occurrences, user-defined regions and phylogenetic trees for biogeography, ecology and evolution. *bioRxiv - The Preprint Server for Biology*, <https://doi.org/10.1101/032755>.