

# Demographic changes in Pleistocene sea turtles were driven by past sea level fluctuations affecting feeding habitat availability

Jurjan P. van der Zee<sup>1,2</sup>  | Marjolijn J.A. Christianen<sup>1,3</sup> | Martine Bérubé<sup>1,4</sup> | Mabel Nava<sup>5</sup> | Sietske van der Wal<sup>6</sup> | Jessica Berkel<sup>7</sup> | Tazio Bervoets<sup>8,9</sup> | Melanie Meijer zu Schlochtern<sup>8</sup> | Leontine E. Becking<sup>2,10</sup> | Per J. Palsbøll<sup>1,4</sup>

<sup>1</sup>Marine Evolution and Conservation, Groningen Institute for Evolutionary Life Sciences, University of Groningen, AG Groningen, the Netherlands

<sup>2</sup>Wageningen Marine Research, Den Helder, the Netherlands

<sup>3</sup>Aquatic Ecology and Water Quality Management Group, Wageningen University & Research, Wageningen, the Netherlands

<sup>4</sup>Center for Coastal Studies, Provincetown, Massachusetts, USA

<sup>5</sup>Sea Turtle Conservation Bonaire, Kralendijk, Bonaire, Caribbean Netherlands

<sup>6</sup>Turtugaruba Foundation, Oranjestad, Aruba

<sup>7</sup>Sint Eustatius National Parks Foundation, Sint Eustatius, Caribbean Netherlands

<sup>8</sup>Sint Maarten Nature Foundation, Cole Bay, Sint Maarten

<sup>9</sup>Dutch Caribbean Nature Alliance, Kralendijk, Bonaire, Caribbean Netherlands

<sup>10</sup>Marine Animal Ecology Group, Wageningen University & Research, Wageningen, the Netherlands

## Correspondence

Jurjan P. van der Zee, Marine Evolution and Conservation, Groningen Institute for Evolutionary Life Sciences, University of Groningen, Nijenborg 7 9747 AG Groningen, the Netherlands.  
Email: jurjanvanderzee@gmail.com

## Funding information

Nederlandse Organisatie voor Wetenschappelijk Onderzoek, Grant/Award Number: 016.Veni.181.002, 858.14.090 and 863.14.020; Ministerie van Economische Zaken en Klimaat, Grant/Award Number: BO-11-019.02-046

## Abstract

Pleistocene environmental changes are generally assumed to have dramatically affected species' demography via changes in habitat availability, but this is challenging to investigate due to our limited knowledge of how Pleistocene ecosystems changed through time. Here, we tracked changes in shallow marine habitat availability resulting from Pleistocene sea level fluctuations throughout the last glacial cycle (120–14 thousand years ago; kya) and assessed correlations with past changes in genetic diversity inferred from genome-wide SNPs, obtained via ddRAD sequencing, in Caribbean hawksbill turtles, which feed in coral reefs commonly found in shallow tropical waters. We found sea level regression resulted in an average 75% reduction in shallow marine habitat availability during the last glacial cycle. Changes in shallow marine habitat availability correlated strongly with past changes in hawksbill turtle genetic diversity, which gradually declined to ~1/4th of present-day levels during the Last Glacial Maximum (LGM; 26–19 kya). Shallow marine habitat availability and genetic diversity rapidly increased after the LGM, signifying a population expansion in response to warming environmental conditions. Our results suggest a positive correlation between Pleistocene environmental changes, habitat availability and species' demography, and that demographic changes in hawksbill turtles were potentially driven by

Leontine E. Becking and Per J. Palsbøll Shared senior authorship

This is an open access article under the terms of the Creative Commons Attribution License, which permits use, distribution and reproduction in any medium, provided the original work is properly cited.

© 2021 The Authors. *Molecular Ecology* published by John Wiley & Sons Ltd.

feeding habitat availability. However, we also identified challenges associated with disentangling the potential environmental drivers of past demographic changes, which highlights the need for integrative approaches. Our conclusions underline the role of habitat availability on species' demography and biodiversity, and that the consequences of ongoing habitat loss should not be underestimated.

#### KEYWORDS

ddRAD sequencing, demographic change, habitat availability, Pleistocene sea turtles, sea level change

## 1 | INTRODUCTION

Environmental changes driven by Pleistocene climate changes were a major driver of past demographic changes (Hewitt, 2000). Global cooling resulted in the formation of continental ice sheets across the northern hemisphere, equator-ward shifts in temperate climate zones and regressed sea levels during glacial periods (Bintanja et al., 2005). The opposite occurred during interglacial periods: continental ice sheets receded, temperate climate zones shifted towards the poles and sea levels increased. The environmental changes associated with the Pleistocene glacial cycles severely altered the range and distribution of many species; populations recurrently experienced phases of contraction and isolation during glacial events, followed by population expansion and possible secondary contact or admixture between previously isolated populations during interglacial periods (Hewitt, 2000). Consequentially, many natural populations underwent dramatic changes in abundance or became extinct as a result of the environmental changes driven by Pleistocene climate oscillations. Understanding the ecological drivers that underlie the demographic changes in response to past climate change may provide valuable insights in how species can respond to current climate change, akin to a natural experiment on an evolutionary timescale.

Changes in habitat availability have often been invoked as a causal mechanism for the demographic changes associated with Pleistocene climate changes (Dalén et al., 2007; Foote et al., 2013; Hewitt, 2000). For example, declines in Beringian steppe bison populations were attributed to reduced steppe-tundra habitat and expanding boreal forests, which restricted dispersal and provided poor feeding habitat (Shapiro, 2004). Changes in habitat availability may even drive extinction if species are unable to track these changes. European Arctic fox populations probably became extinct as a result of a failure of tracking changes in habitat after the Last Glacial Maximum (LGM; Dalén et al., 2007). Similar observations have been made in the marine environment, such as signatures of genetic bottlenecks in fishes associated with shallow reef habitats lost due to sea level regression, but not in species inhabiting deeper reef fringes (Fauvelot et al., 2003). These observations result in the general assumption that large-scale changes in habitat availability regulated species' abundance, an assertion that can be assessed by tracking past changes in abundance and habitat availability. However, our

limited knowledge of Pleistocene ecosystem changes restricts our ability to assess the postulated association between habitat and abundance over extended timescales.

Past sea level fluctuations are well-mapped (Bintanja et al., 2005) and present an opportunity for assessing the relationship between past abundance and changes in habitat availability driven by Pleistocene climate change. Sea level changes had major impacts on coastal ecosystems that were linked to the availability of shallow marine habitat (Ludt & Rocha, 2015). Consequentially, past sea level changes provide a unique opportunity to assess the relationship between Pleistocene climate changes, habitat availability and past demographic changes. Assessing this relationship can also help provide insights in the long-term effects of contemporary habitat loss driven by current climate change and other anthropogenic disturbances.

Population genetic theory predicts a relatively straightforward relationship between abundance and genetic diversity in the absence of spatial population substructure for populations at long-term equilibrium (Hudson et al., 1990). The parameter  $\theta = 4N_e\mu$ , where  $N_e$  is the effective population size (Wright, 1931) and  $\mu$  is the per-generation mutation rate, describes the amount of genetic diversity observed at diploid, autosomal loci (Watterson, 1975). The relationship between genetic diversity and abundance can be leveraged to estimate past demographic changes (e.g., Liu & Fu, 2015). Advances in high-throughput sequencing now enable generating thousands of single nucleotide polymorphism (SNP) markers at relatively low cost in non-model species (Ellegren, 2014), providing unprecedented resolution for studying species' demographic history. Inferred demographic changes can subsequently be linked to ecological changes driven by past climate change to disentangle the underlying processes.

Sea turtles represent an excellent species complex for studying the relationship between past sea level fluctuations, habitat availability and demographic changes because sea turtles typically depend on shallow marine habitat for feeding (Hendrickson, 1980). For example, green turtles (*Chelonia mydas*) are specialized herbivores that graze on seagrass meadows (Bjorndal, 1980) and hawksbill turtles (*Eretmochelys imbricata*) are spongivores associated with feeding in coral reefs (León & Bjorndal, 2002). Bottom-up regulation is believed to play an important role in regulating sea turtle population dynamics (Jackson, 1997), suggesting

changes in feeding habitat availability could lead to concurrent changes in abundance. As mentioned earlier, relating past changes in genetic diversity to abundance requires spatial substructure to be absent (Hudson et al., 1990; Watterson, 1975). Genetic differentiation estimated using nuclear markers is typically reduced due to a high degree of male-mediated gene flow common in sea turtles (Roberts et al., 2004). Changes in genetic diversity estimated from nuclear markers are therefore expected to be an appropriate proxy for changes in abundance in sea turtles. Furthermore, coastal ecosystems, such as seagrass meadows and coral reefs, are highly threatened by climate change and anthropogenic disturbances (Jackson et al., 2001; Waycott et al., 2009). The potential loss of key feeding habitat is of major concern to sea turtle conservation. Studying how sea turtle populations responded to past changes in feeding habitat availability can aid predicting the consequences of contemporary feeding habitat loss.

Here, we evaluated the role of past changes in habitat availability driven by Pleistocene climate changes as a mechanism driving demographic changes by assessing changes in shallow marine habitat availability (0–60 m deep) during the last 125 thousand years (kya) in the wider Caribbean. We evaluated the association between changes in shallow marine habitat availability and changes in genetic diversity of the hawksbill turtle inferred from genome-wide single nucleotide polymorphism (SNP) markers. The hawksbill turtle is a migratory tropical marine vertebrate closely associated with tropical coral reefs, where they fulfill a keystone role in structuring sponge communities in coral reefs in the Caribbean (León & Bjorndal, 2002). The majority of coral reefs are located in shallow (<40 m) tropical waters (Huston, 1985; Kleypas et al., 1999), suggesting that coral reef habitat availability was severely reduced during periods of lowered sea levels. The Caribbean represents an excellent study area, since shallow marine habitat was reduced to <10% of the present-day area during the LGM (Ludt & Rocha, 2015). However, we have no insights into how sea level changes affected shallow marine habitat availability during the entire last glacial cycle.

## 2 | MATERIALS AND METHODS

### 2.1 | Sample collection and DNA extraction

To obtain a representative sample of Caribbean-wide nuclear genetic diversity, we sampled individuals at different life stages and at multiple nesting beaches and feeding grounds in the northern and southern Caribbean (Table S1). Hatchling were sampled by excising a small piece of the flipper from stillborn individuals encountered during post-hatching nest excavations. Juveniles were hand-captured by scuba/snorkel-assisted free-divers. Adults were sampled post-nesting. A small sliver of skin tissue was excised from the dorsal neck epidermal area using a sterilized scalpel blade. Samples were preserved and stored in 6 M sodium chloride and with 25% dimethyl sulphoxide (Amos & Hoelzel, 1991). Total-cell DNA was extracted using the Genra Puragene Tissue Kit (Qiagen

Inc.) following the manufacturer's instructions and resuspended in 1x TE (10 mM Tris-HCl, 1mM EDTA, pH 8.0). The average size and quality of the extracted DNA was assessed by gel electrophoresis through a 0.7% agarose (AMRESCO Inc.) gel for 20 minutes at 175V and 500 mA. The DNA was stained with ethidium bromide and visualized under UV light. The quantity of DNA was estimated using a Qubit Fluorometer (Life Technologies) following the manufacturer's instructions. An aliquot of each DNA extraction was normalized with 1xTE to a final concentration at 20 ng/μl.

### 2.2 | Library preparation

A single next-generation sequencing library was prepared following the original ddRAD protocol (Peterson et al., 2012), though we included a modification based upon the quaddRAD protocol (Franchini et al., 2017). Genomic DNA was digested using *HindIII* and *mspl* restriction enzymes. Adapters were designed with overhangs compatible with our restriction enzymes and a random stretch (NNNN) to identify and bioinformatically remove PCR duplicates (Franchini et al., 2017). The ligated DNA with barcodes were pooled and was size-selected at a 300–400 bp range using a Pippin Prep (Sage Science Inc.). The fragments were then enriched and uniquely indexed using a Phusion polymerase kit (New England Biolabs). The final library was diluted to a concentration of 1.97 ng/μl in a volume of 20 μl. The library was sequenced on an Illumina HiSeq4000 as paired-end in high-throughput mode at Novogene Company Ltd. in Hong Kong.

### 2.3 | Cleaning, demultiplexing and read mapping

Raw sequence reads were demultiplexed and cleaned using `process_radtags` in STACKS version 1.47 (Catchen et al., 2013). Samples with fewer than 1.5 million reads were excluded. Paired-end reads were mapped to the green turtle reference genome (Wang et al., 2013) with `BOWTIE2` version 2.3.3.1 (Langmead et al., 2009) using “very-sensitive” and “end-to-end” alignment. The paired-end size restriction was set to the default settings. Discordant reads were aligned as unpaired reads.

### 2.4 | Population structure, inbreeding and kinship

SNPs were called from mapped reads using the marukilow model (Maruki & Lynch, 2017) as implemented in `gstacks` in STACKS version 2.2 (Catchen et al., 2013). All samples were treated as originating from the same population (“DC”; Dutch Caribbean). We only included SNPs genotyped in at least 80% of all samples (Paris et al., 2017). SNPs with a heterozygosity above 0.5 were excluded. SNPs within less than 10,000 base pairs (bp) distance from other SNPs were removed using `vcftools` version 0.1.16 (Danecek et al., 2011) to reduce physical linkage among SNPs. To assess the selective

neutrality of our data, we performed variant annotation and effect prediction of SNPs using *SNPEFF* version 4.3 t (Cingolani et al., 2012).

Because population structure can confound demographic inference (Chikhi et al., 2010), we assessed the presence of population genetic structuring among the samples using model-based clustering and multivariate approaches. We conducted model-based clustering with *FASTSTRUCTURE* version 1.0 (Raj et al., 2014) using a simple prior to identify the optimal number of clusters describing our data. Multivariate-based clustering and principal component analyses were conducted using the *adegenet* R package version 2.1.3 (Jombart, 2008; Jombart & Ahmed, 2011) in R version 4.0.4 (R Core Team, 2021). We estimated pairwise relatedness using the KING-robust method (Manichaikul et al., 2010) implemented in *SNPRELATE* version 1.16.0 (Zheng et al., 2012) in R version 4.0.4.

## 2.5 | Past demographic changes

Past demographic changes were inferred using genotype likelihoods, which has been shown to lead to more robust demographic inference (Warmuth & Ellegren, 2019). The folded site frequency spectrum (SFS) was estimated from genotype likelihoods (Nielsen et al., 2012) using *ANGSD* version 0.925 (Korneliussen et al., 2014). Genotype likelihoods were estimated from the mapped reads (minimum mapping quality of 10 and minimum read quality of 20) with *ANGSD* version 0.925 (Korneliussen et al., 2014) using the *SAMTOOLS* method. Given that we employed a probabilistic framework, i.e. using genotype likelihoods, we applied a less stringent filter where sites not present in at least 50% of individuals were excluded. The minimum depth per site was set to the default value. The folded SFS was used because the derived allele could not be reliably determined due to the evolutionary distance between the hawksbill-, and green turtle (i.e.  $t_{MRC A} \approx 55$  million years ago; Duchêne et al., 2012). Past changes in  $\theta$  were estimated from the folded SFS using the stairway plot method (Liu & Fu, 2015) assuming a mutation rate at  $7.9 \times 10^{-9}$  substitutions per site per generation estimated for crocodylians (Green et al., 2014) and a generation time at 35 years (Meylan & Donnelly, 1999). Because crocodylians probably have lower mutations rates than turtles (Green et al., 2014; Shaffer et al., 1997), we also investigated the effects of a higher mutation rate at  $1.2 \times 10^{-8}$  substitutions per site per generation (Kong et al., 2012) previously applied to demographic inferences in green turtles (Fitak & Johnsen, 2018).

## 2.6 | Past changes in shallow marine habitat availability

Modern (Sbrocco & Barber, 2013) and LGM (21 kya) bathymetry and sea surface temperature data (Braconnot et al., 2007; Sbrocco, 2014) was used to map Caribbean shallow marine habitat availability, defined as grid points with a depth between 0 and 60 m (Ludt & Rocha, 2015) and a minimum mean sea surface temperature of  $>20^{\circ}\text{C}$  based upon the thermal limits of hawksbill turtles (Davenport, 1997), at a

5 arc-minute resolution. We also estimated modern and LGM shallow marine habitat availability for the Southwest Atlantic ( $55^{\circ}\text{W}$ – $30^{\circ}\text{W}$ ;  $35^{\circ}\text{S}$ – $2^{\circ}\text{S}$ ) and East Atlantic regions ( $30^{\circ}\text{W}$ – $15^{\circ}\text{E}$ ;  $5^{\circ}\text{S}$ – $20^{\circ}\text{N}$ ), encompassing extant Brazilian (e.g., Proietti et al., 2014) and West African (e.g., Monzón-Argüello et al., 2011) hawksbill turtle breeding and feeding grounds. Past sea levels (Bintanja et al., 2005) were used to estimate past changes in shallow marine habitat availability between 125–0 kya by calculating the number of grid points in the Caribbean (Figure S1 for details) with a depth between 0 +  $S$  and 60 +  $S$  m, where  $S$  was the sea level anomaly. To estimate past changes in shallow marine habitat availability in the Caribbean, we assumed sea surface temperatures (SSTs) did not restrict feeding habitat availability because tropical SSTs were only marginally lower during the LGM (Herbert et al., 2010) and well above hawksbill turtle thermal limits (Davenport, 1997). The association between genetic diversity (measured as median  $\theta$ ) and past changes in shallow marine habitat availability (relative to the present), as well as mean global surface air temperature and sea level anomalies (Bintanja et al., 2005) was assessed via Pearson correlation using R version 4.0.4.

To account for the time-series nature of the data, we additionally performed a regression analysis using generalized least squares with the *nlme* R package (version 3.1–152; R version 4.0.4), where an autoregressive process of order 1 was used to model autocorrelation among residuals. We initially included shallow marine habitat availability, global surface air temperature and sea levels as predictors of past changes in genetic diversity, and subsequently explored simpler models by excluding predictors. The models were fitted by maximizing the restricted log-likelihood. Model performance was evaluated using the Akaike information criterion (AIC) and Bayesian information criterion (BIC).

## 3 | RESULTS

We generated genotyping by sequencing data for  $N = 55$  hawksbill turtles sampled at different life stages and at multiple nesting beaches and feeding grounds in the northern and southern Caribbean (Table S1). The mean number of reads per sample was approximately  $10.7 \times 10^6$  (range:  $1.0 \times 10^6$  and  $33.0 \times 10^6$ ). The mean alignment rate against a green turtle draft genome (Wang et al., 2013) was 89% (Table S1). A single sample with few reads ( $2.2 \times 10^5$ ) and an alignment rate at only 37.5% was excluded from further analysis. We additionally excluded another sample with missing genotypes at more than 50% of the identified SNPs (Figure S2). The remaining 53 samples were genotyped at a total of 25,732 loci. Thinning SNPs to ensure a minimum distance of 10,000 base pairs among SNPs resulted in a final data set comprising 14,861 SNPs genotyped at rates of 80% or above. The majority of SNPs (~98.6%) were associated with non-coding genomic regions (Table S2). Predicted functional impacts classified ~99.9% of the SNPs as either non-coding variants, variants of non-coding genes or showing no evidence of functional impacts (Table S2). A few SNPs were found in splice site regions, but were predicted to unlikely affect protein functionality (Table S2).

Model-based and multivariate-based clustering showed our data was best described by a single cluster (Table S3; Figure S3). A principal component analysis suggested no samples clustered according to geography (Figure 1a). Variation along the first principal component axis revealed a distinct cluster (Figure 1b) comprised of three hatchling samples (AR150002, AR150005 and AR150008; Figure S4). Variation along the second principal component axis additionally revealed a single outlier sample (BO160241; Figure 1a–b), which was a hatchling sampled in Bonaire (Figure S4; Table S1). Most of the relevant structure in the data appeared to be captured by the first two principal components (Figure S5; Jombart et al., 2009). Pairwise estimates of kinship coefficients ranged between 0.16 and 0.24 (Figure S6) for eight dyads, suggesting that our sample contained putative sibling-, and parent-offspring pairs (Weir et al., 2006). No other dyads were found in the data set. Randomly excluding one individual from dyads (and two from one triad) of putative related individuals, respectively, as well as the outlier sample BO160241 resulted in a single cluster comprised of  $N = 44$  samples (Figure 1c–d; Figure S7). A lack of structure was additionally suggested by a gradual decline in inertia (Figure S8; Jombart et al., 2009) and by model-based clustering (Table S3).

To account for a potential effect of population structure, demographic inference was performed on the reduced  $N = 44$  data set. Past changes in genetic diversity estimated from the folded site frequency spectrum (SFS; Figures S9–S10) revealed a decline in genetic diversity (Figure 2) during the last glacial period (120–14 kya) followed by an increase after the LGM (26–19 kya). Applying a lower mutation rate resulted in older time points (Figure 2a), whereas applying a higher mutation rate had the opposite effect (Figure 2b).

Analyses including putative related individuals resulted in more recent demographic changes (Figure S11). In addition, two decline and expansion cycles were observed for the higher mutation rate (Figure S11B), possibly an effect of population substructure due to inclusion of putative related individuals.

Relatively minor decreases in sea levels resulted in considerable declines in shallow marine habitat availability; a 25%, 50% and 75% reduction in shallow marine habitat availability was achieved at sea levels 9, 26 and 55 m lower than present-day levels, respectively (Figure 3a). Shallow marine habitat availability was estimated at 9.6% of present-day levels in the Caribbean during the LGM (Figure S12; Table S4). Caribbean mean annual sea surface temperatures were 2 to 3°C lower during the LGM, ranging between 24 and 26°C (Figure S12). Shallow marine habitat availability in the Southwest-, and East Atlantic regions was estimated at 15.7% and 6.8% during the LGM, respectively (Table S4). Southwest-, and East Atlantic LGM shallow marine habitat availability declined to 19.2% and 7.4%, respectively, when no minimum sea surface temperature of 20°C was assumed (Table S4). We estimated that the availability of Caribbean shallow marine habitat declined to <25% (relative to the present) during the early stage of the last glacial cycle (120–110 kya), increasing to 35%–40% (110–80 kya) followed by a decline to <10% (80–19 kya; Figure 3b). The mean availability of shallow marine habitat during the period 120–14 kya was 75% lower than present-day levels. Past changes in shallow marine habitat availability (Figure 3b) and sea levels (Figure 3E) correlated strongly (Table S5) with genetic diversity (Figure 3c). Global surface air temperatures (Figure 3d) showed a weaker correlation with genetic diversity (Table S5). The AIC, BIC and log-likelihoods consistently supported a simple model

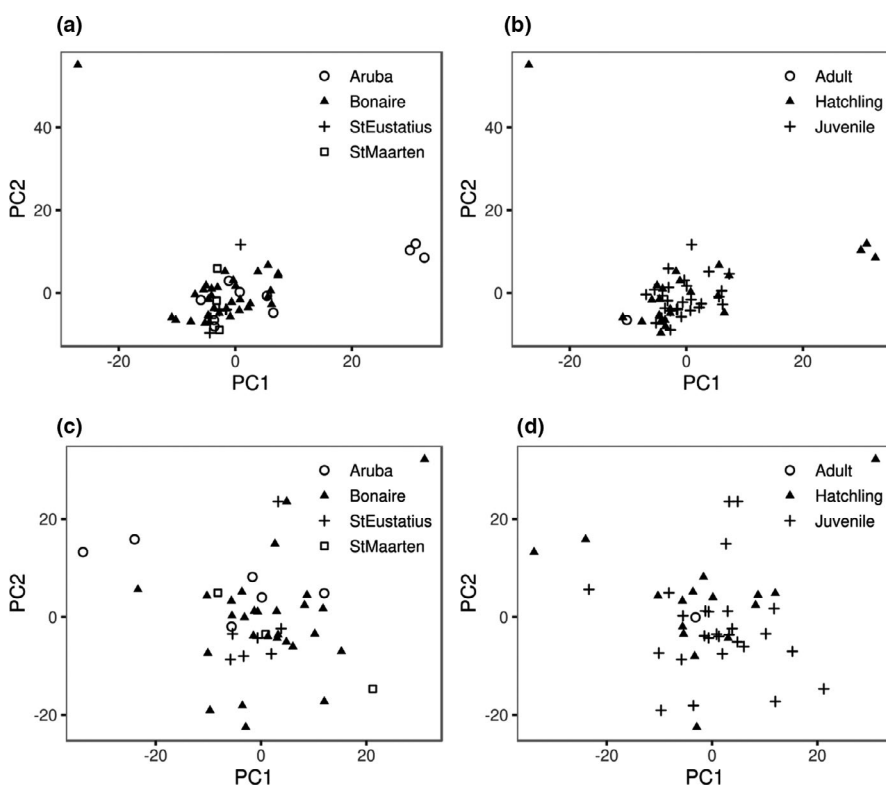
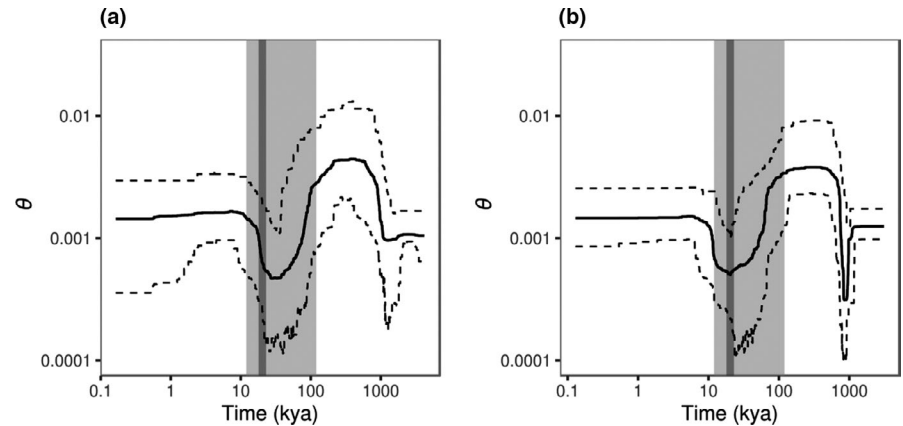


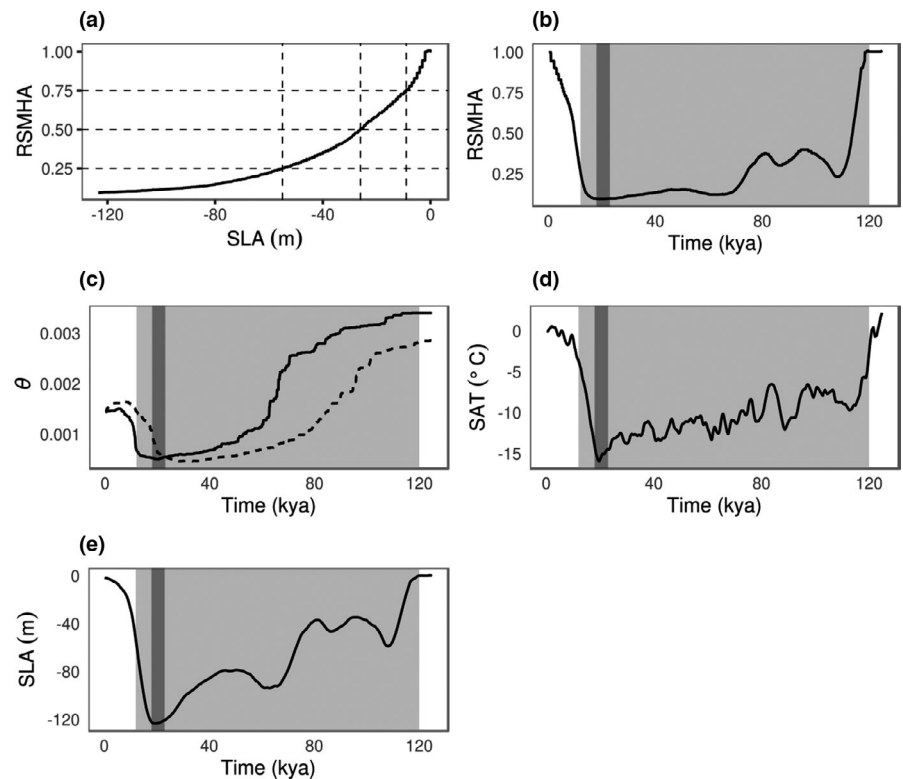
FIGURE 1 Plot of the first two principal components with individuals labelled by (a,c) sampling location (b,d) and sample type estimated from the (top panels; a–b) data including putative related individuals ( $N = 53$ ) and (bottom panels; c–d) data excluding putative related individuals ( $N = 44$ )



**FIGURE 2** Median (solid line) and 95% confidence interval (dashed lines) of genetic diversity ( $\theta$ ) through time (kya) estimated from the data excluding putative related individuals ( $N = 44$  individuals). Results are shown for (a)  $\mu = 7.9 \times 10^{-9}$  and (b)  $\mu = 1.2 \times 10^{-8}$  substitutions per site per generation. The approximate timing of the last glacial cycle (120–14 kya) is indicated in light grey shading. The LGM (26–19 kya) is indicated by a dark grey shaded bar



**FIGURE 3** Shallow marine habitat availability relative to the present (RSMHA) versus (a) the mean global sea level anomaly (SLA) in metres (m), and past trajectories of (b) RSMHA, (c) median genetic diversity ( $\theta$ ) for  $\mu = 7.9 \times 10^{-9}$  (dashed line) and  $\mu = 1.2 \times 10^{-8}$  (solid line) substitutions per site per generation, (d) the mean global surface air temperature anomaly (SAT) in degrees Celsius and (e) the SLA during the last 125 thousand years. The approximate timing of the last glacial cycle (120–14 kya) is indicated in light gray shading. The LGM (26–19 kya) is indicated by a dark grey shaded bar



that involved a single predictor variable in the regression analysis, but model rankings differed between mutation rates (Table S6). Past changes in genetic diversity were best predicted by either global surface air temperatures ( $\mu = 7.9 \times 10^{-9}$  substitutions per site per generation) or sea level changes ( $\mu = 1.2 \times 10^{-8}$  substitutions per site per generation), while the model including shallow marine habitat availability ranked third and second, respectively.

## 4 | DISCUSSION

In the present study, the role of past changes in habitat availability driven by Pleistocene climate changes as a potential driver of past demographic changes was investigated in Caribbean hawksbill turtles. We showed that Pleistocene sea level regression severely

reduced shallow marine habitat availability in the Caribbean during the last glacial cycle (120–14 kya) and detected concordant declines in the genetic diversity of hawksbill turtles. Shallow marine habitat availability and genetic diversity showed a synchronous and rapid increase to present-day levels after the LGM. However, sea level changes and surface air temperatures also showed strong correlations with Caribbean hawksbill genetic diversity, and we found no consistent support for a single driver of past demographic changes. In part, these findings can be attributed to non-independence among the investigated drivers, i.e., temperature is indirectly related to sea levels via the formation and melting of continental ice sheets, and in turn to shallow marine habitat availability. Temperature probably also influenced other abiotic or biotic processes, e.g., the distribution and quality of nesting habitat for sea turtles (Pike, 2013), sex ratios (Davenport, 1997) and sea turtle growth rates (Bjorndal et al., 2017),

factors that we did not consider. It did not appear, however, that sea surface temperatures limited the distribution of Caribbean hawksbill turtles. Tropical sea surface temperatures were on average 2 to 3°C lower during glacial maxima (Herbert et al., 2010) and ranged between 24 and 26°C in the Caribbean during the LGM. These sea surface temperatures fall within the range (19–30°C) experienced at present-day hawksbill turtle feeding grounds (Diez & van Dam, 2002; Gaos et al., 2012). Our findings thus potentially suggest that Pleistocene sea level changes affected the distribution and quantity of feeding habitat, and subsequently caused demographic changes in Caribbean hawksbill turtles. Similar observations have been made in marine vertebrates with different temperature tolerances (Foote et al., 2013; Morin et al., 2015). In the arctic-adapted bowhead whale (*Balaena mysticetus*), a post-LGM population expansion was concordant with a threefold increase in suitable habitat area following the retreat of permanent sea ice in the northern Atlantic (Foote et al., 2013). By contrast, killer whales (*Orcinus orca*) showed no evidence of past demographic changes, consistent with relatively minor declines (15%) in suitable habitat availability during the LGM concordant with their broad distribution between the tropics and the arctic regions (Morin et al., 2015). In other words, large-scale changes in the availability of feeding habitat could have affected the population dynamics of species dependent upon this habitat in a bottom-up manner, which has also been suggested for green turtles (Jackson, 1997). However, we cannot rule out potential influences from other environmental factors, and the impact of Pleistocene climate change on other aspects of the life history of hawksbill turtles warrants further exploration.

An additional complication is that changes in genetic diversity are typically expected to lag behind changes in abundance (Palsbøll et al., 2013), which has implications for evaluating the environmental drivers of past demographic changes. For example, simulated populations subjected to an instantaneous 95% bottleneck (i.e., a decline from  $\theta = 6.0$  to  $\theta = 0.3$ ) showed a 7% and 50% decrease in genetic diversity after 200 and 2000 generations, respectively (Palsbøll et al., 2013). In other words, a gradual decline in genetic diversity is expected after a rapid decline in abundance. As a result, a strong correlation of environmental drivers (e.g., sea levels or temperature) with past changes in genetic diversity does not necessarily imply a similar relationship with abundance, the parameter of interest. Integrative approaches (Hoban et al., 2019) are ultimately required to disentangle the abiotic and biotic drivers of past demographic changes, where past and present habitat availability is modeled explicitly using species distribution and environmental data (Alvarado-Serrano & Knowles, 2014). Such models could also serve as input for spatially-explicit coalescent-based assessments of genetic data (Ray et al., 2010), enabling model selection to further evaluate the factors underpinning the demographic response to Pleistocene climate changes.

The relationship between past environmental fluctuations and demographic change can potentially be further obscured by adaptive responses. For example, it is possible that hawksbill turtles adapted to reduced shallow marine habitat availability by shifting

towards feeding in deeper habitats, given that hawksbill turtles may dive up to 60 m (Blumenthal et al., 2009). A similar adaptive response was hypothesized for reef fishes (Fauvelot et al., 2003). Species associated with shallow reef habitats shifted to reef fringes, which resulted in a bottleneck but allowed populations to persist through sea level changes (Fauvelot et al., 2003). Declines in abundance are expected to be ameliorated if hawksbill turtles adapted to reduced shallow marine habitat availability by altering their feeding behavior, resulting in a less severe reduction in genetic diversity compared to shallow marine habitat availability, which could explain a >90% reduction in shallow marine habitat availability during the majority of the last glacial period (i.e., 70–19 kya) seemed to be associated with a 75% decline in genetic diversity, relative to present-day levels. The implicit assumption that an organism's niche stays the same over evolutionary timescales represents a limiting factor when evaluating potential drivers of past demographic change, but could potentially also be incorporated in an integrative simulation framework.

Previous studies suggested the occurrence of a population decline followed by an expansion in wider Caribbean hawksbill turtles around 900 kya (Reece et al., 2005) and 100–300 kya (Leroux et al., 2012) based upon mitochondrial DNA. The difference between these estimates was attributed to the analysis being performed on individual clades (Leroux et al., 2012) rather than on the pooled sample (Reece et al., 2005) by Leroux and colleagues (2012). By contrast, our results suggested a more recent population decline and expansion associated with the timing of the last glacial cycle, consistent with post-LGM population expansions reported for Indo-Pacific hawksbill turtles (Vargas et al., 2016) and green turtles (Reid et al., 2019). The differences between our findings and the studies of Reece et al. (2005) and Leroux et al. (2012) might be attributed to two causes. First, the large number of SNP markers employed in our study provides enhanced resolution compared to single-marker-based approaches, allowing for detailed reconstruction of past demographic histories (Edwards & Beerli, 2000). Second, natal philopatry drives strong geographic structuring of mitochondrial DNA variation in sea turtles (Bass et al., 1996; Bowen et al., 1992; Jensen et al., 2019; Leroux et al., 2012; Vargas et al., 2016) due to the maternal inheritance of mitochondria (Birky et al., 1989) and consequently probably confounds demographic inferences based upon mitochondrial markers (Heller et al., 2013; Hudson et al., 1990). By contrast, we applied nuclear markers and carefully assessed whether population substructure was present using both model-based and multivariate approaches, which suggested our sample of Caribbean hawksbill turtles behaved as a single panmictic population. These findings are consistent with the typically low levels of genetic differentiation estimated from nuclear markers due to elevated male-mediated gene flow in sea turtles (Roberts et al., 2004), highlighting the value of nuclear markers for studying the demographic history of sea turtles.

If intraoceanic gene flow (at nuclear loci) is sufficiently high, it is possible that the estimated past changes in genetic diversity reflect demographic changes across larger spatial scales. Atlantic hawksbill turtle nesting populations are located in the Caribbean (Bass et al., 1996; Bowen et al., 2007; Leroux et al., 2012), in the

Southwest Atlantic (i.e., Brazil, e.g., Proietti et al., 2014) and the East Atlantic (i.e., West and Central Africa, e.g., Monzón-Argüello et al., 2011). The Caribbean accounts for most nesting activity with ~3,000 adult females nesting annually, compared to ~470 in Brazil and <10 in West and Central Africa (Mortimer & Donnelly, 2008). Long-distance juvenile dispersal among the Caribbean, Southwest-, and East Atlantic regions has been demonstrated by tagging and genetic analysis (Bowen et al., 2007; Proietti et al., 2014; Santos et al., 2019). For example, a juvenile hawksbill turtle recorded in the US Virgin Islands contained a haplotype of the mitochondrial DNA control region (Bowen et al., 2007) only described in East Atlantic nesting populations (Monzón-Argüello et al., 2011). However, a preference for feeding closer to natal regions has been suggested for larger juveniles (Bowen et al., 2007) and migration distances are lower in adults ( $327 \pm 387$  km; mean  $\pm$  SD) compared to juveniles ( $2675 \pm 3212$  km; mean  $\pm$  SD; Hays & Scott, 2013). Post-nesting movements of adult Caribbean hawksbill turtles suggest they primarily migrate to feeding areas within the Caribbean, with maximum reported straight-line distances of up to 1600–1700 km (Becking et al., 2016; Van Dam et al., 2008) and females traveling farther than males (Van Dam et al., 2008). Furthermore, significant genetic divergence ( $F_{ST} = 0.033$ ) at microsatellite loci and model-based clustering suggested reduced gene flow between Caribbean and Southwest Atlantic green turtle nesting populations (Naro-Maciel et al., 2014). Gene flow among the Caribbean, Southwest-, and East Atlantic regions might therefore be limited in hawksbill turtles as well. However, occasional gene flow cannot be ruled out; a hatchling sampled in Bonaire (i.e., sample BO160241) appeared to be genetically distinct and might be explained by recent migrant ancestry. Without nuclear genomic data from other regions, however, the spatial scale of panmixia in Atlantic hawksbill turtles unfortunately remains unclear. However, declines in shallow marine habitat availability throughout the tropical Atlantic reflected those observed in the Caribbean, implying a similar demographic response.

The multivariate analysis of genetic variation suggested some heterogeneity within our sample, which could be partially attributed to the presence of related individuals within our sample. Including related individuals may inflate the number of intermediate variants in site frequency spectra, mimicking the effect of population substructure, which in turn can be misinterpreted as evidence of population bottlenecks (Heller et al., 2013; Mazet et al., 2016). However, excluding related individuals may also bias demographic inference (Waples & Anderson, 2017). Accordingly, we conducted demographic inference using different subsets of the data. The timing and magnitude of past changes in genetic diversity appeared consistent across subsets, suggesting there was no apparent bias due to the presence of related individuals. By contrast, past changes in genetic diversity estimated from the full data suggested Caribbean hawksbill turtles recovered slightly during the last glacial period. We cannot reject the possibility the observed partial population recovery is a spurious signal caused by within-sample substructure due to the presence of related individuals.

Estimated kinship coefficients suggested the observed pairs of related individuals represented putative sibling-, and parent-offspring pairs (Weir et al., 2006). Non-random sampling partially explains the presence of putative related individuals; our sample comprised hatchlings collected from the same nesting site within a single breeding season, as well as one adult. Adult female hawksbill turtles lay multiple nests per breeding season (Richardson et al., 1999), which given the small annual number of nesting females in the Dutch Caribbean (Dow & Eckert, 2011) can lead to a high probability of sampling nests from the same female. The detection of putative siblings and parent-offspring pairs in an apparent random sample drawn from various nesting beaches and feeding grounds suggests there are opportunities for relatedness-based inference of population connectivity and abundance (Bravington et al., 2016; Feutry et al., 2017), in sea turtles. For example, close-kin mark-recapture applied to the spartooth shark (*Glyphis glyphis*) demonstrated a high degree of juvenile fidelity to river systems (Feutry et al., 2017). In sea turtles, natal philopatry has been demonstrated in adult females and males (FitzSimmons et al., 1997), and to a lesser degree in juveniles (Naro-Maciel et al., 2017). In our study, two putative sibling-pairs were comprised of a hatchling and a juvenile. All four individuals were sampled in Bonaire in 2016, which suggested that both juveniles in the two hatchling-juvenile sibling pairs recruited to feeding areas located in the vicinity of natal nesting sites. These findings imply a direct observation of juvenile natal homing in hawksbill turtles and are consistent with a juvenile preference for feeding areas close to natal regions suggested for hawksbill turtles (Bowen et al., 2007) and other sea turtle species (Bowen et al., 2004).

The genetic diversity of hawksbill turtles prior to the last glacial period was higher than contemporary genetic diversity. Immigration may introduce novel genetic diversity into a population, which, over long time scales implies that local levels of genetic diversity converges towards “global” species genetic diversity (Hudson et al., 1990). The older parts of our estimation of genetic diversity might therefore be inflated by immigration (Beerli & Felsenstein, 1999; Hudson et al., 1990; Palsbøll et al., 2013). The cold Benguela Current is presumed to constitute a biogeographic barrier between the Atlantic and Indian Ocean for tropical marine species, though warm-water gyres of the Agulhas Current have been suggested to facilitate west-ward tropical dispersal (Hutchings et al., 2009; Rocha et al., 2005). Warmer conditions prevailed in the Benguela during the early Holocene warm period (Zhao et al., 2017), and sea surface isotherms and sea ice extent shifted northwards in the South Atlantic during the LGM (Gersonde et al., 2003). These changes in large-scale oceanographic conditions suggest that the permeability of the Benguela Current biogeographic barrier may fluctuate between glacial-, and interglacial periods. The previous interglacial period (130–116 kya) was warmer than the present. It is possible that the Benguela Current biogeographic barrier was sufficiently weakened during this period to allow a tropical migratory corridor to exist between the Atlantic and Indian Ocean, which has been suggested for green turtles (van der Zee et al., 2021). It is possible that this resulted in increased gene flow between Atlantic and Indo-Pacific



hawksbill turtles, and our elevated estimate of pre-glacial genetic diversity thus captures a signature of past gene flow.

Due to the uncertainty in mutation rates, we investigated the timing of events using both the slower mutation rate estimated from crocodylians (Green et al., 2014), and a faster mutation rate, similar to the human rate (Kong et al., 2012). The true mutation rate in sea turtles is probably more similar to crocodylians than humans (Green et al., 2014; Shaffer et al., 2013), suggesting the lower mutation rate was more appropriate. Nonetheless, our findings consistently suggested a population decline associated with the timing of the last glacial period.

Despite recent heavy human exploitation of hawksbill turtles and severe habitat degradation (McClenachan et al., 2006), we did not detect any recent decline in genetic diversity as expected during a bottleneck. However, very recent population declines are challenging to detect from genetic data unless a bottleneck was extremely severe, e.g. a reduction to <50 individuals (Peery et al., 2012). The estimate of the recent decline is ~80% decline during three generations (Meylan & Donnelly, 1999) and the current abundance has been estimated at 27,000 adult hawksbill turtles (Bjorndal & Jackson, 2003); a decline that is unlikely to be detectable in genetic data.

The relationship between Pleistocene climate changes, habitat availability and demographic change underlines that the consequences of contemporary habitat loss should not be underestimated. Tropical marine ecosystems have degraded considerably during the most recent decades as a result of human disturbances and climate change (Alvarez-Filip et al., 2009; Jackson et al., 2001; Waycott et al., 2009). While coral reefs persisted throughout the Pleistocene (Tager et al., 2010), current warming rates are unprecedented and have already impacted coral reefs considerably (Greenstein & Pandolfi, 2008). Certain coral reefs may become sponge reefs in the near-future (Bell et al., 2013), but it is unclear whether species that are becoming more dominant will be palatable to hawksbill turtles, or whether hawksbill turtles might adapt to ecological changes by targeting other resources in order to adapt to climate change (Bell, 2013).

## ACKNOWLEDGEMENTS

We thank all the volunteers of Sea Turtle Conservation Bonaire (STCB), Nature Foundation Sint Maarten (NFSXM), Turtugaruba and St. Eustatius National Parks Foundation (STENAPA) for help with collecting data, in particular Hans and Jannie Koning, Gielmon 'Funchi' Egbreghts and Twan Stoffers. We would like to thank the Centre for Information Technology of the University of Groningen for their support and for providing access to the Peregrine high-performance computing cluster. This work was supported through the project "Ecology and conservation of green and hawksbill turtles in the Dutch Caribbean" funded by the Netherlands Organization for Scientific Research (NWO-ALW: grant number 858.14.090). MN was supported through Sea Turtle Conservation Bonaire by funding of World Wildlife Fund Netherlands, Dutch Ministry of Economic Affairs, Dierenlot Foundation, and private donations to STCB. JB

was supported by the St. Eustatius National Parks Foundation. MJAC was supported by NWO-ALW (016. Veni.181.002). LEB was supported by NWO-ALW (863.14.020) and the Dutch Ministry of Economic Affairs BO-project (BO-11-019).

## CONFLICT OF INTEREST

The authors declare no conflict of interest.

## AUTHOR CONTRIBUTIONS

Jurjan P. van der Zee conceived the study and wrote the manuscript with input from all authors. Per J. Palsbøll supervised the study. Laboratory work was done by Martine Bérubé. Jurjan P. van der Zee conducted bioinformatic-, and data analyses. Mabel Nava, Leontine E. Becking, Marjolijn J.A. Christianen and Per J. Palsbøll obtained funding. Mabel Nava, Jessica Berkel, Sietske van der Wal, Melanie Meijer zu Schlochtern and Tadzio Bervoets provided tissue samples and logistic support in the field.

## DATA AVAILABILITY STATEMENT

Raw sequencing data has been deposited in Dryad (<https://doi.org/10.5061/dryad.7d7wm37wm>).

## ORCID

Jurjan P. van der Zee  <https://orcid.org/0000-0002-1449-2945>

## REFERENCES

- Alvarado-Serrano, D. F., & Knowles, L. L. (2014). Ecological niche models in phylogeographic studies: Applications, advances and precautions. *Molecular Ecology Resources*, 14(2), 233–248. <https://doi.org/10.1111/1755-0998.12184>
- Alvarez-Filip, L., Dulvy, N. K., Gill, J. A., Côté, I. M., & Watkinson, A. R. (2009). Flattening of Caribbean coral reefs: Region-wide declines in architectural complexity. *Proceedings of the Royal Society B*, 276(1669), 3019–3025. <https://doi.org/10.1098/rspb.2009.0339>
- Amos, B., & Hoelzel, A. R. (1991). Long-term preservation of whale skin for DNA analysis. Reports of the International Whaling Commission. *Special Issue*, 13, 99–103.
- Bass, A. L., Good, D. A., Bjorndal, K. A., Richardson, J. I., Hillis, Z. M., Horrocks, J. A., & Bowen, B. W. (1996). Testing models of female reproductive migratory behaviour and population structure in the Caribbean hawksbill turtle, *Eretmochelys imbricata*, with mtDNA sequences. *Molecular Ecology*, 5(3), 321–328. <https://doi.org/10.1046/j.1365-294X.1996.00073.x>
- Becking, L. E., Christianen, M. J. A., Nava, M. I., Miller, N., Willis, S., & Van Dam, R. P. (2016). Post-breeding migration routes of marine turtles from Bonaire and Klein Bonaire, Caribbean Netherlands. *Endangered Species Research*, 30, 117–124. <https://doi.org/10.3354/esr00733>
- Beerli, P., & Felsenstein, J. (1999). Maximum-likelihood estimation of migration rates and effective population numbers in two populations using a coalescent approach. *Genetics*, 152(2), 763–773. <https://doi.org/10.1093/genetics/152.2.763>
- Bell, I. (2013). Algivory in hawksbill turtles: *Eretmochelys imbricata* food selection within a foraging area on the Northern Great Barrier Reef. *Marine Ecology*, 34(1), 43–55. <https://doi.org/10.1111/j.1439-0485.2012.00522.x>
- Bell, J. J., Davy, S. K., Jones, T., Taylor, M. W., & Webster, N. S. (2013). Could some coral reefs become sponge reefs as our climate

- changes? *Global Change Biology*, 19(9), 2613–2624. <https://doi.org/10.1111/gcb.12212>
- Bintanja, R., van de Wal, R. S. W., & Oerlemans, J. (2005). Modelled atmospheric temperatures and global sea levels over the past million years. *Nature*, 437(7055), 125–128. <https://doi.org/10.1038/nature03975>
- Birky, C. W., Fuerst, P., & Maruyama, T. (1989). Organelle gene diversity under migration, mutation, and drift: Equilibrium expectations, approach to equilibrium, effects of heteroplasmic cells, and comparison to nuclear genes. *Genetics*, 121(3), 613–627. <https://doi.org/10.1093/genetics/121.3.613>
- Bjorndal, K. A. (1980). Nutrition and grazing behavior of the green turtle *Chelonia mydas*. *Marine Biology*, 56(2), 147–154. <https://doi.org/10.1007/BF00397131>
- Bjorndal, K. A., Bolten, A. B., Chaloupka, M., Saba, V. S., Bellini, C., Marcovaldi, M. A. G., Santos, A. J. B., Bortolon, L. F. W., Meylan, A. B., Meylan, P. A., Gray, J., Hardy, R., Brost, B., Bresette, M., Gorham, J. C., Connett, S., Crouchley, B. V. S., Dawson, M., Hayes, D., ... Kenyon, L. (2017). Ecological regime shift drives declining growth rates of sea turtles throughout the West Atlantic. *Global Change Biology*, 23(11), 4556–4568. <https://doi.org/10.1111/gcb.13712>
- Bjorndal, K., & Jackson, J. B. C. (2003). Roles of sea turtles in marine ecosystems: Reconstructing the past. *The Biology of Sea Turtles*, Vol. II. CRC Press.
- Blumenthal, J. M., Austin, T. J., Bothwell, J. B., Broderick, A. C., Ebanks-Petrie, G., Olynik, J. R., Orr, M. F., Solomon, J. L., Witt, M. J., & Godley, B. J. (2009). Diving behavior and movements of juvenile hawksbill turtles *Eretmochelys imbricata* on a Caribbean coral reef. *Coral Reefs*, 28(1), 55–65. <https://doi.org/10.1007/s00338-008-0416-1>
- Bowen, B. W., Bass, A. L., Chow, S., Bostrom, M., Bjorndal, K. A., Bolten, A. B., Okuyama, T., Bolker, B. M., Epperly, S., LaCasella, E., Shaver, D., Dodd, M., Hopkins-Murphy, S. R., Musick, J. A., Swingle, M., Rankin-Baransky, K., Teas, W., Witzell, W. N., & Dutton, P. H. (2004). Natal homing in juvenile loggerhead turtles (*Caretta caretta*). *Molecular Ecology*, 13(12), 3797–3808. <https://doi.org/10.1111/j.1365-294X.2004.02356.x>
- Bowen, B. W., Grant, W. S., Hillis-Starr, Z., Shaver, D. J., Bjorndal, K. A., Bolten, A. B., & Bass, A. L. (2007). Mixed-stock analysis reveals the migrations of juvenile hawksbill turtles (*Eretmochelys imbricata*) in the Caribbean Sea. *Molecular Ecology*, 16(1), 49–60. <https://doi.org/10.1111/j.1365-294X.2006.03096.x>
- Bowen, B. W., Meylan, A. B., Ross, J. P., Limpus, C. J., Balazs, G. H., & Avise, J. C. (1992). Global population structure and natural history of the green turtle (*Chelonia mydas*) in terms of matriarchal phylogeny. *Evolution*, 46(4), 865–881. <https://doi.org/10.2307/2409742>
- Braconnot, P., Otto-Bliesner, B., Harrison, S., Joussaume, S., Peterchmitt, J.-Y., Abe-Ouchi, A., Crucifix, M., Driesschaert, E., Fichefet, T. H., Hewitt, C. D., Kageyama, M., Kitoh, A., Laîné, A., Loutre, M.-F., Marti, O., Merkel, U., Ramstein, G., Valdes, P., Weber, S. L., ... Zhao, Y. (2007). Results of PMIP2 coupled simulations of the Mid-Holocene and Last Glacial Maximum - part 1: Experiments and large-scale features. *Climate of the past*, 3(2), 261–277. <https://doi.org/10.5194/cp-3-261-2007>
- Bravington, M. V., Grewe, P. M., & Davies, C. R. (2016). Absolute abundance of southern bluefin tuna estimated by close-kin mark-recapture. *Nature Communications*, 7, <https://doi.org/10.1038/ncomms13162>
- Catchen, J., Hohenlohe, P. A., Bassham, S., Amores, A., & Cresko, W. A. (2013). Stacks: An analysis tool set for population genomics. *Molecular Ecology*, 22(11), 3124–3140. <https://doi.org/10.1111/mec.12354>
- Chikhi, L., Sousa, V. C., Luisi, P., Goossens, B., & Beaumont, M. A. (2010). The confounding effects of population structure, genetic diversity and the sampling scheme on the detection and quantification of population size changes. *Genetics*, 186(3), 983–995. <https://doi.org/10.1534/genetics.110.118661>
- Cingolani, P., Platts, A., Wang, L., Coon, M., Nguyen, T., Wang, L., Land, S. J., Lu, X., & Ruden, D. M. (2012). A program for annotating and predicting the effects of single nucleotide polymorphisms, SnpEff: SNPs in the genome of *Drosophila melanogaster* strain w1118; iso-2; iso-3. *Fly*, 6(2), 80–92. <https://doi.org/10.4161/fly.19695>
- Dalén, L., Nyström, V., Valdiosera, C., Germonpre, M., Sablin, M., Turner, E., Angerbjörn, A., Arsuaga, J. L., & Götherström, A. (2007). Ancient DNA reveals lack of postglacial habitat tracking in the arctic fox. *Proceedings of the National Academy of Sciences*, 104(16), 6726–6729. <https://doi.org/10.1073/pnas.0701341104>
- Danecek, P., Auton, A., Abecasis, G., Albers, C. A., Banks, E., DePristo, M. A., Handsaker, R. E., Lunter, G., Marth, G. T., Sherry, S. T., McVean, G., & Durbin, R. (2011). The variant call format and VCFtools. *Bioinformatics*, 27(15), 2156–2158. <https://doi.org/10.1093/bioinformatics/btr330>
- Davenport, J. (1997). Temperature and the life-history strategies of sea turtles. *Journal of Thermal Biology*, 22(6), 479–488. [https://doi.org/10.1016/S0306-4565\(97\)00066-1](https://doi.org/10.1016/S0306-4565(97)00066-1)
- Diez, C., & van Dam, R. (2002). Habitat effect on hawksbill turtle growth rates on feeding grounds at Mona and Monito Islands, Puerto Rico. *Marine Ecology Progress Series*, 234, 301–309. <https://doi.org/10.3354/meps234301>
- Dow, W. E., & Eckert, K. L. (2011). Sea turtle nesting habitat in the Wider Caribbean Region. *Endangered Species Research*, 15(2), 129–141. <https://doi.org/10.3354/esr00375>
- Duchêne, S., Frey, A., Alfaro-Núñez, A., Dutton, P. H., Gilbert, T. P., & Morin, P. A. (2012). Marine turtle mitogenome phylogenetics and evolution. *Molecular Phylogenetics and Evolution*, 65(1), 241–250. <https://doi.org/10.1016/j.ympev.2012.06.010>
- Edwards, S., & Beerli, P. (2000). Perspective: Gene divergence, population divergence, and the variance in coalescence time in phylogeographic studies. *Evolution*, 54(6), 1839–1854. <https://doi.org/10.1111/j.0014-3820.2000.tb01231.x>
- Ellegren, H. (2014). Genome sequencing and population genomics in non-model organisms. *Trends in Ecology & Evolution*, 29(1), 51–63. <https://doi.org/10.1016/j.tree.2013.09.008>
- Fauvelot, C., Bernardi, G., & Planes, S. (2003). Reductions in the mitochondrial DNA diversity of coral reef fish provide evidence of population bottlenecks resulting from Holocene sea-level change. *Evolution*, 57(7), 1571–1583. <https://doi.org/10.1111/j.0014-3820.2003.tb00365.x>
- Feutry, P., Berry, O., Kyne, P. M., Pillans, R. D., Hillary, R. M., Grewe, P. M., Marthick, J. R., Johnson, G., Gunasekera, R. M., Bax, N. J., & Bravington, M. (2017). Inferring contemporary and historical genetic connectivity from juveniles. *Molecular Ecology*, 26(2), 444–456. <https://doi.org/10.1111/mec.13929>
- Fitak, R. R., & Johnsen, S. (2018). Green sea turtle (*Chelonia mydas*) population history indicates important demographic changes near the mid-Pleistocene transition. *Marine Biology*, 165(7), 110. <https://doi.org/10.1007/s00227-018-3366-3>
- FitzSimmons, N. N., Limpus, C. J., Norman, J. A., Goldizen, A. R., Miller, J. D., & Moritz, C. (1997). Philopatry of male marine turtles inferred from mitochondrial DNA markers. *Proceedings of the National Academy of Sciences*, 94(16), 8912–8917. <https://doi.org/10.1073/pnas.94.16.8912>
- Foote, A. D., Kaschner, K., Schultze, S. E., Garilao, C., Ho, S. Y. W., Post, K., Higham, T. F. G., Stokowska, C., van der Es, H., Embling, C. B., Gregersen, K., Johansson, F., Willerslev, E., & Gilbert, M. T. P. (2013). Ancient DNA reveals that bowhead whale lineages survived Late Pleistocene climate change and habitat shifts. *Nature Communications*, 4, 1677. <https://doi.org/10.1038/ncomms2714>
- Franchini, P., Monné Parera, D., Kautt, A. F., & Meyer, A. (2017). QuaddRAD: a new high-multiplexing and PCR duplicate removal ddRAD protocol produces novel evolutionary insights in a

- nonradiating cichlid lineage. *Molecular Ecology*, 26(10), 2783–2795. <https://doi.org/10.1111/mec.14077>
- Gaos, A. R., Lewison, R. R., Wallace, B. P., Yañez, I. L., Liles, M. J., Baquero, A., & Seminoff, J. A. (2012). Dive behaviour of adult hawksbills (*Eretmochelys imbricata*, Linnaeus 1766) in the eastern Pacific Ocean highlights shallow depth use by the species. *Journal of Experimental Marine Biology and Ecology*, 432–433, 171–178. <https://doi.org/10.1016/j.jembe.2012.07.006>
- Gersonde, R., Abelman, A., Brathauer, U., Becquey, S., Bianchi, C., Cortese, G., Grobe, H., Kuhn, G., Niebler, H.-S., Segl, M., Sieger, R., Zielinski, U., & Fütterer, D. K. (2003). Last glacial sea surface temperatures and sea-ice extent in the Southern Ocean (Atlantic-Indian sector): A multiproxy approach. *Paleoceanography*, 18(3), 6–16–18. <https://doi.org/10.1029/2002PA000809>
- Green, R. E., Braun, E. L., Armstrong, J., Earl, D., Nguyen, N., Hickey, G., Vandewege, M. W., St John, J. A., Capella-Gutiérrez, S., Castoe, T. A., Kern, C., Fujita, M. K., Opazo, J. C., Jurka, J., Kojima, K. K., Caballero, J., Hubley, R. M., Smit, A. F., Platt, R. N., ... Ray, D. A. (2014). Three crocodylian genomes reveal ancestral patterns of evolution among archosaurs. *Science*, 346(6215), 1254449. <https://doi.org/10.1126/science.1254449>
- Greenstein, B. J., & Pandolfi, J. M. (2008). Escaping the heat: range shifts of reef coral taxa in coastal Western Australia. *Global Change Biology*, 14(3), 513–528. <https://doi.org/10.1111/j.1365-2486.2007.01506.x>
- Hays, G. C., & Scott, R. (2013). Global patterns for upper ceilings on migration distance in sea turtles and comparisons with fish, birds and mammals. *Functional Ecology*, 27(3), 748–756. <https://doi.org/10.1111/1365-2435.12073>
- Heller, R., Chikhi, L., & Siegmund, H. R. (2013). The confounding effect of population structure on Bayesian skyline plot inferences of demographic history. *PLoS One*, 8(5), e62992. <https://doi.org/10.1371/journal.pone.0062992>
- Hendrickson, J. R. (1980). The ecological strategies of sea turtles. *Integrative and Comparative Biology*, 20(3), 597–608. <https://doi.org/10.1093/icb/20.3.597>
- Herbert, T. D., Peterson, L. C., Lawrence, K. T., & Liu, Z. (2010). Tropical ocean temperatures over the past 3.5 million years. *Science*, 328(5985), 1530–1534. <https://doi.org/10.1126/science.1185435>
- Hewitt, G. (2000). The genetic legacy of the Quaternary ice ages. *Nature*, 405(6789), 907–913. <https://doi.org/10.1038/35016000>
- Hoban, S., Dawson, A., Robinson, J. D., Smith, A. B., & Strand, A. E. (2019). Inference of biogeographic history by formally integrating distinct lines of evidence: Genetic, environmental niche and fossil. *Ecography*, 42, 1–21. <https://doi.org/10.1111/ecog.04327>
- Hudson, R. R., Futuyma, D., & Antonovics, J. (1990). Gene genealogies and the coalescent process. In *Oxford Surveys in Evolutionary Biology*
- Huston, M. A. (1985). Patterns of species diversity on coral reefs. *Annual Review of Ecology and Systematics*, 16(1), 149–177. <https://doi.org/10.1146/annurev.es.16.110185.001053>
- Hutchings, L., van der Lingen, C. D., Shannon, L. J., Crawford, R. J. M., Verheye, H. M. S., Bartholomae, C. H., van der Plas, A. K., Louw, D., Kreiner, A., Ostrowski, M., Fidel, Q., Barlow, R. G., Lamont, T., Coetzee, J., Shillington, F., Veitch, J., Currie, J. C., & Monteiro, P. M. S. (2009). The Benguela Current: An ecosystem of four components. *Progress in Oceanography*, 83(1–4), 15–32. <https://doi.org/10.1016/j.pocean.2009.07.046>
- Jackson, J. B. C. (1997). Reefs since Columbus. *Coral Reefs*, 16, S23–S32. <https://doi.org/10.1007/s003380050238>
- Jackson, J. B. C., Kirby, M. X., Berger, W. H., Bjorndal, K. A., Botsford, L. W., Bourque, B. J., Bradbury, R. H., Cooke, R., Erlandson, J., Estes, J. A., Hughes, T. P., Kidwell, S., Lange, C. B., Lenihan, H. S., Pandolfi, J. M., Peterson, C. H., Steneck, R. S., Tegner, M. J., & Warner, R. R. (2001). Historical overfishing and the recent collapse of coastal ecosystems. *Science*, 293(5530), 629–637. <https://doi.org/10.1126/science.1059199>
- Jensen, M. P., FitzSimmons, N. N., Bourjea, J., Hamabata, T., Reece, J., & Dutton, P. H. (2019). The evolutionary history and global phylogeography of the green turtle (*Chelonia mydas*). *Journal of Biogeography*, 46(5), 1–11. <https://doi.org/10.1111/jbi.13483>
- Jombart, T. (2008). adegenet: A R package for the multivariate analysis of genetic markers. *Bioinformatics*, 24(11), 1403–1405. <https://doi.org/10.1093/bioinformatics/btn129>
- Jombart, T., & Ahmed, I. (2011). adegenet 1.3-1: New tools for the analysis of genome-wide SNP data. *Bioinformatics*, 27(21), 3070–3071. <https://doi.org/10.1093/bioinformatics/btr521>
- Jombart, T., Pontier, D., & Dufour, A.-B. (2009). Genetic markers in the playground of multivariate analysis. *Heredity*, 102(4), 330–341. <https://doi.org/10.1038/hdy.2008.130>
- Kleypas, J. A., McManu, J. W., & Mene, L. A. B. (1999). Environmental limits to coral reef development: Where do we draw the line? *American Zoologist*, 39(1), 146–159. <https://doi.org/10.1093/icb/39.1.146>
- Kong, A., Frigge, M. L., Masson, G., Besenbacher, S., Sulem, P., Magnusson, G., Gudjonsson, S. A., Sigurdsson, A., Jonasdottir, A., Jonasdottir, A., Wong, W. S. W., Sigurdsson, G., Walters, G. B., Steinberg, S., Helgason, H., Thorleifsson, G., Gudbjartsson, D. F., Helgason, A., Magnusson, O. T., ... Stefansson, K. (2012). Rate of de novo mutations and the importance of father's age to disease risk. *Nature*, 488(7412), 471–475. <https://doi.org/10.1038/nature11396>
- Korneliusson, T. S., Albrechtsen, A., & Nielsen, R. (2014). ANGSD: Analysis of next generation sequencing data. *BMC Bioinformatics*, 15(1), 356. <https://doi.org/10.1186/s12859-014-0356-4>
- Langmead, B., Trapnell, C., Pop, M., & Salzberg, S. L. (2009). Ultrafast and memory-efficient alignment of short DNA sequences to the human genome. *Genome Biology*, 10(3), R25. <https://doi.org/10.1186/gb-2009-10-3-r25>
- León, Y. L., & Bjorndal, K. A. (2002). Selective feeding in the hawksbill turtle, an important predator in coral reef ecosystems. *Marine Ecology Progress Series*, 245, 249–258. <https://doi.org/10.3354/meps245249>
- Leroux, R. A., Dutton, P. H., Abreu-Grobois, F. A., Lagueux, C. J., Campbell, C. L., Delcroix, E., Chevalier, J., Horrocks, J. A., Hillis-Starr, Z., Troëng, S., Harrison, E., & Stapleton, S. (2012). Re-examination of population structure and phylogeography of hawksbill turtles in the wider Caribbean using longer mtDNA sequences. *Journal of Heredity*, 103(6), 806–820. <https://doi.org/10.1093/jhered/ess055>
- Liu, X., & Fu, Y.-X. (2015). Exploring population size changes using SNP frequency spectra. *Nature Genetics*, 47(5), 555–559. <https://doi.org/10.1038/ng.3254>
- Ludt, W. B., & Rocha, L. A. (2015). Shifting seas: The impacts of Pleistocene sea-level fluctuations on the evolution of tropical marine taxa. *Journal of Biogeography*, 42(1), 25–38. <https://doi.org/10.1111/jbi.12416>
- Manichaikul, A., Mychaleckyj, J. C., Rich, S. S., Daly, K., Sale, M., & Chen, W.-M. (2010). Robust relationship inference in genome-wide association studies. *Bioinformatics*, 26(22), 2867–2873. <https://doi.org/10.1093/bioinformatics/btq559>
- Maruki, T., & Lynch, M. (2017). Genotype calling from population-genomic sequencing data. *G3: Genes, Genomes, Genetics*, 7(5), 1393–1404. <https://doi.org/10.1534/g3.117.039008>
- Mazet, O., Rodríguez, W., Grusea, S., Boitard, S., & Chikhi, L. (2016). On the importance of being structured: Instantaneous coalescence rates and human evolution—lessons for ancestral population size inference? *Heredity*, 116(4), 362–371. <https://doi.org/10.1038/hdy.2015.104>
- McClenachan, L., Jackson, J. B., & Newman, M. J. (2006). Conservation implications of historic sea turtle nesting beach loss. *Frontiers in Ecology and the Environment*, 4(6), 290–296.
- Meylan, A. B., & Donnelly, M. (1999). Status justification for listing the hawksbill turtle (*Eretmochelys imbricata*) as critically endangered on the 1996 IUCN Red List of Threatened Animals. *Chelonian Conservation and Biology*, 3(2), 200–224.

- Monzón-Argüello, C., Loureiro, N. S., Delgado, C., Marco, A., Lopes, J. M., Gomes, M. G., & Abreu-Grobois, F. A. (2011). Príncipe island hawksbills: Genetic isolation of an eastern Atlantic stock. *Journal of Experimental Marine Biology and Ecology*, 407(2), 345–354. <https://doi.org/10.1016/j.jembe.2011.07.017>
- Morin, P. A., Parsons, K. M., Archer, F. I., Ávila-Arcos, M. C., Barrett-Lennard, L. G., Dalla Rosa, L., Duchêne, S., Durban, J. W., Ellis, G. M., Ferguson, S. H., Ford, J. K., Ford, M. J., Garilao, C., Gilbert, M. T. P., Kaschner, K., Matkin, C. O., Petersen, S. D., Robertson, K. M., Visser, I. N., ... Foote, A. D. (2015). Geographic and temporal dynamics of a global radiation and diversification in the killer whale. *Molecular Ecology*, 24(15), 3964–3979. <https://doi.org/10.1111/mec.13284>
- Mortimer, J. A., & Donnelly, M. (2008). *Eretmochelys imbricata*. In The IUCN Red List of Threatened Species 2008 (p. e.T8005A12881238). <https://doi.org/https://doi.org/10.2305/IUCN.UK.2008.RLTS.T8005A12881238.en>
- Naro-Maciel, E., Hart, K. M., Cruciata, R., & Putman, N. F. (2017). DNA and dispersal models highlight constrained connectivity in a migratory marine megavertebate. *Ecography*, 40(5), 586–597. <https://doi.org/10.1111/ecog.02056>
- Naro-Maciel, E., Reid, B. N., Alter, S. E., Amato, G., Bjørndal, K. A., Bolten, A. B., Martin, M., Nairn, C. J., Shamblyn, B., & Pineda-Catalan, O. (2014). From refugia to rookeries: Phylogeography of Atlantic green turtles. *Journal of Experimental Marine Biology and Ecology*, 461, 306–316. <https://doi.org/10.1016/j.jembe.2014.08.020>
- Nielsen, R., Korneliussen, T., Albrechtsen, A., Li, Y., & Wang, J. (2012). SNP calling, genotype calling, and sample allele frequency estimation from new-generation sequencing data. *PLoS One*, 7(7), e37558. <https://doi.org/10.1371/journal.pone.0037558>
- Palsbøll, P. J., Zachariah Peery, M., Olsen, M. T., Beissinger, S. R., & Bérubé, M. (2013). Inferring recent historic abundance from current genetic diversity. *Molecular Ecology*, 22(1), 22–40. <https://doi.org/10.1111/mec.12094>
- Paris, J. R., Stevens, J. R., & Catchen, J. M. (2017). Lost in parameter space: A road map for stacks. *Methods in Ecology and Evolution*, 8, 1360–1373. <https://doi.org/10.1111/2041-210X.12775>
- Peery, M. Z., Kirby, R., Reid, B. N., Stoelting, R., Doucet-Béer, E., Robinson, S., Vásquez-Carrillo, C., Pauli, J. N., & Palsbøll, P. J. (2012). Reliability of genetic bottleneck tests for detecting recent population declines. *Molecular Ecology*, 21(14), 3403–3418. <https://doi.org/10.1111/j.1365-294X.2012.05635.x>
- Peterson, B. K., Weber, J. N., Kay, E. H., Fisher, H. S., & Hoekstra, H. E. (2012). Double digest RADseq: An inexpensive method for de novo SNP discovery and genotyping in model and non-model species. *PLoS One*, 7(5), e37135. <https://doi.org/10.1371/journal.pone.0037135>
- Pike, D. A. (2013). Climate influences the global distribution of sea turtle nesting. *Global Ecology and Biogeography*, 22(5), 555–566. <https://doi.org/10.1111/geb.12025>
- Proietti, M. C., Reisser, J., Marins, L. F., Rodriguez-Zarate, C., Marcovaldi, M. A., Monteiro, D. S., Pattiaratchi, C., & Secchi, E. R. (2014). Genetic structure and natal origins of immature hawksbill turtles (*Eretmochelys imbricata*) in Brazilian waters. *PLoS One*, 9(2), e88746–e88812. <https://doi.org/10.1371/journal.pone.0088746>
- R Core Team (2021). *R: A language and environment for statistical computing*. R Foundation for Statistical Computing. <https://www.r-project.org/>
- Raj, A., Stephens, M., & Pritchard, J. K. (2014). FastSTRUCTURE: Variational inference of population structure in large SNP data sets. *Genetics*, 197(2), 573–589. <https://doi.org/10.1534/genetics.114.164350>
- Ray, N., Currat, M., Foll, M., & Excoffier, L. (2010). SPLATCHE2: A spatially explicit simulation framework for complex demography, genetic admixture and recombination. *Bioinformatics*, 26(23), 2993–2994. <https://doi.org/10.1093/bioinformatics/btq579>
- Reece, J. S., Castoe, T. A., & Parkinson, C. L. (2005). Historical perspectives on population genetics and conservation of three marine turtle species. *Conservation Genetics*, 6(2), 235–251. <https://doi.org/10.1007/s10592-004-7821-y>
- Reid, B. N., Naro-Maciel, E., Hahn, A. T., FitzSimmons, N. N., & Gehara, M. (2019). Geography best explains global patterns of genetic diversity and post-glacial co-expansion in marine turtles. *Molecular Ecology*, 28(14), 3358–3370. <https://doi.org/10.1111/mec.15165>
- Richardson, J. I., Bell, R., & Richardson, T. H. (1999). Population ecology and demographic implications drawn from an 11-year study of nesting hawksbill turtles, *Eretmochelys imbricata*, at Jumby Bay, Long Island, Antigua, West Indies. *Chelonian Conservation and Biology*, 3(2), 244–250.
- Roberts, M. A., Schwartz, T. S., & Karl, S. A. (2004). Global population genetic structure and male-mediated gene flow in the green sea turtle (*Chelonia mydas*): Analysis of microsatellite loci. *Genetics*, 166(4), 1857–1870. <https://doi.org/10.1534/genetics.166.4.1857>
- Rocha, L. A., Robertson, D. R., Rocha, C. R., Van Tassell, J. L., Craig, M. T., & Bowen, B. W. (2005). Recent invasion of the tropical Atlantic by an Indo-Pacific coral reef fish. *Molecular Ecology*, 14(13), 3921–3928. <https://doi.org/10.1111/j.1365-294X.2005.02698.x>
- Santos, A. J. B., Bellini, C., Bortolon, L. F. W., Outerbridge, B., Browne, D. C., Santos, A., Meylan, A., Meylan, P., Silva, B. M. G., Wanderlinde, J., Lima, E. H. S., Baptistotte, C., & Marcovaldi, M. A. (2019). Long-range movements and growth rates of Brazilian hawksbill turtles: Insights from a flipper-tagging program. *Chelonian Conservation and Biology*, 18(1), 75–81. <https://doi.org/10.2744/CCB-1343.1>
- Sbrocco, E. J. (2014). Paleo-MARSPEC: Gridded ocean climate layers for the mid-Holocene and Last Glacial Maximum. *Ecology*, 95(6), 1710. <https://doi.org/10.1890/14-0443.1>
- Sbrocco, E. J., & Barber, P. H. (2013). MARSPEC: Ocean climate layers for marine spatial ecology. *Ecology*, 94(4), 979. <https://doi.org/10.1890/12-1358.1>
- Shaffer, H. B., Meylan, P., & McKnight, M. L. (1997). Tests of turtle phylogeny: Molecular, morphological, and paleontological approaches. *Systematic Biology*, 46(2), 235–268. <https://doi.org/10.1093/sysbio/46.2.235>
- Shaffer, H. B., Minx, P., Warren, D. E., Shedlock, A. M., Thomson, R. C., Valenzuela, N., Abramyan, J., Amemiya, C. T., Badenhorst, D., Biggar, K. K., Borchert, G. M., Botka, C. W., Bowden, R. M., Braun, E. L., Bronikowski, A. M., Bruneau, B. G., Buck, L. T., Capel, B., Castoe, T. A., ... Wilson, R. K. (2013). The western painted turtle genome, a model for the evolution of extreme physiological adaptations in a slowly evolving lineage. *Genome Biology*, 14(3), R28. <https://doi.org/10.1186/gb-2013-14-3-r28>
- Shapiro, B. (2004). Rise and fall of the Beringian steppe bison. *Science*, 306(5701), 1561–1565. <https://doi.org/10.1126/science.1101074>
- Tager, D., Webster, J. M., Potts, D. C., Renema, W., Braga, J. C., & Pandolfi, J. M. (2010). Community dynamics of Pleistocene coral reefs during alternative climatic regimes. *Ecology*, 91(1), 191–200. <https://doi.org/10.1890/08-0422.1>
- Van Dam, R. P., Diez, C. E., Balazs, G. H., Colón Colón, L. A., McMillan, W. O., & Schroeder, B. (2008). Sex-specific migration patterns of hawksbill turtles breeding at Mona Island, Puerto Rico. *Endangered Species Research*, 4, 85–94. <https://doi.org/10.3354/esr00044>
- van der Zee, J. P., Christianen, M. J. A., Bérubé, M., Nava, M., Schut, K., Humber, F., Alfaro-Núñez, A., Becking, L. E., & Palsbøll, P. J. (2021). The population genomic structure of green turtles (*Chelonia mydas*) suggests a warm-water corridor for tropical marine fauna between the Atlantic and Indian oceans during the last interglacial. *Heredity*, 127(6), 510–521. <https://doi.org/10.1038/s41437-021-00475-0>
- Vargas, S. M., Jensen, M. P., Ho, S. Y. W., Mobaraki, A., Broderick, D., Mortimer, J. A., Whiting, S. D., Miller, J., Prince, R. I. T., Bell, I. P., Hoenner, X., Limpus, C. J., Santos, F. R., & Fitzsimmons, N. N. (2016). Phylogeography, genetic diversity, and management units



- of hawksbill turtles in the Indo-Pacific. *Journal of Heredity*, 107(3), 199–213. <https://doi.org/10.1093/jhered/esv091>
- Wang, Z., Pascual-Anaya, J., Zadissa, A., Li, W., Niimura, Y., Huang, Z., Li, C., White, S., Xiong, Z., Fang, D., Wang, B., Ming, Y., Chen, Y., Zheng, Y., Kuraku, S., Pignatelli, M., Herrero, J., Beal, K., Nozawa, M., ... Irie, N. (2013). The draft genomes of soft-shell turtle and green sea turtle yield insights into the development and evolution of the turtle-specific body plan. *Nature Genetics*, 45(6), 701–706. <https://doi.org/10.1038/ng.2615>
- Waples, R. S., & Anderson, E. C. (2017). Purging putative siblings from population genetic data sets: A cautionary view. *Molecular Ecology*, 26(5), 1211–1224. <https://doi.org/10.1111/mec.14022>
- Warmuth, V. M., & Ellegren, H. (2019). Genotype-free estimation of allele frequencies reduces bias and improves demographic inference from RADSeq data. *Molecular Ecology Resources*, 19(3), 586–596. <https://doi.org/10.1111/1755-0998.12990>
- Watterson, G. A. (1975). On the number of segregating sites in genetical models without recombination. *Theoretical Population Biology*, 7(2), 256–276. [https://doi.org/10.1016/0040-5809\(75\)90020-9](https://doi.org/10.1016/0040-5809(75)90020-9)
- Waycott, M., Duarte, C. M., Carruthers, T. J. B., Orth, R. J., Dennison, W. C., Olyarnik, S., Calladine, A., Fourqurean, J. W., Heck, K. L., Hughes, A. R., Kendrick, G. A., Kenworthy, W. J., Short, F. T., & Williams, S. L. (2009). Accelerating loss of seagrasses across the globe threatens coastal ecosystems. *Proceedings of the National Academy of Sciences*, 106(30), 12377–12381. <https://doi.org/10.1073/pnas.0905620106>
- Weir, B. S., Anderson, A. D., & Hepler, A. B. (2006). Genetic relatedness analysis: Modern data and new challenges. *Nature Reviews Genetics*, 7(10), 771–780. <https://doi.org/10.1038/nrg1960>
- Wright, S. (1931). Evolution in Mendelian populations. *Genetics*, 16(2), 97–159. <https://doi.org/10.1093/genetics/16.2.97>
- Zhao, X., Dupont, L., Schefuß, E., Bouimetarhan, I., & Wefer, G. (2017). Palynological evidence for Holocene climatic and oceanographic changes off western South Africa. *Quaternary Science Reviews*, 165, 88–101. <https://doi.org/10.1016/j.quascirev.2017.04.022>
- Zheng, X., Levine, D., Shen, J., Gogarten, S. M., Laurie, C., & Weir, B. S. (2012). A high-performance computing toolset for relatedness and principal component analysis of SNP data. *Bioinformatics*, 28(24), 3326–3328. <https://doi.org/10.1093/bioinformatics/bts606>

## SUPPORTING INFORMATION

Additional supporting information may be found in the online version of the article at the publisher's website.

**How to cite this article:** van der Zee, J. P., Christianen, M. J. A., Bérubé, M., Nava, M., van der Wal, S., Berkel, J., Bervoets, T., Meijer zu Schlochtern, M., Becking, L. E., & Palsbøll, P. J. (2022). Demographic changes in Pleistocene sea turtles were driven by past sea level fluctuations affecting feeding habitat availability. *Molecular Ecology*, 31, 1044–1056. <https://doi.org/10.1111/mec.16302>