

Cite this: *Anal. Methods*, 2021, 13, 1635

# Direct analysis of aromatic pollutants using a HPLC-FLD/DAD method for monitoring biodegradation processes†

Dilan Camille Aydin, \* Julian Zamudio Pineres, Fatma Al-Manji, Huub Rijnaarts and Tim Grotenhuis

Industrial discharges resulting in contaminated groundwater is a global environmental problem. For such contaminated groundwater cases, bioremediation is a cost efficient and environmentally friendly approach. The determination and quantification of these pollutants has gained great importance and researchers are currently seeking to develop labor extensive, accurate and reliable methods for evaluating their biodegradation process. In this study, a HPLC method was developed and optimized for the quantification of 11 industrial pollutants studied as two different mixtures: benzene, toluene, ethylbenzene, *o*, *m/p*-xylene, indane, indene, and naphthalene (mixture A) and benzene, monochlorobenzene, 1,2-dichlorobenzene, and 1,4-dichlorobenzene (mixture B). The method uses two different detectors: fluorescence detection and diode array. The fluorescence detector was used for mixture A to achieve lower quantification limits and to quantify separately *o*-xylene and indene due to them showing similar wavelength behaviors. The limit of detection was found to be between 2 and 70  $\mu\text{g L}^{-1}$  for mixture A and 290  $\mu\text{g L}^{-1}$  for mixture B. The limit of quantitation was between 6 and 210  $\mu\text{g L}^{-1}$  for mixture A and 980  $\mu\text{g L}^{-1}$  for mixture B, respectively. The novel part of this study is that aqueous samples can be directly measured with one-step sample preparation and it comes with other advantages such as low volumes of sampling from batch bottles and also avoidance of high cost, relative to other analytical techniques. Therefore, this analytical method aims to facilitate the quantification of various aromatic hydrocarbons in laboratory batch samples and can be used as a routine monitoring tool for biological degradation processes of these 11 prevalent contaminants.

Received 15th January 2021  
Accepted 24th February 2021

DOI: 10.1039/d1ay00083g

[rsc.li/methods](https://rsc.li/methods)

## 1 Introduction

Industrial wastes and accidental spills resulting in soil and groundwater contamination are becoming a global concern due to the toxicity and recalcitrance of many aromatic compounds.<sup>1</sup> Common pollutants found in industrial or manufactured gas work sites are benzene, toluene, ethylbenzene, xylene (BTEX), polyaromatic hydrocarbons (PAHs) and various chlorinated aromatic hydrocarbons.<sup>2,3</sup> These compounds are specified as hazardous, mostly classified as carcinogenic, and pose risks to human health and the environment.<sup>1,3</sup> Therefore, current research efforts are focused on the application of efficient remediation strategies for these compounds.<sup>4</sup> Among all remediation technologies available, biodegradation is the preferred approach due to being economical, energy efficient and environmental friendly.<sup>5</sup> However, despite the wide range of biodegradation research studies reported, one of the main

challenges is the lack of an adequate method for the analytical quantification of these pollutants. Developing a suitable analytical method is a prerequisite in order to obtain reliable and accurate data during measurements.<sup>6</sup> Detailed information about different methods used for aromatic hydrocarbon determination and quantification was reviewed by Farhadian *et al.*<sup>5</sup> and AlSalka *et al.*<sup>7</sup> Each one of the discussed methods has its advantages and drawbacks, but the main focus on method selection should be based on the aim of the experiment and also other factors such as sample preparation, cost and the analysis time.<sup>8</sup> In aromatic hydrocarbon bioremediation research, one needs a single method that is comprehensive for all relevant compounds present in the pollution mixture often encountered in remediation projects. The method is required to be accurate, fast, cost-efficient<sup>8</sup> and thereby budget attractive and easy to handle in the laboratory and *in situ* pilot bioremediation technology development. For the measurements of monoaromatic compounds, a gas chromatography flame ionization detector (GC-FID), a GC-photo ionization detector (PID), GC-mass spectrometry (MS)<sup>9</sup> and a GC-barrier ionization discharge detector (BID)<sup>10</sup> are employed which are useful for detection in a low concentration range which is important to assess compliance

Wageningen University & Research, P.O. Box 17, 6700 AA Wageningen, The Netherlands. E-mail: [dilan.aydin@wur.nl](mailto:dilan.aydin@wur.nl)

† Electronic supplementary information (ESI) available. See DOI: 10.1039/d1ay00083g



with environmental thresholds (often in the  $\mu\text{g L}^{-1}$  range). Additionally, the GC technique and head-space (HS) sampling have been adopted by the Environmental Protection Agency (EPA) in many protocols. However these techniques come with disadvantages such as incompatibility with direct analyses in water samples and time consuming preparation steps (such as head-space extraction, purge and/or solid-phase micro-extraction) prior to analysis which may also require high cost equipment,<sup>11</sup> and laborious methods to identify intermediate products formed during bioconversion.<sup>12</sup> This renders these techniques less suitable to support lab and field technology development. The limitations of these GC-based methods can be overcome by using high performance liquid chromatography (HPLC), since it is more suited for direct aqueous sample analysis and can measure higher and wider ranges of concentrations for wide sets of aromatic pollutants, minimizing dilution or other pre-treatment steps.<sup>12</sup>

In this study, such a HPLC based method was developed with focus on the quantification of two different mixtures of compounds, namely one composed of benzene, toluene, ethylbenzene, *o*, *m/p*-xylene, indene, indane, and naphthalene (which will be referred to as mixture A), and one with benzene, monochlorobenzene, 1,2-dichlorobenzene and 1,4-dichlorobenzene (referred to as mixture B) (Fig. 1). These contaminants were selected in view of their prominent presence in a former gas work site and a chemical industrial area, respectively. The method aimed for a fast and reliable quantification of all compounds listed in Fig. 1, by avoiding complex sample preparation steps. Additionally, this method was developed in order to facilitate the work of daily basis biodegradation experiments, where reliable results can be obtained for aqueous samples with

Table 1 Information on the chemicals used in this study

Chemicals	Purity (%)	Supplier
Benzene	>99.7	VWR Chemicals (USA)
Toluene	$\geq 99.9$	Merck KGaA (Germany)
Ethylbenzene	99	Alfa Aesar (Germany)
<i>o</i> -Xylene	99	Alfa Aesar (Germany)
<i>m</i> -Xylene	99	Alfa Aesar (Germany)
<i>p</i> -Xylene	99	Acros Organics (Czechia)
Indane	95	Alfa Aesar (Germany)
Indene	$\geq 99$	Sigma-Aldrich (Germany)
Naphthalene	99	Sigma-Aldrich (Germany)
Monochlorobenzene	99	VWR Chemicals (France)
1,2-Dichlorobenzene	99	Acros Organics (Czechia)
1,4-Dichlorobenzene	99	Alfa Aesar (Germany)

low sampling volumes and by avoiding high use of organic solvents in the monitoring of biodegradation processes.

## 2 Experimental

The proposed method was developed and optimized by the use of HPLC with a fluorescence detector (FLD) and diode array detector (DAD) validated in terms of specificity, matrix effects, linearity, precision, recovery and limits of detection (LOD) and quantitation (LOQ).

### 2.1 Chemicals

Chemicals used for standard solution and sample preparation are given in Table 1. ULC/MS grade absolute methanol was purchased from Biosolve (Netherlands).

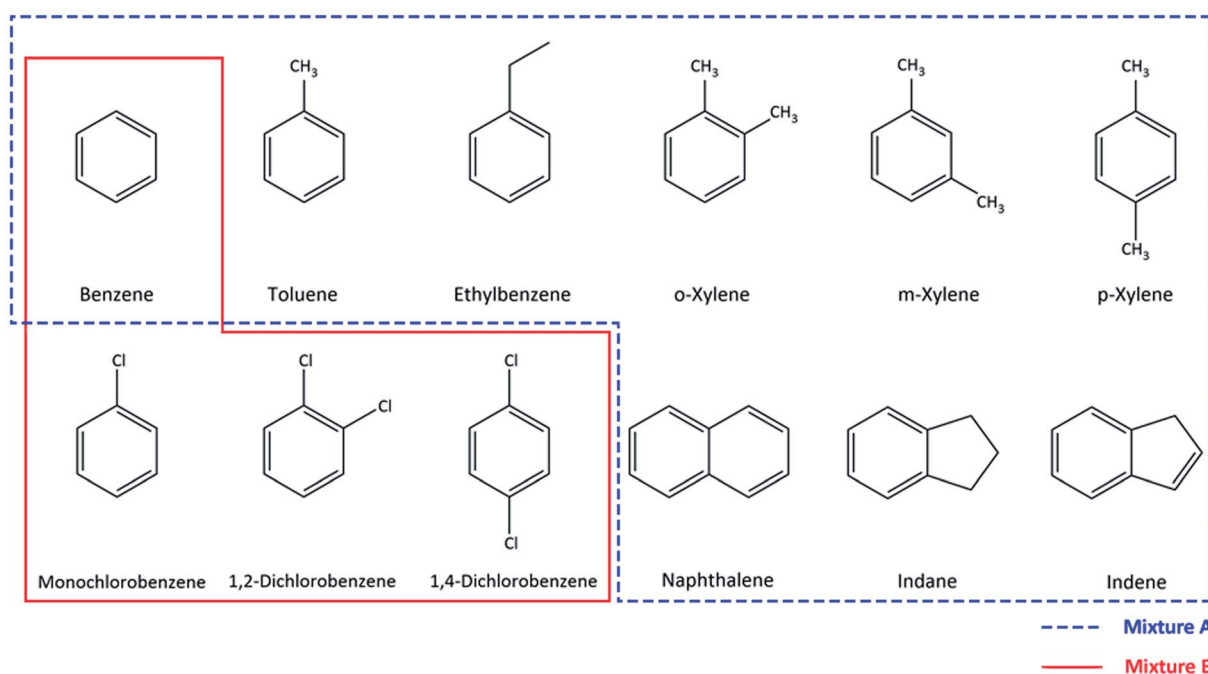


Fig. 1 Chemical structure of the compounds used in this study. Mixture A (dashed line): benzene, toluene, ethylbenzene, *o/m/p*-xylene, naphthalene, indene and indane; mixture B (line): benzene, monochlorobenzene, 1,2-dichlorobenzene, and 1,4-dichlorobenzene.



## 2.2 Instrumentation

HPLC analyses were performed using a Thermo HPLC with an Ultimate 3000 RS Diode Array detector and Ultimate 3000 RS fluorescence detector (Thermo Scientific Dionex, USA). For the separation of each analyte, reversed phase chromatography was performed by using an Acclaim™ Phenyl-1 HPLC Column 150 × 4.6 mm, 3 μm (Thermo Scientific Dionex, USA). The mobile phase is an isocratic mixture of 60% methanol and 40% Milli-Q water.

## 2.3 Standard calibration solutions

Stock solutions for mixture A and B were prepared at concentrations of 1 g L<sup>-1</sup> and 10 g L<sup>-1</sup> in 100 mL volumetric flasks, respectively. Each analyte was dissolved individually in methanol and was stored at 4 °C. Fresh working solutions were prepared daily by diluting the stock solutions to reach the desired concentration values in different matrices (Milli-Q water and groundwater for mixture A; Milli-Q water and medium for mixture B).

## 2.4 Sample preservation

As the aromatics are volatile in water, tests demonstrated that all samples need to contain methanol as a co-solvent in order to limit evaporation losses during HPLC autosampler procedures. Samples prepared only in Milli-Q water showed incoherent concentrations while with methanol, the concentrations of the compounds were found to stay stable up to 12 hours (Table S1†). Further, methanol addition led to higher resolution and efficiency in chromatographic results. Therefore, methanol was added to standard solutions and to the samples before auto-sampled injection to the HPLC.

The lowest methanol-to-sample ratio was determined for good reproducibility. In order to find optimal separation conditions and good stability in concentrations; different methanol : sample ratios (0 : 100, 10 : 90, 25 : 75, 50 : 50 v/v) were analysed using mixture B (compounds in mixture B cover the same range of volatilization properties as for compounds in mixture A). For the analytical chromatographic method

development, 25% of methanol was used in all samples unless otherwise specified.

## 2.5 Method optimization

The operational parameters such as the sample injection volume, flow rate, mobile phase composition and column temperature were optimized.

The injection volume varied between 10 and 80 μL and two different flow rates of 0.7 and 1.2 mL min<sup>-1</sup> were tested as described by Taleuzzaman *et al.*<sup>13</sup> Methanol was selected as an organic modifier in the mobile phase using the method developed by Amy Tan *et al.*<sup>12</sup> and in consequence several methanol : water ratios were tested as eluents in HPLC. The column temperature was varied between 25 and 35 °C. All compounds of mixture A were measured with the HPLC-FLD, while analytes from mixture B were determined with the HPLC-DAD. The UV and excitation/emission wavelengths for each compound together with their retention times are presented in Table 2, and specific conditions of each detector are given in Table S2.† The run time is 27 min for mixture A and 24 min for mixture B.

## 2.6 Specificity

Each compound was first measured individually to evaluate any possible interfering peaks when samples are prepared as mixtures. A fluorescence spectrum was generated by defining the spectral excitation and emission wavelength and the retention time for each compound was recorded. Samples prepared as in mixtures were run and peaks for each compound were compared with the spectra of the individual compound samples.

Standard solutions for each compound individually at 1 g L<sup>-1</sup> were prepared in methanol as the initial solution and measured at optimized parameters presented in Table 2. Blank samples and individual compounds were analysed in order to obtain a full UV spectrum between 210 and 340 nm. Then, mixture solutions of A and B (1 g L<sup>-1</sup> and 10 g L<sup>-1</sup>, respectively) dissolved in methanol were tested and compared within the individual compound's results to confirm specificity.

Table 2 The wavelengths and excitation/emission ranges of each compound applied in the HPLC measurements<sup>a</sup>

Compound	Detector: FLD		Detector: DAD	
	FLD (Exc/Em)	Retention time (min)	DAD (nm)	Retention time (min)
Benzene	210/260	9.0	210	7.76
Toluene	260/310	13.84		
Ethylbenzene	210/260	16.30		
Indene	280/330	17.10		
<i>o</i> -Xylene	210/260	17.40		
<i>m,p</i> -Xylene	260/310	18.10		
Indane	260/310	22.10		
Naphthalene	260/310	23.70		
Monochlorobenzene			210	12.48
1,2-Dichlorobenzene			210	19.83
1,4-Dichlorobenzene			210	20.65

<sup>a</sup> DAD; diode-array detector, FLD; fluorescence detector, Exc/Em; excitation/emission.



## 2.7 Method development

This method was assessed in terms of matrix effects, linearity, intermediate precision, recovery and detection and quantitation limits as described by AlSalka *et al.*<sup>7</sup> and Filho *et al.*<sup>14</sup>

**2.7.1 Matrix effect.** The effect of different matrices was tested in order to observe any discrepancy between measurements. Therefore, for compounds in mixture A, two different matrices were selected: Milli-Q water and groundwater obtained from a former gas work site. The stock solution of mixture A (1 g L<sup>-1</sup>) was dissolved in six different 50 mL volumetric flasks with a methanol : given matrix (25 : 75 v/v) in order to reach final concentrations of 0.5, 1, 2.5, 5, 7.5 and 10 mg L<sup>-1</sup>.

For mixture B, the matrix effect was tested in samples with Milli-Q water and the medium as prepared according to Lindeboom *et al.*<sup>15</sup> The same procedure as in mixture A was applied, where 10 g L<sup>-1</sup> of mixture B stock solution was dissolved in 50 mL of methanol : given matrix (25 : 75 v/v) at five different concentrations (1, 2.5, 5, 7.5 and 12 mg L<sup>-1</sup>). Each peak for each compound was investigated for spectral information such as the retention time, peak height and area. The pair *t*-test was performed and *p*-values <0.05 were determined as an indicator of matrix effects.

**2.7.2 Calibration curve.** Calibration curves were generated in order to determine a linear relationship between the concentration of the compound and the area in the chromatogram. Therefore, different concentrations between 0.5 and 10 mg L<sup>-1</sup> for mixture A and 1–12 mg L<sup>-1</sup> for mixture B were measured to assess the linearity of the method. Standard solutions of each concentration were prepared by diluting methanol and the given matrix (groundwater or medium) in 50 mL volumetric flasks as described previously. Measurements were performed in triplicate. The linearity and the correlation coefficient (*R*<sup>2</sup>) for each compound were calculated with a linear regression model.

**2.7.3 Accuracy and precision.** The accuracy of the method was tested in terms of intermediate precision and recovery. Intermediate precision was determined by calculating the percentage relative standard deviation (RSD) for each sample, at different concentration levels (0.5–10 mg L<sup>-1</sup> for mixture A and 1–12 mg L<sup>-1</sup> for mixture B) within different days. RSDs were determined with the below equation:<sup>7</sup>

$$\text{Intermediate precision (RSD\%)} = (\text{SD}/C_m) \times 100$$

Recovery experiments were performed at 10 mg L<sup>-1</sup> concentration for both mixtures A and B, in duplicate. The average percent recovery was calculated with the below equation:<sup>14</sup>

$$\text{Recovery (\%)} = (C_{\text{obs}}/C_r) \times 100$$

SD is the standard deviation, *C*<sub>m</sub> is the mean value for the replicates, *C*<sub>obs</sub> refers to the concentration observed in the samples and *C*<sub>r</sub> is the initial spiked concentration of the reference sample.

**2.7.4 LOQ and LOD.** According to Eurochem Guidelines,<sup>16</sup> the lowest concentration of the analyte that can be measured is referred to as the limit of detection (LOD), and the lowest level at which the performance is adequate is defined as the limit of quantitation (LOQ). Within this method, the LOD and LOQ values were determined from the standard deviation of the results at low concentrations (SD) of the calibration curve and respective slope (*S*). Calculations were performed using the equations given below:<sup>14</sup>

$$\text{LOD} = 3 \times (\text{SD}/S)$$

$$\text{LOQ} = 10 \times (\text{SD}/S)$$

## 3 Results and discussion

### 3.1 Sample preservation

Different methanol : sample ratios were tested with compounds of mixture B as shown in Table 3. As mentioned before, methanol was added to the samples in order to avoid evaporation of volatiles during HPLC autosampler procedures. According to Eurochem Guidelines,<sup>16</sup> the acceptance criteria for a relative standard deviation correspond to 10% RSD response. Therefore, a ratio of 25% methanol was selected as the optimum due to the reason of showing minimum % RSD response values that are acceptable for all compounds. Additionally, 50% methanol was preferred due to the reasons of showing good reproducibility with the lowest LOD and LOQ possible for all the compounds, and also having lower methanol–sample ratios. The same methanol : sample ratio was applied to mixture A, since compounds in mixture A show a similar structure and similar physical/chemical properties to the compounds in mixture B.

### 3.2 Optimization

Optimal chromatographic conditions determined for this method are summarized in Table 4. Optimum conditions were determined according to better peak resolutions and smaller standard deviation outcomes.

The optimal range of injection volumes was determined to be 80 μL for mixture A and 50 μL for mixture B. Amy Tan *et al.*<sup>12</sup>

**Table 3** Effect of the methanol content on the repeatability expressed in % RSD<sup>a</sup>

Methanol (%)	RSD (%)			
	Benzene	MCB	1,2-DCB	1,4-DCB
0	12	3.0	4.9	16.5
10	5.9	5.7	10.5	17.0
25	6.5	3.7	5.2	7.2
50	1.7	5.3	2.1	8.9

<sup>a</sup> RSD; relative standard deviation, MCB; monochlorobenzene, DCB; dichlorobenzene.



Table 4 The final chromatographic conditions used for the detection of all compounds used in this study

Parameters	Mixture	
	A	B
Volume	80 $\mu\text{L}$	50 $\mu\text{L}$
Flow rate	0.7 $\text{mL min}^{-1}$	0.7 $\text{mL min}^{-1}$
Mobile phase (isocratic mode)	60 : 40 (methanol : water) %	60 : 40 (methanol : water) %
Column temperature	35 $^{\circ}\text{C}$	35 $^{\circ}\text{C}$
Run time	27 min	24 min

reported that high injection volumes may lead to the presence of some residual peaks at the end of the analysis. In our study, where the maximum injection volume was 80  $\mu\text{L}$ , such a phenomenon was not encountered.

To determine the optimum conditions for compound separation, different flow rates were tested upon their effect on the duration of the analysis and the chromatographic resolution.<sup>12</sup> For this study, 0.7  $\text{mL min}^{-1}$  and 1.2  $\text{mL min}^{-1}$  were tested. 0.7  $\text{mL min}^{-1}$  showed higher efficiency and better analytical resolution.

### 3.3 Specificity

To evaluate any possible interfering peaks between compounds, samples prepared as individual compounds were compared to samples prepared as mixtures under optimal conditions given in Table 4. For mixture B, overlapping peaks were not recorded and all compounds were well separated with the use of a DAD (Fig. 2). For mixture A, all compounds could be quantified without interferences by the use of the FLD and the fluorescence properties of the compounds. Originally, *o*-xylene was detected with an excitation and emission wavelength of 210/260 nm with overlapping peaks between indene and *o*-xylene (Fig. 3a).

Changing indene detection to 280/330 nm (Fig. 3b), differentiation and quantification of both compounds became possible.

### 3.4 Method development

**3.4.1 Matrix effect.** Mixture A samples, diluted in methanol and groundwater, were analysed and probabilities (pair *t*-test values) at each concentration was calculated for both matrices. *P*-values smaller than 0.05 indicated that the matrix effect was detected, showing that different matrices have an influence on the quantification. As seen in Table S3,<sup>†</sup> a matrix effect was present for *m/p*-xylene at all concentrations and also for other compounds such as ethylbenzene, *o*-xylene, indane, indene and naphthalene at different concentrations. Mixture B prepared in methanol and the medium was also compared and a matrix effect was observed at all concentrations for monochlorobenzene (Table S4<sup>†</sup>) and at different concentrations for the other compounds. Therefore, it was concluded that standard solutions should always be prepared in the matrix of interest.

**3.4.2 Calibration curve.** The standard solutions of mixture A and B for calibration were prepared in defined matrices and analysed within the estimated concentration range. A linear regression method was applied. The slope and the linear

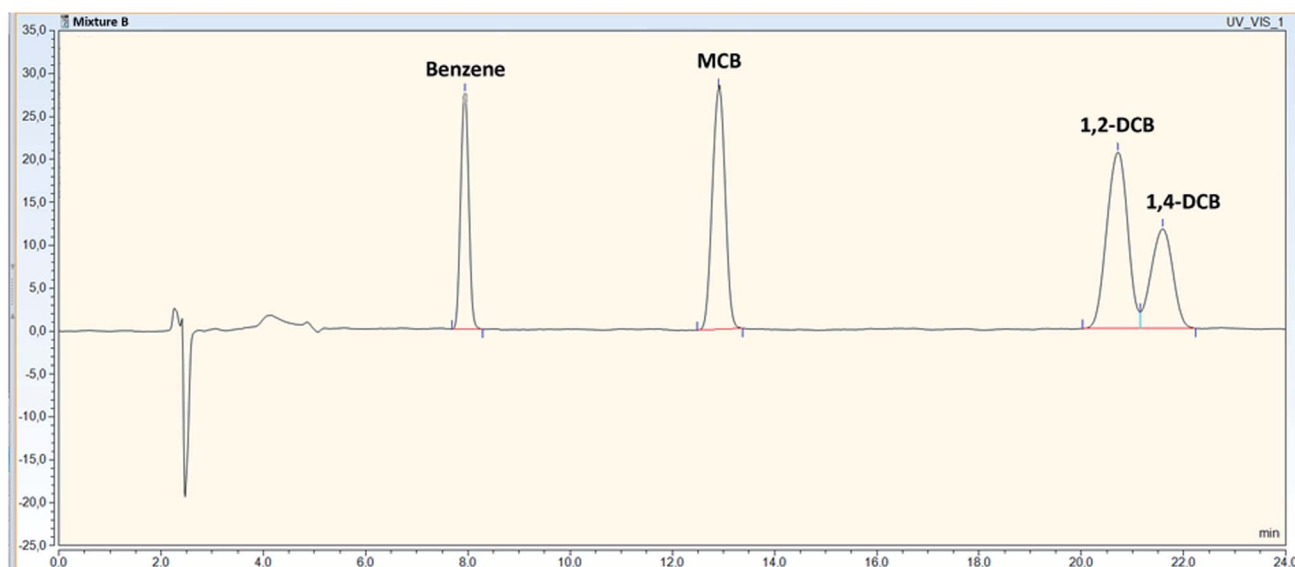


Fig. 2 Chromatogram of all compounds in mixture B ( $12 \text{ mg L}^{-1}$ ), identified with a HPLC-DAD at 210 nm.



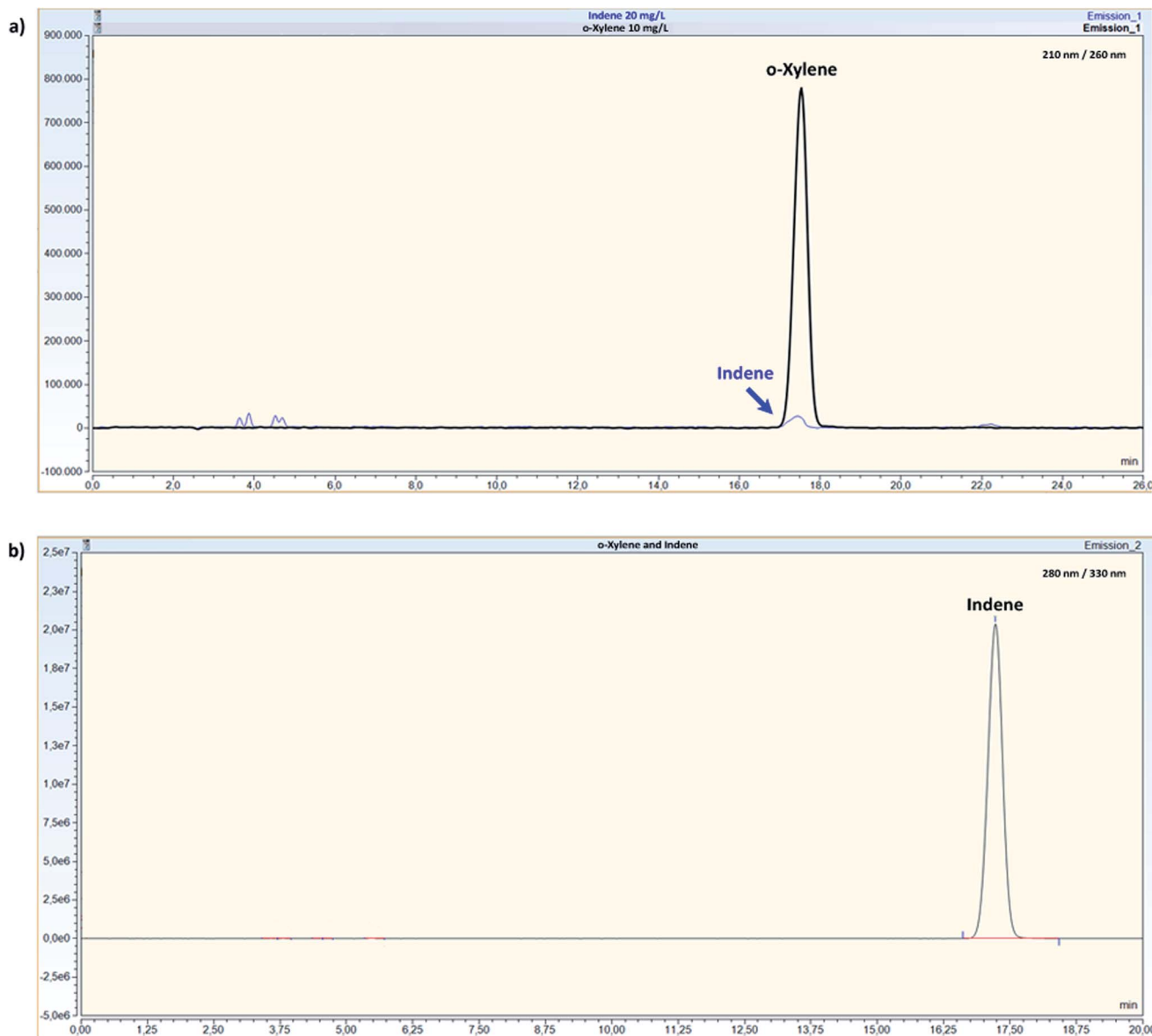


Fig. 3 Chromatogram of *o*-xylene ( $10 \text{ mg L}^{-1}$ ) detected at 210/260 nm. An interference with indene ( $20 \text{ mg L}^{-1}$ ) can be seen as a small peak (a) and chromatogram of only indene at 280/330 nm (b) by the use of a HPLC-FLD.

regression coefficient ( $R^2$ ) for each analyte were calculated. Correlation coefficients calculated for each analyte are shown in Table S5 and S6,<sup>†</sup> respectively. The linearity of the current method was confirmed with the correlation coefficient being higher than 0.99 for all the compounds.

**3.4.3 Accuracy and precision.** Tables S7 and S8<sup>†</sup> present the results of the intermediate precision of the proposed method for mixtures A and B, respectively. For the precision, mixture A prepared at different concentrations (Table S7<sup>†</sup>) in methanol : groundwater showed RSD values between 0.25 and 14.39%. RSD values varied between 0.68 and 4.01% for compounds of mixture B, prepared in methanol : medium at different concentrations (Table S8<sup>†</sup>). The results were convenient because RSD values for all the compounds were below

20%, indicating a high level of precision as stated by Filho *et al.*<sup>14</sup> and also meeting the US EPA quality control criteria.<sup>7</sup> Recovery values for both mixtures were found to be between 82 and 110% as given in Table S9 and S10.<sup>†</sup> The obtained values were found to be within the acceptable recovery limits determined to be 80–120% according to US EPA quality control criteria.<sup>7</sup>

**3.4.4 LOQ and LOD.** The LOD and LOQ for each compound were defined and are given in Table 5. The LOD and LOQ are matrix dependent, and therefore the LOQ was determined for mixture A in groundwater and in the medium for mixture B.

The LOQ value was found to range between  $6 \mu\text{g L}^{-1}$  (indene and naphthalene) and  $210 \mu\text{g L}^{-1}$  (benzene) for mixture A and was  $980 \mu\text{g L}^{-1}$  for all compounds in mixture B. These results



**Table 5** LOD and LOQ values of the developed method for mixtures A and B<sup>a</sup>

Compound	LOD ( $\mu\text{g L}^{-1}$ )	LOQ ( $\mu\text{g L}^{-1}$ )
<b>Mixture A</b>		
Benzene	70	210
Toluene	23	70
Ethylbenzene	36	110
<i>o</i> -Xylene	36	110
<i>p/m</i> -Xylene	5	15
Indane	12	36
Indene	2	6
Naphthalene	2	6
<b>Mixture B</b>		
Benzene	290	980
Monochlorobenzene	290	980
1,2-Dichlorobenzene	290	980
1,4-Dichlorobenzene	290	980

<sup>a</sup> LOD; limit of detection, LOQ; limit of quantitation.

were found to be convenient for researchers performing lab scale biodegradation monitoring experiments. When initial concentrations of  $10 \text{ mg L}^{-1}$  are applied, the proposed method shows a degradation of 90% (mixture B) to over 98% (mixture A) conversion of the studied compounds.

## 4 Discussion

### 4.1 Use of a phenyl column and FLD detector

This method was developed by following the study of Amy Tan *et al.*<sup>12</sup> where they investigated BTEX and styrene with a HPLC-DAD with the use of a phenyl-1 column. According to the manufacturer's information, the selected column has a unique selectivity of aromatic compounds and higher chromatographic performance. The bonded phase displays greater  $\pi$ - $\pi$  interactions than other phenyl phases and provides enhanced aromatic selectivity and higher hydrophobic retention. Therefore, we used this column as recommended by Amy Tan *et al.*<sup>12</sup> contrary to the common use of C18 columns selected for highly volatile compounds. Unfortunately, the use of phenyl columns was not sufficient for the detection and quantification of all compounds in mixture A in one single run. This issue was solved by supplementing the method of Amy Tan *et al.*<sup>12</sup> with the use of a FLD detector. This way, compounds showing peaks at similar retention times such as *o*-xylene and indene could be differentiated with the use of a fluorescence detector in different excitation/emission ranges. By the use of a HPLC-DAD method; benzene, monochlorobenzene, 1,2-dichlorobenzene and 1,4-dichlorobenzene were quantified in a single run. Using the same method with a FLD, BTEX, indane, indene and naphthalene could also be quantified in a single run.

### 4.2 Sample preparation steps and low LOD concentrations

Farhadian *et al.*<sup>5</sup> reported that HPLC is often not suitable for accurate separation of ethylbenzene from xylene isomers;

however, in the study by AlSalka *et al.*<sup>7</sup> they were able to quantify BTEX from environmental samples with the use of HPLC-DAD without any interference between the compounds of interest. Only, in the study of AlSalka *et al.*, an additional step prior to injection to HPLC is needed where BTEX compounds are transferred from water to an organic solvent (acetonitrile) with the help of  $\text{N}_2$  gas. In that step, an amount of 75 mL of sample is needed for BTEX to be transferred to acetonitrile. Since they are dealing with environmental samples, this amount may not be considered as high. Solely, in laboratory spiked samples, minimizing the sample volume is extremely important especially if you need frequent sampling. This is why, this study focused on developing a method without a time-consuming preparation step where high sample volumes might be wasted. Keeping this in mind, the sample preparation step developed by AlSalka *et al.* allows reaching low LOD values that are crucial for environmental sampling, *i.e.* showing compliance to or exceeding legislative thresholds that are between  $0.1$  and  $50 \mu\text{g L}^{-1}$  (BTEX).<sup>17</sup>

Pascale *et al.*<sup>10</sup> published a quantitative analytical GC-BID method for monitoring BTEX in low contaminated water samples and were able to determine BTEX in concentrations below legal limits ( $\mu\text{g L}^{-1}$ ). The disadvantage of this method is that again, high sample volumes are needed (15 mL) and it is only applicable for quantification at very low BTEX concentrations. When high concentrations are applied (higher than trace BTEX), chromatographic peaks of all analytes could interfere with the adjacent peaks or with the baseline. Their method can be a good option for quality control purposes but not ideal for laboratory spiked samples where high concentrations are studied and routine monitoring/sampling is needed.

### 4.3 Quantification of indane and indene

This study reports for the first time the direct quantification of indane and indene in water samples using HPLC even though these compounds are commonly found at high concentrations in groundwater of many industrial sites but are often not further studied for analytical or remediation purposes. Mundt and Hollender<sup>18</sup> inspected indane and indene in groundwater samples and quantified these with the use of LC-DAD UV-/FLD/-MS but in their study, samples needed to be treated with solid phase extraction (SPE) materials prior to analysis. These authors also tested spiked non-contaminated groundwater samples, and found low LOD values, namely  $0.4 \mu\text{g L}^{-1}$  for indene and  $1.6 \mu\text{g L}^{-1}$  for indane, but recovery rates were found to be below 25%. In the study reported here, only one-step preparation (methanol addition) is needed before injection to HPLC, and recovery rates were between 82 and 110%, in the range of acceptable limits for recovery according to US EPA methods.

### 4.4 HPLC method to facilitate routine lab-scale biodegradation experiments

Taking all results into account, the HPLC method described above is reliable, practical and fits for analysis of the contaminants commonly found in manufactured gas plant sites and



chemical industrial areas. The tested method proved to be specific as all compounds could be identified and quantified at high accuracy applied in biological degradation experiments often in the range of 0.1 to 10 mg L<sup>-1</sup>. Benzene had a somewhat higher LOQ value of 210 µg L<sup>-1</sup>, which wasn't hampering the experiment for this study. Further, no laborious pre-treatment of samples is needed and sample volumes required for quantification is rather minimal (>375 µL). Proposed injection volumes within the method will allow a serial sampling of experimental batch bottles without significant changes of the total liquid volume in such batch experiments. Therefore, this method can facilitate the work of biodegradation researchers, as reliable results can be obtained with low sampling volumes and it is a relatively simple analytical method avoiding the use of organic solvents or complex extraction methods in the monitoring of *in situ* or laboratory based biodegradation processes.

## 5 Conclusions

A single step analysis method for the quantification of 11 different (aromatic and chlorinated) compounds in aqueous samples was developed and validated by the use of a HPLC-FLD/DAD method. The optimum conditions for HPLC operation were determined to be a mobile phase of 60% methanol, with 50 µL (mixture B) and 80 µL (mixture A) injection volume, at a flow rate of 0.7 mL min<sup>-1</sup> and a detection of 210 nm wavelength and the use of a FLD for the separation of indene and xylene isomers at different excitation and emission wavelength pairs. Under determined optimum conditions, chlorinated and non-chlorinated aromatic compounds could be quantified within 24 and 27 min, respectively. The method was also tested and confirmed in terms of intermediate precision and recovery, showing acceptable results fitting the quality control criteria of US EPA methods.

To the best of our knowledge, this is the first time that indane and indene, together with BTEX and naphthalene were measured in aqueous samples with an HPLC method. Additionally, LOD and LOQ values were defined for all the compounds, within the detection range of 0.1 to 10 mg L<sup>-1</sup>, suitable for investigation of lab-scale biodegradation processes. The method proved to be simple and easy to use for daily basis biodegradation measurements.

## Author contributions

Dilan C. Aydin: methodology, formal analysis, and writing-original draft. Julian Zamudio Pineres: formal analysis, methodology, and writing – review & editing. Fatma Al-Manji: formal analysis, methodology, and writing – review & editing. Huub Rijnaarts: supervision, and writing – review & editing. Tim Grotenhuis: supervision, and writing-review & editing.

## Conflicts of interest

The authors declare no conflict of interest.

## Acknowledgements

The authors are grateful for the financing of this study by the Municipality of Utrecht, the Netherlands. This study is part of the project BestParc Utrecht, the Netherlands with the identification mark 4281188/170821/1002-gl.

## References

- 1 P. S. Birak and C. T. Miller, *J. Contam. Hydrol.*, 2009, **105**, 81–98.
- 2 M. Mundt, K. Althoff, W. Dott and J. Hollender, *Acta Hydrochim. Hydrobiol.*, 2003, **31**, 204–212.
- 3 P. Jandera, J. Fischer and B. Prokes, *Chromatographia*, 2001, **54**, 581–587.
- 4 R. Chakraborty and J. D. Coates, *Appl. Microbiol. Biotechnol.*, 2004, **64**, 437–446.
- 5 M. Farhadian, D. Duchez, C. Vachelard and C. Larroche, *Water Res.*, 2008, **42**, 1325–1341.
- 6 B. V. Kumar, V. K. Gaur, R. Kumar, S. Sharma and C. S. Akolkar, *Adv. Appl. Sci. Res.*, 2014, **5**, 201–209.
- 7 Y. AlSalka, F. Karabet and S. Hashem, *Anal. Methods*, 2010, **2**, 1026–1035.
- 8 T. M. S. Yamada, A. Dalva, C. R. Morais and A. A. Mozeto, *J. Chromatogr. Sci.*, 2009, **47**, 794–799.
- 9 Y. Huang, J. Wei, J. Song, M. Chen and Y. Luo, *Chemosphere*, 2013, **92**, 1010–1016.
- 10 R. Pascale, G. Bianco, S. Calace, S. Masi, I. M. Mancini, G. Mazzone and D. Caniani, *J. Chromatogr. A*, 2018, **1548**, 10–18.
- 11 A. Sarafraz-Yazdi, A. H. Amiri and Z. Es'haghi, *Chemosphere*, 2008, **71**, 671–676.
- 12 G.-Y. Amy Tan, C.-L. Chen, L. Zhao, Y. Mo, V. W. C. Chang and J.-Y. Wang, *Anal. Methods*, 2012, **4**, 3545–3550.
- 13 M. Taleuzzaman, S. Ali, S. J. Gilani, S. S. Imam and A. Hafeez, *Austin J. Anal. Pharm. Chem.*, 2015, **2**(6), 1056.
- 14 C. M. C. Filho, M. N. L. Neto, R. S. Teixeira, A. A. C. C. Pais and A. J. M. Valente, *J. Liq. Chromatogr. Relat. Technol.*, 2017, **39**, 837–846.
- 15 R. E. Lindeboom, F. G. Feroso, J. Weijma, K. Zagt and J. B. van Lier, *Water Sci. Technol.*, 2011, **64**, 647–653.
- 16 *Eurachem Guide: the Fitness for Purpose of Analytical Methods – A Laboratory Guide to Method Validation and Related Topics*, ed. B. Magnusson and U. Örnemark, 2nd edn 2014, ISBN 978-91-87461-59-0.
- 17 R. Sethi and A. Di Molfetta, in *Groundwater Engineering: A Technical Approach to Hydrogeology, Contaminant Transport and Groundwater Remediation*, Springer International Publishing, Cham, 2019, pp. 169–192.
- 18 M. Mundt and J. Hollender, *J. Chromatogr. A*, 2005, **1065**, 211–218.

