



from relief to recovery

LEAVING NO ONE BEHIND

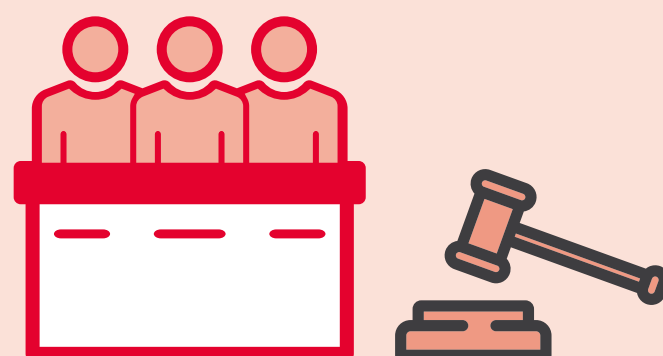
THE POWER OF EQUALITY WHEN PLACING PEOPLE AT THE CENTER

Access to justice and legal empowerment need to be key aspects of land registration

FAIR OUTCOMES IN LAND
REGISTRATION DEPEND ON
LAND HOLDERS' **GOOD LEGAL
AWARENESS**



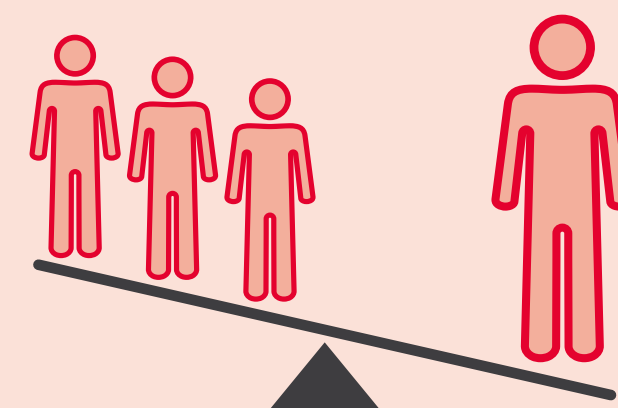
LEGAL ADVICE FROM
PARALEGALS OR LAWYERS
CAN HELP VULNERABLE
RIGHT-HOLDERS **CLAIM AND
DEFEND THEIR RIGHTS**



**ACCESSIBLE AND LEGITIMATE
JUSTICE INSTITUTIONS** ARE
NEEDED TO SUPPORT
THE POSITIVE EFFECTS OF
LAND REGISTRATION



LAND REGISTRATION MUST BE
COMPLEMENTED WITH **ACCESS
TO JUSTICE MEASURES** AND
MEASURES THAT DEAL WITH
**STRUCTURAL INEQUALITY AND
EXCLUSION** IN LAND ACCESS



KIT Royal
Tropical
Institute

Radboud University



WAGENINGEN
UNIVERSITY & RESEARCH



**Knowledge
Management
Fund**

Knowledge
Platform
Security &
Rule of Law