

Title: Suitable cropland area for seed potato production in parts of Indonesia.

J.G. Conijn, H. Hengsdijk, B. Rutgers & Nikardi Gunadi (2020).

Series: Mapping land suitability in Indonesia, no. 11.

Source: Openstreetmap (© OpenStreetMap contributors).

Url: <https://www.openstreetmap.org/copyright/en>

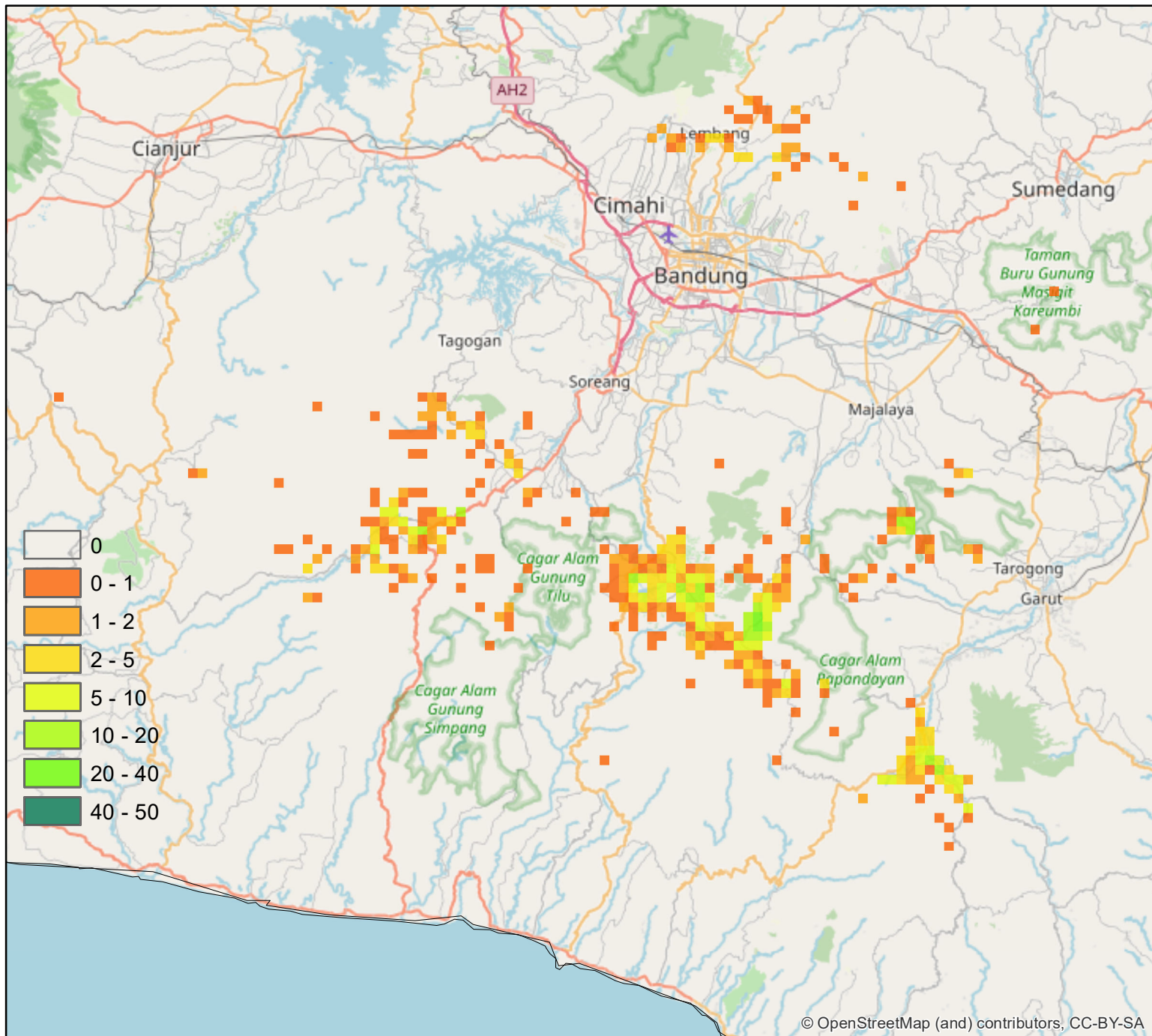
Each map is a combination of "Openstreetmap" as base layer and a raster map depicting pixels with suitable cropland areas for seed potato production (= overlay). The "Openstreetmap" contains irregular green areas, illustrating forested areas. The raster map for entire Indonesia has been published in "Mapping land suitability in Indonesia, no. 10".

Resolution of the overlaying map is 30 arcsec, i.e. pixels have a total area of circa 85 ha.

Maps included:

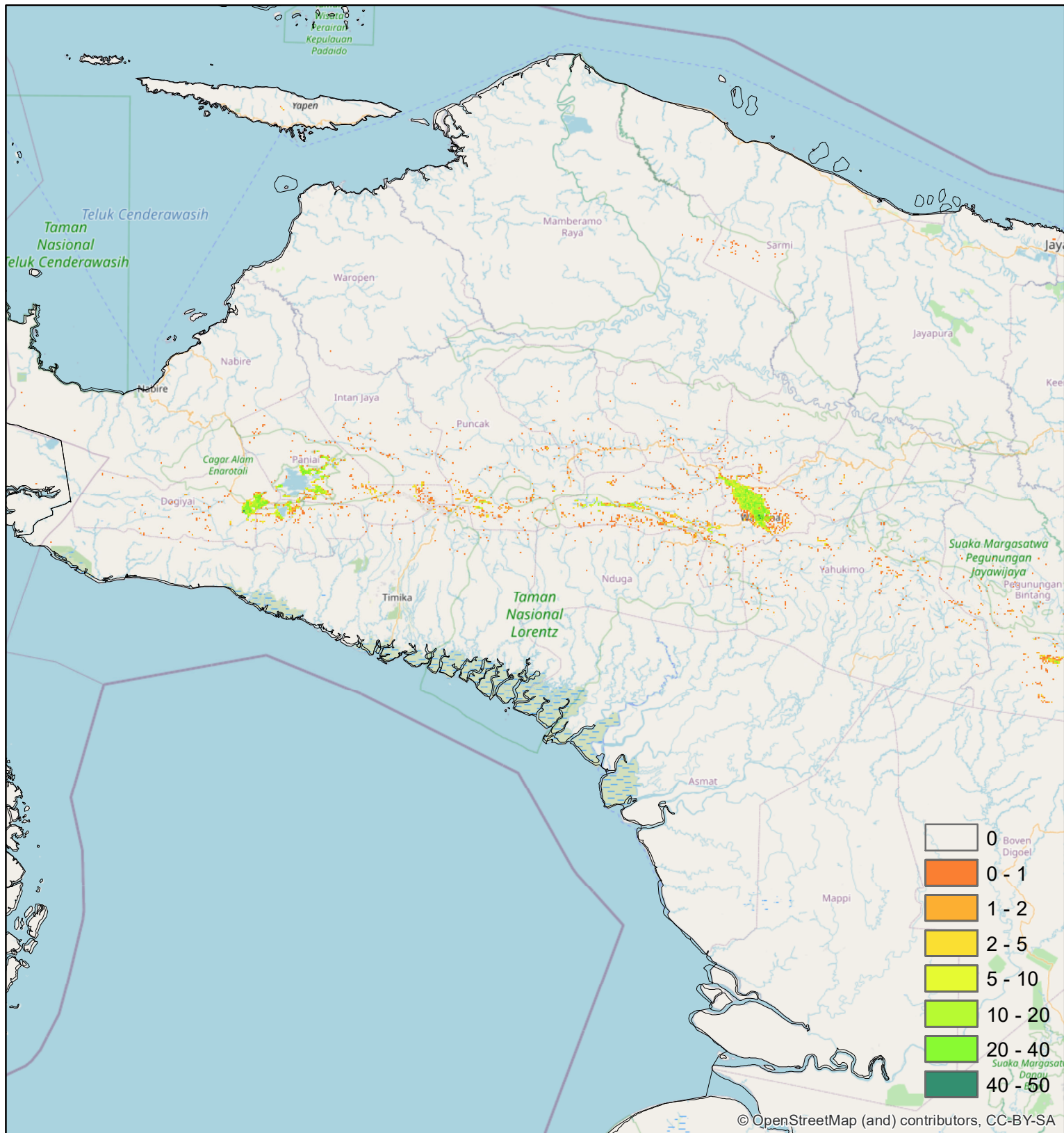
1. [Part of Java](#)
2. [Papua](#)
3. [Part of Papua \(west\)](#)
4. [Part of Papua \(east\)](#)
5. [Sulawesi](#)
6. [Part of Sumatra](#)

Part of Java



Current cropland area (ha) per pixel, suitable for seed potato production
(total area of a pixel is approx. 85 ha)
Suitable if: Elevation > 1200 m and Slope < 2%

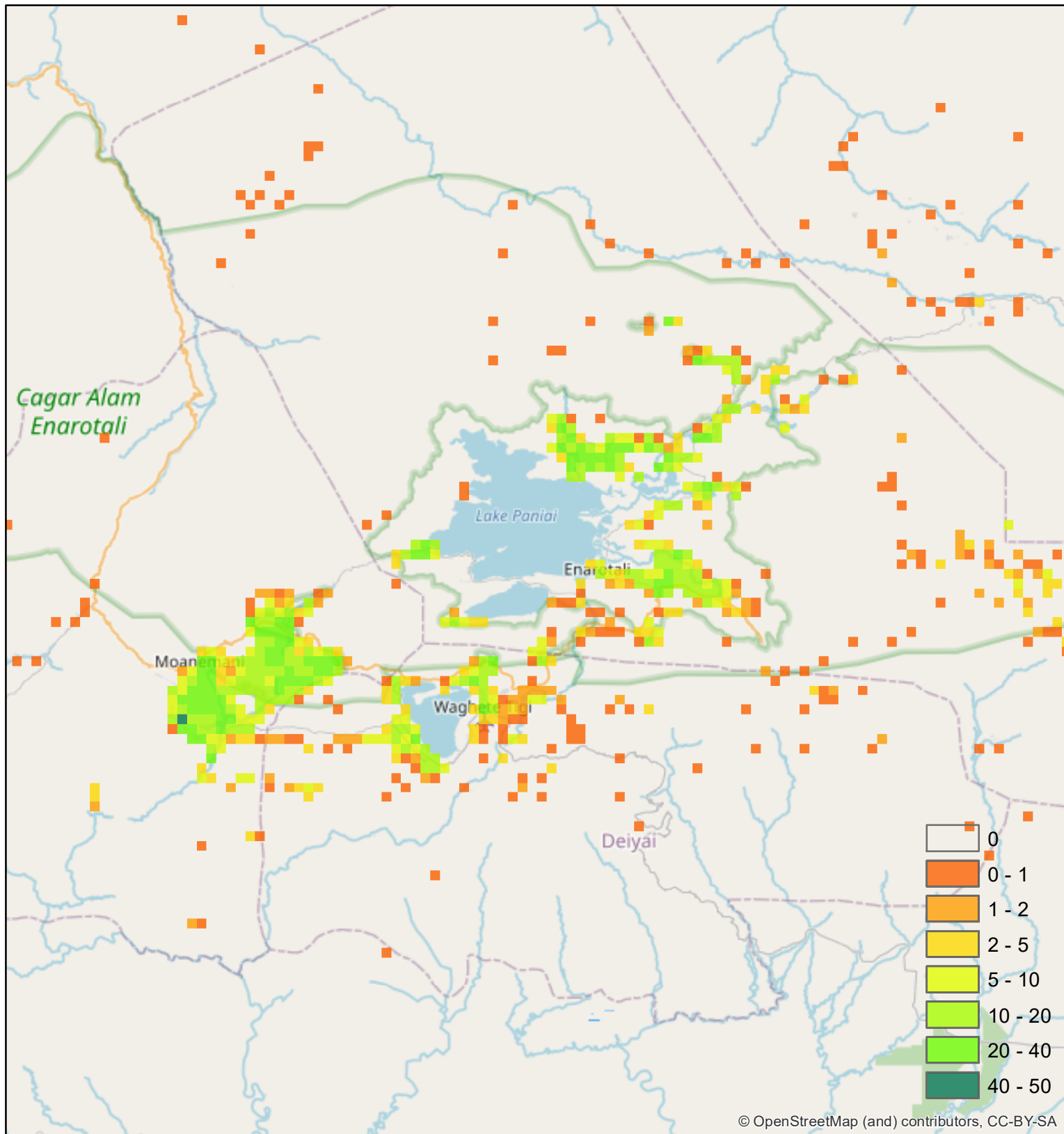
Papua



Current cropland area (ha) per pixel, suitable for seed potato production
(total area of a pixel is approx. 85 ha)

Suitable if: Elevation > 1200 m and Slope < 2 %

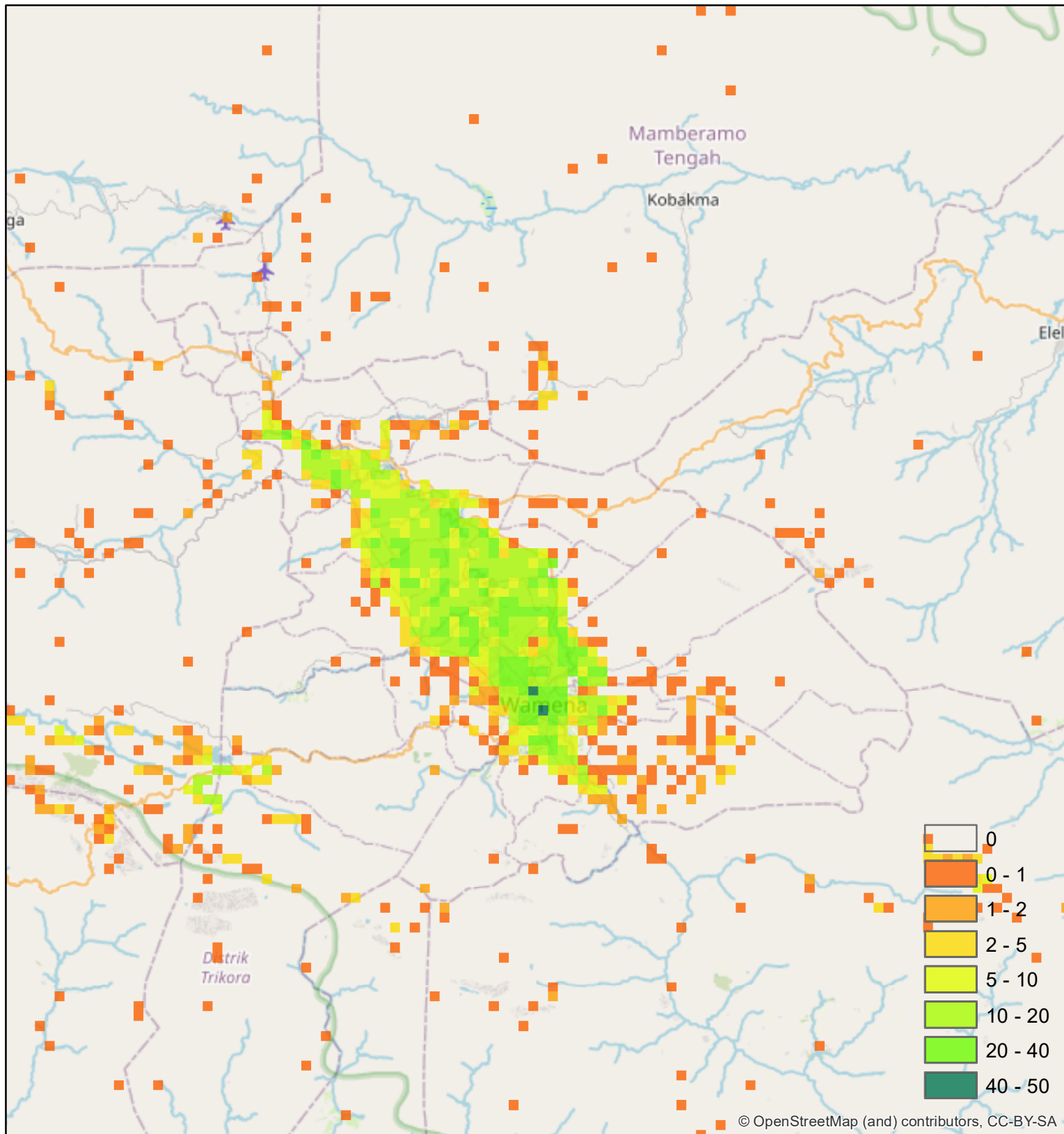
Part of Papua (west)



Current cropland area (ha) per pixel, suitable for seed potato production
(total area of a pixel is approx. 85 ha)

Suitable if: Elevation > 1200 m and Slope < 2 %

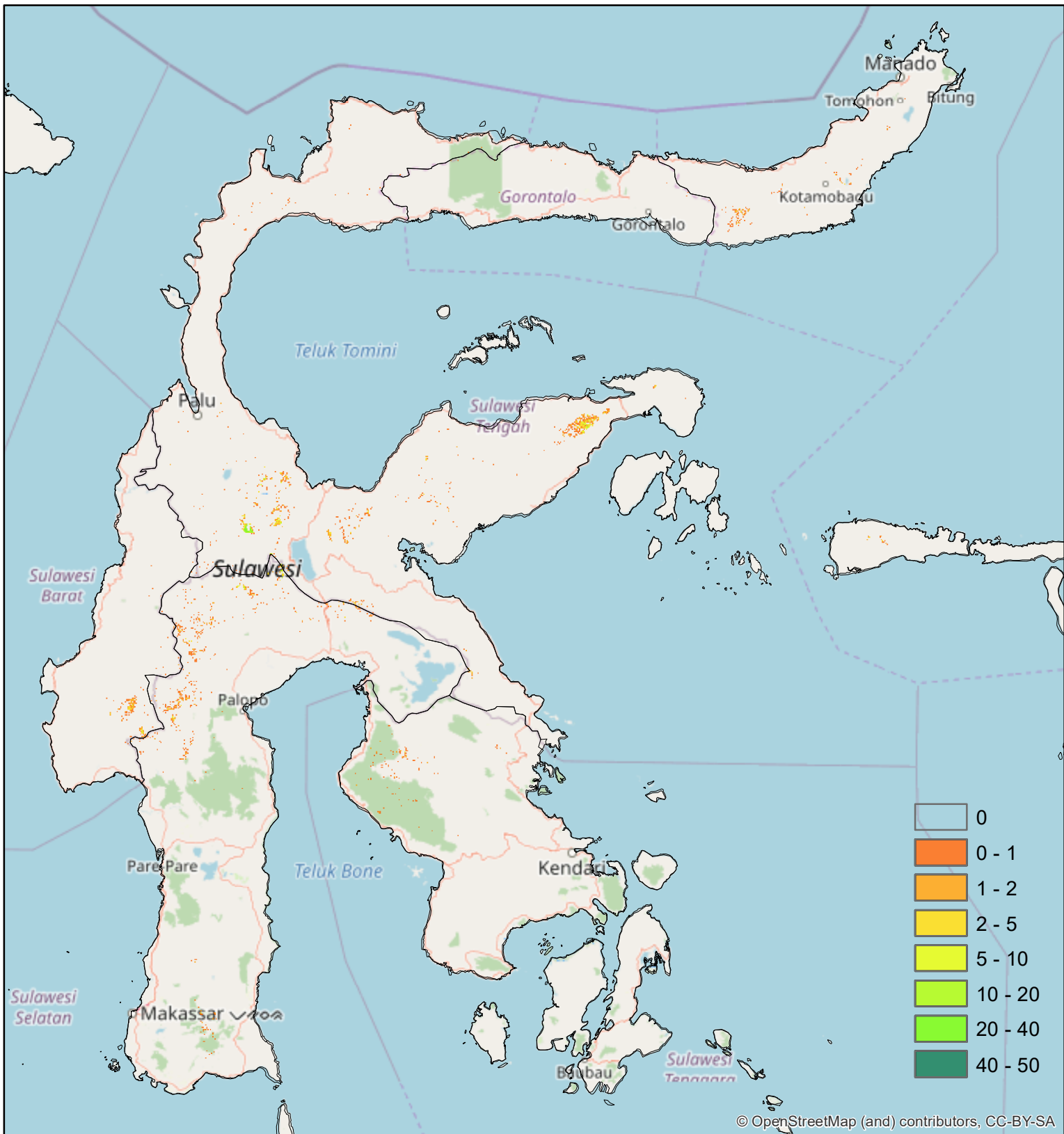
Part of Papua (east)



Current cropland area (ha) per pixel, suitable for seed potato production
(total area of a pixel is approx. 85 ha)

Suitable if: Elevation > 1200 m and Slope < 2 %

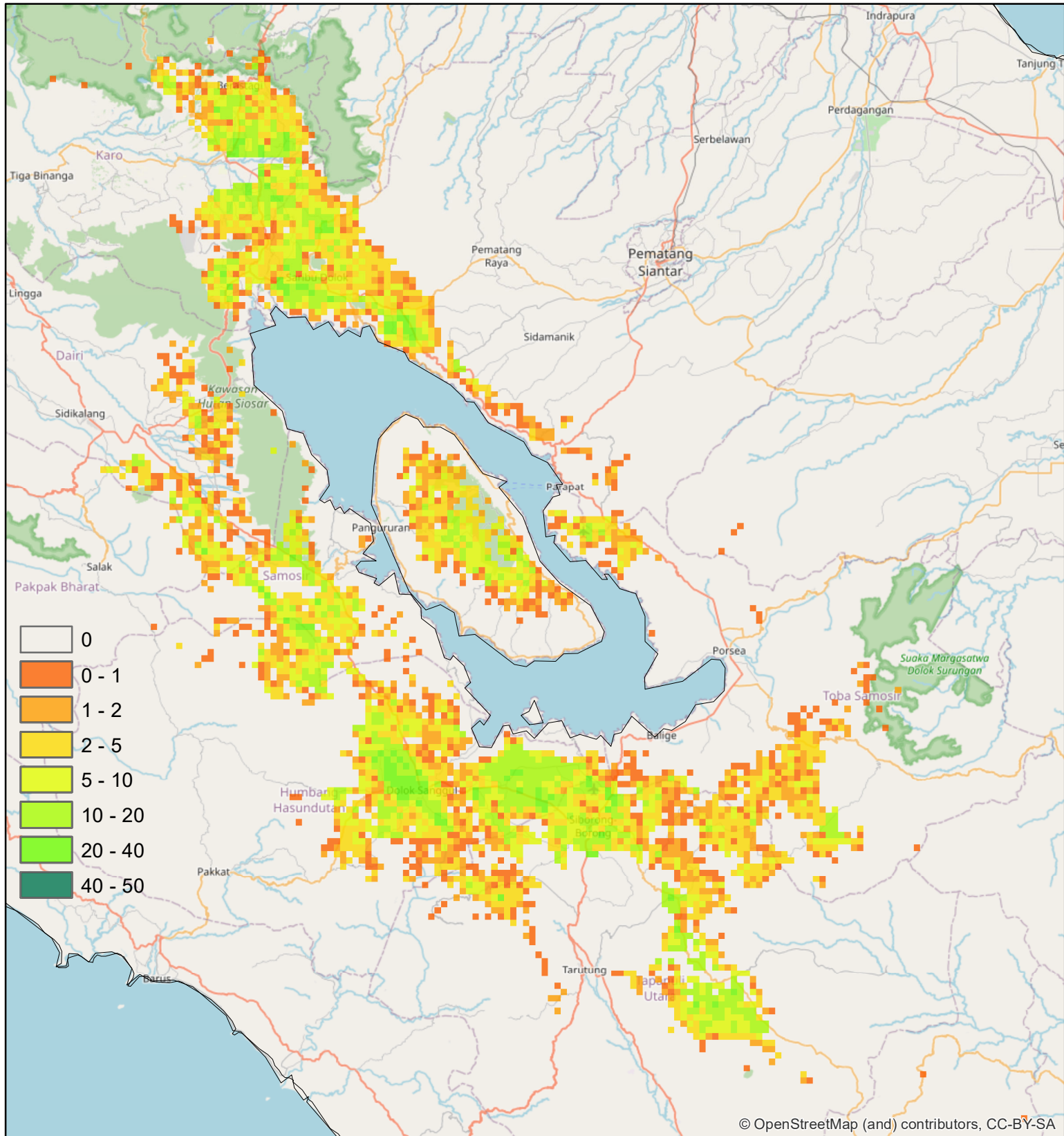
Sulawesi



Current cropland area (ha) per pixel, suitable for seed potato production
(total area of a pixel is approx. 85 ha)

Suitable if: Elevation > 1200 m and Slope < 2%

Part of Sumatra



Current cropland area (ha) per pixel, suitable for seed potato production
(total area of a pixel is approx. 85 ha)

Suitable if: Elevation > 1200 m and Slope < 2%