

Challenges for effective delivery of capacity development: Capacity development for implementation of the Bangladesh Delta Plan 2100

Presentation for the International Symposium on Capacity Development, 27-28 May 2020,

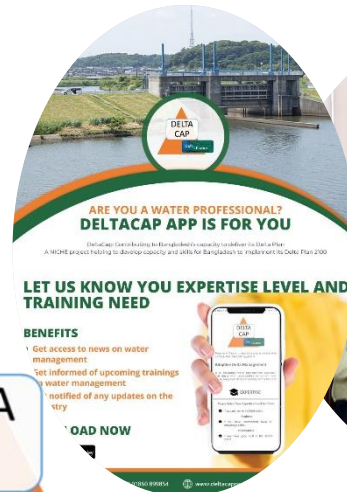
Catharien Terwisscha van Scheltinga, Abu Saleh Khan, Md Shah Alam Khan, Chris Zevenbergen

Catharien.Terwisscha@wur.nl



DELTA
CAP

Delt Alliance
Bangladesh Wing



Overview

- Introduction
- Bangladesh Delta Plan 2100: Capacity needed
- Timeline analysis
- Lessons learned

www.deltacapproject.net



Short bio Catharien Terwisscha van Scheltinga

- Sr Researcher Deltas
- @WUR since 2000
- Team Water & Food, Wageningen Environmental Research
- WUR focal point Delta Alliance
- Coordinator DeltaCap
- DeltaCap is led by IHE



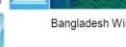
Sponsor and Partners of DeltaCAP



UNESCO-IHE
Institute for Water Education

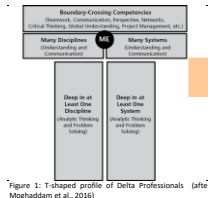
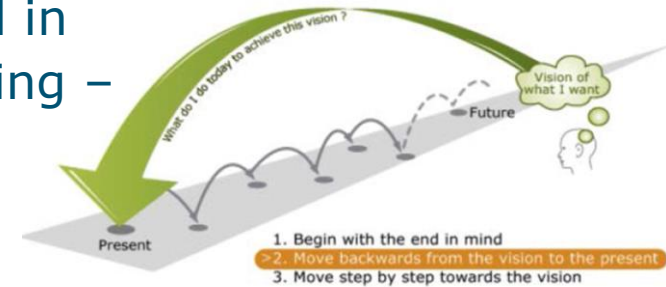


WAGENINGEN
UNIVERSITY & RESEARCH



Bangladesh Delta Plan 2100 and capacity needed

- Strategic, holistic plan: starting with the end in mind. Adaptive delta management (forecasting – back-casting)
- Need for capacity, e.g.
 - longer term planning / integrated assessment;
 - multiple stakeholder involvement/innovative collaboration;
 - participatory water management – local level information services
 - national level information services – knowledge portal



T shaped competency profile for delta professional



Timeline

2010

2012

2014

2016

2018

2020

Phase 0 Orientation

Does BD need a delta plan, and if so, how should it look like?

MoU BD-NL

Phase 1 Development

Focus

Delta Vision,
Mission, Goals
and Strategies

Capacity Development needs

ADM concept &
principles

Phase 2 Interbellum

Phase 3 Implementation

Focus

Capacities,
Projects, Monitoring
& Evaluation

Capacity Development needs

Specific skills,
knowledge & tools

DeltaCAP

Delta Centre

Training, online platform

Assess CD needs, app



Lessons learned

1. Capacity development for adaptive delta management: Highly uncertain and no linear planning possible
2. The focus changed from delta plan formulation to implementation – and so did the capacity needs
3. Good experience working in parallel tracks: institutional process delta centre, training, and support services

