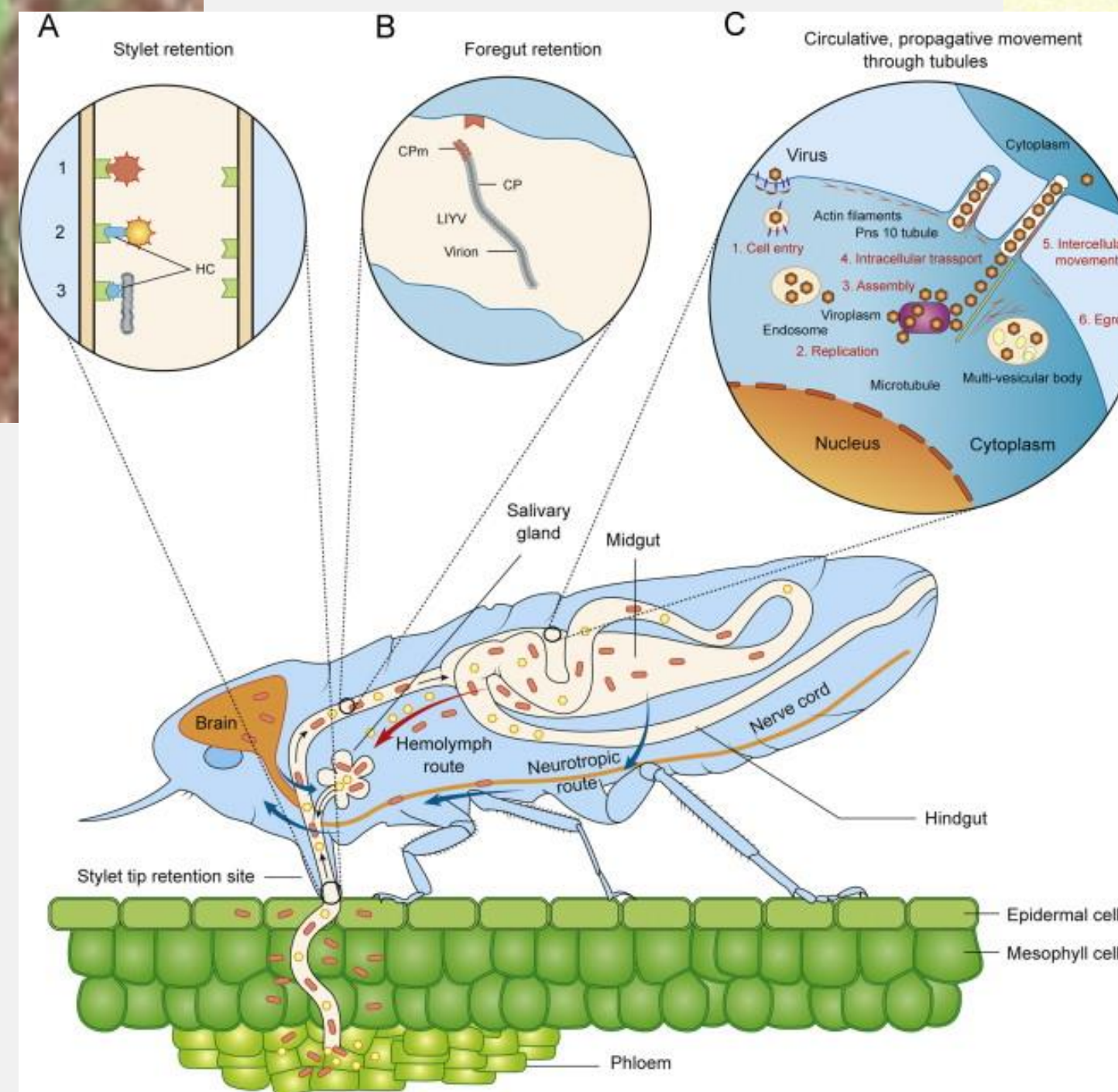
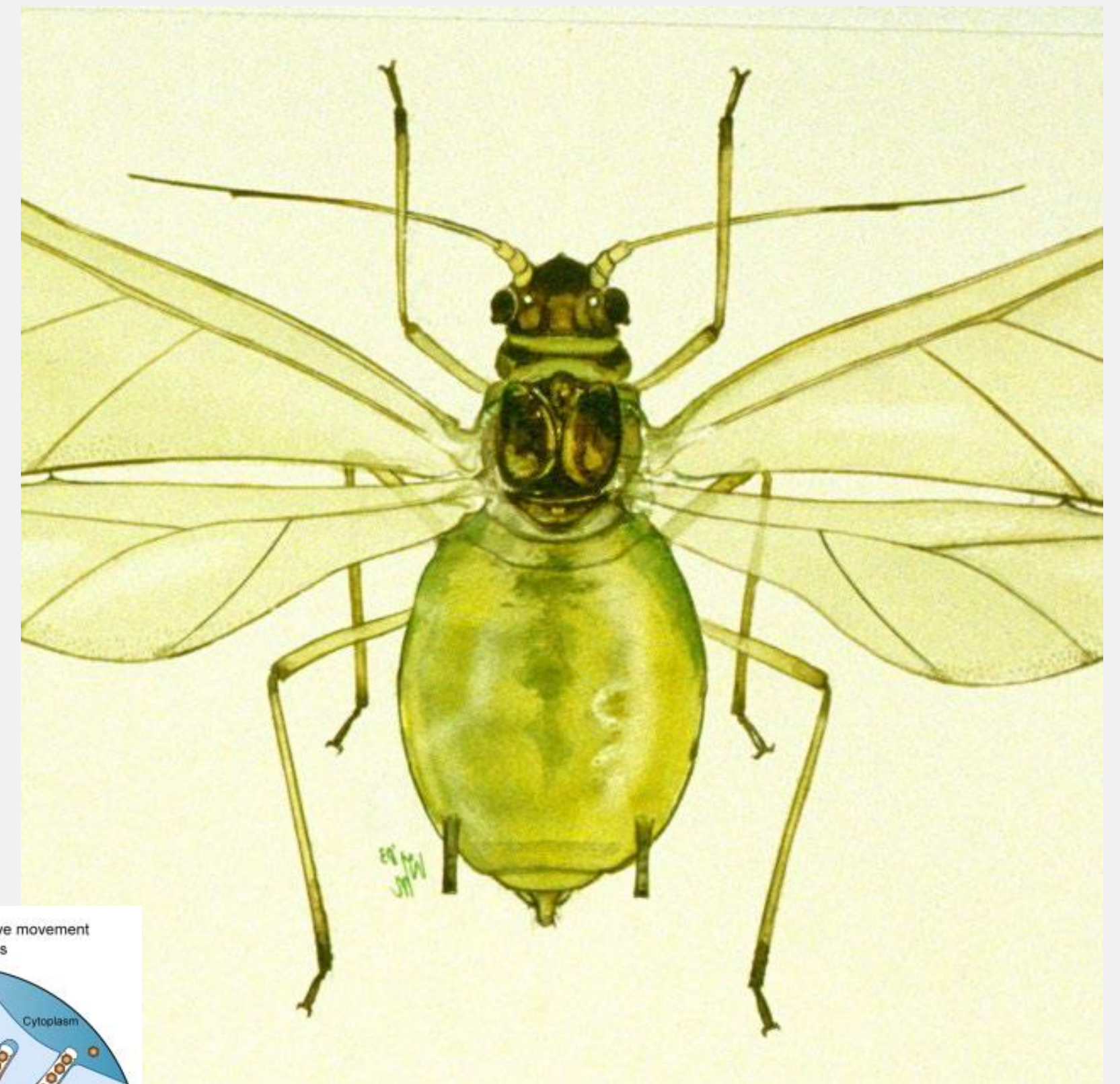


VIRUSPROBLEMATIEK IN POOT AARDAPPELEN

3 maart 2019

VIRUSOVERDRACHT DOOR BLADLUIZEN



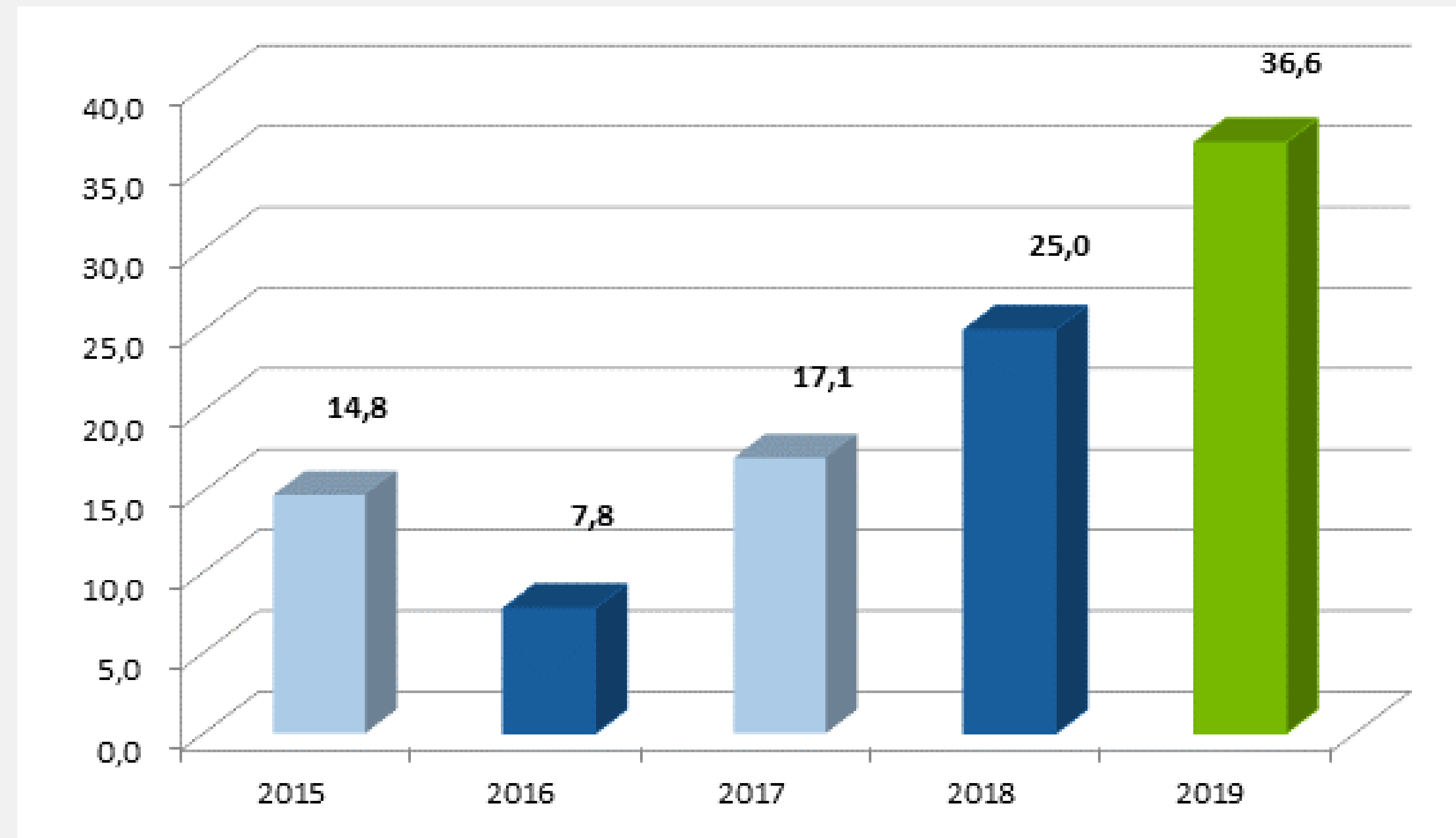
FINANCIËLE SCHADE DOOR DECLASSERING

Korte termijn

- Traditionele markten
 - (Importeis klasse E)
 - (markt klasse A beperkt)

Langere termijn

- Niet meer uitplantgeschikt
- Gat in de opbouw van ras
- Niet gewenste areaal

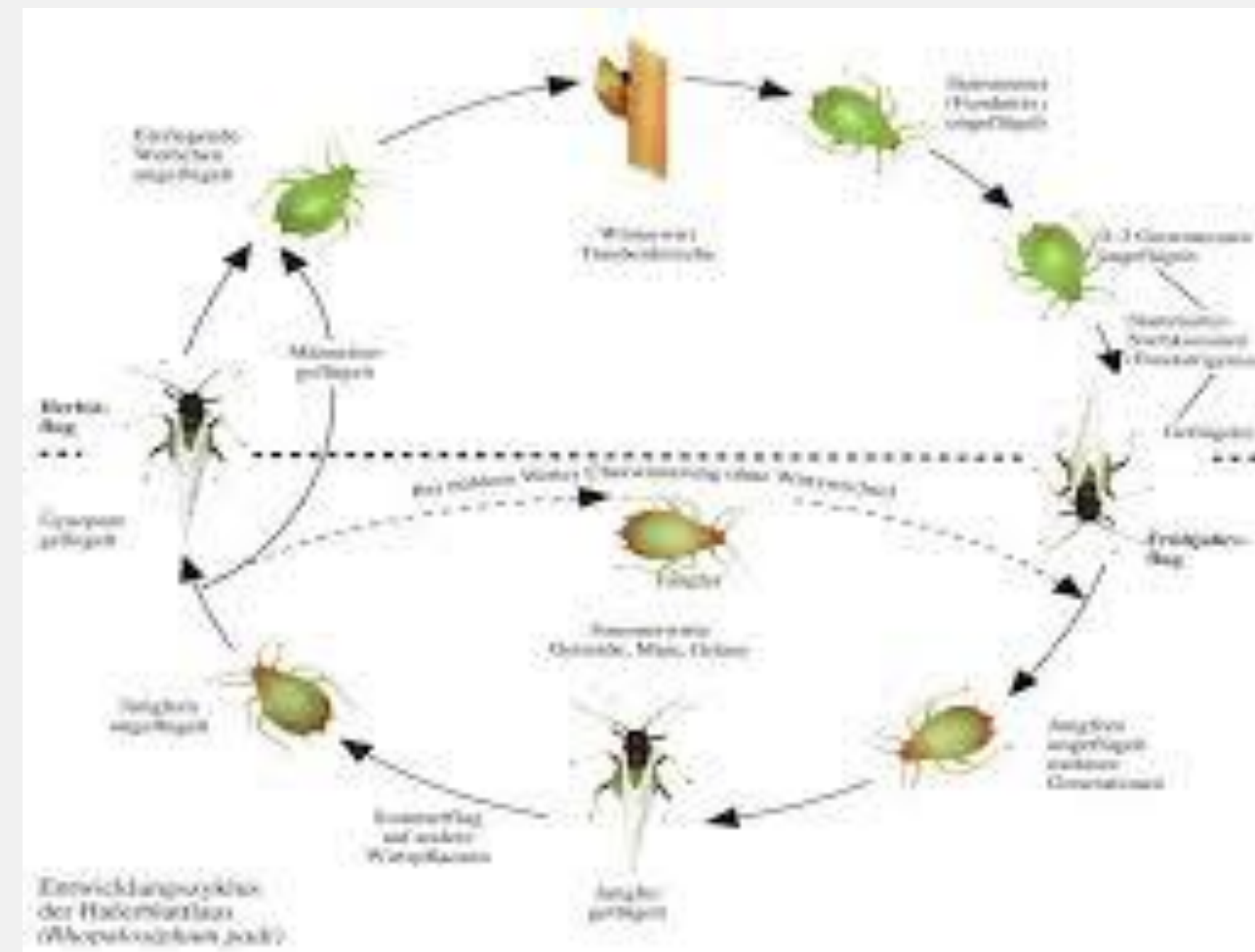


TOENAME VIRUSDruk

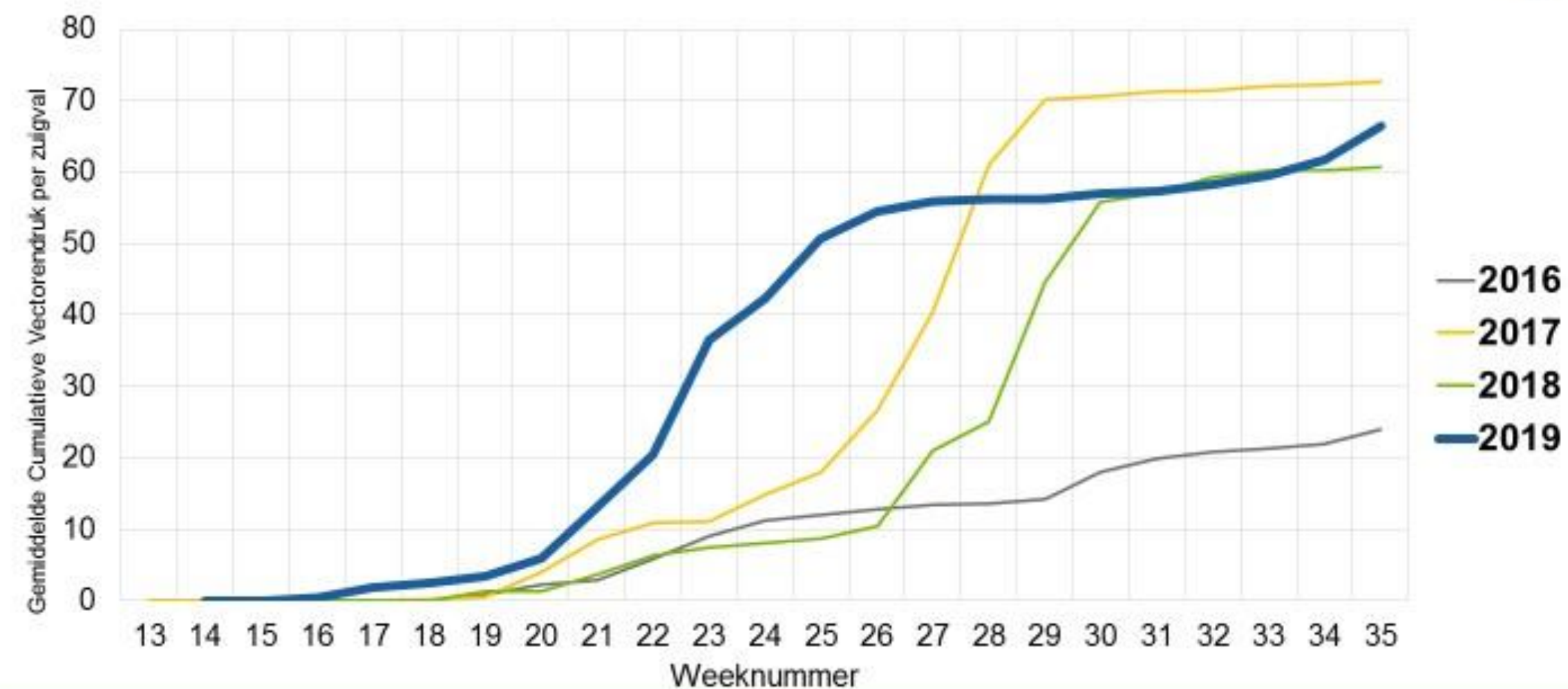
Toename luizendruk (vectorendruk)

Klimaat













- Warme winters
- Voorjaarsvluchten



Cumulative vectorendruk (zuigval)



ONTWIKKELINGEN ZIEKTEDRUK

FACTOR	2020	2025-2030
Middelenbeleid		
Luizendruk		
Schaalvergroting telers		
Gewassen (te) lang op het veld		
Resistente rassen		
Aantal veldgeneraties		

MEER KENNIS GEWENST

- Meer handvaten nodig om virus te controleren
- PPS Virus en vectorbeheersing
 - Historische data van vroege luisvluchten
 - Wijze van monitoring van luizen (vangbak, zuigval, fuik)
 - Aantonen besmetting Y-virus in de luis
 - Bronnen van Y-virus in omgeving (andere waarden dan aardappel)