

Associations of Abdominal Skeletal Muscle Mass, Fat Mass, and Mortality among Men and Women with Stage I-III Colorectal Cancer

Citation for published version (APA):

van Baar, H., Winkels, R. M., Brouwer, J. G. M., Posthuma, L., Bours, M. J. L., Weijenberg, M. P., Boshuizen, H. C., Van Zutphen, M., van Duijnhoven, F. J. B., Kok, D. E., Wesselink, E., Slooter, G. D., Bilgen, E. J. S., Hansson, B. M. E., de Wilt, J. H. W., Kampman, E., & Beijer, S. (2020). Associations of Abdominal Skeletal Muscle Mass, Fat Mass, and Mortality among Men and Women with Stage I-III Colorectal Cancer. *Cancer Epidemiology Biomarkers & Prevention*, 29(5), 956-965. <https://doi.org/10.1158/1055-9965.epi-19-1134>

Document status and date:

Published: 01/05/2020

DOI:

[10.1158/1055-9965.epi-19-1134](https://doi.org/10.1158/1055-9965.epi-19-1134)

Document Version:

Publisher's PDF, also known as Version of record

Document license:

Taverne

Please check the document version of this publication:

- A submitted manuscript is the version of the article upon submission and before peer-review. There can be important differences between the submitted version and the official published version of record. People interested in the research are advised to contact the author for the final version of the publication, or visit the DOI to the publisher's website.
- The final author version and the galley proof are versions of the publication after peer review.
- The final published version features the final layout of the paper including the volume, issue and page numbers.

[Link to publication](#)

General rights

Copyright and moral rights for the publications made accessible in the public portal are retained by the authors and/or other copyright owners and it is a condition of accessing publications that users recognise and abide by the legal requirements associated with these rights.

- Users may download and print one copy of any publication from the public portal for the purpose of private study or research.
- You may not further distribute the material or use it for any profit-making activity or commercial gain
- You may freely distribute the URL identifying the publication in the public portal.

If the publication is distributed under the terms of Article 25fa of the Dutch Copyright Act, indicated by the "Taverne" license above, please follow below link for the End User Agreement:

www.umlib.nl/taverne-license

Take down policy

If you believe that this document breaches copyright please contact us at:

repository@maastrichtuniversity.nl

providing details and we will investigate your claim.

Associations of Abdominal Skeletal Muscle Mass, Fat Mass, and Mortality among Men and Women with Stage I–III Colorectal Cancer



Harm van Baar¹, Renate M. Winkels¹, Jesca G.M. Brouwer¹, Liesbeth Posthuma¹, Martijn J.L. Bours², Matty P. Weijenberg², Hendriek C. Boshuizen¹, Moniek van Zutphen¹, Fränzel J.B. van Duijnhoven¹, Dieuwertje E. Kok¹, Evertine Wesselink¹, Gerrit D. Slooter³, Ernst J. Spillenaar Bilgen⁴, Birgitta M.E. Hansson⁵, Johannes H.W. de Wilt⁶, Ellen Kampman¹, and Sandra Beijer⁷

ABSTRACT

Background: The associations of abdominal skeletal muscle mass index (SMI), visceral and subcutaneous adipose tissue (VAT and SAT, respectively), and mortality among patients with stage I–III colorectal cancer may differ for men and women, but only few studies stratified their data into men and women. We investigated associations of abdominal SMI, VAT, and SAT with overall mortality among men and among women with stage I–III colorectal cancer.

Methods: SMI, VAT, and SAT were assessed from abdominal CT images for 1,998 patients with stage I–III colorectal cancer diagnosed between 2006 and 2015. Restricted cubic splines (RCS) were used to investigate associations of SMI, VAT, and SAT with overall mortality.

Results: Average age of the participants was 67.9 ± 10.6 years and 58% were men. During a median follow-up of 4.3 years, 546

(27%) patients died. Among men, the association of SMI and mortality was statistically significant in a nonlinear way in the RCS analyses, with lower SMI levels associated with higher mortality. SMI was not associated with mortality among women. SAT was associated with mortality in a nonlinear way for men and for women, with lower SAT levels being associated with higher mortality. VAT was not significantly associated with mortality in men or women.

Conclusion: Associations of abdominal skeletal muscle mass with mortality among patients with colorectal cancer were not the same for men and for women.

Impact: This study stresses the importance for more attention on sex-related differences in body composition and cancer outcomes.

Introduction

Colorectal cancer is one of the most common malignancies worldwide, with over 1.8 million new cases in 2018 (1). Various studies have investigated associations of abdominal skeletal muscle mass, amount of visceral adipose tissue (VAT) or subcutaneous adipose tissue (SAT), and mortality among patients with colorectal cancer (2–18), but up till now, the results are inconsistent. This inconsistency has several reasons. First, studies included a mix of patients with stage I–III and stage IV colorectal cancer. Five-year survival rate of patients with stage I–III colorectal cancer is generally above 70%, whereas in patients with stage IV colorectal cancer, this is generally less than 15% (19). Severe weight loss and muscle wasting (cachexia) are highly prevalent among

patients with stage IV cancer, due to metabolic alterations induced by the tumor (20). Among patients with stage I–III cancer, cachexia is less common; thus, low skeletal muscle mass is more likely to be related to aging and/or a sedentary lifestyle. Analyses on body composition and mortality should therefore not include combined populations of stage I–III and stage IV patients.

A second possible explanation for the inconsistent results is the use of inappropriate cutoff values to identify patients with a low or high abdominal muscle or fat mass. When it comes to patients with stage I–III colorectal cancer, five studies investigated the association of low abdominal skeletal muscle mass and mortality all using different cutoff values for low skeletal muscle mass: the used cutoffs ranged from <31.6 to <46.6 cm^2/m^2 for women and <43 to <54.3 cm^2/m^2 for men (9–12, 17). An Asian ($n = 220$), a Canadian ($n = 968$), and a large U.S. study ($n = 3,262$; refs. 10, 12, 17) reported a significant association between low abdominal skeletal muscle mass and higher mortality, while in two European studies ($n = 816$ and $n = 339$; refs. 9, 11), low abdominal skeletal muscle mass was not associated with higher mortality. Both European studies used cutoff levels for low skeletal muscle mass as defined by U.S. or Canadian cohorts (12, 14). As noted by others (21, 22), the cutoff levels for low abdominal skeletal muscle mass as defined in U.S./Canadian populations might not be appropriate for European populations.

VAT is known to be associated with chronic, low-grade inflammation, and a higher risk of worse cardiovascular outcomes (23, 24). So far there is no convincing evidence that VAT is also associated with mortality among patients with stage I–III colorectal cancer (11, 12, 15–18). A relatively small study ($n = 62$; ref. 15) reported a statistically significant association of high VAT with increased overall mortality among patients receiving adjuvant chemotherapy. Four other studies observed no clear associations between low or high VAT

¹Division of Human Nutrition and Health, Wageningen University & Research, Wageningen, the Netherlands. ²Department of Epidemiology, GROW School for Oncology and Developmental Biology, Maastricht University, Maastricht, the Netherlands. ³Department of Surgery, Maxima Medical Centre, Veldhoven, the Netherlands. ⁴Department of Surgery, Rijnstate Hospital, Arnhem, the Netherlands. ⁵Department of Surgery, Canisius Wilhelmina Hospital, Nijmegen, the Netherlands. ⁶Department of Surgery, Radboud Universitair Medisch Centrum, Nijmegen, the Netherlands. ⁷Department of Research & Development, Netherlands Comprehensive Cancer Organisation (IKNL), Utrecht, the Netherlands.

Note: Supplementary data for this article are available at Cancer Epidemiology, Biomarkers & Prevention Online (<http://cebp.aacrjournals.org/>).

Corresponding Author: Renate Winkels, Wageningen University & Research, PO Box 17, Wageningen 6700 AA, the Netherlands. Phone: 31-317-485489; E-mail: renate.winkels@wur.nl

Cancer Epidemiol Biomarkers Prev 2020;29:956–65

doi: 10.1158/1055-9965.EPI-19-1134

©2020 American Association for Cancer Research.

Skeletal Muscle Mass, Fat Mass, and Mortality in CRC Patients

and mortality (11, 12, 16, 17). One study determined a cutoff value for high VAT using optimal stratification (17), two studies used tertiles (11, 12), and one study applied a median split (16) to categorize VAT. All these categorizations are relatively crude, and these four studies may have failed to detect an association as a result of these crude categorizations. A sixth study used cubic splines to investigate the association of VAT and mortality (18) and observed a nonlinear association between VAT and mortality.

Compared with VAT, SAT contains a lower number of inflammatory and immune cells and is considered to be a less active fat tissue than VAT (25). Three studies (11, 12, 18) reported on the association of abdominal SAT and mortality among patients with stage I–III colorectal cancer exclusively. Two studies did not observe significant associations while using tertiles to categorize SAT. Again, Brown and colleagues (18) observed a nonlinear association between SAT and mortality using restricted cubic splines. This shows that dose–response analyses using restricted cubic spline (RCS) functions (26) could help identify possible linear or nonlinear associations of VAT and SAT with mortality that might be missed when categorizing muscle or adipose tissue variables.

Another possible explanation for inconsistent results on associations of body composition and survival could be that not all studies stratified their data into men and women. Body composition differs between men and women, with men generally having more VAT and higher muscle mass, and women generally having more SAT and lower

muscle mass (27). Age-related changes in skeletal muscle structure, function, and metabolism differ between men and women, possibly mediated by sex hormones (28). Sex differences in body fat distribution might account for differences in inflammatory markers between men and women (29). Currently, there is a gap in literature on whether these sex-based differences in body composition have an impact on the association between body composition and mortality in patients with cancer. Of the previous studies among patients with stage I–III colorectal cancer (9–12, 15–18), only two studies (both in the same dataset: men $n = 1,634$, women $n = 1,628$; refs. 12, 18) stratified their data by sex. The stratified analyses suggest that associations of abdominal skeletal muscle mass, VAT, and SAT with mortality differ between men and women.

The aim of this study was to investigate the associations of abdominal skeletal muscle mass, VAT, and SAT with overall mortality among men and among women with stage I–III colorectal cancer.

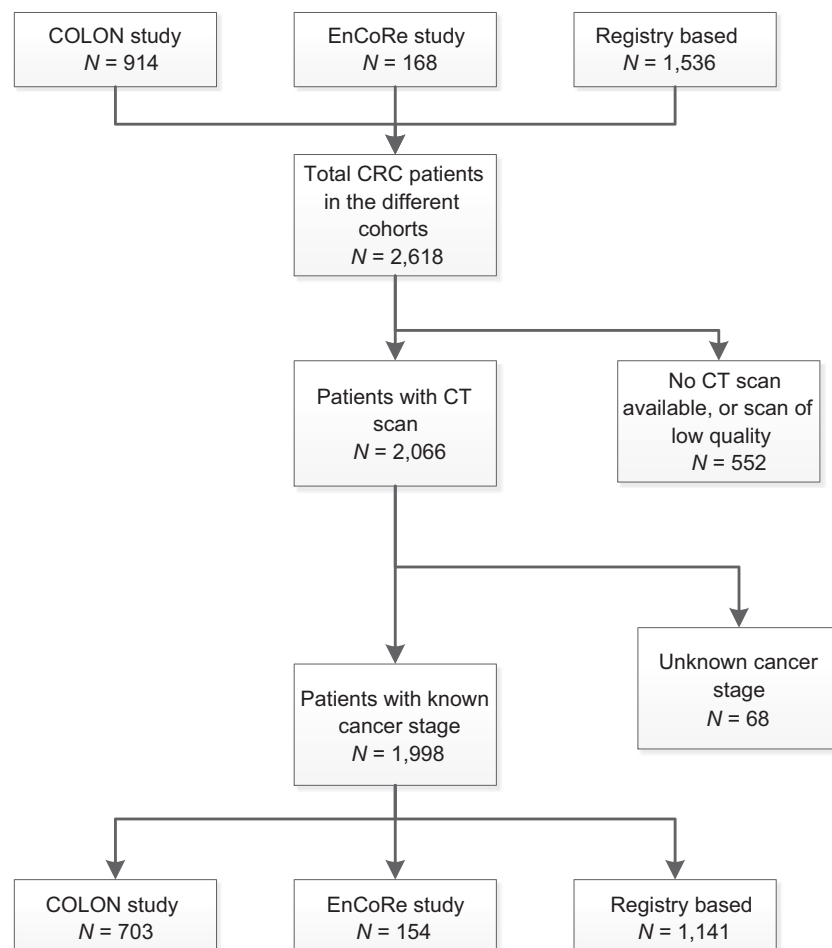
Materials and Methods

Population

For this study, data of two ongoing prospective cohort studies among patients with colorectal cancer, the COLON (30) and EnCoRe (31) study, were combined with registry-based data, as described previously (32). Briefly, for the COLON study, participants were recruited between August 2010 and January 2016; for the EnCoRe

Figure 1.

Flowchart for inclusion of patients with stage I–III colorectal cancer in an observational study on body composition and mortality.



study, participants were recruited between April 2012 and September 2015; and for the registry-based data, the Netherlands Cancer Registry was used to select all patients with stage I–III colorectal cancer diagnosed between 2007 and 2010 in three hospitals. Patients had to be diagnosed with stage I–III colorectal cancer to be eligible for the current analysis. Additional exclusion criteria for the present analyses were missing CT image, CT images of poor quality, or missing data on stage of disease (see Fig. 1). Only pretreatment CT images assessed within 3 months of diagnosis were considered representative for body composition at diagnosis. Patients with a CT image assessed after treatment or outside this time period were excluded from analyses.

The study was performed in accordance with the Declaration of Helsinki. The COLON study (ClinicalTrials.gov Identifier:

NCT03191110) was approved by the Committee on Research involving Human Subjects, region Arnhem-Nijmegen, the Netherlands. The EnCoRe study (Netherlands Trial register number 7099) was approved by the Medical Ethics Committee of the University Hospital Maastricht and Maastricht University (Maastricht, the Netherlands). All participants of the COLON and EnCoRe study provided written informed consent. According to the Central Committee on Research involving Human Subjects (CCMO), studies using the data of the Netherlands Cancer Registry do not require approval from an ethics committee in the Netherlands. The study was approved by the Privacy Review Board of the Netherlands Cancer Registry. In addition, the ethical committees of the three participating hospitals gave permission to use additional data from CT images.

Table 1. Baseline characteristics of patients with stage I–III colorectal cancer in an observational study on body composition and mortality.

	Total population (n = 1,998)	Women (n = 832) (42%)	Men (n = 1166) (58%)
Demographic characteristics			
Age [y, mean (SD)]	67.9 (10.6)	67.8 (11.6)	68.0 (9.8)
Follow-up time [months, median (IQR range)]	51 (28–79)	54 (29–82)	49 (27–77)
Deceased patients [n (%)]	546 (27)	223 (27)	323 (28)
Study [n (%)]			
Prospective	857 (43)	323 (39)	534 (46)
Registry-based	1,141 (57)	509 (61)	632 (54)
Clinical characteristics			
Cancer stage [n (%)]			
I	478 (24)	203 (24)	275 (23)
II	691 (35)	281 (34)	410 (35)
III	829 (42)	348 (42)	481 (41)
Tumor location [n (%)] ^a			
Colon	1,303 (67)	595 (74)	708 (62)
Rectal	648 (33)	214 (27)	434 (38)
Number of comorbidities [n (%)] ^b			
0	622 (33)	288 (37)	334 (30)
1	474 (25)	209 (27)	265 (24)
≥2	796 (42)	292 (37)	505 (43)
Neoadjuvant or adjuvant treatment			
Radiotherapy [n (%)] ^c			
No	1,395 (74)	616 (74)	779 (71)
Yes	488 (26)	173 (21)	315 (29)
Chemotherapy [n (%)] ^d			
No	1,401 (73)	581 (72)	820 (74)
Yes	510 (27)	221 (28)	289 (26)
Body composition			
BMI [kg/m ² , n (%)] ^e			
<20	67 (4)	44 (6)	23 (2)
20–24.9	629 (37)	278 (40)	351 (30)
25–29.9	728 (42)	254 (31)	474 (47)
≥30	295 (17)	124 (15)	171 (17)
Visceral adipose tissue [cm ² , median (IQR range)]	145 (76–219)	93 (47–150)	186 (117–260)
Subcutaneous adipose tissue [cm ² , median (IQR range)]	156 (112–215)	189 (137–256)	136 (105–183)
Skeletal muscle index [cm ² /m ² , mean (SD)]	46.8 (8.8)	40.4 (5.9)	51.3 (7.7)
Skeletal muscle radiodensity [HU, mean (SD)]	34.2 (9.3)	32.0 (10.0)	35.7 (8.5)

Abbreviations: BMI, body mass index; HU, Hounsfield unit.

^aTumor location data of 47 patients missing.

^bComorbidity data of 106 patients missing.

^cRadiotherapy data of 115 patients missing.

^dChemotherapy data of 87 patients missing.

^eBMI data of 279 patients missing.

Skeletal Muscle Mass, Fat Mass, and Mortality in CRC Patients

Body composition

Skeletal muscle, VAT, and SAT cross-sectional areas were quantified on CT images at the level of the third lumbar vertebrae with the use of Slice-O-Matic software version 5.0 (Tomovision). Standard radiodensity thresholds, measured in Hounsfield units (HU), were used to quantify the cross-sectional areas of VAT, SAT, and skeletal muscle. Threshold values were between -150 and -50 HU for VAT, between -190 and -30 HU for SAT, and between -29 and +150 HU for skeletal muscle (33, 34). The skeletal muscle cross-sectional area (cm^2) was adjusted for height (cm^2/m^2) to calculate the skeletal muscle index (SMI). Skeletal muscle radiodensity (32) was assessed as the mean radiographic density of the total skeletal muscle cross-sectional area. Total adipose tissue (TAT) was calculated as the sum of VAT and SAT.

Medical history and mortality

For both the COLON and EnCoRe study, data on age, sex, type of cancer, stage of disease, comorbidities, and date of surgery were collected from medical records. For the registry-based dataset, these data were retrieved from the Netherlands Cancer Registry. Mortality data (i.e., vital status and date of death) were retrieved from the Municipal Personal Records Database.

Statistical analyses

Demographic and clinical characteristics are presented as median and interquartile range (IQR) for continuous variables that were not

normally distributed (SMI, VAT, SAT, and follow-up time). Mean and SD are presented for continuous variables that followed a normal distribution. Frequency and percentages are presented for categorical variables.

RCS analyses (26) were used to investigate associations of SMI, VAT, and SAT with mortality, and to assess whether associations were non-linear. Knots were placed at the 5th, 50th, and 95th percentiles of SMI, VAT, or SAT. HRs for the RCS analyses were calculated using the median as the reference. All analyses were stratified into men and women. On the basis of literature, the RCS analyses for abdominal SMI, VAT, and SAT were adjusted for age and stage of the disease. Other variables, that is, tumor location (colon or rectum), number of comorbidities (0, 1, or ≥ 2), neoadjuvant and/or adjuvant treatment (chemotherapy yes or no, radiotherapy yes or no), cohort (COLON or EnCoRe or registry-based), height (continuous, in the VAT and SAT analyses), skeletal muscle radiodensity (continuous), SMI (continuous, in the VAT and SAT analyses), VAT (continuous, in the SMI and SAT analyses), SAT (continuous, in the SMI and VAT analyses), and TAT (continuous, in the SMI analyses) were included in the final models if they changed the HR for mortality in any of the models with at least 10% when the potential confounder was individually added to the model. On the basis of these analyses, skeletal muscle radiodensity, SMI, chemotherapy, and radiotherapy were identified as confounding variables. Additional to the RCS plots, HRs with 95% confidence intervals for specific SMI, VAT, and SAT values were calculated using the RCS analyses.

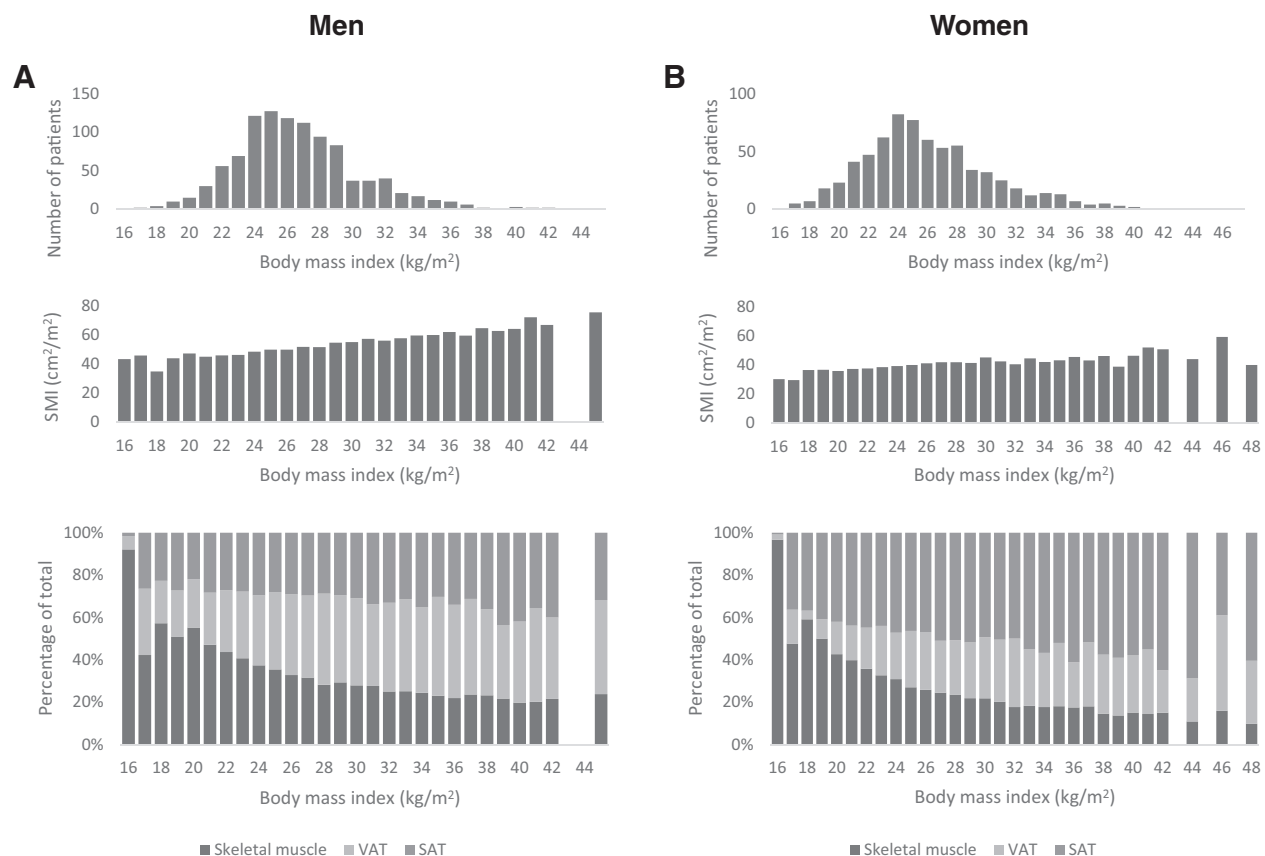


Figure 2.

Top, number of patients per BMI category. Middle, mean absolute values of skeletal muscle index (SMI) per BMI category among men (A) and women (B). Bottom, mean relative distribution of skeletal muscle, VAT, and SAT by BMI categories among men (A) and women (B).

van Baar et al.

A sensitivity analysis was performed excluding all patients who died within 30 days of surgery, as those patients most likely died due to postoperative complications.

Overall mortality was defined as number of days between date of the CT image and date of death or January 31, 2017. Patients still alive on this date were censored in the survival analyses.

Level of significance was set at 0.05. Analyses were performed using IBM SPSS Statistics software (version 23.0, SPSS Inc.) and SAS software (version 9.4, SAS Institute Inc.).

Results

In total, 2,618 eligible patients with colorectal cancer were identified; 552 of them were excluded because no suitable CT image was available, and 68 were excluded due to missing stage of disease

data (Fig. 1). The final dataset consisted of 1,998 patients; 703 of them were participants from the COLON study, 154 were participants from the EnCoRe study, and 1,141 came from the registry-based dataset (Supplementary Table S2 describes baseline characteristics of the separate cohorts).

Table 1 shows the demographic and clinical characteristics for the total study population. The average age of the included patients was 67.9 ± 10.6 years, 58% of the patients were men, and 33% of the patients were diagnosed with rectal cancer. The majority of the patients were diagnosed with stage III of the disease (42%). Forty-two percent of the population was overweight (BMI 25–30 kg/m²), and 17% was obese (BMI ≥ 30 kg/m²). On average, men had more VAT and SMI and less SAT than women. The median follow-up time was 51 months and during this period, 546 (27%) patients died.

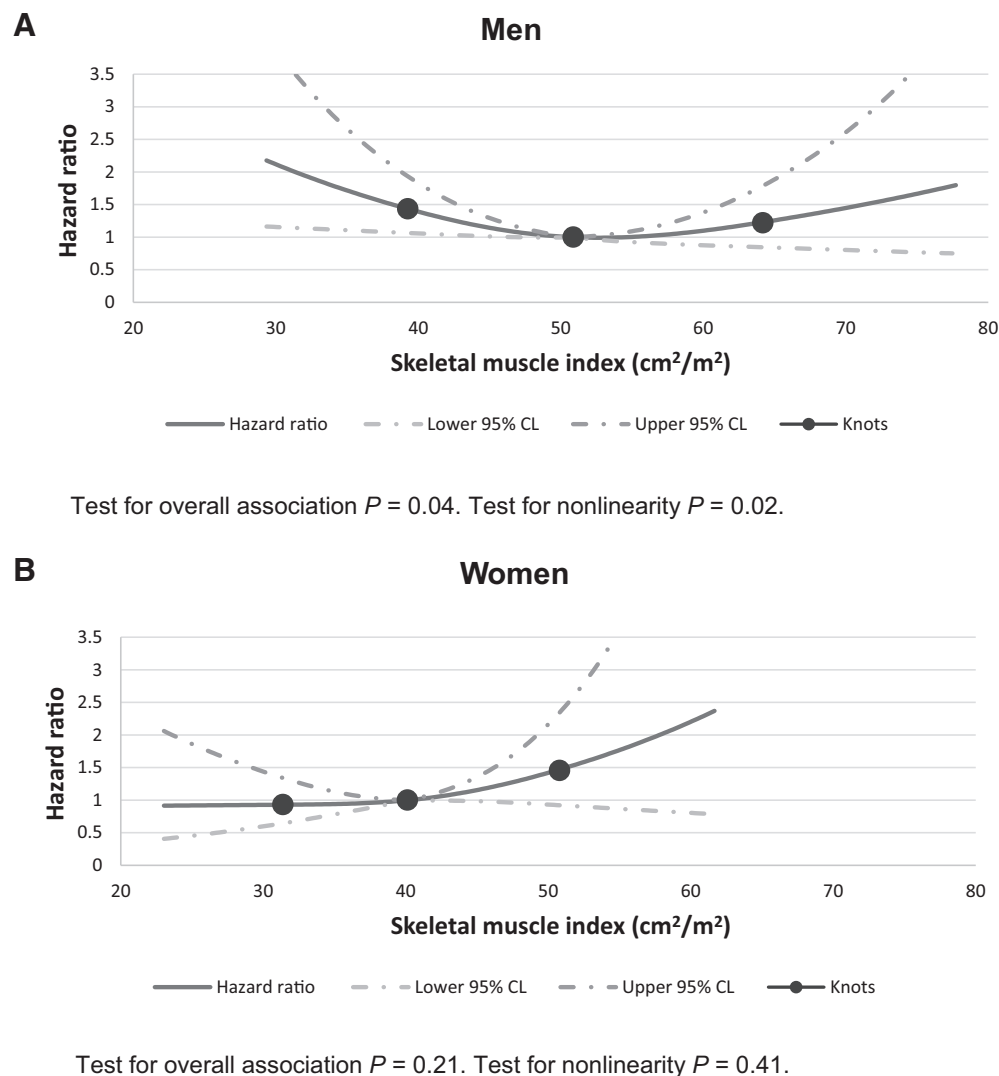


Figure 3.

The association of SMI and mortality among patients with colorectal cancer stratified into men (A) and women (B), adjusted for age and stage of disease, radiotherapy, chemotherapy, and skeletal muscle density with three knots located at the 5th, 50th (reference), and 95th percentiles of the distribution of SMI.

Skeletal Muscle Mass, Fat Mass, and Mortality in CRC Patients

Table 2. Estimated hazard ratios for specific SMI, VAT, and SAT values and mortality, with median values as the reference category (i.e., for skeletal muscle index: men 50.8 cm²/m², women 40.2 cm²/m²; for visceral adipose tissue: men 185.6 cm², women 93.3 cm²; for subcutaneous adipose tissue: men 136.4 cm², women 188.3 cm²).

Men		Women	
HR (95% CI)		HR (95% CI)	
SMI (cm ² /m ²) ^a		SMI (cm ² /m ²) ^a	
40	1.39 (1.06-1.83)	30	0.93 (0.60-1.44)
45	1.15 (1.01-1.30)	35	0.94 (0.78-1.13)
50	1.01 (1.00-1.02)	40	1.00 (0.99-1.00)
55	1.00 (0.92-1.09)	45	1.15 (0.98-1.36)
60	1.10 (0.88-1.38)	50	1.42 (0.93-2.16)
VAT (cm ²) ^b		VAT (cm ²) ^b	
100	1.16 (0.97-1.38)	50	1.05 (0.85-1.30)
150	1.05 (0.99-1.11)	100	1.00 (0.97-1.02)
200	0.99 (0.97-1.01)	150	1.00 (0.87-1.16)
250	0.99 (0.92-1.08)	200	1.06 (0.81-1.38)
300	1.04 (0.88-1.23)	250	1.14 (0.72-1.80)
SAT (cm ²) ^b		SAT (cm ²) ^b	
50	2.12 (1.49-3.01)	100	1.44 (1.09-1.90)
100	1.31 (1.16-1.48)	150	1.14 (1.03-1.26)
150	0.94 (0.91-0.97)	200	0.98 (0.95-1.00)
200	0.85 (0.74-0.97)	250	0.94 (0.84-1.04)
250	0.89 (0.63-1.17)	300	0.98 (0.81-1.18)

^aAdjusted for age and stage of disease, radiotherapy, chemotherapy, and skeletal muscle density.

^bAdjusted for age and stage of disease, radiotherapy, chemotherapy, skeletal muscle density, and SMI.

Baseline characteristics were similar for included and excluded patients. Of the excluded patients, 59% were men, mean age was 70.6 years, 36% had rectal cancer, and of the excluded patients with stage of disease data available (68%), 26% had stage I disease, 35% stage II, and 40% stage III colorectal cancer.

Distribution of abdominal skeletal muscle, VAT, and SAT by BMI categories among men and women are shown in **Fig. 2**. These figures illustrate that among men, VAT tended to increase with increasing BMI, while for women, SAT tended to increase with increasing BMI. Moreover, the figure shows that with increasing BMI, absolute SMI increased, but more so among men than among women.

In the RCS analyses, SMI was associated with mortality in a nonlinear way among men ($P = 0.04$), but no significant association between SMI and mortality was observed for women ($P = 0.21$; **Fig. 3A and B**). **Table 2** shows estimated HRs for specific SMI values and illustrates that among men, lower levels of SMI were significantly associated with higher mortality but that among women, no statistically significant associations are apparent.

For VAT, the RCS analyses showed that VAT was not significantly associated with mortality either in men ($P = 0.21$), or in women ($P = 0.79$; **Fig. 4A and B**).

The RCS analyses for SAT showed that among men and among women, SAT was associated in a nonlinear way with mortality ($P < 0.01$ and $P = 0.02$, respectively; **Fig. 5A and B**). **Table 2** shows that SAT levels below the median were associated with higher mortality in both men and women.

Sensitivity analyses excluding all patients who died within 30 days postsurgery ($n = 41$) did not substantially alter the shape of any of the splines (Supplementary Figs. S1-S3; Supplementary

Table S1). However, the results for the analyses for SMI among men no longer reached statistical significance ($P = 0.10$).

Discussion

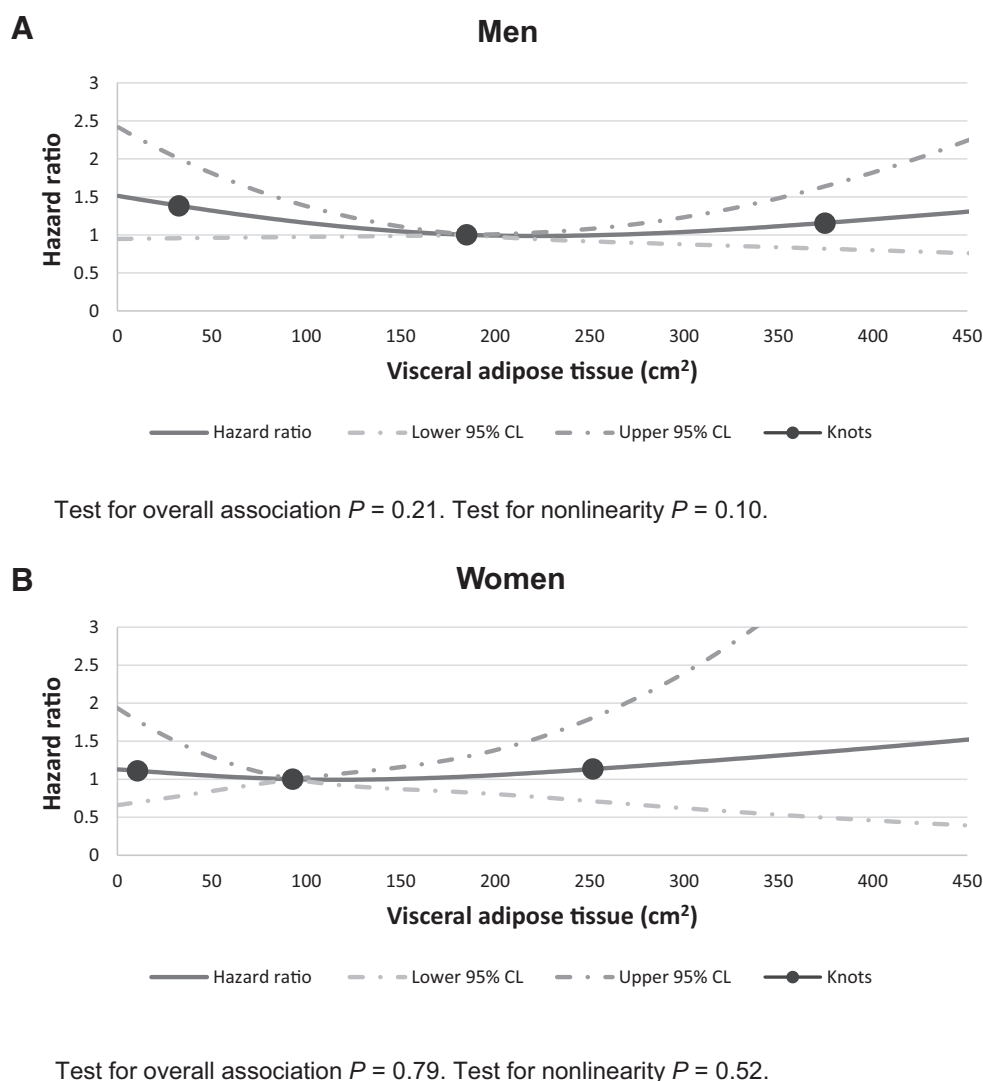
In this study, lower abdominal SMI levels were associated with higher overall mortality among men, but not among women. Lower abdominal SAT levels were associated with higher overall mortality among men and among women. VAT was not associated with overall mortality among men or women.

Our findings that lower abdominal SMI levels were associated with higher mortality among men, but not among women, are in agreement with findings in a U.S. cohort of patients with stage I-III colorectal cancer (12). The splines presented in that paper also show no association between abdominal SMI and mortality among women (P for overall significance of the spline = 0.72), and a significant association among men (P for overall significance of the spline = 0.05). In both the current and the U.S. study, the HR did not increase among women with lower SMI level. Interestingly, in the current study, higher levels of SMI among women were associated with increased risk of mortality, although this was not statistically significant. Because higher SMI levels in general are correlated with higher levels of adipose tissue, one could hypothesize that the higher HR is actually a result of having more adipose tissue. However, adjustment for TAT (or VAT or SAT) did not change this HR and for that reason TAT, VAT, or SAT were not included as possible confounding factors in those analyses. Therefore, the potential higher risk of mortality among women with higher SMI was not explained by having more adipose tissue.

Other studies may have decided not to stratify by sex, because they were too small (9-11). Other cohorts of (healthy) elderly populations found differences between men and women in associations of body composition and mortality although data were not fully consistent (35). Sex-related differences in inflammation levels seen with muscle wasting (36) may be part of the mechanism of why there are sex-related differences in the association of skeletal muscle mass with mortality. In addition, age-related changes in muscle mass have been hypothesized to differ between men and women (28), which could shed further light on why associations with mortality could differ between men and women, but the exact mechanisms remain to be fully elucidated. Our findings stress the importance of the recent increase of attention for sex-related differences in biomedical research (37).

We showed that lower abdominal SAT levels were associated with higher mortality among men and among women with stage I-III colorectal cancer. This is in agreement with a recent study among patients with stage I-III colorectal cancer where splines were used to investigate the association of abdominal SAT and mortality (18). Notably, however, having higher levels of SAT was associated with lower risk of mortality in that study, which is something that we did not observe in our data. A possible explanation for this discrepancy can be that we chose to use the median as reference value in our splines, while the other study elected to use a SAT level of 50 cm² as reference value (18). Moreover, the variation in SAT levels in our study was lower in our cohort than in the published study: in our study, 95% of the men had a SAT level below 272.1 cm² and 95% of the women had a SAT level below 398.4 cm² while a substantial number of participants had SAT levels above 400 cm² in the other published study. This lower range of SAT values in our study is the result of a lower average BMI in the population in the Netherlands, relative to the BMI distribution in

van Baar et al.

**Figure 4.**

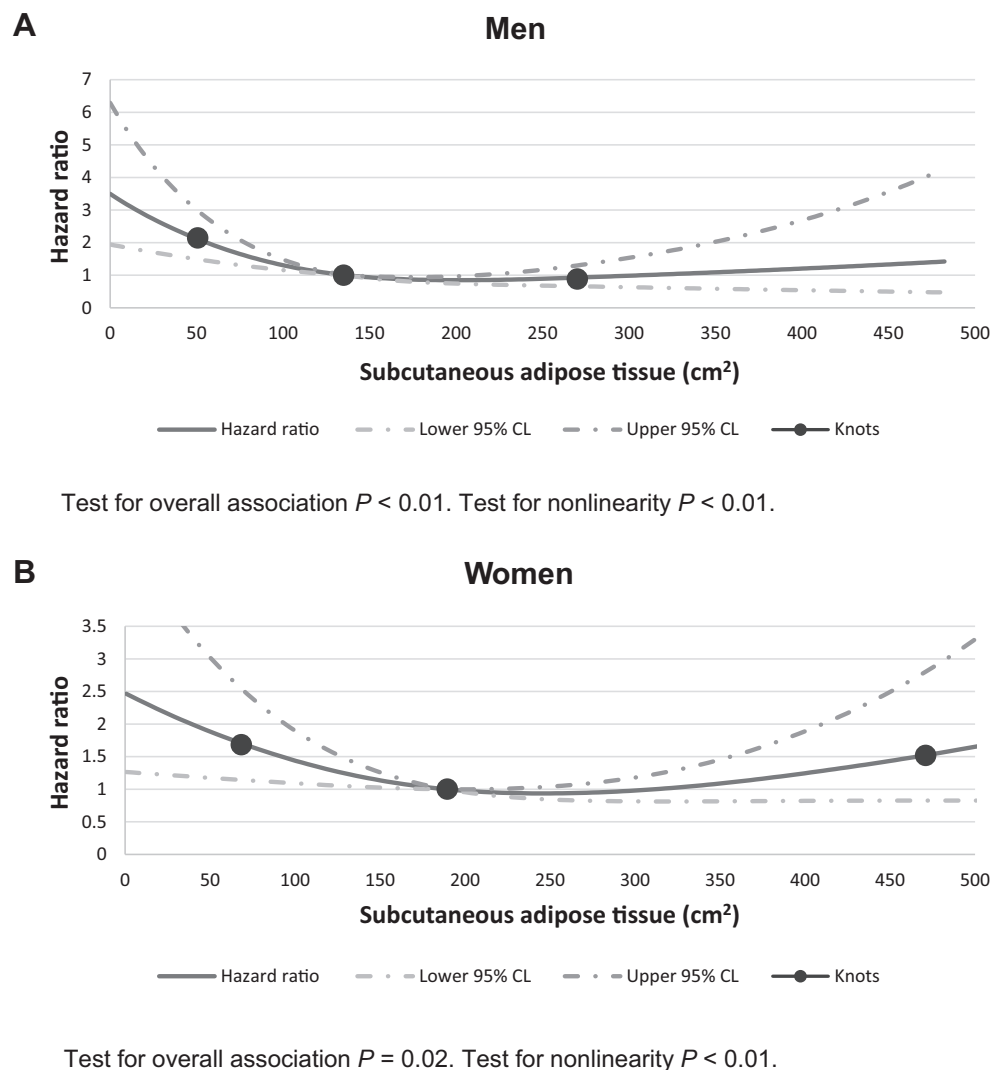
The association of VAT and mortality among patients with colorectal cancer stratified into men (**A**) and women (**B**), adjusted for age and stage of disease, radiotherapy, chemotherapy, skeletal muscle density, and skeletal muscle index with three knots located at the 5th, 50th (reference), and 95th percentiles of the distribution of VAT.

the United States (38). As a result, we had less statistical power to detect associations, especially for SAT values, in the upper/high range.

Our results for abdominal SAT are not in agreement with analyses in a cohort of patients with colorectal cancer from the United States (12). In that analysis, no associations were observed for abdominal SAT and mortality. We hypothesize that this inconsistency is the result of methodologic differences in the statistical analysis between those results and the results presented in the current article. The U.S. study (12) only reported on risk associated with high SAT (highest tertile) versus lower SAT (reference group consisting of participants in the lowest two tertiles). This categorization may not have been optimal to detect a potential increased risk of mortality with lower levels of SAT. This underlines the importance of using splines to explore the potential associations of features of body composition and mortality (39). Studies among other cancer populations have also reported a statistically significant association between low abdominal SAT versus normal/high abdominal SAT and higher mortality (13, 40, 41). The potential mechanism of why low SAT may be associated with increased risk of mortality remains to be established, but low SAT areas may be a sign of minimal metabolic reserves, which may explain why these patients have a higher mortality (42).

VAT was not significantly associated with worse survival in our population, which is consistent with three other studies (11, 12, 16), but not with two other studies (15, 18). As mentioned before, one of those earlier studies used splines to investigate the association of VAT and mortality. That study observed that among women, higher levels of VAT were associated with higher mortality relative to a reference value of 50 cm², and that among men, having VAT levels of ~100–300 cm² was associated with lower mortality compared with the reference value of 50 cm². As also argued in the earlier paragraph on the SAT findings, an important factor to consider is what was chosen as the reference group. In our analyses, we chose the median value as reference value, while in the other study a (very low) VAT level of 50 cm² was chosen as reference value. Moreover, the range of values in VAT is smaller in our cohort than in the cohort from the United States. From the splines reported in that article, it is apparent that the increased risk of mortality with increasing VAT levels reached statistical significance when levels of VAT were above approximately 200 cm². In our dataset, only a limited number of women had VAT levels above that value, and thus our statistical power to observe associations was limited. In addition, contrary to the other study, we adjusted our analyses for VAT for skeletal muscle radiodensity. This adjustment attenuated our

Skeletal Muscle Mass, Fat Mass, and Mortality in CRC Patients

**Figure 5.**

The association of subcutaneous adipose tissue and mortality among patients with colorectal cancer stratified into men (**A**) and women (**B**), adjusted for age and stage of disease, radiotherapy, chemotherapy, skeletal muscle density, and SMI with three knots located at the 5th, 50th (reference), and 95th percentiles of the distribution of SAT.

HR with more than 10%, while the other study chose not to adjust for it. Thus, this discrepancy can partly explain the different findings. Although more research on this topic is warranted, a conclusion could be that the increased risk of higher levels of VAT is evident mostly among very high levels of VAT, and this is most relevant for populations with extremely high BMI.

This study has some limitations. Almost one quarter of the patients in the original dataset had to be excluded, mostly due to unavailable or unusable CT images. Nevertheless, sex, age, and stage distribution were largely similar for in- and excluded patients, so we are confident that excluding these patients did not affect our findings substantially. This study consisted of data from three independent studies. The size of the separate studies was too small to conduct separate analysis for the different studies. However, Supplementary Table S2 shows that characteristics are generally similar across cohorts, thus we are confident that results are similar across cohorts and across the total cohort. As in any observational study, we might miss data of unknown confounders

which could influence the observed associations and lead to residual confounding.

Strengths of this study were the large study population and the use of CT images to assess body composition. Furthermore, this is the largest European study with information on body composition, clinical factors, and personal factors thus far. Although earlier large-scale studies in U.S./Canadian populations have been performed, the differences in body composition (related to a generally lower BMI in Europe; ref. 38) underline the necessity to study these associations in European populations. Further studies, including even more diverse populations, for example Asian or African cohorts, could shed further light on associations between body composition and colorectal cancer prognosis.

In conclusion, in this large-scale study among patients with stage I–III colorectal cancer, lower abdominal SMI levels were associated with higher mortality among men, but not among women. Lower abdominal SAT levels were associated with higher

van Baar et al.

overall mortality in both men and women. An association between VAT and mortality was not observed. Our results show the utility and importance of using splines to explore relationships of features of body composition and mortality. Furthermore, our findings underline the importance for more attention to sex-related differences in body composition and cancer outcomes.

Disclosure of Potential Conflicts of Interest

No potential conflicts of interest were disclosed.

Authors' Contributions

Conception and design: H. van Baar, R.M. Winkels, M.J.L. Bours, E. Kampman, S. Beijer

Development of methodology: H. van Baar, R.M. Winkels

Acquisition of data (provided animals, acquired and managed patients, provided facilities, etc.): M.J.L. Bours, M.P. Weijenberg, M. van Zutphen, E.J.S. Bilgen, J.H.W. de Wilt

Analysis and interpretation of data (e.g., statistical analysis, biostatistics, computational analysis): H. van Baar, R.M. Winkels, J.G.M. Brouwer, H.C. Boshuizen, J.H.W. de Wilt, S. Beijer

Writing, review, and/or revision of the manuscript: H. van Baar, R.M. Winkels, J.G.M. Brouwer, M.J.L. Bours, M.P. Weijenberg, H.C. Boshuizen, M. van Zutphen, F.J.B. van Duijnhoven, D.E. Kok, E. Wesselink, G.D. Slooter, E.J.S. Bilgen, B.M.E. Hansson, J.H.W. de Wilt, E. Kampman, S. Beijer

Administrative, technical, or material support (i.e., reporting or organizing data, constructing databases): H. van Baar, R.M. Winkels, E. Wesselink

Study supervision: H. van Baar, R.M. Winkels, M.P. Weijenberg, E. Kampman, S. Beijer

Acknowledgments

The authors would like to thank all participants, the involved coworkers in the participating hospitals, and the COLON investigators at Wageningen University & Research. The COLON study was financially supported by: Wereld Kanker Onderzoek Fonds (WKOF) and World Cancer Research Fund International (WCRF International; principal investigator: E. Kampman) as well as by funds from grant 2014/1179 as part of the World Cancer Research Fund International Regular Grant Programme (principal investigator: E. Kampman and R.M. Winkels); Alpe d'HuZes/Dutch Cancer Society [UM 2012-5653 (principal investigator: M.P. Weijenberg), UW 2013-5927 (principal investigator: F.J.B. van Duijnhoven), UW 2015-7946 (principal investigator: F.J.B. van Duijnhoven)]; ERA-NET on Translational Cancer Research [TRANSCAN: Dutch Cancer Society (UW2013-6397, UW2014-6877 (principal investigator for both: E. Kampman) and the Netherlands Organization for Health Research and Development (ZonMw), the Netherlands (principal investigator: E. Kampman)]. The EnCoRe study was supported by a grant from the Stichting Alpe d'HuZes within the research program 'Leven met kanker' of the Dutch Cancer Society [grant no. UM-2010-4867 (principal investigator: M.P. Weijenberg)] and by a grant from 'Kankeronderzoekfonds Limburg' as part of Health Foundation Limburg [grant no. 00005739 (principal investigator: M.P. Weijenberg)].

The costs of publication of this article were defrayed in part by the payment of page charges. This article must therefore be hereby marked *advertisement* in accordance with 18 U.S.C. Section 1734 solely to indicate this fact.

Received September 16, 2019; revised December 12, 2019; accepted February 25, 2020; published first March 4, 2020.

References

- Bray F, Ferlay J, Soerjomataram I, Siegel RL, Torre LA, Jemal A. Global cancer statistics 2018: GLOBOCAN estimates of incidence and mortality worldwide for 36 cancers in 185 countries. *CA Cancer J Clin* 2018;68:394–424.
- Choi MH, Oh SN, Lee IK, Oh ST, Won DD. Sarcopenia is negatively associated with long-term outcomes in locally advanced rectal cancer. *J Cachexia Sarcopenia Muscle* 2018;9:53–9.
- Malietzis G, Currie AC, Athanasiou T, Johns N, Anyamene N, Glynn-Jones R, et al. Influence of body composition profile on outcomes following colorectal cancer surgery. *Br J Surg* 2016;103:572–80.
- van der Kroft G, Bours M, Janssen-Heijnen M, van Berlo C, Konsten J. Value of sarcopenia assessed by computed tomography for the prediction of postoperative morbidity following oncological colorectal resection: a comparison with the malnutrition screening tool. *Clinical nutrition ESPEN* 2018;24:114–9.
- Van Vledder MG, Levolver S, Ayez N, Verhoef C, Tran TCK, Ijzermans JNM. Body composition and outcome in patients undergoing resection of colorectal liver metastases. *Br J Surg* 2012;99:550–7.
- Lodewick TM, Nijntjen TJ, Dam RM, Mierlo K, Dello SA, Neumann UP, et al. Are sarcopenia, obesity and sarcopenic obesity predictive of outcome in patients with colorectal liver metastases? *HPB* 2015;17:438–46.
- Prado CM, Lieffers JR, McCargar LJ, Reiman T, Sawyer MB, Martin L, et al. Prevalence and clinical implications of sarcopenic obesity in patients with solid tumours of the respiratory and gastrointestinal tracts: a population-based study. *Lancet Oncol* 2008;9:629–35.
- Blauwhoff-Buskermolen S, Versteeg KS, de van der Schueren MA, Den Braver NR, Berkhof J, Langius JA, et al. Loss of muscle mass during chemotherapy is predictive for poor survival of patients with metastatic colorectal cancer. *J Clin Oncol* 2016;34:1339–44.
- van Vugt J, van den Braak RC, Lalmahomed Z, Vrijland W, Dekker J, Zimmerman D, et al. Impact of low skeletal muscle mass and density on short and long-term outcome after resection of stage I–III colorectal cancer. *Eur J Surg Oncol* 2018;44:1354–60.
- Miyamoto Y, Baba Y, Sakamoto Y, Ohuchi M, Tokunaga R, Kurashige J, et al. Sarcopenia is a negative prognostic factor after curative resection of colorectal cancer. *Ann Surg Oncol* 2015;22:2663–8.
- Black D, Mackay C, Ramsay G, Hamoodi Z, Nanthakumaran S, Park KG, et al. Prognostic value of computed tomography: measured parameters of body composition in primary operable gastrointestinal cancers. *Ann Surg Oncol* 2017;24:2241–51.
- Caan BJ, Meyerhardt JA, Kroenke CH, Alexeeff S, Xiao J, Weltzien E, et al. Explaining the obesity paradox: the association between body composition and colorectal cancer survival (C-SCANS study). *Cancer Epidemiol Biomarkers Prev* 2017;26:1008–15.
- Ebadi M, Martin L, Ghosh S, Field CJ, Lehner R, Baracos VE, et al. Subcutaneous adiposity is an independent predictor of mortality in cancer patients. *Br J Cancer* 2017;117:148.
- Martin L, Birdsell L, Macdonald N, Reiman T, Clandinin MT, McCargar LJ, et al. Cancer cachexia in the age of obesity: skeletal muscle depletion is a powerful prognostic factor, independent of body mass index. *J Clin Oncol* 2013;31:1539–47.
- Lee CS, Murphy DJ, McMahon C, Nolan B, Cullen G, Mulcahy H, et al. Visceral adiposity is a risk factor for poor prognosis in colorectal cancer patients receiving adjuvant chemotherapy. *J Gastrointest Cancer* 2015;46:243–50.
- Rickles AS, Iannuzzi JC, Mironov O, Deeb AP, Sharma A, Fleming FJ, et al. Visceral obesity and colorectal cancer: are we missing the boat with BMI? *J Gastrointest Surg* 2013;17:133–43.
- Hopkins JJ, Reif RL, Bigam DL, Baracos VE, Eurich DT, Sawyer MB. The impact of muscle and adipose tissue on long-term survival in patients with stage I to III colorectal cancer. *Dis Colon Rectum* 2019;62:549–60.
- Brown JC, Caan BJ, Prado CM, Cespedes Feliciano EM, Xiao J, Kroenke CH, et al. The association of abdominal adiposity with mortality in patients with stage I–III colorectal cancer. *J Natl Cancer Inst* 2019 Jul 29 [Epub ahead of print].
- Siegel RL, Miller KD, Fedewa SA, Ahnen DJ, Meester RG, Barzi A, et al. Colorectal cancer statistics, 2017. *CA Cancer J Clin* 2017;67:177–93.
- Wie G-A, Cho Y-A, Kim S-Y, Kim S-M, Bae J-M, Joung H. Prevalence and risk factors of malnutrition among cancer patients according to tumor location and stage in the National Cancer Center in Korea. *Nutrition* 2010;26:263–8.
- Daly LE, Ryan AM, Power DG. Response to “Loss of muscle mass during chemotherapy is predictive for poor survival of patients with metastatic colorectal cancer”. *J Clin Oncol* 2016;34:3816–7.
- Blauwhoff-Buskermolen S, Schueren MAEdvd, Langius JAE, Verheul HMW. Reply to L.E. Daly et al. *J Clin Oncol* 2016;34:3817.
- Schorr M, Dichtel LE, Gerweck AV, Valera RD, Torriani M, Miller KK, et al. Sex differences in body composition and association with cardiometabolic risk. *Biol Sex Differ* 2018;9:28.

Skeletal Muscle Mass, Fat Mass, and Mortality in CRC Patients

24. Liesenfeld DB, Grapov D, Fahrman JF, Salou M, Scherer D, Toth R, et al. Metabolomics and transcriptomics identify pathway differences between visceral and subcutaneous adipose tissue in colorectal cancer patients: the ColoCare study. *Am J Clin Nutr* 2015;102:433–43.
25. Ibrahim MM. Subcutaneous and visceral adipose tissue: structural and functional differences. *Obes Rev* 2010;11:11–8.
26. Desquilbet L, Mariotti F. Dose-response analyses using restricted cubic spline functions in public health research. *Stat Med* 2010;29:1037–57.
27. Bredella MA. Sex differences in body composition. *Adv Exp Med Biol* 2017;1043: 9–27.
28. Gheller BJF, Riddle ES, Lem MR, Thalacker-Mercer AE. Understanding age-related changes in skeletal muscle metabolism: differences between females and males. *Annu Rev Nutr* 2016;36:129–56.
29. Cartier A, Côté M, Lemieux I, Périus L, Tremblay A, Bouchard C, et al. Sex differences in inflammatory markers: what is the contribution of visceral adiposity? *Am J Clin Nutr* 2009;89:1307–14.
30. Winkels R, Heine-Boring R, Van Zutphen M, van Harten-Gerritsen S, Kok D, Van Duijnhoven F, et al. The COLON study: colorectal cancer: Longitudinal, Observational study on Nutritional and lifestyle factors that may influence colorectal tumour recurrence, survival and quality of life. *BMC Cancer* 2014;14:374.
31. van Roekel EH, Bours MJL, de Brouwer CPM, Ten Napel H, Sanduleanu S, Beets GL, et al. The applicability of the international classification of functioning, disability, and health to study lifestyle and quality of life of colorectal cancer survivors. *Cancer Epidemiol Biomarkers Prev* 2014;23: 1394–405.
32. van Baar H, Beijer S, Bours M, Weijenberg M, van Zutphen M, van Duijnhoven F, et al. Low radiographic muscle density is associated with lower overall and disease-free survival in early-stage colorectal cancer patients. *J Cancer Res Clin Oncol* 2018;144:2139–47.
33. Prado CMM, Birdsell LA, Baracos VE. The emerging role of computerized tomography in assessing cancer cachexia. *Curr Opin Support Palliat Care* 2009;3: 269–75.
34. Mitsiopoulos N, Baumgartner R, Heymsfield S, Lyons W, Gallagher D, Ross R. Cadaver validation of skeletal muscle measurement by magnetic resonance imaging and computerized tomography. *J Appl Physiol* 1998;85:115–22.
35. Lee DH, Giovannucci EL. Body composition and mortality in the general population: a review of epidemiologic studies. *Exp Biol Med* 2018;243: 1275–85.
36. Bano G, Trevisan C, Carraro S, Solmi M, Luchini C, Stubbs B, et al. Inflammation and sarcopenia: a systematic review and meta-analysis. *Maturitas* 2017;96:10–5.
37. Clayton JA. Applying the new SABV (sex as a biological variable) policy to research and clinical care. *Physiol Behav* 2018;187:2–5.
38. Bassett DR, Pucher Jr J, Buehler R, Thompson DL, Crouter SE. Walking, cycling, and obesity rates in Europe, North America, and Australia. *J Phys Act Health* 2008;5:795–814.
39. Marrie RA, Dawson NV, Garland A. Quantile regression and restricted cubic splines are useful for exploring relationships between continuous variables. *J Clin Epidemiol* 2009;62:511–7.
40. Antoun S, Bayar A, Ileana E, Laplanche A, Fizazi K, di Palma M, et al. High subcutaneous adipose tissue predicts the prognosis in metastatic castration-resistant prostate cancer patients in post chemotherapy setting. *Eur J Cancer* 2015;51:2570–7.
41. Li X-T, Tang L, Chen Y, Li Y-L, Zhang X-P, Sun Y-S. Visceral and subcutaneous fat as new independent predictive factors of survival in locally advanced gastric carcinoma patients treated with neo-adjuvant chemotherapy. *J Cancer Res Clin Oncol* 2015;141:1237–47.
42. Lavie CJ, McAuley PA, Church TS, Milani RV, Blair SN. Obesity and cardiovascular diseases: implications regarding fitness, fatness, and severity in the obesity paradox. *J Am Coll Cardiol* 2014;63:1345–54.

Cancer Epidemiology, Biomarkers & Prevention

Associations of Abdominal Skeletal Muscle Mass, Fat Mass, and Mortality among Men and Women with Stage I–III Colorectal Cancer

Harm van Baar, Renate M. Winkels, Jesca G.M. Brouwer, et al.

Cancer Epidemiol Biomarkers Prev 2020;29:956-965. Published OnlineFirst March 4, 2020.

Updated version Access the most recent version of this article at:
doi:[10.1158/1055-9965.EPI-19-1134](https://doi.org/10.1158/1055-9965.EPI-19-1134)

Supplementary Material Access the most recent supplemental material at:
<http://cebp.aacrjournals.org/content/suppl/2020/03/04/1055-9965.EPI-19-1134.DC1>

Cited articles This article cites 41 articles, 7 of which you can access for free at:
<http://cebp.aacrjournals.org/content/29/5/956.full#ref-list-1>

E-mail alerts [Sign up to receive free email-alerts](#) related to this article or journal.

Reprints and Subscriptions To order reprints of this article or to subscribe to the journal, contact the AACR Publications Department at pubs@aacr.org.

Permissions To request permission to re-use all or part of this article, use this link
<http://cebp.aacrjournals.org/content/29/5/956>.
Click on "Request Permissions" which will take you to the Copyright Clearance Center's (CCC) Rightslink site.