

# How to create progress in sustainability performance in the dairy chain?

Alfons Beldman, Wageningen University & Research  
based on input from several projects and WUR colleagues

IDF World Dairy Summit, Istanbul, 25 September 2019

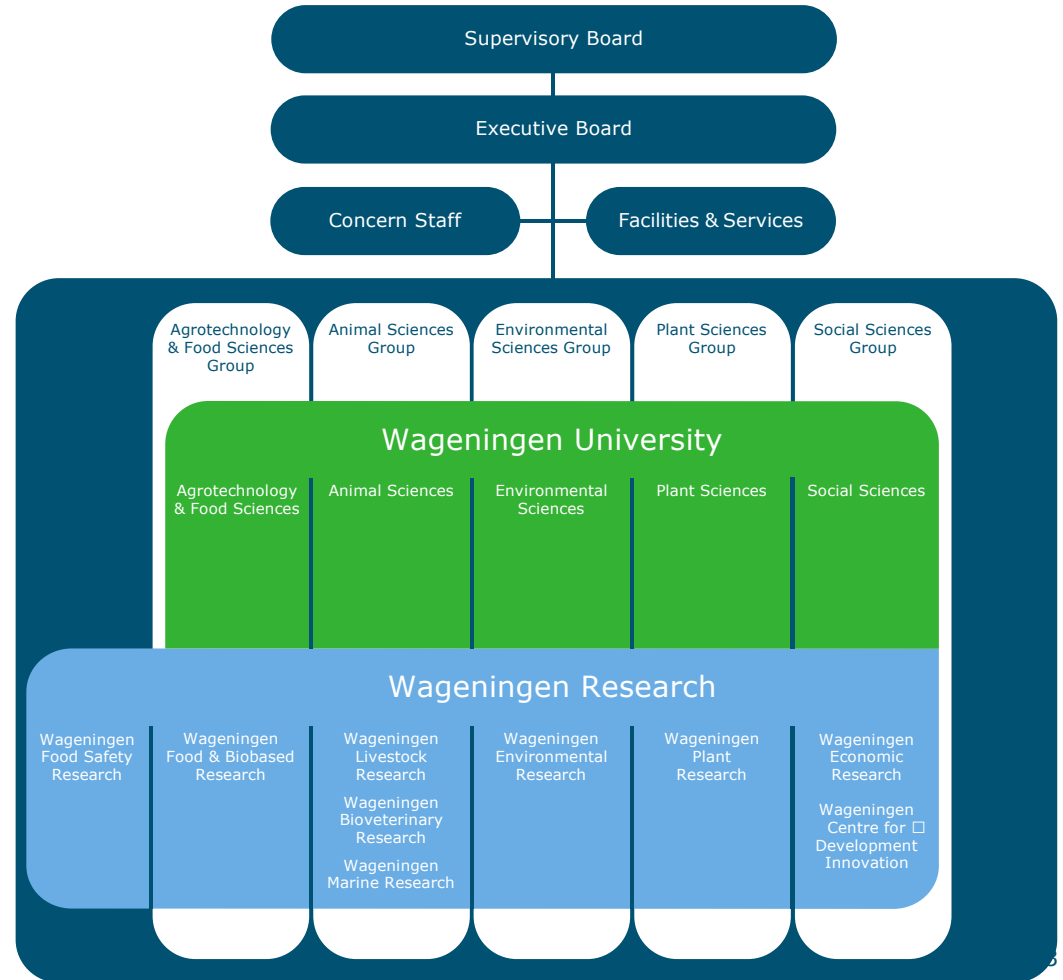


# Two partners

## Wageningen University & Wageningen Research



# Organigram



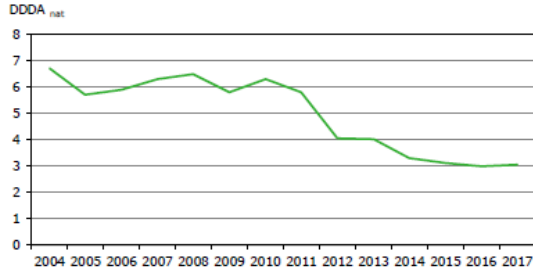
# What do we do as Wageningen University & Research?

- Hands-on projects
  - Building Rural Income through Inclusive Dairy Growth in Ethiopia (BRIDGE)
  - Sino Dutch Dairy Development Centre
- Impact evaluation
  - Evidence-based insights on impacts
  - with local partners
  - in Africa, Asia, Latin America
  - certification schemes, trainings etc.



# What do we do as Wageningen University & Research?

## Metrics & Measure



Theme	Sub-theme	Indicator	Current objective achievement status a)	Progress compared to 2016 b)
Climate-neutral development	Greenhouse gas emissions	Dairy Chain Emissions: (Mton CO <sub>2</sub> -eq.)	!	✓
	Energy efficiency	Dairy chain primary fuel consumption (m <sup>3</sup> BOE per 1000 kg milk)	✓	✓
	Sustainable production of energy	Sustainable energy production (% of consumption)	!	✓

## Monitor & Improve



Melkveehouders over verduurzaming in de zuivelketen



Adviseurs over verduurzaming in de zuivelketen

“Up-to-date farmers”  
“Wait-and-see farmers”

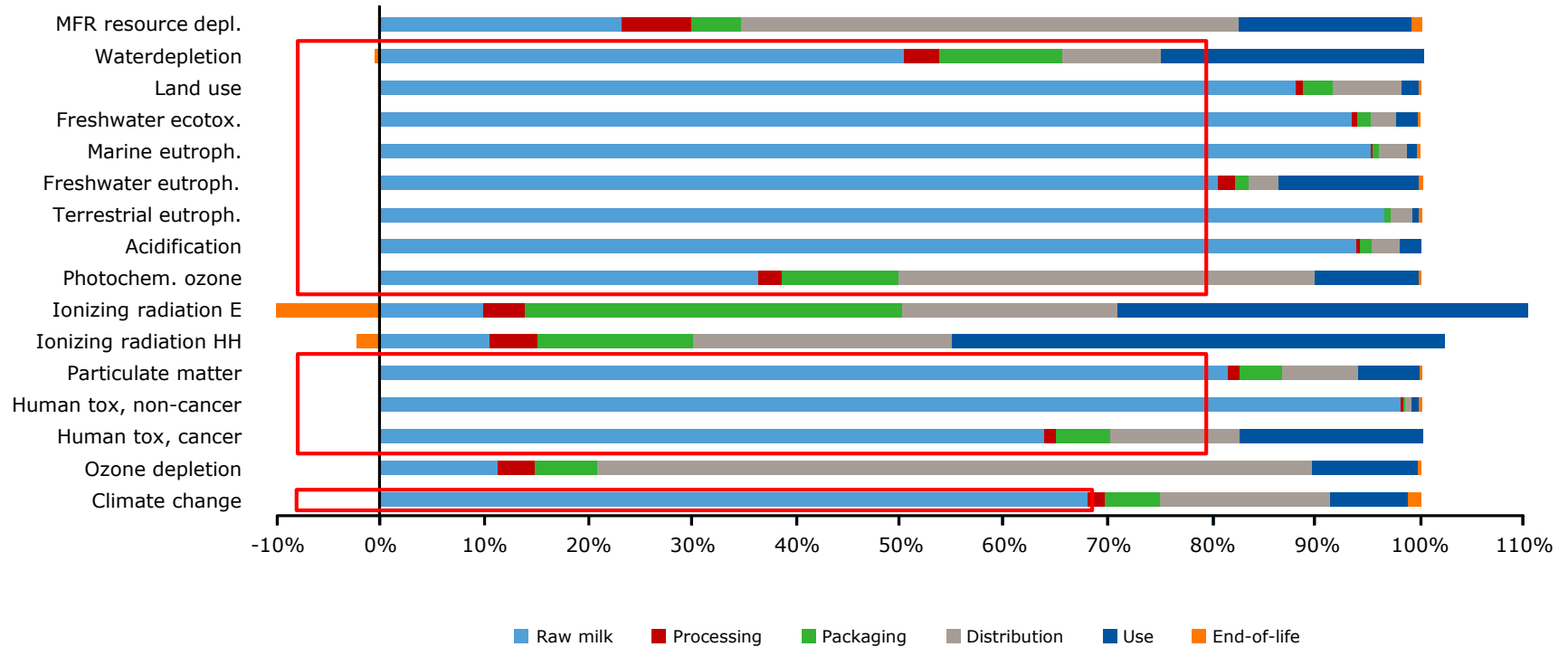
“Advisors will not raise the topic of sustainability.”

# RESET

# Selection of partners we are working with

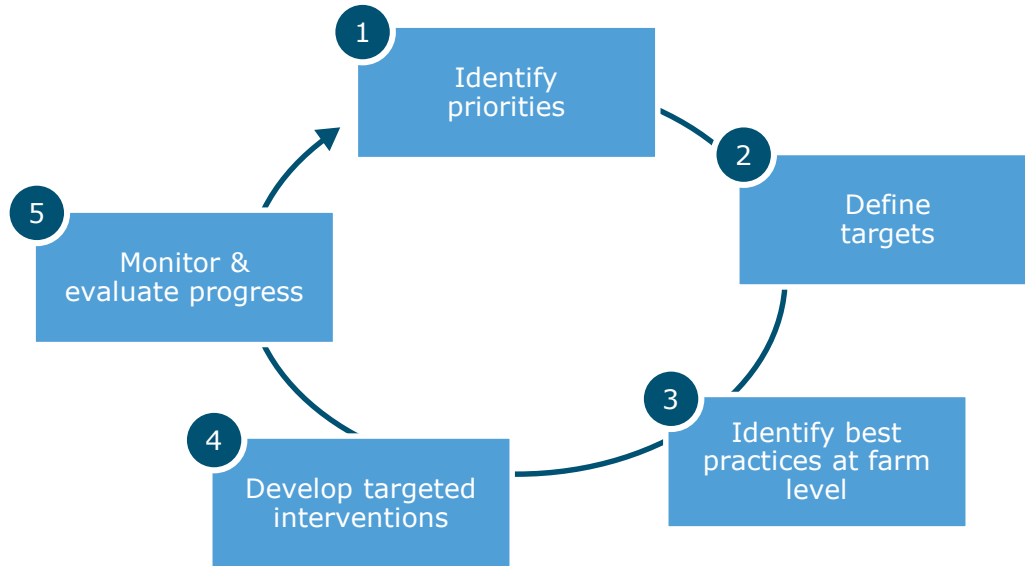


# Most impacts occur at farm level



# Sustainability as continuous improvement process

## Our central framework:



- Integrated approach essential: chain as strong as weakest link
- No change without interventions with impact at farm level



Farm is key in sustainability in dairy chain

To improve sustainability the **farmer** has to change practices



### Which practises can be implemented?

#### Farm type 1

- Practice 1
- Practice 3
- Practice 4
- Practice 5
- Practice 7

#### Farm type 2

- Practice 2
- Practice 4
- Practice 5
- Practice 6
- Practice 8
- Practice 9

#### Farm type 3

- Practice 1
- Practice 2
- Practice 3
- Practice 8
- Practice 9
- Practice 10

### What makes the farmer change his practices?

#### Farmer type

- Front runner
- Early adopter
- Late adopter
- Laggard

#### Type of intervention

RESET

Regulations

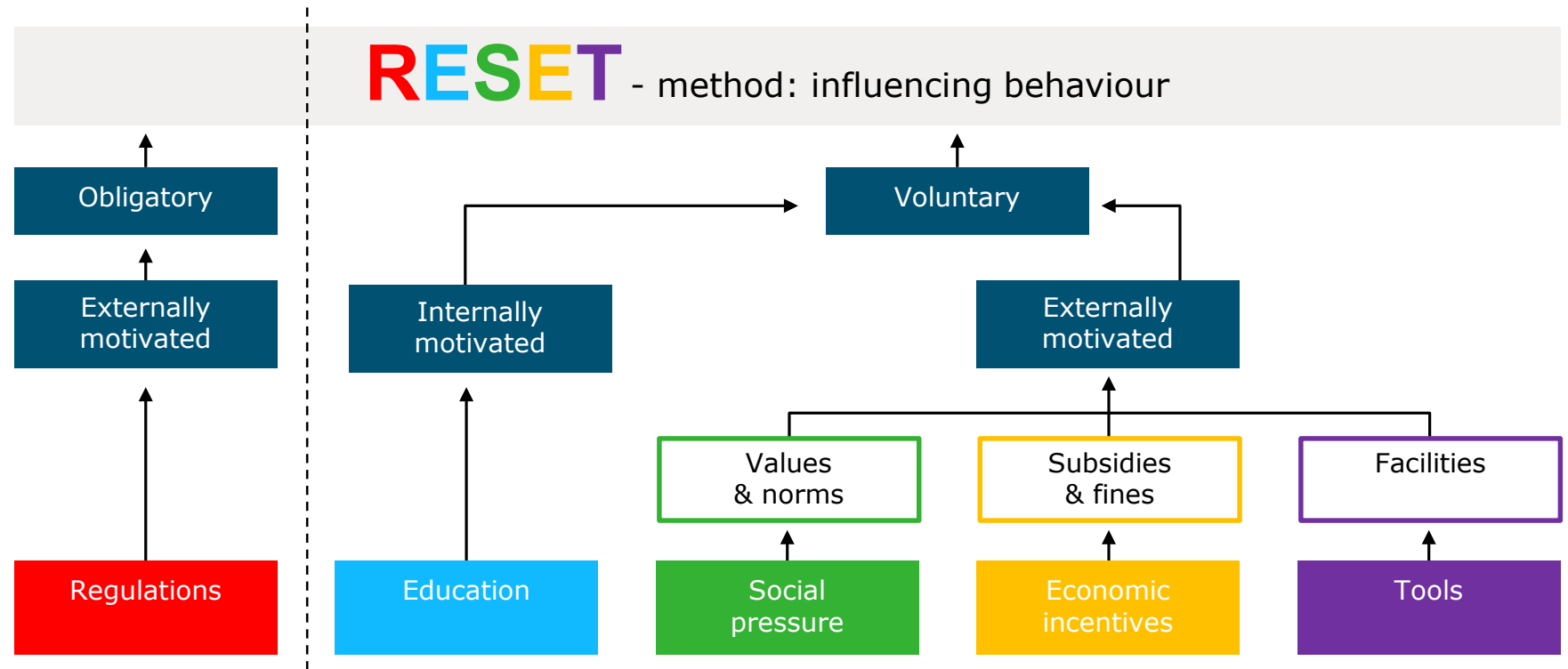
Education

Social pressure

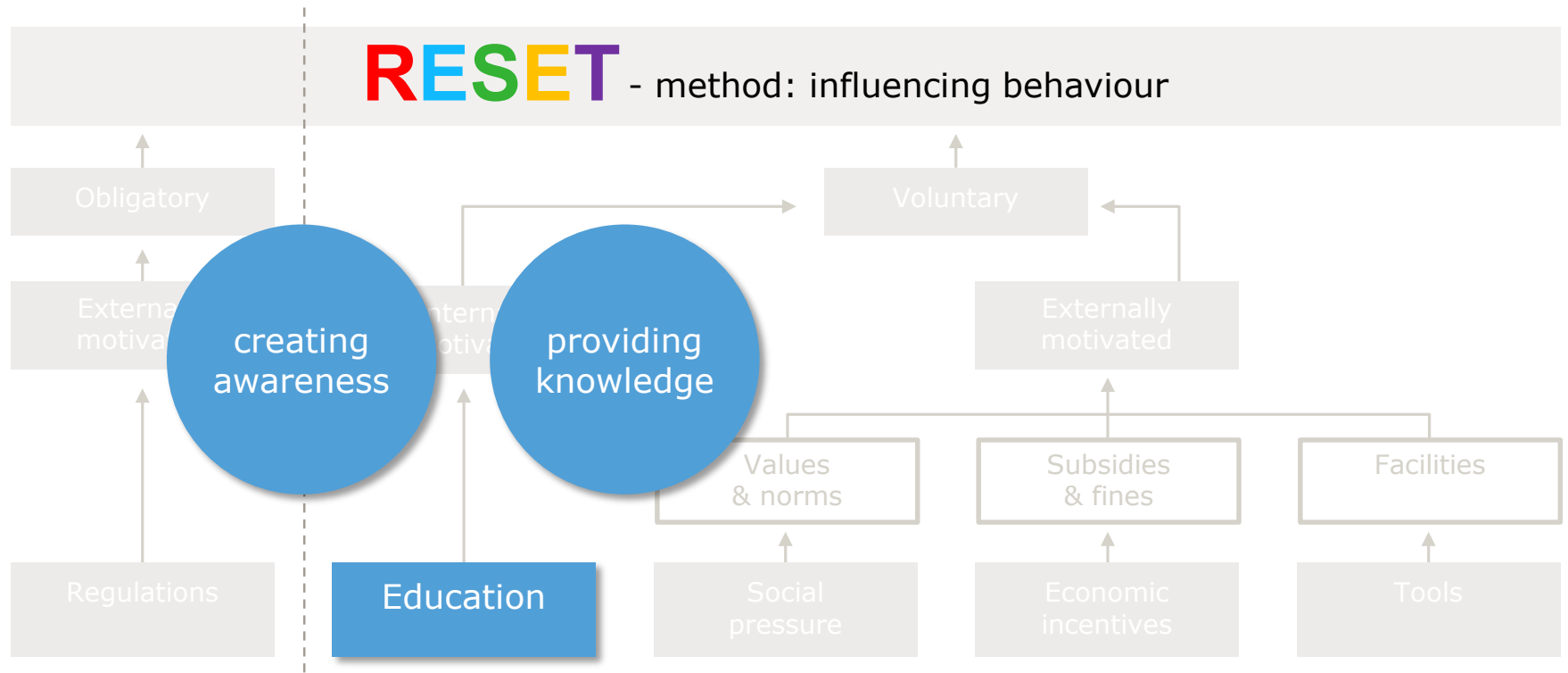
Economic incentives

Tools

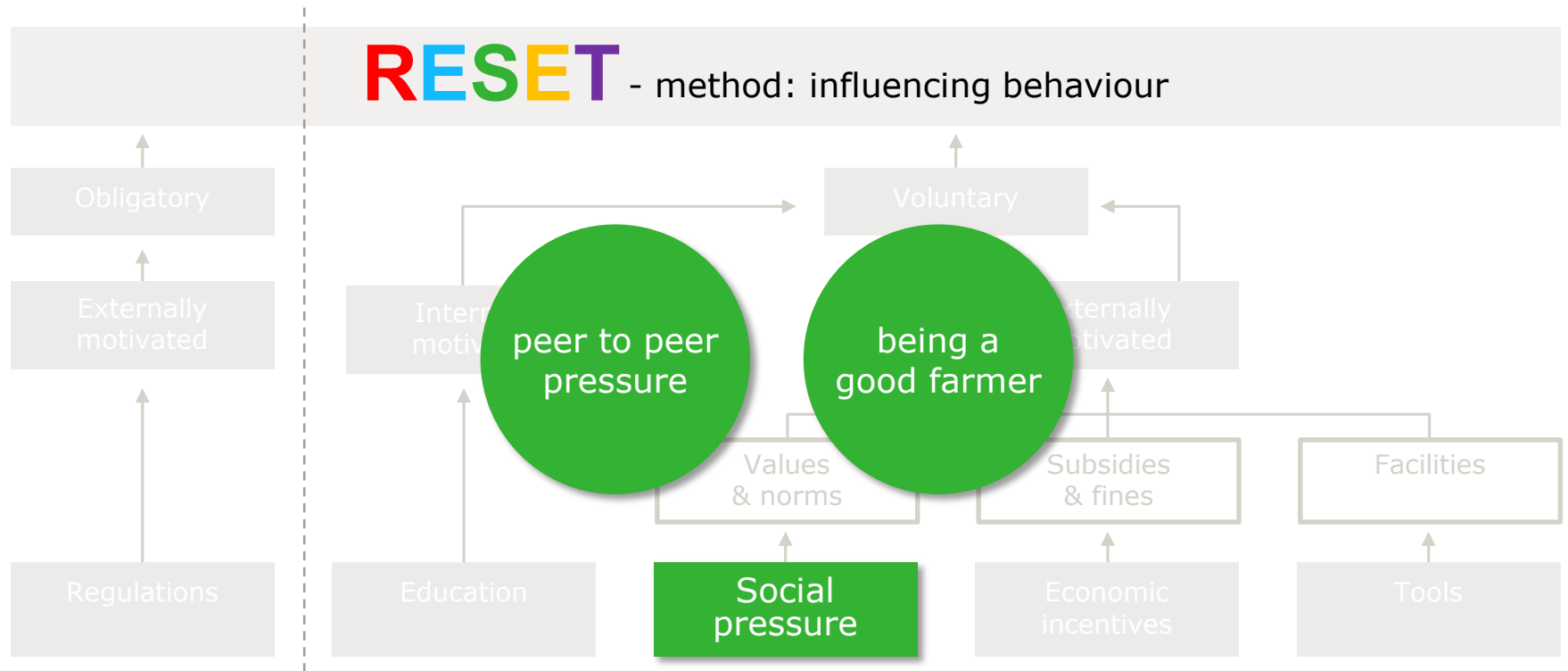
# Different types of interventions



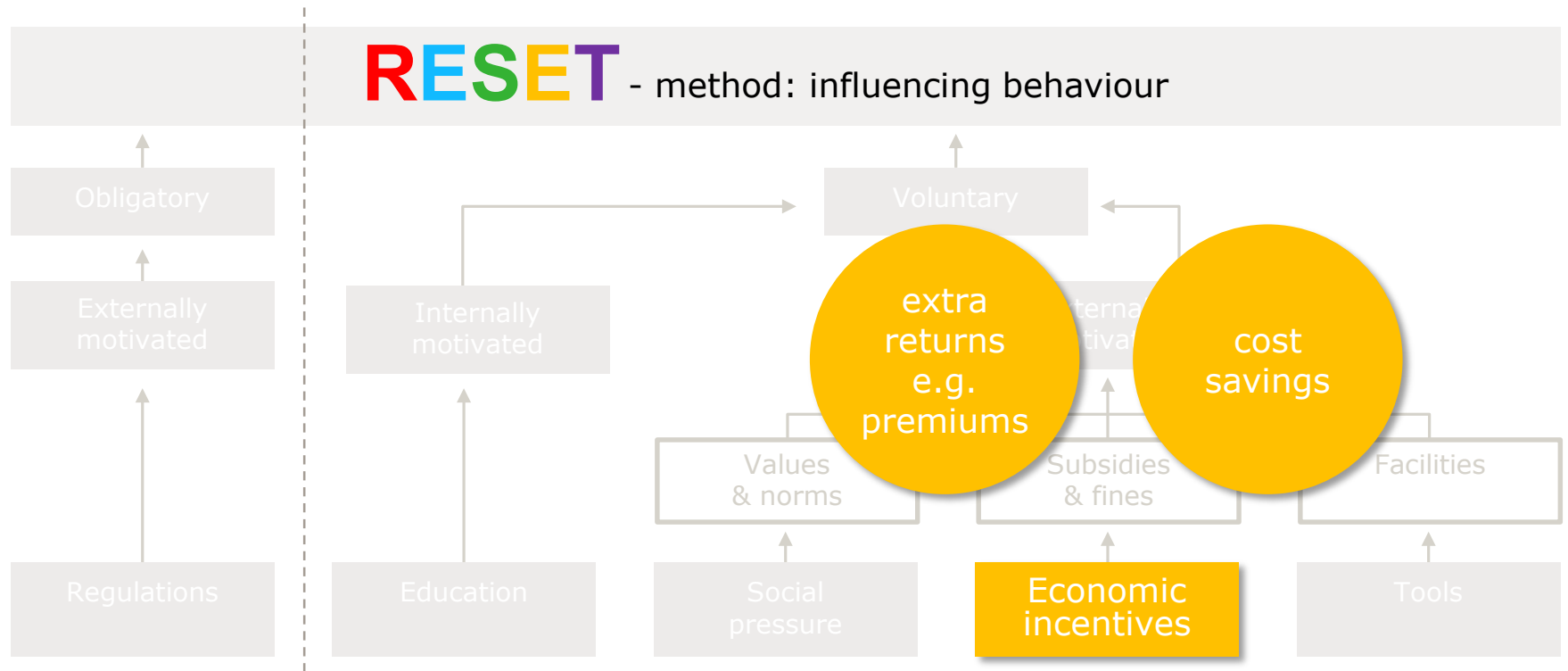
# Different types of interventions



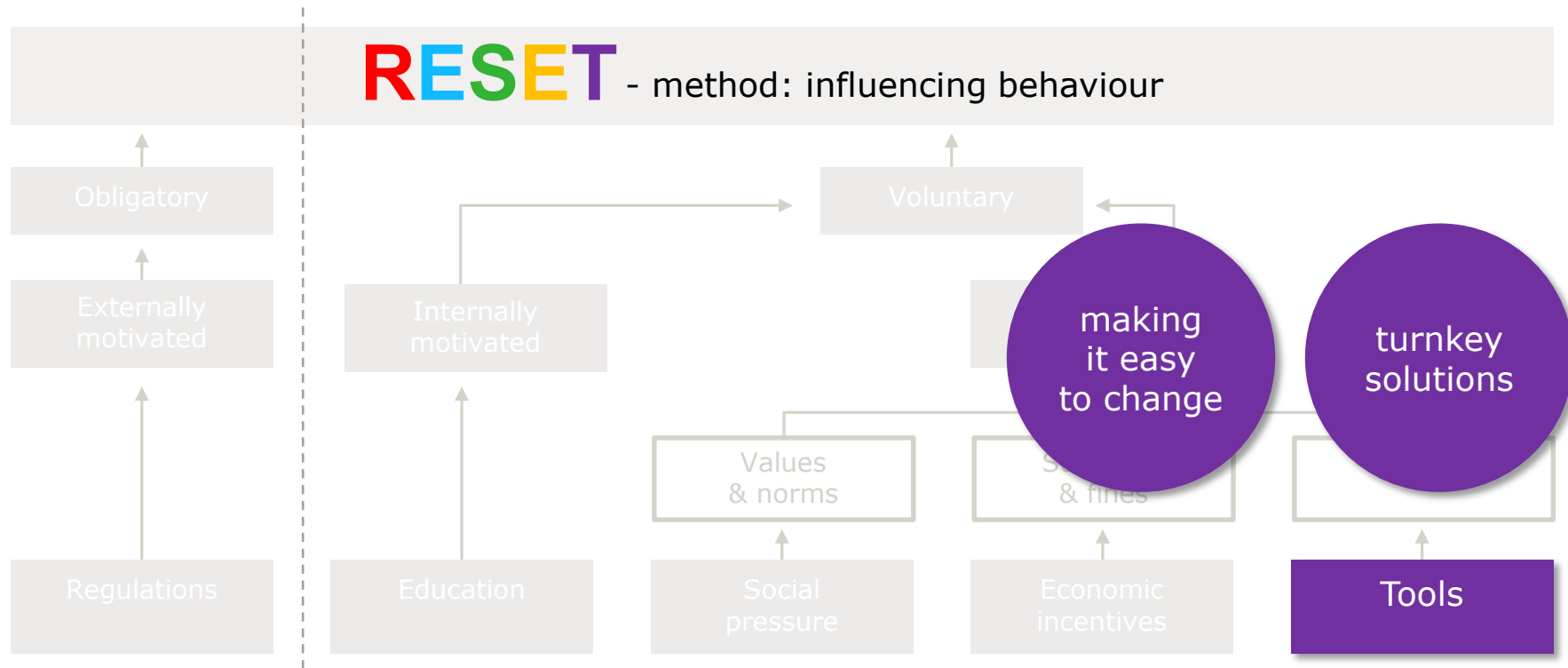
# Different types of interventions



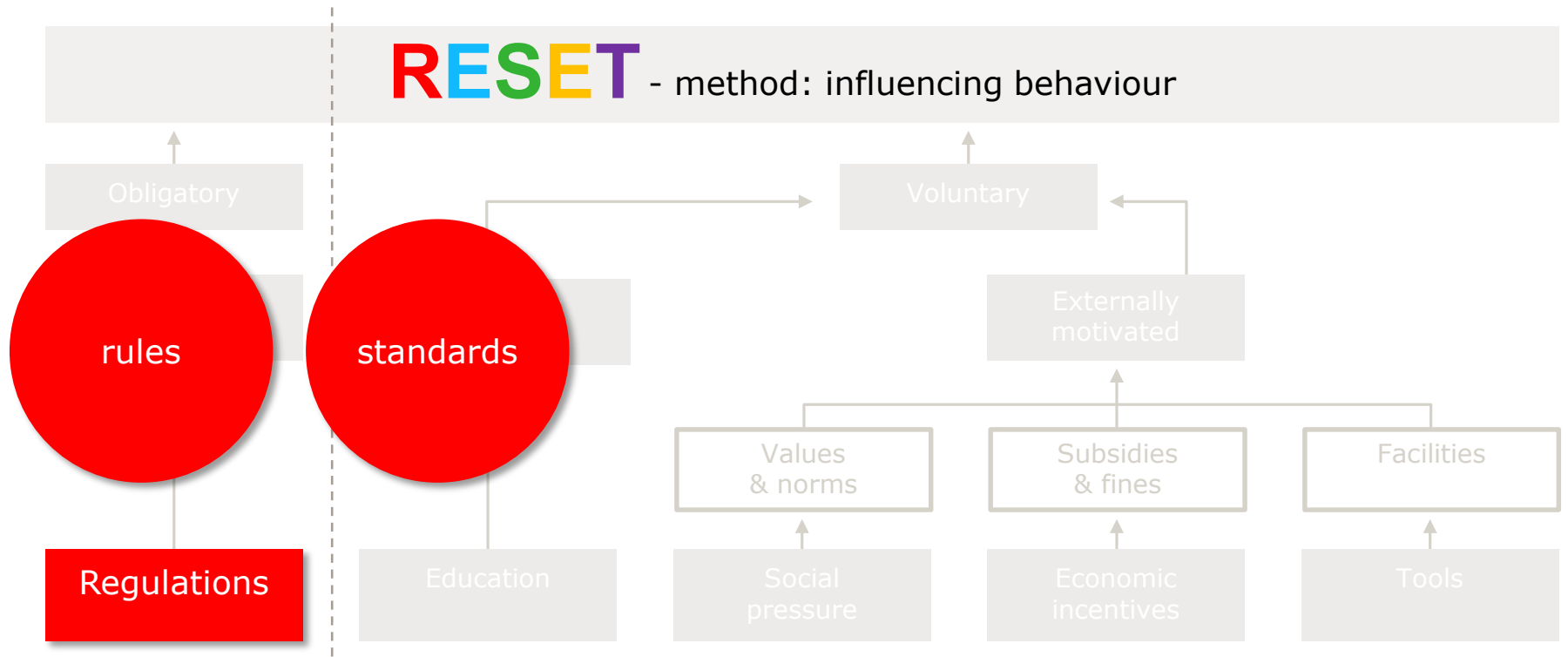
# Different types of interventions



# Different types of interventions



# Different types of interventions



# Sustainability as continuous improvement process

- It is not just about farmers, develop with farmers e.g.
  - Developing best practices
  - Farmers learning from farmers
- No silver bullet, do not copy paste!
- Programme has to fit with identity of the organisation and culture of the region
- So let's develop and learn together!





---

# Thank you!

---



Alfons Beldman

[Alfons.Beldman@wur.nl](mailto:Alfons.Beldman@wur.nl)