

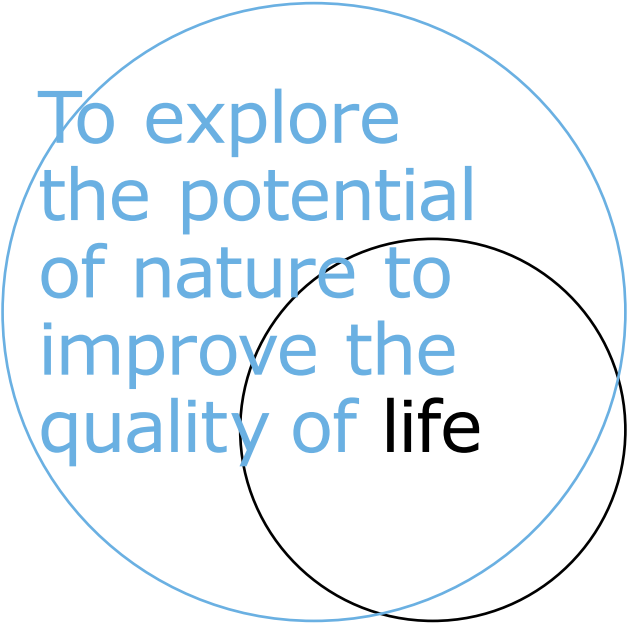


To explore  
the potential  
of nature to  
improve the  
quality of **life**



**WAGENINGEN**  
UNIVERSITY & RESEARCH





To explore  
the potential  
of nature to  
improve the  
quality of life

---



**WAGENINGEN**  
UNIVERSITY & RESEARCH

---







## Contents

1	Wageningen University & Research	8
2	Our strength: education, research and valorisation	20
3	Facts about Wageningen University & Research	34







# 1 | Wageningen University & Research

Our world is changing. The population is growing fast and prosperity is increasing in many regions. Around the world, land use for food production is reaching its limits. The climate is visibly changing while fossil fuels are becoming ever scarcer. Meanwhile, people are attaching more importance to healthy, safe and sufficient food.

It is this changing world that is the real specialisation of Wageningen University & Research – the domain of good and safe food & food production, food security and a healthy living environment. In essence we not only develop knowledge but also help to apply it.

Our mission is: *'To explore the potential of nature to improve the quality of life'*. This is achieved together with industry, governments and research institutes around the world. In addition to our renowned fundamental research, Wageningen University & Research also has a strong global position as a supplier of application-oriented and field-based research. At the same

time, we educate many thousands of students from over a hundred countries to be professionals in the domain of 'healthy food and living environment' every year.

This combination of research, education and value creation has made us internationally successful. It is with good reason that we have a very high succesrate in attracting EU funds for research and score so highly in international rankings and citation indexes. This is due to the Wageningen approach – the joint strengths of the university and specialised research institutes and the connections between our scientific, technological and social disciplines. Furthermore, we are well aware that our partners – governments, companies, NGO's and research institutes at home and abroad – need to achieve genuine social breakthroughs. This is also why we cooperate on a large scale in public-private partnerships, as well as in confidential contract research.

Together we aim to continue to lead the way, bundling financial flows and using our knowledge to design applicable solutions for the major challenges faced by the world. This is the ultimate ambition of Wageningen University & Research.



## Global issues

In September 2015 the United Nations adopted the Sustainable Development Goals (SDG's). 17 goals and 169 targets setting the agenda for people, planet and prosperity for the next 15 years. Not only the United Nations, but also national authorities, civic society, business and research organisations commit their efforts towards the SDGs. The Sustainable Development Goals, aim at an array of issues that include slashing poverty, hunger, disease, gender inequality, and access to water and sanitation. Much of the research of Wageningen University & Research is connected with the Sustainable Development Goals, some of the major targets are listed below. The SDGs also provide guidelines for new research projects and programmes and collaborations with our partners.

- End hunger, achieve food security and improved nutrition and promote sustainable agriculture
- Ensure healthy lives and promote well being for all at all ages
- Ensure availability and sustainable management of water and sanitation for all
- Ensure access to affordable, reliable, sustainable and modern energy for all
- Make cities and human settlements inclusive, safe, resilient and sustainable





- Ensure sustainable consumption and production patterns
- Take urgent action to combat climate change and its impacts
- Conserve and sustainably use the oceans, seas and marine resources for sustainable development
- Protect, restore and promote sustainable use of terrestrial ecosystems, sustainably manage forests, combat desertification and halt and reverse land degradation and halt biodiversity loss

### Our approach

*Food:* Focusing on the total system: careful production and processing of healthy food, sustainable use of soil, water and atmosphere, reduction of inputs of nutrients, auxiliary chemicals and pesticides, and reduction of greenhouse gas emissions, with special attention to sustainability and animal welfare.

*Liveable metropolis:* Generating metropolitan solutions in order to arrive at smart cities: cities and metropolitan regions that – in close relationship with the surrounding rural areas – are liveable, healthy, resilient and circular.



*Clean water:* Improving sustainable use and management of ground and surface water, contributing to water purification and tackling salinisation.

*Biodiversity:* Acquiring insight into System Earth's capacity for recovery, and possibilities to improve that capacity locally and regionally.

*Circular economy:* Facilitating the transition to a circular economy founded on biobased raw materials, and studying the social and economic consequences of feed-food-fuel choices.

*Well-being:* Improving food products and production processes, enhancing healthy choice behaviour and acquiring insight into the role of cultural and behavioural factors.

*Wageningen University & Research not only develops knowledge but also helps to apply it*

## The campus

The major part of Wageningen University & Research is located on Wageningen Campus. The campus is focused on meeting and contact between knowledge organisations, educational institutions, the business community and start-ups. With the research institutes of Wageningen University & Research, national and international R&D companies such as FrieslandCampina, Noldus, Unilever (from 2019), Yili, Kikkoman and Keygene, research institutes such as NIOO, educational institutes such as the university and the Aeres University of Applied Sciences and numerous SMEs and start-ups, the campus offers the perfect climate for innovative solutions. Wageningen Campus offers a range of facilities and amenities. Companies and organisations are able to set up in a business complex or incubator. They can also utilise top-quality shared research facilities.

## Other Dutch locations

While our name suggests that we are located solely in Wageningen, we also have research and experimental facilities in 25 different places throughout the Netherlands. Lelystad is the site of our research into animal diseases and arable farming, for example, while ecological marine research is concentrated in the coastal towns of Den Helder, IJmuiden and Yerseke.

*The campus is increasingly taking on  
the function of a flywheel for innovation*



## Abroad

Wageningen University & Research is active in many regions in the world. From China to Chile and from Ethiopia to the Arctic, we work together with partners in research programmes. The goal is to improve food safety and food security, develop biobased products, materials and logistics chains, and determine the impact of economic activity on the environment and people. Our ambition is to further strengthen our global position by providing comprehensive support to our clients as they seek the right partners inside and outside of our organisation.

Because we are increasingly active abroad, Wageningen University & Research has a permanent office in China. This makes it easier to coordinate projects and develop new initiatives.



## Sustainability

Sustainability is an important pillar in all our research and education. This is reflected in our mission: *'To explore the potential of nature to improve the quality of life'*.

Sustainability also plays an important role in our business operations as we aim to be at the forefront of developments in the Netherlands in this respect. Wageningen University & Research is a climate neutral organisation, our entire CO<sub>2</sub> footprint is compensated mainly thanks to the high yields of our wind turbines in Lelystad.

Other measures we undertake to reduce our CO<sub>2</sub> footprint, are the use of geothermal heat pumps and the reduction of energy consumption in our buildings. Also Wageningen University & Research is well above the Dutch average in terms of sustainable procurement.

## Our domain: Healthy food & living environment

Our 5,545 employees and 11,477 students are active within the domain of healthy food & living environment. This comprises three core fields which are strongly inter-linked:

### **Society and Well-being**

The study of human behaviour in relation to food and living environment, lifestyle and perceptions, and focus on institutions, governance, the market and chains, and societal innovations.

### **Food, Feed and Biobased Production**

The sustainable production and processing of food, feed and biobased products, international food chains and networks, food safety and the health aspects of food.

# Our domain: healthy food and living environment

society and well-being

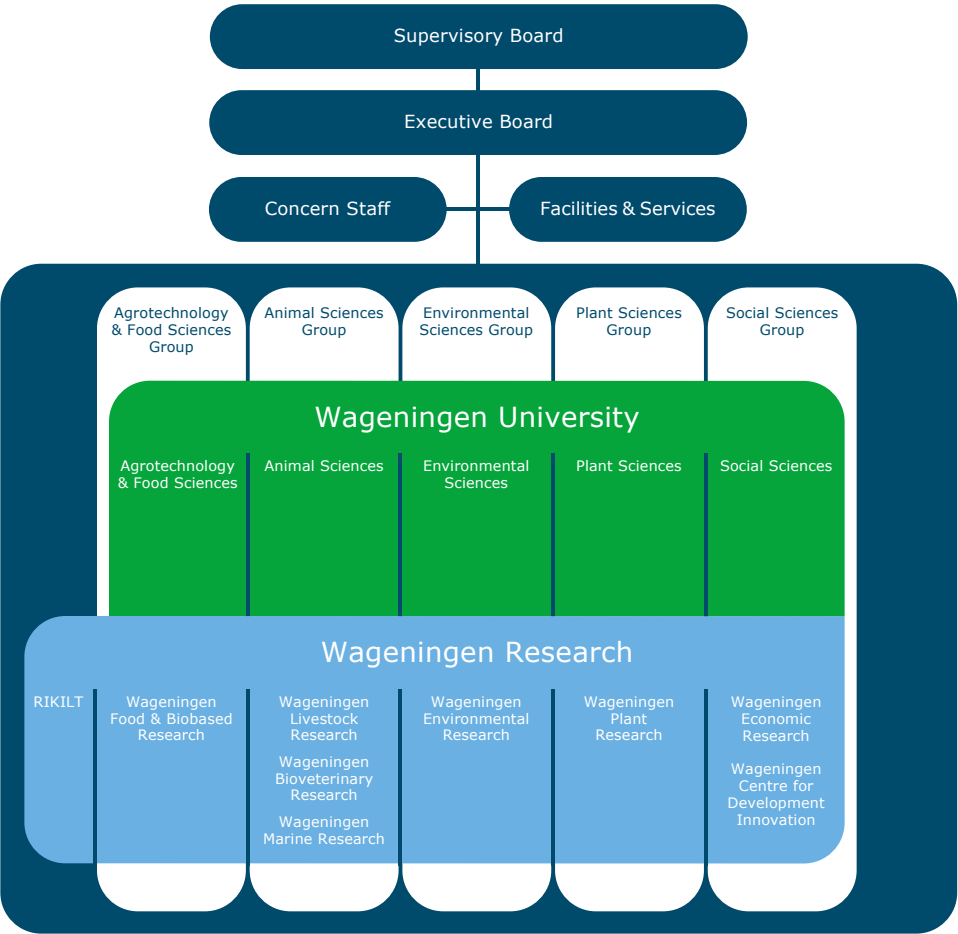


food, feed and  
biobased production



natural resources and  
living environment

# Organisation chart Wageningen University & Research



## **Natural Resources and Living Environment**

Natural habitats, landscape, land use, the management of water, sea and natural resources and biodiversity.

## **Research and education combined**

Wageningen University & Research is the cooperative framework of Wageningen University and the Wageningen Research Foundation, which comprises nine independent research institutes. They work together in five Sciences Groups. One department of the university is organisationally integrated within each Sciences Group together with one or more research institutes. This combination of forces allows education and research to partner in focused, high-quality projects (see the organogram on the left page).

*The combination of research, education and value creation has made us internationally successful*





# 2 | Our strength: education, research and value creation

The work of Wageningen University & Research comprises three components: education, independent research and value creation. Translating knowledge into practical value makes us strong.

## **Education**

With 19 bachelor programmes, 30 master's programmes and six graduate schools, Wageningen University & Research is the world's leading supplier of scientific education in the healthy food and living environment domain. Our education has a strong international focus, which is underlined by the composition of our student population. Of the total number of students, 22% are non-Dutch. In total, our students originate from more than a hundred countries, making us the most international university in the Netherlands.

Our global reputation is also demonstrated by our top position in international rankings when it comes to the research areas of society and well-being, food, feed and biobased production, natural resources and living environment. In addition to our BSc and MSc programmes, we offer training courses, distance

learning modules, incompany training options and (executive) management training to professionals in the Agri & Food sector via the Wageningen Academy (and the Centre for Development & Innovation).

## Research

Wageningen University & Research conducts scientific research across the board in the healthy food and living environment domain. This ranges from fundamental to applied research.

---

### The university's 5 departments

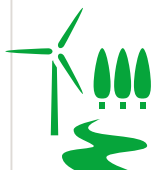
#### Agrotechnology & Food Sciences



#### Animal Sciences



#### Environmental Sciences



#### Plant Sciences



#### Social Sciences



### Fundamental research

Fundamental research is primarily carried out by our university scientists and, due to the nature of our work, is often highly practical. The university has 85 chair groups divided across five departments. Funding usually comes from the government or organisations for scientific research.

### Field-based research

Field-based research aimed at collecting primary data, using methods such as measurements and surveys, is primarily the domain of the independent research institutes at Wageningen University & Research. It is deployed to answer specific practical questions risen at industry, governments or in

society at large, allowing our scientists to find solutions and develop future innovations in areas such as crop production, livestock farming, animal welfare and the environment based on practical knowledge and insights. Industry is a very important client and partner in this type of research.

### **Application-oriented research**

A second type of research on which the research institutes work is application-oriented. This focuses in part on the development of expertise for practical applications. It includes, for instance, the development of biobased products as an alternative to petroleum-based products; new, sustainable production systems and processes; innovations that improve the functioning of agricultural chains; and applications that respond to climate change. Another component is policy support. Examples include studies into the impact of new laws and regulations or the influence of social developments on the income of farmers.

Application-oriented research is commissioned by the government, industry and non-profit organisations. It is often conducted in partnerships with governments, other research institutes and Dutch and international companies. But we also perform a lot of contract research on behalf of





specific clients. The results of public-private research are always available to the public, whereas research carried out on behalf of a given company means that publication of the results is subject to authorisation – possibly only once the parties involved have been made anonymous.

### **Independence**

Clients have no influence on research conclusions, which are solely based on facts we have determined and analysed in our research. Wageningen University & Research always notes in its research reports which parties funded the research.

*We encourage the development of spin-offs,  
which valorise the acquired knowledge on the market*

## *Value creation*

At Wageningen University & Research, we believe that a broad dissemination of results from our research contributes to creating added socio economical value through novel applications. We pay special attention to the transfer of knowledge and technologies by giving meaning and value to our scientific knowledge. Transfer of knowledge will, in many cases, be achieved in collaboration with industrial partners that also take care of the commercialisation of products. In other cases, new enterprises have been founded on the basis of knowledge or expertise developed in Wageningen. Value creation is provided in various ways:

- working with companies on co-creation and innovation
- working on societal challenges through dialogue with society
- contributing to government policy, legislation and enforcement
- sharing our knowledge infrastructure with businesses and organisations
- training experts to play a role in the development and application of our knowledge.

Spin-offs in which Wageningen University & Research is shareholder:

- A-Mansia Biotech
- Bio-Product
- Caribou Biosciences
- Ceradis
- Covaccine
- Fresh Forward
- Green Dino
- Isolife
- Spinterest
- Surfix

Spin-offs established on the basis of the IP of Wageningen University & Research, e.g.:

- Bfactory
- Biqualys
- Chaincraft
- PhenoVation
- Plant-e
- Prionics

## Our research themes

For the research institutes eight research themes encompass the entire research portfolio and link the institutes thematically with each other. This increases the synergy of our knowledge development. These themes are:

- Sustainable food and non food production
- Global food and nutrition security
- Metropolitan solutions
- Biobased and circular economy
- Healthy and safe food for healthy lives
- System earth management
- Big data technologies and methodologies
- Social innovation for value creation

## The research institutes

**Wageningen Bioveterinary Research** – Safeguarding animal and human health through biomedical and veterinary research.

**Wageningen Economic Research** – Social and economic research and advice for policy and decision-making processes.





**Wageningen Environmental Research:** For research on green growth and our living environment

**Wageningen Food & Biobased Research** – Conducts applied research for sustainable innovations in healthy food, fresh-food chains and biobased products.

**Wageningen Marine Research** – For ecological research into the sustainable use and protection of marine biological resources, coastal areas and seas.

**Wageningen Livestock Research** – Science based solutions for a sustainable and profitable livestock sector.

**Wageningen Plant Research** – Research and innovations for sustainable & healthy food and non-food plant production, use and re-use.

**RIKILT** – For research and advice regarding safe and reliable food.

**Wageningen Centre for Development Innovation** – Brings knowledge on food systems into action, by strengthening capacities for sustainable development in upcoming markets.



## Strategic investment themes

In the Strategic Plan 2014-2018 Wageningen University & Research has chosen five investment themes: strategic topics with which we can emphasise specific aspects of our expertise development. These themes are the successors to the strategic themes from our previous plan. They have been chosen in areas where various scientific disciplines in our domain intersect. These areas encompass urgent and relevant challenges that could benefit greatly from our unique combinations of expertise. By combining various scientific disciplines, new insights are created that facilitate considerable progress.

### Global One Health

Controlling the risks of disease outbreaks and reducing endemic infectious diseases are crucial to food security, public health, managing climate change and biodiversity. We use the phrase 'A Global One Health', as it reflects the interconnectedness and global nature of health care for humans, animals, plants and the environment. Many health risks can be controlled through effective interventions consisting of an adequate and varied food supply, hygiene, medicines, vaccines, vector control and crop protection.



A sustainable and shared approach requires an integrated analysis of infectious diseases, with contributions from various knowledge domains. We perform research into infectious diseases, vectors, ecology, epidemiology, healthy agriculture (animal health and plant health), healthy nutrition and intestinal flora, food security and safety, and social health issues. Through a system approach, we provide an essential contribution to improving the health of people, animals and plants.

### **Resource Use Efficiency**

A more intensive use of natural resources places increasing pressure on biological systems and on production and consumption systems in agriculture. Due to increasing global urbanisation, the distribution of the flow of energy, materials and waste is shifting on a large scale, and the quality of ecosystems (for example soil and water) is under pressure. The flow of nutrients, residue and waste is becoming concentrated in prosperous, densely populated urban areas, while elsewhere the soil is becoming depleted.



We are investing in the transition to a more sustainable and efficient system of production and consumption. We are developing new knowledge and technology to deal more efficiently with the available raw materials. We are changing primary production streams through new combinations of various sectors, product groups and raw materials. We are working on the intelligent closure of previously separate cycles of energy, materials and nutrients through the optimal use of plant and animal sources. In addition, we are contributing to a high-efficiency revolution in the use of raw biological materials through the efficient conversion and distribution of streams, raw materials and products, as well as the prevention of waste and disposal of nutrients. This transition is also accompanied by new business opportunities and risks, which were previously unknown. For the effective support of this transition, governance is crucial; new networks must be formed between the most important actors in production and consumption, innovations in institutions is required and new practices must be developed. Socio-economic analyses show how this transition can be shaped.



## Resilience

Resilience is an important property not only of natural ecosystems, agro-ecosystems, and economic and social systems, but also of biological systems such as humans, animals, plants and microbes. The resilience of a system determines its response and adaptation to sudden, non-linear changes such as rapid technological progress, climate change and socio-economic changes. Likewise, the degree to which a system can adapt is also determined by its resilience. The reactions in the systems are complex and determined by interaction with other systems and reactions between different scales.

We are already working on resilience in various scientific areas. Many of the underlying principles, such as mathematical and experimental approaches, are universally applicable. As a result, the application potential is great. This is illustrated by the current work on the resilience of livestock, tropical rain forests, food supply chains and climate-resistant agriculture. To deepen and expand the research on resilience, we are working on new interdisciplinary applications for resilience.



## Metropolitan Solutions

By 2050, 70% of the world's population will live in cities. As a result, cities will to an increasing degree face issues concerning sustainability and quality of life. This concerns aspects such as food security, mobility and logistics, the availability of water, dealing with raw materials and waste, health and well-being. The metropolitan city is simultaneously an incubator for creative solutions, a precursor of social and technological innovations in sustainability, an important player on the world stage and a specific social and ecological system. In this way, the metropolitan city also serves as a 'living lab' to design, test and disseminate solutions to these problems.

We are committed to metropolitan solutions in order to arrive at smart cities: cities and metropolitan regions that – in close relationship with the surrounding rural areas – are liveable, healthy, resilient and circular. For instance, we understand that green areas in the city play a key role in business climate, safety (water storage), liveability and health. The Amsterdam Institute for Advanced Metropolitan Solutions (AMS) and the Delta Alliance are two of the first initiatives in this field. We would like to expand these with new international initiatives and networks.





## **Synthetic Biology**

Acquired knowledge on genetic material as a building block for life has increased drastically. We can use this knowledge to design new biological systems. This offers a world of possibility for improving the quality of life. However, the application of synthetic biology is still in its infancy. At present, work is taking place only with biomolecules and single-cell organisms, such as bacteria and yeasts.

Over the long term, our research will contribute to evocative aspects such as production platforms for energy, new biologically inspired materials, refined diagnostics with the aid of biosensors and the production of pharmaceuticals. This also elicits questions about what 'life' is and how science and society can mutually ensure responsible innovation – for example when it comes to societal acceptance, controlling risks and protecting intellectual property. The extra investments in synthetic biology provide opportunities for successful international competition in this area, in which natural scientists and social scientists work closely together.





# 3

## Facts about Wageningen University & Research

Wageningen University & Research 36

Students 38

Alumni 40

Employees 42

Partnerships 44

Historical timeline 46

Turnover and Funding Sources 48

Locations 50

Output 52

1

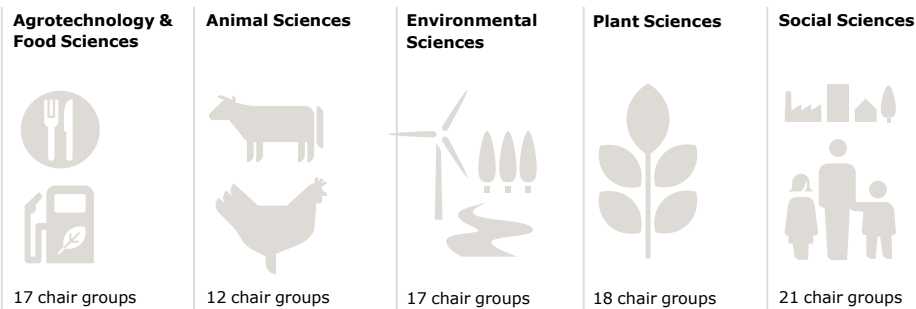
faculty

5

departments

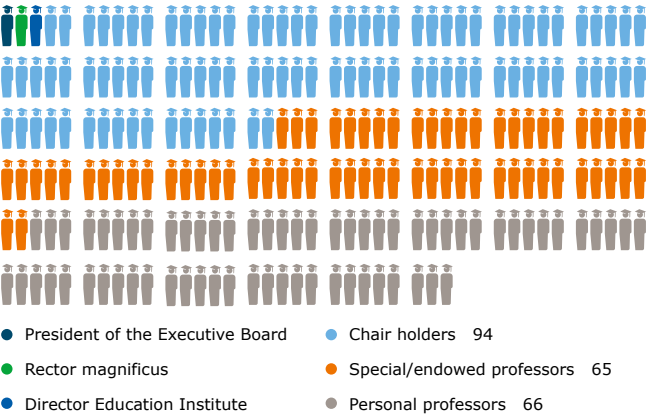
85

chair groups



professors

228



---

## 19 Bachelor's programmes

Animal Sciences  
Biology  
Biosystems Engineering  
Biotechnology  
Communication and Life Sciences  
Economics and Governance  
Environmental Sciences  
Food Technology  
Forest and Nature Conservation  
Health and Society

International Land and Water Management  
International Development Studies  
Landscape Architecture and Planning  
Management and Consumer Studies  
Molecular Life Sciences  
Nutrition and Health  
Plant Sciences  
Soil, Water, Atmosphere  
Tourism (joint degree)

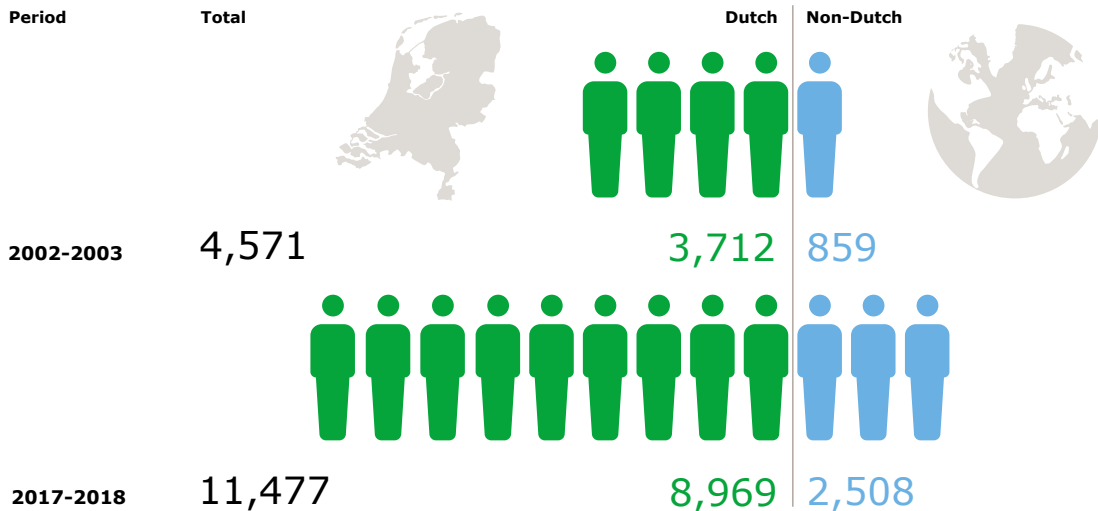
## 30 Master's programmes

Animal Sciences  
Aquaculture and Marine Resource Management  
Biobased Sciences  
Bioinformatics  
Biology  
Biosystems Engineering  
Biotechnology  
Climate Studies  
Communication, Health and Life Sciences  
Development and Rural Innovation  
Earth and Environment  
Environmental Sciences  
Food Quality Management  
Food Safety  
Food Technology  
Forest and Nature Conservation  
Geo-information Science  
International Development Studies

International Land and Water Management  
Landscape Architecture and Planning  
Leisure, Tourism and Environment  
Management, Economics and Consumer Studies  
Metropolitan Analysis, Design and Engineering  
(joint degree)  
Molecular Life Sciences  
Nutrition and Health  
Organic Agriculture  
Plant Biotechnology  
Plant Sciences  
Urban Environmental Management  
Water Technology (joint degree)

# Students October 2017

## Number of students excluding PhD students

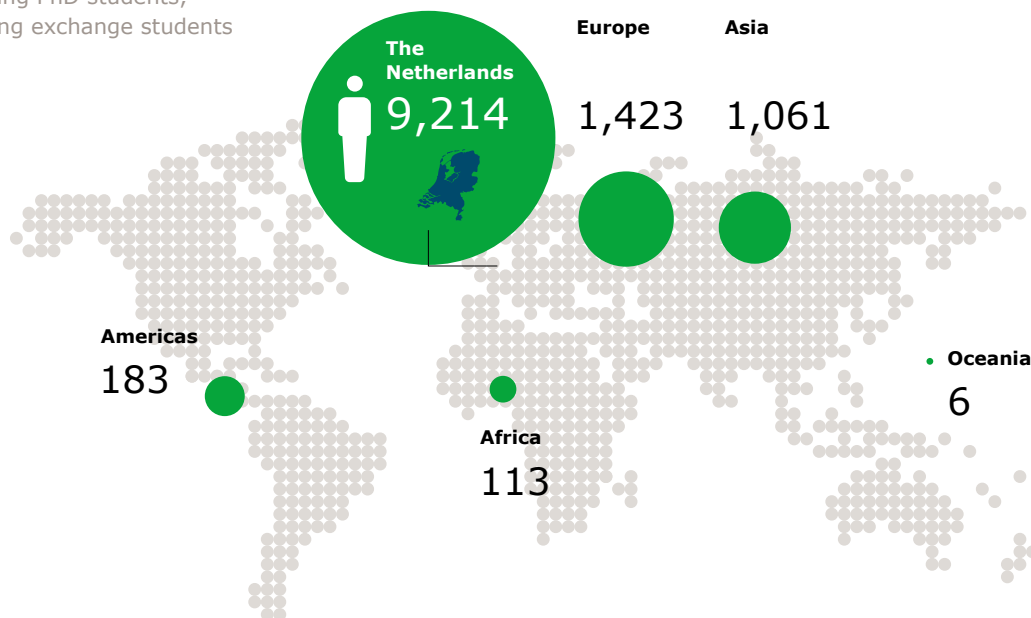


## Number of students per study phase October 2017



## Origin of students

excluding PhD students,  
including exchange students



102

nationalities

Albania, Australia, Austria, Bangladesh, Belgium, Bhutan, Bolivia, Bosnia, Brazil, Bulgaria, Cameroon, Canada, Chile, China, Colombia, Congo, Costa Rica, Croatia, Cyprus, Czech Republic, Denmark, Ecuador, Egypt, Estonia, Eritrea, Ethiopia, Finland, France, Georgia, Germany, Ghana, Greece, Guatemala, Honduras, Hungary, Iceland, India, Indonesia, Iran, Iraq, Ireland, Italy, Ivory Coast, Japan, Kazakhstan, Kenya, Kuwait, Latvia, Lebanon, Lithuania, Luxembourg, Malawi, Malaysia, Malta, Mexico, Montenegro, Morocco, Mozambique, Myanmar, Nepal, New Zealand, Netherlands, Nigeria, Norway, Oman, Pakistan, Paraguay, Peru, Philippines, Poland, Portugal, Romania, Russia, Rwanda, Saudi Arabia, Senegal, Singapore, Slovakia, Slovenia, Somalia, South Africa, South Korea, Spain, Sri Lanka, Sudan, Suriname, Sweden, Switzerland, Syria, Taiwan, Tanzania, Thailand, Tunisia, Turkey, Uganda, Ukraine, United Kingdom, United States of America, Uzbekistan, Vietnam, Yemen, Zambia, Zimbabwe



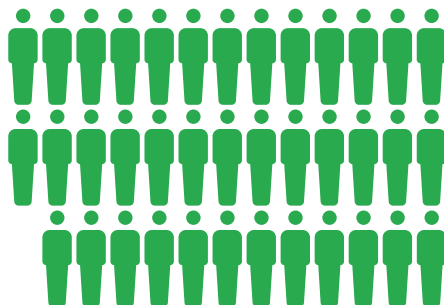
# Alumni

October 2017

## Number of alumni

50,020

### The Netherlands



38,543

### Europe



3,069

### Outside Europe



8,408

## Average graduates per year



### Period

### master

### PhD gained

1970-1979

310

33

1980-1989

772

54

1990-1999

1,049

140

2000-2009

923

202

2010-2017

1,433

254

## Living and/or work location



The Netherlands | Europe | Outside Europe

Work location



Dutch | Non-Dutch

Working abroad



## Distribution male/female



Male | Female

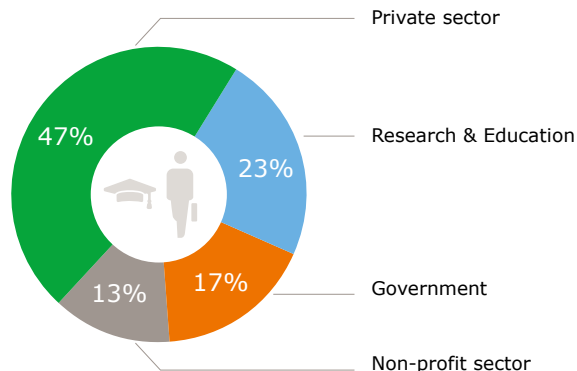
Dutch alumni



Non-Dutch alumni



## Market sectors in which Wageningen alumni work



## Labour market opportunities

62%

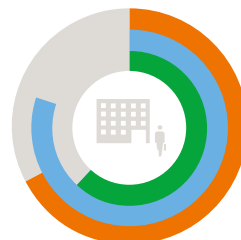
find work within three months after graduation

80%

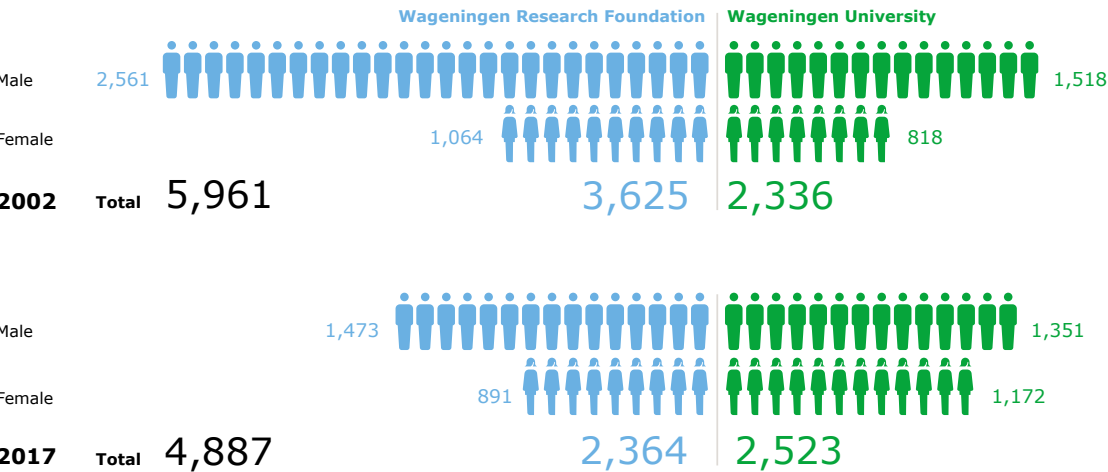
find work within one year after graduation

67%

of alumni who found work within one year, work at MSc Level

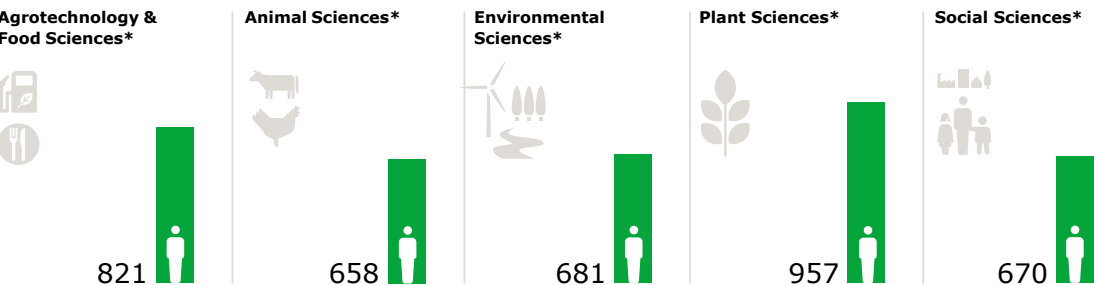


## Number of employees in fte



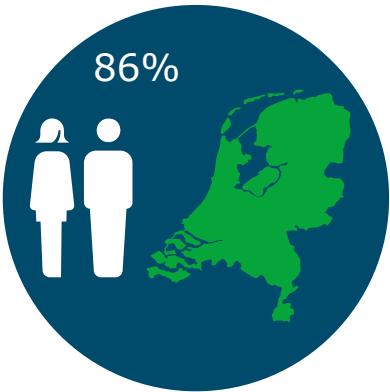
## Number of employees per organisational unit (2017, in fte)

\* Sciences groups

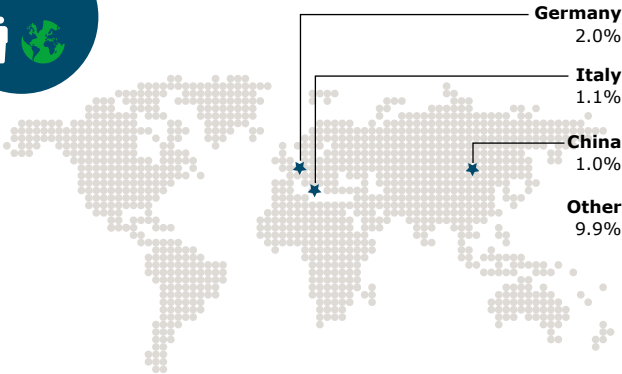


Nationalities of employees in fte

Dutch



Non-Dutch



Wageningen Marine Research



RIKILT



Wageningen Academy



Corporate Staff



Facility Services



# Examples of collaborative partnerships

- **AlgaeParc**

This facility for micro-algae research on the edge of Wageningen Campus is financed with money received from the Dutch Ministry of Economic Affairs, the Province of Gelderland and Wageningen University & Research. The research itself is funded by users.

*[www.wur.eu/algaeparc](http://www.wur.eu/algaeparc)*

- **Wageningen Shared Research Facilities**

Wageningen Shared Research Facilities utilises facility-sharing to give access to Wageningen University & Research's state-of-the-art research facilities to researchers from all organisations.

*[www.wur.eu/shared-research-facilities](http://www.wur.eu/shared-research-facilities)*

- **Top sectors Horticulture & propagating materials and AgroFood**

Top sectors are areas in which the Dutch business community and research centres excel on a global scale. The business community, universities, research centres and the Dutch government work together on knowledge and innovation in order to continue to strengthen this position of excellence.

- **Dairy Campus**

Educational institutions, research institutes and governmental bodies work together within Dairy Campus to create a meeting space for study programmes, work placements and graduation procedures and for research and innovative projects in the dairy sector.

*[www.dairycampus.nl](http://www.dairycampus.nl)*

- **FoodValley Foundation**

Food Valley NL works in proximity to and in cooperation with many national and international food companies and highly-respected knowledge institutes to bring knowledge and entrepreneurship together in a targeted way, thereby creating a breeding ground for further innovation from within Wageningen University & Research.

*[www.foodvalley.nl](http://www.foodvalley.nl)*

- **FoodValley region**

Regio FoodValley is a partnership between eight municipalities totalling 330,000 residents. This partnership has the goal of developing the FoodValley region into Europe's leading agro-food centre and into a leading international region for knowledge and innovation in the area of healthy, sustainable food.

*[www.regiofoodvalley.nl](http://www.regiofoodvalley.nl)*

---

- Wetsus

Wetsus, the centre for sustainable water technology, is a research institute which unites the forces of the business community and leading universities and research institutes. As a top technological institute, Wetsus develops innovative, sustainable water technologies.

Together with three universities, more than 40 companies – multinationals and small and medium-sized businesses – participate in Wetsus.

*[www.wetsus.nl](http://www.wetsus.nl)*

- Science Shop

The Science Shop of Wageningen University & Research mediates research questions from civic and community organisations, action groups and associations in the areas of sustainable agriculture, rural development, nature & the environment and consumers & food.

*[www.wur.eu/scienceshop](http://www.wur.eu/scienceshop)*

*We are well aware that our partners need to achieve genuine social breakthroughs*

# Historical timeline

## Wageningen University

**1876**

The state takes over the local council's Agricultural College in Wageningen: the start of National Agricultural Education in The Netherlands.

**1904**

Wageningen education has been developed to a higher level and the institution is now called the National Higher College of Agriculture, Horticulture and Forestry.

**1918**

Wageningen's status as an institute of higher education is legally ratified, and it becomes the National Agricultural College on 9 March 1918.

**1956**

Post-war developments in education and research necessitate new legislation: the Agricultural College Statute.

**1986**

In accordance with amendments to the Academic Education Act, the Agricultural College is now called the Agricultural University.

**1968**

From now on the Agricultural College is subject to the same law that governs other universities: the Academic Education Act.

## DLO

**1877**

Foundation of the first agricultural research station in Wageningen (predecessor to the current research institutes).

**1888**

The National Institute for Fisheries Studies is set up in IJmuiden (now part of Wageningen IMARES).

**1898**

Establishment of the National Agriculture Testing Station in Maastricht.

**1919**

A forestry research station is established (now part of Alterra).

**1903**

Establishment of the National Dairy Station in Leiden.

**1899**

Botanical gardens are established at Westland and Boskoop (now part of PPO). The government agricultural research station for seed inspection (part of the current PRI) becomes a separate organisation.

**1936**

Establishment of the Institute for Research and Processing of Fruit and Vegetables in Wageningen (now part of Agrotechnology & Food Sciences Group).

**1938**

Establishment of the DLO Research Institutes.

**1940**

Establishment of the Agricultural Economics Institute (LEI).

**1976**

Establishment of RIKILT. The result of a merger of the National Agriculture Testing Station in Maastricht and the National Dairy Station in Leiden.

**1971**

Establishment of PHLO (now part of Wageningen Academy).

**1951**

Establishment of the International Agricultural Centre (IAC).



## Wageningen University & Research

### 1997

The formation of Wageningen University and Research Centre (Wageningen UR) begins; the Agricultural University merges with the DLO Research Institutes and the Institutes for Applied Research.

### 1998

Official launch of Wageningen UR, following a staff merger. The Agricultural University officially becomes Wageningen University.

### 2000

Alterra and PRI are established within Wageningen UR.

### 2001

PPO, IAC, PV, ILRI and ISRIC become a part of Wageningen UR.

### 2002

CIDC Lelystad is established.

### 2002

Decision to form campus.

### 2008

CIDC Lelystad and the Infectious Animal Diseases section of the Animal Sciences Group join together to form the Central Veterinary Institute.

### 2007

Opening of Wageningen Campus and Forum.

### 2006

RIVO, in cooperation with parts of Alterra and the Department of Ecological Risks of TNO, establishes Wageningen IMARES.

### 2005

IAC, the North-South Centre and the 'Europadesk' merge to become Wageningen International.

### 2004

Cooperation VHL Van Hall Larenstein University of Applied Sciences becomes part of Wageningen UR.

### 2003

PHLO merges with Wageningen Business School.

### 2010

NIOO establishes itself at the Wageningen Campus.

### 2010

New construction of RIKILT, arrival of nVWA (Netherlands Food and Consumer Product Safety Authority) labs.

### 2011

Opening of AlgaeParc.

### 2012

Wageningen University has the highest number of students in its history, and growth continues.

### 2012

Zodiac comes to the Campus.

### 2012

Opening of Impulse.

### 2012

Start of disengagement of Van Hall Larenstein

### 2018

Wageningen University & Research celebrates 100th anniversary.

### 2016

Introduction new brand name: Wageningen University & Research.

### 2016

Opening Helix and Plus Ultra buildings on campus.

### 2013

FrieslandCampina Innovation Centre establishes itself at the Wageningen Campus.

### 2013

Stoas establishes itself at the Wageningen Campus.

### 2013

Opening of Orion.

# Financial figures

Agrotechnology & Food Sciences Group  
Turnover: € 97 mln

Animal Sciences Group  
Turnover: € 97 mln

Environmental Sciences Group  
Turnover: € 86 mln

Plant Sciences Group  
Turnover: € 123 mln

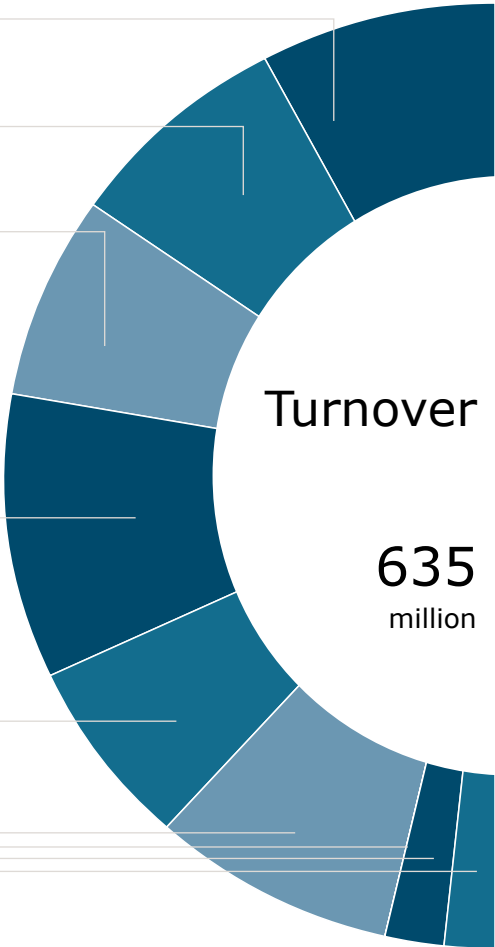
Social Sciences Group  
Turnover: € 83 mln

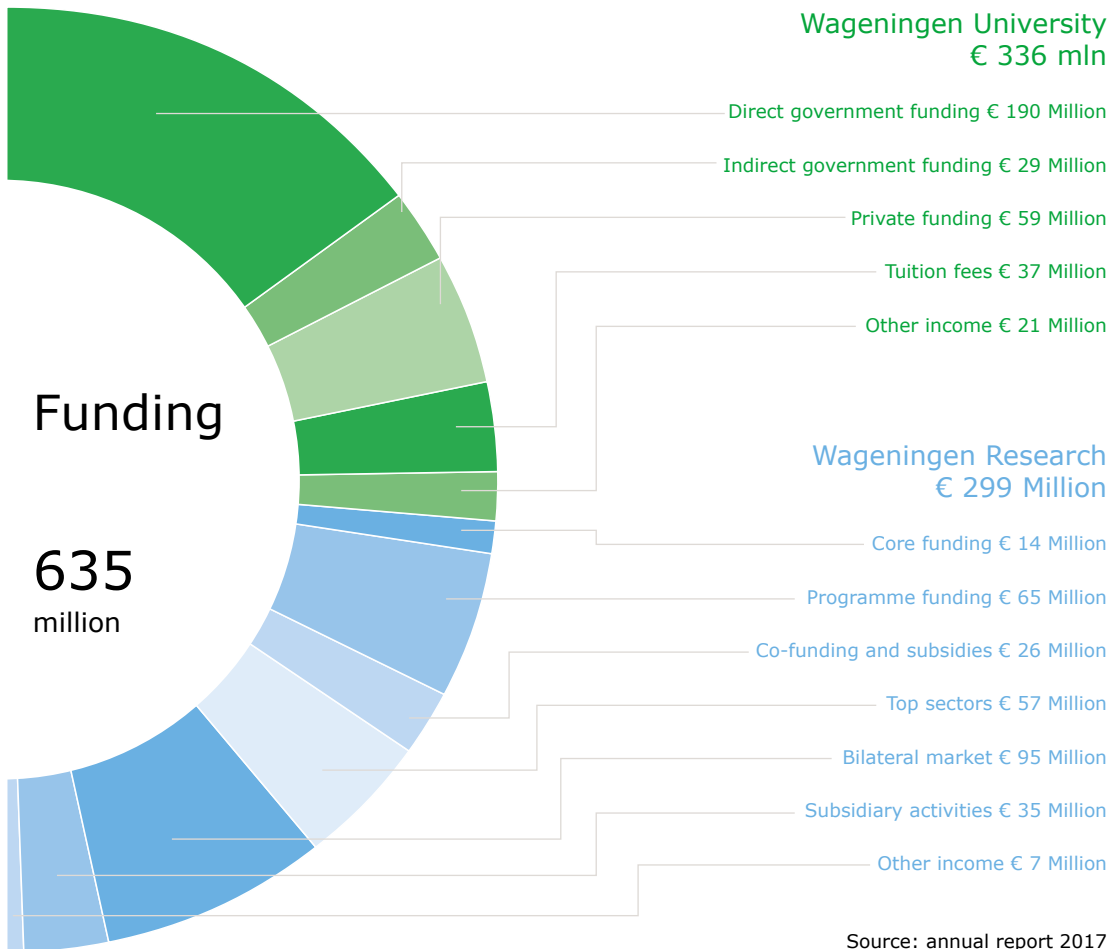
Central departments  
Turnover: € 100 mln

Wageningen Academy  
Turnover: € 2 mln

RIKILT – Institute of Food Safety  
Turnover: € 25 mln

Wageningen Marine Research  
Turnover: € 22 mln





Source: annual report 2017

# Locations

## Locations in the Netherlands

**Wageningen University**

Wageningen, 1

**Wageningen Academy**

Wageningen, 1

**Agrotechnology &**

**Food Sciences Group**

Wageningen, 1

**Animal Sciences Group**

Hengelo (Gld.), 2

Leeuwarden, 5

Sterksel, 4

Wageningen, 1

**Dairy Campus**

Leeuwarden, 5

**Environmental Sciences Group**

Renkum, 24

Wageningen, 1

**Wageningen Marine Research**

IJmuiden, 6

Yerseke, 7

Den Helder, 8

**Plant Sciences Group**

Bleiswijk, 10

Lelystad, 3

Marwijksoord, 11

Nagele, 12

Randwijk, 13

Valthermond, 14

Vredepeel, 15

Wageningen, 1

Westmaas, 16

Wijnandsrade, 26

**RIKILT**

Wageningen, 1

**Social Sciences Group**

Alkmaar, 17

Drachten, 18

Dalfsen, 19

Den Haag, 9

Goes, 20

Haaksbergen, 21

Huissen, 22

Lelystad, 3

Meijel, 25

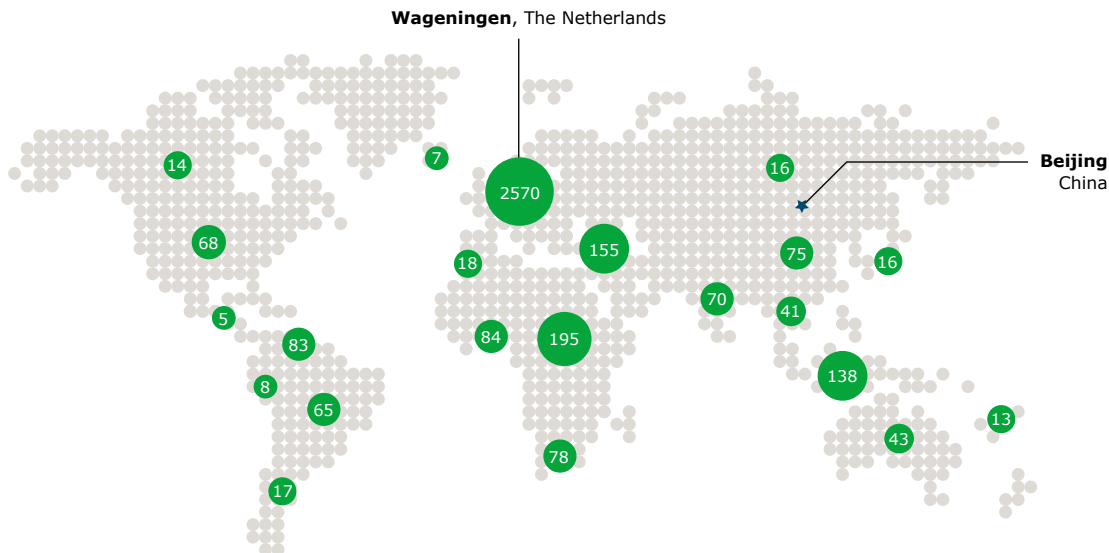
Oisterwijk, 23

Wageningen, 1



---

## Wageningen worldwide



Wageningen University & Research is active in many regions of the world. From China to Chile and from Ethiopia to the Arctic, we work together with partners in research programmes.

# Output/scientific prominence

## Output 2017

PhD theses

295

Scientific publications in journals  
with an impact factor > 20

(e.g. Nature, Science)

36

## Veni, Vidi, Vici in 2017

Veni      Vidi      Vici

9      3      1

## Rankings

WUR ranking in  
QS World University Rankings  
2018-2019

*Agriculture and Forestry*

1

WUR ranking in  
QS World University Rankings  
2018-2019

*Environmental Sciences*

8

WUR ranking in  
National Taiwan University  
Ranking, World Universities  
2017-2018

*Agriculture*

1 (5 years running)

WUR ranking in  
Times Higher Education  
World University Rankings  
2017-2018

64

WUR ranking in  
Keuzegids in full time  
university education 2018

1 (13 years running)

WUR ranking in  
Shanghai Ranking of World  
Universities 2018

*Food Science & Technology*

1

WUR ranking in  
National Taiwan Ranking 2018  
*Agricultural Sciences*

*& Environment & Ecology*

1

WUR ranking in  
National Taiwan Ranking 2018  
*Plant Sciences & Animal Sciences*

2





# Colophon

## Publisher

Wageningen University & Research, Corporate Communications & Marketing

## Design, photo editing and illustrations

Wageningen University & Research, Communication Services

## Photography

Guy Ackermans (12, 15), AFNR / Shutterstock.com (29), africa924 / Shutterstock.com (10), Petra Appelhof (cover, 4, 15), Stephen Bures / Shutterstock.com (23), Getty Images (15), Marte Hofsteenge (14), LiteChoices / Shutterstock.com (6), Ewout Knoester (10), LiteChoices / Shutterstock.com (8), meunierd / Shutterstock.com (30), Neil Palmer / CIAT (10), Sam Rentmeester (20, 34), Alf Ribeiro / Shutterstock.com (29), Joris Schaap (11, 13), Shutterstock, Wageningen University & Research

September 2018

[www.wur.eu](http://www.wur.eu)





---

[www.wur.eu](http://www.wur.eu)

---