

Research Data Management

Data storage and archiving

Hilda van der Pol (Library), Stephen Janssen (IT),
Marleen Noomen (Library)

1st Data Stewardship @WUR network meeting, November 8, 2018

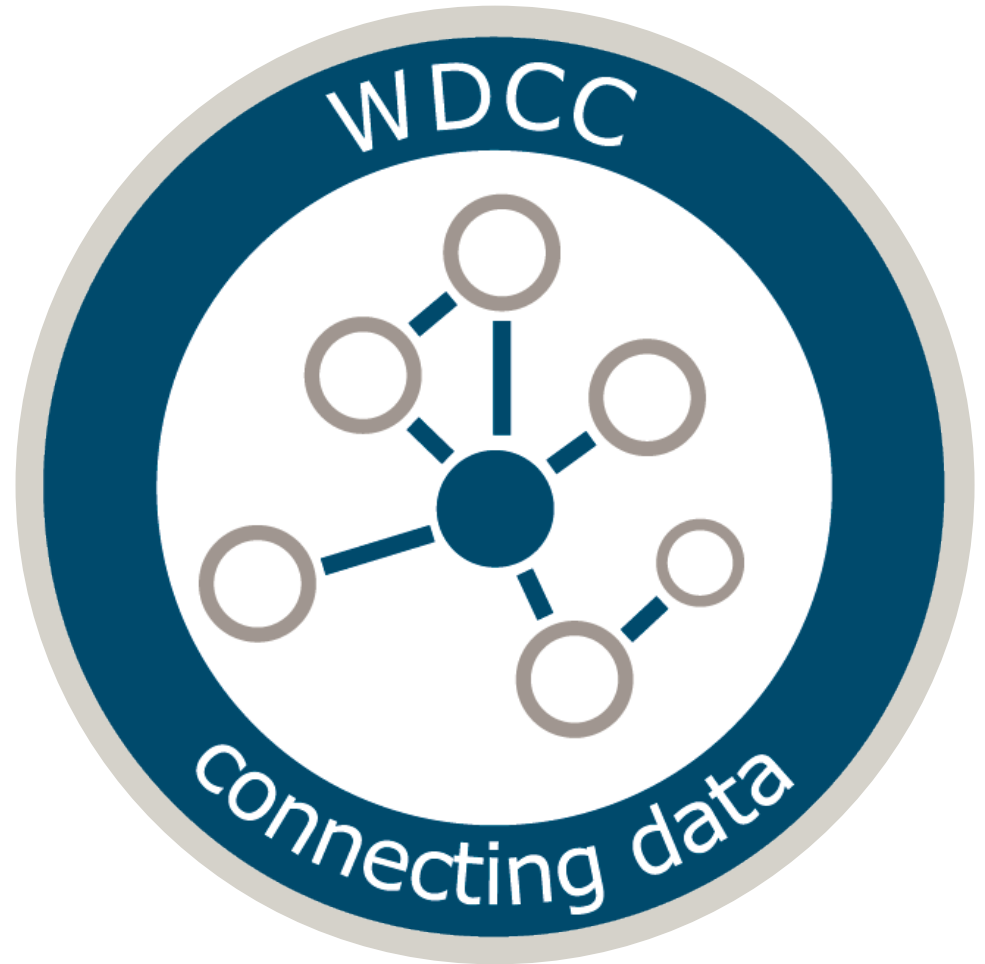


Questions?

Mail us:

data@wur.nl

wur.nl/data



How can I work as safely as possible

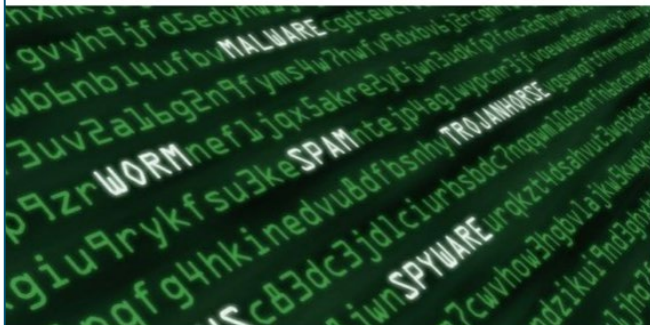


ORGANISATIE - 4 NOVEMBER 2015

WUR is interessant voor spionnen

tekst: Roelof Kleis

Spionage is geen ver-van-mijn-bedshow. Het gebeurt hier en nu en Wageningen UR is een gewild doelwit. Opletten dus, vooral met het openen van mail.



[G+](#) [Tweeten](#) [in Share](#) [f Delen](#) [0](#)

Veel meer kun je als eenvoudig medewerker of student niet echt doen, blijkt na een lezing van Sander. Zijn achternaam blijft in nevelen gehuld. Sander is namelijk van de AIVD. 'Ik heb liever niet dat jullie foto's maken of berichten posten.' Hij geeft in het kader van de actieweek ProtectIT voor een twintigtal toehoorders in Radix een lezing over cyberspionage.

You are the key to our information luidt de slogan van de IT-campagne om ons beter te wapenen tegen spionage via internet. Sander draait het om: *You are the key to their information*. En dat is meteen de kern van zijn verhaal. Sinds het internet zijn wij allemaal tamelijk gemakkelijke doelwitten voor spionnen. Spionnen op afstand die via de computer ons

Tech / Internet

Gepubliceerd: 9 augustus 2012 14:22
Laatste update: 9 augustus 2012 20:19

Deel: 

Dertien universiteiten getroffen door beveiligingslek

AMSTERDAM - Dertien universiteiten blijken kwetsbaar te zijn voor een datalek in de website. In sommige gevallen waren persoonsgegevens toegankelijk.



Foto: Thinkstock

Dat ontdekten de scholieren Daan en Olivier.

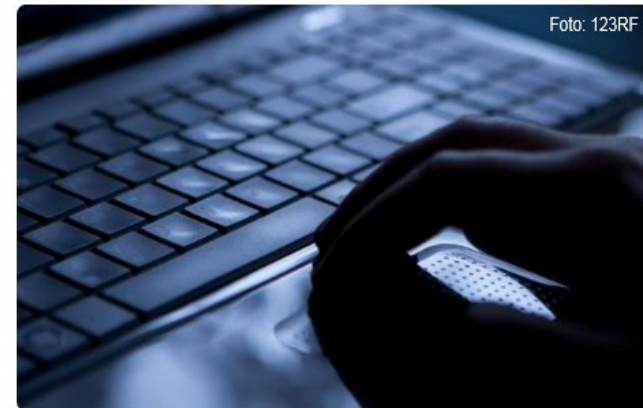
Tijdens het testen van de websites kwetsbaarheden troffen de scholieren aan. Iedere keer bleef eenzelfde type lek te gaan, een

Dat betekent dat er een zwakte in de website zit waarvoor gecommuniceerd kan worden met de database. Normaal is de database volledig afgeschermd.

De getroffen instellingen zijn de Radboud Universiteit, Rijksuniversiteit Groningen, TU Delft, Open Universiteit, Universiteit Twente en de universiteiten van Tilburg, Utrecht, Rotterdam, Wageningen, Amsterdam, Eindhoven, Maastricht en Leiden.

Donderdag 06 september 2018 | Het laatste nieuws het eerst op NU.nl

[NU.nl](#) > [Tech](#) > [Internet](#)



'Nederlandse universiteiten nog steeds in vizier van Iraanse hackers'

Gepubliceerd: 24 augustus 2018 10:54

Security - Do's en don'ts

1. Do use the WUR email account only for work related matters
2. Do use WUR IT services (W:, Sharepoint, WURclient)
3. Only use file sharing via browser not via sync client and with care
4. Do not use external HD's, memory sticks or NAS
5. Don't click on links in dubious e-mails
6. Only open email attachments of people you know

Can I use Dropbox or Google drive? **No!**

Dropbox / google drive (free personal solutions)	Onedrive for Business (paid enterprise solutions)
WUR has no control in privacy policy. Dropbox is allowed to look into your metadata.	SURF checked the policy. Microsoft doesn't use your data
Create your own account	Connect via WUR-account
If employee leaves WUR, data is gone	WUR-IT can access data in specific cases
Data is spread around the world	Data is stored in data centers in Europe
Public data	Confidential data. Do not sync on non-wurclients!
Free of charge, few GB, Adoption is very good	Free of charge, 1 TB, easy sharing with microsoft users & WUR-users

Storage solutions (W: M: drive)

■ Secure storage facilities:

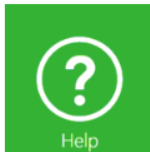
- M:\
Personal storage
only accessible by yourself, 50 GB
- W:\
(sometimes also referred as N:\ or other names)
Department, section, team, project share
accessible by allowed WUR-employees.
Expandable to > PB (>1000TB)

Type	Costs	Specs
Enterprise File storage	€ 1,20 / GB	Fast, Double, Disaster backup
Massive File storage	€ 60 / TB	Single, No disaster backup
Massive File storage DR	€ 100 / TB	Single, Disaster backup

Storage solutions (sharepoint teamsites)



My Start Page



Search...

Search for content on all Team Sites (new environment) on which you have at least READ permission

Team Sites I'm following

Task Force RDM Start Zeggenschap Criteria Zoeken op deze site...

Documenten
Afbeeldingen
Lijsten
Taken
Projectomschrijving
Projectteam
Discussies
Algemene discussie
Enquêtes
Prullenbak
Alle site-inhoud

Projectomschrijving

Titel	Projectleider	Opdrachtgever	Omschrijving	Start	Einde	Nummer
Titel	Projectleider	Task Force Research Data Management				
Opdrachtgever		Ringersma, Jacquelyn				
Omschrijving			Geef hier een korte samenvatting van het project: Doelstelling, etc.			
Start						
Einde						
Nummer						7705640028-06

Basis documenten

Type	Naam	Gewijzigd door
	20161003_Projectplan Zeggenschap en gebruiksrechten onderzoeksdata	Jetten, Theo
	Terms of Reference for Wageningen University	Smelik, Jos

Overige documenten

Type	Naam	Gewijzigd door
------	------	----------------

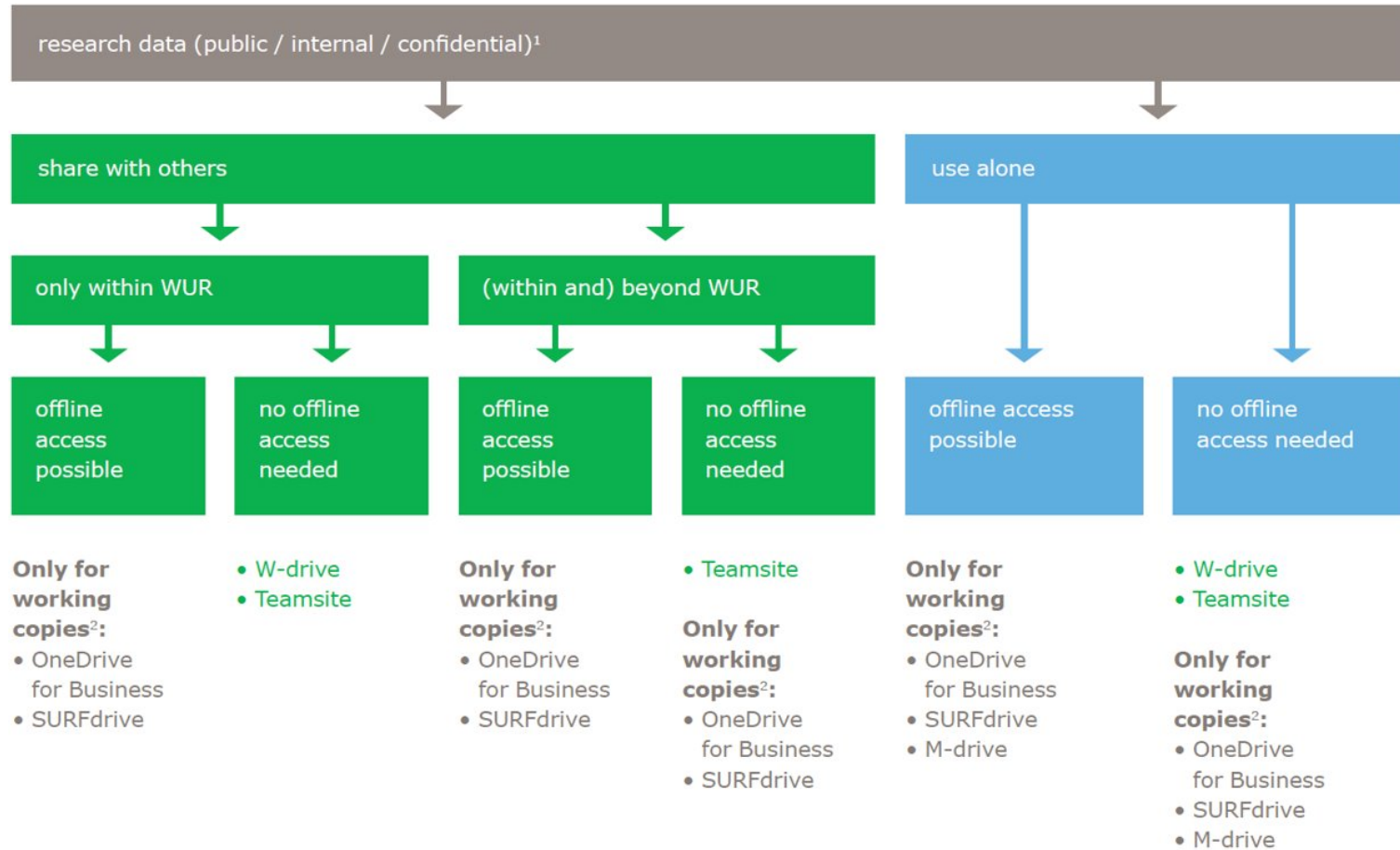
Nieuws
Er zijn momenteel geen actieve aankondigingen. Klik op Nieuwe aankondiging toevoegen als u een nieuwe aankondiging wilt toevoegen.

Projectteam

Bewerken	Teamid	Rol	Afdeling
	Fest, Ellen	Medewerker	CIM
	Gernert-Beaumont, Claire van	Medewerker	Overig
	Huijgen, Carolien	Medewerker	Overig
	Janssen, Stephen	Medewerker	FB-IT
	Jetten, Theo	Medewerker	CIM
	Pingen, Frans	Medewerker	Overig
	Ringersma, Jacquelyn	Projectleider	DPC
	Zeeland, Hilde van	Medewerker	CIM

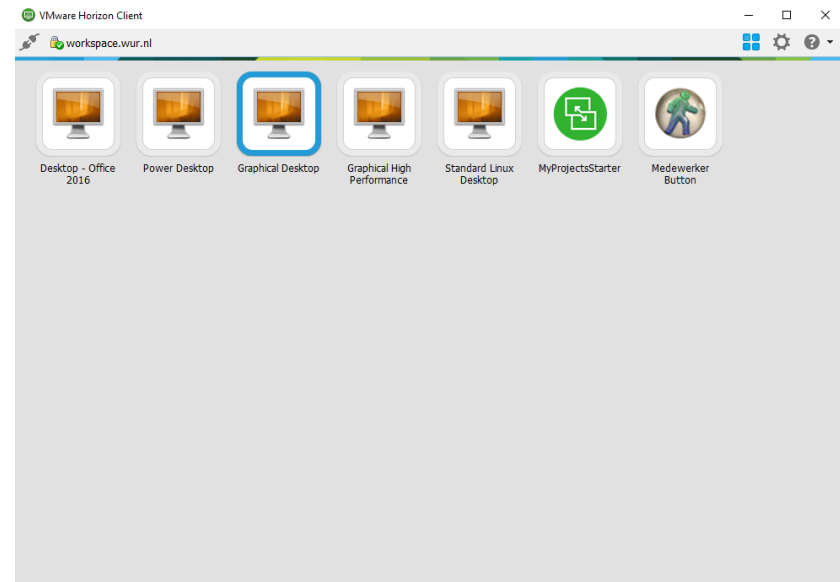
Gebeurtenissen
Er zijn geen items om weer te geven in deze weergave van de lijst Gebeurtenissen. Klik op Nieuw als u een nieuw item wilt toevoegen.

Storage solutions (Decision aid)



Work off campus

- myworkspace.wur.nl
 - Working elsewhere: anytime, anywhere, any device
- VPN in the near future
- No internet:
 - Onedrive for Business
 - Encrypted usb-disk

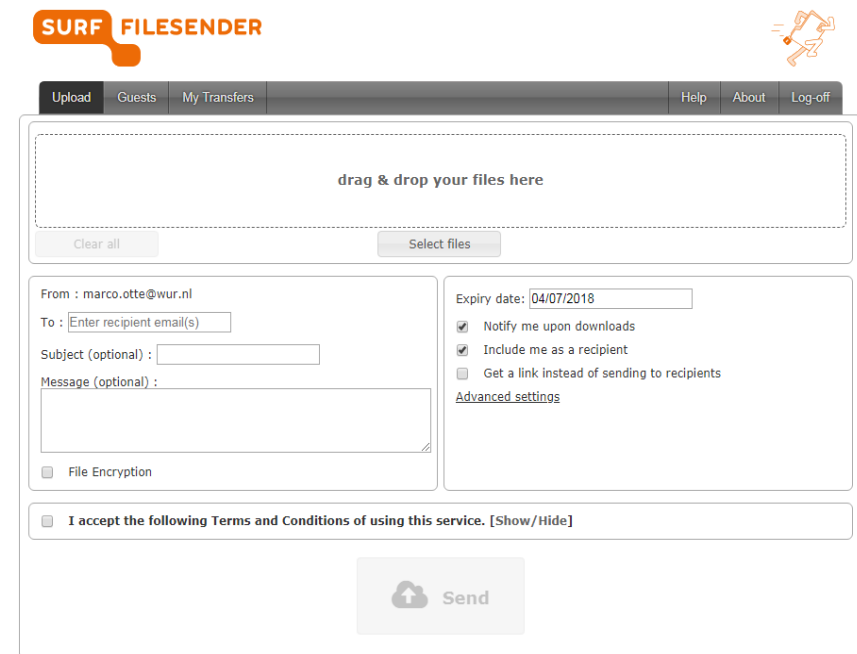


How can I transfer large files to external partners

- Providing an alternative to WeTransfer:

www.SURFfilesender.nl

- up to 500 GB (unencrypted)
- up to 250 GB (encrypted)
- single sign on



The screenshot shows the SURF FILESENDER web interface. At the top, there's a navigation bar with 'Upload', 'Guests', 'My Transfers', 'Help', 'About', and 'Log-off'. Below this is a large dashed box with the text 'drag & drop your files here'. To the left of this box are 'Clear all' and 'Select files' buttons. Below the drop zone, there's a form for sending files. The 'From' field is pre-filled with 'marco.otte@wur.nl'. The 'To' field has a placeholder 'Enter recipient email(s)'. There are optional fields for 'Subject' and 'Message'. A 'File Encryption' checkbox is present. To the right of the message field, there's an 'Expiry date' field set to '04/07/2018' and three checkboxes: 'Notify me upon downloads' (checked), 'Include me as a recipient' (checked), and 'Get a link instead of sending to recipients' (unchecked). Below these is a link to 'Advanced settings'. At the bottom of the form, there's a checkbox for 'I accept the following Terms and Conditions of using this service. [Show/Hide]'. A large 'Send' button with a cloud icon is at the bottom right.

Problems? Mail to: support@surffilesender.nl

Selecting an archive

- Preferably a domain-specific archive
- Ask you colleagues
- Re3data.org
- 4TU.Center for Research Data, or DANS-EASY
- Condition of journal

Selecting data for archiving

- In principle: raw data from your research
- Processed data based on existing data
- Processed data when raw data is too large
- Not: data that can easily be reproduced
- Not: (publicly) available data

Selecting data for publishing

- Data underlying a publication (WUR policy)
- Anonymized data
- Data that can be valuable to others

Large dataset archive

- Domain-specific archive
- 4TU.Center for Research Data or DANS-EASY: up to 2 TB
- >2 TB: Library is working on a solution

Costs of archiving

- 10 GB free, € 4.50 per GB (4TU)
- Funder: put it in your proposal!
- Sometimes journal
- Library: up to 1 GB per research group per year

Licenses / open access

- Anonymized data
- DANS-EASY: access only after permission
- Restricted/closed (i.e. Zenodo)
- Archiving without publishing
- Creative Commons: CC0 or CC-BY

Storage



Data storage security

- How can I work as safely as possible (Do's & Don'ts)?
- My laptop is infected by a virus, can we restore the data?
- Can I use Dropbox or Google Drive during my research?



Costs of storing data

- Why is storage so expensive at WUR compared to Mediamarkt?



Safe storage of data within WUR

- Where can I store huge datasets (terabytes) during my research?
- Can I use the W:\ and M:\ drive while I'm not on campus?
- Which safe storage solutions are available and how do I know what to use?



Collaboration and sharing of data

- How can I share data within WUR?
- How can I share data with external companies?
- How can I transfer large files to external partners?

Archiving

Selecting an archive

- Which archive should I select?



Selecting data for archiving

- What data should I archive/publish?



Large dataset archive

- How and where can I archive/publish a large dataset?



Preparation of a dataset for archiving

- How to prepare a dataset for archiving/publishing?



Costs of archiving

- How to cover the costs of archiving/publishing?
- How much does it cost to archive my data?



Licenses/open access

- Which license do I choose for my data?
- My data is confidential. Can it still be archived?

Guidelines

1. Read the topics and example questions
2. Select one or two topics or questions that interest you, or of which you want to hear more
3. Stick your two stickers next to your selected topic(s) or question(s). Any selection is okay!
4. If you have another question that we didn't write down, please take a yellow post-it and stick it with your question on the poster
5. The topics that receive most stickers will be discussed.

Workshop results

The poster is divided into two main sections: **Storage** and **Archiving**.

Storage

- Data storage security** (lock icon)
 - How can I work as safely as possible (Do's & Don'ts)?
 - My laptop is infected by a virus, can we restore the data?
 - Can I use Dropbox or Google Drive during my research?
- Costs of storing data** (\$) (dollar sign icon)
 - Why is storage so expensive at WUR compared to Mediamarkt?
- Safe storage of data within WUR** (server rack icon)
 - Where can I store huge datasets (terabytes) during my research?
 - Can I use the W:\ and M:\ drive while I'm not on campus?
 - Which safe storage solutions are available and how do I know what to use?
- Collaboration and sharing of data** (people icon)
 - How can I share data within WUR?
 - How can I share data with external companies?
 - How can I transfer large files to external partners?

Archiving

- Selecting an archive** (question mark icon)
 - Which archive should I select?
- Selecting data for archiving** (question mark icon)
 - What data should I archive/publish?
- Large dataset archive** (server rack icon)
 - How and where can I archive/publish a large dataset?
- Preparation of a dataset for archiving** (checkmark icon)
 - How to prepare a dataset for archiving/publishing?
- Costs of archiving** (\$) (dollar sign icon)
 - How to cover the costs of archiving/publishing?
 - How much does it cost to archive my data?
- Licenses/open access** (open access icon)
 - Which license do I choose for my data?
 - My data is confidential. Can it still be archived?

At the bottom of the poster are the logos for **WAGENINGEN UNIVERSITY & RESEARCH** and **WUR**.