

Discard atlas of the North Sea

R. Verkempynck

Discards workshop
16-17 March, Bergen



Discard Atlas of North Sea fisheries

IMARES Wageningen UR
Wageningen, August 2014



Why a Discard Atlas

- Article 14 of the new basic regulation: *'Member States may produce a 'discard atlas' showing the level of discards in each of the fisheries covered by the landing obligation'*.
- June 2013: Scheveningen Directors agreed to establish a working group for discard mapping in the North Sea
- Ambition:
 - Document current knowledge
 - Strategies to mitigate discards

Existing examples

■ Discard atlas:

- Ireland
- Belgium

■ Examples:

- “heat maps”
- Variability in time and space?

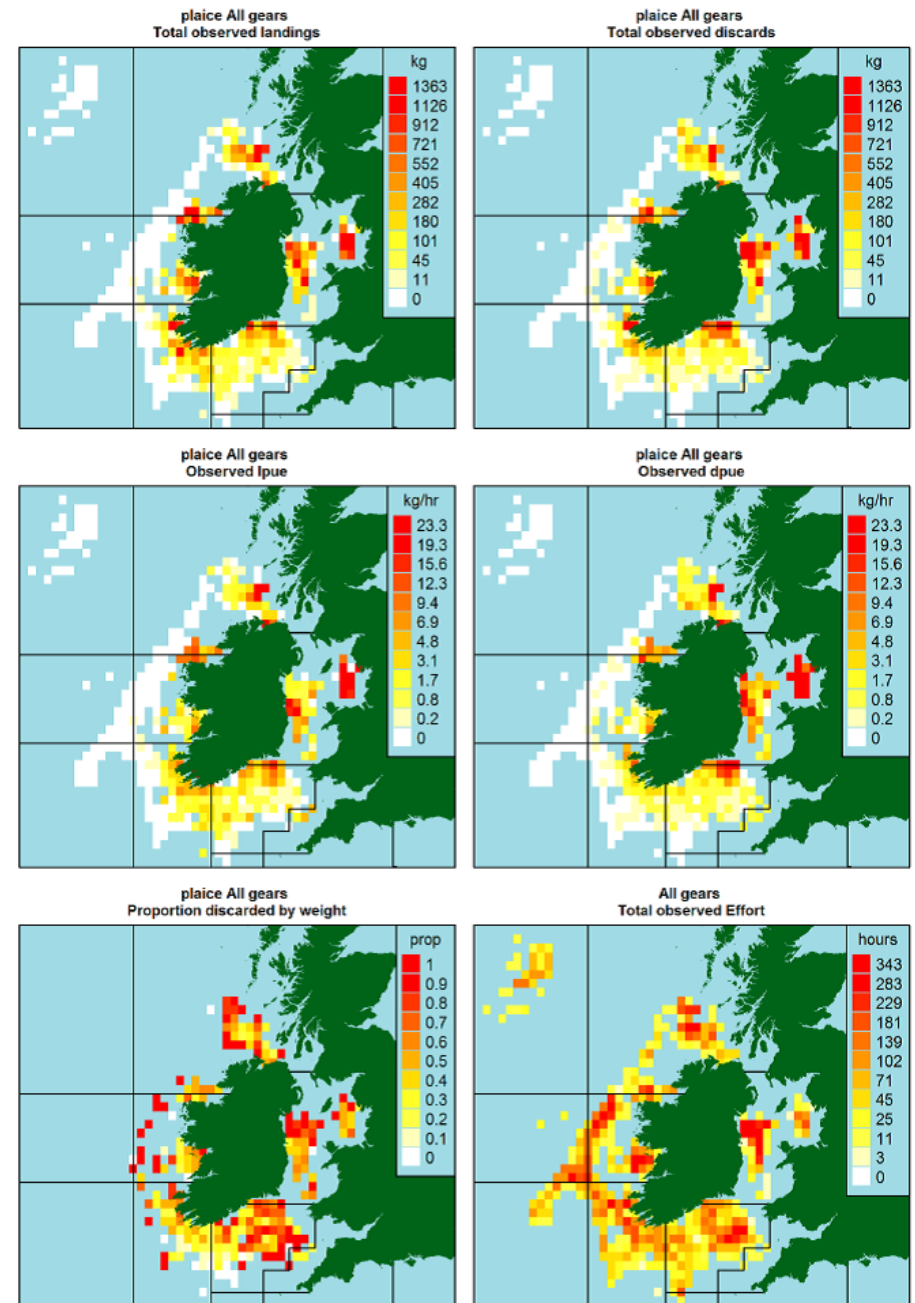


Figure 3.8 Observed Plaice Landings, Discards and effort from Discard Sampling Trips carried out between 1995-2009.

Joint Discard Atlas Working Group

- Scientist and policy-makers from the associated Member States
- WG decided:
 - Cover all major fisheries in the North Sea
 - Publicly available data source
 - Clear description of procedures for getting information - should be reproducible
 - Presentation in tabular format

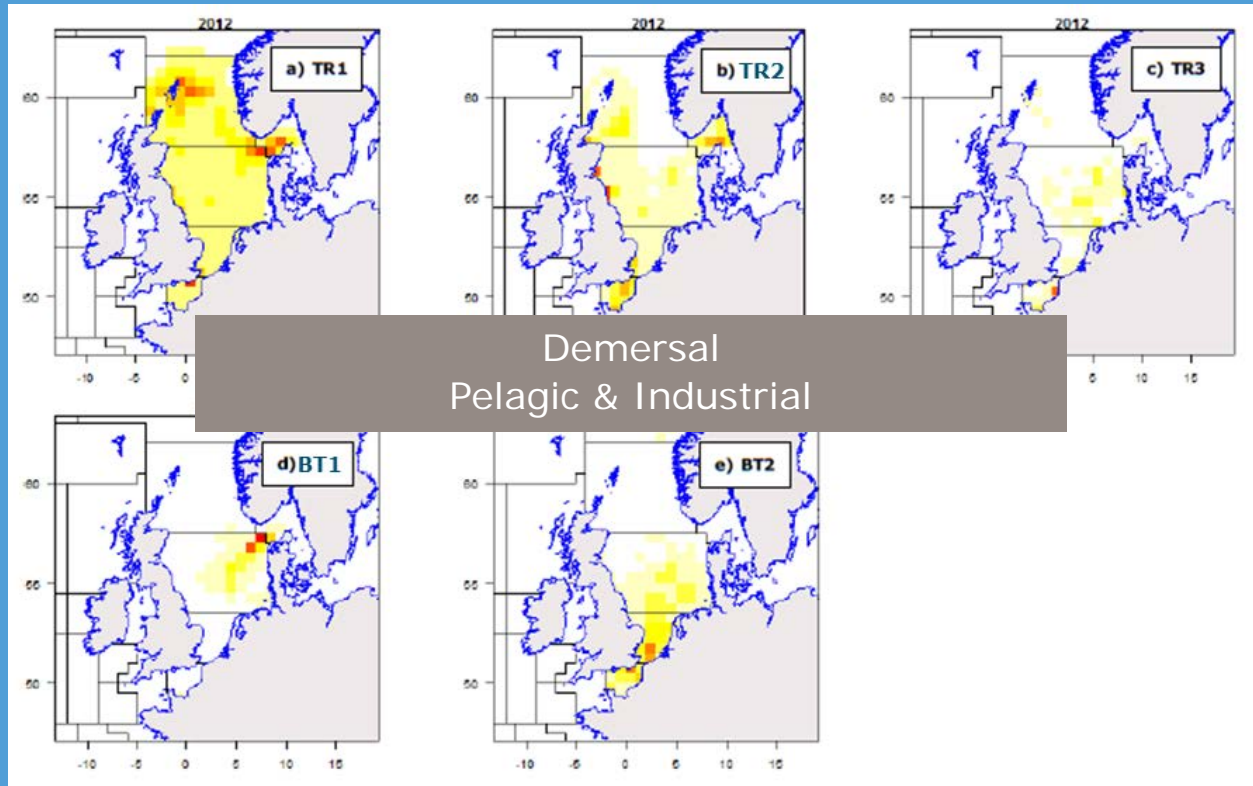


Photo: Martin Pastoors



Photo: Martin Pastoors

Description of area & fisheries (Ch2)



Description of data and procedures (Ch2 ctd)

LOGBOEK VAN DE EUROPESE GEMEENSCHAPPEN

Nummer(s) (2) _____ Naam (namen) van de kapitein (3) _____

Vareek (4) _____ uit _____

Brugsteek (5) _____ in _____

Aanvoer (6) _____ in _____

Vissing (8) _____

Maatswijdte (9) _____

Afdeelingen (10) _____

Bij overlanding (7) _____

Dag _____ Maand _____ Jaar _____

Naam en/of roepnamen _____

Buiten op de romp aangebrachte identificatie: _____

Nationaliteit van het oorspronkelijke vaartuig: _____

Postcode (14) _____

Aan boord gehouden vangst, per soort, in kg levend gewicht of aantal eenden (15)

Datum (11)	Aantal eenden (12)	Vissing (13)	Soort	Sol	Ple	DAB	Flc	Fvx	Bil	Vk	Gou	Partaf
10	10	2	2	100	100	110	110	110	110	110	110	110
14	10	2	2	100	100	110	110	110	110	110	110	110
20	10	2	2	100	100	110	110	110	110	110	110	110
21	4	2	2	100	100	110	110	110	110	110	110	110

Aangifte van aanvoer/overland (*) uitgedrukt in kg of eenden (18): _____ kg

Aanbieding van de vis (17) _____

Soort (19) _____

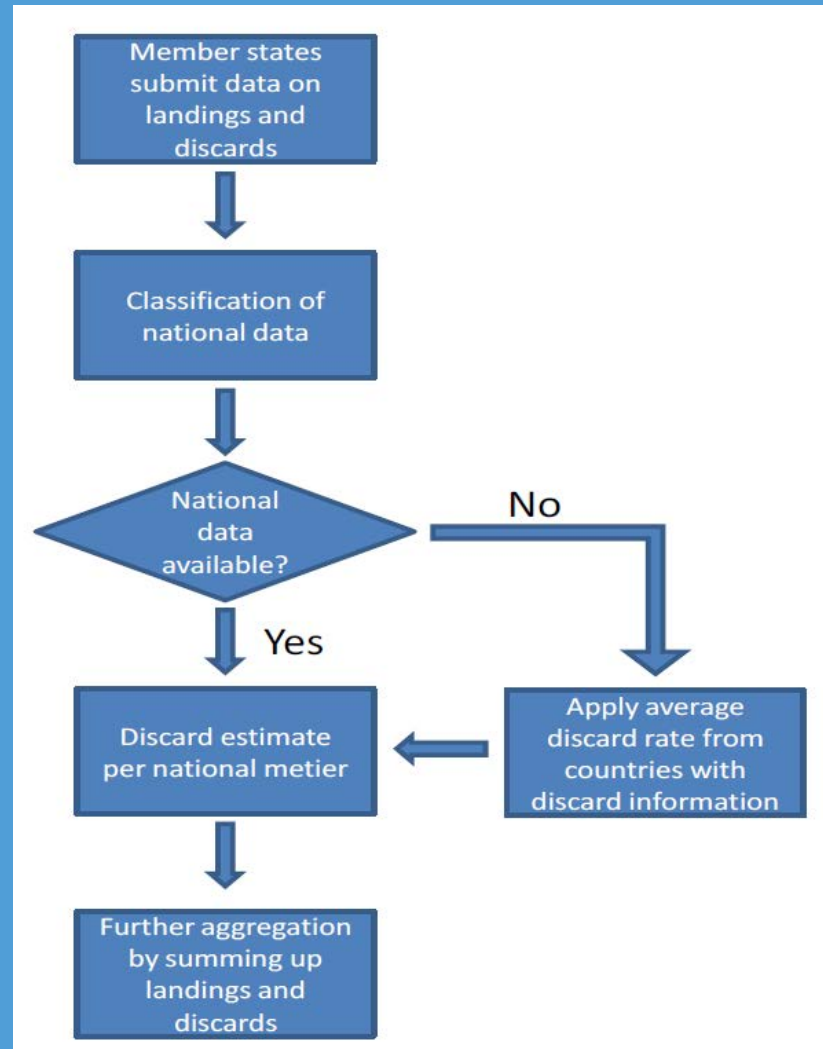
Aanbieding van de vis (17) _____

Soort (19) _____

Aanbieding van de vis (17) _____

Soort (19) _____

*) Doelwit van niet van toepassing is. Opmerkingen: _____



Limitations & issues of the data (*Ch2 ctd*)

- STECF: *overall, discards information in the North Sea is of good quality with broad coverage, so the main patterns can be considered accurate*

However, caution for outliers (e.g. due to low landings, low sampling coverage)

- Differences in ICES vs. STECF data

Quota, landings and discards (Ch3)

		2010	2010	2010	2010	2010
SPECIES		LAND	DISC	Catch	%DR	%DQ
PLE	Plaice	58962	30124	89086	34% ●	79%
DAB	Dab	7061	52024	59085	88% ●	67%
POK	Saithe	34112	2156	36268	6% ●	73%
HAD	Haddock	26640	8676	35316	25% ●	96%
COD	Cod	25971	5131	31102	16% ●	90%
WHG	Whiting	10784	12399	23182	53% ●	65%
NEP	Norway lobster	19640	285	19925	1% ●	47%
SOL	Sole	12209	1514	13723	11% ●	97%
HKE	Hake	5726	1246	6972	18% ●	40%
ANF	Anglerfish	8178	20	8198	0% ●	78%
LIN	Ling	2681	3870	6552	59% ●	10%
LEM	Lemon sole	2492	502	2993	17% ●	69%
TUR	Turbot	2325	5	2330	0% ●	15%

Information by:

- Species
- Area
- Country
- Gear

Proportion of the discard estimate derived from actual data (%DQ)

- < 33% based on actual data (i.e. mainly based on 'borrowed' data)
- 33-66% based on actual data
- > 66% based on actual data

Mitigation measures for discards *(Ch4)*

- Generic measures for managing discards
- Drivers and incentives for discarding
- Cod avoidance measures & effectiveness

- Other possible measures (under a landing obligation)
 - Quota management
 - Spatial measures
 - Allow discarding for species with high survival

Where to find the discard atlas

- <http://edepot.wur.nl/315708>
- ruben.verkempynck@wur.nl



Discard Atlas of North Sea fisheries

IMARES Wageningen UR
Wageningen, August 2014

