

BioBased Economy

Biofuels, grondstoffen en productie

Werkconferentie
Topsector Energie

Willem Sederel
29 november 2017
NBC Nieuwegein

BioBased Circular Business Platform

Perspectieven vergroten van de BBE in Nederland

Hoe werkt de procesindustrie ?

Narrow Specification Stable operations Operational excellence Excellent Quality

INVESTERINGEN "The eight-pack" BioBased Economy

Winstgevende projecten en de-risking nodig voor financiering

BBE INVESTMENTS "The eight-pack" BioBased Economy

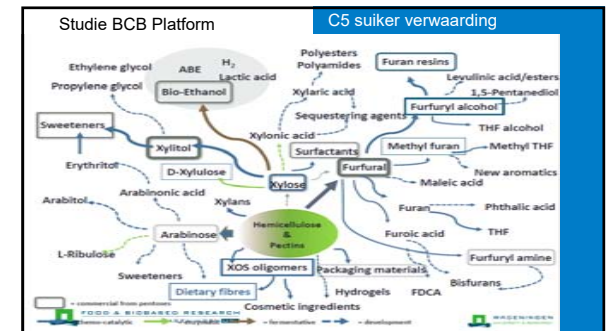
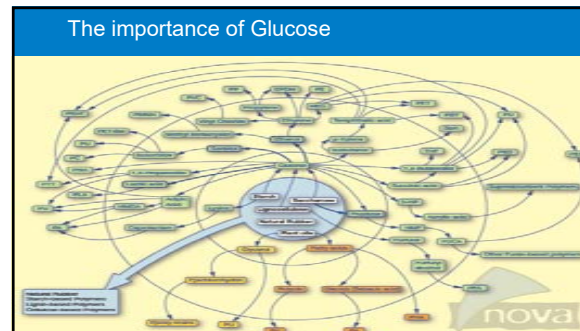
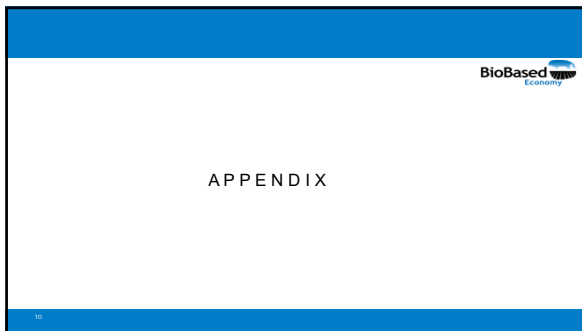
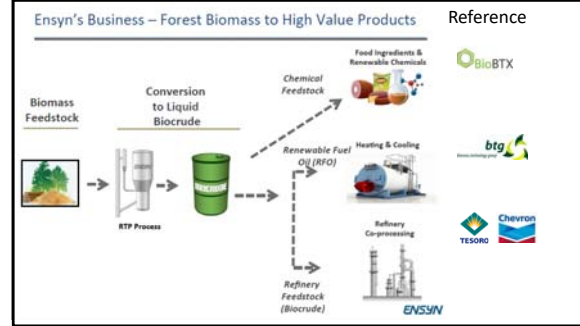
- The Business Case**
 - Model & data
 - Capex
 - Opex
 - ROI
 - Sensitivities
 - Scalability
- The Feedstock**
 - sufficient volume? availability?
 - constant quality? sustainable? multiple sources? variability?
- The Technology**
 - T&L Level? Robust? Scalable? Sustainable? Safe? IP on FTO?
- The Market**
 - Volumes & prices
 - Time/market
 - Trends
 - Replacement or now? Product
 - Application development
- The supply chain**
 - Reliable supply?
 - Cost of transport?
 - Sustainable transport
 - Storage & warehousing
 - Long term contracts?
- The Operator**
 - There are suppliers
 - There are customers
 - Is there an operator? Competitor? Risk-bearing partner
- The Location**
 - Business climate
 - Living Environment
 - Permits
 - Knowledge infra
 - Labour
- The Policy**
 - Long term vision/strategy
 - Incentives
 - R&D support (WGO, tax)
 - Instruments
 - Government as partner

Feedstock Availability BioBased Economy

Vegetable Oil 60mT Palm Oil Rape Oil	Sugar 170mT Sugar beet Sugar cane	Starch 2.070mT Corn Wheat Rye, rice, barley, Potatoes...	Ligno-cellulose Potential: X10000mT Forestry waste Energy crops Straw	Municipal Solid Waste 1300 mT Landfills Household Waste
--	---	---	--	---

For Commodity Chemicals, only options on right work well

Wat is kansrijk met hernieuwbare grondstoffen?



Biomassa grondstof voor programma's



Sugar Delta

Biorefinery

Waste2resources (Borizon)

Regional Agents: Aquatic & miscCattails