

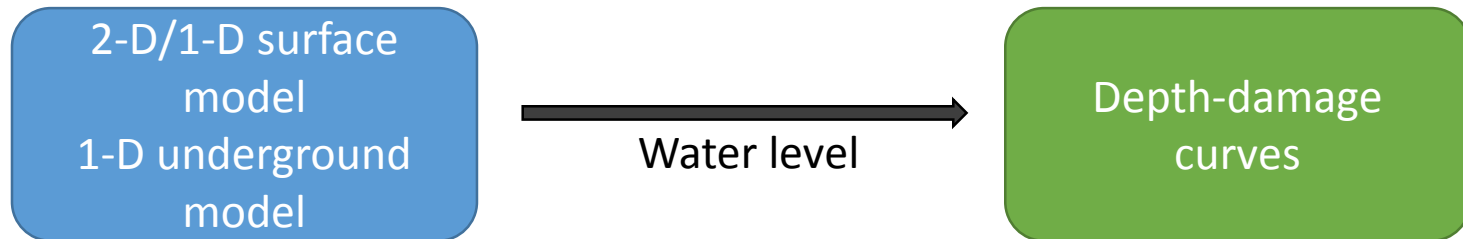
What Happened?

Analyzing pluvial flood events with models

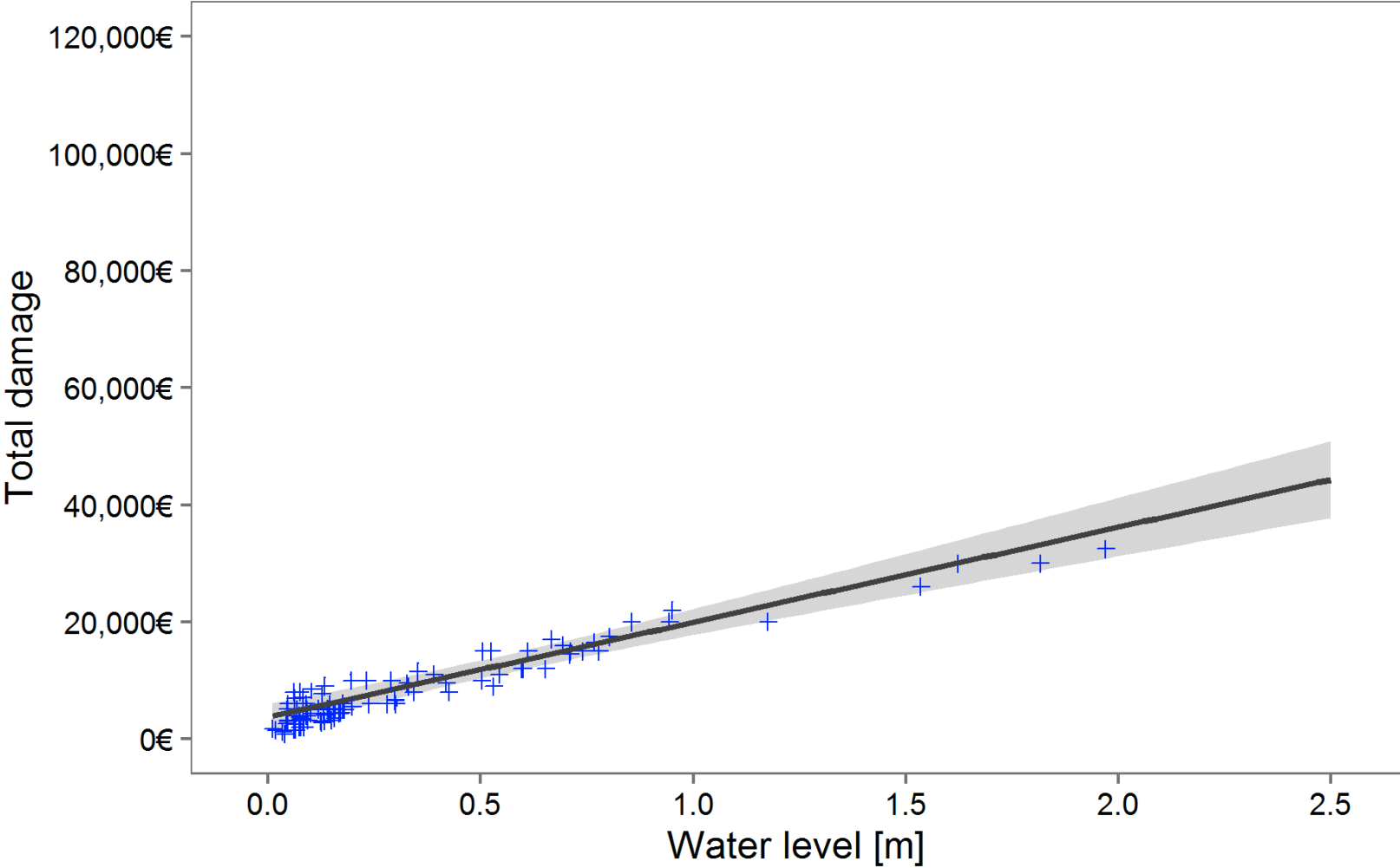
2-D/1-D surface
model
1-D underground
model

What Happened?

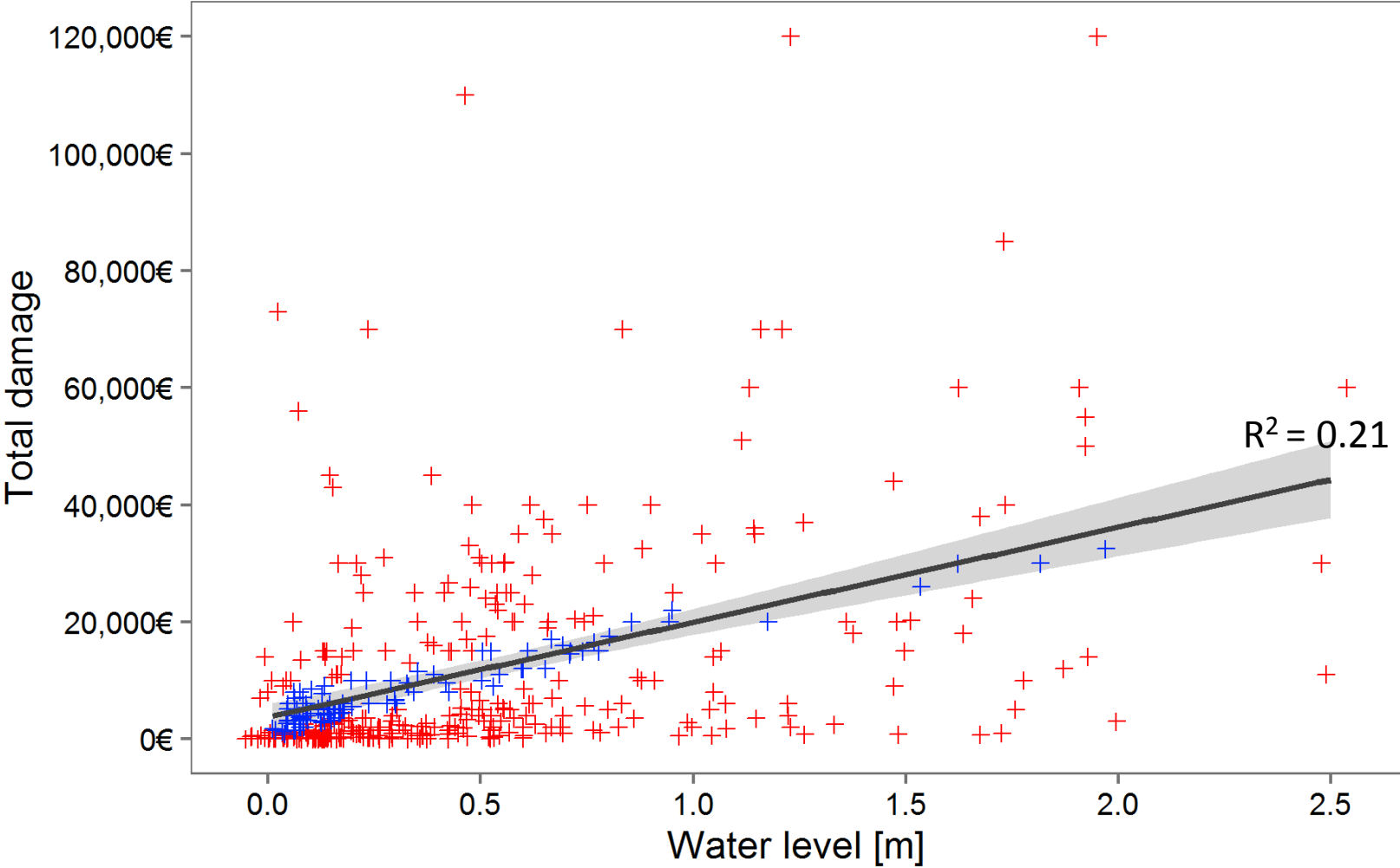
Analyzing pluvial flood events with models



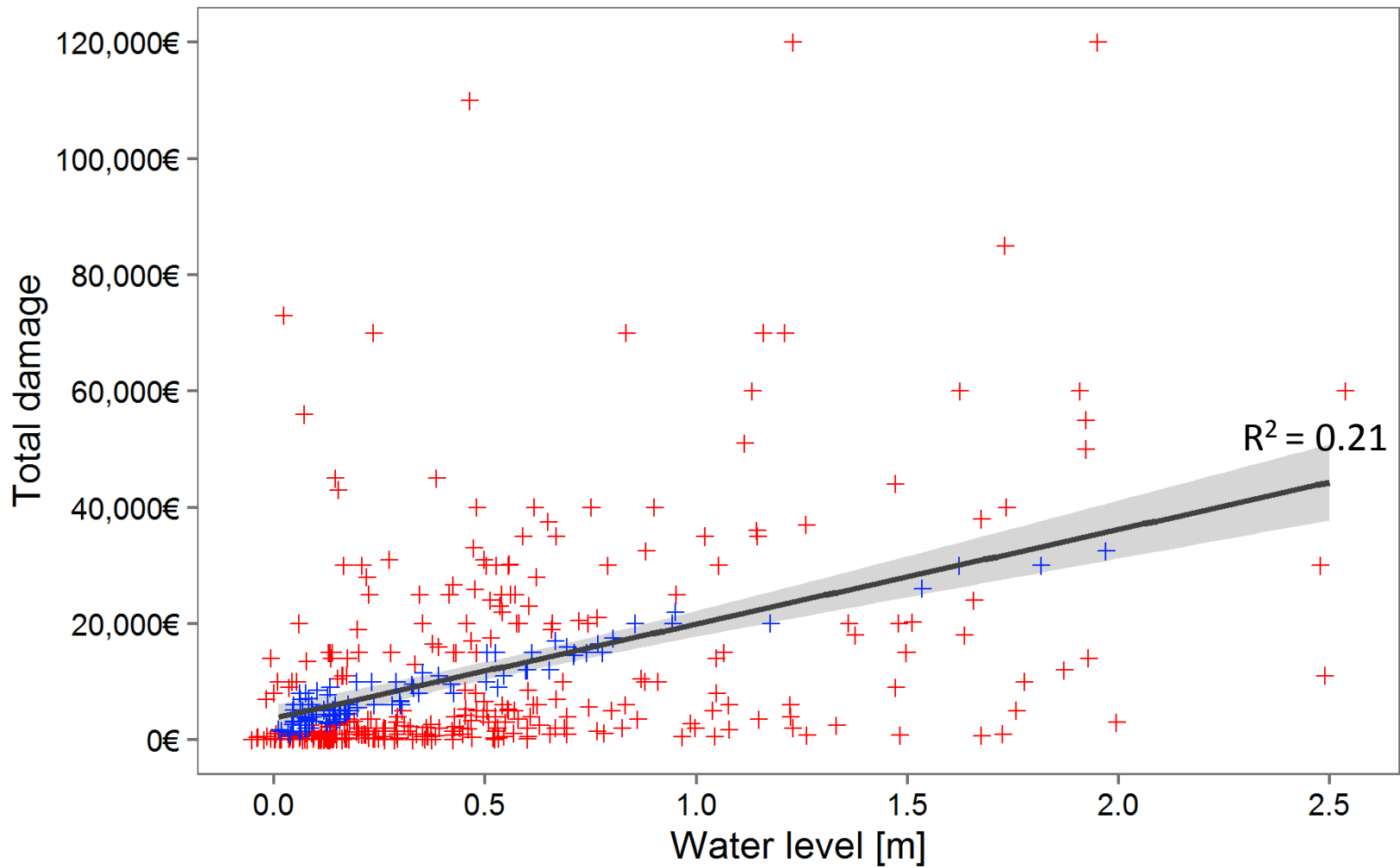
Water level



Water level



- | | | | |
|--------------------|---------------|---------------|-----------------------|
| Knowledge | Experience | Contamination | Socio-economic status |
| Emergency response | Precaution | Duration | Building value |
| Early warning | Flow velocity | Water level | Building type |



Data are better than models!

Municipalities and water boards can learn more from collecting and analyzing data from historic flood events than from computer models.