



Source: Inhabitat.com

What has happened?

7 October 2016 | Gijs Kloek | STOWA, Amersfoort

achmea 

BEFORE:
Extensive Flooding

02 July 2011: > 150mm
RAIN fell in 2 HOURS.



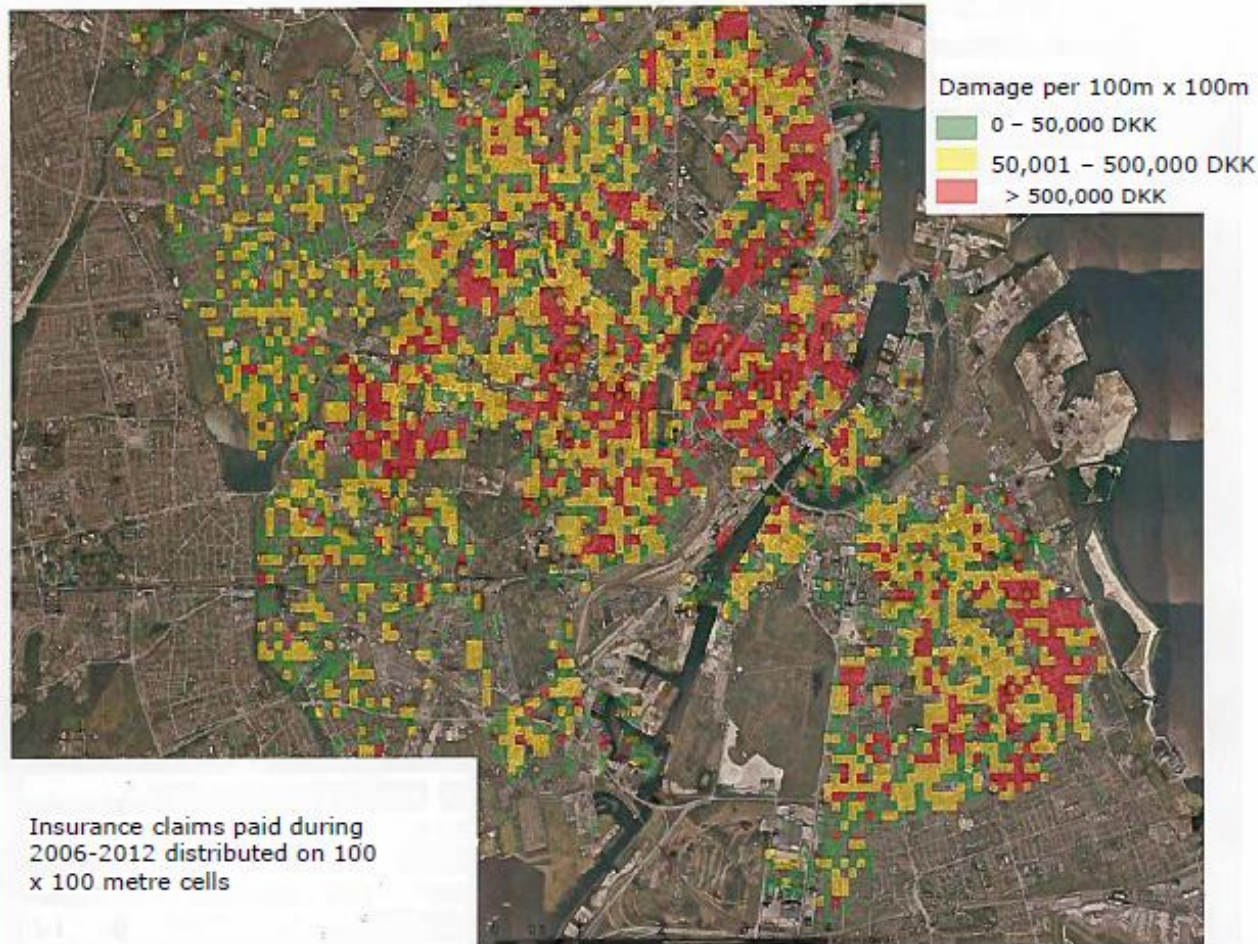
GASVÆRKSVEJ
Copenhagen

Source: Atelier Dreiseitl

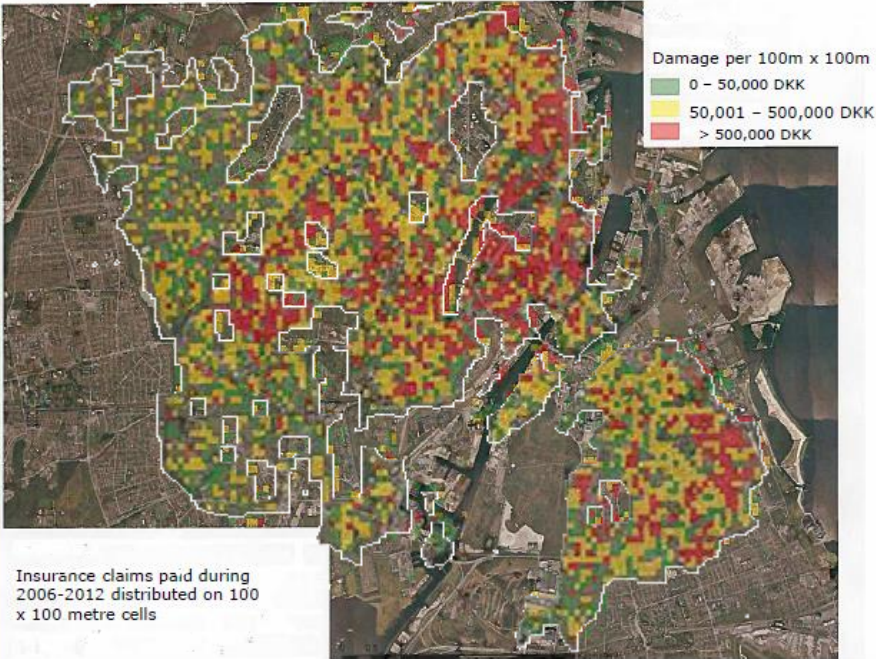
Insured loss around € 1 billion



Copenhagen – insurance claims



Copenhagen – insurance claims



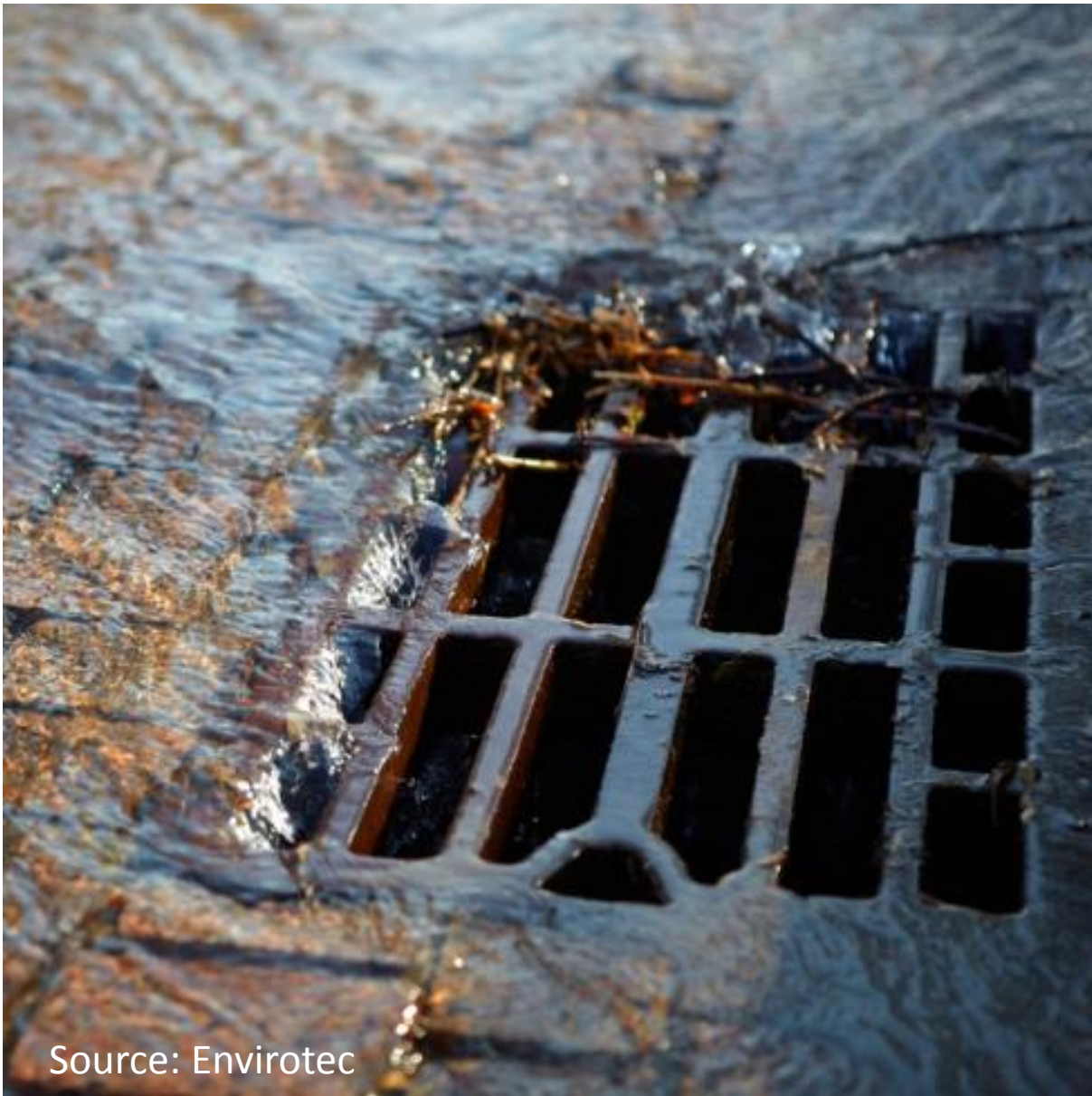
The Danish Insurance Association



Source: Google



Originally published by Envirotec Magazine



Source: Envirotec



www.jobbewijnen.nl