



➔ Case D-Soilmodel, Vuren

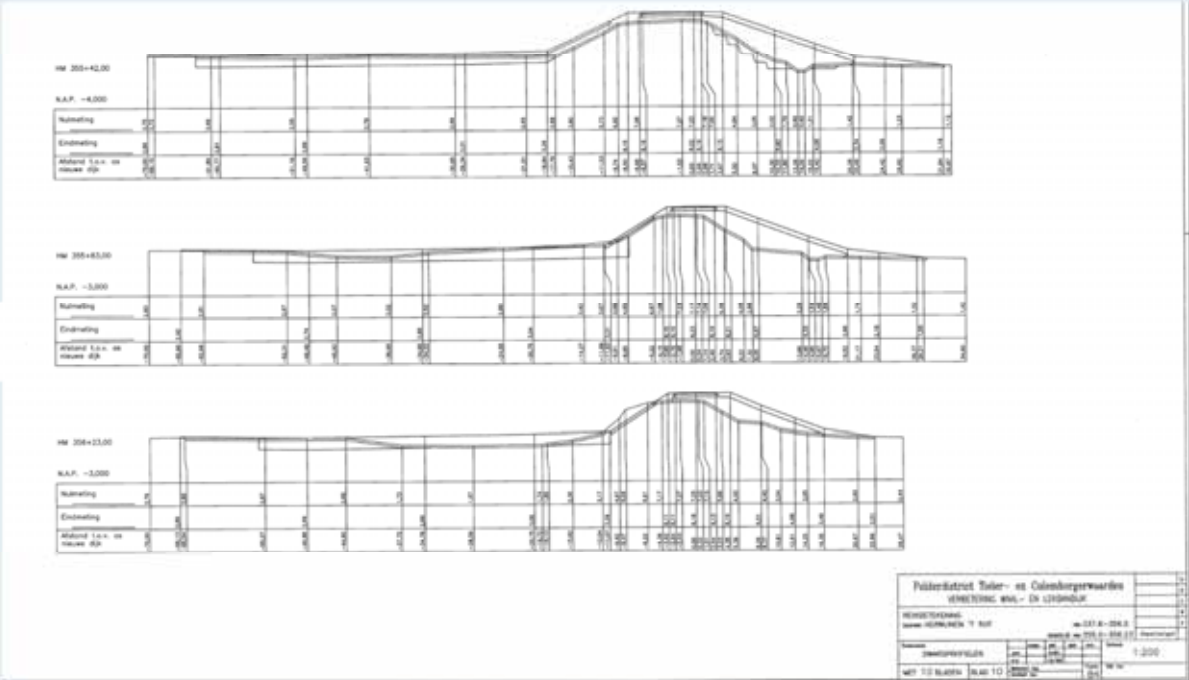
Bianca Hardeman
RWS-WVL

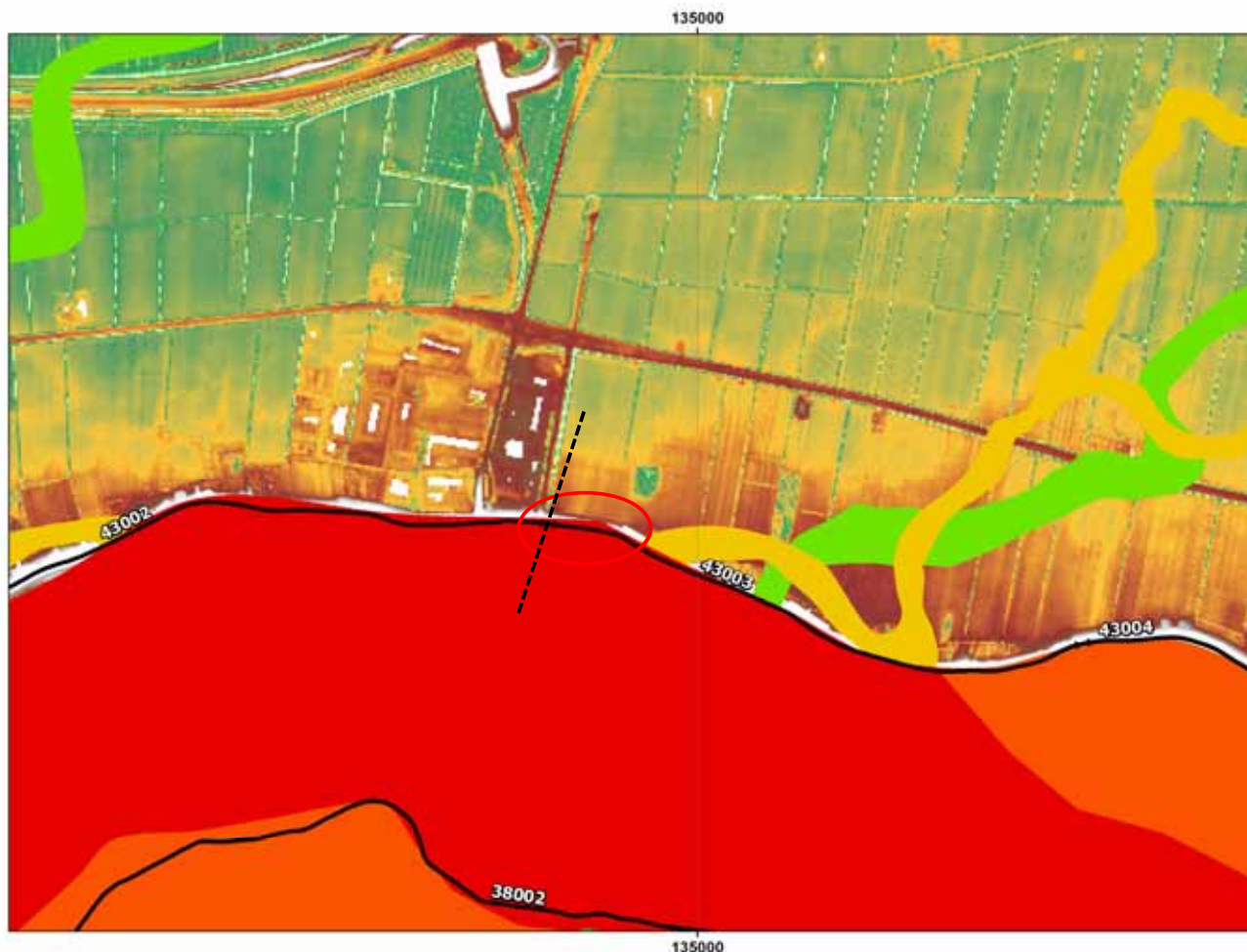
Pilot-cursus Macrostablieiteit
23 september 2016



Locatie







stowa

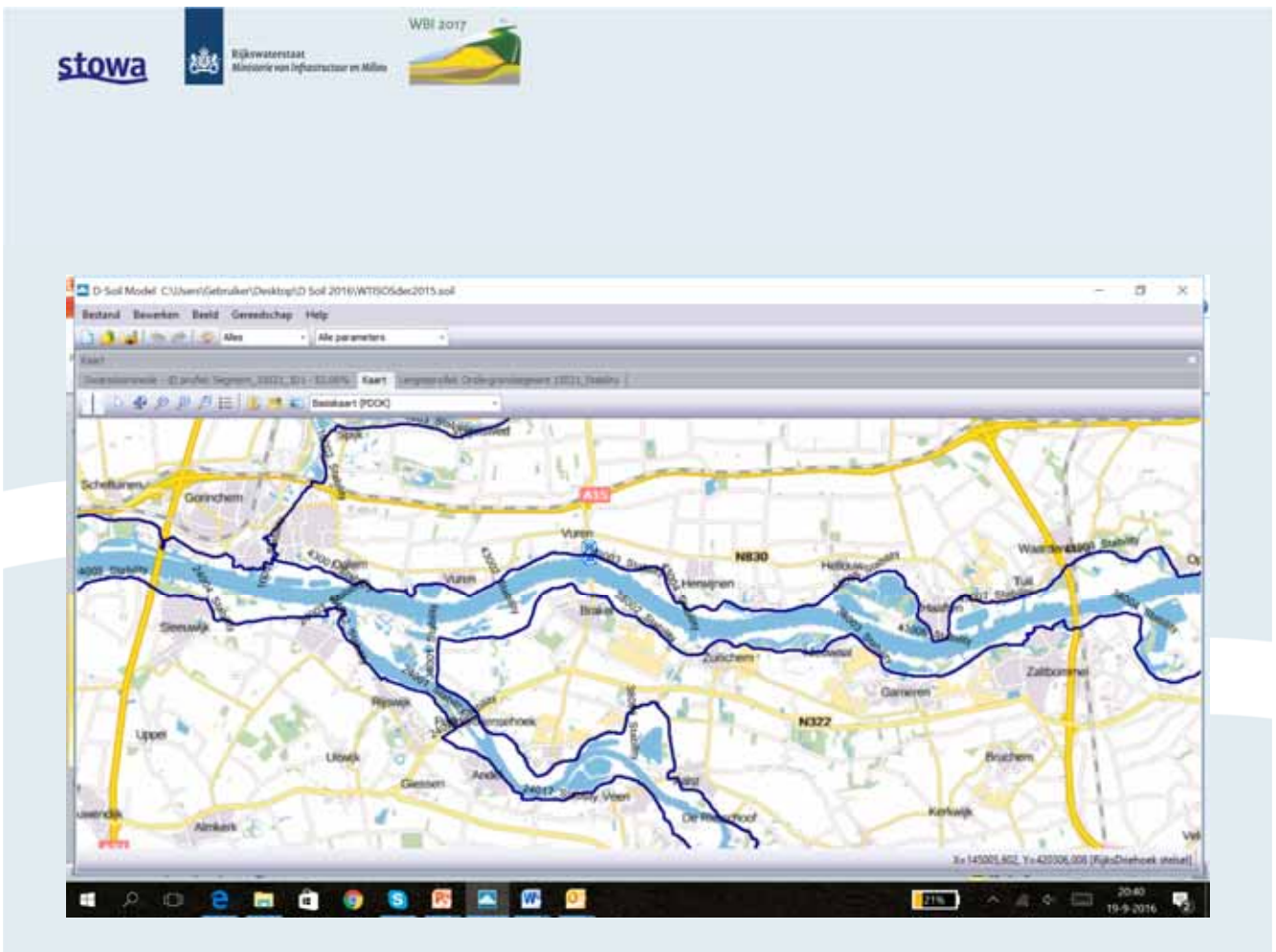
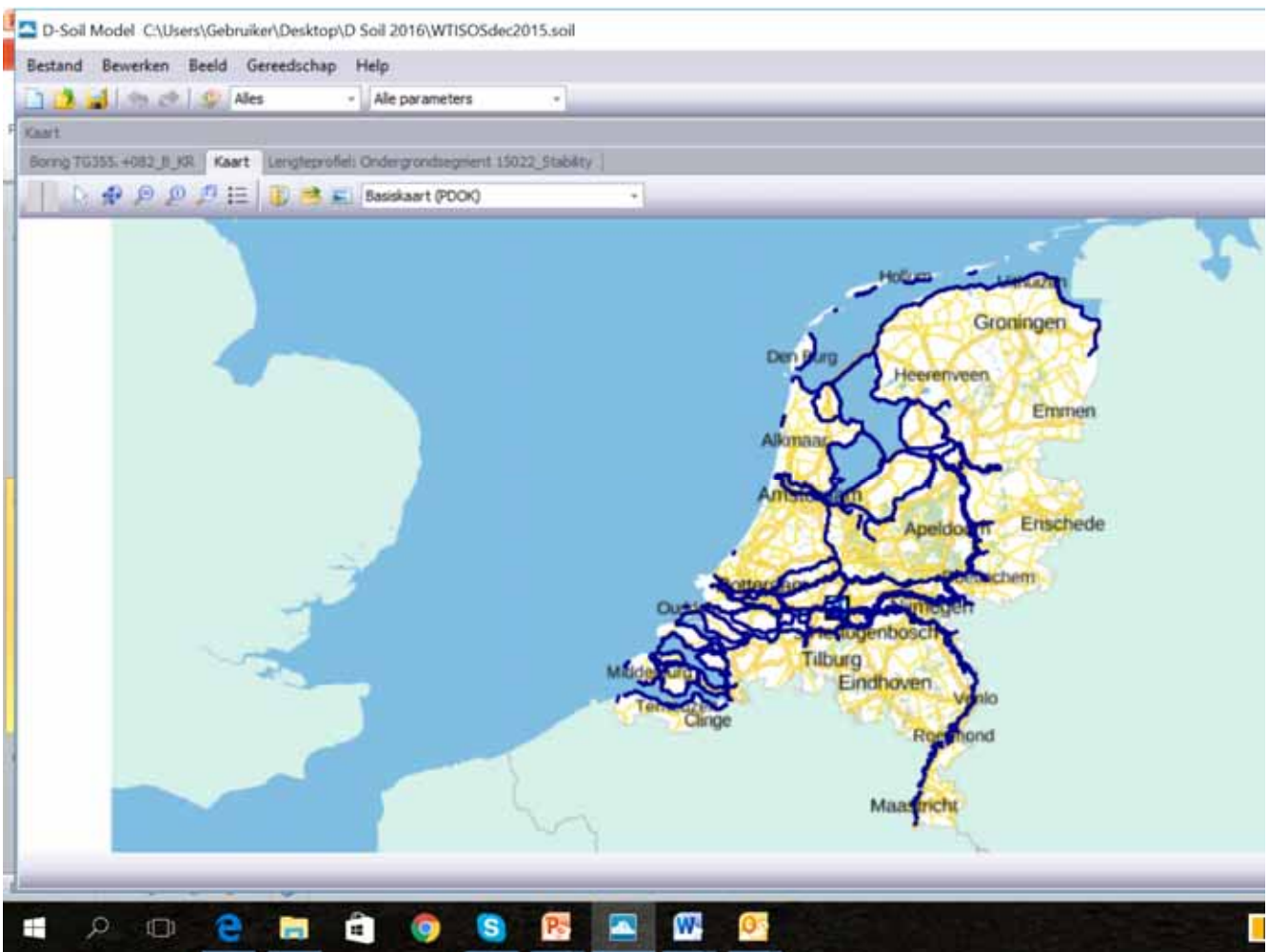


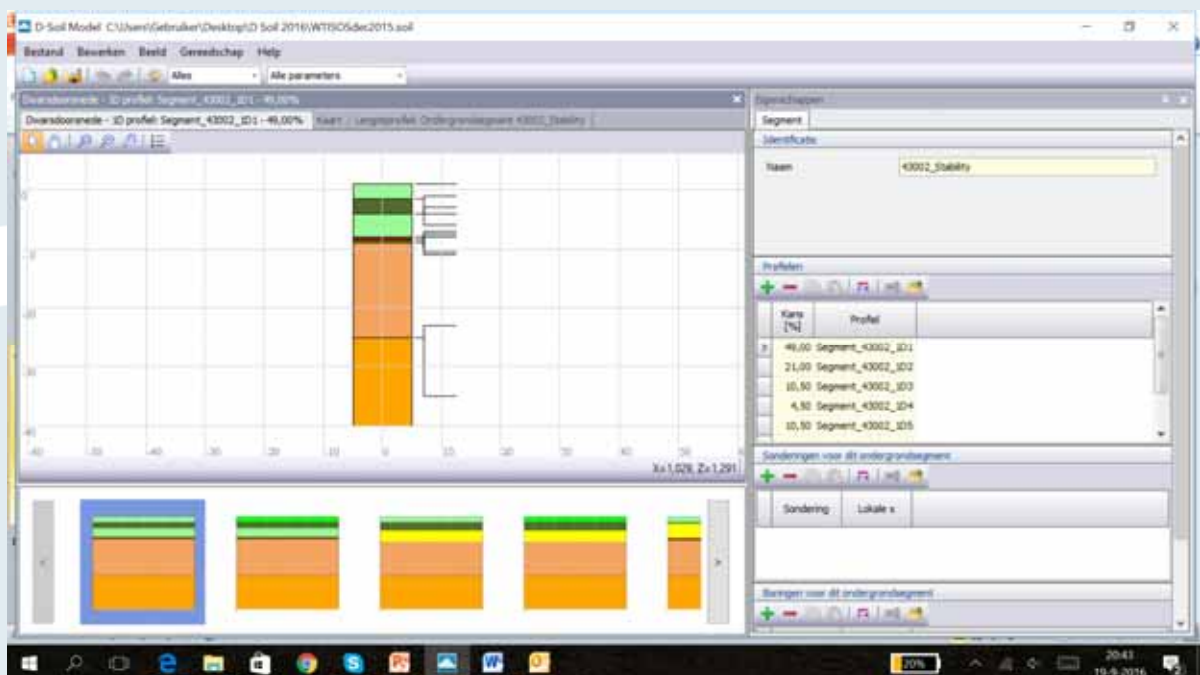
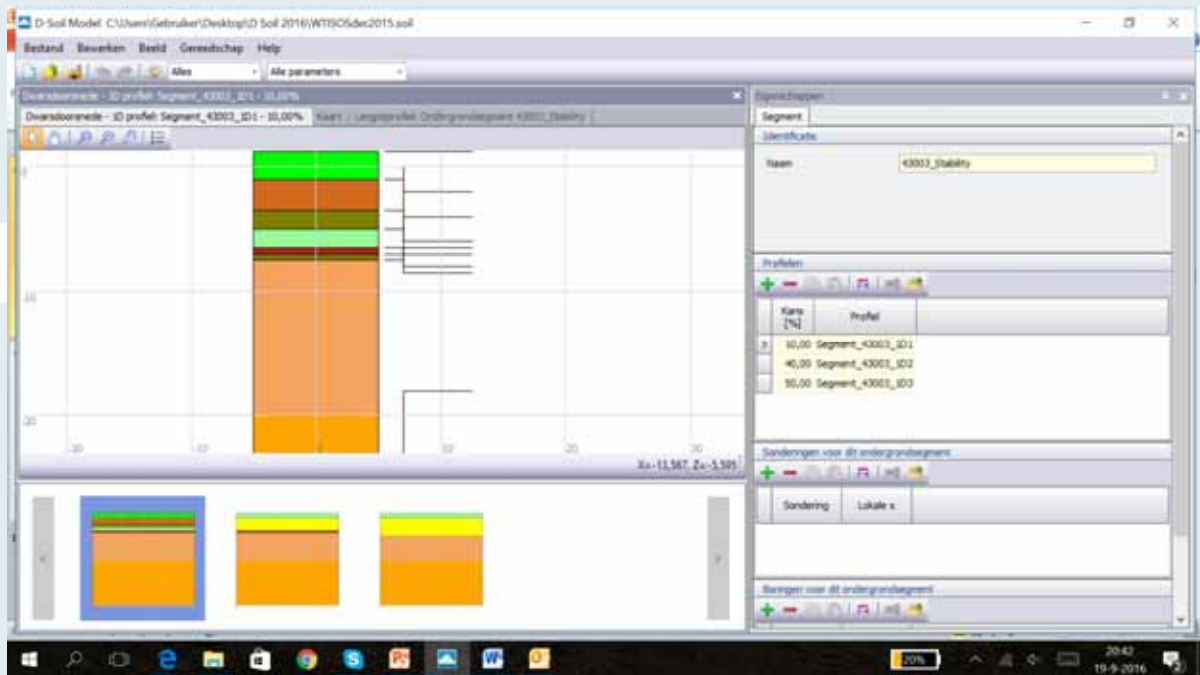
Rijkswaterstaat
Ministerie van Infrastructuur en Milieu



Opstarten D-SoilModel

- We gaan de case nu gezamenlijk opzoeken in D-SoilModel
- Openen SOS en zoeken naar segment 43003
- Bekijken ondergrond en scenario's



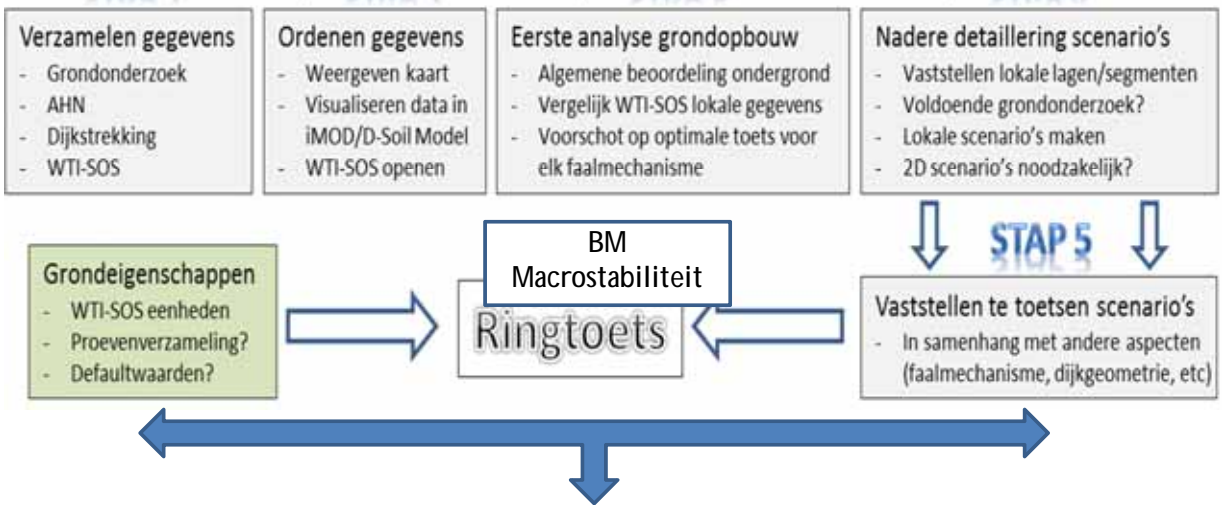


Maken 2D-profiel

- Inlezen hoogtegeometrie
- Inlezen karakteristieke punten
- Maken 2D

Stappenplan

STAP 1 → STAP 2 → STAP 3 → STAP 4



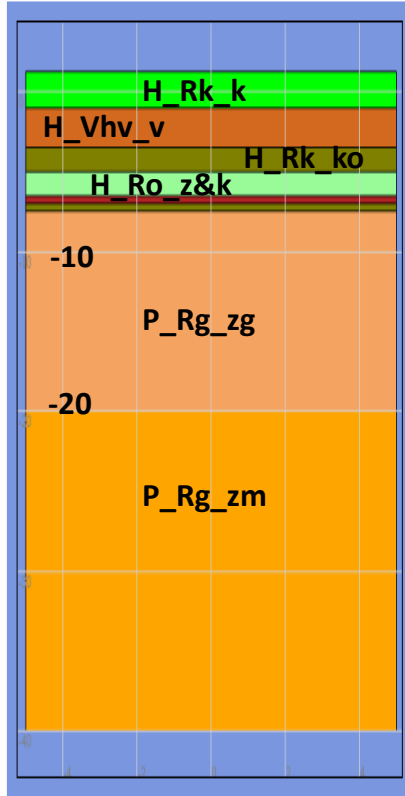
D-Soil Model

- Handleiding WTI-SOS: globaal naar lokaal
- Instructie SOS
- Schematiseringshandleidingen

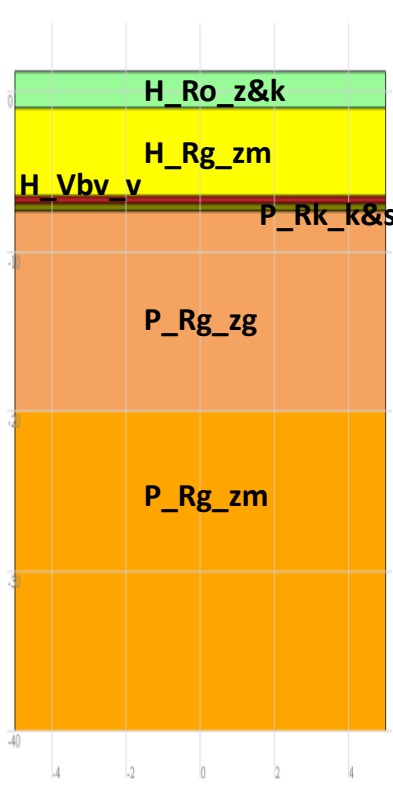
D-Soil Model

- Aan de slag in D-Soil Model
 - Gegevens in D-Soil Model
 - Schematiseren in D-Soil Model
-
- Bestand:
WTISOScursusmacrocaseVurendefault.soil

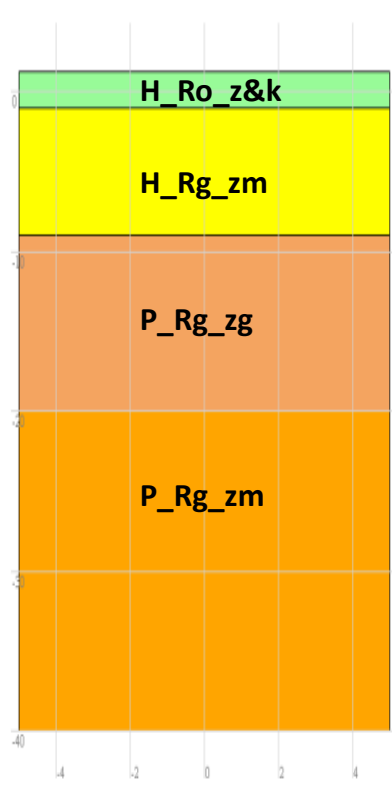
Beschikbare data



10%

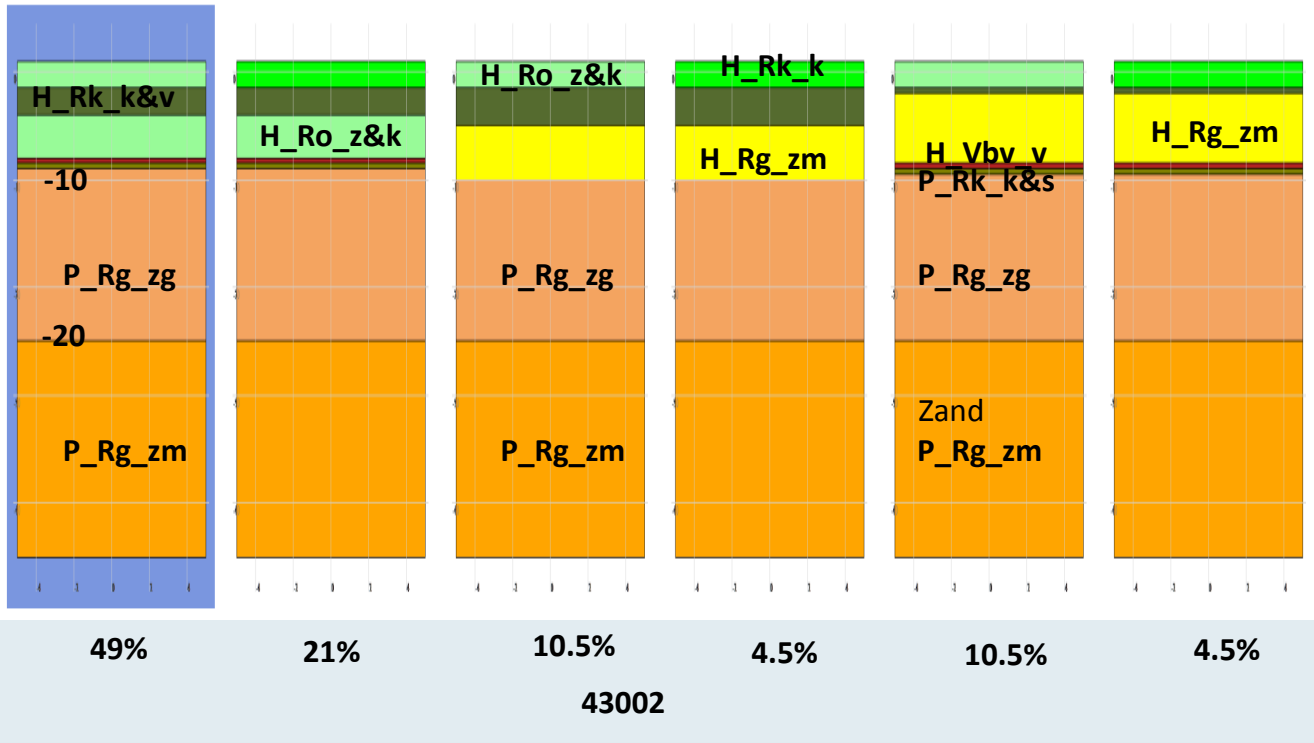


40%
43003



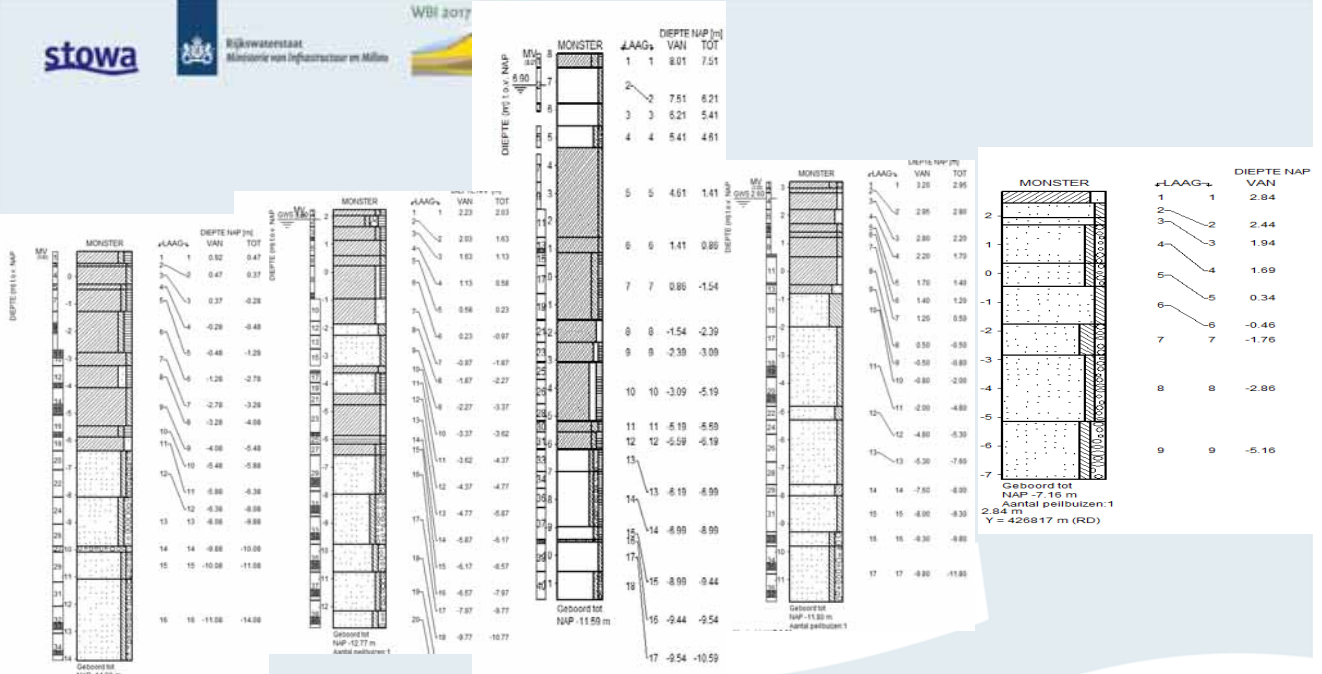
50%

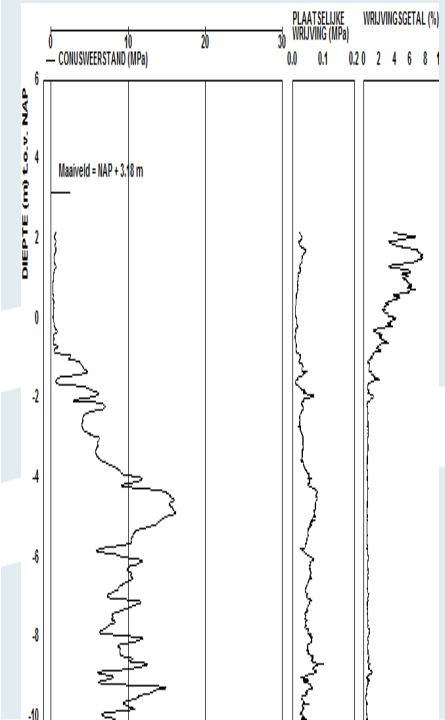
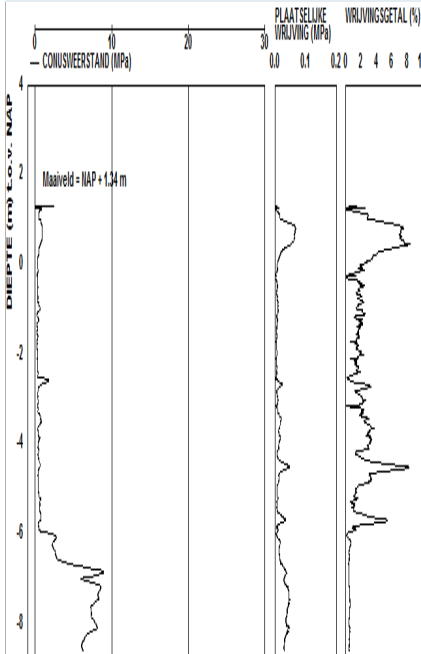
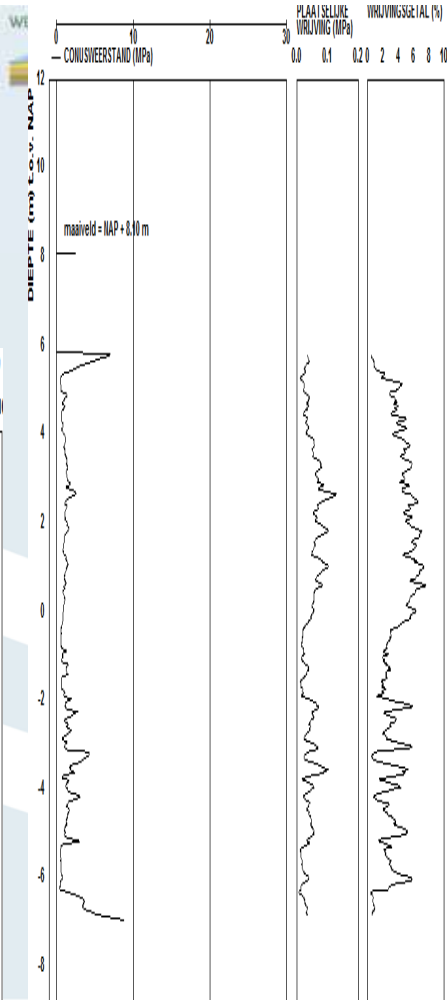




Pijpberm breedte 13m. / besteknummer 95.73-85 en 95.89







Opdracht:

- Bekijk boringen en sonderingen
- Vergelijk deze met scenario's

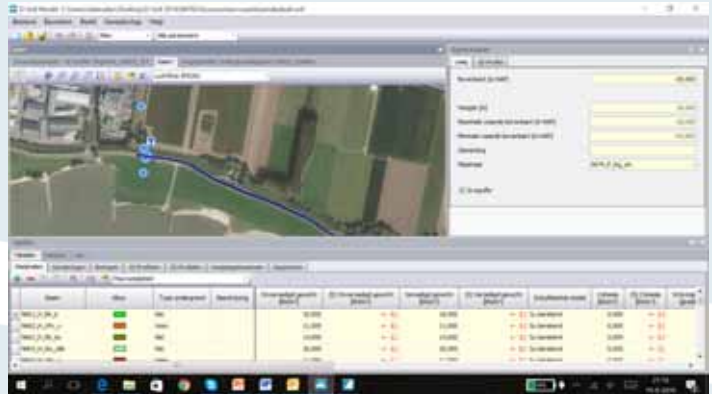
Vragen:

- Welke scenario's zijn realistisch?
- Zouden scenario's aangepast moeten worden?
- Kunnen er scenario's weg?
- Eindresultaat: met welke scenario's gaan we rekenen?

Grondeigenschappen

Materiaaleigenschappen in D-SoilModel
(gezamenlijk in D-SoilModel bekijken)

- Volumiek gewicht
- Schuifsterktemodel
- Wrijvingshoek
- Startwaarden S en POP



- Schematiseringshandleiding Macrostabiliteit



Meer informatie
STOWA

opleidingen@stowa.nl

www.opleidingen.stowa.nl