

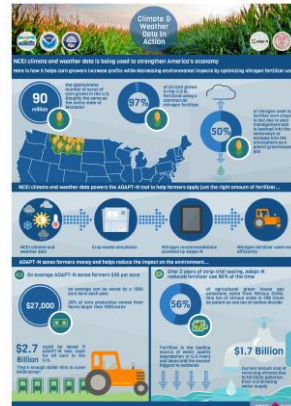
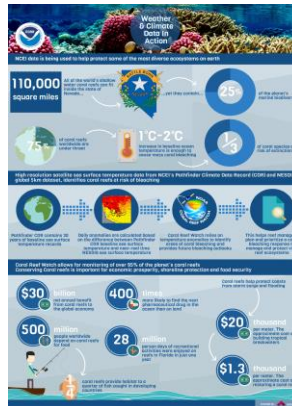
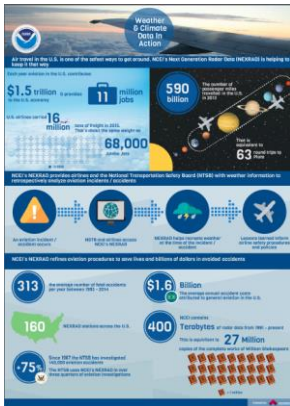
# NOAA's National Centers for Environmental Information (NCEI)



The National Climatic Data Center, the National Geophysical Data Center, and the National Oceanographic Data Center merged into into the **National Centers for Environmental Information**.

**MISSION:** Responsible for preserving, monitoring, assessing and providing public access to the Nation's treasure of climate and historical weather data and information.

# Acclimatise Support to NCEI



## Case Study: Adapt-N



*Adapt-N is a web-based decision support tool that helps growers optimally manage their nitrogen inputs for corn production.*

### Who are the developers of Adapt-N?

Cornell University, Department of Crop and Soil Sciences, the Northeast Regional Climate Center, Agronomic Technology Corporation

### Why is nitrogen management important?

*Nitrogen is a critical input to crop growth and productivity, but 50% of it is wasted due to complexity, mobility, and lack of visibility*

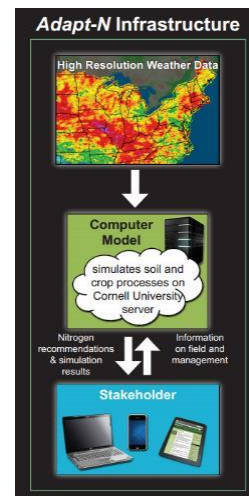


*Nitrogen is elusive!*

## What is the role of NCEI's data in Adapt-N?



- GHCN-Daily min & max temperature
- GHCN-Daily rainfall



## Successes of Adapt-N



### Economic

Profit gains as a result of using Adapt-N, versus not using Adapt-N, have been quantified through strip trials and average approximately **\$30 per acre**.

The Donald's followed Adapt-N's recommendations and decreased their N-inputs by 1/3

There were NO yield losses and the Donald's **saved approximately \$35/acre** through avoided N inputs

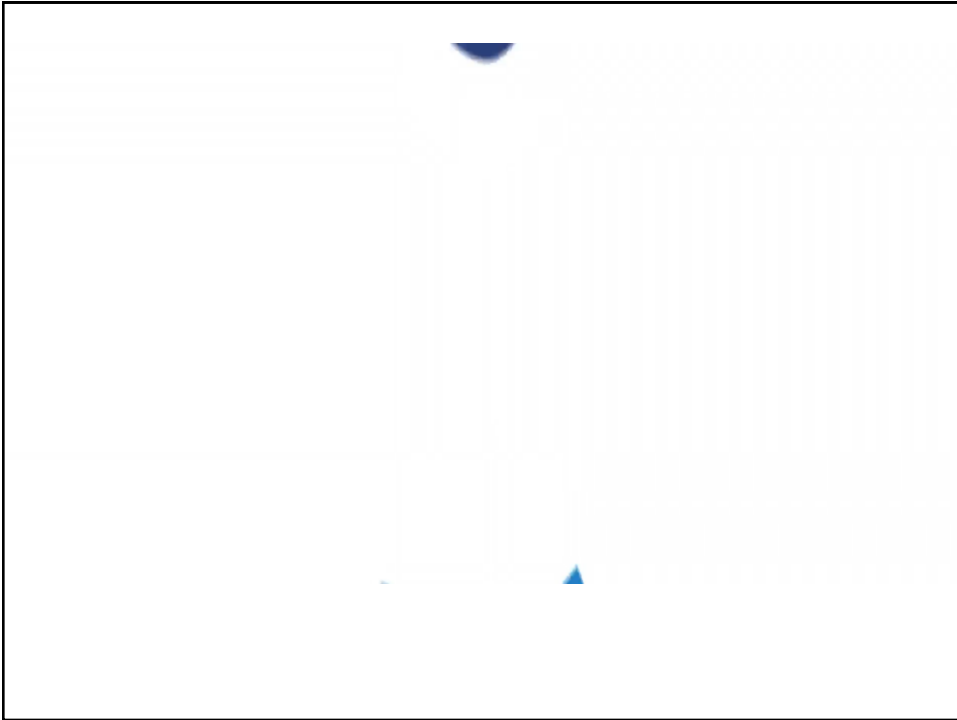


## Environmental / social benefits: Reduction of the following:



- Hypoxia (oxygen depletion) and eutrophication in the Gulf of Mexico
- Global Climate Change
- Harmful algal blooms
- Bio-diversity loss in aquatic and terrestrial ecosystems





Thanks for listening!

Amanda Rycerz, Climate Risk Analyst  
a.rycerz@acclimatise.us