



Ministry of Infrastructure and the Environment

# The delta approach in the IJsselmeer region

Peter Heij

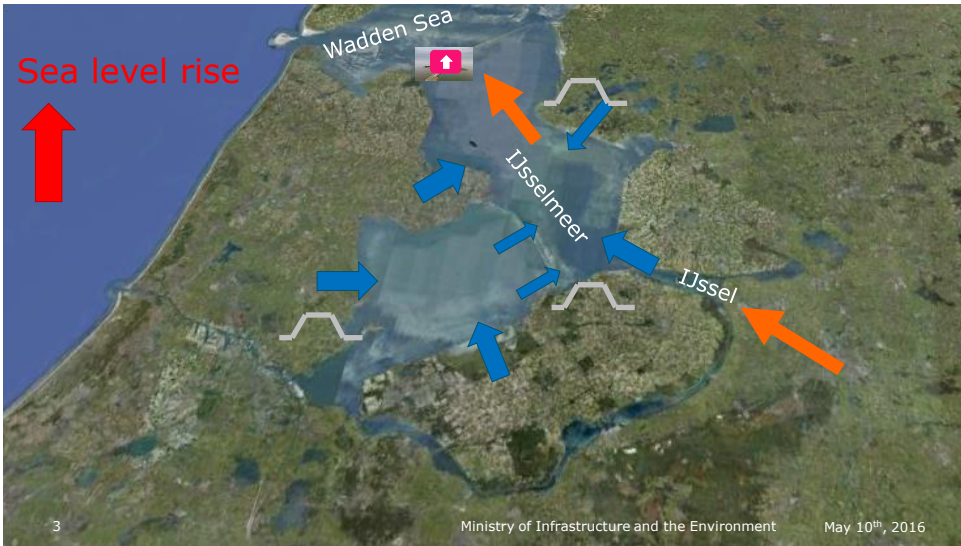
Director-General for Spatial Development and Water Affairs

May 10<sup>th</sup>, 2016





## Climate change: water safety



## Climate change: water shortage





## Other national policy goals



5

Ministry of Infrastructure and the Environment

May 10<sup>th</sup>, 2016

## Need for an integrated approach

- Governance of IJG region is complex: many ambitions
- *Embrace the complexity, let other ambitions and discussions join*
- The “Dutch delta approach” by following 4 A’s:
  - **Analysis**
  - **Ambition**
  - **Alliances**
  - **Action**



6

Ministry of Infrastructure and the Environment

May 10<sup>th</sup>, 2016



## Create marking points in transition processes

- Show innovative power
- Think in cross-overs



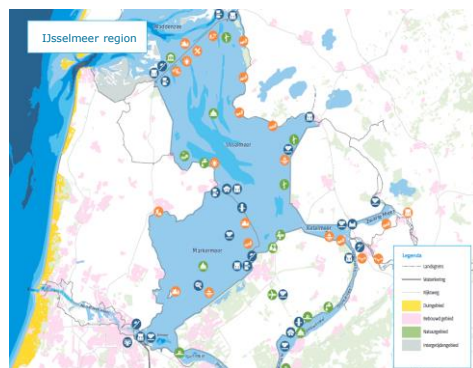
7

Ministry of Infrastructure and the Environment

May 10<sup>th</sup>, 2016

## Conclusion

- Climate change adaptation creates the momentum
- Embrace complexity, create a joint perspective
- Develop into a showcase



8

Ministry of Infrastructure and the Environment

May 10<sup>th</sup>, 2016



## Image credits

**Slide 1.** Picture by Theo Bos.

**Slide 2.** Picture by Theo Bos.

**Slide 3.** Picture by Theo Bos. Map by Google Earth.

**Slide 4.** Pictures by Theo Bos. Map by Google Earth.

**Slide 5.** Pictures on the left by Tineke Dijkstra. Picture IJsselmeer dyke and windmills: Rob Poelenjee.

Picture cargo ship: ANP, [www.refdag.nl/nieuws/binnenland/lemmer\\_leystad\\_het\\_ijs\\_is\\_gebroken\\_1\\_379892](http://www.refdag.nl/nieuws/binnenland/lemmer_leystad_het_ijs_is_gebroken_1_379892).

**Slide 6.** Picture by Pieter den Besten.

**Slide 7.** Blue Energy infographic, FujiFilm (<https://blog.fujifilm.eu/spotlight-16-fujifilm-membranes-in-blue-energy-test-power-station/> 3).

Fish migration river infographic: De nieuwe Afsluitdijk (<http://www.dutchwatersector.com/news-events/news/14239-ambitious-850-million-reinforcement-will-make-the-afsluitdijk-a-new-icon-of.html>).

**Slide 8.** Infographic from 'Beheer- en ontwikkelplan voor de rijkswateren 2016 – 2021', Rijkswaterstaat.