

Cod monitoring

Results 2014, quarter 3.

K.J. van der Reijden, M.A.M. Machiels & M.L. Kraan

Report number C070/15

IMARES Wageningen UR

(IMARES - Institute for Marine Resources & Ecosystem Studies)

Client:

Ministerie van Economische Zaken
T.a.v. Lianne van Kersbergen
Postbus 20401
2500 EK DEN HAAG

BAS code: BO-20-010-002

Publication date:

April 2015

IMARES vision::

- 'To explore the potential of marine nature to improve the quality of life'.

IMARES mission:

- To conduct research with the aim of acquiring knowledge and offering advice on the sustainable management and use of marine and coastal areas.

IMARES is:

- An independent, leading scientific research institute.

Recommended format for purposes of citation: van der Reijden, KJ; MAM Machiels, ML Kraan (2015) Cod monitoring. Results 2014, quarter 3. IMARES Report C070/15.

P.O. Box 68
1970 AB IJmuiden
Phone: +31 (0)317 48 09 00
Fax: +31 (0)317 48 73 26
E-Mail: imares@wur.nl
www.imares.wur.nl

P.O. Box 77
4400 AB Yerseke
Phone: +31 (0)317 48 09 00
Fax: +31 (0)317 48 73 59
E-Mail: imares@wur.nl
www.imares.wur.nl

P.O. Box 57
1780 AB Den Helder
Phone: +31 (0)317 48 09 00
Fax: +31 (0)223 63 06 87
E-Mail: imares@wur.nl
www.imares.wur.nl

P.O. Box 167
1790 AD Den Burg Texel
Phone: +31 (0)317 48 09 00
Fax: +31 (0)317 48 73 62
E-Mail: imares@wur.nl
www.imares.wur.nl

© 2015 IMARES Wageningen UR

IMARES, institute of Stichting DLO
is registered in the Dutch trade
record nr. 09098104,
BTW nr. NL 806511618

The Management of IMARES is not responsible for resulting damage, as well as for damage resulting from the application of results or research obtained by IMARES, its clients or any claims related to the application of information found within its research. This report has been made on the request of the client and is wholly the client's property. This report may not be reproduced and/or published partially or in its entirety without the express written consent of the client.

A_4_3_2-V14.2

Contents

Contents.....	3
1. Introduction	4
2. Materials and Methods	5
2.1 Logbook data	5
2.2 VMS data	5
2.3 Value maps	5
2.4 Calculate LpUE ratio.....	5
3. Results	6
3.1 Fishing activity	6
3.2 Cod landings.....	8
3.3 Cod LpUE	10
4. Summary	12
Quality Assurance	13
References.....	13
Justification.....	14
Appendix A. Extended Materials and Methods.....	15

1. Introduction

The Cod monitoring program is part of the Dutch cod avoidance plan developed by the Dutch Government together with the Dutch fishing sector. The aim of this cod monitoring program is to provide information on the Catch per Unit Effort (CpUE) in the TR fleet (bottom trawls and seines). This is needed in order to calculate a conversion factor between the CpUE of the TR and the BT (beam trawl)¹ gears. The transition of kW-days between gears is regulated by the European cod recovery plan (EC 423/2004 and EC 1342/2008) and depends on the yearly CpUE-ratio of cod between the respective gear groups.

In the Dutch cod avoidance plan, the Dutch government distinguishes between otter/pair trawlers that are directed to cod (TR1AB²) and those for which cod is bycatch (i.e. TR1C and TR2) (see table 1). The kW-days transition only applies to the second group, fisheries for which cod is bycatch. For the kW-days transition between the BT and the TR gears for which cod is bycatch (TR1C and TR2) a conversion factor of 3:1 is used in the Netherlands. This is different than stated in the European Cod Recovery Plan and therefore the ratio should be substantiated for.

Table 1. Definitions of the fleet segments used in this report.

Fleet definition	Geartype	Meshsize (mm)	Assumed target species
TR1AB	Otter/pair trawlers	>120	Cod
TR1C	Otter/pair trawlers	100-119	Plaice
TR2	Otter/pair trawlers	70-99	Plaice/Nephrops
BT2	Beam trawlers	70-119	Plaice/Sole

Between 2011 and 2013, the monitoring program existed of an extended analysis of self-reported cod catch data (both landings and discards) in combination with the regular DCF discard monitoring program, an extra observer program and the CCTV-project in TR-fisheries (see Kraan *et al.* (2013 and 2014)). Over the years, the ministry of Economic Affairs and IMARES drew the conclusion that monitoring cod discards via the self-reporting scheme asked for disproportionately high effort of the TR-skippers while discards were hardly affecting CpUE rates (Ministry of Economic Affairs (2014)). Therefore, it was agreed upon a yearly analysis of the EU-logbook (hereafter logbook) data in combination with VMS-data, which is readily available. However, to remain updated, an overview of fishing activity, cod catches and cod Landings per Unit Effort (LpUE) of all four gear types per quarter is requested by the ministry of Economic Affairs. This report presents the results of the third quarter in 2014.

¹ And other gears (gillnets, trammel nets and longlines) which are not relevant for this report.

² Some fishermen fishing with TR gear, 120⁺ mesh size are targeting plaice with cod as minor by-catch.

2. Materials and Methods

In this section, the data sources and the final output are described. See “Appendix A. Extended Material and Methods” for a detailed description of the method to link VMS and logbook data. The method used in this report is consistent with the method described in Hintzen *et al.* 2013.

2.1 Logbook data

All fishermen are obliged to report their activities on a daily basis. This includes location, gear used, vessel characteristics and estimated landing quantities (in kg). These quantities are an estimation and therefore deviate from auction data. Moreover, fishermen do not have to report catches for species with a trip-total quantity below 50 kg. As cod is a by-catch species, trips with cod landings lower than 50 kg can be expected. Therefore, the cod catches in this report are an underestimation of the total catches. Second, fishermen report all landings and vessel characteristics online and the data are immediately imported in the database of the Dutch Government. The logbook data cannot be validated or checked by IMARES on correctness of the data. Therefore, records with a type-error in the gear description will not be recognised as ‘wrong’, but will wrongly be taken into consideration.

2.2 VMS data

All ships over 12 meters are obliged to participate in the Vessel Monitoring System (VMS). This system sends an update to a satellite, containing time and date, position, speed and name of the vessel. All these records are registered by the Dutch government. IMARES has permission to work with these data.

2.3 Value maps

All value maps show data for quarter 3, summed for all gears together and for all gears separately. To facilitate the visual comparison between quarterly and yearly spatial distribution, values of fishing activity and landings in quarter 3 are multiplied by 4. By doing so, fishing activity and landings per quarter have similar value ranges as yearly fishing activity and landings value ranges. To supply actual quarterly fishing activity and cod landings, each map includes a box underneath with the absolute quarterly value for that (those) gear(s).

2.4 Calculate LpUE ratio

A quarterly indicator of the conversion factor between the TR and the BT gears is given. This indicator is based on the ratio between LpUE of the TR gears for which cod is bycatch (TR1C and TR2) and the BT2 gears (see formula (1)). As this analysis is based on logbook data, in which cod landings are reported in kg (with a minimum of 50 kg), the calculated ratio in LpUE has a large uncertainty range not accounted for in this quarterly report. A more detailed yearly ratio in LpUE between BT and TR will be given in the extensive year report, that will be published later this year.

$$(1) \quad \left(\frac{(\text{Cod landings TR1C+TR2})}{(\text{Fishing activity TR1C+TR2})} \right) / \left(\frac{(\text{Cod landings BT2})}{(\text{Fishing activity BT2})} \right)$$

3. Results

3.1 Fishing activity

Fishing activity was calculated for all gears together (figure 1) and for each gear separately (figure 2) (table 2). Fishing activity is displayed in kW-days, which represents days at sea multiplied with the engines power, as the day-transition is applied to kW-days. Most fisheries are concentrated in the southern and central part of the North Sea.

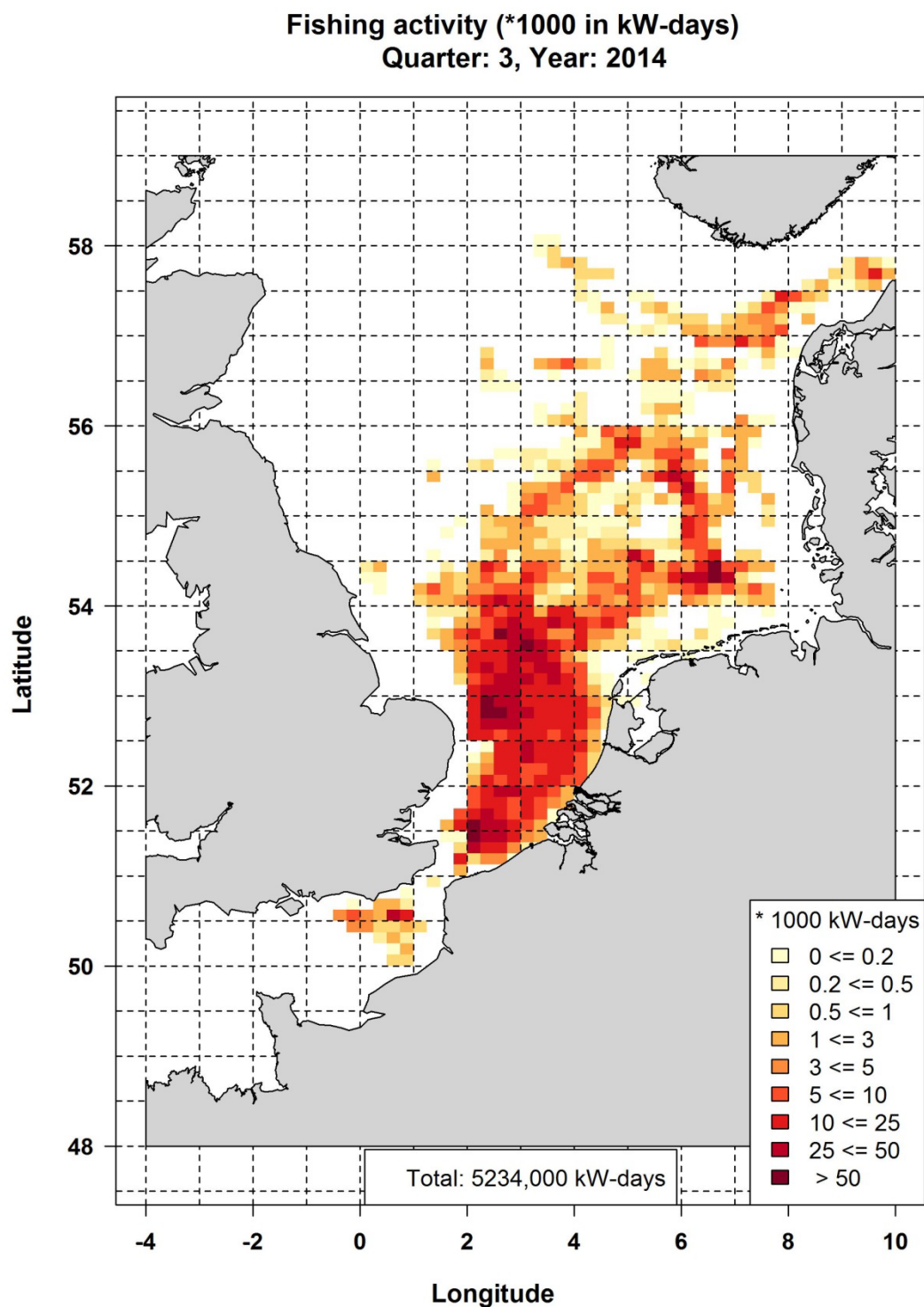


Figure 1. Fishing activity (in *1000 kW-days) for all TR and BT2 gears together in quarter 3 in 2014. The box underneath the map shows the total fishing activity for all gears combined in this quarter.

Fishing activity is dominated by BT2 gears, with only a small contribution of TR gears (figure 2, table 2). The TR2 fleet is the most active fleet within all TR gears, with an effort of 532 *1000 kW-days. It is mainly located in the central and southern North Sea and in the German Bight (around 54.25° N, 6.5° E).

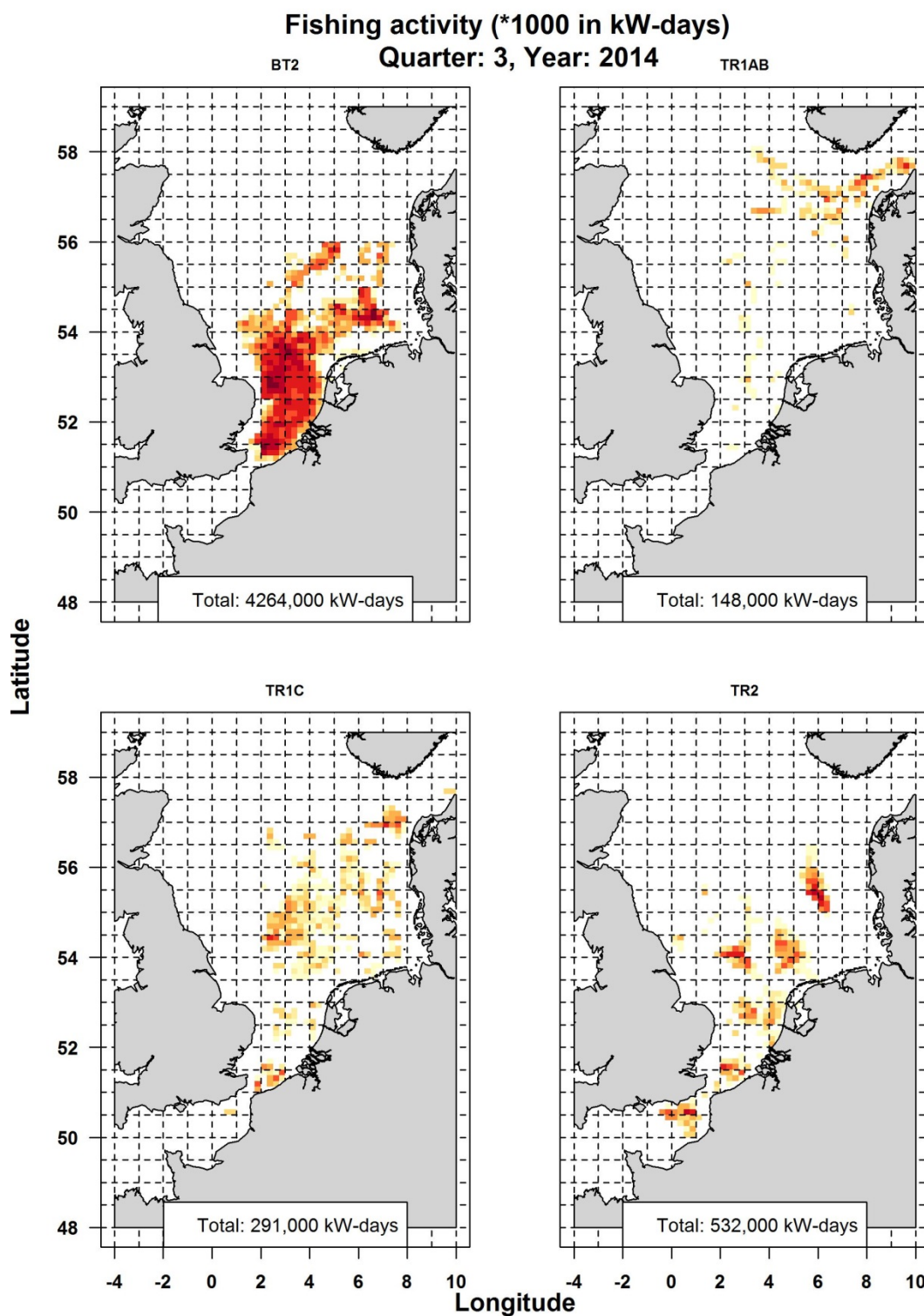


Figure 2. Fishing activity (in kW-days/1000) for the BT2, TR1AB, TR1C and TR2 gear types separately. Colour index is similar to figure 1. The box underneath each map shows the total fishing activity (in kW-days) per gear for this quarter.

3.2 Cod landings

Most landed cod was caught at the opening of the Skagerrak, at 57°N, 8° E (figure 3). In The Falls (around 51° N, 2° E), a peak in cod landings can be observed as well.

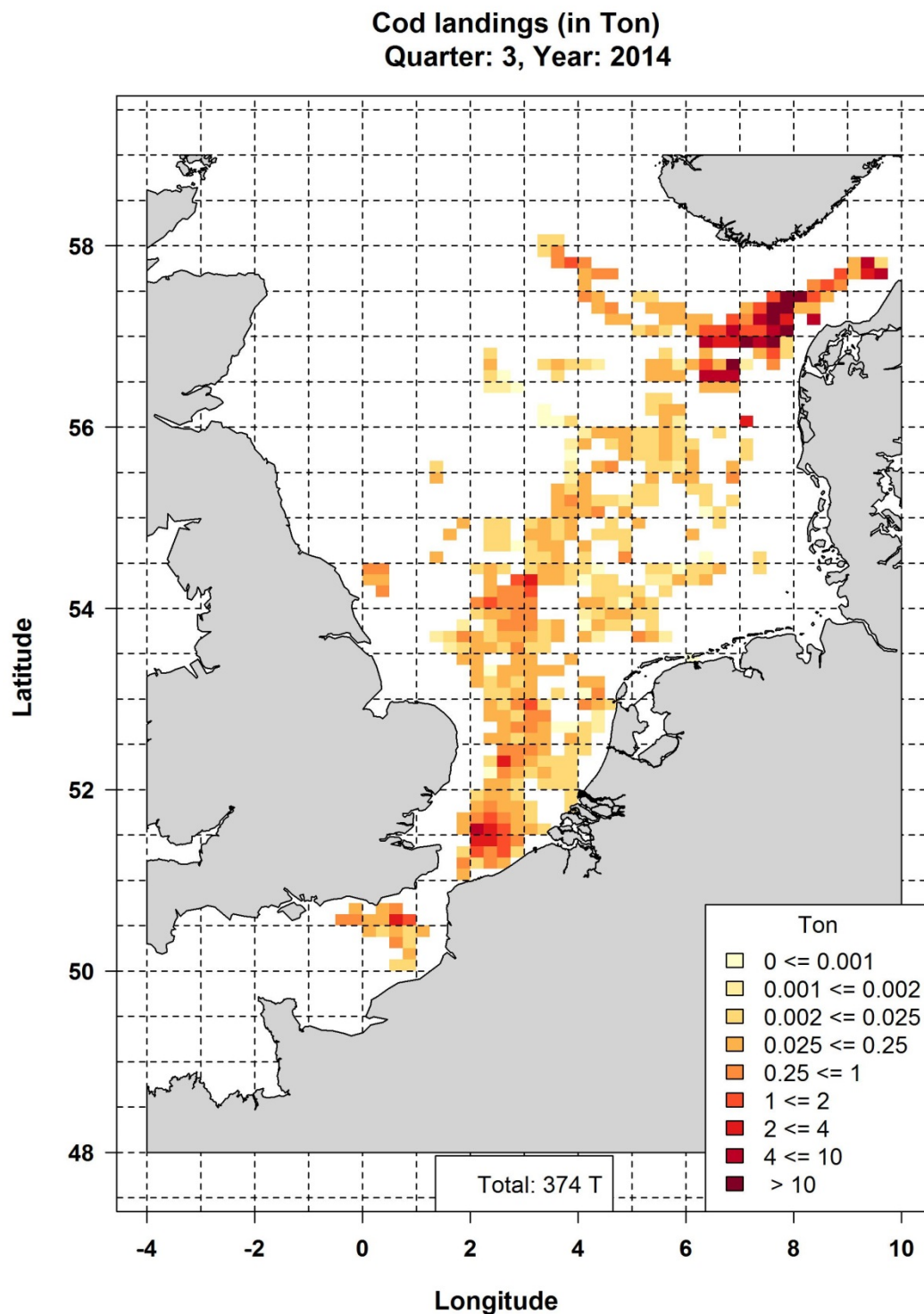


Figure 3. Cod landings (in Ton) for all TR and BT2 gears together in quarter 3 in 2014. The box underneath the map shows the total cod landings for all gears combined in this quarter.

In the third quarter, most landed cod was caught by TR1AB gears (figure 4, table 2). This fleet segment is responsible for the high catches in the opening of the Skagerrak, although the TR1C segment is catching cod in that area as well.

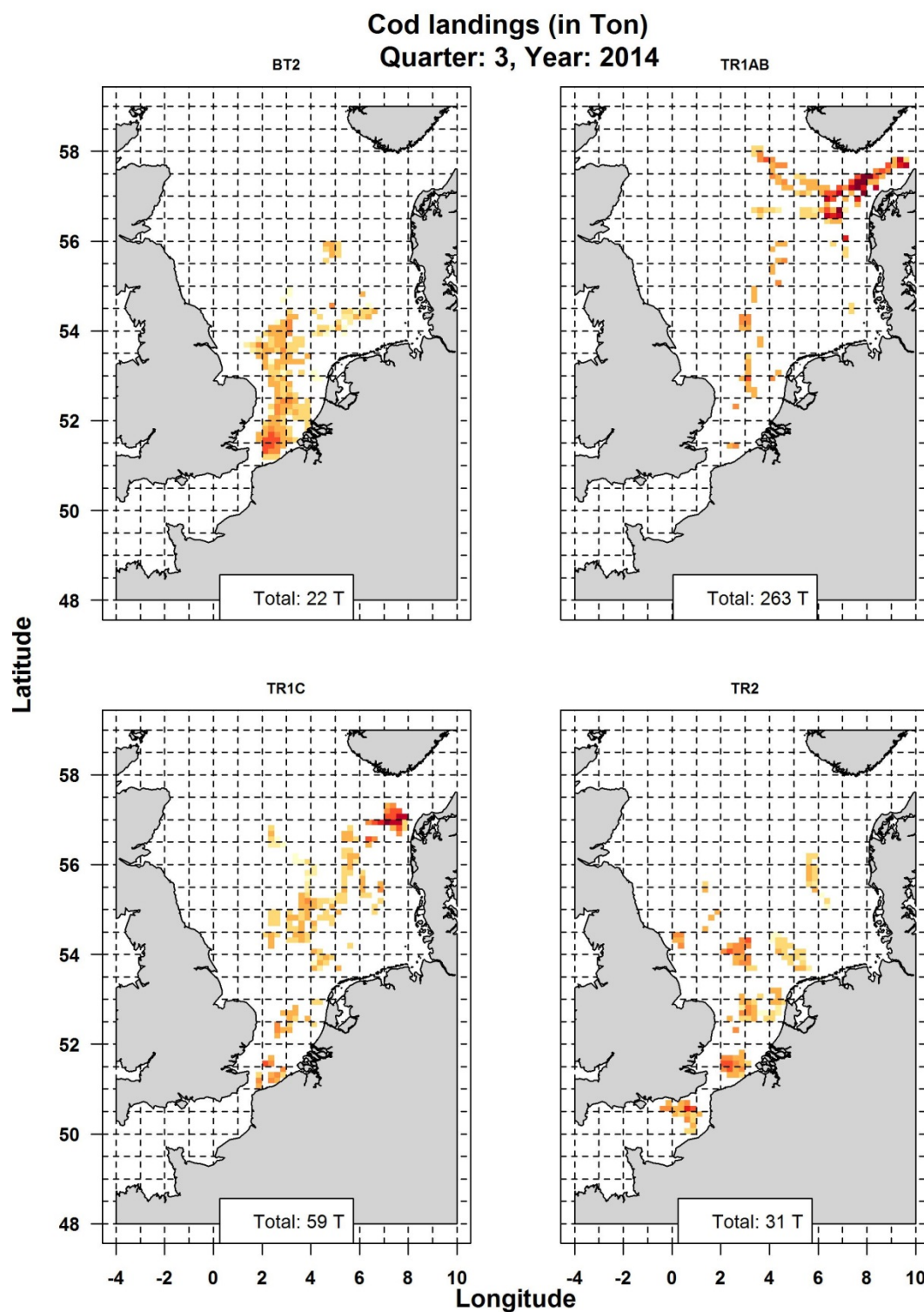


Figure 4. Cod landings (in Ton) for the BT2, TR1AB, TR1C and TR2 gear types separately. Colour index is similar to figure 3. The box underneath each map shows the total cod landings (in Ton) per gear for this quarter.

3.3 Cod LpUE

Per 1/16th ICES rectangle, the cod landings per unit effort (LpUE) can be calculated by dividing the cod catch (in kg) by the fishing effort (in kW-days) (figure 5).

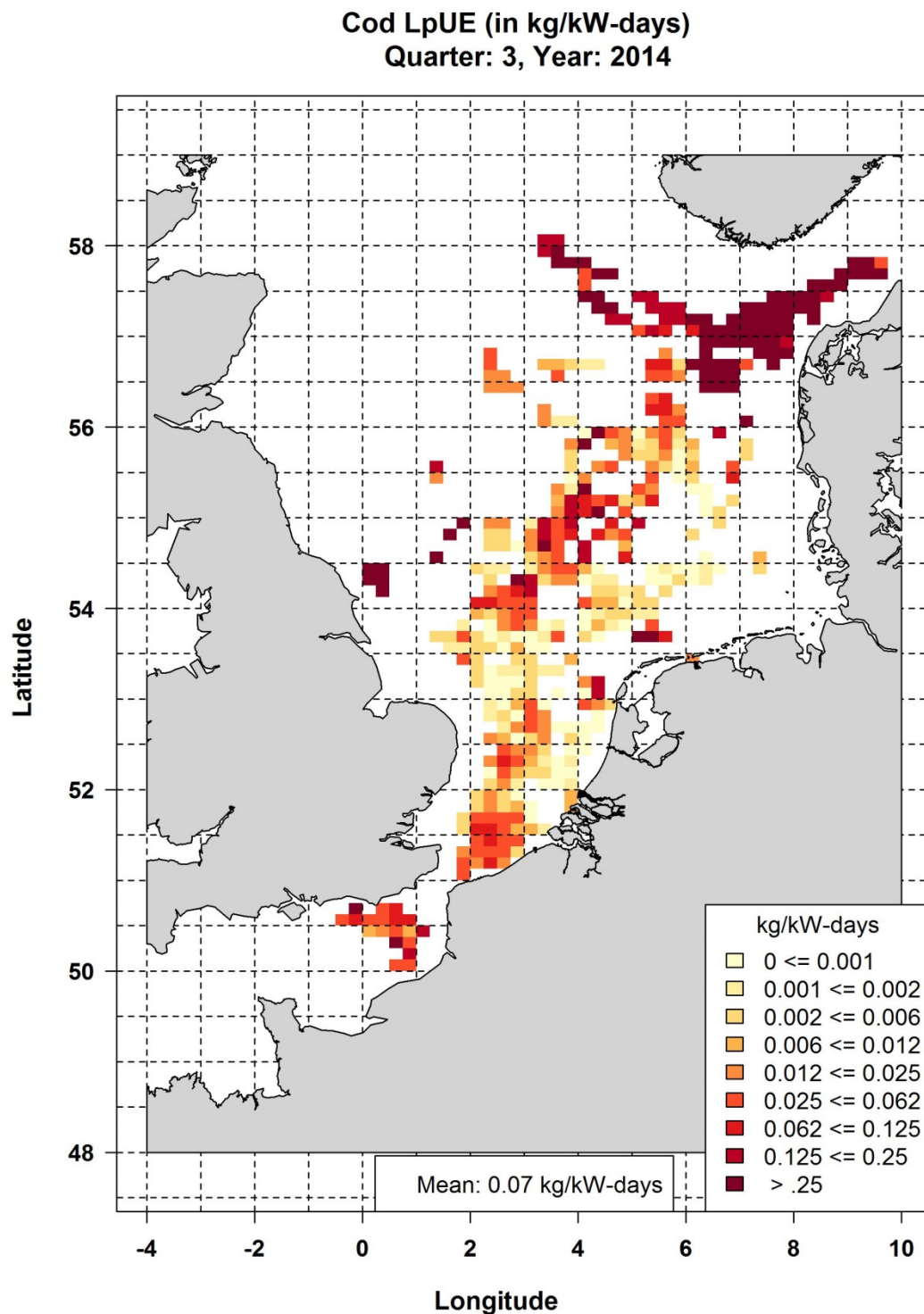


Figure 5. Cod LpUE (in kg/kW-days) for all TR and BT2 gears together in quarter 3 in 2014. The box underneath the map shows the total LpUE for all gears combined in this quarter.

The TR1AB gear had the highest landings of cod per unit effort on average (1.78 kg/kW-days) (figure 6, table 2), followed by the TR1C fleet (0.2 kg/kW-days). Whereas the LpUE of the TR1AB and TR1C are both highest in the opening of the Skagerrak, the TR2 fleet had a high LpUE in The Falls.

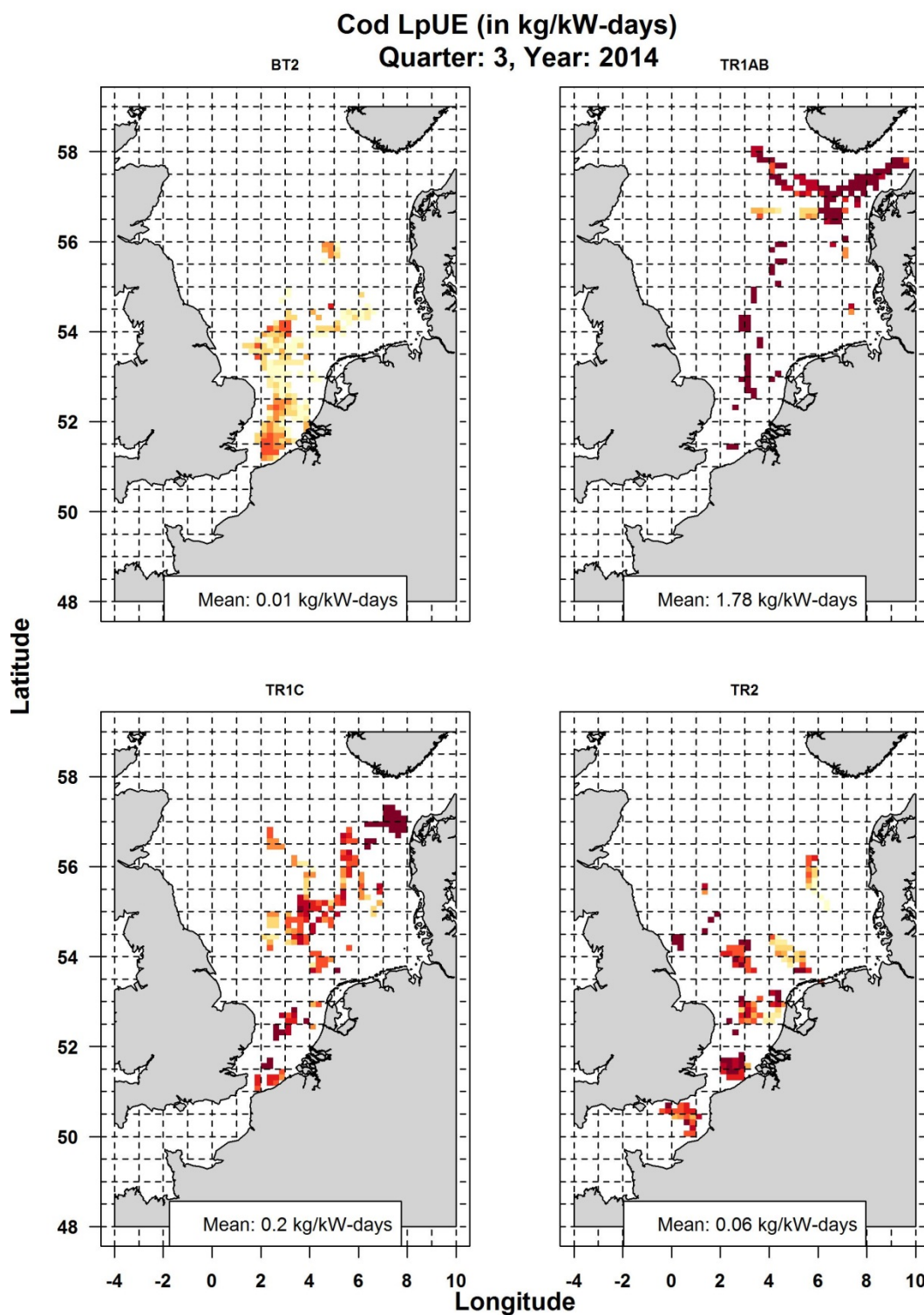


Figure 6. Cod LpUE (in kg/kW-days) for the BT2, TR1AB, TR1C and TR2 gear types separately. Colour index is similar to figure 5. The box underneath each map shows the total LpUE (in kg per kW-days) per gear for this quarter.

4. Summary

In quarter 3 the fishing effort of the TR fleet is dominated by the TR1C fleet. This fleet is located widespread over the North Sea (figure 2). The TR2 fleet is fishing more in the central North Sea, with some activity near the English coast. The TR1AB fleet is the least active segment of all TR fleets, mainly located at the opening of the Skagerrak. The effort of the beam trawl fleet is substantially higher (~80% of total fishing activity), with most of the fishers probably aiming for plaice and sole. This fishery is spread all over the North Sea, but is concentrated in the Southern part of the North Sea, in the German Bight and at the Doggersbank.

The TR1AB fleet is responsible for the majority of the cod landings, with 263 tonnes of the 374 tonnes in total, representing ~70% of the total cod landings (figure 4, table 2). These cod are mainly caught at the opening of the Skagerrak. The TR2 segment has much lower cod landings, however due to low fishing effort TR2 is responsible for high LpUE in the southern part of the North Sea.

Fishing activity of the TR1AB fleet is similar to quarter 2 (Reijden *et al.* 2015b), and much higher than in quarter 1 (Reijden *et al.* 2015). LpUE of the TR1AB have decreased from 2.33 (quarter 1) and 2.66 (quarter 2) to 1.78. However, relative to the total cod landings of each quarter, the landings of the TR1AB fleet have increased in the second quarter (from 14% (quarter 1) to 79% (quarter 2)), but levelled in quarter 3, with 70%. As no clear differences in spatial distribution nor fishing effort can be observed between quarters 2 and 3, the decrease in LpUE may suggest that cod abundance at the fishing grounds is lower in quarter 3. This could be caused by an overall decrease or a spatial change in cod abundance.

The TR1C fleet has low activity in the first quarter of the year (Reijden *et al.* 2015a), but fishing activity is similar between quarter 2 and 3 (Reijden *et al.* 2015b). LpUE of TR1C fleet has increased from 0.06 (quarter 2) to 0.20 in quarter 3, although no remarkable differences could be observed in spatial pattern of the fishing activity. This may suggest that at the fishing grounds of the TR1C fleet cod is locally more abundant than in quarter 2. Possibly, this increase in cod is a consequence of the decrease in cod at the fishing grounds of the TR1AB fleet.

For facilitating comparisons between quarters, the quarterly totals of fishing activity and cod landings and the quarterly average LpUE are shown in Table 2. If the kW-days transition between the BT and the TR gears for which cod is bycatch (TR1C and TR2) was determined based on the LpUE in quarter 3, the conversion factor would be 21:1. However, as the conversion factor is determined on yearly LpUE, the calculated factor in this report is only an indicator.

Table 2. A summary of fishing activity (% of total), cod landings (% of total) and average LpUE for the 4 gears separately and the overall total for quarter 3.

	Fishing activity (*1000 kW-days)		Cod Landings (Ton)		Average LpUE (kg per kW-days)
BT2	4264	(81.5%)	22	(5.9%)	0.01
TR1AB	148	(2.8%)	263	(70.3 %)	1.78
TR1C	291	(5.6%)	59	(15.8%)	0.20
TR2	532	(10.2%)	31	(8.3%)	0.06
Total	5234		374		0.07

Quality Assurance

IMARES utilises an ISO 9001:2008 certified quality management system (certificate number: 124296-2012-AQ-NLD-RvA). This certificate is valid until 15 December 2015. The organisation has been certified since 27 February 2001. The certification was issued by DNV Certification B.V. Furthermore, the chemical laboratory of the Fish Division has NEN-EN-ISO/IEC 17025:2005 accreditation for test laboratories with number L097. This accreditation is valid until 1th of April 2017 and was first issued on 27 March 1997. Accreditation was granted by the Council for Accreditation.

References

EC 423/2004. Council Regulation (EC) No 423/2004 of 26 February 2004 establishing measures for the recovery of cod stocks. Available at: <http://eur-lex.europa.eu/legal-content/EN/ALL/?uri=CELEX:32004R0423>

EC 1342/2008. Council Regulation (EC) No 1342/2008 of 18 December 2008 establishing a long-term plan for cod stocks and the fisheries exploiting those stocks and repealing Regulation (EC) No 423/2004. Available at: <http://eur-lex.europa.eu/legal-content/EN/ALL/?uri=CELEX:32008R1342>

Hintzen, NT, A Coers and KG Hamon (2013) A collaborative approach to mapping value of fisheries resources in the North Sea (part 1: Methodology). IMARES report C001/13. (available at: <http://edepot.wur.nl/248628>)

Kraan, ML, SS Uhlmann, MAM Machiels, HMJ van Overzee and ATM van Helmond (2013) Monitoring of cod catches in Dutch otter trawls and seines. IMARES report C077/13.

Kraan, ML, MAM Machiels, KJ van der Reijden and AJ Paijmans (2014) Monitoring of cod catches in Dutch otter trawls and seines. IMARES report C105/14.

Ministry of Economic Affairs (2014). "Brief over nieuwe aanpak kabeljauwmonitoring." Letter. (available at: <http://www.rijksoverheid.nl/documenten-en-publicaties/brieven/2014/11/28/brief-over-nieuwe-aanpak-kabeljauwmonitoring.html>)

Reijden, KJ van der, MAM Machiels and ML Kraan (2015a) Cod monitoring: Results 2014, quarter 1. IMARES report C029/15.

Reijden, KJ van der, MAM Machiels and ML Kraan (2015b) Cod monitoring: Results 2014, quarter 2. IMARES report C069/15.

Justification

Report C070/15
Project Number: 4308101082

The scientific quality of this report has been peer reviewed by the a colleague scientist and the head of the department of IMARES.

Approved: Ralf van Hal
Researcher

Signature:



Date: 29th of April 2015

Approved: Nathalie Steins
Head of department Fisheries

Signature:



Date: 29th of April 2015

Appendix A. Extended Materials and Methods

Data pre-processing

VMS and logbook data were received from the Ministry of Economic Affairs and stored in a local database at IMARES.

VMS records are considered invalid and are therefore removed from the analyses if they :

- o Are duplicates or pseudo-duplicates (indication of malfunctioning of VMS device)
- o Identify an invalid geographical position
- o Are located in a harbour
- o Are located on land
- o Are associated with vessel speeds > 20 knots

Logbook records are removed from the analyses when they:

- o Are duplicates
- o Have arrival date-times before departure date-times
- o Overlap with other trips of that vessel

Link VMS and logbook data

VMS and logbook datasets are linked using the unique vessel identifier and date-time stamp in both datasets available. In other words, records in the VMS dataset that fall within the departure-arrival timeframe of a trip described in the logbook are assigned the unique trip number from the logbook record which allows matching both datasets. The following gear types were selected as TR gear: OTB (Otter bottom trawls), OTT (Otter Twin Trawls), PTB (Pair Bottom Trawls), SDN (Danish Seine), SSC (Scottish Seines), SPR (Pair Seine). All TR gears are further divided based on their mesh size, following TR1AB: $\geq 120\text{mm}$, TR1C: 100 – 119mm, TR2: $< 100\text{mm}$. The BT gear is defined as TBB (Beam Trawls) gear type. This consists not only of the traditional beam trawl; all innovative sub-gears like sumwing, pulse and pulswing are included in the BT gear. Next, the BT gear is further classified into categories, based on mesh size. The used gear type BT2 includes all BT vessels operating with a mesh size of 70-99mm.

Define fishing activity

Speed recordings obtained from VMS data are used to create frequency plots of these speeds, where along the horizontal axis the speed in knots is given and the vertical axis denotes the number of times that speed was recorded. In general, 3 peaks can be distinguished in such a frequency plot. A peak near 0 knots, associated with harbour/floating, a peak around the average fishing speed and a peak around the average steaming speed. Using the frequency plots, activity is determined for each VMS-point based on the speed recorded. Activity analyses are performed separately for each gear category.

Spatial distribution

The fishing activity determined from the logbooks (kW-days) and the cod landings recorded in the logbooks (kg), are assigned to those (fishing) VMS records that have vessel id, fishing date and fishing position in common. At the spatial scale of 1/4 degree longitude* an 1/8 degree latitude (1/16 ICES rectangle), the total landings of cod (kg) and fishing activity (kW-days) are calculated. Subsequently LpUE (landings per unit effort) can be calculated for each 1/16 ICES rectangle by dividing the landings by the activity.