



# Formulation of the Bangladesh Delta Plan 2100 overview and first steps

## BANDUDELTA BDP 2100

### BANGLADESH DELTA PLAN 2100

*Presentation for the Gobeshona  
Conference on Research on Climate  
Change in Bangladesh, at IUB, Dhaka*

**Catharien Terwisscha van Scheltinga**

Climate Change Expert, Director Wageningen UR Project Office Dhaka

[Catharien.Terwisscha@wur.nl](mailto:Catharien.Terwisscha@wur.nl)





## Overview

1. Introduction
2. What is a Delta Plan
3. Netherlands Delta Plan
4. Bangladesh Delta Plan 2100: overview and first steps
5. Knowledge use in the Bangladesh Delta Plan
6. Questions/discussion



Photo credit: Carel de Groot

## INDEX

# 1. Introduction

**Catharien Terwisscha van Scheltinga**

**Climate change expert in BDP  
formulation team**

**Director Wageningen UR Project  
Office Dhaka**

**Sharing information on  
Bangladesh Delta Plan;  
Asking your help**



---

Bangladesh Dutch Delta Advisory  
Services (BanDuDeltAS)

## 2. What is a Delta Plan (and why would Bangladesh need one)

---

Bangladesh Dutch Delta Advisory  
Services (BanDuDeltAS)



# Delta Plan

What is a Delta Plan?

- An indicative plan
- To improve safe living and sound economic development in the delta
- Longer term time frame (50 to 100 years)
- Integrated and holistic plan
- Based on a vision about the future
- Need to cope with uncertainty and complexity – using vision and scenario development can help
- Different approach to planning!
  - Not: knowing it all first, and then doing something
  - But: Parallel start between policy, research, implementation
  - Requires: Change in mindset (not business as usual)

Photo credit: Catharien Terwisscha van Scheltinga

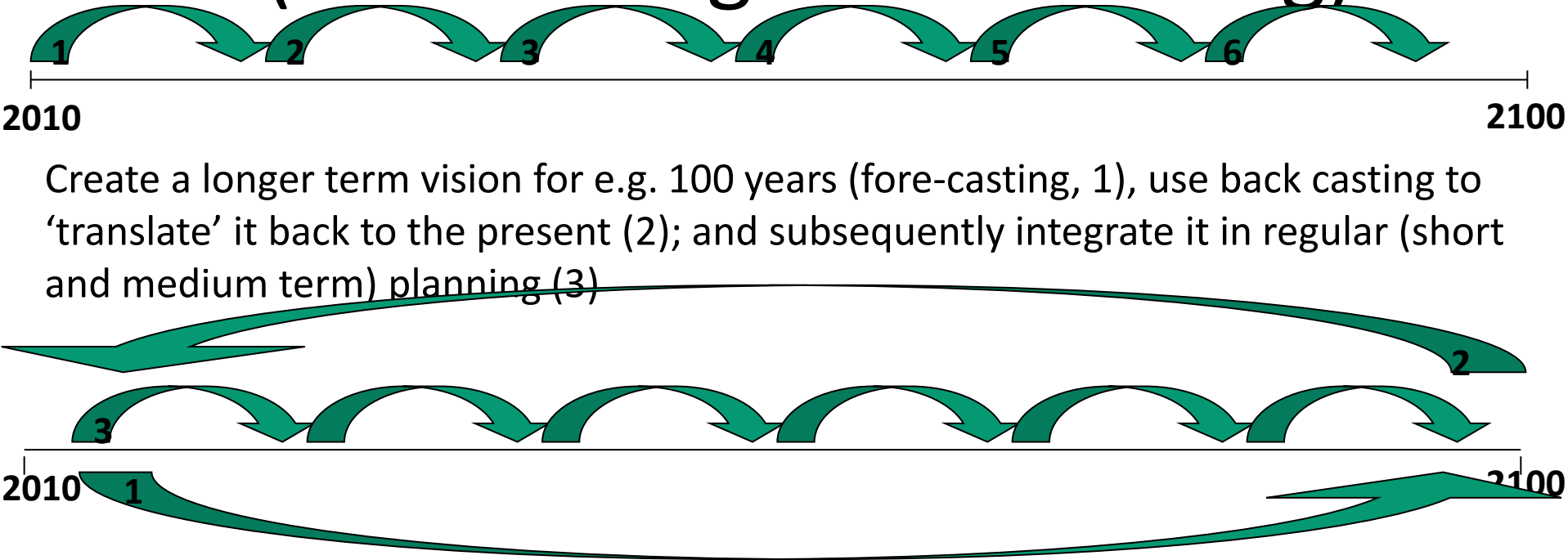


## II. What is a Delta Plan

Unusual business!

# Working with a longer term vision

Instead of: (fore-casting – back-casting)



# Importance of a Delta Plan for Bangladesh

Need of a Long Term Delta Vision and Program



Bangladesh:

- Shows consistent average economic growth rate of 6%
- Is on its way to become middle-income country by 2021

However,

- Climate change is threatening these significant achievements, as it is related to delta issues as flooding and droughts, sea level rise, salt-water intrusion, access to fresh water, which influence water safety, food production and economic growth

Challenges:

- A long term integrated approach to water safety, food security and economic growth in relation to future water and land management
- An Institutional and governance setting to make such long term holistic Delta Plan 2100 approach possible and implementable
- Priorities for investments for the future to be set today

## II. What is a Delta Plan

### 3. The Delta Plan in the Netherlands

1953

2008

<http://www.deltacommissaris.nl/english/>

**5 points for consideration:  
Delta program, Delta decisions, Delta  
Commission, Delta Act and Delta Fund  
(5D)**

---

Bangladesh Dutch Delta Advisory  
Services (BanDuDeltAS)



## 4. The Bangladesh Delta Plan 2100

### Developing Strategies for Adaptive Delta Management in the Face of Climate Change

**Launching Date:  
27 Aug 2014**

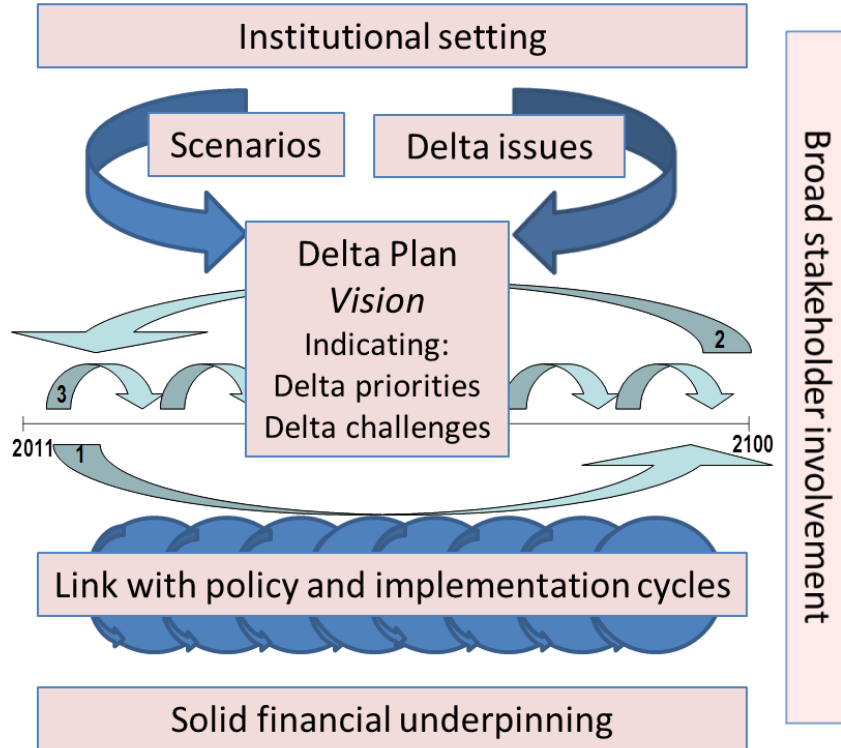
**General Economic Division (GED)  
Planning Commission**

**Embassy of Kingdom of The Netherlands (EKN)**

---

Bangladesh Dutch Delta Advisory  
Services (BanDuDeltAS)

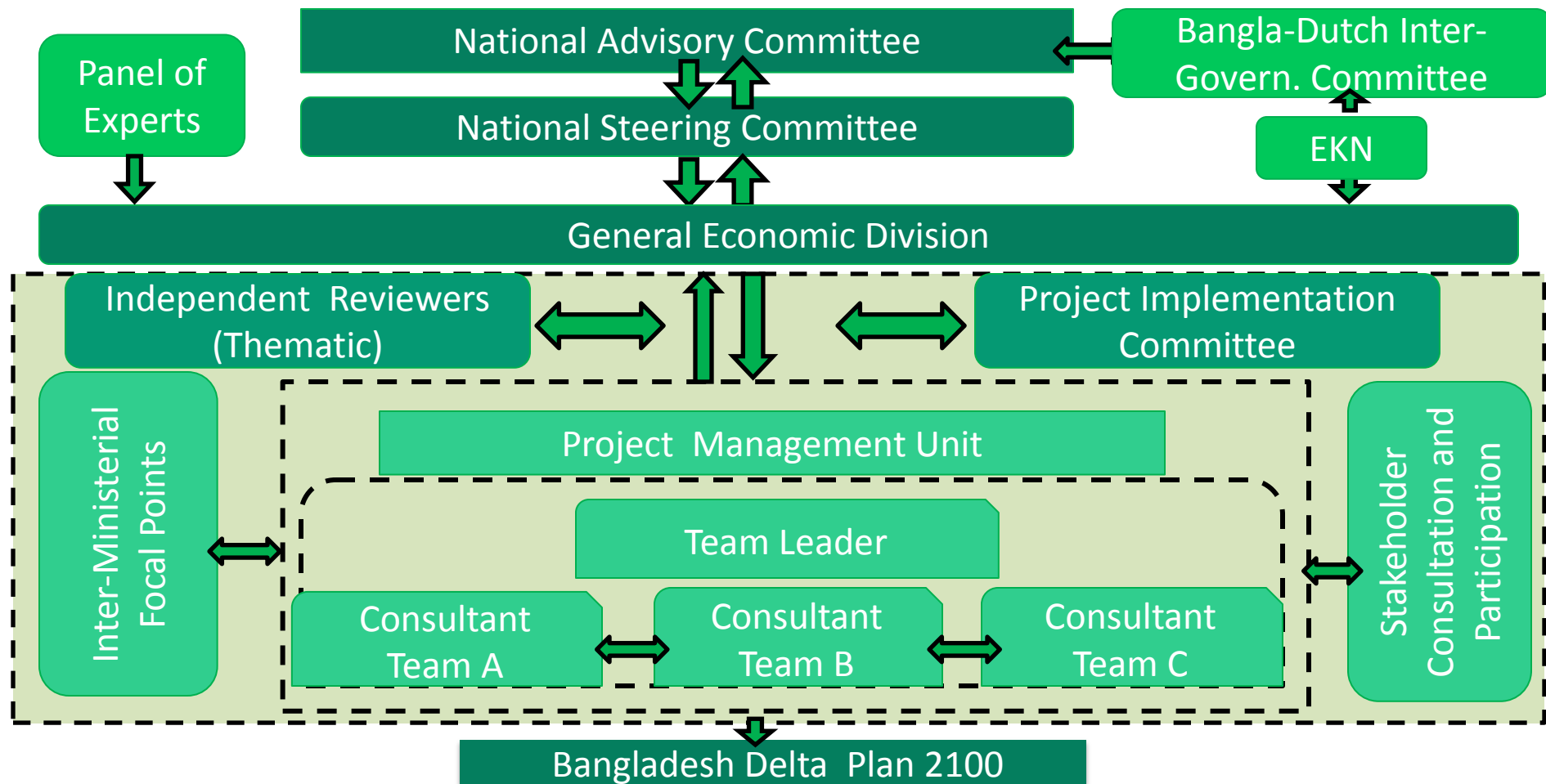
# Key elements Bangladesh Delta Plan



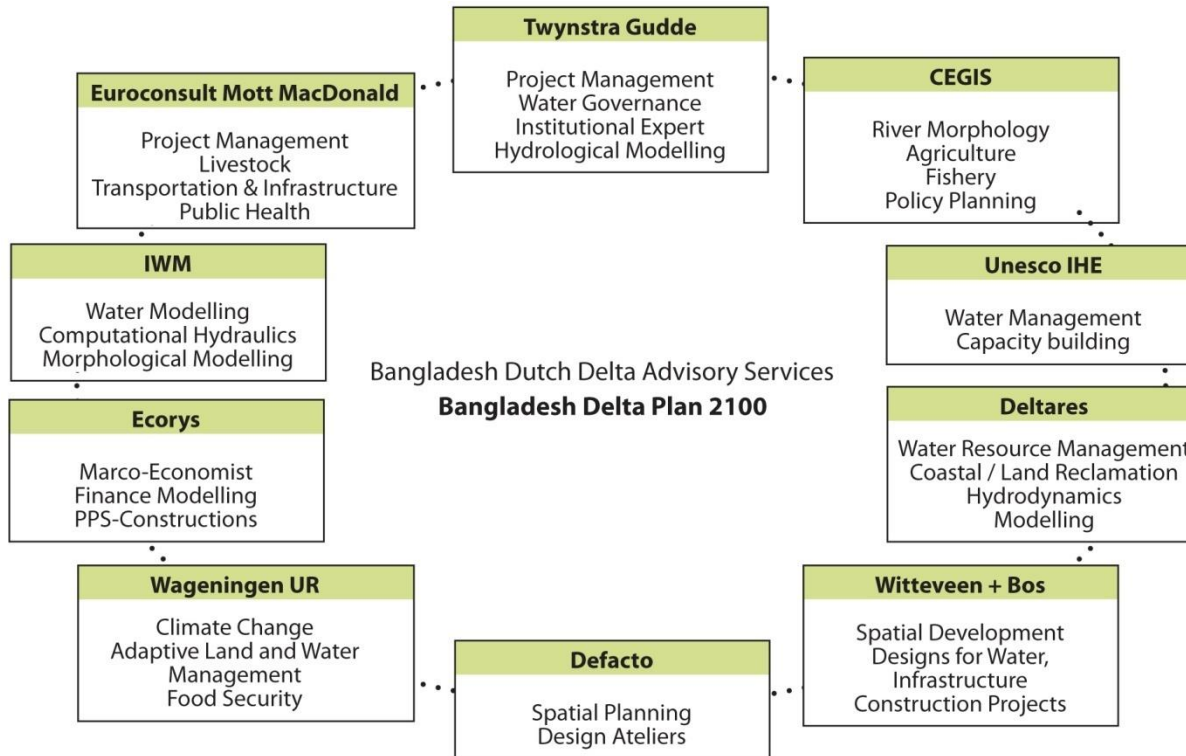
Choudhury et al, 2012  
([www.bangladeshdeltaplan.org](http://www.bangladeshdeltaplan.org))

## II. What is a Delta Plan

## Overall Organization



# Partners to GoB/GoN: BanDuDeltAS



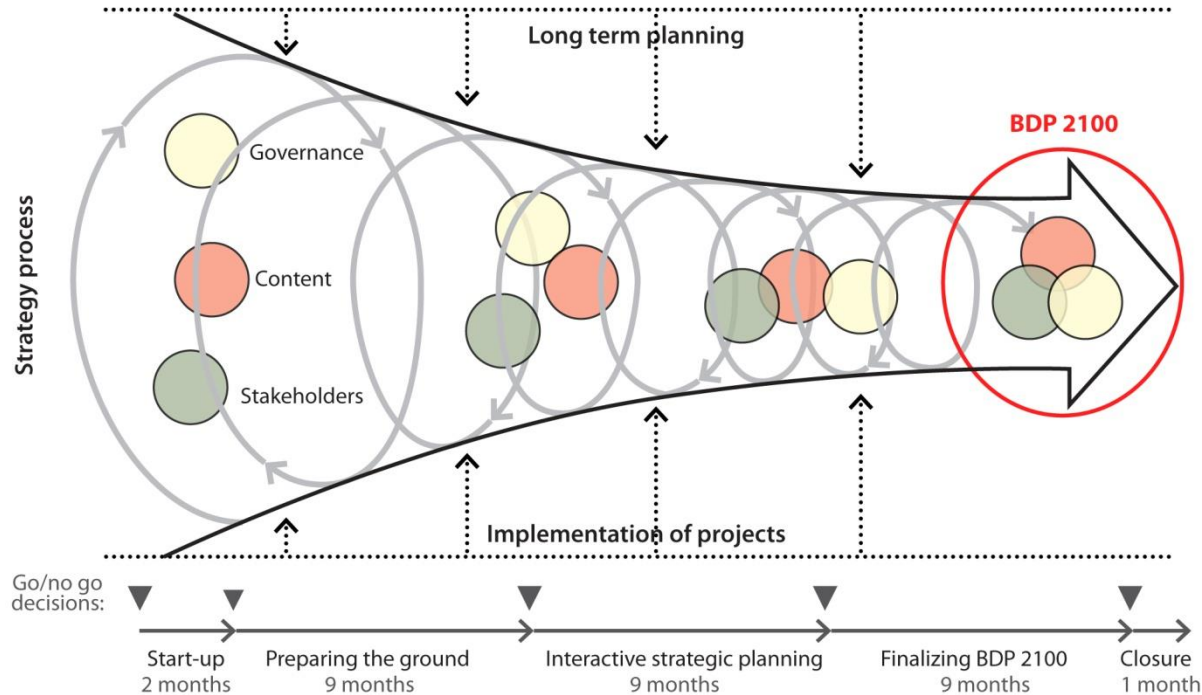
Plus sub contractor:  
Climate Adaptation  
Services foundation

## IV. Bangladesh Delta Plan 2100



# Interactive Strategic Planning process

Governance, Content, and Stakeholders will come together, via learning cycles

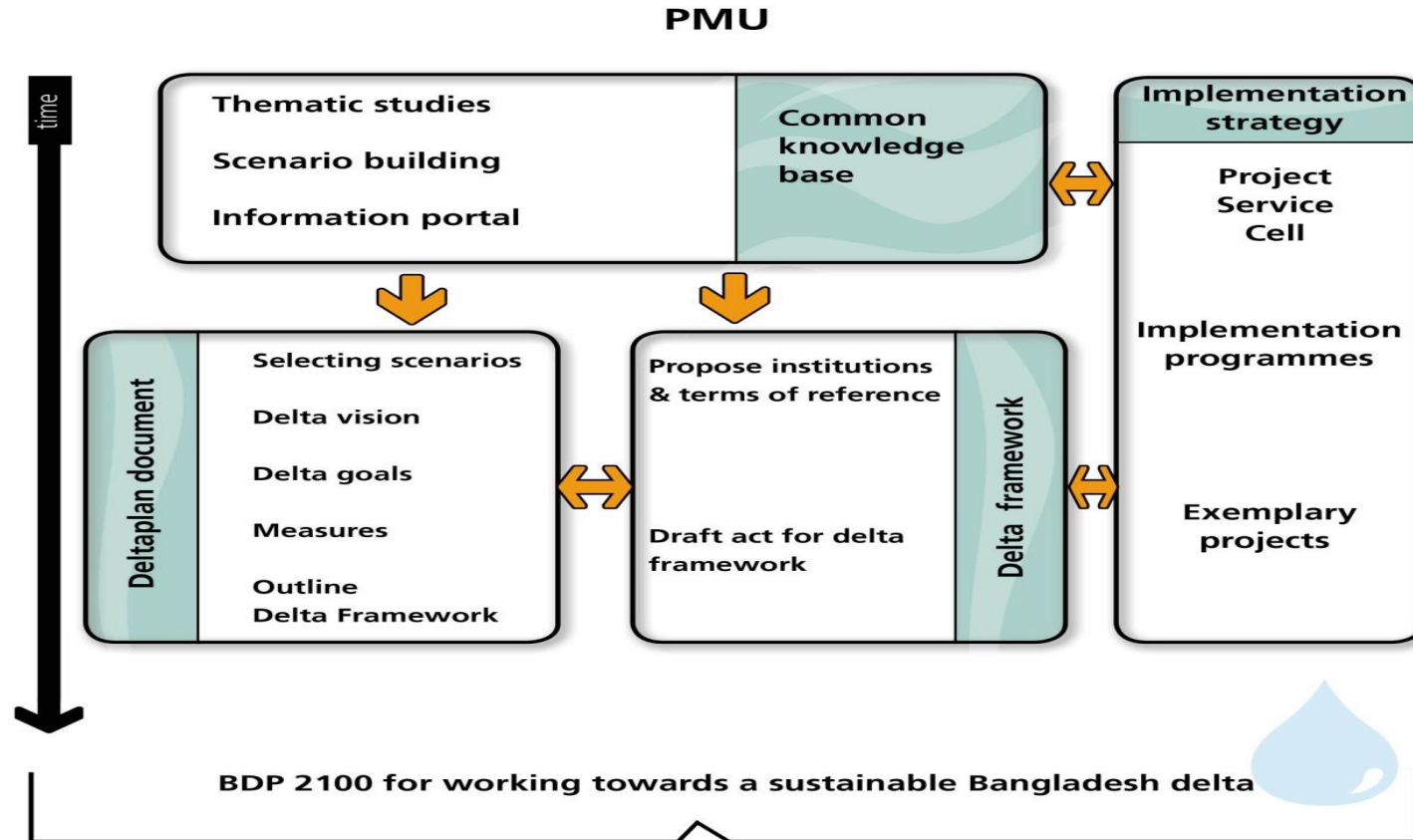


Concepts:

- Planning as Learning
- Adaptive Management
- Strategy Process sense-making - sensegiving

## IV. Bangladesh Delta Plan 2100

## Overall Process



# Clustering of Themes and Baseline Studies

## **Water Resources**

- I. Morphological dynamics of Bangladesh Delta
- II. Water resources
- III. Coastal Polder issues

## **Water Supply and Sanitation**

- I. Public health, water supply and sanitation

## **Disaster Risk Reduction**

- I. Climate change issues
- II. Disaster management

## **Spatial Planning**

- I. Land resources
- II. Urbanization and settlement

## **Food Security**

- I. Agriculture and food security
- II. Fisheries and livestock

## **Environmental Management**

- I. Ecological Settings
- II. Forest and biodiversity
- III. Environmental pollution

## **Economics and Finance**

- I. Growth of Population and Management in the context of resources setting
- II. Socio-economic and demographic condition
- III. Sustainable Transportation and Infrastructures

## **Governance**

- I. Information and creation of knowledge management Institution
- II. Institutional framework/arrangement
- III. Regional cooperation

Eight Clusters with 19 themes to be studied

The Baseline Studies include:

- Quick scans
- Start up Document with Study Plans
- Study of Baseline Conditions

## **IV. Bangladesh Delta Plan 2100**

## Overall expected outputs

- Inception Report
- Background Reports on the delta themes creating a common Knowledge Base by sharing those studies and data with stakeholders involved
- Input for the 7th Five Year Plan
- An Institutional Delta Framework which contributes to BDP 2100 formulation and realization of new projects in line with the BDP 2100
- A Delta Plan Document with Vision, Scenarios, Strategies/Measures and Program
- Implementation Strategy and Guideline for the coming 5 to10 years with geographical and sectoral priorities for BDP 2100 implementation, including 2 - 3 projects developed parallel to the BDP 2100 formulation



BANDUDELTA  
BDP 2100

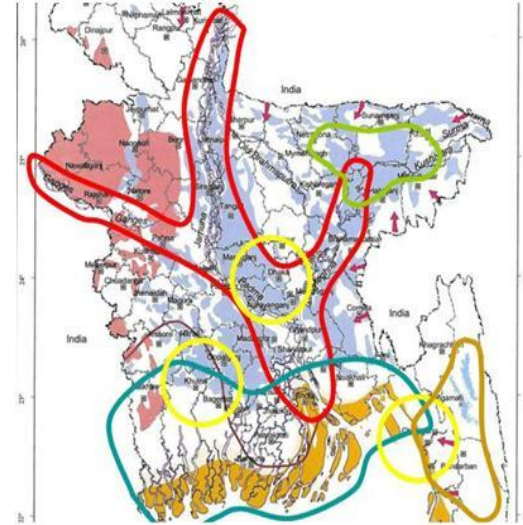
- June 2014
- December 2014
- March 2015
- 2015
- 2016
- 2016

### IV. Bangladesh Delta Plan 2100



# Use of knowledge and integrated analysis

- Initial Delta Vision will be based on the baseline studies:
  - vision elements and goals generating a first Delta Vision
  - reflecting on and responding to physical development options
  - defining the sectoral, institutional, and financial environment where the physical developments need to be embedded
- Hotspot approach:
  - Areas with similar characteristics and challenges
  - Provides insight in inter-sectoral dependencies and relations
  - Hotspot serves as arena for multi stakeholder workshops (Delta Ateliers)
  - Provides a platform for defining no-regret interventions that may be incorporated into the 7<sup>th</sup> Five-Year-Plan
- Delta Ateliers
  - specific workshops in the stakeholder process leading to building blocks in our argumentation



## V. Bangladesh Delta Plan 2100

# BD Delta with Development and Adaptation Challenges

BDP 2100 takes a different point of view



Considering uncertainties  
risks and impacts

Aims at addressing strategic  
questions and choices:

- Vision
- Scenarios
- Pathways & Tipping Points
- Institutional Framework
- Coordinated Action

V. Bangladesh Delta Plan 2100

Thank you!



**BANDUDELTA**  
BDP 2100

[www.bandudeltas.org](http://www.bandudeltas.org)

Road # 83, House # 13/A , NE(K), Level 5  
Gulshan-2, Dhaka-1212, Bangladesh

# Contents of the Baseline Studies

- Baseline conditions on thematic areas: problem definitions, policies, plans, implementation problems / gaps, current measures and interventions, reviews, outputs, outcomes, trends and developments; opportunities
- Identification of relationships between themes; integrated analysis during Baseline Study process; setting priorities
- Input for tentative Delta Vision and first Scenario development (e.g. Climate Change combined with Economic Development or Population Growth)
- First recommendations on probable (alternative) strategies and interventions to address present / future challenges
- Exploration and first design of institutional Delta Framework adequate BDP 2100 governance and implementation and future renewal of the Plan, e.g. including draft Delta Act, Delta Program, Delta Funding

## IV. Bangladesh Delta Plan 2100