

Climate proofing Rotterdam

The Rotterdam Adaptation Strategy

29 September 2010

Drs. Lissy Nijhuis
Engineering Department Public Works
Rotterdam

Rotterdam Adaptation Strategy (RAS)

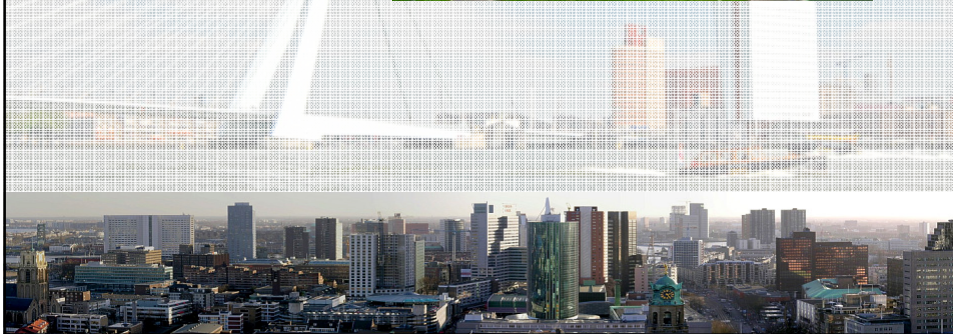
“Rotterdam is climate proof in 2025”

This means:

- Climate change is **incorporated in spatial planning tools** in order to continuously take into account the effects of climate change while developing Rotterdam
- Measures have been taken **to suffer the least and profit the most** from climate change in the next decades.

5 tracks

- Water safety



5 tracks

- Water safety
- City Climate



5 tracks

- Water safety
- City Climate
- Urban water management



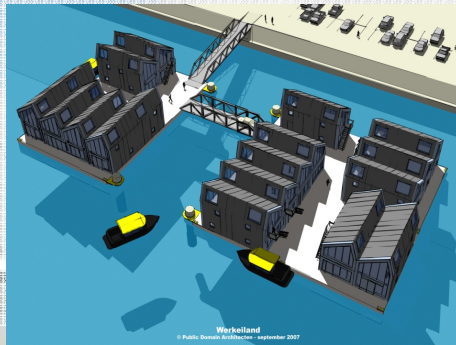
5 tracks

- Water safety
- City Climate
- Urban water management
- Adaptive building



5 tracks

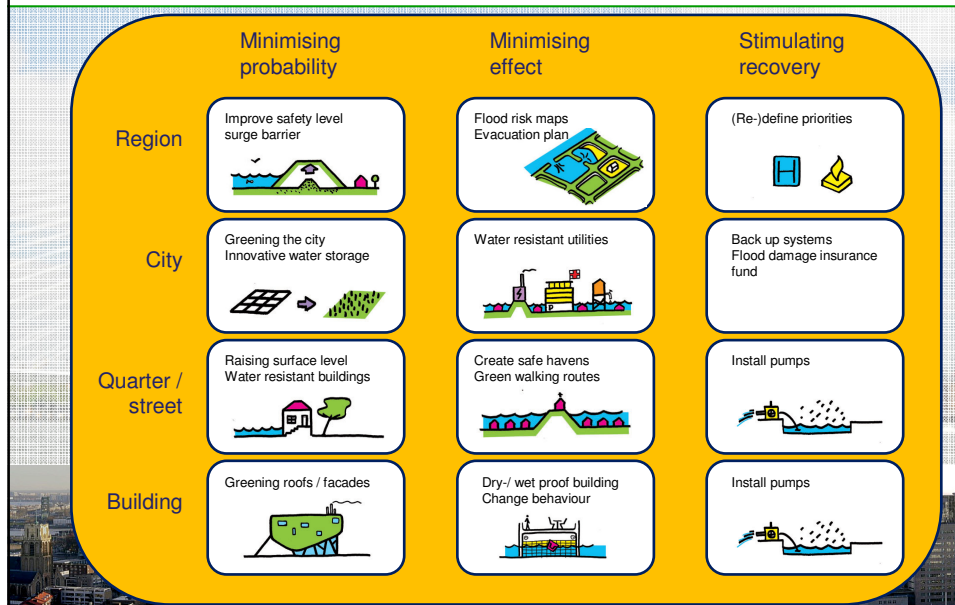
- Water safety
- City Climate
- Urban water management
- Adaptive building
- Accessibility



Several instruments

- Roadmap (1 for each track)
 - ambition 2025 (backcasting)
 - key decisions (forecasting)
- Climate toolbox
 - longlist → shortlist adaptation measures
 - sustainability of measures
 - links between measures
 - contribution to overall project goals

Adaptation strategies matrix: examples of potential measures



Adaptation strategies matrix: examples of potential measures

