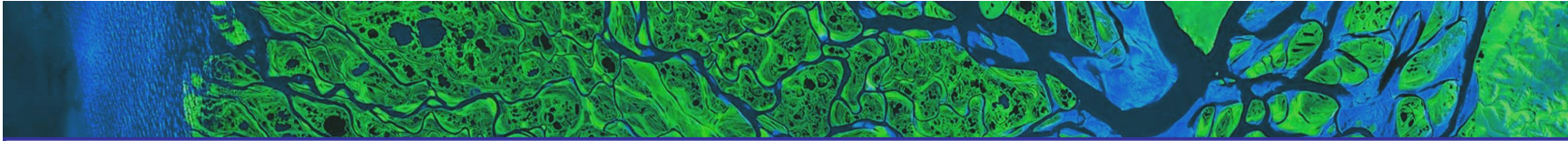


Delta Alliance International

Kees Slingerland, Delta Alliance Acting Chairman
22 April 2010



Introduction

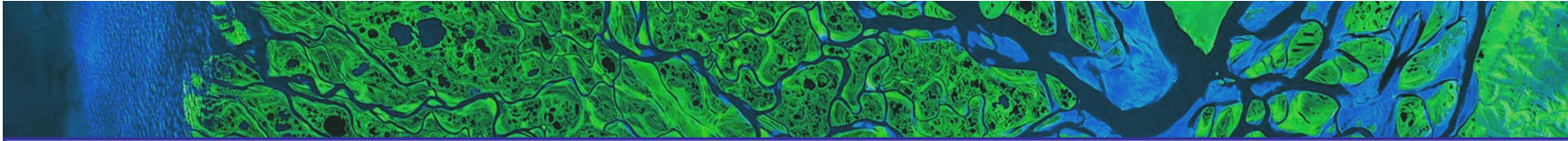
International platform to support knowledge sharing between river deltas worldwide

KvK Funding – to be funded by other bodies in future

WEA partnering

Rotterdam launch – September 2010

First projects to begin late 2010



Why Delta Alliance?

River deltas are **valuable:**

- provide food to the world
- underpin economies
- sustain biodiversity
- home to many people

River deltas are **vulnerable:**

- pollution
- urbanization
- flooding and drought
- land subsidence and erosion
- overall loss of environmental quality

And pressures are **increasing:**

- economic growth
- population growth
- climate change

What will Delta Alliance become?

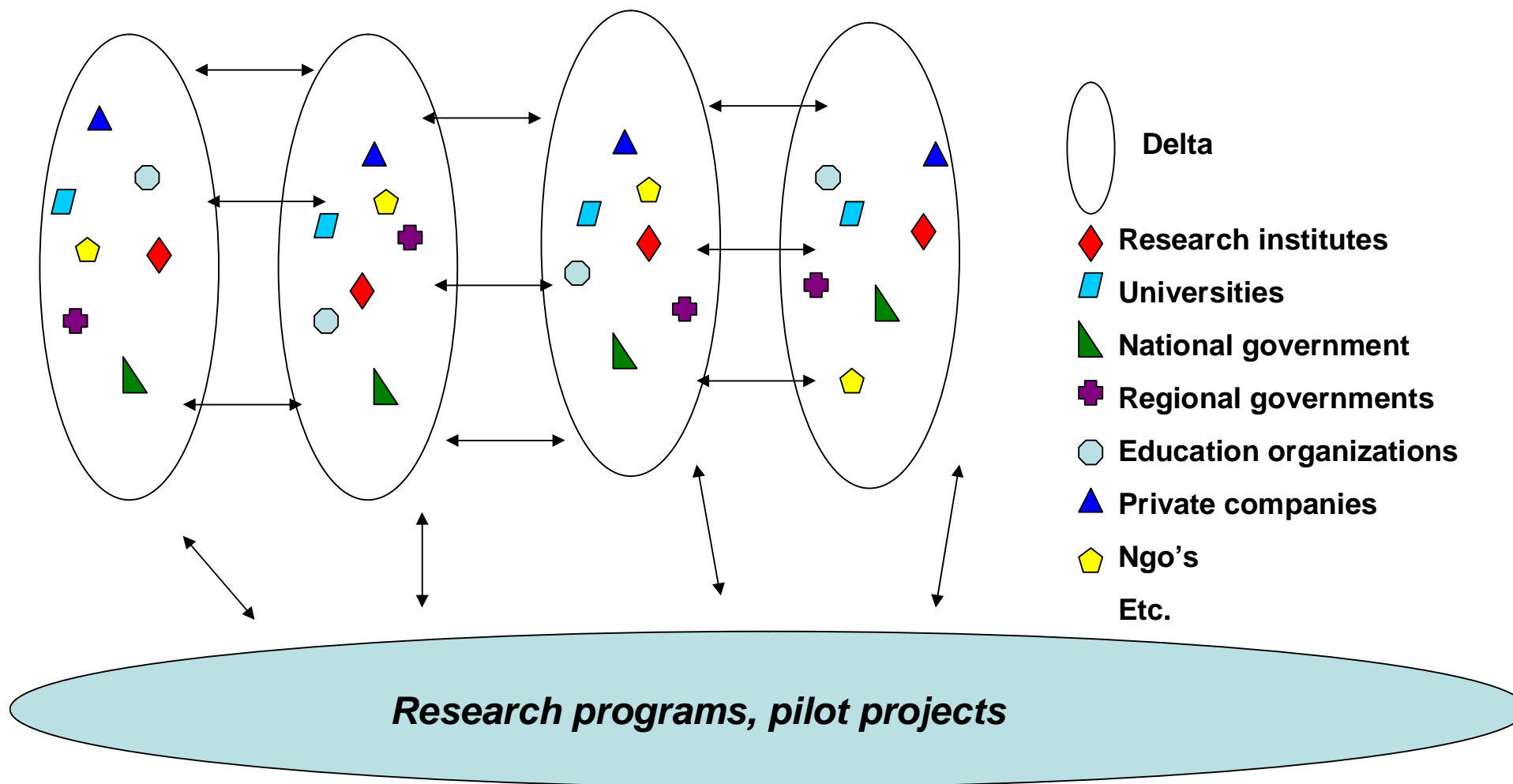
Shanghai, June 2010 – strategy session with partners from deltas

What is needed to support cooperation between deltas?

- More international events?
- An internationally recognized brand for projects?
- An online information platform?
- A network of committed experts?

This is the input we ask from you today.

How could Delta Alliance function?



Delta Alliance wings

- Inner circle:
 - Indonesia
 - Vietnam
 - California
 - The Netherlands
- Launch 2010
 - Nile
 - Ganges/Brahmaputra
 - Chao Phraya
 - Mississippi
 - Yangtze
 - Zambezi
 - Others...

Delta Alliance in California

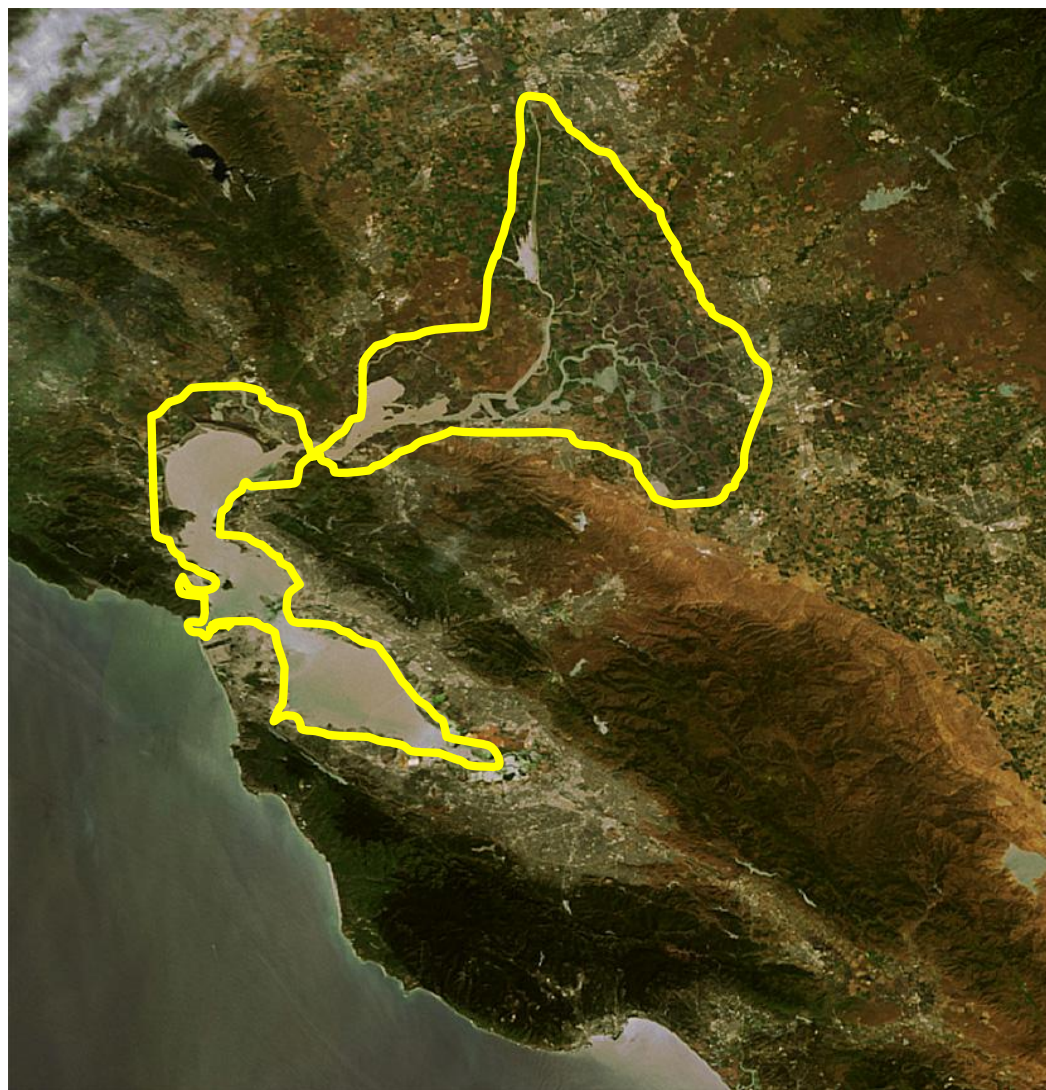


Geographic focus

Northern California

San Francisco Bay
with the San Francisco Bay
Conservation and
Development Commission

**Sacramento San Joaquin
Delta**
with the Delta Stewardship
Council



Major challenges

San Francisco Bay:

- Sea level rise in highly urbanized Bay Area – 7 million inhabitants
- Wetland redevelopment
- Flood management

Sacramento-San Joaquin Delta:

- Infrastructure for fresh water supply to 25 million people in Southern California is build in this estuary
- Sea level rise
- Peat soil subsidence
- Levee integrity
- Sustainable agriculture

Delta Alliance Partners

Lead agencies are 2 state agencies commissioned by the California Natural Resources Agency:

- San Francisco Bay – San Francisco Bay Conservation and Development Commission
- Sacramento-San Joaquin Delta – Delta Stewardship Council

Developing relationships with research community:

- UC Davis – Center for Watershed Sciences
- Stanford University – Institute for the Environment
- UCLA – Institute for the Environment/Climate Academy

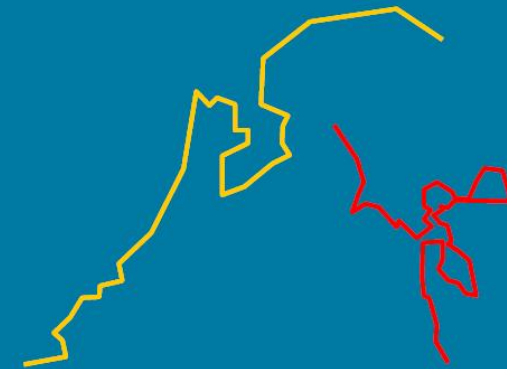
Developing relationship with business community of Silicon Valley:

- San Francisco Bay Area Council

First major joint project and event



San Francisco Bay: Preparing for the next level



21 September 2009



In collaboration with:

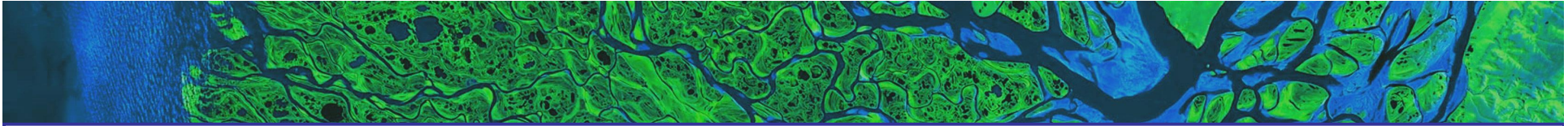


California 2010 goals & activities

- **Make California participation official through partnership agreement and matching funding**
- **California Delta Alliance workshop**
- **Follow up project for 2009 San Francisco Bay project**
- **Initiate first joint pilot project in Sacramento-San Joaquin Delta**
- **California participation in 2010 Rotterdam Climate Change Adaptation Conference**

Delta Alliance in Indonesia

- **Picture**



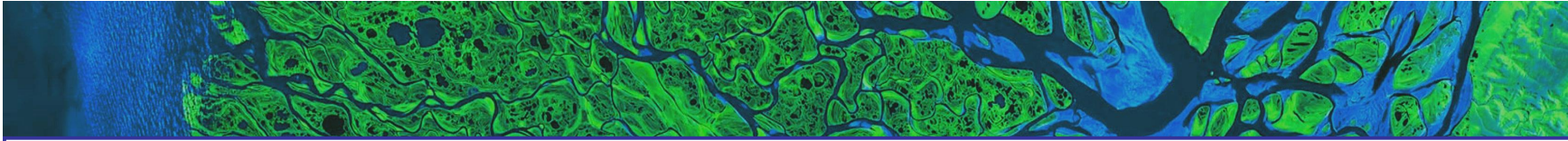
Ciliwung Delta and Mahakam Delta

- **Ciliwung Delta (Jakarta)**
 - Located in Jakarta, the capital city of Indonesia
 - Population = 9 million people (2006), excluding neighbouring cities (Depok, Bogor, Tangerang, Bekasi)
 - River length = ± 102 km, catchment size = 382.6 km², average annual precipitation = 2,700 mm
 - Water for domestic use and industries
- **Threats: flooding, pressure on space, water pollution, land subsidence, salt water intrusion**
- **Mahakam Delta (East Kalimantan)**
 - Closest city is Samarinda, population = 590 thousand people (2006)
 - River length = ± 980 , catchment size = km and 77,000 km², average annual precipitation = 2,500 mm
 - Water for domestic use and industries (shrimp ponds)
- **Threats: sedimentation and mangrove degradation, due to excessive exploitation**



Organizations involved

- **National level (for both Ciliwung and Mahakam deltas)**
 - Ministry of Public Works, Directorate of Water Resources
 - National Planning Agency, Directorate of Water Resource and Irrigation
 - Ministry of Environment, Deputy office of Environmental Conservation
- **Provincial / local level**
 - a. **Ciliwung**
 - Provincial Planning Agency of Jakarta
 - Spatial Planning Department of Jakarta
 - b. **Mahakam**
 - Provincial Planning Agency of East Kalimantan
 - Environmental Protection Agency of East Kalimantan



Delta Alliance Dutch Wing

Picture

Objectives and focus of Dutch Wing

- To facilitate knowledge exchange and development in the Dutch delta and across the other Delta Alliance deltas
- To build a ‘community of practise’ with all relevant stakeholders (‘joint learning environment’)

Through supportive activities:

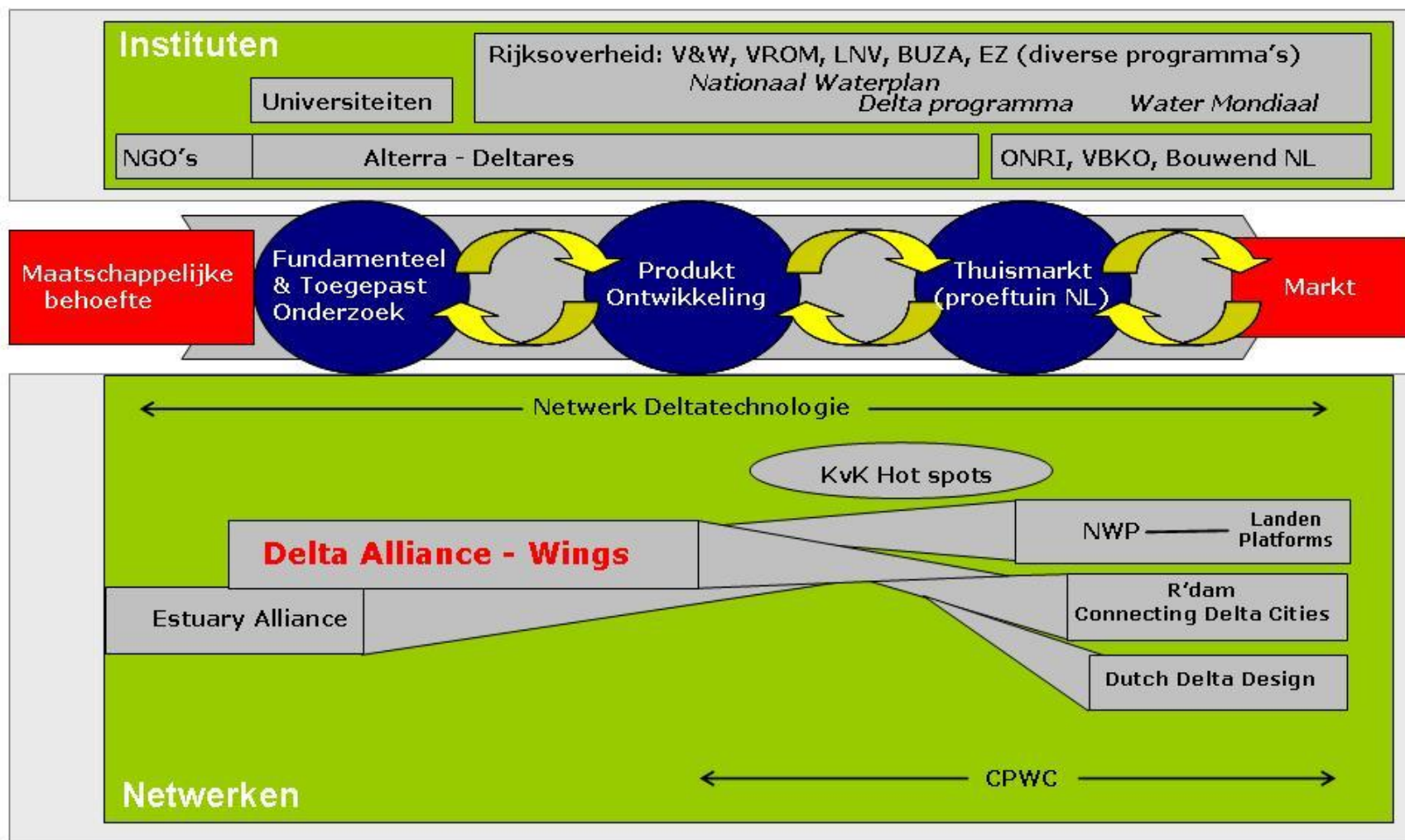
- Collaborative projects
- Events (preferable ‘joint’ events)
- Knowledge platform

Objectives and focus of Dutch Wing



1. Stimulate collaborative projects
 - Joint projects at national level
 - Joint projects at international level
 - Demonstration projects
2. Events
 - International conferences
 - Workshops, seminars
 - Study tours, courses
3. Web based Information services
 - Profile of Dutch delta
 - Overview of Dutch projects
 - Overview of Dutch research + gaps
 - Dutch Network member info

Objectives and focus of Dutch Wing



Objectives and outline of the Workshop

- Inform participants about Delta Alliance and Dutch Wing in relation to other initiatives
- Identify and prioritize critical Delta themes (EBR)
- Identify national and international collaboration potential on Delta themes (EBR)
- Identify Delta project opportunities (EBR)
- Discuss how to proceed towards and beyond the R'dam conference (organization, communication, activities)