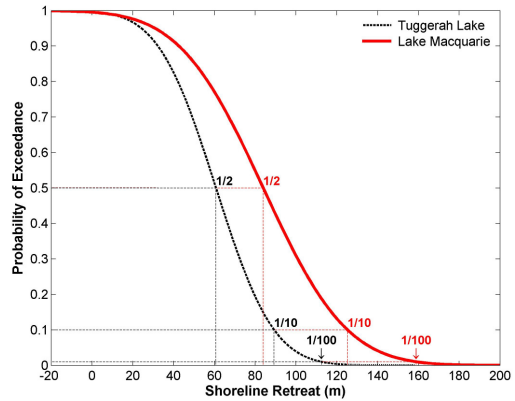
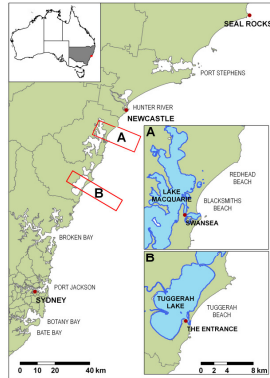


LOCAL GEOMORPHOLOGY AS A DETERMINING CONTROL OF COASTAL CLIMATE-CHANGE IMPACTS

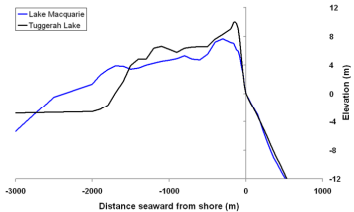


Effects of site geomorphology may outweigh any effects of regional variation in climate change forcing

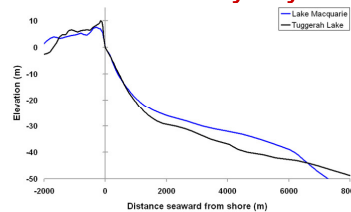
=

Individual site assessments of coastal vulnerability to climate change are imperative

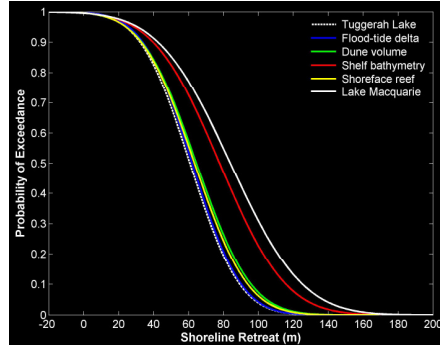
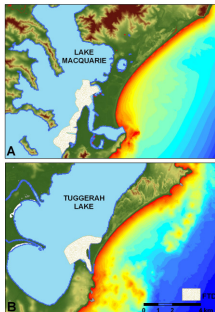
2. Dune Volume



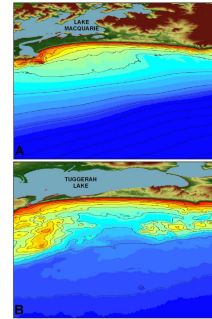
3. Inner-shelf Bathymetry



1. Flood-tide Delta



4. Shoreface Reefs



Shallow, broad **inner-shelf** and absence of **reef** in Lake Macquarie cell \Rightarrow $\frac{3}{4}$ of the difference in response between sites