

## One Integrated Regional Climate Strategy: *An Impossible Dream?*

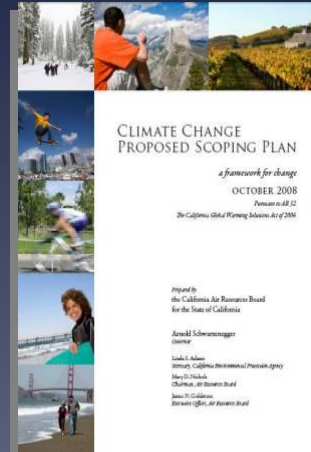


*Will Travis, Executive Director*  
San Francisco Bay Conservation and Development Commission

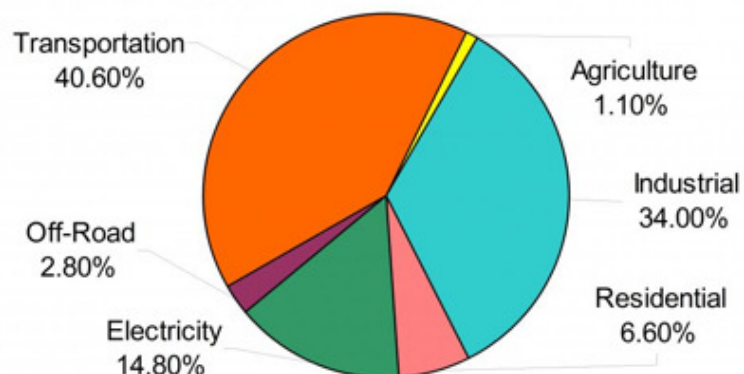


## California Statewide Climate Change Emissions Reduction Programs

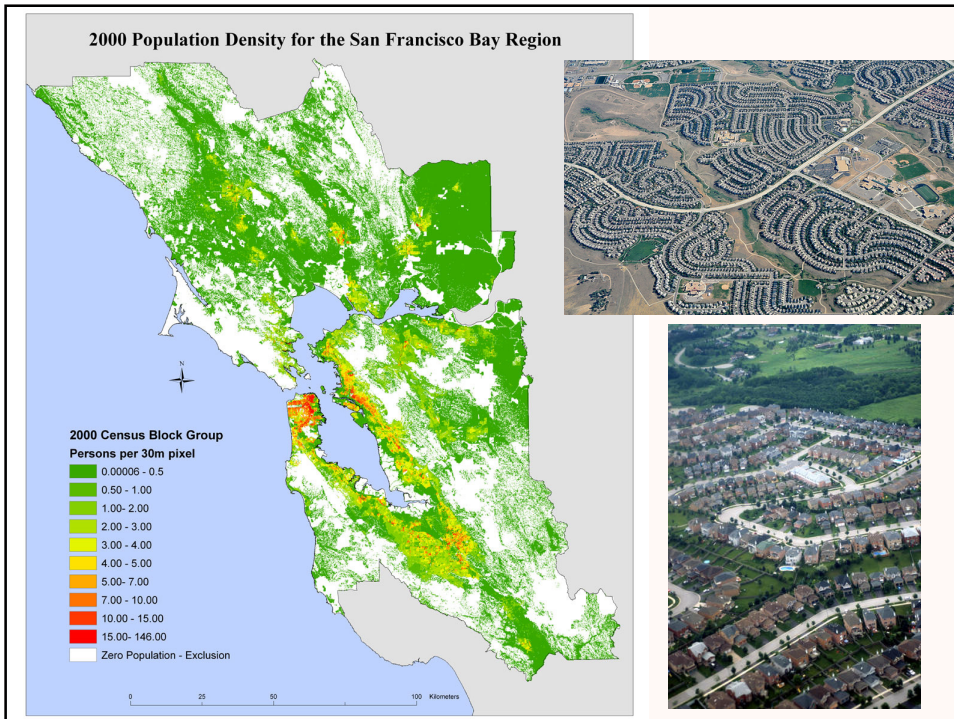
- \* **AB 1493 (2002) Pavley Bill**
  - \* Vehicles sold in California must emit 20% fewer GHGs by 2012 and 30% fewer by 2016
- \* **AB 32 (2006) Global Warming Solutions Act**
  - \* Reduce GHG emissions at least 20% by 2020
- \* **SB 375 (2008)**
  - \* Requires regional plans to address GHG emissions from land use and transportation



**SF Bay Area Greenhouse Gas Emissions  
By Source for 2007**



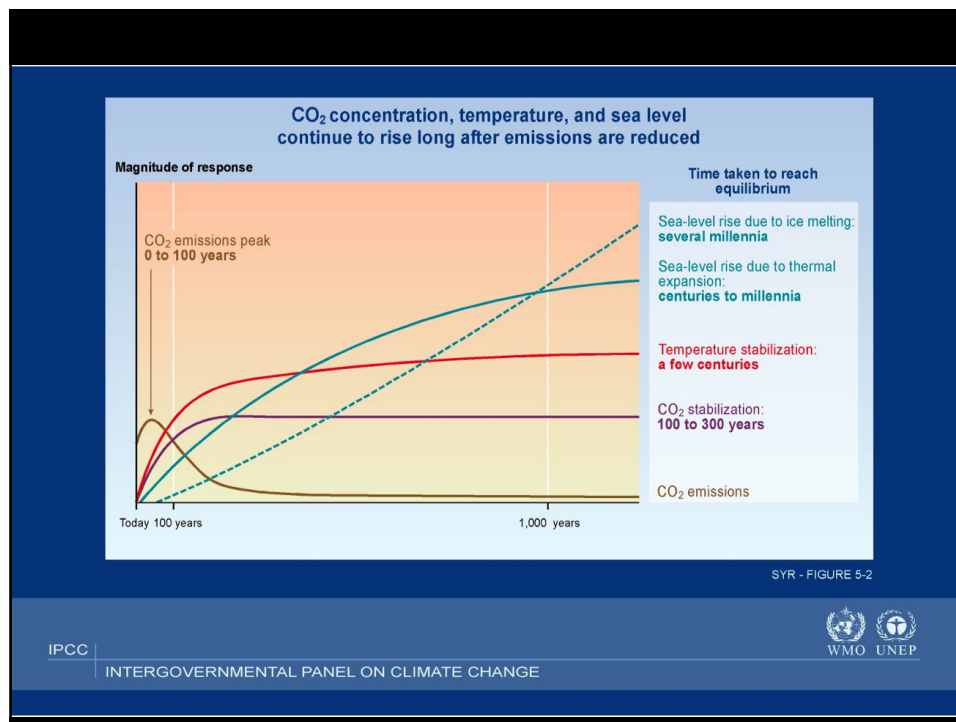








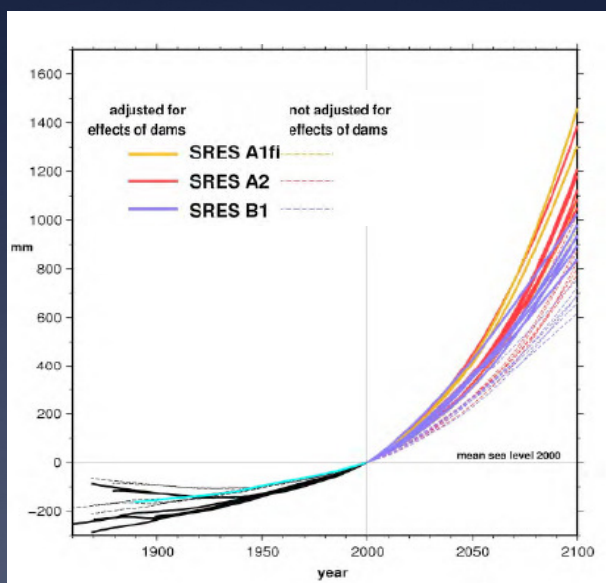




## Projected Sea Level Rise

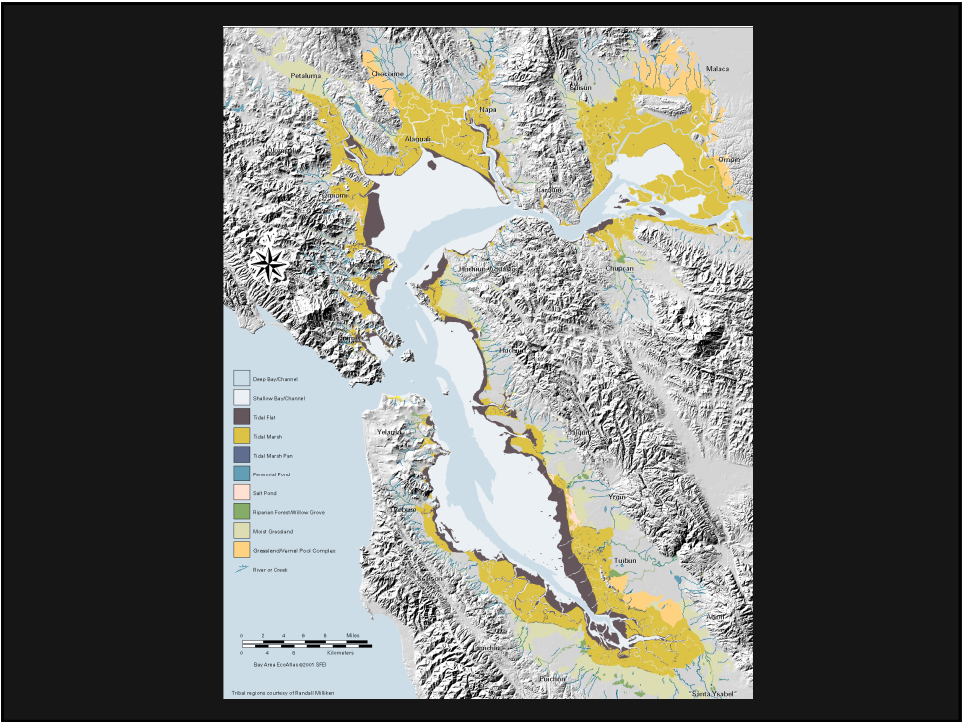
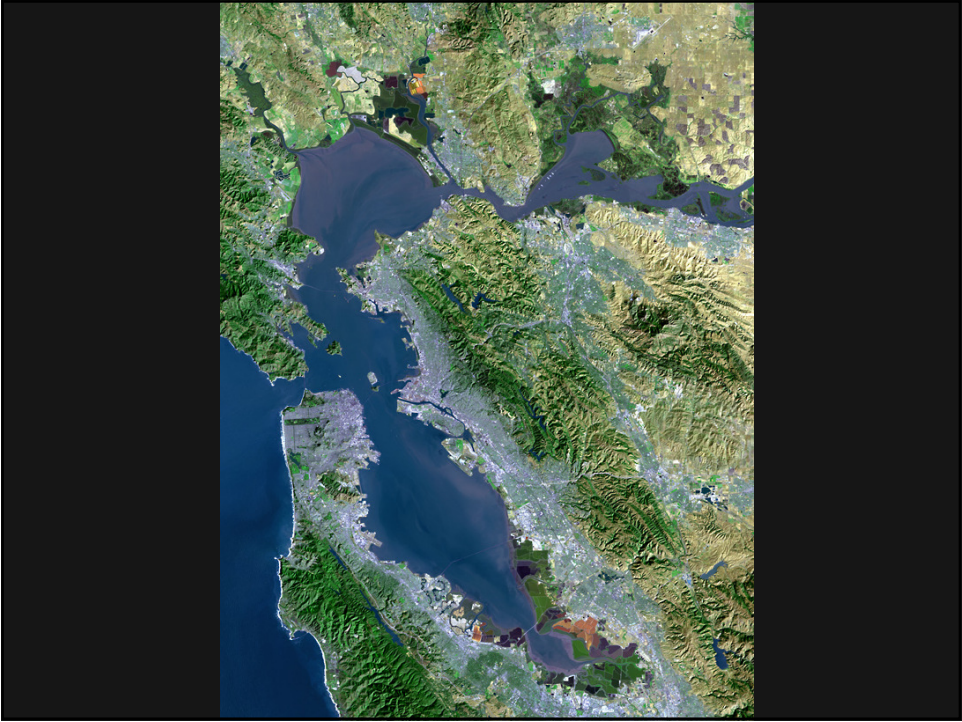
Three Emissions Scenarios:

- A1fi – High
- A2 – Medium High
- B1 – Low

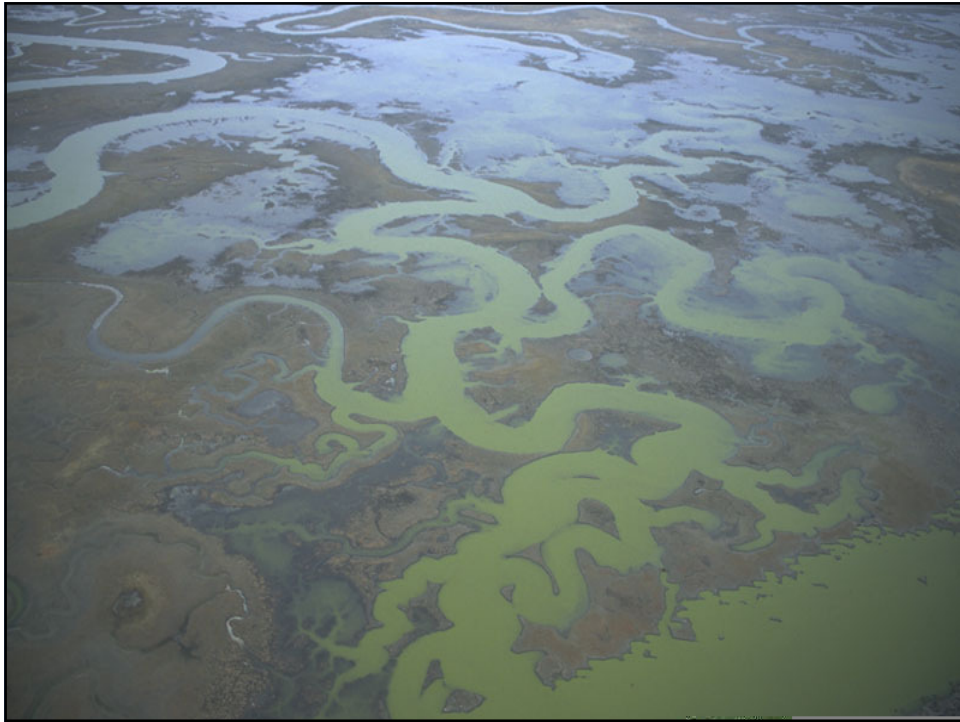


Source: California Climate Action Team Report 2009







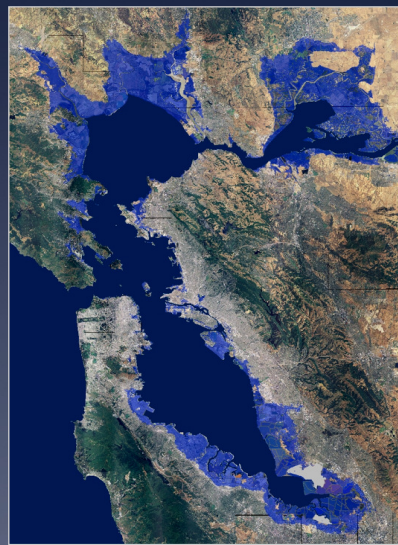




1849





2100

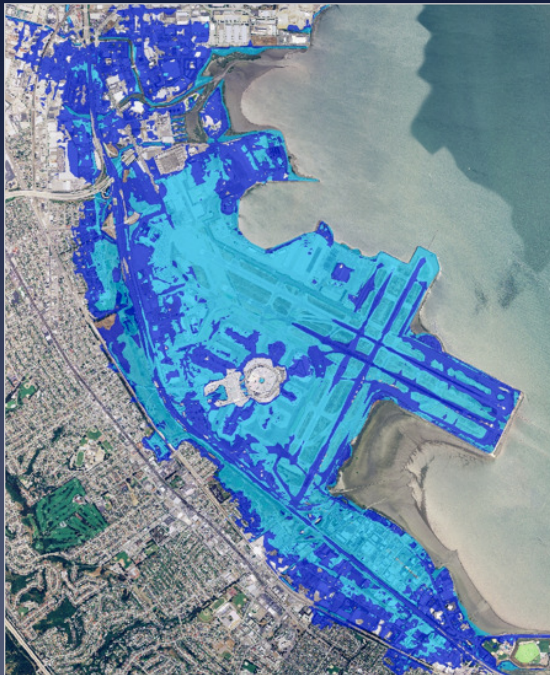








## San Francisco International Airport

 Sixteen Inch Sea Level Rise  
and  
 Fifty-five Inch Sea Level Rise





## Oakland International Airport

 Sixteen Inch Sea Level Rise  
and  
 Fifty-five Inch Sea Level Rise

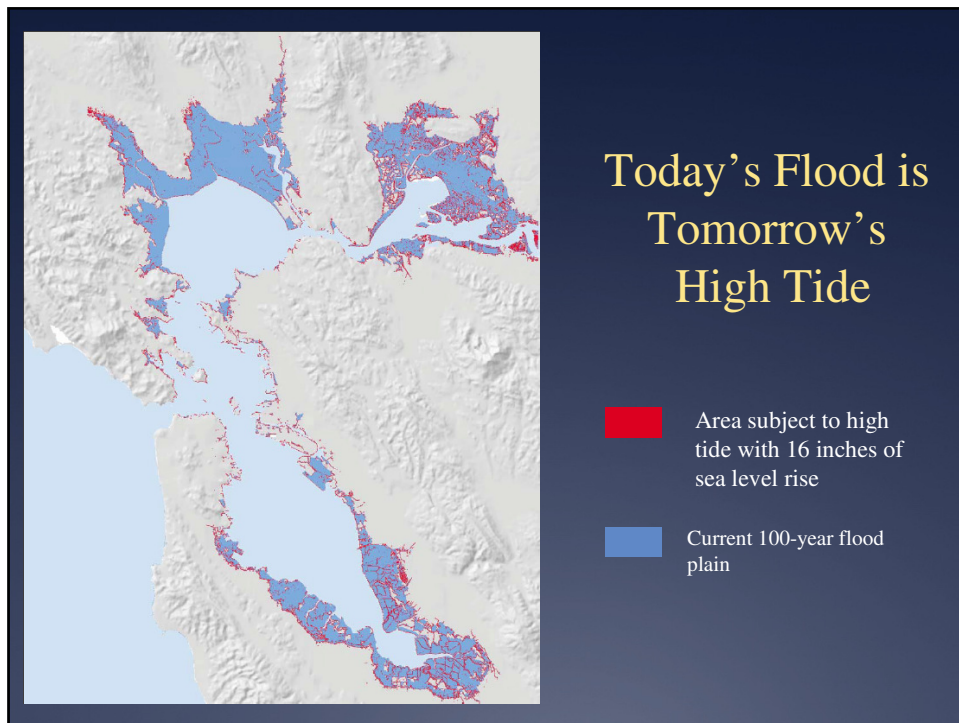


## Silicon Valley

 Sixteen Inch Sea Level Rise  
and  
 Fifty-five Inch Sea Level Rise







## Increased Storm Activity



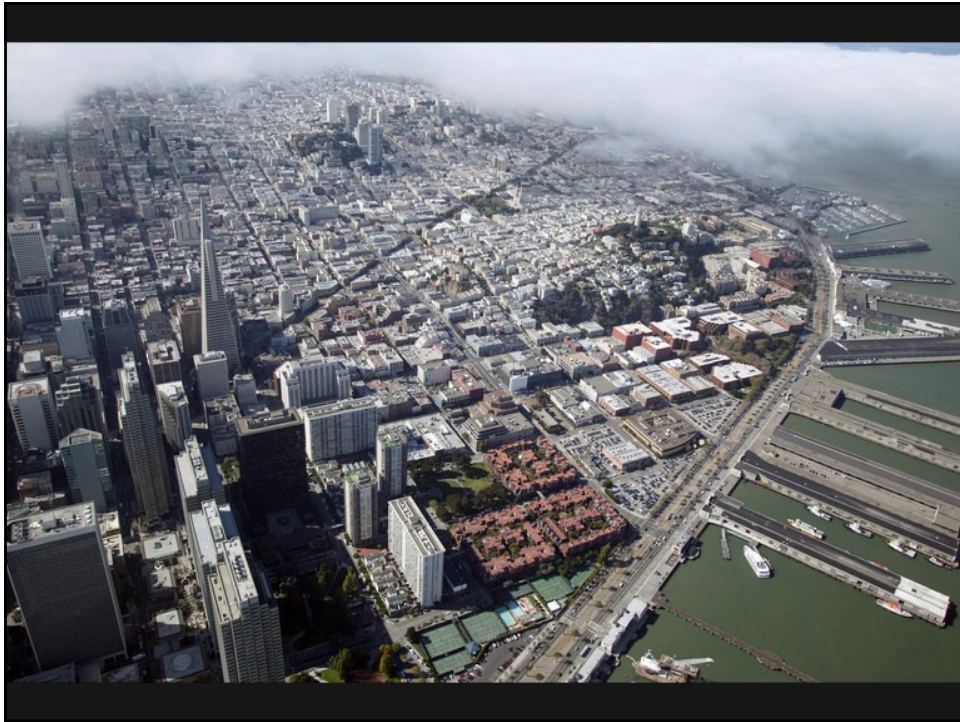
A 30 cm (11.8 inches) increase in sea level rise would shift the 100-year storm surge-induced flood event to once every 10 years.



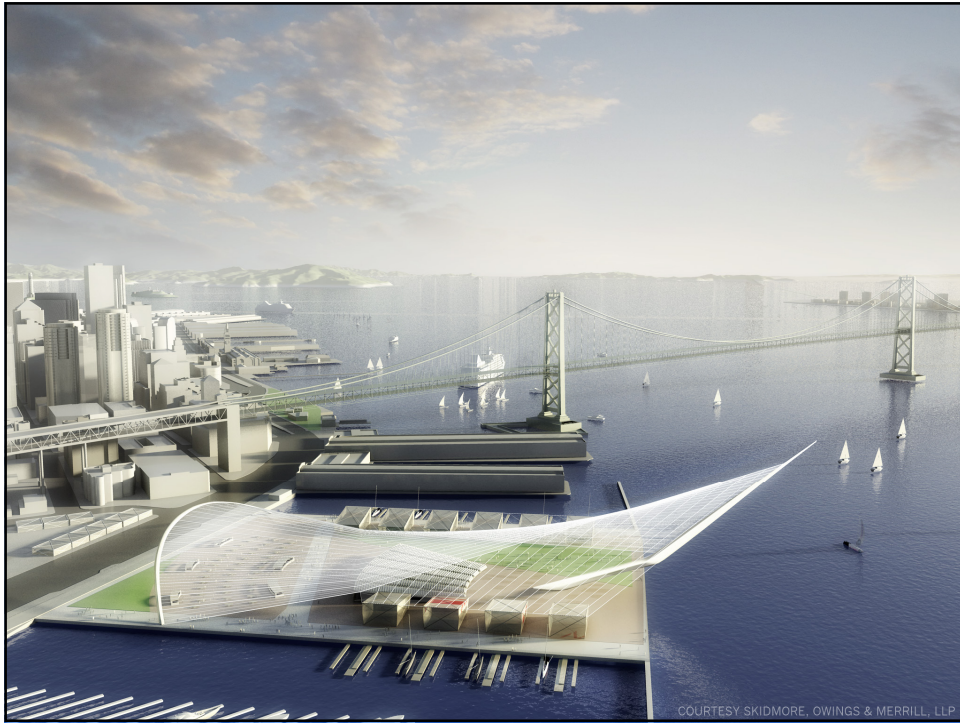
Oh what to to, what to dooo?













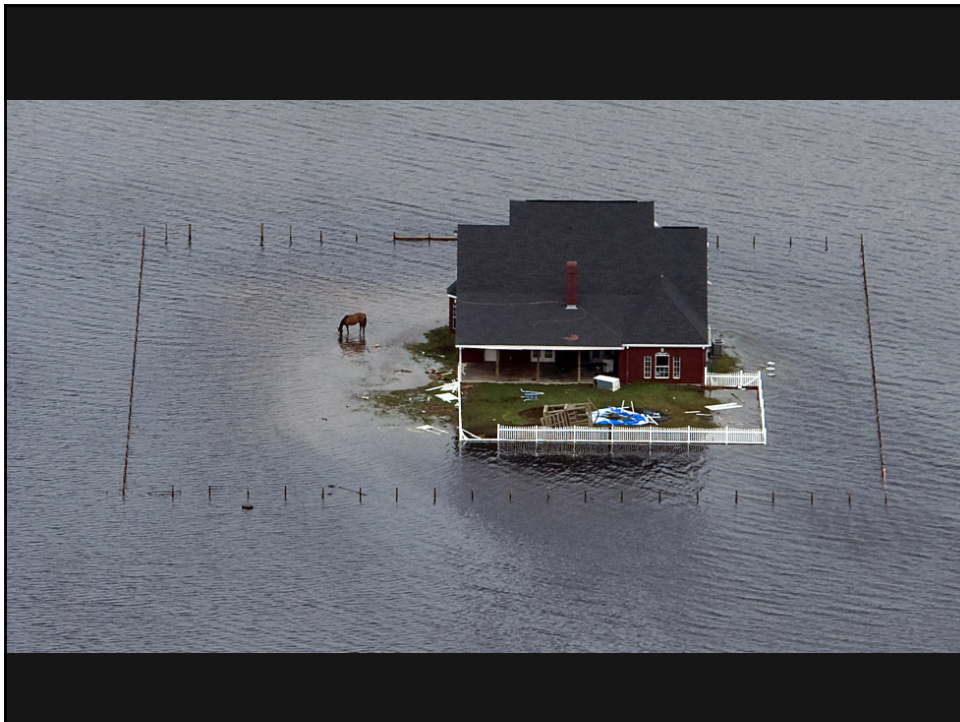
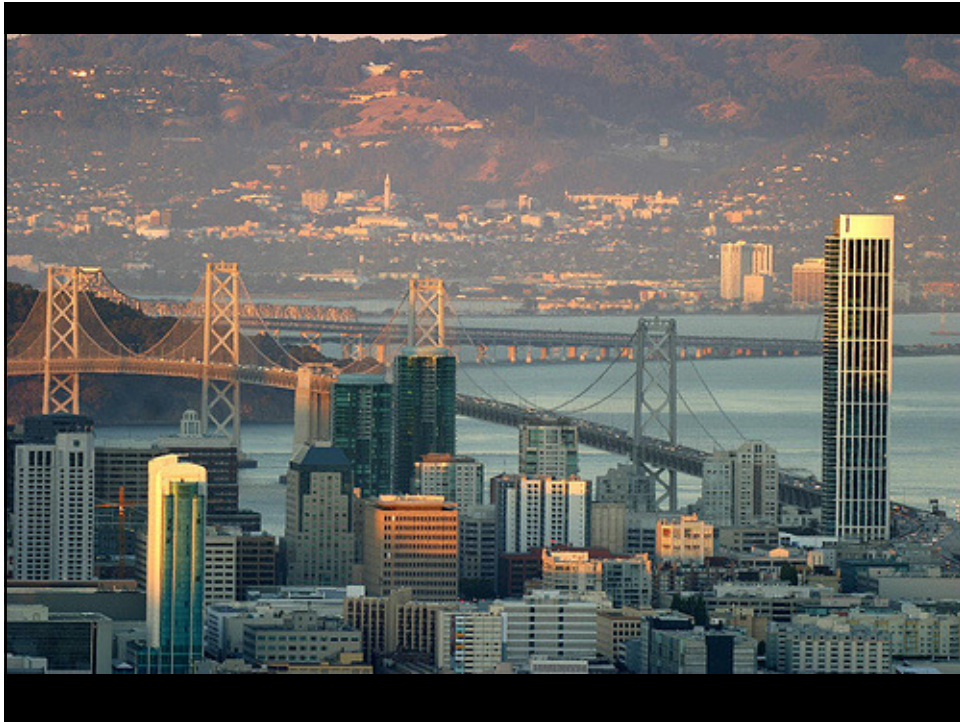










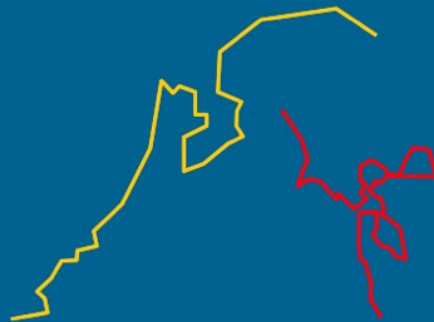








# San Francisco Bay: Preparing for the next level



21 September 2009

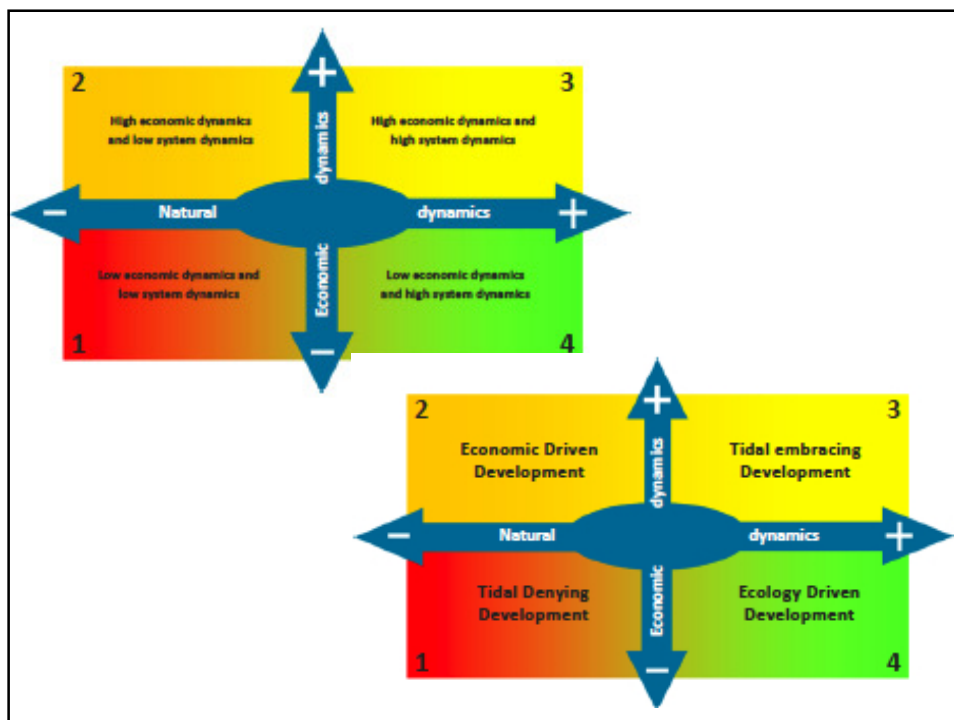


ARCADIS Deltares



ALTERA  
WAGeningen UR

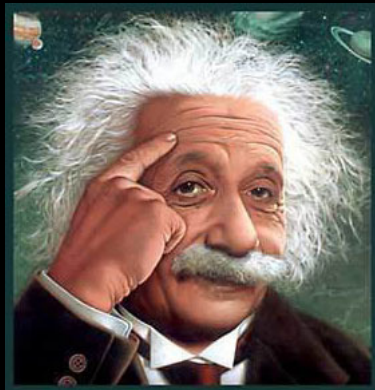
In collaboration  
with:





Insanity is doing the same thing over and over  
and expecting a different result.

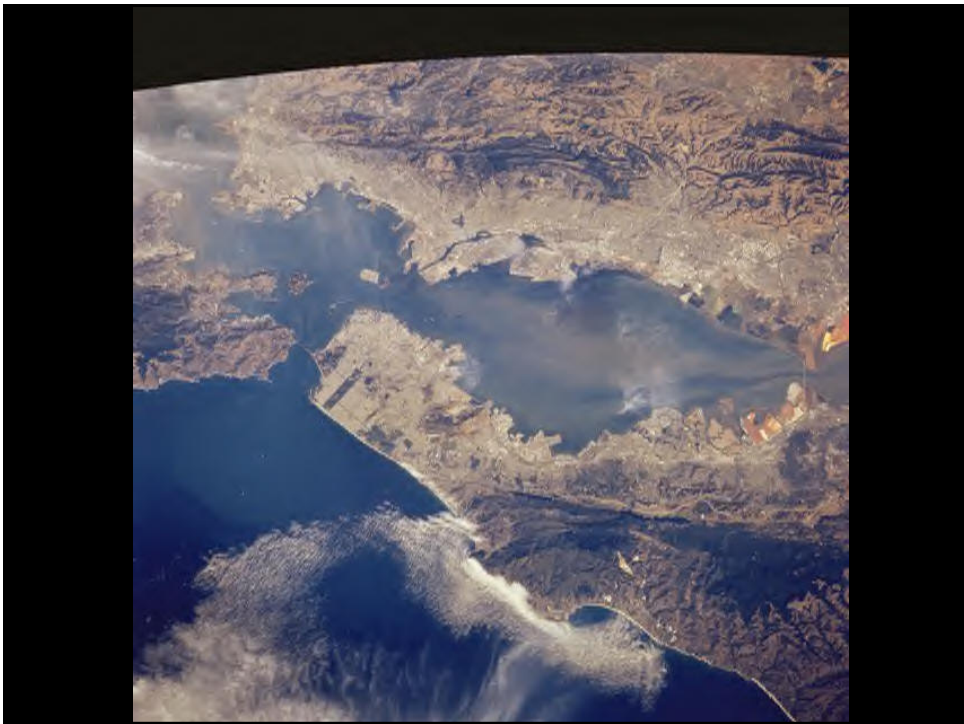
*Benjamin Franklin*



The world we have created today, as a result of our thinking thus far, has problems that cannot be solved by thinking the way we thought when we created them.

*Albert Einstein*





For every complex  
problem there is an  
answer that is clear,  
simple, and wrong.

*H.L. Mencken*



GOOD









**One Integrated Regional Climate Strategy:**  
*An Impossible Dream or a Realistic Goal?*



*Will Travis, Executive Director*  
San Francisco Bay Conservation and Development Commission