


EGYPT

Integration of Environment in Water Policies in The Nile Delta

MOHAMED BAYOUMI  
ENVIRONMENT TEAM LEADER  
UNDP EGYPT



NILE DELTA

THE NILE DELTA SHORELINE EXTENDS FOR 240 KM FROM ALEXANDRIA TO THE WEST TO PORT-SAID TO THE EAST AND HOSTS THE FOLLOWING:

- 50% OF THE EGYPTIAN POPULATION
- 40 % OF THE INDUSTRIAL CAPACITY
- MOST OF AGRICULTURAL AND FISH PRODUCTION
- HISTORICAL SITES
- UNIQUE ECOSYSTEMS



EGYPT'S SECOND NATIONAL COMMUNICATION (COVERED BY DR.  
IBRAHIM EL-SHINNAWY)

CONSERVATION OF MEDITERRANEAN WETLANDS

CONSERVATION OF MIGRATORY SOARING BIRDS

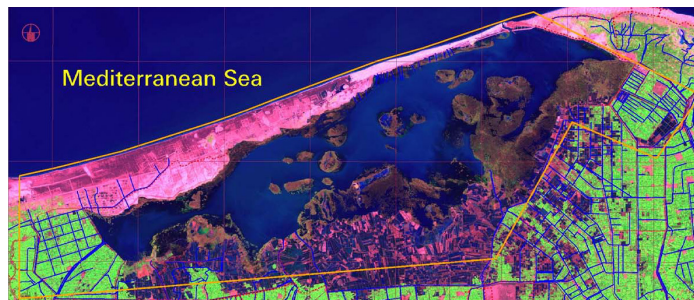
LAKE MANZALA ENGINEERED WETLANDS

INVESTIGATION OF RASHID REVETMENT

ADAPTATION OF NILE DELTA TO CLIMATE CHANGE

LAKE BURULUS

- DECLARED PROTECTED AREA IN 1998
- DECLARED AS RAMSAR SITE AS IT FALLS ON THE FLYWAY OF MIGRATORY BIRDS
- TOTAL AREA OF 70,000 HA
- SUPPORTS A COMMUNITY OF ABOUT 50,000 FISHERMEN AND THEIR FAMILIES
- FISH PRODUCTION IS ESTIMATED AT 50,000 TONNES/YEAR
- RECEIVES APPROX 3.9 BILLION M3/YEAR OF DRAINAGE WATER



## LAKE BURULUS



### INTERVENTIONS INCLUDE:

- PROJECT MANAGEMENT PLAN DEVELOPMENT AND IMPLEMENTATION
- ESTABLISHMENT OF LAKE PROJECT BOARD
- EMPOWERMENT OF LOCAL FISHERMEN COMMUNITY AND REMOVAL OF ILLEGAL FISH FARMS
- REDUCE POLLUTION LOAD TO THE LAKE
- TRAINING ON ALTERNATIVE INCOME GENERATION ACTIVITIES
- BETTER INTERNAL CIRCULATION OF WATER INSIDE THE LAKE



## LAKE MANZALA— UNDP INTERVENTIONS



- TOTAL AREA OF 90,000 HA
- SUPPORTS A COMMUNITY OF ABOUT 30,000 FISHERMEN AND THEIR FAMILIES
- FISH PRODUCTION IS ESTIMATED AT TONNES/YEAR
- RECEIVES APPROX 3.7 BILLION M<sup>3</sup>/YEAR OF DRAINAGE WATER



## LAKE MANZALA— UNDP INTERVENTIONS



UN  
DP



## LAKE MANZALA— UNDP INTERVENTIONS



UN  
DP



## RASHID REVETMENT – UNDP INTERVENTIONS



ROSETTA SEA REVETMENT  
LENGTH: 5 KM  
BUILT IN 1990  
PROTECT RASHID TOWN  
RUBBLE MOUND  
CONSTRUCTION WITH DOLOSSE  
ARMOR LAYER

EU/UNDP JOINT  
INVESTIGATION OF THE  
STABILITY OF THE RASHID  
REVETMENT TO VERIFY IMPACT  
OF CC ON THE SEA REVETMENT  
AND RECOMMEND CORRECTIVE  
MEASURES



## ADAPTATION OF NILE DELTA TO CC – UNDP INTERVENTIONS



THE PROJECT OBJECTIVE IS TO INTEGRATE THE MANAGEMENT OF SLR RISKS INTO THE DEVELOPMENT OF EGYPT'S LOW ELEVATION COASTAL ZONE (LECZ) IN THE NILE DELTA THROUGH THE FOLLOWING:

- ENHANCED CAPACITY TO IMPROVE RESILIENCE OF COASTAL SETTLEMENTS AND DEVELOPMENT INFRASTRUCTURE IS STRENGTHENED
- INNOVATIVE AND ENVIRONMENTALLY-FRIENDLY COASTAL ZONE ADAPTATION MEASURES ENFORCED IN THE FRAMEWORK OF NILE DELTA ICZM



## RECOMMENDATIONS



### FURTHER ACTION

- DEVELOP AN INTEGRATED COASTAL ZONE MANAGEMENT PLAN FOR THE NILE DELTA COAST
  - REVISE MANDATE OF DIFFERENT INSTITUTIONS CONCERNED WITH COASTAL ZONE
  - ENFORCE INTEGRATED COASTAL ZONE MANAGEMENT PLANNING AND INSTITUTIONALIZE APPROVAL OF COASTAL ZONE INTERVENTIONS THROUGH A NATIONAL COMMITTEE INCLUDING ALL PARTNERS
  - INVESTIGATE AND TEST INNOVATIVE TECHNIQUES FOR COASTAL ZONE PROTECTION

### EXCHANGE OF KNOWLEDGE:

- REVIEW BEST PRACTICES AND UPSCALE SUCCESSFUL INITIATIVES
- DETERMINE THE MAXIMUM SEA DEFENSE CAPACITY OF NATURAL ECOSYSTEMS AND MANMADE STRUCTURES IN THE NILE DELTA IN RESISTING EXPECTED SEA LEVEL RISE