



Copenhagen Cloudburst Mangement Plan

Jan Rasmussen, City of Copenhagen





2. september 2014

SHARING
COPENHAGEN 2014

1

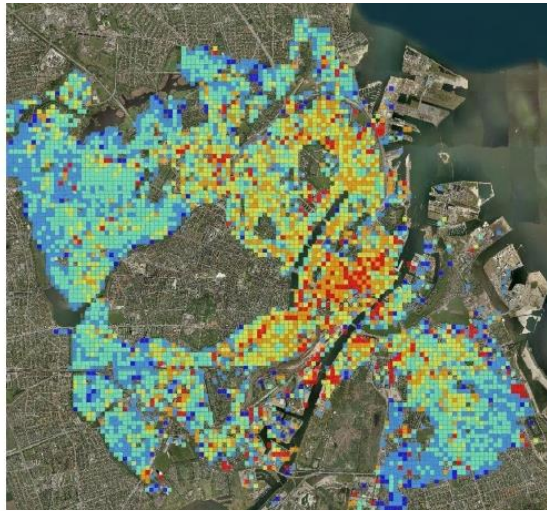
CLIMATE ADAPTATION PLAN - AND CLOUDBURST MANAGEMENT PLAN





SHARING
COPENHAGEN 2014

RISK MAP



2. september 2014

SHARING
COPENHAGEN 2014

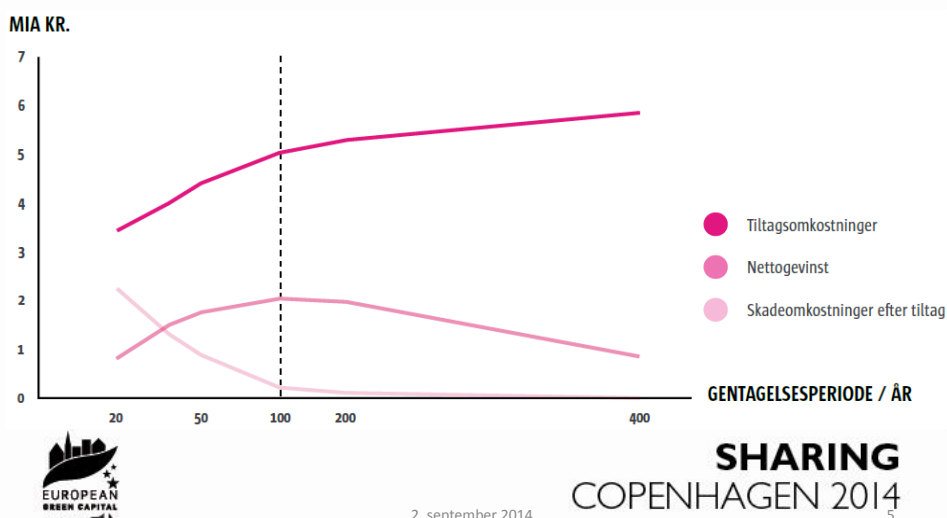
3

The game changer - July 2nd 2011

- High political attention (nationally and local)
- Fast implementation
- Cloudburst Management Plan - new service level - planning for 100 year event
- Change in legislation - new finance mechanisms to enable surface solutions



DECISION OF SAFETY LEVEL

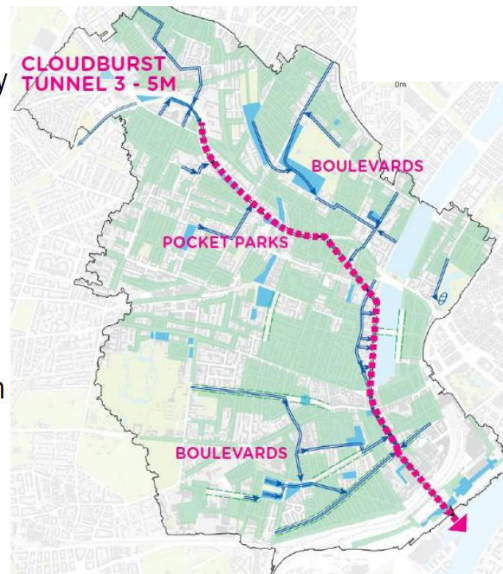


7 WATER CATCHMENT PLANS



Detailed analysis of watersheds

- Topography
- The built up structure of the city
- Where does it run?
- Problem areas
- How much water - combining extreme rainfall with disconnecting measures
- Possible solutions - including connection with blue and green structure



THE PROJECTS

- Breaking down of the 7 water catchment areas into projects (only of the main structures – the backbone of the new storm water management infrastructure)
- About 300 different projects
- All have been described, technical and economic



**SHARING
COPENHAGEN 2014**

INVESTMENT STATEMENT - SOCIO-ECONOMIC DATA

- Cost of investments
- Value of estimated damages
- Value of "green solutions"
- Saved investments in expanding the present sewer system
- Other aspects



SHARING
COPENHAGEN 2014

Thank you for your attention



Jan Rasmussen
City of Copenhagen
jrasmu@tmf.kk.dk

