

# Smart Logistics in Horticulture

Joint Stakeholder Meeting of the Horticultural Trials in the Flspace pro.  
6 June 2013, LogiXperience in Venlo, The Netherlands



## Plants & Flowers Trial



### *Quality Controlled Logistics in the Floricultural Supply Chain*



Smart Logistics in Horticulture  
Joint Stakeholder Meeting  
LogiXperience, Venlo, The Netherlands  
6 June 2013

Robbert Robbemon, Cor Verdouw



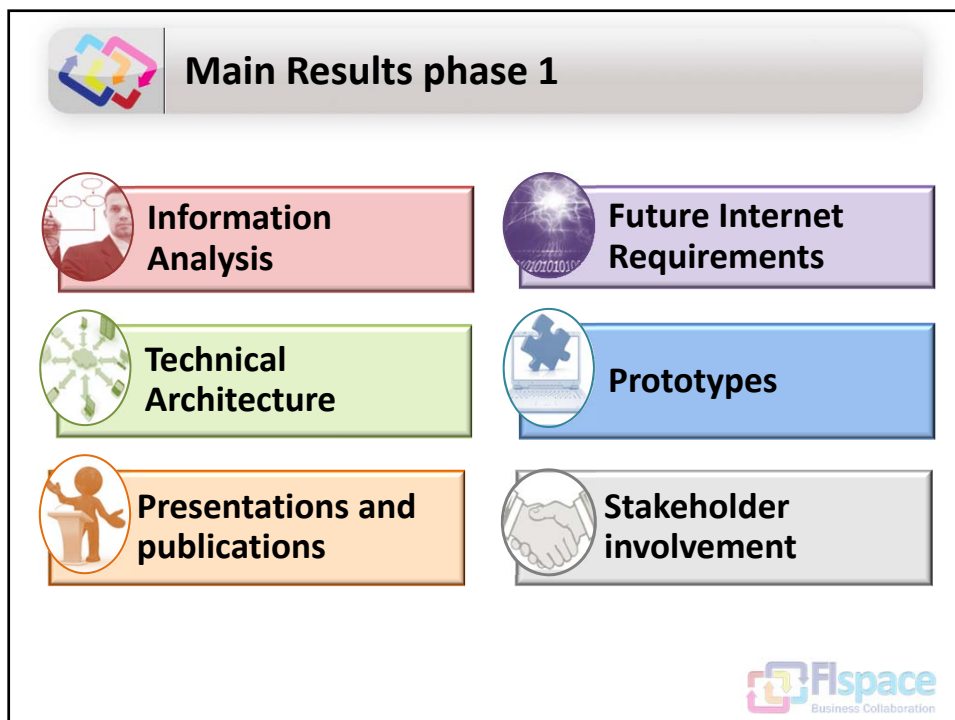
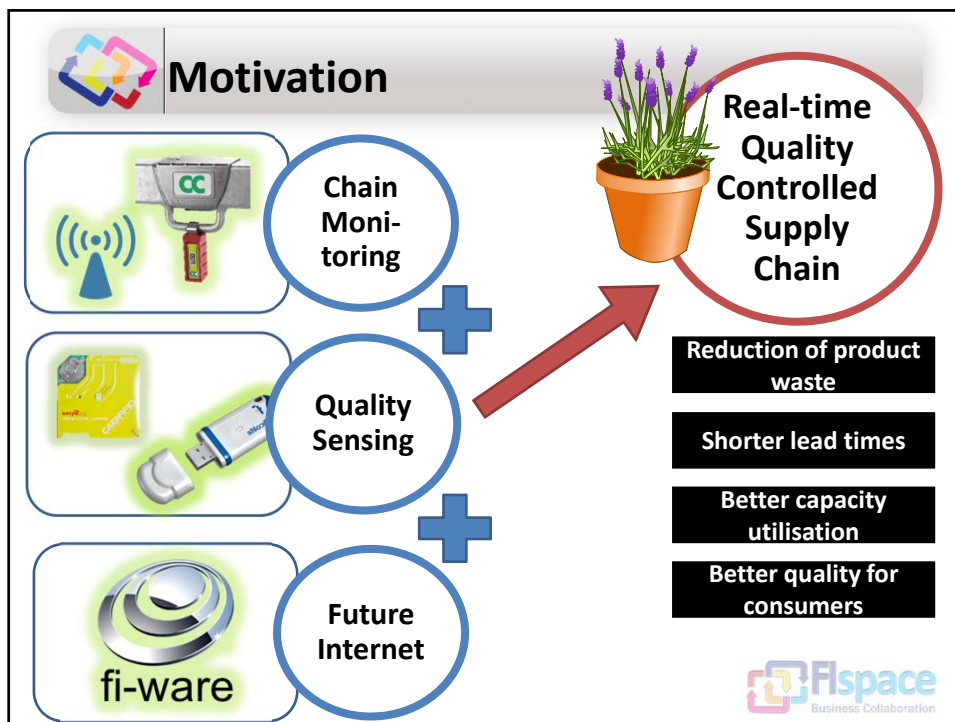
## Contents

- Motivation
- Main results phase I
- Plans phase II
- Discussion

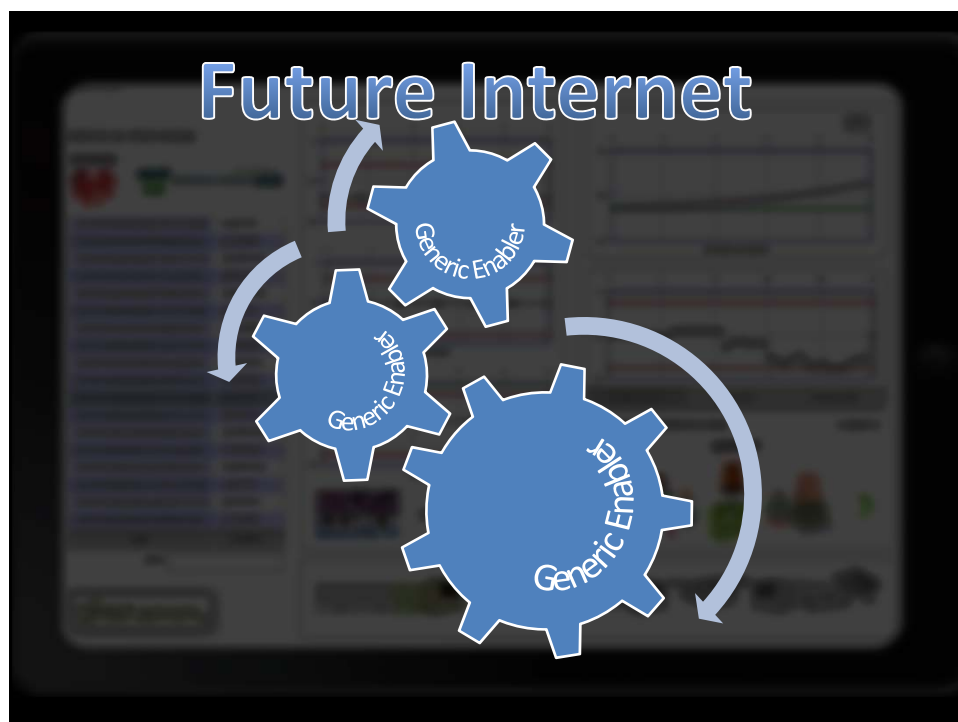


# Smart Logistics in Horticulture

Joint Stakeholder Meeting of the Horticultural Trials in the Flspace pro.  
6 June 2013, LogiXperience in Venlo, The Netherlands



***Joint Stakeholder Meeting of the Horticultural Trials in the Flspace pro  
6 June 2013, LogiXperience in Venlo, The Netherlands***



# Smart Logistics in Horticulture

Joint Stakeholder Meeting of the Horticultural Trials in the Flspace pro.  
6 June 2013, LogiXperience in Venlo, The Netherlands





## Target improvements from stakeholder evaluation





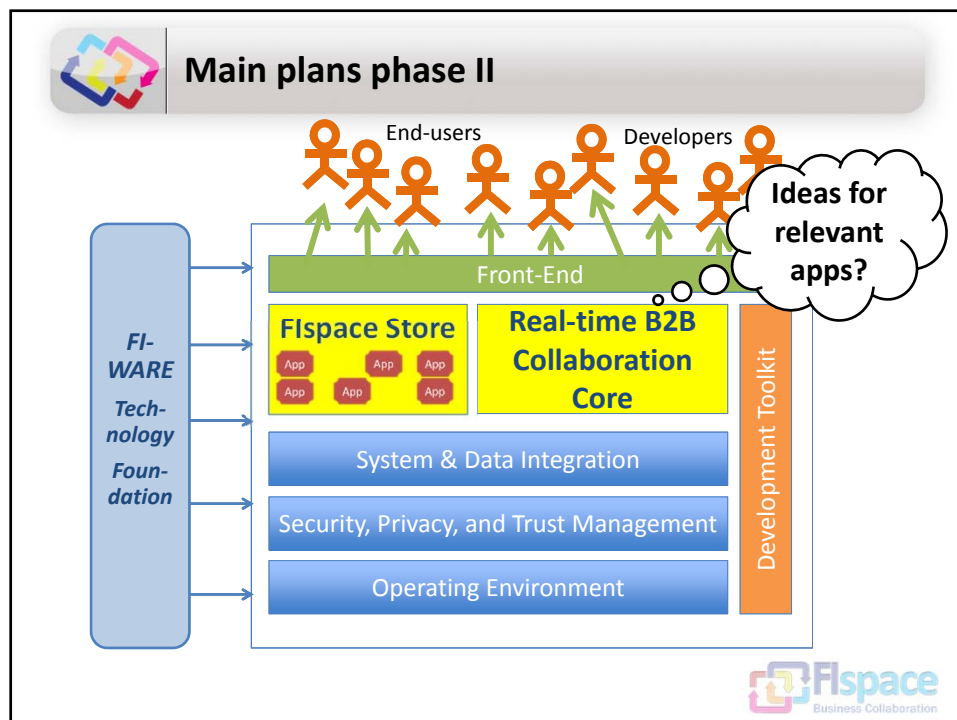
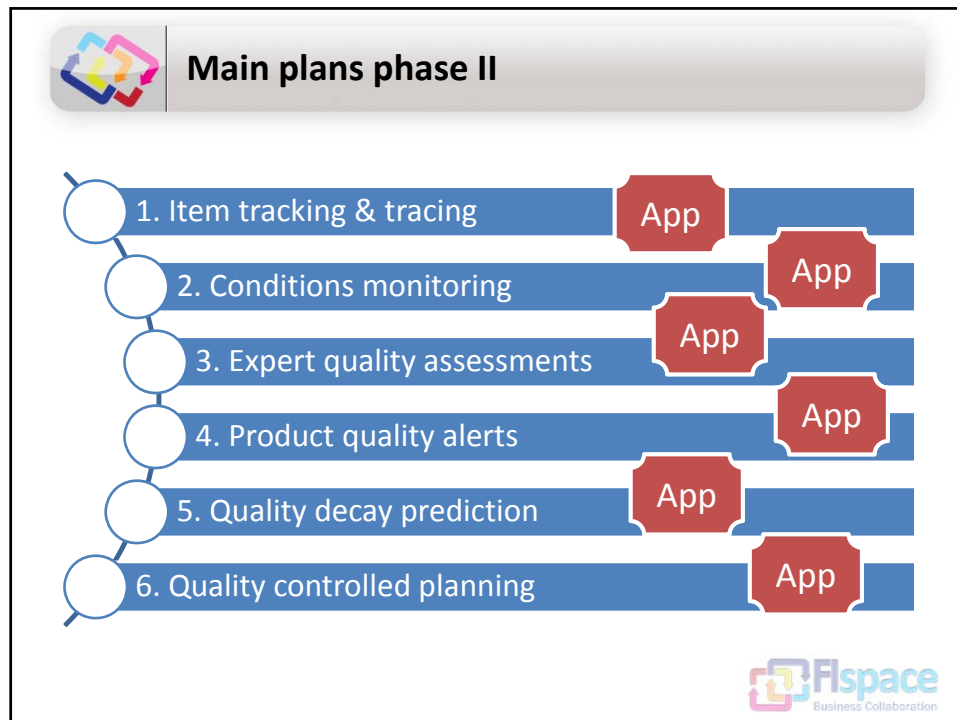






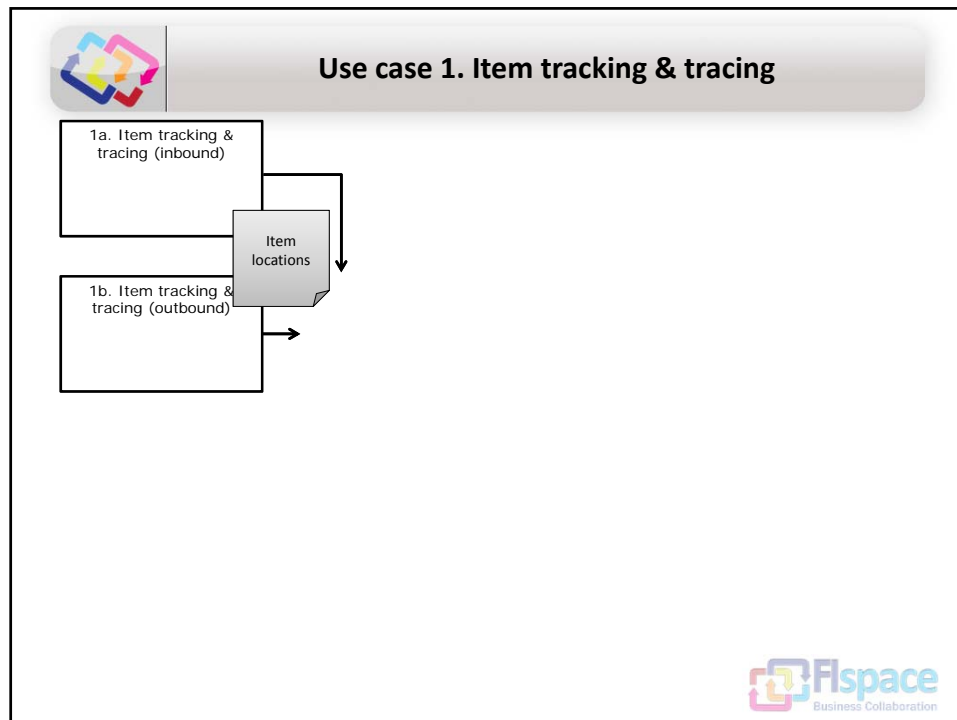
# Smart Logistics in Horticulture

Joint Stakeholder Meeting of the Horticultural Trials in the Flspace pro.  
6 June 2013, LogiXperience in Venlo, The Netherlands



# Smart Logistics in Horticulture

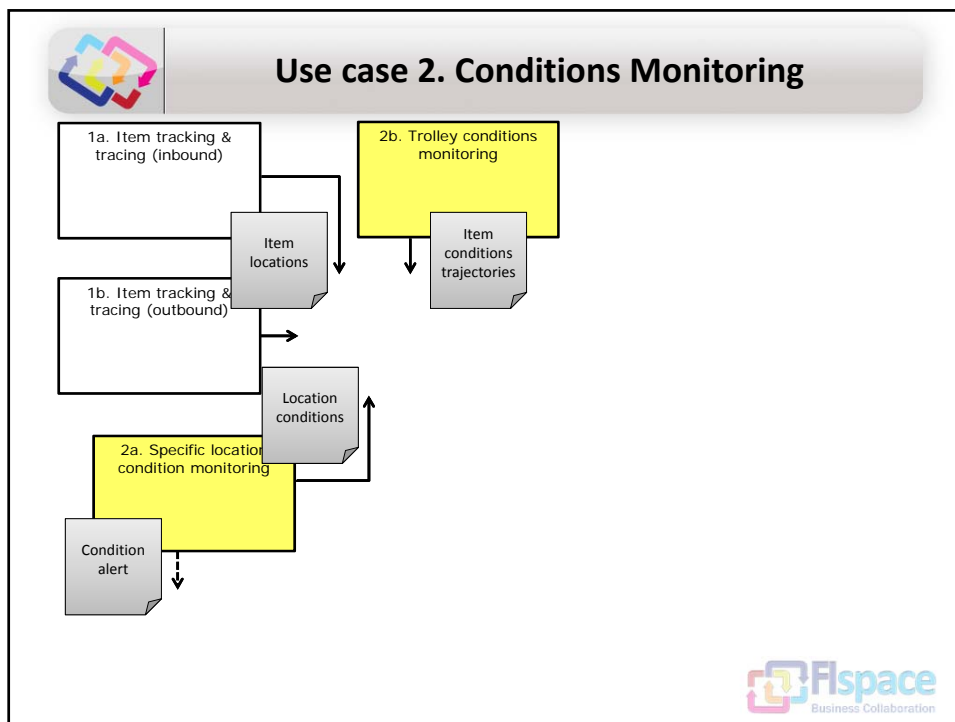
Joint Stakeholder Meeting of the Horticultural Trials in the Flspace pro.  
6 June 2013, LogiXperience in Venlo, The Netherlands





# Smart Logistics in Horticulture

Joint Stakeholder Meeting of the Horticultural Trials in the Flspace pro.  
6 June 2013, LogiXperience in Venlo, The Netherlands



**Use case 2. Conditions Monitoring**

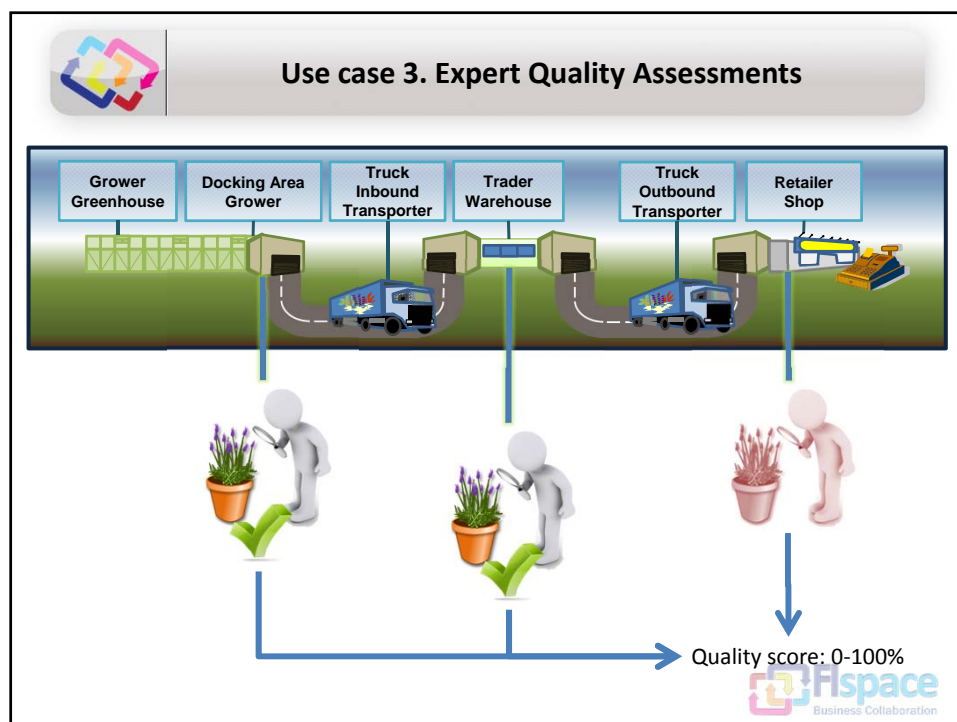
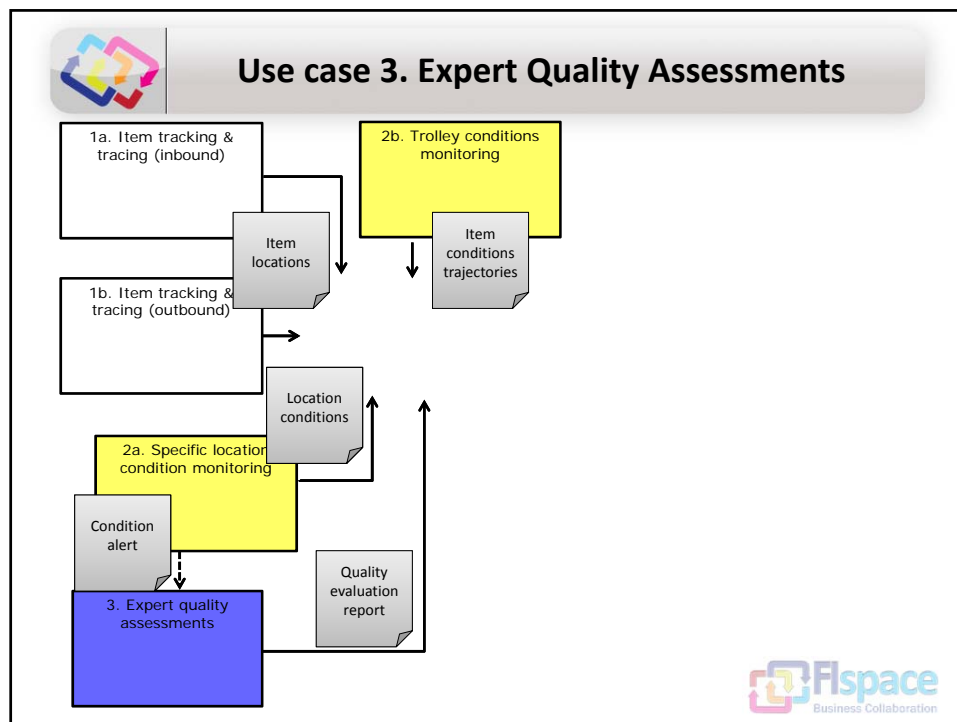
The screenshot shows the Flspace application interface. At the top, it displays the company name 'Speksnijder B.V.' and the location GLN: 1100002405859. Below this, there are three graphs showing environmental parameter values: Temperature (25°C), Humidity (88%), and Luminance (18,000 lux). A red box highlights the Luminance graph, which has a warning icon. Below the graphs is a table with shipment data.

Shipment	Cultivar	From	To	Amount (trolley * flats/shelf * plants/flats)	Quality (A - B - C - D)	Storage conditions
00H20120 802011	Lavendula			3*5*6	A	Suboptimal
VSP20120 802052	Buxus			2*0*12	B	Suboptimal
SPS20120 802003	Orchid			1*8*4	A	Optimal

- Overview of environmental conditions
- Overview of products at location
- Suitability of conditions for cultivars at location
- Alarms for problem notification

# Smart Logistics in Horticulture

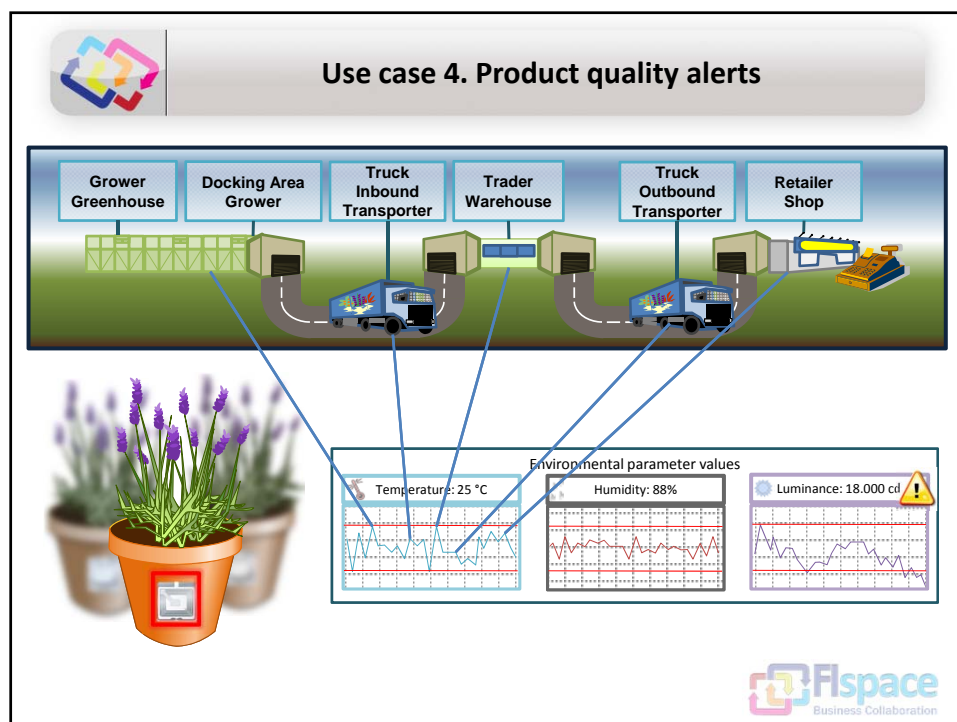
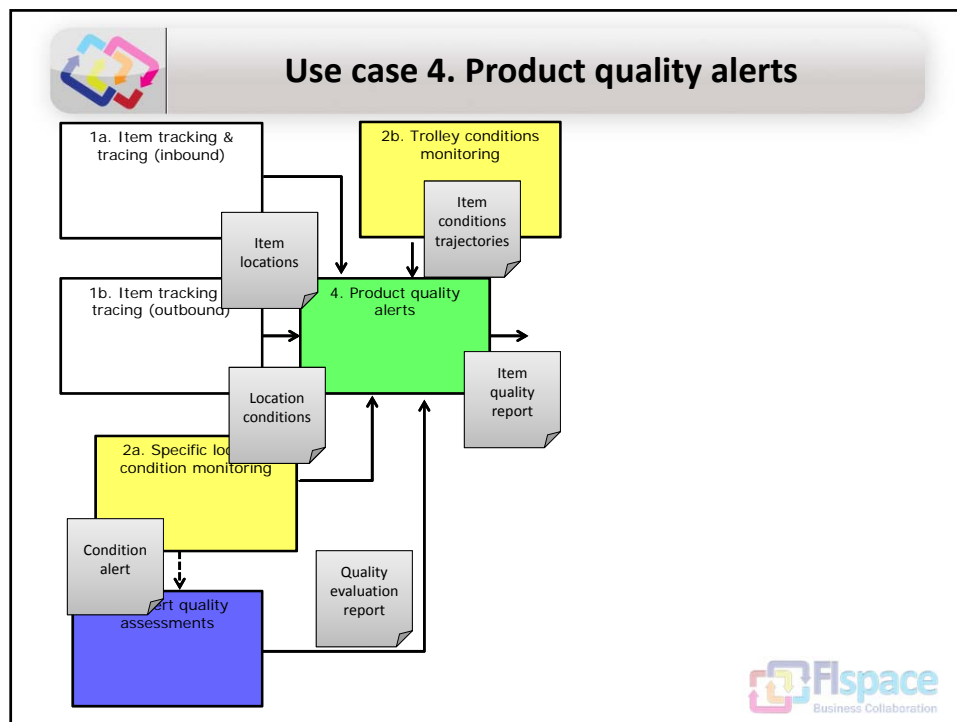
Joint Stakeholder Meeting of the Horticultural Trials in the Flspace pro.  
6 June 2013, LogiXperience in Venlo, The Netherlands





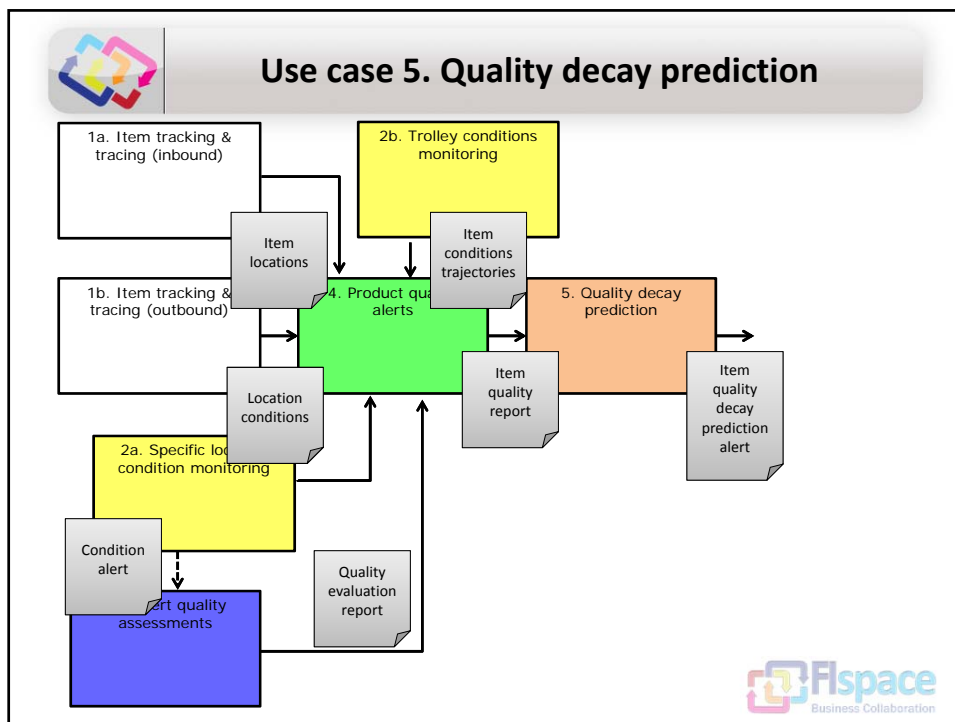
# Smart Logistics in Horticulture

Joint Stakeholder Meeting of the Horticultural Trials in the Flspace pro.  
6 June 2013, LogiXperience in Venlo, The Netherlands



# Smart Logistics in Horticulture

Joint Stakeholder Meeting of the Horticultural Trials in the Flspace pro.  
6 June 2013, LogiXperience in Venlo, The Netherlands



**Use case 5. Quality decay prediction**

Quality Score  
Plant ID: 33557211  
Second Choice

Historic data | Projection data

Tick box for product life improvement measures

Max Quality Projection  
Min Quality Projection  
Trend Line Data  
Quality Measurement

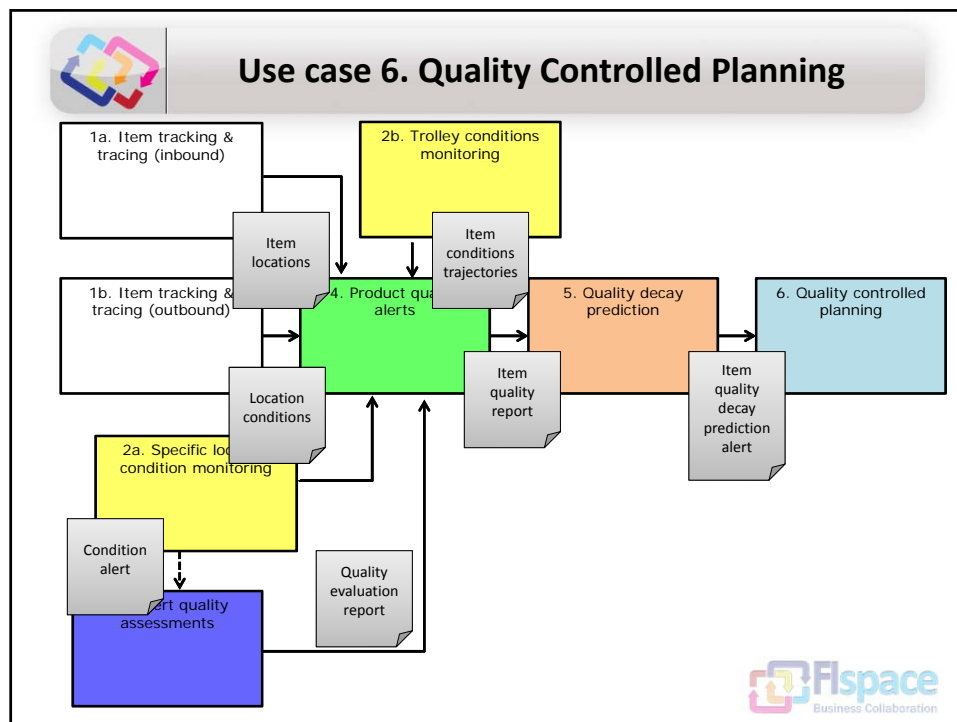
Alert: Min Quality Projection expected to drop below quality norms within 8 days

- Historic quality decay trajectory based on measurements
- Simulated quality decay projections based on quality development models
- Alarms for expected quality issues
- Advises for interventions

The screenshot shows a tablet interface for 'Quality Score'. It displays a plant ID (33557211) and a 'Second Choice' label. There are sections for 'Historic data' (showing potted plants) and 'Projection data' (showing a line graph with a downward trend and a warning icon). A legend indicates 'Max Quality Projection' (dashed red line), 'Min Quality Projection' (dashed blue line), 'Trend Line Data' (solid black line), and 'Quality Measurement' (black dots). An alert box states: 'Alert: Min Quality Projection expected to drop below quality norms within 8 days'. A tick box for 'product life improvement measures' is also visible. A Flspace Business Collaboration logo is in the bottom right.

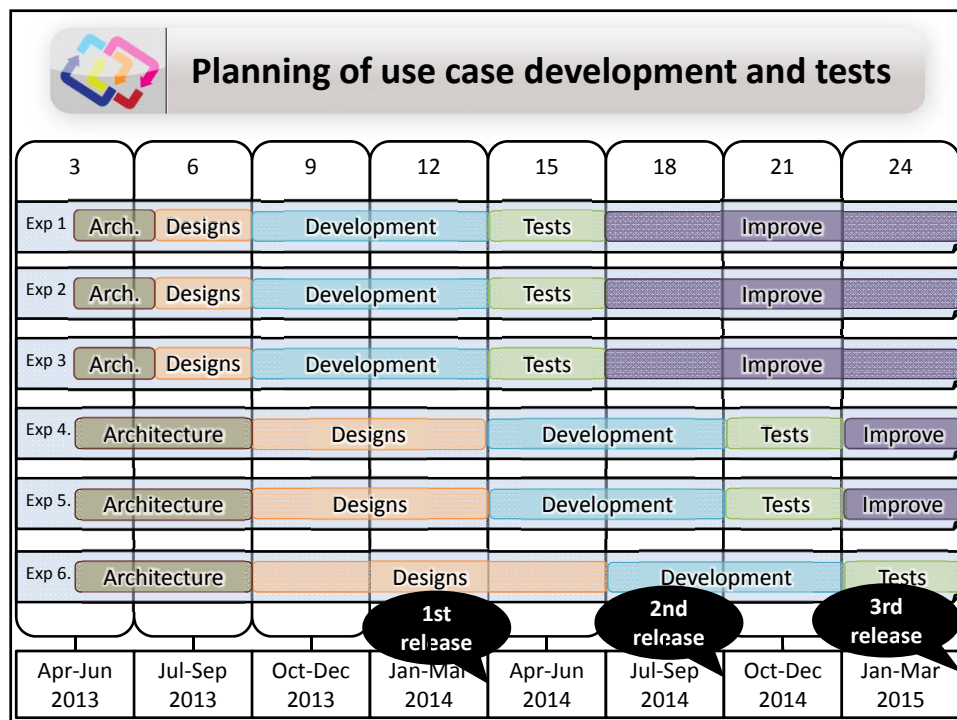
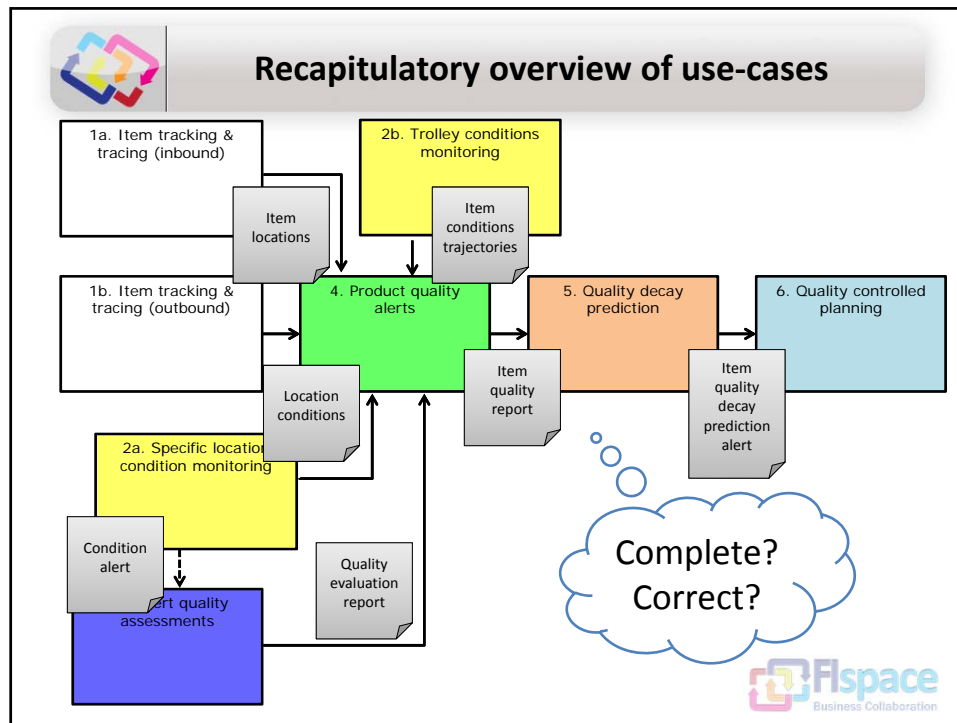
# Smart Logistics in Horticulture

Joint Stakeholder Meeting of the Horticultural Trials in the Flspace pro.  
6 June 2013, LogiXperience in Venlo, The Netherlands



# Smart Logistics in Horticulture

Joint Stakeholder Meeting of the Horticultural Trials in the Flspace pro.  
6 June 2013, LogiXperience in Venlo, The Netherlands



# Smart Logistics in Horticulture

*Joint Stakeholder Meeting of the Horticultural Trials in the Flspace pro.  
6 June 2013, LogiXperience in Venlo, The Netherlands*

A large, stylized graphic of four interlocking arrows in red, blue, yellow, and orange, arranged in a square pattern. The arrows are 3D and have a slight shadow.

**Thank you for your attention!**

The logo for Flspace Business Collaboration, featuring the same stylized arrow icon as above, followed by the text "Flspace" in blue and "Business Collaboration" in a smaller blue font below it.

**Robbert Robbemonnd, Cor Verdouw**  
LEI Wageningen UR, The Netherlands  
robbert.robbemonnd@wur.nl  
cor.verdouw@wur.nl

[www.Flspace.eu](http://www.Flspace.eu)