

The DESIRE Project: Desertification Mitigation and Remediation of Land *a Global Approach for Local Solutions*



Simone Verzandvoort, Erik van den Elsen, Rudi Hessel, and Coen Ritsema (Alterra-WUR), on behalf of the DESIRE consortium



ALTERRA
WAGENINGEN UR

CRIC 9, Bonn – EC side event – 21 Feb 2011



Objectives



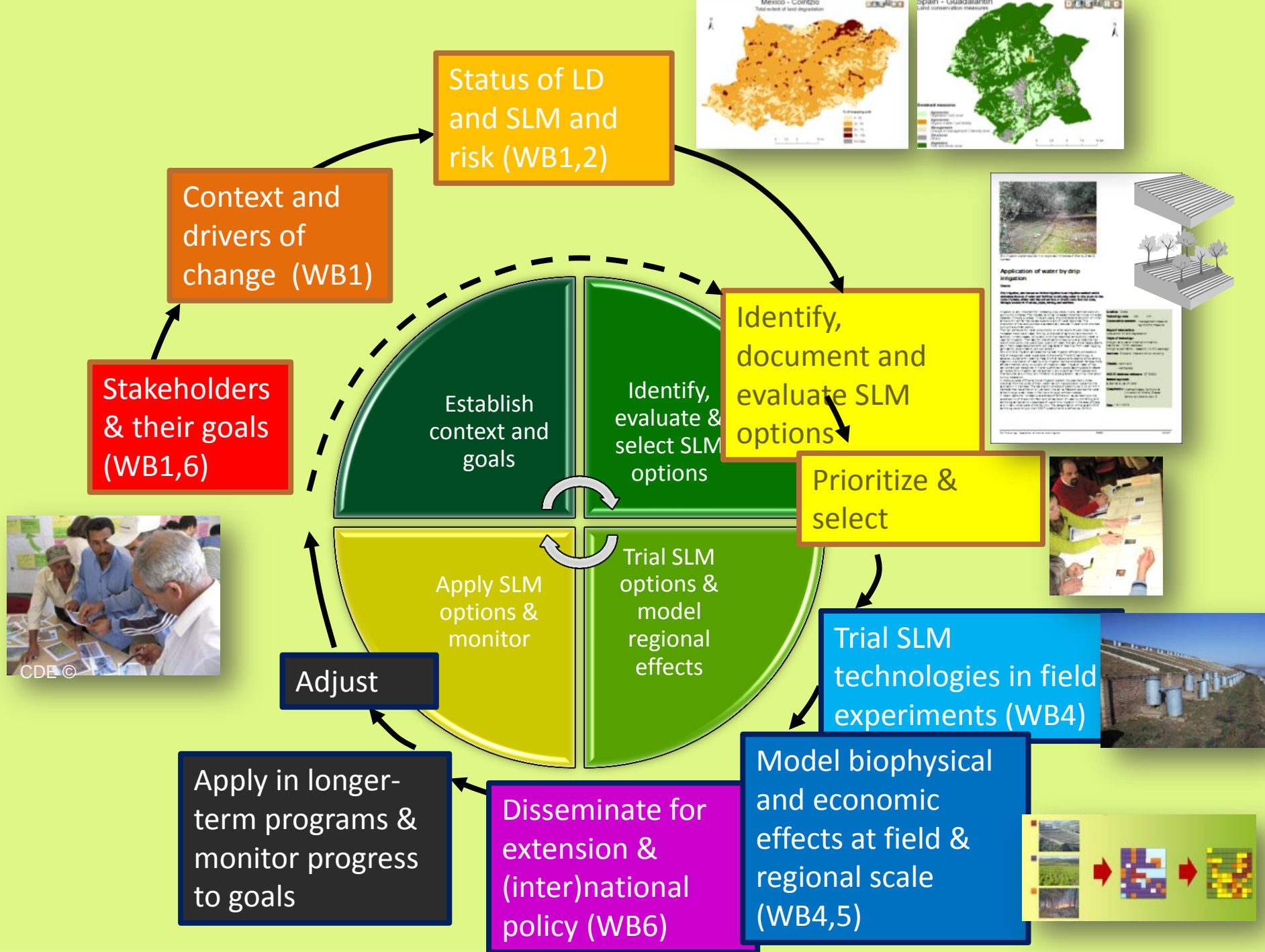
DESIRE's objectives:

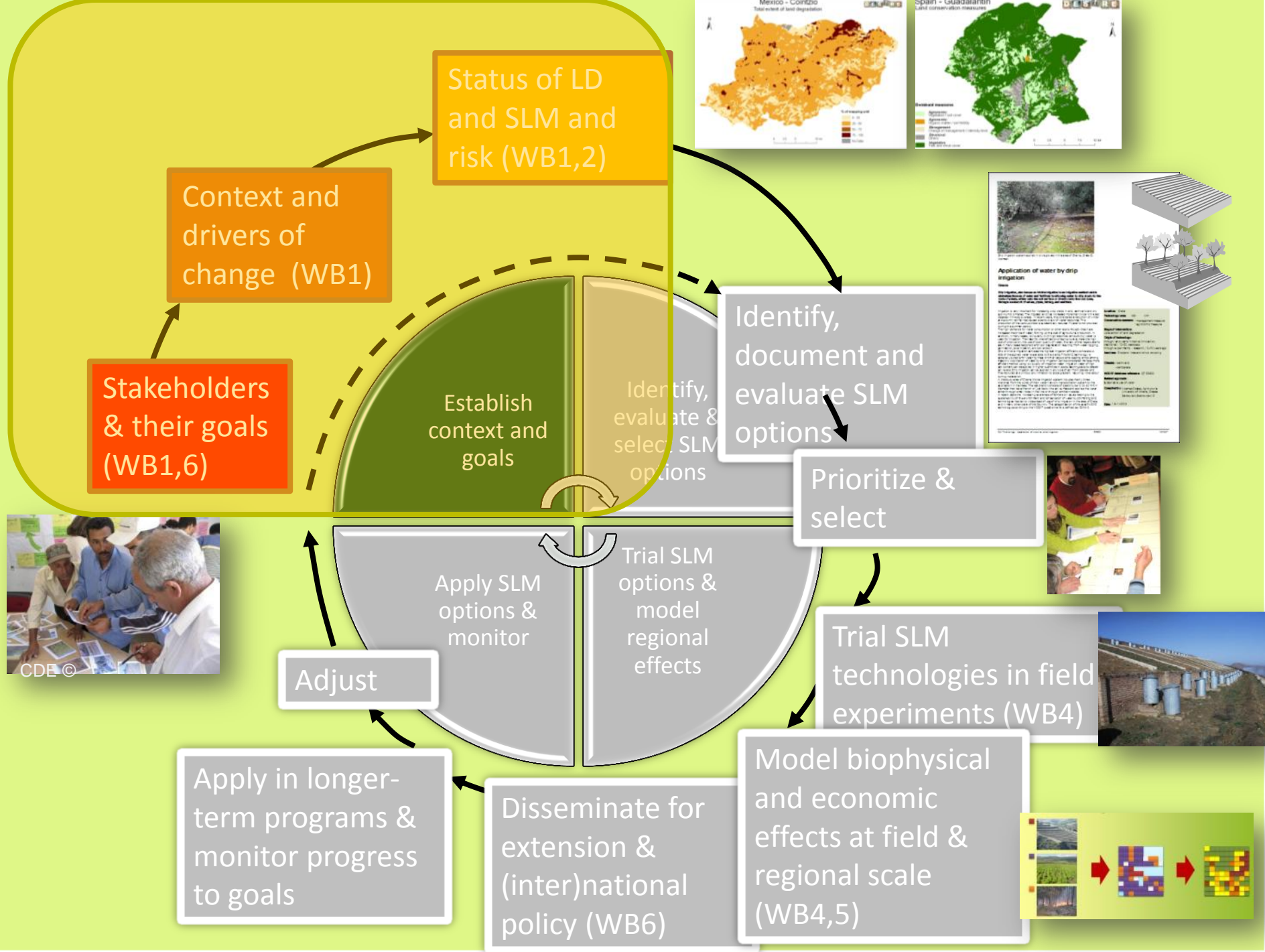
1. Give SLM measures a sound scientific basis
2. Improve definition of indicators
3. Assess and develop promising SLM strategies with stakeholder groups
4. Evaluate SLM measures on regional scale
5. Disseminate results, guidance and decision support tools in suitable formats for all relevant stakeholders



16 sites with different biophysical manifestations of desertification







Biophysical & human-environmental context of desertification

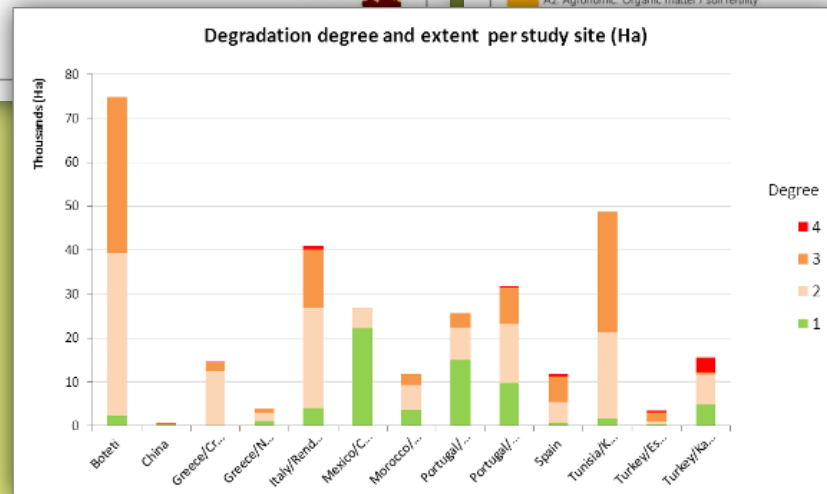
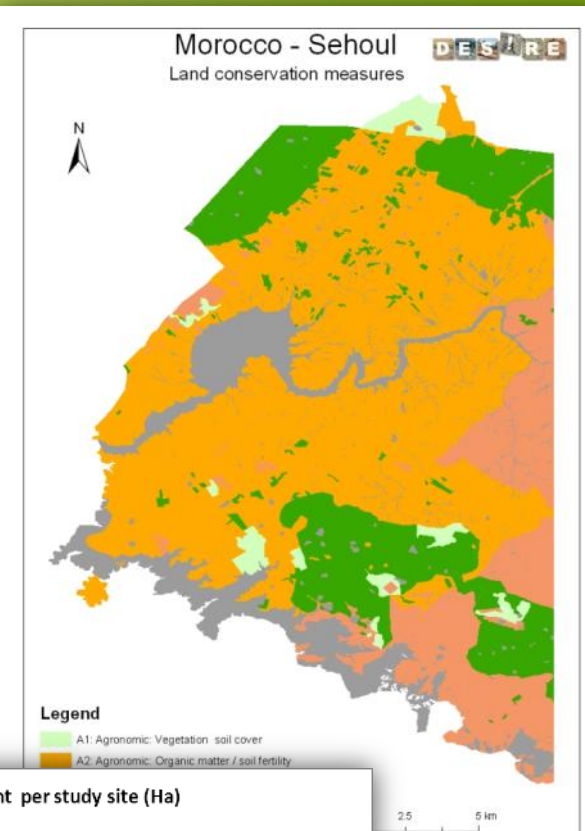
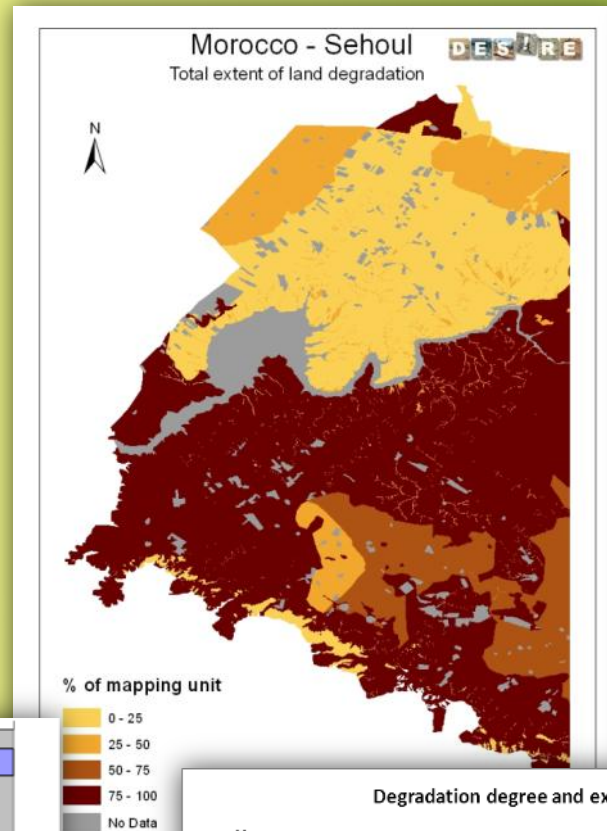
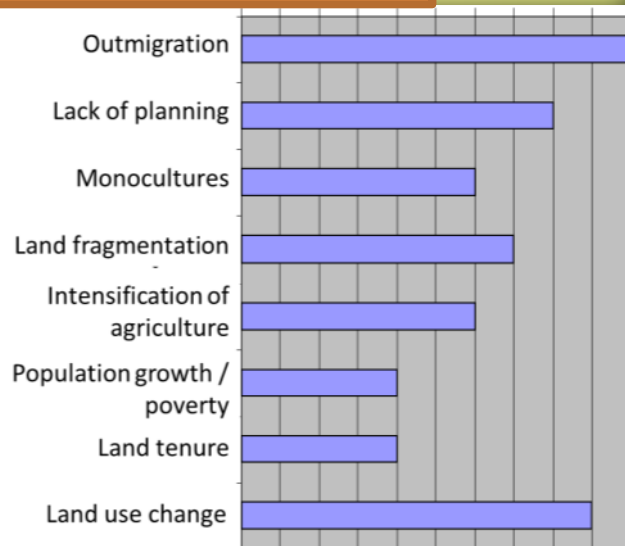
described and mapped
(LADA-WOCAT-DESIRE
mapping method)



WOCAT



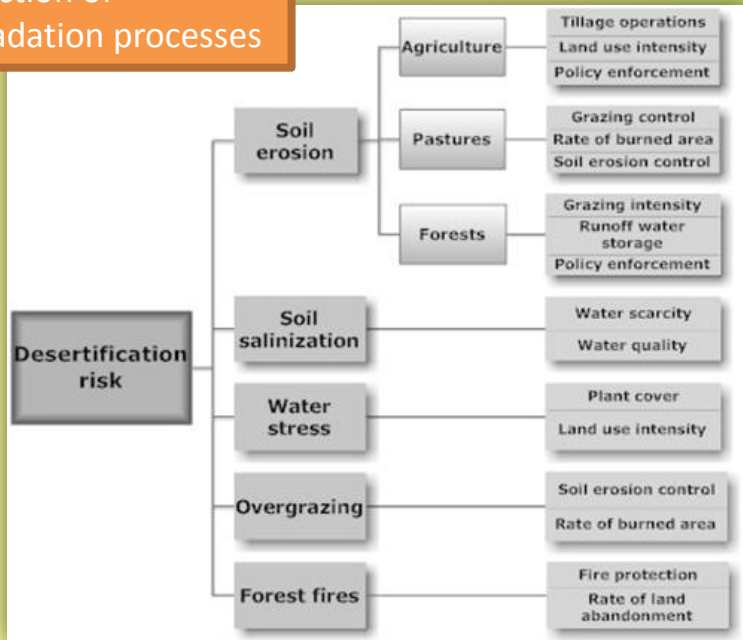
Drivers of desertification
in DESIRE study sites



Desertification indicators, risks and relationships to land management

Desertification risk as a function of degradation processes

Indicator datasets of all study sites



Degradation process	Major land use	Study sites	Field sites	Number of indicators used
Soil erosion by water runoff	Agriculture	9	477	49
	Pasture	8	244	49
	Forest	6	85	49
Tillage erosion	Agriculture	4	283	16
Soil salinization	Agriculture, natural vegetation	6	258	27
Water stress	Agriculture, natural vegetation	4	258	50
Overgrazing	Natural vegetation, agriculture	6	265	44
Forest fires	Natural vegetation	4	85	29

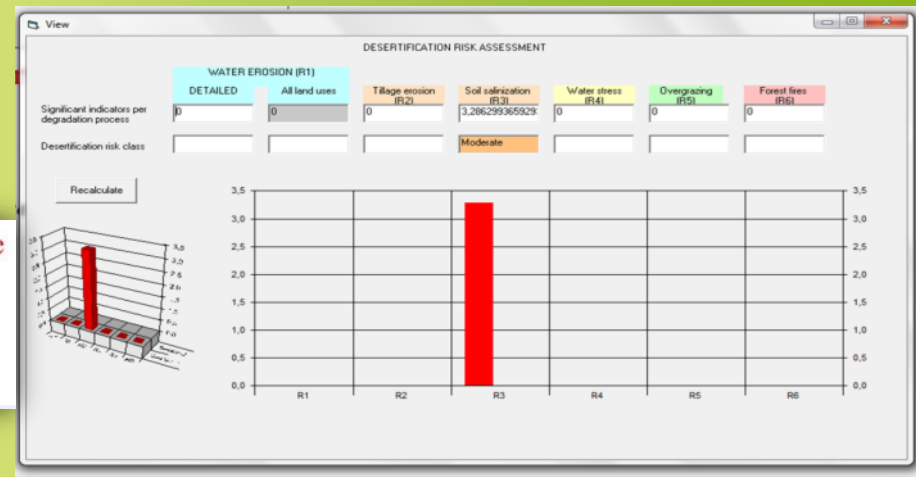
Expert system for assessing desertification risk

Desertification Risk Assessment Software

DESIRE

Desertification Mitigation And Remediation Of Land

ALTERRA
WAGENINGEN UR

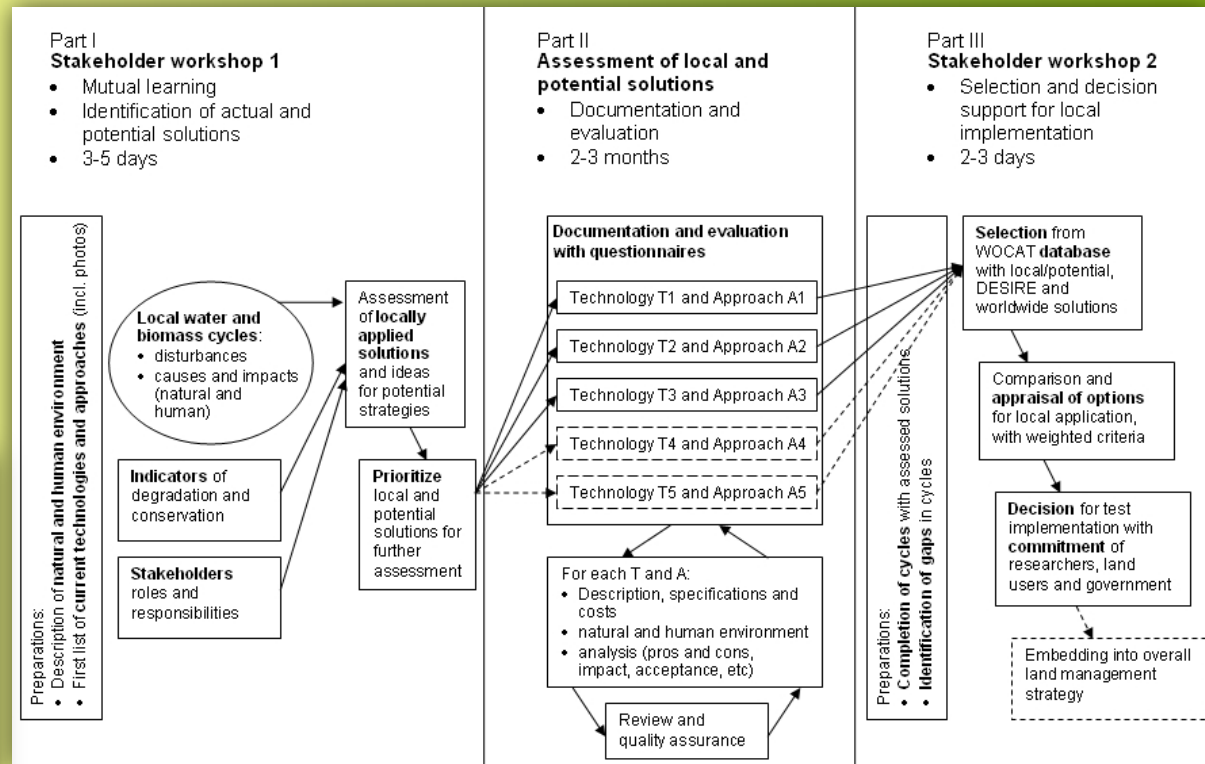




SLM technologies and approaches assessed and selected in a structured participatory process



Photo: G. Schwilch



DESIRE

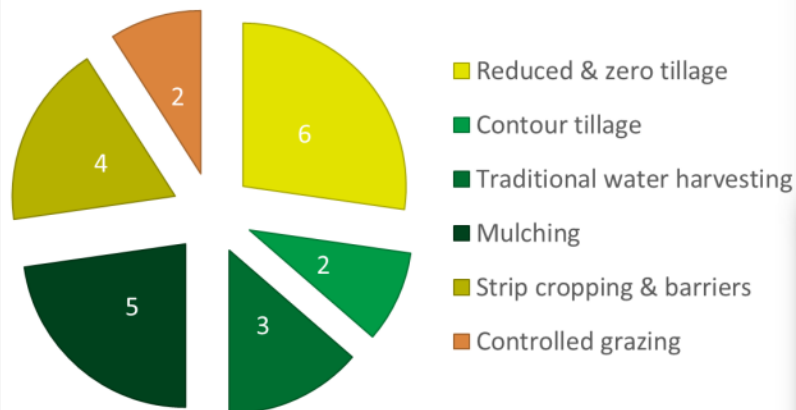
WOCAT



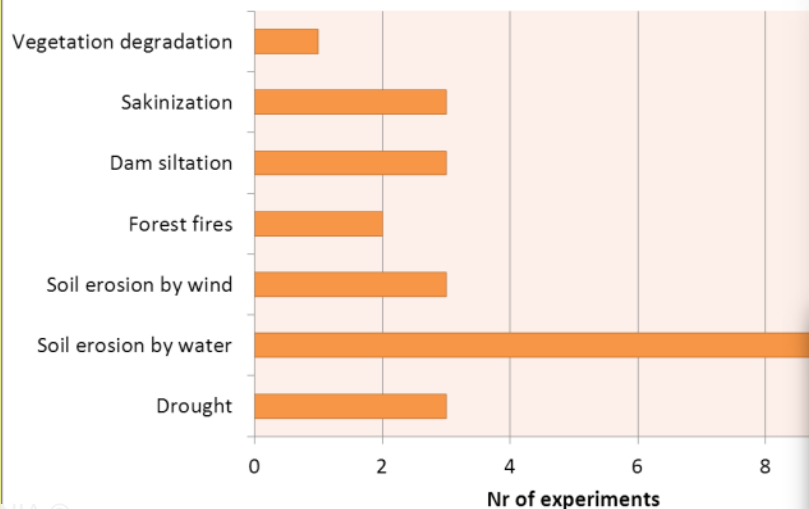
Testing of remediation strategies

22 SLM technologies
57 field experiments
13 countries

SLM Technology groups tested in DESIRE



Desertification problems addressed by SLM technologies



INIA ©

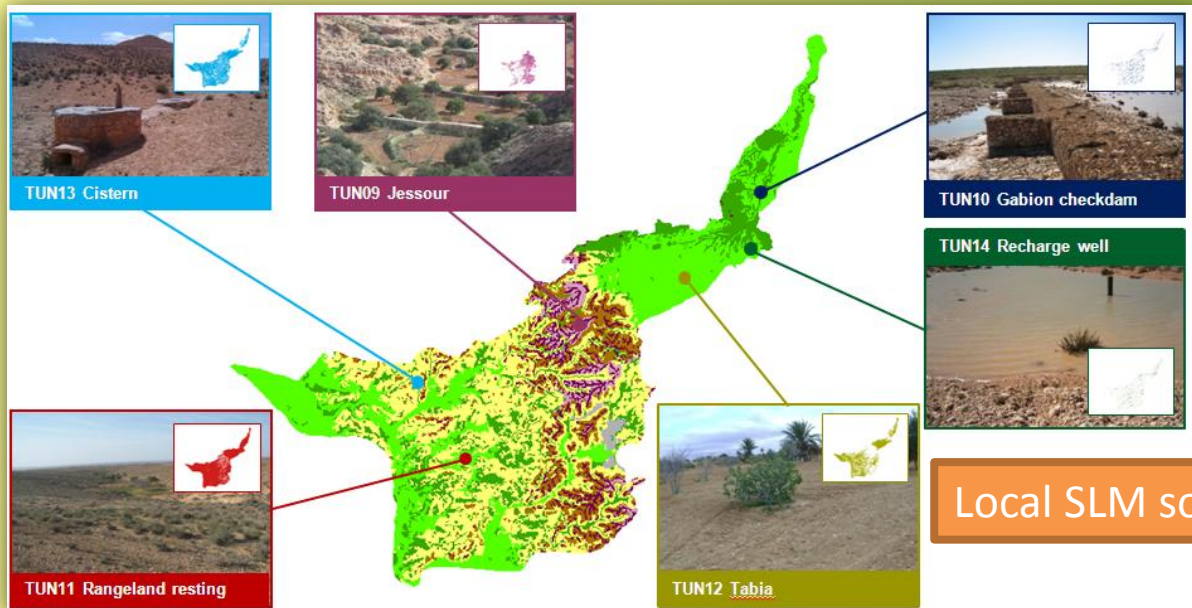


ALTERRA
WAGENINGEN UR



DESIRE

Regional assessment of local SLM solutions

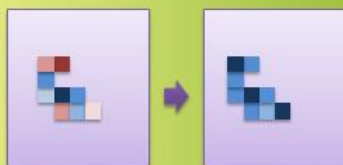


Assessment of effects of policy scenarios on uptake of SLM and mitigation of land degradation using the PESERA-DESMICE modelling framework

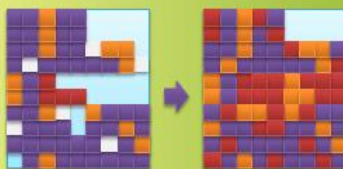
Local SLM solutions

Policy scenarios

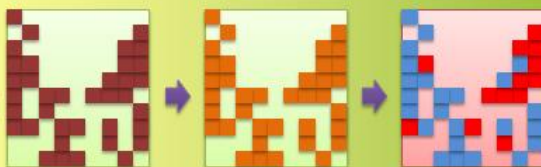
A. Policies affecting farmer's valuation of effects



B. Policies enforcing adoption of technologies

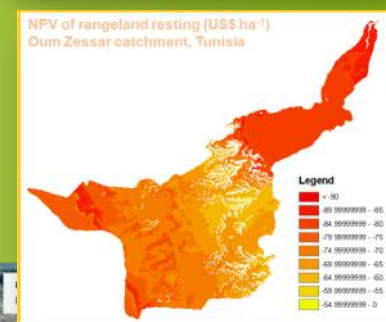
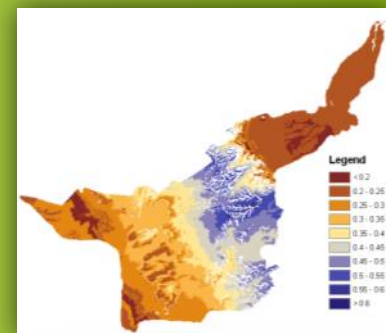


C. Policies stimulating/enforcing environmental targets



Expressing benefits of SLM in biophysical terms (e.g. biomass in kg/m²)...

... and in terms of US \$ (NPV)





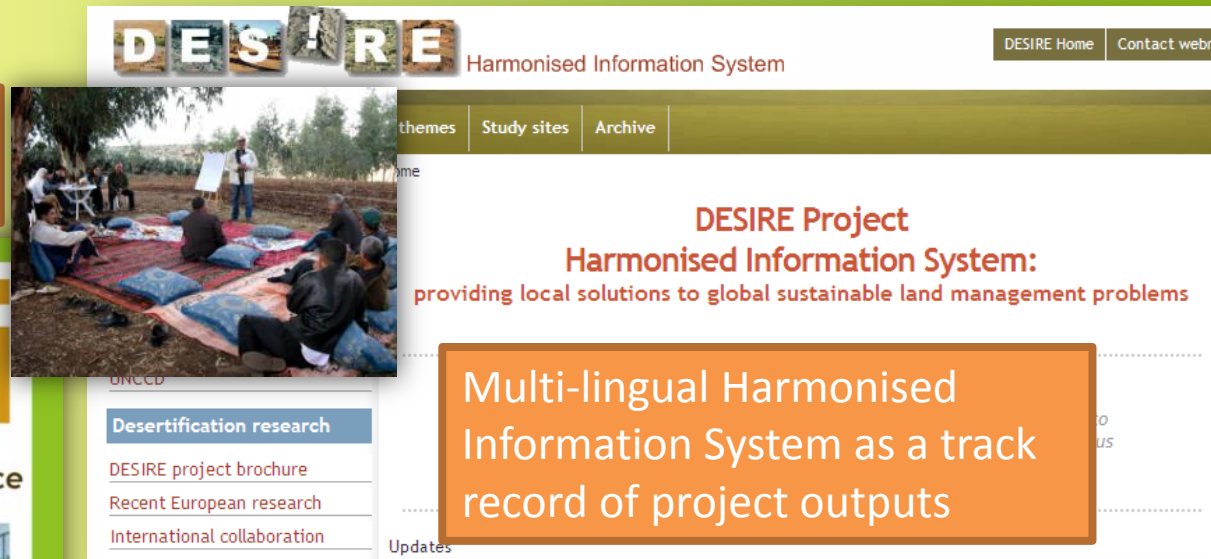
Dissemination to local stakeholders, (inter-)national policy & science

Local/regional: stakeholder meetings

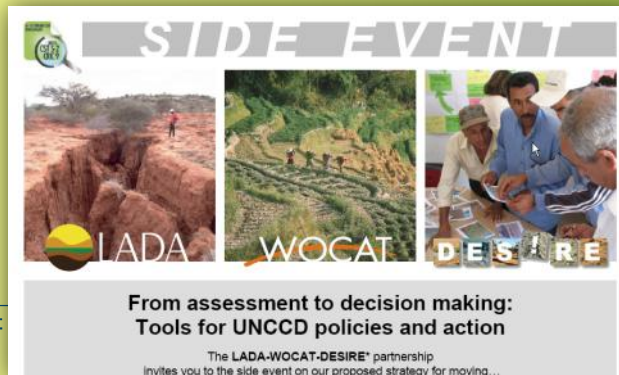


National: connecting DESIRE teams to National Focal Points & linking results of WB4/5 to NAPs

Global: joint involvement in UNCCD process (COP, CST, CRIC) with LADA and WOCAT



Scientific:
31 PhD researches papers (30 in 2010)



Thank you for your attention!



For more information, visit:

www.desire-his.eu

www.desire-project.eu

The DESIRE project (2007-2012) is funded by the European Commission, VI Framework Program, 'Global Change and Ecosystems' and the governments of France, the Netherlands, Italy and Spain. It brings together the expertise of 26 international research institutes and non-governmental organisations (NGOs). This project is coordinated by ALTERRA - Research Institute for the Green Living Environment, the Netherlands.

Copyright and Disclaimer: www.desire-project.eu/disclaimer

Website: www.desire-project.eu
Contact DESIRE Coordinator: Coen.Ritsemag@wur.nl
Contact DESIRE Communications: ngproject@googlmail.com
Contact EU Scientific Officer: Marie.Yeroyanni@ec.europa.eu

The opinions expressed in this newsletter and on the website are those of the DESIRE project consortium and do not necessarily reflect the views of the European Commission.



ALTERRA
WAGENINGEN UR

