

Does recreation affect Natura2000 goals for breeding birds?
a case study for the Veluwe

Pouwels, Rogier
Alterra, Wageningen UR
P.O.Box. 47, 6700 AA, Wageningen
rogier.pouwels@wur.nl

Henk Sierdsema
SOVON Vogelonderzoek Nederland
Rijksstraatweg 178, 6573 DG, Beek-Ubbergen;
henk.sierdsema@sovon.nl

Adrienn Aranyosi
Wageningen UR
P.O.Box. 47, 6700 AA, Wageningen
adrienn.aranyosi@wur.nl

Michiel van Eupen
Alterra, Wageningen UR
P.O.Box. 47, 6700 AA, Wageningen
michiel.vaneupen@wur.nl

René Henkens
Alterra, Wageningen UR
P.O.Box. 47, 6700 AA, Wageningen
rene.henkens@wur.nl

key words: recreation impact, birds, Natura2000, visitor distribution, regression analysis

In this paper we consider the relationship between biodiversity conservation and recreation activity in large nature areas in Europe. Legislation in the European Union aims for better protection of valuable species and habitats by implementing the Habitat and Birds directive. At the same time, health programs stimulate people to go out into these nature areas. Recreational use of nature areas is increasing (Kerbiriou et al. 2009), as is the variety of types of recreation (Naylor et al. 2009). However, there is evidence that stimulating these two functions may be incompatible (Young et al. 2005). Especially for birds, recreation activity was shown to affect population trends e.g. for Chough (Kerbiriou et al. 2009), Golden plover (Yalden & Yalden 1990), Black-tailed Godwit (Holm & Laursen 2009), Woodlark (Mallord et al. 2007) Wheatear (Van Turnhout et al. 2007), Nightjar (Liley & Clarke 2003) and Tawny pipit (Van Turnhout 2005).

In our currently ongoing research we investigate if recreation might be one of the factors affecting Natura2000 goals in one of the largest Natura2000 sites in the Netherlands, the Veluwe. The Veluwe is an almost 1000 km² large area on sandy soils containing woodlands, heathlands, sand dunes and small streams. The area is a popular area within the Netherlands for recreation and tourism and some parts contain high densities of bungalow parks and campsites. The Veluwe is designated as Natura2000 for protecting nature values from both the Habitat and Bird Directive. Considering breeding birds the Veluwe has been designated

for Wryneck, Nightjar, Woodlark, Tawny pipit, Stone Chat, Wheatear, Red-backed Shrike, Kingfisher, Honey Buzzard, Black Woodpecker.

The research is being conducted in three parts:

- developing an up to date map for recreation pressure
- analysing the effect of recreation on densities of the breeding birds
- evaluating whether recreation might effect the Natura2000 goals for breeding birds in the Veluwe

For the construction of an up to date GIS recreation map we included bungalow parks, campsites and car parks as a starting point for visitors of the area. Car parks near sport fields, large companies and high ways were left out. Based on GIS-maps, Google earth and field visits we assessed the capacity of car parks. Visitors from surrounding villages were randomly assigned to the car parks within a distance of 15 km while car parks nearby received a higher preference. The recreation model MASOOR (Jochem et al. 2008) was used to distribute the visitors over the trails.

For analysing the effect of recreation on breeding bird densities we used survey data obtained from 208 plots ranging from a few hectares till several hundreds of hectares. Extra layers of habitat information were used to make a predictive model for the densities in the survey plots. Next, the recreation pressure was added to the model and we analysed if the new model would give a better prediction for the bird densities.

The predictive model will be used to estimate total numbers of breeding pairs in the Veluwe. We will compared these numbers with the Natura2000 goals for the species. These results will be presented at the conference.

In total the capacity of 159 car parks at The Veluwe was determined. The total trail length at the Veluwe was 7429 km and approximately 200 bungalow parks and campsites were taken into account. Recreation pressure was highly diverse. The southeast part near Arnhem showed the highest pressure (up to 100.000 visitors per year) while some central parts were lowest (Fig. 1).

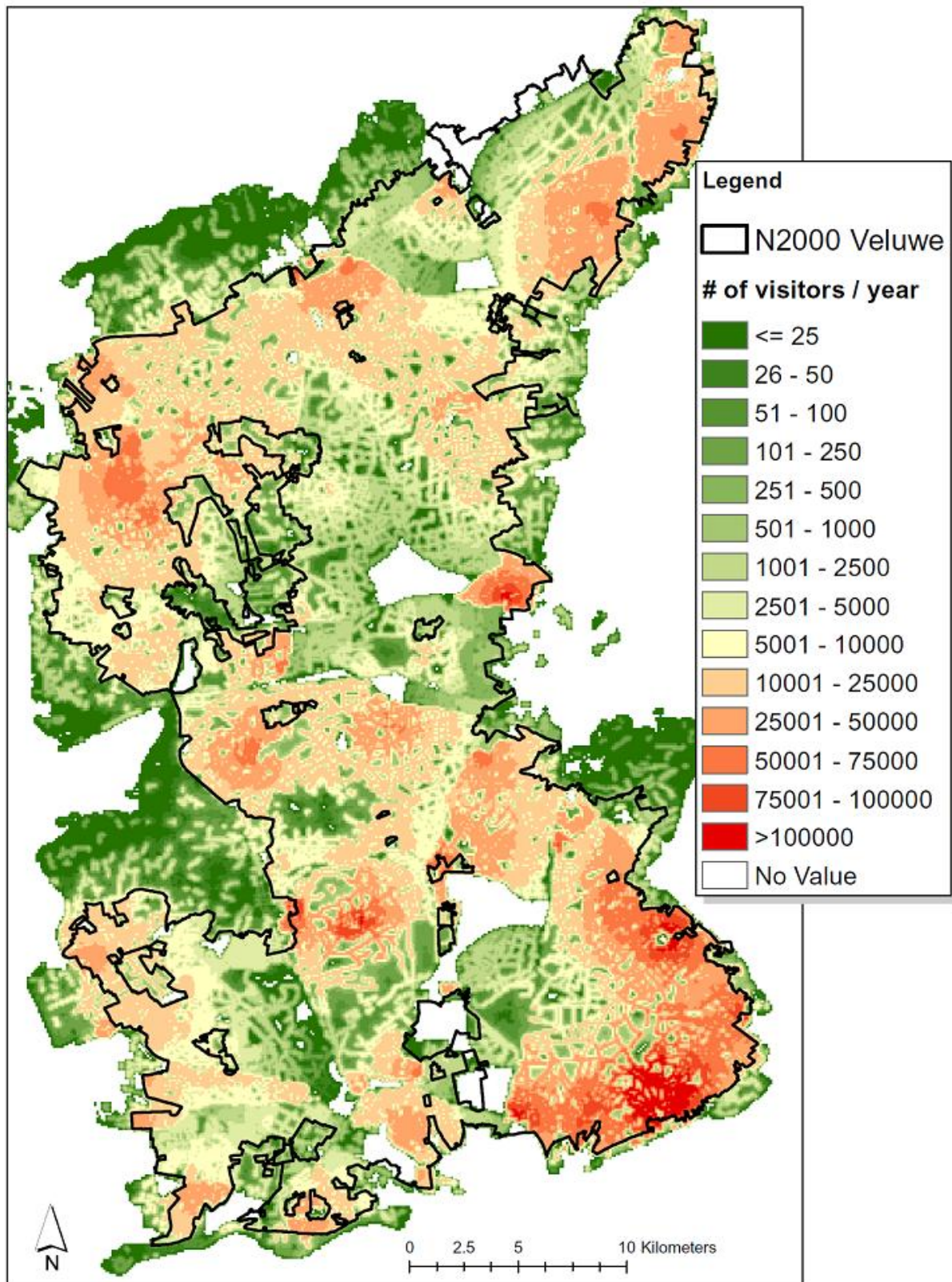


Fig. 1: Total recreation pressure.

Data availability for Wryneck, Red-beaked shrike, Tawny pipit and Kingfisher was limited and no useful models could be developed. The models for Black woodpecker and Honey buzzard showed no effect of recreation pressure. Nightjar, Woodlark, Stonechat and Wheatear

all showed lower densities by an increase of recreation pressure. This result confirms that heathland species are expected to be more sensitive to recreation than woodland species.

In the dilemma between recreational development and protecting biodiversity, scientists, policy makers, local managers and local communities need to meet each other in order to find a joint and acceptable solution for all (Cash et al. 2003). Scientists can contribute to conflict management by providing objective information (Young et al. 2005). They are expected to help justifying management plans and actions (McCool et al. 2007), but are confronted with a shortage of knowledge (Sutherland 2007) and a lack of sufficient long term monitoring data of both recreation (Cole 2006) and management effects (Wilhere 2002). With the final results of this research we hope to be able to fill in small part of the knowledge gap of the impact of visitors on biodiversity values at the landscape scale.

- Cash, D.W., W.C. Clark, F. Alcock, N.M. Dickson, N. Eckley, D.H. Guston, J. Jager & R.B. Mitchell. 2003. Knowledge systems for sustainable development. In: *Proceedings of the National Academy of Sciences of the United States of America* (100), p 8086-8091.
- Cole, D.N. 2006. Visitor and recreation impact monitoring: is it lost in the gulf between science and management? In: *The George Wright Society Forum* (23), p 11-16.
- Holm, T.E. & K. Laursen. 2009. Experimental disturbance by walkers affects behaviour and territory density of nesting Black-tailed Godwit *Limosa limosa*. In: *Ibis* (151), p77-87.
- Jochem, R., R. Van Marwijk, R. Pouwels & D.G. Pitt. 2008. MASOOR: modeling the transaction of people and environment on dense trail networks in natural resource settings. In: R. Gimblett and H. Skov-Petersen (eds.) *Monitoring, simulation and management of visitor landscapes*. p. 269-293. The University of Arizona Press, Tucson.
- Kerbiriou, C., I. Le Viol, A. Robert, E. Porcher, F. Gourmelon & R. Julliard. 2009. Tourism in protected areas can threaten wild populations: from individual response to population viability of the chough *Pyrrhocorax pyrrhocorax*. In: *Journal of Applied Ecology* (46), p 657-665.
- Liley, D. & R.T. Clarke. 2003. The impact of urban development and human disturbance on the numbers of nightjar *Caprimulgus europaeus* on heathlands in Dorset, England. In: *Biological Conservation* (114), p 219-230.
- Mallord, J.W., P.M. Dolman, A.F. Brown & W.J. Sutherland. 2007. Linking recreational disturbance to population size in a ground-nesting passerine. In: *Journal of Applied Ecology* (44), p 185-195.
- McCool, S.F., R.N. Clark & G.H. Stankey. 2007. *An assessment of frameworks useful for public land recreation planning*. Gen. Tech. Rep. PNW-GTR-705, U.S. Department of Agriculture, Forest Service, Pacific Northwest Research Station, Portland, OR.
- Naylor, L.M., M.J. Wisdom & R.G. Anthony. 2009. Behavioral Responses of North American Elk to Recreational Activity. In: *Journal of Wildlife Management* (73), p328-338.
- Sutherland, W.J. 2007. Future directions in disturbance research. In: *Ibis* (149), p 120-124.
- Van Turnhout, C., J. Aben, P. Beusink, F. Majoor, H. Van Oosten & H. Esselink. 2007. Breeding succes and feeding ecology of the declining Dutch Wheatear *Oenanthe oenanthe* population. In: *Limosa* (80), p 117-122.
- Van Turnhout, C.A.M. 2005. The disappearance of the Tawny pipit *Anthus campestris* as a breeding bird from the Netherlands and Northwest-Europe. In: *Limosa* (78), p 1-14.
- Wilhere, G.F. 2002. Adaptive management in habitat conservation plans. In: *Conservation Biology* (16), p 20-29.

- Yalden, P.E. & D.W. Yalden. 1990. Recreational disturbances of breeding golden plovers *Pluvialis apricarius*. In: *Biological Conservation* (51), p 243-262.
- Young, J., A. Watt, P. Nowicki, D. Alard, J. Clitherow, K. Henle, R. Johnson, E. Laczko, D. McCracken, S. Matouch, J. Niemela & C. Richards. 2005. Towards sustainable land use: identifying and managing the conflicts between human activities and biodiversity conservation in Europe. In: *Biodiversity and Conservation* (14), p 1641-1661.