



Facilities and Services

Library

Metis and WaY

A powerful combination

P.L. van der Togt, W. Gerritsma and J. Ringersma

Introduction

Institutional bibliography

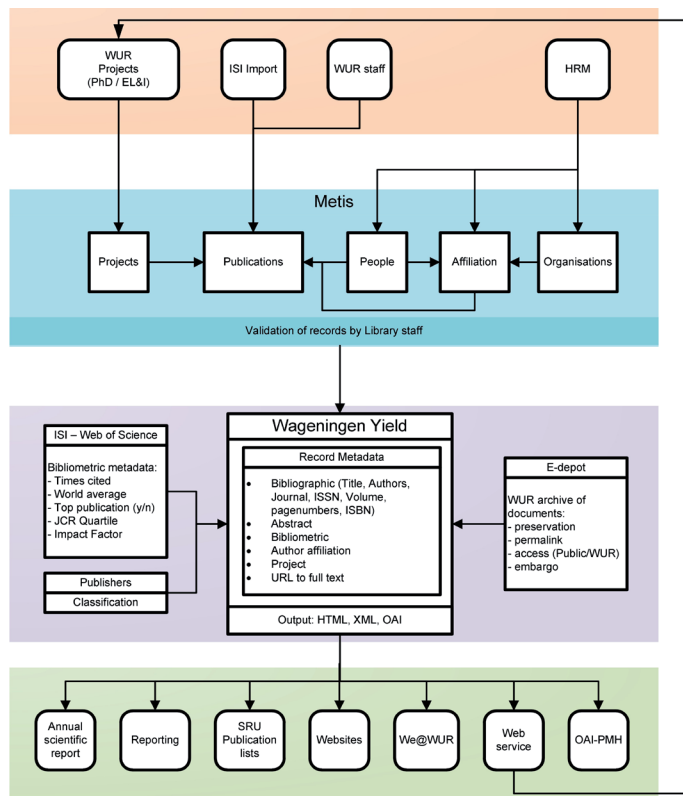
Reporting tool

Advanced Bibliometrics

Open Access

Introduction

All publication output of Wageningen UR (WUR) staff is collected and registered in the current research information system Metis and made available on the Web through our repository Wageningen Yield (WaY). WaY has a double function. It is the comprehensive institutional bibliography as well as the institutional open access repository. Publication metadata from WaY is used throughout the systems and websites of the university, as well as being syndicated to other discovery systems. The slogan used to our researchers is 'Register your publication once and reuse it as often as possible!'



Institutional bibliography

WaY permits users to build SRU-queries to show publication lists for staff members, research groups and research themes. The links thus created can be published on websites, electronic business cards, and the university's white pages etc. All metadata from the Wageningen UR bibliography are also made available by web services and OAI-PMH harvesting protocols.

Reporting tool

For annual reporting, external peer reviews and other audits data from WUR publications are aggregated according to the Standard Evaluation Protocol for publication productivity of the chair groups and graduate schools.

Advanced Bibliometrics

By combining the publication metadata with Thomson Reuters Web of Science (WoS) data (citations) and Essential Science Indicators (ESI) base-line data to calculate advanced bibliometric indicators for staff members, research groups and research themes or graduate schools. The WoS and ESI data are updated four times per year. The citation impact module for the institutional bibliography has raised awareness for the repository enormously. Resulting in a more comprehensive registration of publications and increased awareness of Open Access policies.

| Research Field | N | C | Wavg | CPP | CI | RI | %T10 (T10) | %T1 (T1) | %NC (NC) |
|--------------------------|----|-----|--------|-------|------|------|------------|----------|----------|
| Agricultural Sciences | 6 | 40 | 52.97 | 6.67 | 0.76 | 0.74 | 0% (0) | 0% (0) | 17% (1) |
| Environment/Ecology | 9 | 96 | 70.92 | 10.67 | 1.35 | 1.55 | 22% (2) | 0% (0) | 0% (0) |
| Plant & Animal Science | 12 | 59 | 66.74 | 4.92 | 0.88 | 1.03 | 8% (1) | 0% (0) | 0% (0) |
| Social Sciences, general | 12 | 46 | 29.53 | 3.83 | 1.56 | 2.66 | 33% (4) | 8% (1) | 17% (2) |
| All research fields | 39 | 241 | 220.16 | 6.18 | 1.09 | 1.61 | 18% (7) | 3% (1) | 8% (3) |

Open Access

By connecting WaY to the Wageningen UR e-depot, the full text repository, Open Access publications are made available in an efficient way. The metadata of the records are only registered once. We don't rely on authors to upload OA versions only, we use metadata from the institutional bibliography to check with the Sherpa Romeo API whether versions can be made available through delayed OA. Open Access harvesting via OAI-PMH is facilitated by offering an Open Access subset.

Peter L. van der Togt, Tel. +31 (0) 317 48 14 48, peter.vandertogt@wur.nl, www.library.wur.nl



WAGENINGEN UR
For quality of life