



Building with Nature



EcoShape

Midterm conference Building with Nature

Introduction to the case Markermeer –
IJsselmeer

Erik van Slobbe

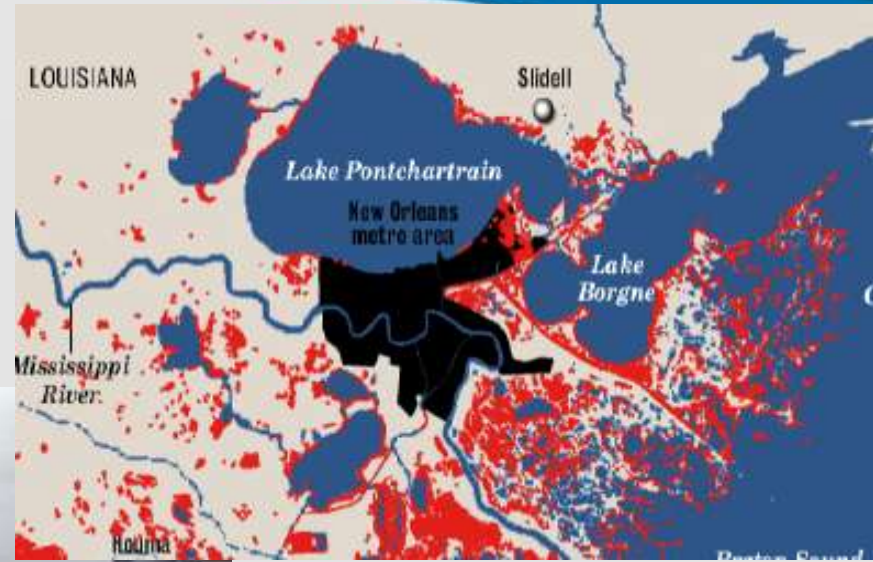
The Marker-lake IJssel-lake case

1. Relevance of delta lakes and reservoirs in the world
2. Some issues
3. MIJ case activities
4. Results (now and in the near future)

The Etang the Berre



Lake Pontchartrain



Ijssel-lake region



Zuiderzee before 1930



Marker-lake nowadays

What issues connect the delta lakes of the world?

- Climate change and safety against floods
- Human pressures versus environmental quality
- Complex governance
- The limits of technological fixes and the need for alternatives



MIJ case objective

Developing innovative approaches for lake management from an ecodynamic perspective:

- Interventions for an ecological regime shift
- Ecodynamic designs of structures
- Visioning for sustainable futures



Contribution to an ecological regime shift of Marker-lake

- Two PhD's
- Collaboration with Natura 2000 research program (ANT)
- Collaboration with Marker-lake multi government platforms on lake future (TMIJ & WMIJ)

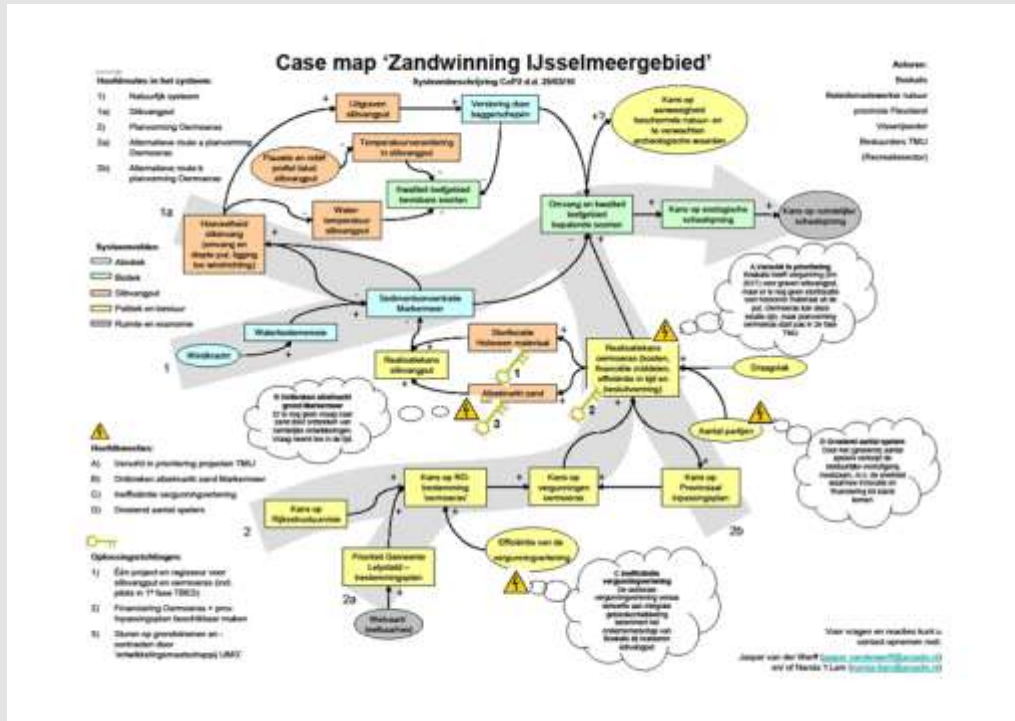


Ecodynamic pilots along the Frisian IJssel-lake coast

- With nature NGO: It Fryske Gea, Water Board, Province and Rijkswaterstaat
- Three experiments: renewal of nature, security against floods, recreation



Explorations for development of sustainable ecodynamic futures



Conclusion

The case Marker-lake and Ijssel-lake is addressing governance, ecological and design issues.

Experiments are on-going and monitoring of morphology, ecology and governance is implemented

Building with nature wants to contribute in 2012 to policy making on:

- Ecological regime shift in the Marker-lake
- Climate adaptation policies in Ijssel-lake
- Visions on and tools for sustainable ecodynamic futures of delta lakes and reservoirs in the world.