



Effect of reducing nitrate concentrations under Dutch dairy farms on economic performance

Joan Reijs & Co Daatselaar

Minerals Policy Monitoring Programme

Thanks to: Dico Fraters, Leo Boumans, Ton van Leeuwen, Gerben Doornwaard, Wim de Hoop and many others

Outline of presentation

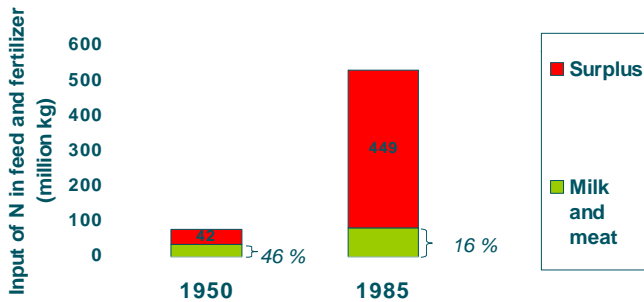
Background on

- Manure policy and monitoring programme in the Netherlands
- Achievements of Dutch dairy farms on sandy soils so far

Results of research:

- How are farm management, economic performance and environmental performance related?

Nitrogen (N) in Dutch dairy farming sector 1950-1985



Ketelaars & Van der Ven, 1992

Major developments manure policy in the Netherlands

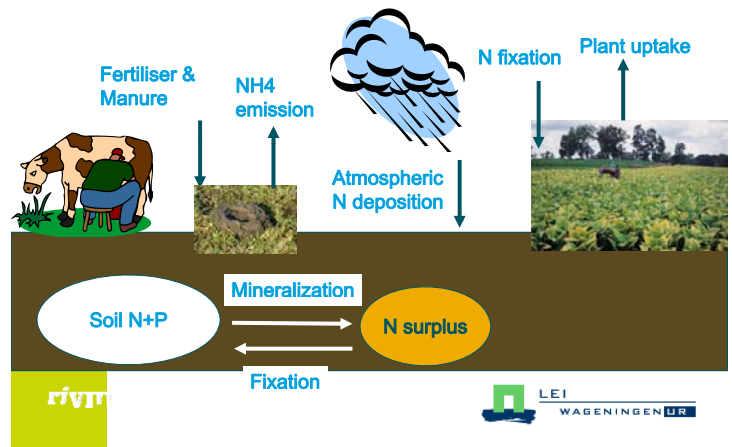
- 1984 – 1990: introduction of manure application limits
- 1991: EU nitrate Directive (50 mg NO₃/l)
- 1991 – 1997: decrease of manure production, ban on manure application in winter, emission reducing techniques
- 1998 – 2005: MINAS → mineral accounting system
- 2006 onwards: manure application standards
 - 250 (grassland farms) or 170 (other farms) kg N from animal manure
 - Total N and P application standards per crop

Minerals Policy Monitoring Programme

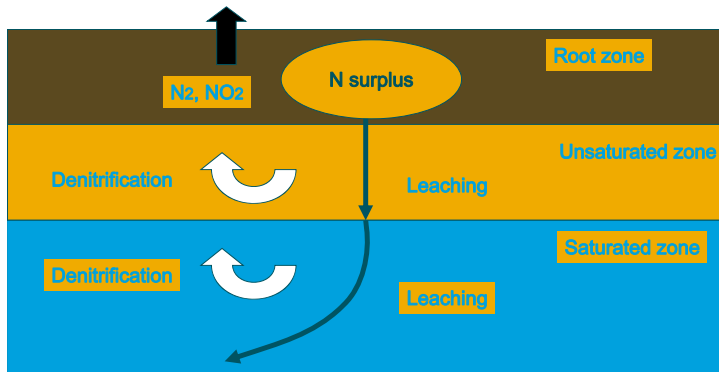
Goal: Measure effectiveness of Dutch action programmes to comply with EU Nitrate Directive

- From 1992 onwards
- Representative sample of Dutch farms:
 - Dairy farms, Arable farms, other animal husbandry farms
 - 4 regions: Sandy, clay, peat, loess
- Monitoring of (a.o.)
 - Nitrate leaching from root zone (RIVM)
 - Nitrogen surplus (LEI)

Nitrogen surplus: soil balance



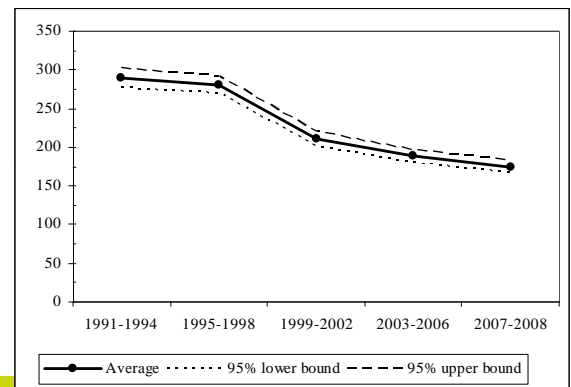
Destiny of nitrogen surplus



rivm

LEI
WAGENINGEN UR

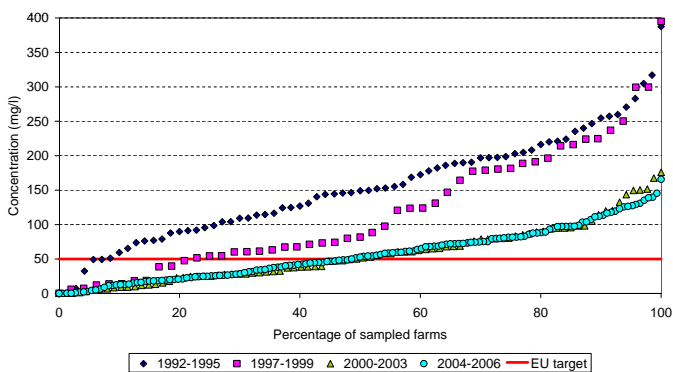
Trend in N surplus for dairy farms on sandy soils



rivm

LEI
WAGENINGEN UR

Nitrate in upper groundwater of dairy farms in sand regions



rivm

Zwart et al., 2008

LEI
WAGENINGEN UR

Variation in farm results in 2006 (154 dairy farms on sandy soils)

Farm characteristic	Percentile		
	5%	50%	95%
Milk production per farm (kg FPCM)	215,551	576,986	1,190,010
Milk production (kg FPCM/ha)			131
Milk production (kg FPCM/cow)			881
Fodder yield (kg DM/ha)			070
Gross Margin (€)			2.97
Net result (€)			0.05
Soil N surplus (kg/ha)	82	171	263
Nitrate concentrations (mg/l)	10	51	129

Enormous variation in economic and environmental performance

(How) are they related?

What can we learn from it?

rivm

LEI
WAGENINGEN UR

Relations on farm level

- Are economic and environmental performance related to farm structure and/or farm management?
- Synergy between economic and environmental performance?

=> Regression analysis: 485 dairy farms on sandy soils 1991-2006

rivm

LEI
WAGENINGEN UR

Effect of farm structure on farm performance

Farm characteristic	Effect on:			
	Soil N surplus	Nitrate concentration	Gross margin	Net result
Farm size (ESU)		+	---	+++
Percentage of animals in pigs and poultry	-			--
Percentage of total area in non-fodder crops		+		-
Percentage of total area in grassland	--	++	--	

rivm

LEI
WAGENINGEN UR

Effect of farm management on farm performance

Management characteristic	Effect on:			
	Soil N surplus	Nitrate concentration	Gross margin	Net Result
Capacity manure storage (months)		+		--
Kg N art. fertilizer / ha grassland	---	--	-	
Kg N organic fertilizer / ha	---	-	-	+
Kg milk per cow	-	++	-	+++
Concentrate use (DFU / kg milk)	-	--		-
Mowing percentage		++		
Fodder yield (DFU / ha)	+++		+++	++

rivm



Difference between farms with high and low N surplus

N surplus	Low	Average	High
<i>Number of farms</i>	51	52	51
Soil N surplus (kg N per ha)	107	171	228
Milk production per ha (kg FPCM)	14296	14398	14451
Milk production farm	681908	664687	583473
Percentage of animals in pigs and poultry (LSU)	0.0 ^a	5.0 ^b	7.9 ^b
Kg N art. fertilizer / ha grassland	112 ^{ab}	160 ^a	174 ^b
Kg N organic fertilizer / ha	225 ^a	250 ^b	258 ^b
Milk production per cow (kg / year)	7665 ^a	8268 ^b	8258 ^b
Gross Margin (€/100 kg melk)	28.7 ^a	27.0 ^b	26.9 ^b
Net result (€/100 kg melk)	-11.6 ^a	-11.7 ^a	-17.5 ^b
Nitrate concentration (mg/l)	53	58	65
Deviation expected nitrate concentration (mg/l)	-14 ^a	-7 ^{ab}	3 ^b

^{abc} significant differences (P<0,05)

rivm



Difference between farms with positive and negative performance on nitrate

Deviation from expected nitrate concentration	Positive	Neutral	Negative
<i>Number of farms</i>	51	52	51
Deviation expected nitrate concentration (mg/l)	-37	-10	30
Milk production per ha (kg FPCM)	13048 ^a	14626 ^b	15467 ^b
Percentage of animals in pigs and poultry (LSU)	1.9 ^a	2.5 ^a	8.6 ^b
Kg N art. fertilizer / ha grassland	148 ^{ab}	136 ^b	162 ^b
Kg N organic fertilizer / ha	233 ^a	244 ^{ab}	257 ^b
Soil N surplus (kg N / ha)	165 ^{ab}	159 ^a	183 ^b
Grazing in autumn (% of time)	29 ^a	42 ^b	32 ^{ab}
Gross Margin (€/100 kg melk)	27.2 ^{ab}	28.0 ^a	26.5 ^b
Nitrate concentration (mg/l)	29 ^a	52 ^b	95 ^c

^{abc} significant differences (P<0,05)

rivm



Conclusions I

Manure policies during last decades have resulted in a strong decrease of nitrogen surpluses and nitrate concentrations

- Last years both surpluses and concentrations are stabilizing
- On average 50 mg/l is within reach but still a large number of farms exceeds the EU standard

rivm



Conclusions II

Reducing nitrate concentrations does not necessarily hamper the economic performance!

- Increasing the yield of fodder crops without an increased use of artificial fertilizer is both economically and environmentally attractive
- Farms with a good performance on nitrate tend to have a better economic performance
- Farms with low surpluses have a better economic performance

rivm



Key issues of this presentation

- In the Netherlands we have come a long way in reducing nitrogen use and nitrate concentrations on dairy farms.
- The question is whether further improvement can be made to obtain the EU directive of 50 mg/l on all farms.
- Variation in farm management is large. That offers opportunities to improve environmental performance.
- Economic and environmental performance often go hand in hand. This is an important key in further reduction of nutrient loads.

rivm





Thank you for your attention