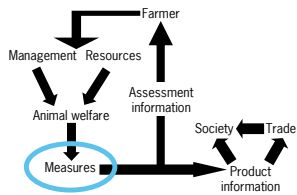


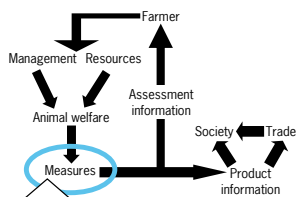


How did we design the welfare measures

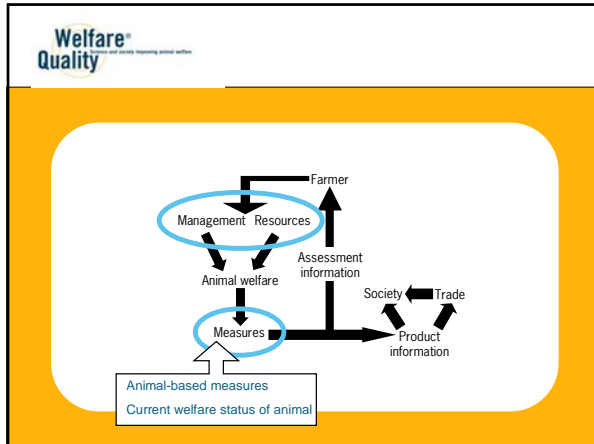
Linda Keeling
Swedish University of Agricultural Sciences

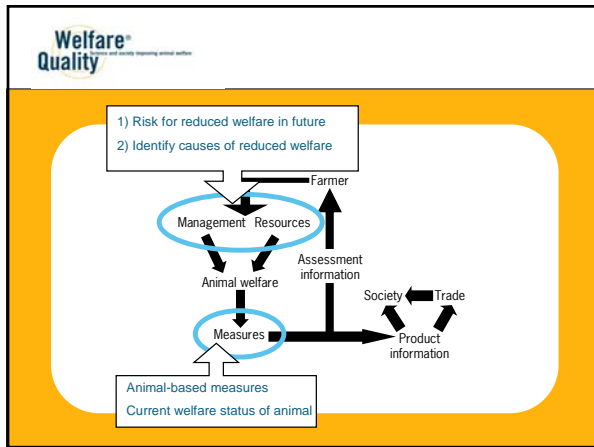


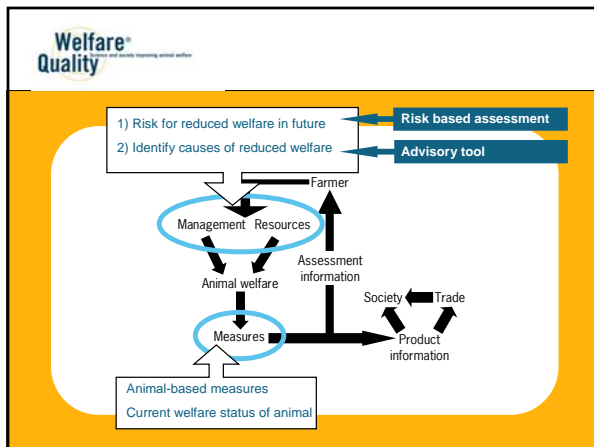


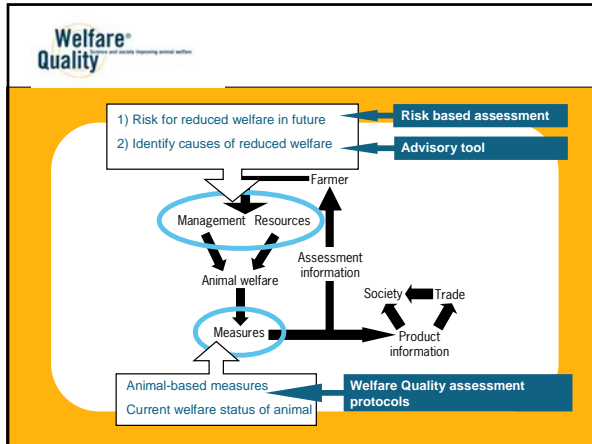


Animal-based measures
Current welfare status of animal










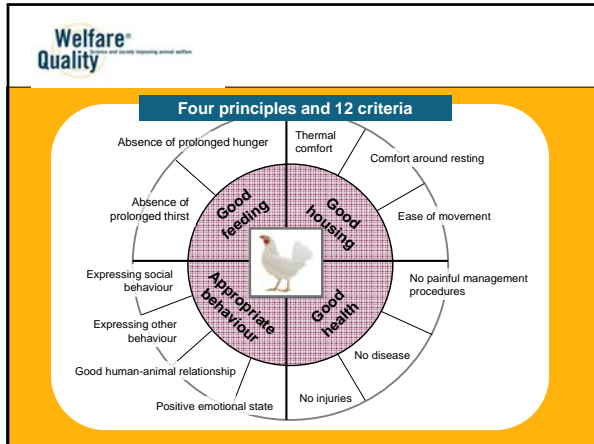
Welfare Quality
Developed and verified following animal welfare

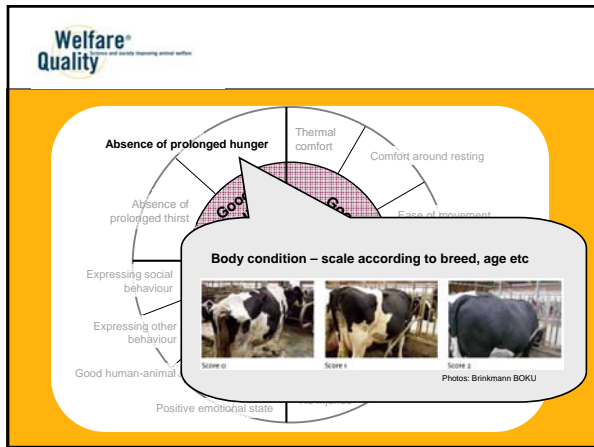
Focus on animal-based measures

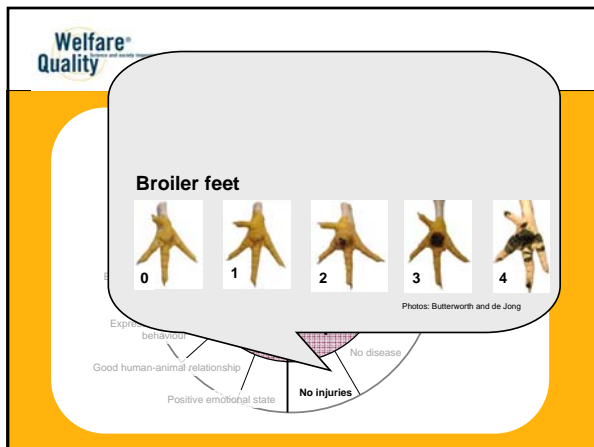


In: Dairy cattle, beef cattle, veal calves, sows with piglets, fattening pigs, laying hens and broilers









Welfare Quality

Video image at slaughter

0 1 2 3 4

Photos: Butterworth and de Jong

Expressive behaviour
Good human-animal relationship
Positive emotional state
No disease
No injuries

Welfare Quality

- Wounds
- Scratches
- Location

Expressive behaviour
Good human-animal relationship
Positive emotional state
No disease
No injuries

Welfare Quality

- Wounds
- Scratches
- Location

Ears

0 1 2

Photos: University of Newcastle

Expressive behaviour
Good human-animal relationship
Positive emotional state
No disease
No injuries

