

# Towards (self)sustainability of European Regional Cattle breeds (EURECA)

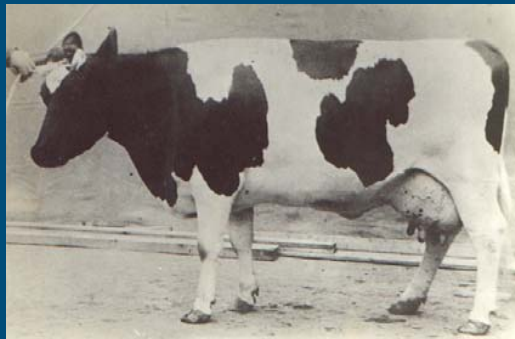
*an integrative approach  
using case studies*

EU GENRES 012 (870/04)

Contract number AGRI-2006-0264

# Background to EURECA project

- Replacement of local/regional, often 'dual purpose' cattle breeds by specialized, international breeds
- How to maintain these breeds, the associated agro-ecosystems and our cultural heritage ?
- Successful strategies for conservation, development and use of such 'regional/local' cattle breeds ?



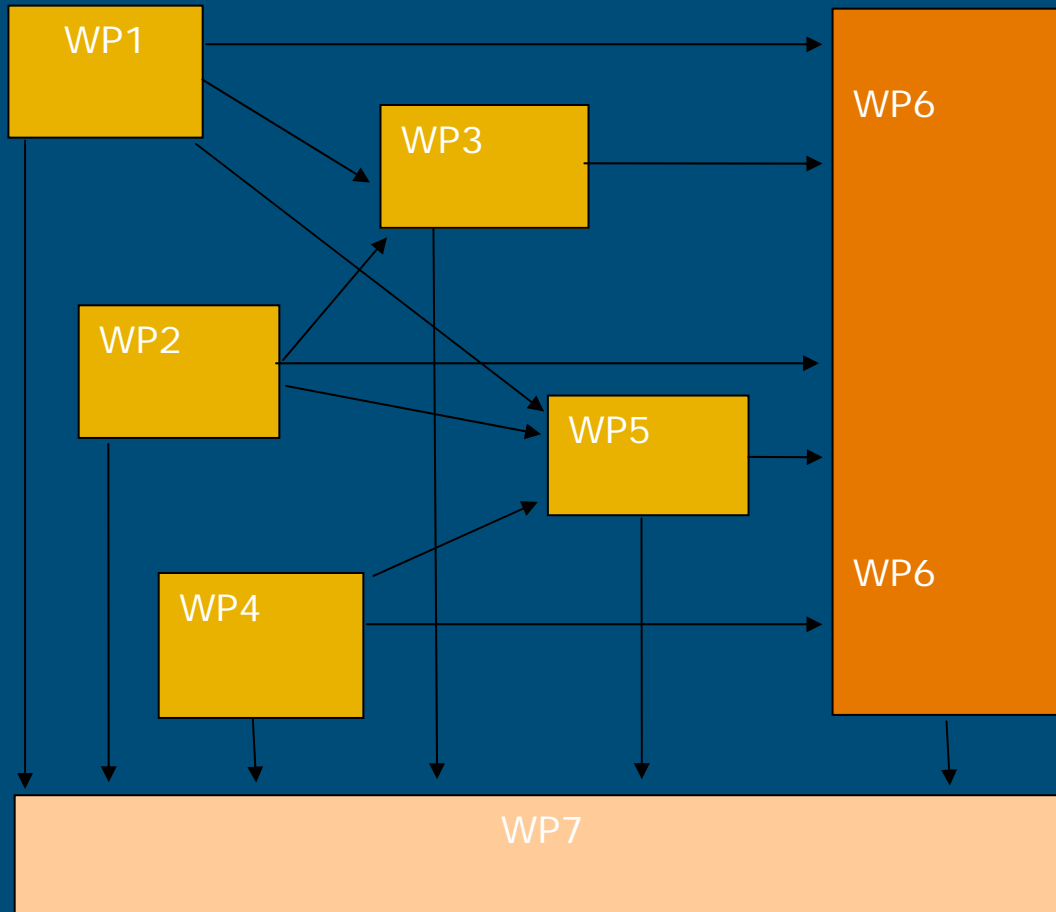
Centre for Genetic Resources, the Netherlands

# EURECA objectives

- To better understand the factors affecting the dynamics of local/regional cattle breeds
  - To assess status and organisation of existing cattle cryopreservation programmes
  - To review available methodologies and software, which are useful supportive tools for genetic management
- To carry out a Europe-wide cattle breed survey
- To construct a map of breed development perspectives and suggest guidelines for successful programmes
- To disseminate state of the art knowledge + 'good practices'

Centre for Genetic Resources, the Netherlands

WP8



- WP1 – Breed cases (>15)
- WP2 – Cryo survey (>4)
- WP3 – Europe wide survey
- WP4 – Useful tools
- WP5 – Breed strategy demo (4)
- WP6 – Guideline/expert system
- WP7 – Dissemination
- WP8 – Coordination

Centre for Genetic Resources, the Netherlands

<b>Work package</b>	<b>WP leader</b>	<b>Partners involved</b>
<b>WP1</b>	<b>P2 – UNIMI – Italy - Gandini</b>	<b>P0, P1, P3, P4, P5, P6, P7, P8</b>
<b>WP2</b>	<b>P1 – IE – France - Avon</b>	<b>P0, P2, P3</b>
<b>WP3</b>	<b>P1 – IE – France - Avon</b>	<b>P0, P2</b>
<b>WP4</b>	<b>P3 – MTT – Finland – Maki Tanila</b>	<b>P0, P1, P2, P4, P7, P8, P9</b>
<b>WP5</b>	<b>P0 – CGN – Netherlands - Hiemstra</b>	<b>P1, P4, P7, P8</b>
<b>WP6</b>	<b>P2 – UNIMI – Italy - Gandini</b>	<b>P0, P1, P3</b>
<b>WP7</b>	<b>P0 – CGN – Netherlands - Hiemstra</b>	<b>P1, P2, P3</b>
<b>WP8</b>	<b>P0 - CGN – Netherlands - Hiemstra</b>	<b>P1, P2, P3</b>

**P4 – FUSAGx – Belgium – Gengler**

**P5 – EAU – Estonia –Viinalass**

**P6 – NRIAP – Poland – Choroszy**

**P7 – ICBF – Ireland – Wickham**

**P8 – INIA – Spain – Diaz**

**P9 – UMB – Norway - Meuwissen**

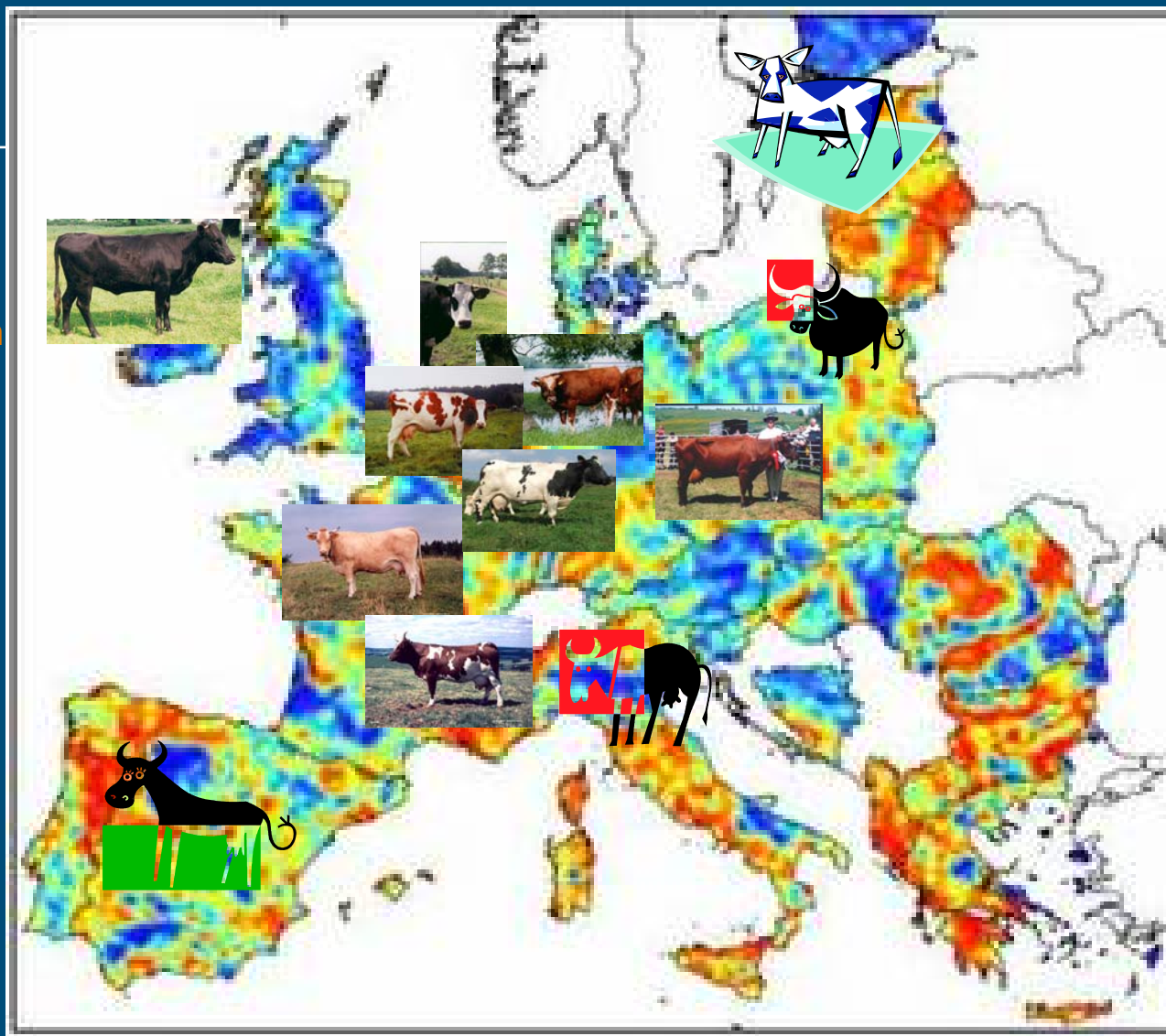
**Further involvement of:**

- **ERFP National Coordinators AnGR**
- **Many stakeholders**
- **Specific expertise**

Centre for Genetic Resources, the Netherlands

Diversity in landscapes

Diversity in cattle



Centre for Genetic Resources, the Netherlands

# BREED CASES – NL ?



Groninger  
Blaarkop

Groningen  
Whiteheaded



Maas Rijn  
Yssel

Meuse Rhine  
Yssel

Brandrood

Deep Red

Centre for Genetic Resources, the Netherlands

# Detailed Breed Case Studies (WP1, G.

## Gandini)

- General picture of the breed (origin, history, geographic, literature)
- Evolution of breed demography and farm profiles
- Evolution of breed productivity (compared to 'mainstream')
- Evolution of country context (developments, institutional, actors)
- Past and current breed development and conservation activities

B

- Survey to farmers (30, as much variety as possible) of the breed: background, farming system, perception/values, context, opportunities, threats  
(closed and open questions)

C

- Stakeholders attitude and values

D

- Overall SWOT analysis for the breed case
- Recommendations, proposals for breed strategy

Centre for Genetic Resources, the Netherlands



# Detailed Breed Case Studies (continued)

## Deliverables:

- Assessment of individual breeds
  - breed reports, national/international publications
- Analysis of data across countries
  - main factors → WP3 (European wide survey)
  - publications

Centre for Genetic Resources, the Netherlands

# Assessment national cryopreservation (WP2-Duclos)

- History and major developments, general organisation of cryoconservation programs/AI, major policies and their objectives
  - Inventory of collections, and analysis by breed/group of breeds for local cattle breeds
  - Analysis by topic
    - Sanitary situation
    - Legal aspects
    - Sampling strategies
    - Responsibilities/actors
    - Funding
    - Other
  - General analysis for the country based on SWOT analysis
- Centre for Genetic Resources, the Netherlands

# WHAT DID WE ACHIEVE SO FAR?




- Starting date: 1 March 2007
- WP1 - Breed cases
  - Development of breed survey methodology, including farmer questionnaire and stakeholder questionnaire
  - Within country data collection
- WP2 - Assessment of cryopreservation of cattle breeds
  - Development of format/questionnaire for country survey
  - Within country data collection
- WP4 - Inventory of available methodologies, tools, software for genetic management/breeding
- Development of website (+ teamsite)  
(<http://www.regionalcattlebreeds.eu>)
- Annual meeting after year1
  - Preliminary results by WP/partner
  - Discuss overall analysis of WP1 and WP2
  - First steps towards questionnaire for European-wide survey of cattle breeds (WP3)

Centre for Genetic Resources, the Netherlands

# Website development

- Internal communication purposes (“teamsite”)
- External website
  - General information, WPs, partners and organisation
  - Country and breed information
  - Multi-language (national and international purposes)
  - Linkages to other relevant sites
    - EAAP Cattle network
    - GlobalDiv (GENRES)
    - Elbarn (GENRES)
    - VAPE (ERFP, in situ conservation)
    - HeritageSheep

Centre for Genetic Resources, the Netherlands



Towards self-sustainable European Regional Cattle breeds

---

<a href="#">Home</a>	<a href="#">Work Packages</a>	<a href="#">Participants</a>	<a href="#">Country and breed information</a>
<a href="#">Contact</a>			

---

### Breed of the Month Archive

**Teamsite:**

- [Partner login](#)

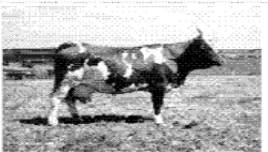
**Publications:**

**News and Events:**

**Links:**

- [Links](#)

**Breed of the Month**



***Dual-Purpose Belgian Blue***

**Herd-Book creation :** 1974

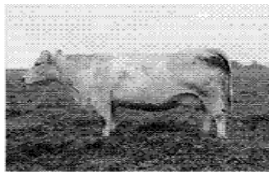
**Nb. Breeding females (2006) :** ~ 4400

**Trend :** Increasing – stable

**Location :** Belgium  
(Regions Walloon (75%) / Flemish (25%))

**Local name :** Blanc Bleu Mixte (BE)  
Bleue du Nord (FR)

[read more...](#)



---

***Villard de Lans Breed***

**Herd-Book creation :** 1979

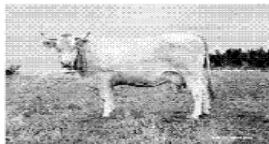
**Nb. Breeding females (2006) :** ~ 340

**Trend :** Stable

**Location :** French Préalps

**Local name :** -

[read more...](#)



---

***Meuse-Rhine-Yssel cattle (MRY)***

**Herd-Book creation :** 1905

**Nb. Breeding females (2006) :** ~ 14.000 (pedigree >87,5%)

s, the Netherlands

<http://www.regionalcattlebreeds.eu>

Centre for Genetic Resources, the Netherlands