

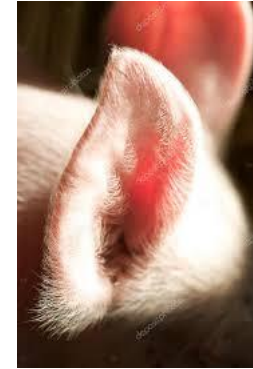
Changes: Risk assessment

WUR: Marion Kluivers, Carola van der Peet, Herman Vermeer, Geert van der Peet, Anita Hoofs

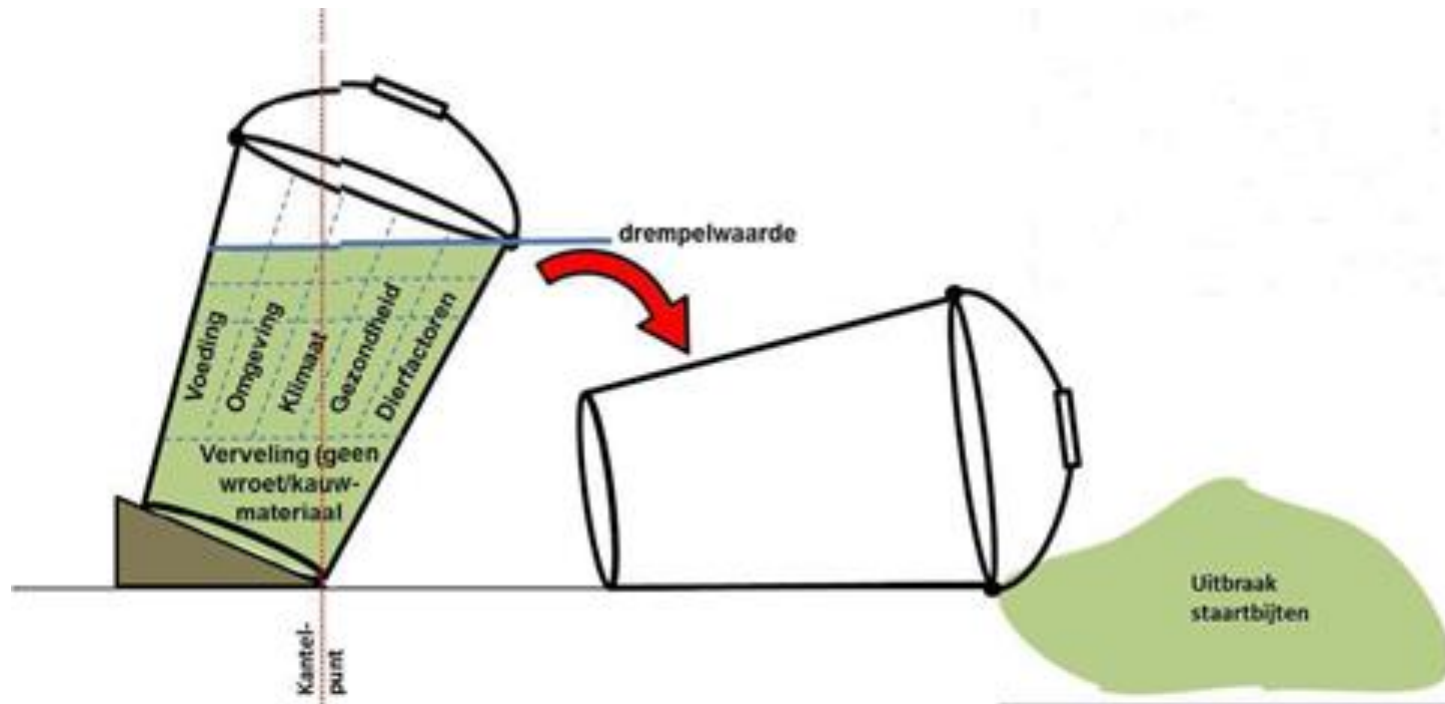
Faculty of Veterinary Medicine: Tijs Tobias



Risk assessment **biting behavior**



Start biting behaviour



Risk assessment biting behaviour

- Aim of development
 - Win situation for the farmer
 - Biting behaviour is a sign of an underlying problem
 - If we reduce biting behaviour we improve animal welfare but often also animal health or production

Risk assessment biting behaviour

■ Objective:

- Insight into risk factors biting behaviour on the concerning farm

- **What is in my bucket?**

- Monitoring instrument

- **Is it going better?**



■ Interaction and cooperation between pig farmer, veterinarian and feed adviser

- All on the same line to achieve goal

■ Important create support of veterinarian en advisers

Risk assessment biting behavior

- Repeatability
 - questions as concrete as possible
 - scientific
- User manual
- Comply with EU requirements
- Additional information digitally available
 - **each question**
 - **why it is important?**
 - **in the farmers language**
 - **recommendations**

WHY?



Eating speed dry feed

- Depends on age
- Eating frequency
 - Rearing pigs 10-12 time a day
- Eating speed (gram per minute)
 - Rearing pigs)
 - 8 kg: 3-4 gram
 - 23 kg: 6-7 gram
 - 0,9 kg feedintake → 2 hours



Number of eating-places and drink places

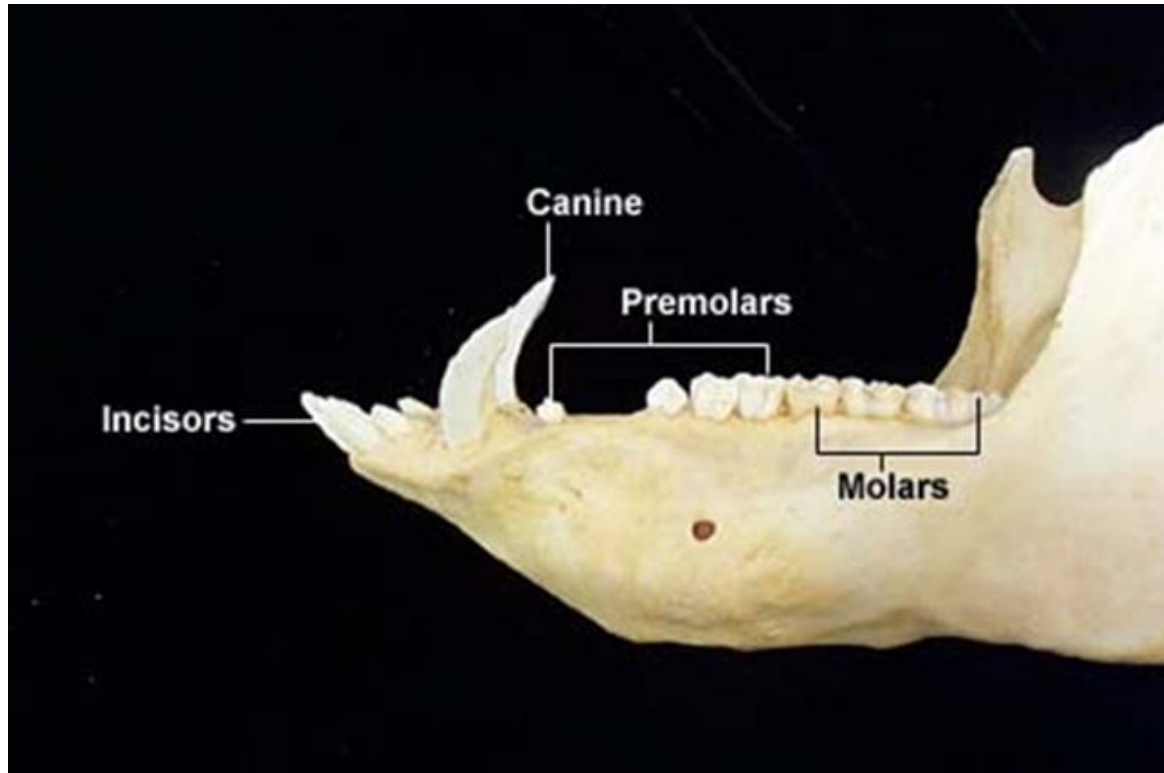
- First 2 days after weaning
 - 1 eating place for 2 pigs
 - 1 drink place for 5 pigs
- Afterwards (till 25 kg)
 - 1 eating place for 5 pigs



Efficiency eating places



Teeth



Tandformule

Melkgebit $\frac{3 \ 1 \ 3}{3 \ 1 \ 3} = 14$

Permanent gebit $\frac{3 \ 1 \ 4 \ 3}{3 \ 1 \ 4 \ 3} = 22$

Tanden ontwikkeling

	Melkgebit	Permanent gebit
Snijtanden	geboorte - 2 weken	8 - 18 maanden
Hoektanden	geboorte	8 - 12 maanden
Valse kiezen	2 weken - 8 maanden	12 - 16 maanden
Echte kiezen		4 - 22 maanden



Risk assessment biting behavior

- Starting point:

- The pig farmers meet the requirements of the Dutch regulations
- Therefore, no questions about risk factors that are already anchored in the regulations

Risk assessment biting behavior

- Per animal category

- suckling piglets
- weaned piglets
- fatteners-gilts



- About 60 questions per animal category

- kitchen table
- compartment 1
- compartment 2

- Time needed 1-2 hours per animal category

Risk assessment biting behavior

■ Question

- Answer can be yes, no, or a number
- Traffic light system
 - If the answer is a risk factor on tail biting in a limited way then the color is orange
 - Is the answer a big risk factor on tail biting then the color is red
 - Is the answer neutral or positive to reduce tail biting behavior then the color is green
- There is no weighting factor between the sections-questions

Risk assessment biting behavior

- Questionnaire
 - Animal based indicators
 - observations on the pigs
 - Start with these questions ` `
 - Non-animal based indicators

Risk assessment biting behavior

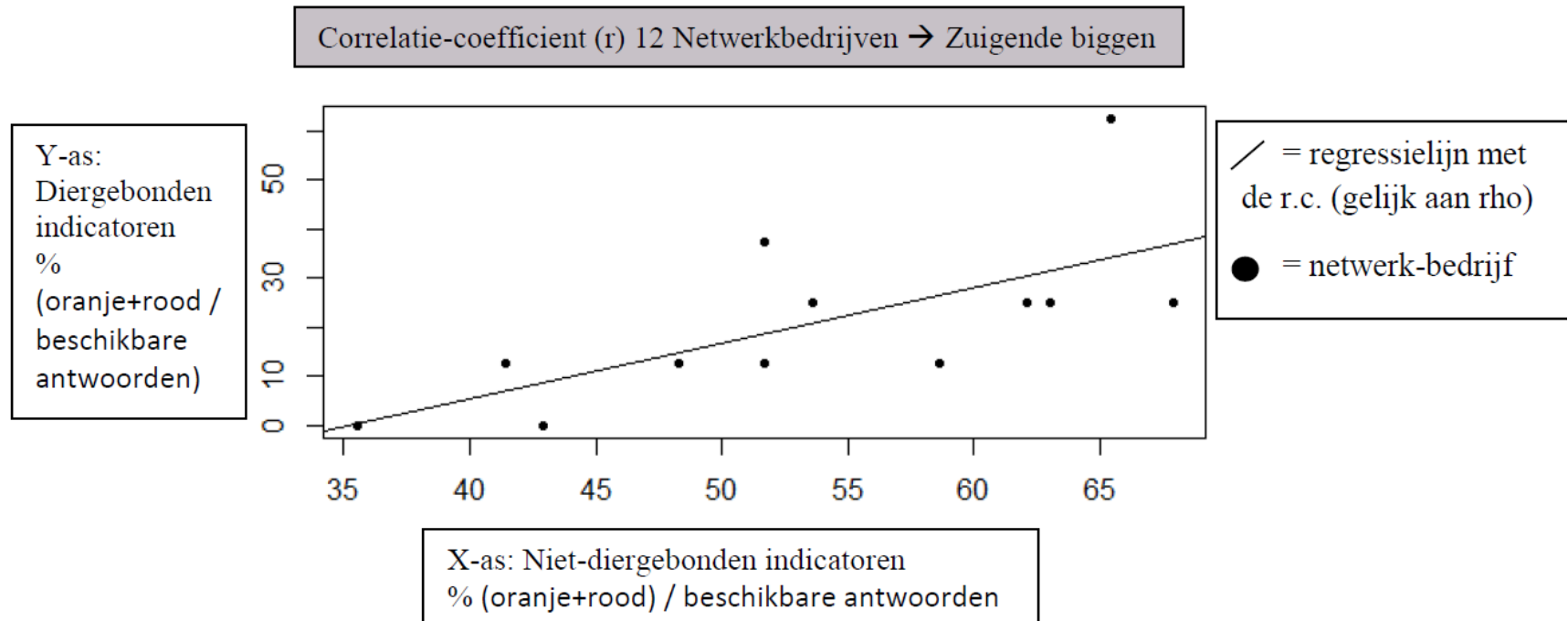
- Animal based indicators
 - Skin and tail lesions
 - Lying behaviour
 - Cornea colour and tear staining
 - Body soiling with manure and urine
 - Too skinny
 - Respiratory frequency



Risk assessment biting behavior

- Not animal bound indicators
 - Enrichment
 - Feeding supply and feed competition
 - food and water
 - Living space and competition
 - Thermal comfort and air quality
 - Hygiene
 - Animal health
 - Animal care taker
- Genetics is not included
 - At this moment no scientific basis

12 farms: suckling piglets



Risk assessment

- 12 farms
 - Significant positive correlation between percentage of non-animal based indicators and animal based indicators in suckling piglets weaned piglets
 - No significant positive correlation between percentage of non-animal based indicators and animal based indicators in suckling piglets weaned piglets

Results pilot 15 farms: process

■ Farmers network:

- Good assessment list
- Added value
 - Fill out together (farmer, veterinarian, feed adviser)
 - Looking at only one subject, you start thinking
 - 1 line
- You should take the time
- Dare to be critical: influence on results
- Added value must turn out later in process
 - Score over certain period of time

Measuring the effect of chances

- Needs a lot more attention



Thanks

