

Food, Nutrition and Health Research Infrastructure - Supporting research on the diet of the future -

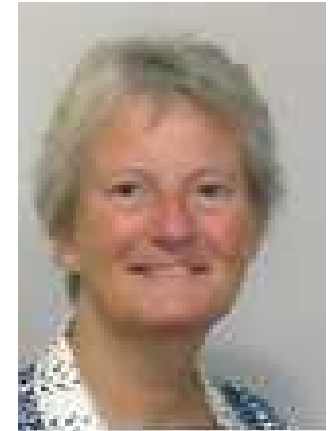
Karin Zimmermann

World Food Summit - Better Food for More People; Theme Food Safety
Denmark, Copenhagen, 2018 31st of August



Biography:

- Karin Zimmermann, BSc karin.zimmermann@wur.nl
- WUR, Wageningen Economic Research,
- Division Consumer and Chains
- Research leader Research Infrastructure Food & Health at WUR
- Vice-chair of the EMB board of European Food, Nutrition and Health Research Infrastructure
- Member of the FNH-RI Dutch national node DISH.nl
- Research interests: marketing, consumer driven product development, innovation
- RM - European expert in marketing



Content

Scientific Domain

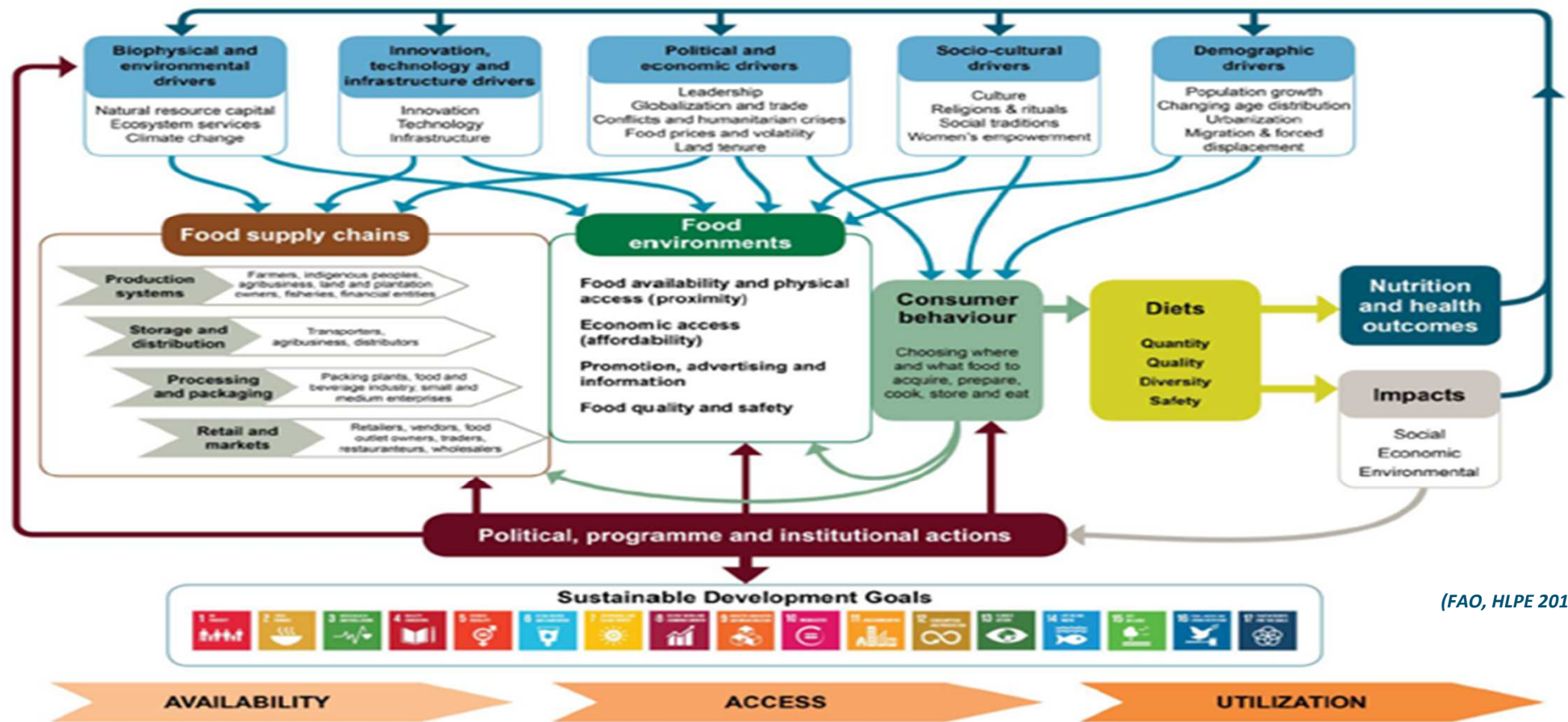
- underpin the design of the future diet for consumer's well being and healthy planet
- consumer as linking pin between food system and health system
- enabling new research paradigms based on big data

Food, Nutrition and Health Research Infrastructure

- enables and serve researchers to develop top level research
- overcomes fragmentation to collate, connect and share innovative and existing research data, tools and labs & experimental facilities
- explain FNH-RI architecture and next steps

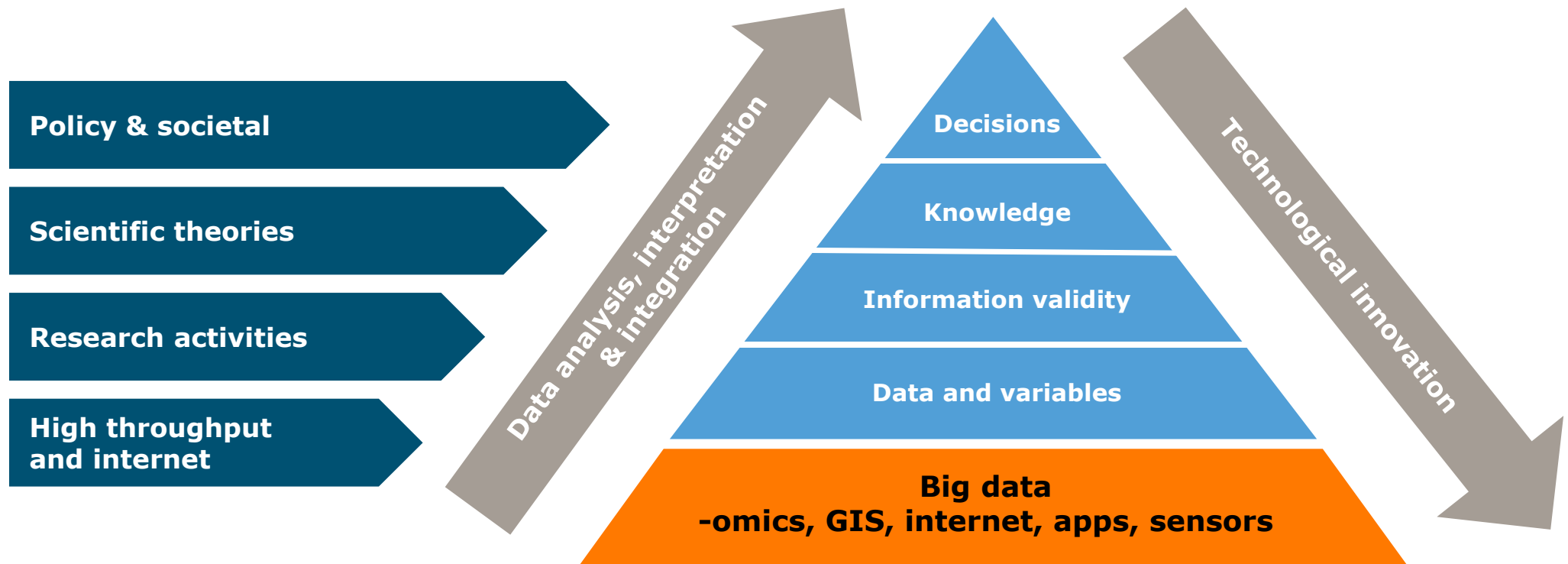
Conceptual framework of food systems for diets and nutrition

Figure 1 Conceptual framework of food systems for diets and nutrition

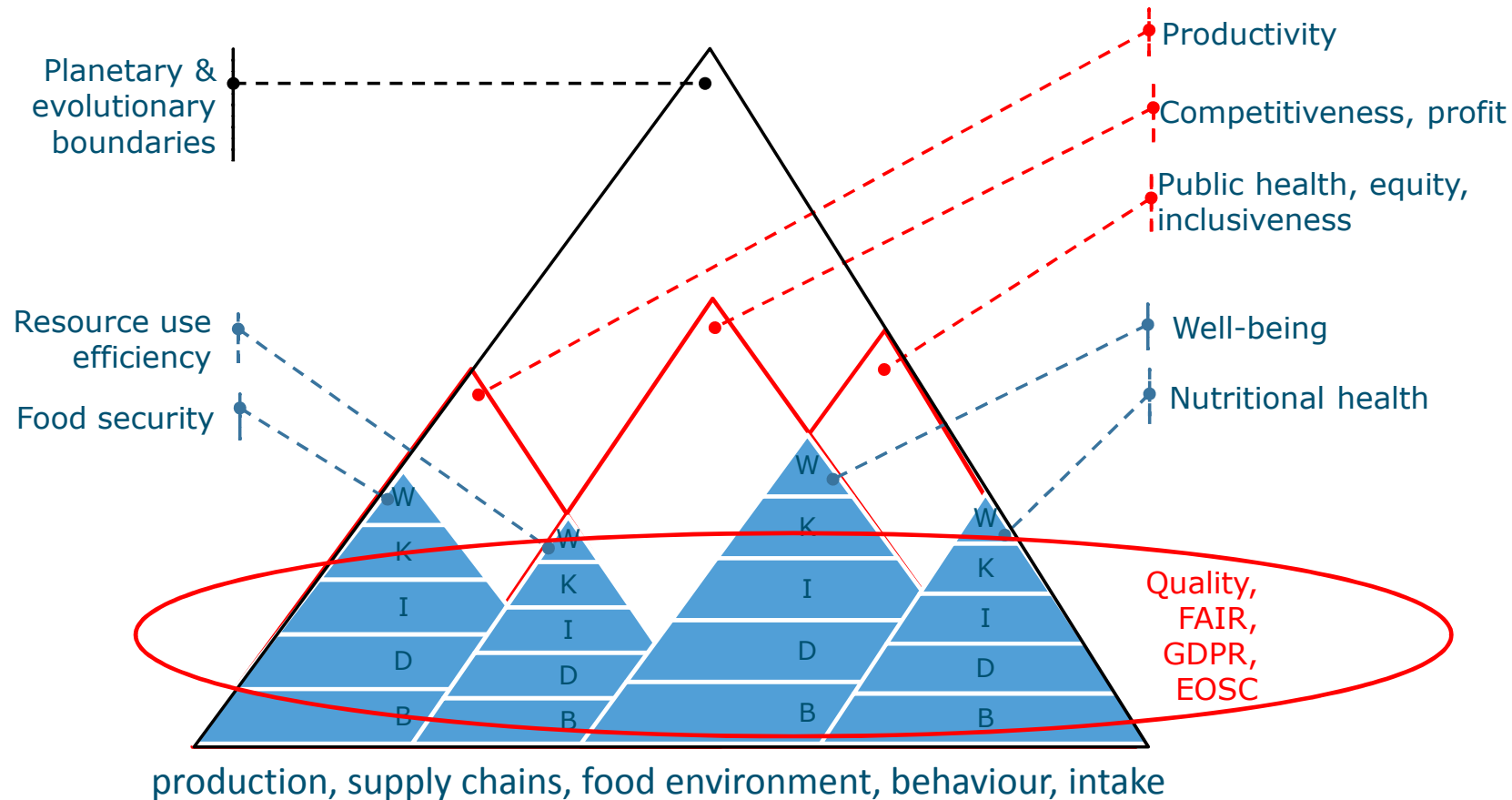


(FAO, HLPE 2017)

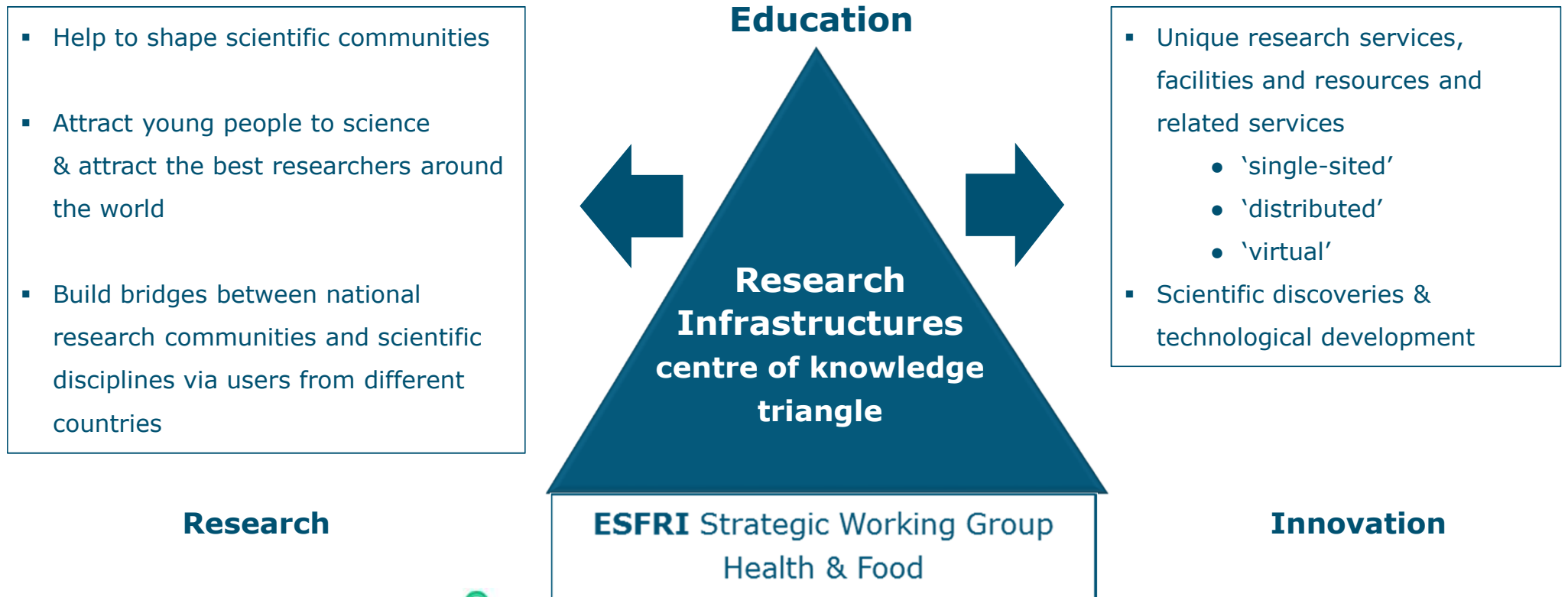
Scientific trends: BIG data & data integration



Need food systems science: Best solutions for subdomains lead to underperformance of system at large



RIs: enabling response to scientific & societal challenges



Food, Nutrition and Health RI

- To enable **top-level research**, breakthroughs and innovations that promote personal, public and planetary health, in innovative and inclusive communities.
- To serve the pan-European research community **to overcome fragmentation** to collate, connect and share innovative and existing research data, tools and labs & experimental facilities.



underpins the design of the diet of the future

FNH-RI Architecture

FNH-RI Services:

Integrating of existing data bases, Graphical interface development, Data sharing, Tools, Models, Dissemination, Training and Education

Food, Nutrition & Health Linked Data Platform

Ontology

Semantic modelling

Meta data

FAIR

Protocols and metrics

Software and tool development

Standards

Harmonisation

Thesaurus

Protocols

Data collection

Labs and facilities

Databases

FNH Consumer Data Platform

Experimental labs

Facilities

Food data

Adjacent RI's

Platforms

RICHFIELDS Research app for data on food- related behaviour of consumers and intake



- Virtual buffets
- Restaurants of the future
- Virtual supermarkets
- Scape lab
- Mood rooms

- Sensory labs
- MRI scan

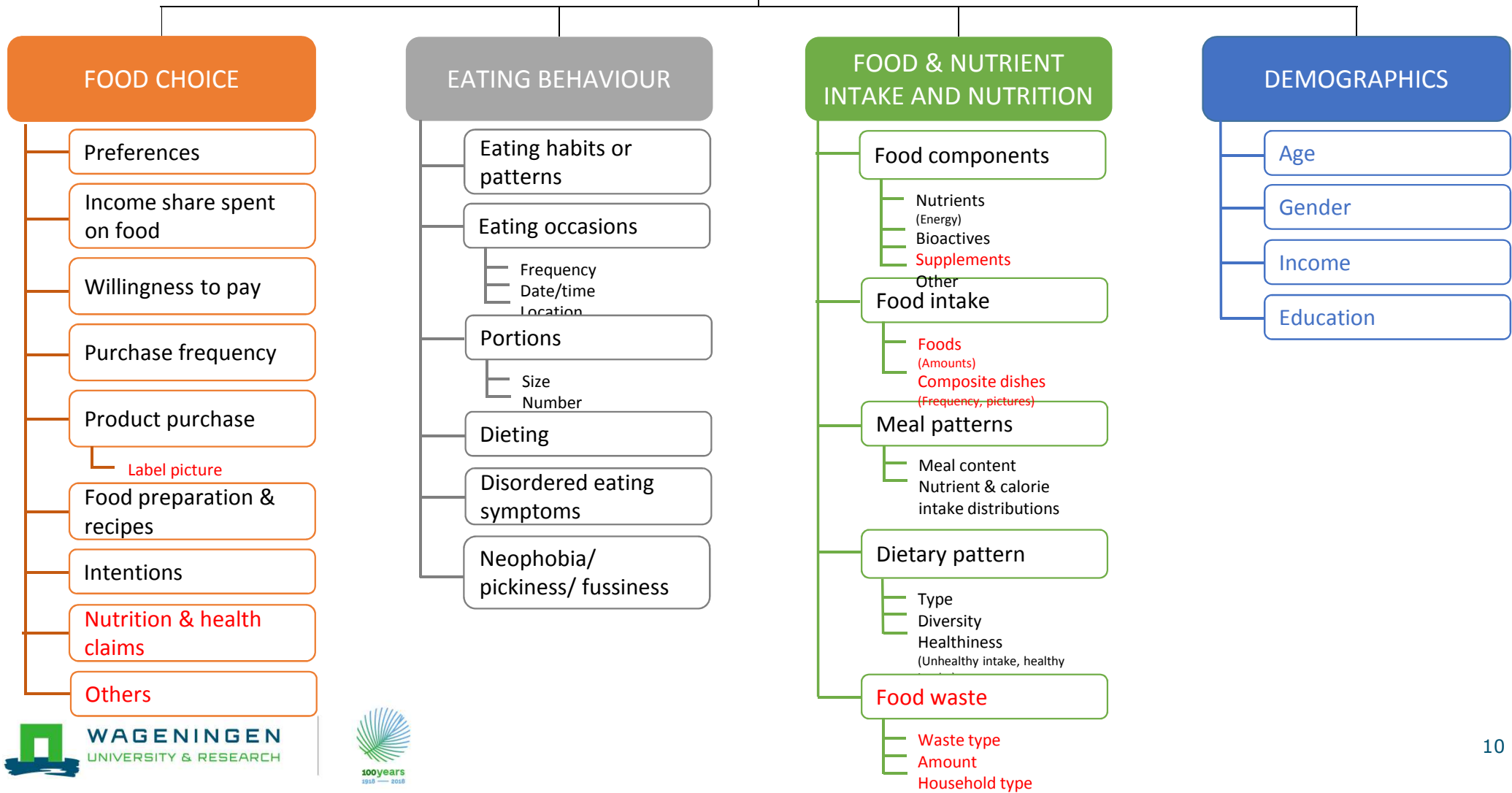
- Purchase
- Preparation
- Dietary intake
- Composition
- LCA

- ELIXIR
- ECRIN
- BBMRI
- METROFOOD

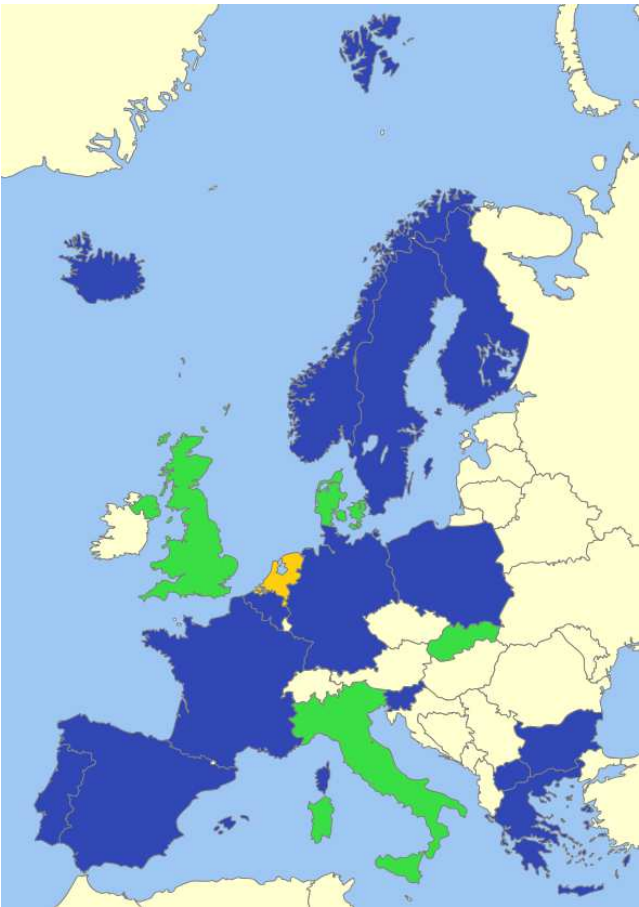
- EUROFIR
- Quisper



- FFQ
- FCMQ
- 24 hour recall

DETERMINANTS OF EATING AND NUTRITION



FNH-RI Consortium



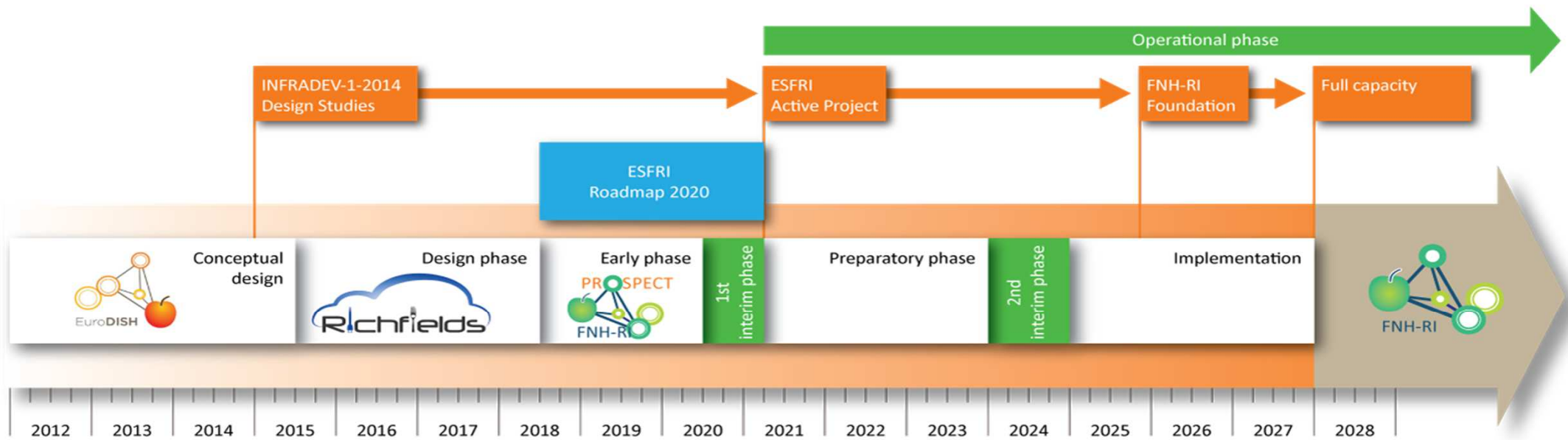
-  Lead country
-  Prospected countries
-  Participants

“Nearest Neighbours”:
Adjacent and emerging RIs

Network of experts
& Knowledge hub

Time line

Time line of the Food, Nutrition and Health RI



On behalf of all partners of the FNH-RI consortium and the partners of EuroDISH and RICHFIELDS

THANK YOU FOR YOUR ATTENTION



FNH-RI will underpin the design of the diet of the future