

Building a research infrastructure for Food, Nutrition and Health Research (FNH-RI) in Europe

Karin Zimmermann, Research Manager FNH Research Infrastructure

WDCC Lunch Meeting 20 maart 2018

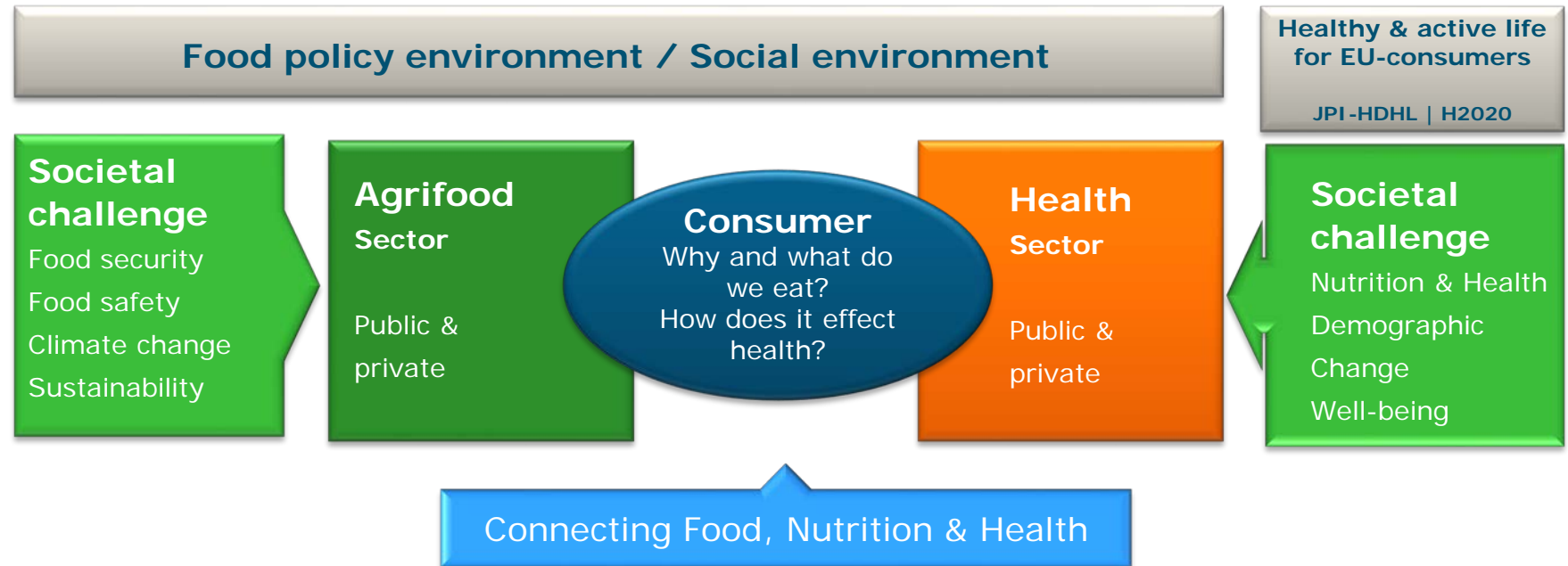


1. Why specific

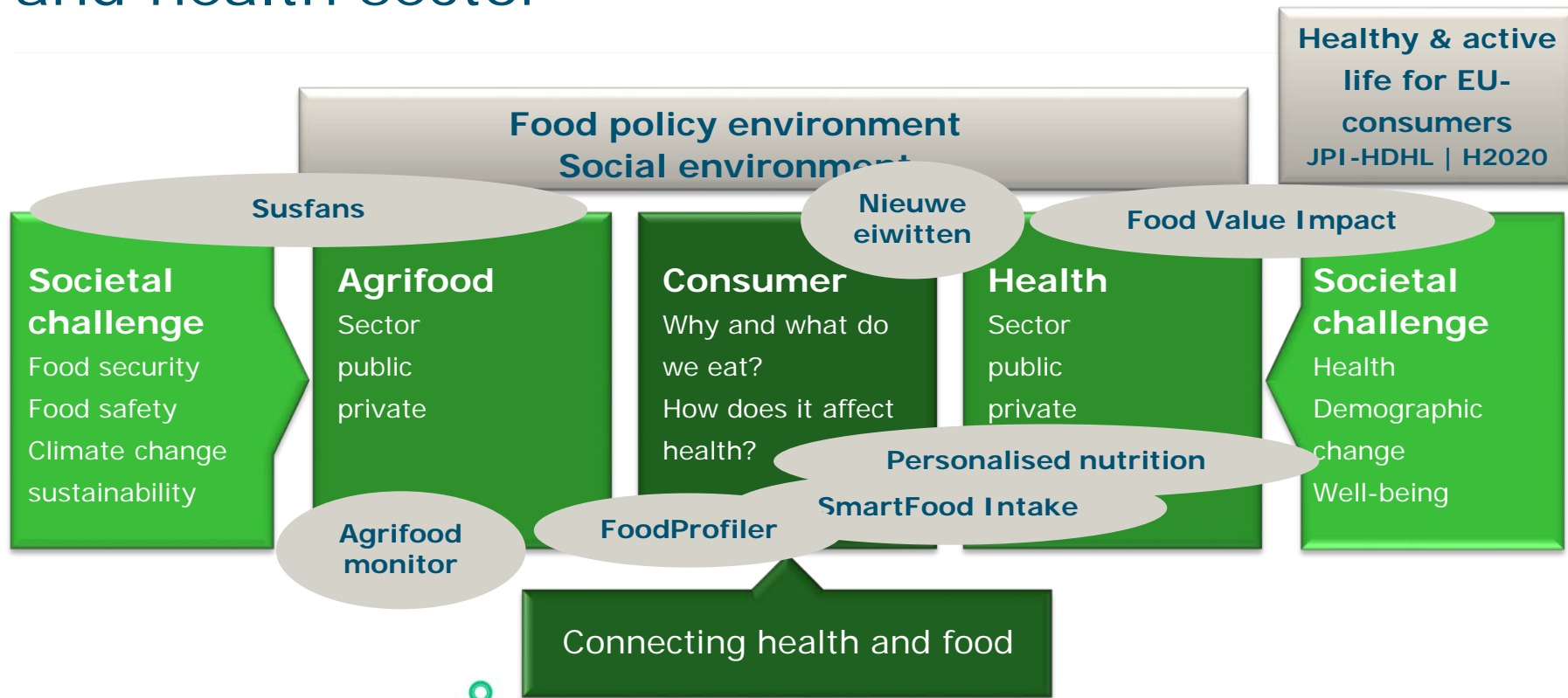
The FNH-RI SCIENCE case



The consumer as link between the agri-food and health sector



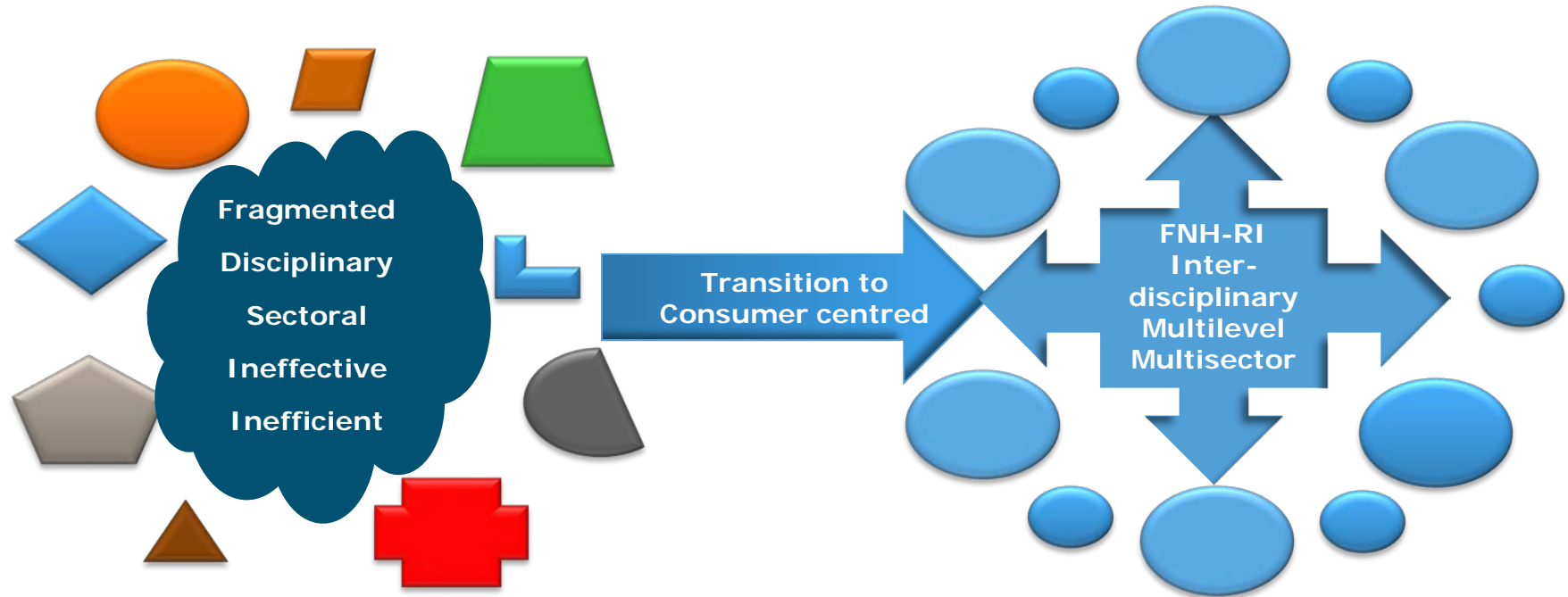
The consumer as link between agrifood and health sector



2. What



Research Infrastructures: overcome fragmentation



Aim of FNH-RI

FNH-RI aims to be an overarching, virtual, integrated research environment to collate, validate, harmonize and connect existing and future research data & tools, labs & experimental facilities.



Potential impact and Breakthroughs

Food system – Protein shift

- Goal: to shift consumer behaviour towards more sustainable, healthy and affordable protein choices
- The ambition of FNH-RI is to facilitate to extend **existing and new data** to improve previous approaches towards sustainable food choices
- FNH-RI facilitates **to combine consumer and food system actor** focus to increase sustainability in food production and consumption



Potential impact and Breakthroughs

Consumer – Smart kitchen

- Goal: Empowered consumers able to make sustained, healthy and sustainable dietary choices
- The ambition of FNH-RI is to facilitate to extend new and existing tools to increased consumer trust **by standardize, harmonize and integrate data for evidence based feedback structures**
- FNH-RI facilitates to combine consumer and Internet- of Things technology e.q., 3D printing and open internet food apps, to personalized his food and health profile

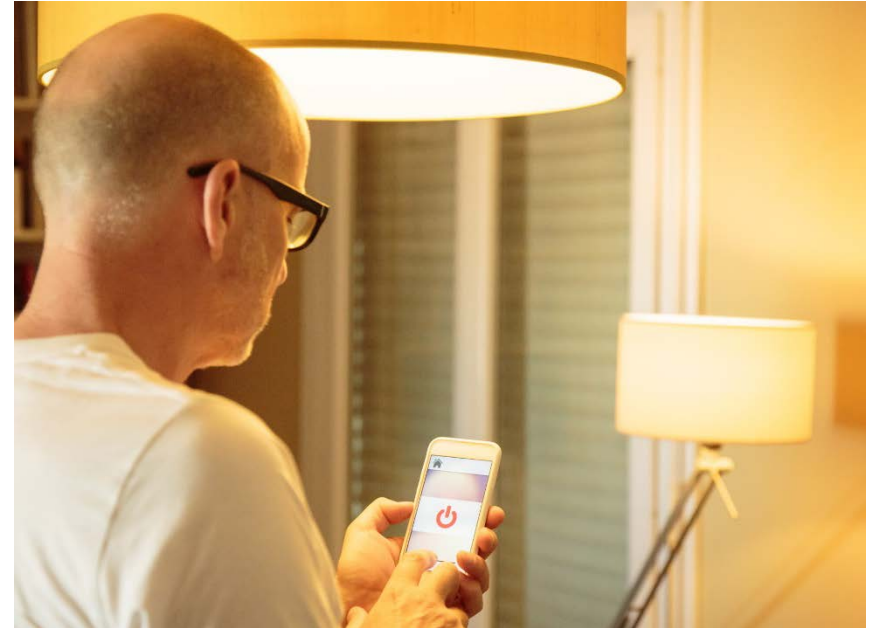


Potential impact and Breakthroughs

Preventive health care system

– Smart home for elderly

- Goal: to reduce the preventive health care cost of moving people to elderly homes. Ageing in place is the mantra.
- The ambition of FNH-RI is to facilitate to extend **existing and new services and knowledge** to improve business models and social innovation.
- FNH-RI facilitates to combine consumer and preventive health care system by provide connect big data and new data to create opportunities for **new algorithms, to find patterns for advance predictions.**



FNH-RI model

Data platform

added value by scientific integration of fragmented and locked data via services to stakeholders

ICT backbone

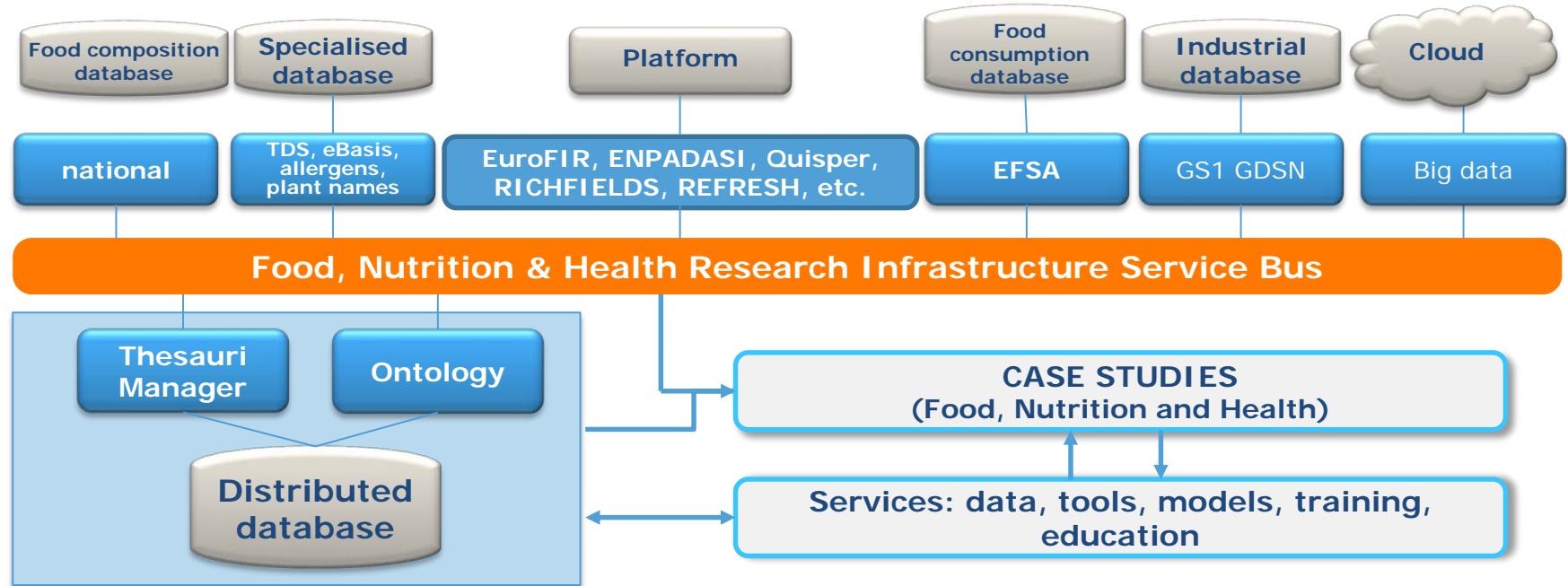
supporting the interoperability of standardization and quality management of data and tools

Governance structure

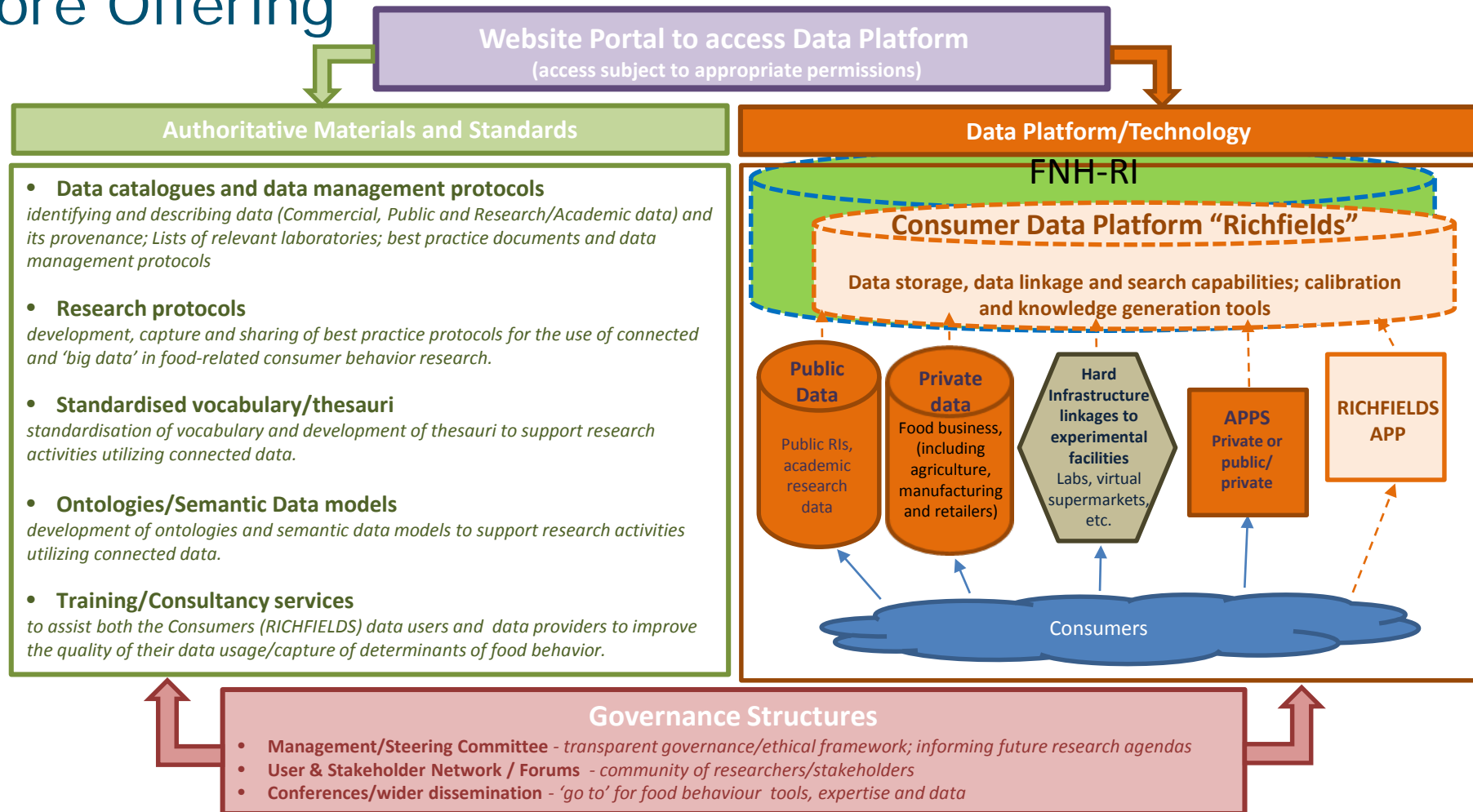
conditions for access, organizes centralized and distributed activities, and enables flexibility regarding innovation within the RI

FNH-RI Platform and interoperability

Conceptual design FNH-RI



Core Offering



3. How



Roadmap

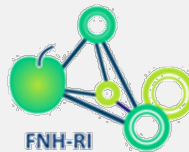
- **ESFRI roadmap evaluation**

- consolidate collaborations (MoU, more countries, EU coverage)

- **EU Member States**

- Preparing FNH-RI consortium for ESFRI-roadmap
- Political & fin support ESFRI roadmap applic (Ministries)
- National roadmaps (DK,NL,IT,UK,FR,SL). Coming up new node 2019

Services & tools in- & external to FNH-RI



- centres for nutrition in EU
- toolbox for trials
- standards for data



- ethics check
- guidance on ethical, legal, and social issues when exchanging data



metrology and standards for food labs on food safety, food quality and food data

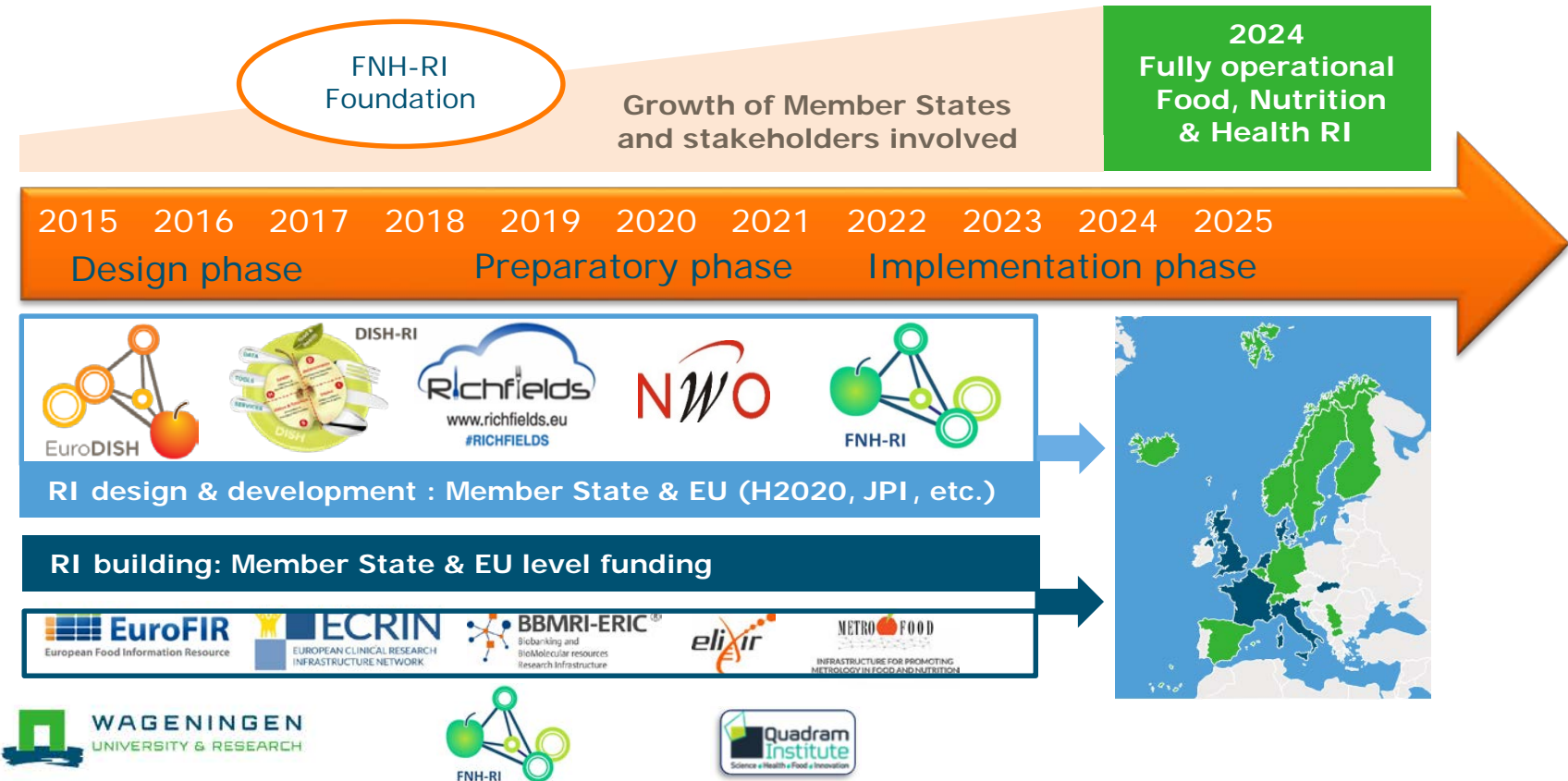


- databases & tools catalogue
- recommendations for data storage/transfer/access
- cloud provisioning



- to ensure sustained advocacy for food information in Europe
- develop, publish and exploit food composition information
- promote international cooperation and harmonisation of standards to improve data quality, storage and access.

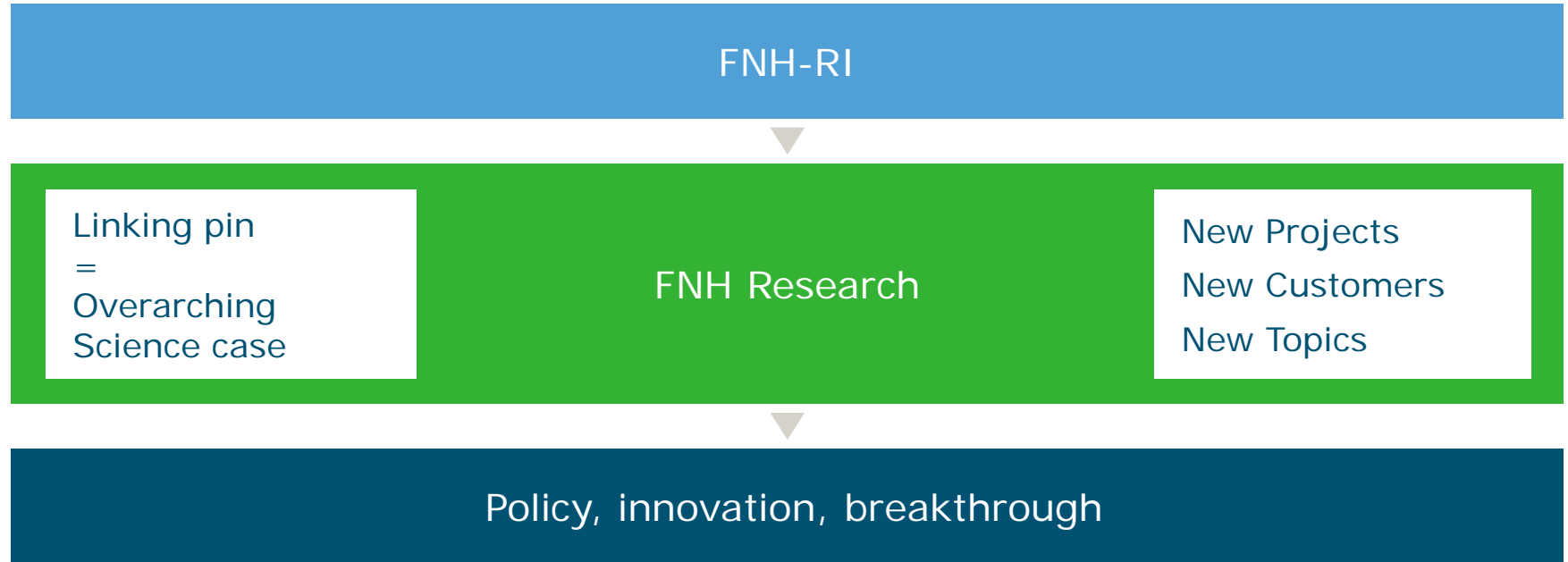
Time line of the Food, Nutrition and Health RI



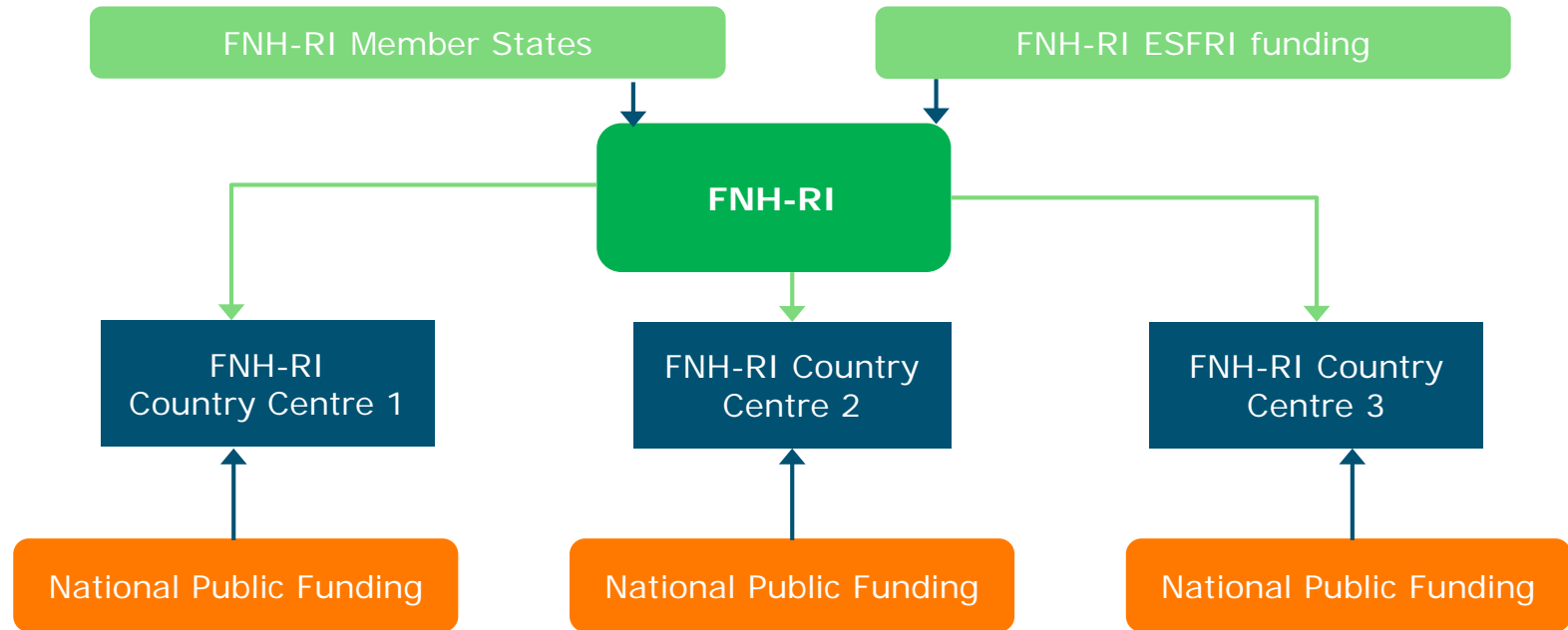
Business model



Business model: science case to innovation



FNH-RI Funding scheme



On behalf of all partners of
the FNH-RI consortium and
its partners from EuroDISH
and RICHFIELDS:

**THANK YOU FOR
YOUR ATTENTION**

