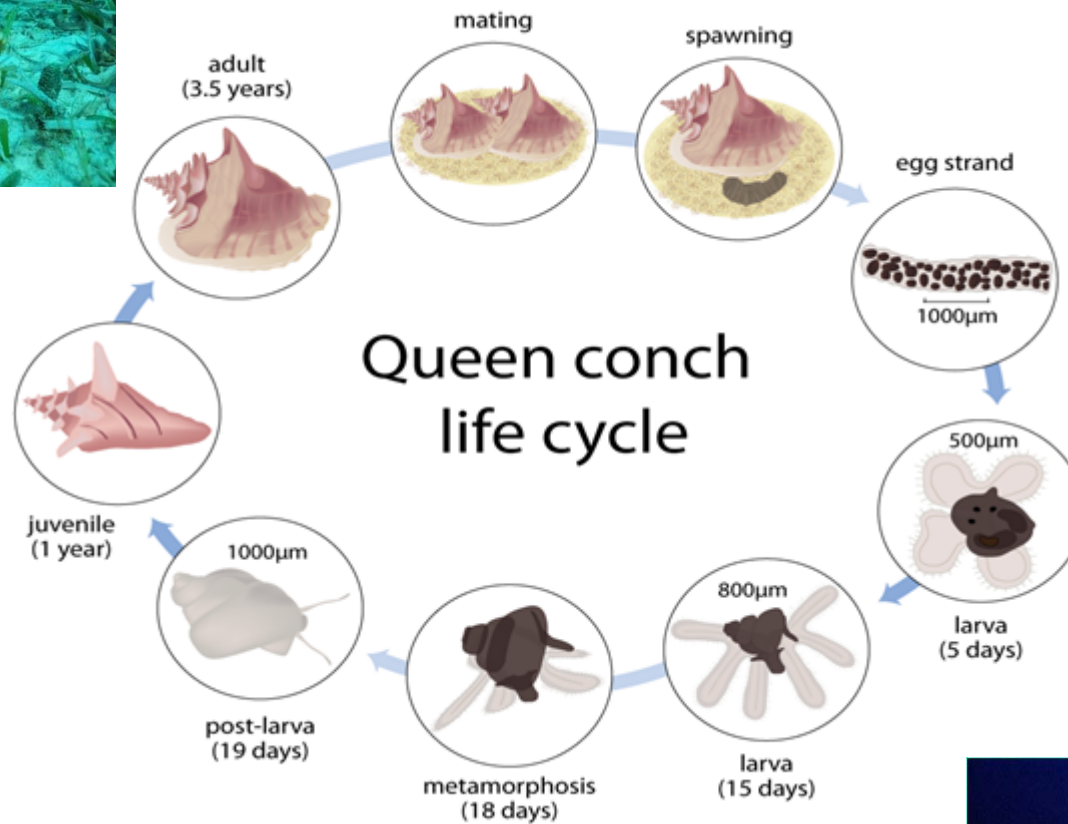

Finding juvenile queen conch at Statia

Sophie Vonk, PhD candidate, Wageningen University



Queen conch (*Lobatus gigas*)



My project

Research goal: develop a population model for the queen conch

Why a population model?

- Queen conch populations are overfished in many countries
- Population models can help fisheries management

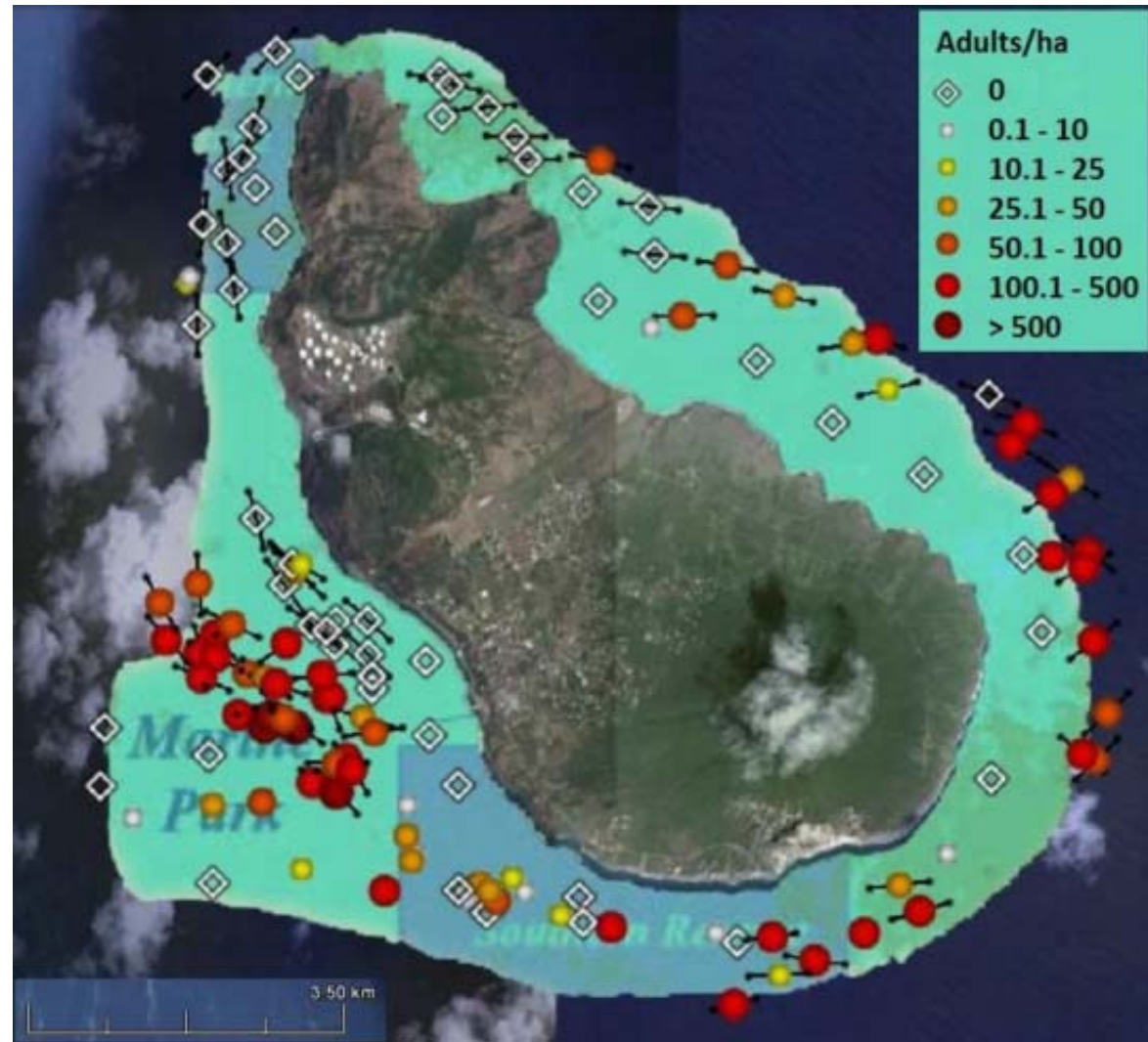
Why at St Eustatius?

- Research program at Wageningen University for sustainable use of small island resources

Queen conch at Statia

Study in 2012:
Many adults
but...

only two juveniles!



Queen conch at Statia

- Why so few juveniles?
 1. They are not there
 - Conch can become 30 years old

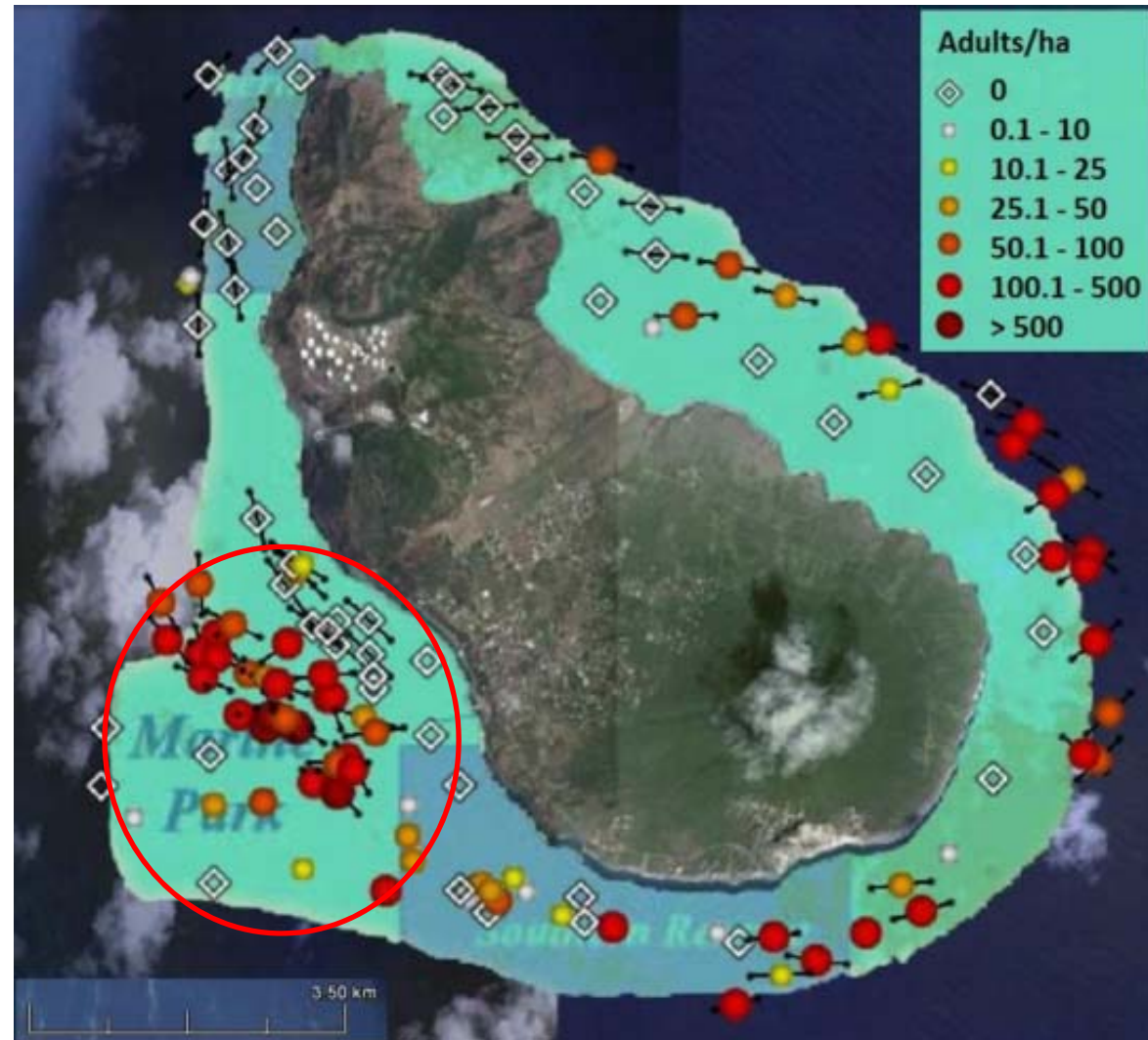
- What could the reason for their absence?
 - Something going on with upstream populations
 - Change in current direction
 - Habitat change

- 2. Researchers haven't been able to find them yet

Searching juvenile queen conch at Statia

Results so far..

Six dives: 18
juveniles, 6 dead



Thanks for your attention!



TripleP@sea KB-14-007

