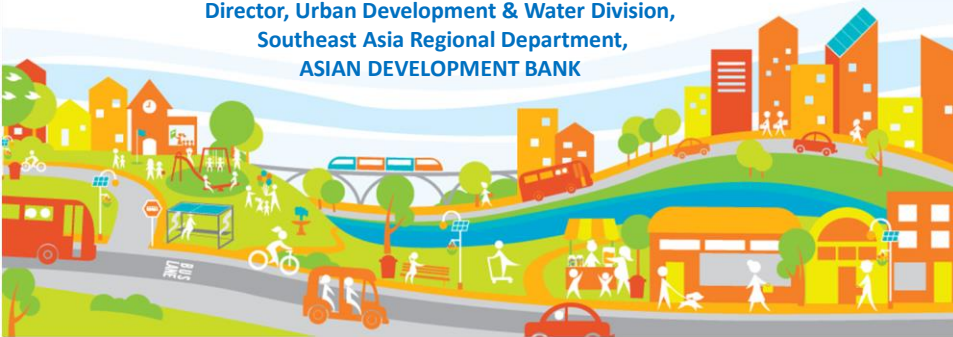


UNLOCKING LEADERSHIP FOR RESILIENT CITIES

Tatiana Gallego Lizon

Director, Urban Development & Water Division,
Southeast Asia Regional Department,
ASIAN DEVELOPMENT BANK



THE RISE OF ASIAN CITIES

PERCENTAGE OF ASIA'S POPULACE
LIVING IN URBAN AREAS



OVER 70%
OF THE REGION'S
GDP
IS DERIVED FROM
CITIES

BY 2020...



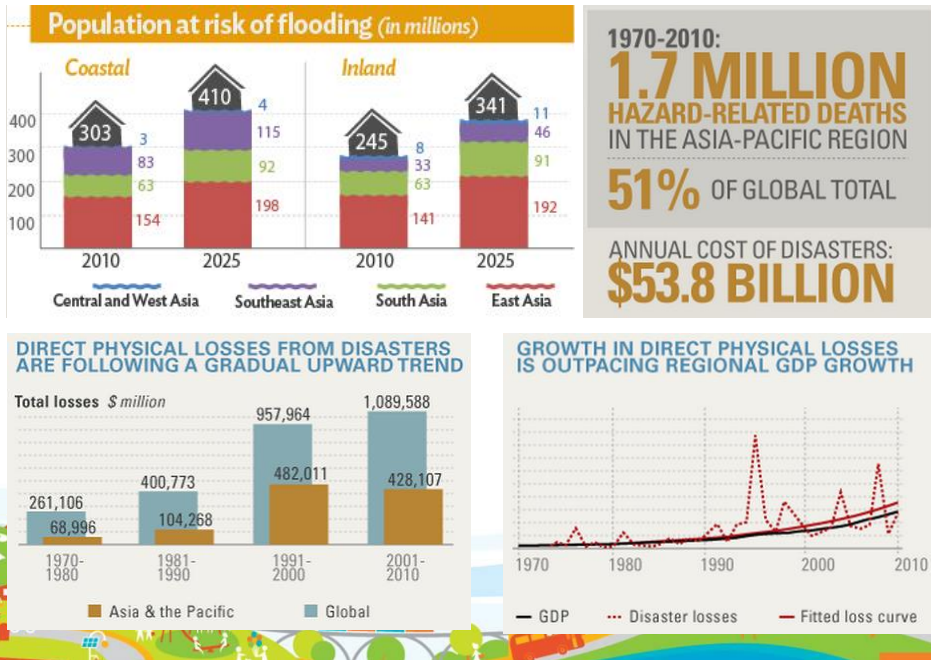
Many of Asia's major cities have been established
in some of the most hazardous locations possible



**MOST ASIAN CITIES
LACK EFFECTIVE
WASTEWATER
TREATMENT SYSTEMS**

**MORE THAN TWO-THIRDS
OF COLLECTED SOLID WASTE
IS NOT DISPOSED OF
PROPERLY**





Why is Leadership Necessary?

- Effective leadership processes and leaders are at the heart of successful and sustainable projects
- Leadership to Influence Change and Managing the Political Process
- Dealing with uncertainty, silos and complexity
- Facilitating and articulating shared visions, aligning resources, motivating and inspiring others



Ek Sonn Chan – Water Sector Leader

- 1993 General Director PPWSA
- Turn around into a leading public utility
- Establishment of new culture:
 - Performance
 - Transparency
 - Loyalty
 - Communication
 - Modernization
- 2014 MIH Under-Secret State

