

Limits to health adaptation in a changing climate

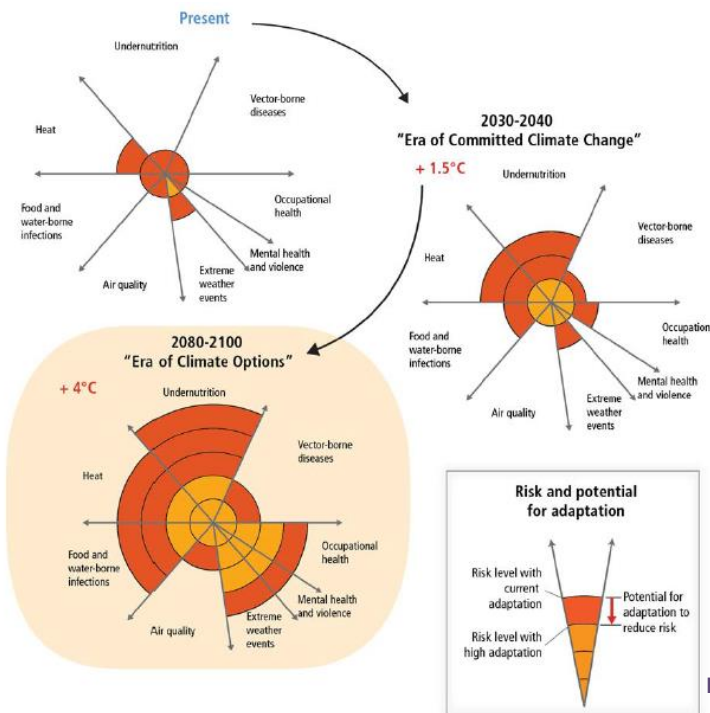
Kristie L. Ebi, Ph.D., MPH

Adaptation Futures 2016
12 May 2016

UW Medicine
SCHOOL OF MEDICINE

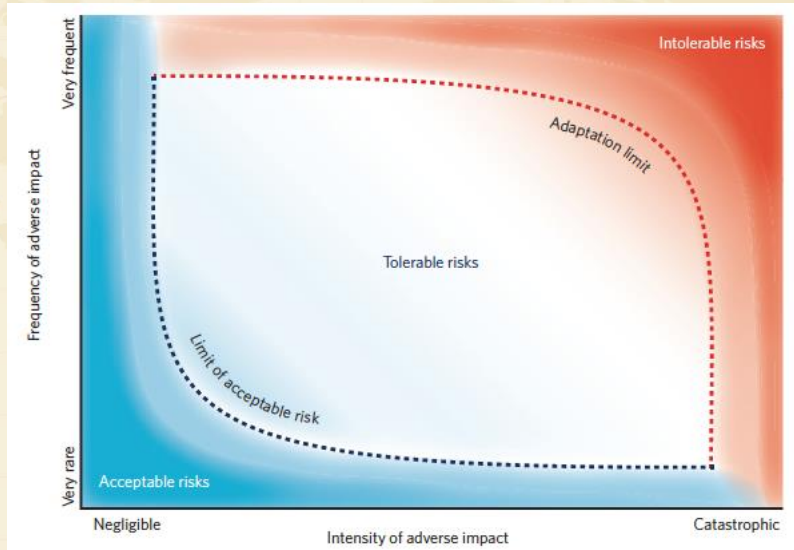
W
DEPARTMENT OF GLOBAL HEALTH
UNIVERSITY of WASHINGTON


SCHOOL OF PUBLIC HEALTH
UNIVERSITY of WASHINGTON



IPCC 2014

Acceptable, tolerable, and intolerable risks



IPCC 2014

Impacts of thermal extremes



Photo: CBS News 2002

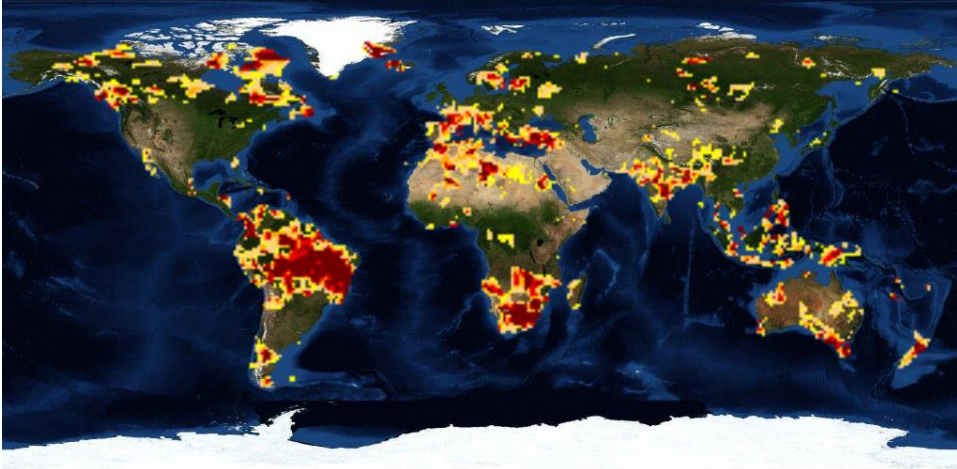
The health impacts of thermal extremes are not limited to mortality. There are significant adverse social impacts with reduced worker productivity.



Photo: BBC News 2000



Drought conditions Feb 2016



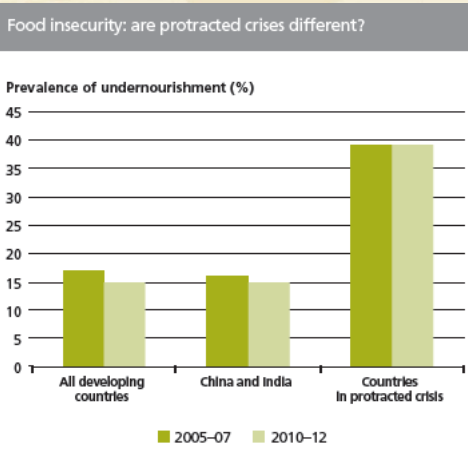
NIDIS Global Drought Information Service

Drought conditions Feb 2016

To Your Health
Zika: More than 2,500 babies born with microcephaly in Brazil, WHO predicts

OUTBREAK!
BRAZIL OLYMPICS ESCALATE RISK OF ZIKA IN U.S.
Estimated 200,000 Americans expected to travel to Rio
Published: 2 days ago

NIDIS Global Drought Information Service

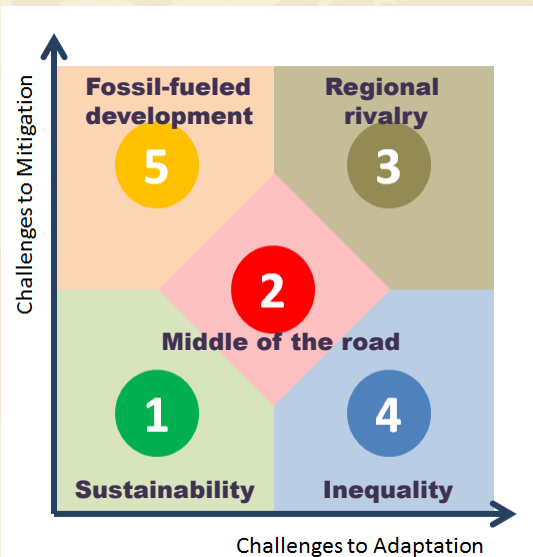


- In 2012, 366 million people in 20 countries lived in protracted crisis
 - 129 million were undernourished or 19% of the global total of food-insecure people
- Prevalence of undernourishment in these countries was 39% compared with 15% for the rest of the world

Typology of crises shifted over the past 30 years to more structural, longer-term, and protracted situations resulting from a combination of factors, especially natural disasters and conflicts, with climate change increasingly among the exacerbating factors

FAO 2015

Shared socioeconomic pathways



O'Neill et al. 2015

