

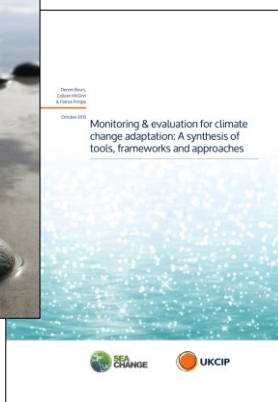
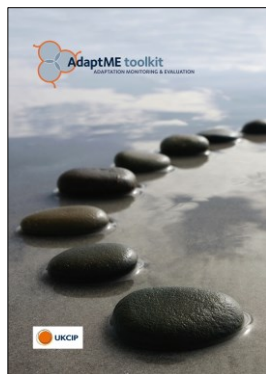


What does transformational adaptation mean for M&E practice?



© UKCIP 2016

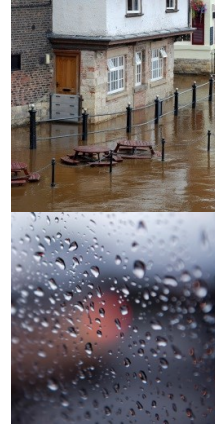
Patrick Pringle, Deputy Director
UKCIP.



© UKCIP 2016

The emergence transformational language

- Growing debate on the need for transformational approaches to climate adaptation
 - Questioning potential limits of conventional and incremental approaches
 - Systems approaching limits and tipping points
 - A contested term...
- Need operationalise the concept for it to be useful
- If we promise transformation we need to provide evidence of its existence!
- Transformational adaptation is 'hard to observe' but 'easier to recognise than define'



© UKCIP 2016

What do we mean by transformation?

“A fundamental alteration of the nature of a system once the current ecological social or economic conditions become untenable or are undesirable”
Nelson *et al.* (2007)

A discrete process that fundamentally (but not necessarily irreversibly) results in change in the biophysical social or economic components of a system from one state to another. Park *et al.* (2012)

Transformative adaptation:
“distinct deliberate changes in practices learning through monitoring and re-evaluation”
O’Neill & Handmer (2012)

Adaptation as transformation:
“fundamental shifts in power and representation of interests and values.” Pelling (2011)

‘Transformational adaptation is usually presented as distinct from incremental adaptation’ Lonsdale *et al.* (2015)



© UKCIP 2011

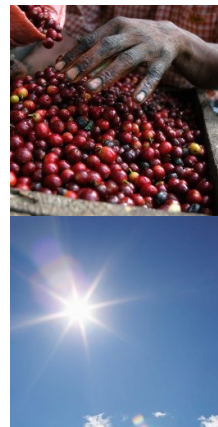
Transformational adaptation is...



© UKCIP 2016

What to track, measure and evaluate?

- The brittleness of system/unwanted regime shifts (if we assume crossing thresholds creates an opportunity/need for transformation)
- The capacity of a system to transform
- Windows for transformation (undesirable system states or policy windows)
- Whether transformation is happening, effective or desirable
- Who are the winners and losers from systemic change? (linked to issues of justice)



© UKCIP 2016

Transformation for M&E practitioners

- Willingness to experiment is a key capacity for transformations (Olsson *et al.*, 2006)
 - M&E must learn from, not inhibit, experimentation
- Transformation needs a structured way to ensure that learning is fed back into the next stage of planning.
 - M&E can help!
- Transformation can create opportunities to reframe understanding and develop of new approaches based on practice
 - M&E must be a reflexive learning tool not just a compliance mechanism
- Learn from practice
 - Incorporating dissonant information or opposing views; wide participation in M&E, inclusion of seldom heard voices



© UKCIP 2016

How can we improve learning through M&E?

- Action-research approaches
 - More closely align M&E, learning and practice
 - Communities of inquiry where theories are built and tested in 'real life'
 - Deepen understanding at the level of the individual, the group and the wider system.
- Learning histories
 - Profoundly enquire into existing examples of transformation
 - Understand multiple, interconnected narratives and perspectives



© UKCIP 2016

Conclusions

- If transformational language is to be useful it needs to be made real
- If we promise transformation we need to provide evidence of its existence
- If we are to be radical, experimental and ambitious we must be better at learning through M&E



© UKCIP 2016

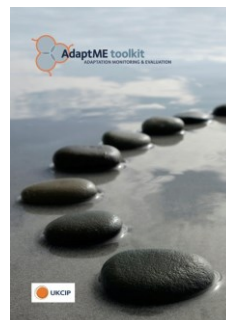
Thank you for listening!



© UKCIP 2016

UKCIP

- AdaptME toolkit - www.ukcip.org.uk/adaptme-toolkit/
- Monitoring & evaluation for climate change adaptation and resilience: A synthesis of tools, frameworks and approaches, 2nd edition. (Bours, D., McGinn, C. and Pringle, P. 2014) <http://www.ukcip.org.uk/creative-adaptation/monitoring-evaluation-reports/>
- Transformative adaptation: what it is, why it matters & what is needed. (Lonsdale, K., Pringle, P. & Turner, B. 2015) <http://www.ukcip.org.uk/wp-content/PDFs/UKCIP-transformational-adaptation-final.pdf>



© UKCIP 2011



www.ukcip.org.uk

© UKCIP 2011