

Socio-economic impact of landing obligation for the Dutch demersal fisheries

28-30 April 2015, Mike Turenhout (LEI) and Jurgen Batsleer (CVO)



Outline Best Practices

- Introduction
- Extra labour on board
- Extra costs ashore (including labour)
- Revenues
- Investment cost
- Conclusion
- Questions

Best Practices: Introduction



Best practices: Introduction

- (Socio)-economic impact landing obligation in the Netherlands
- Extra labour costs on board and ashore before and after innovations, investment costs, potential revenues landed discards
- 3 large (>40 m) pulse beamers, small beamer (Euro cutter) and a nephrops vessel
- Different spatial allocation of fishing grounds

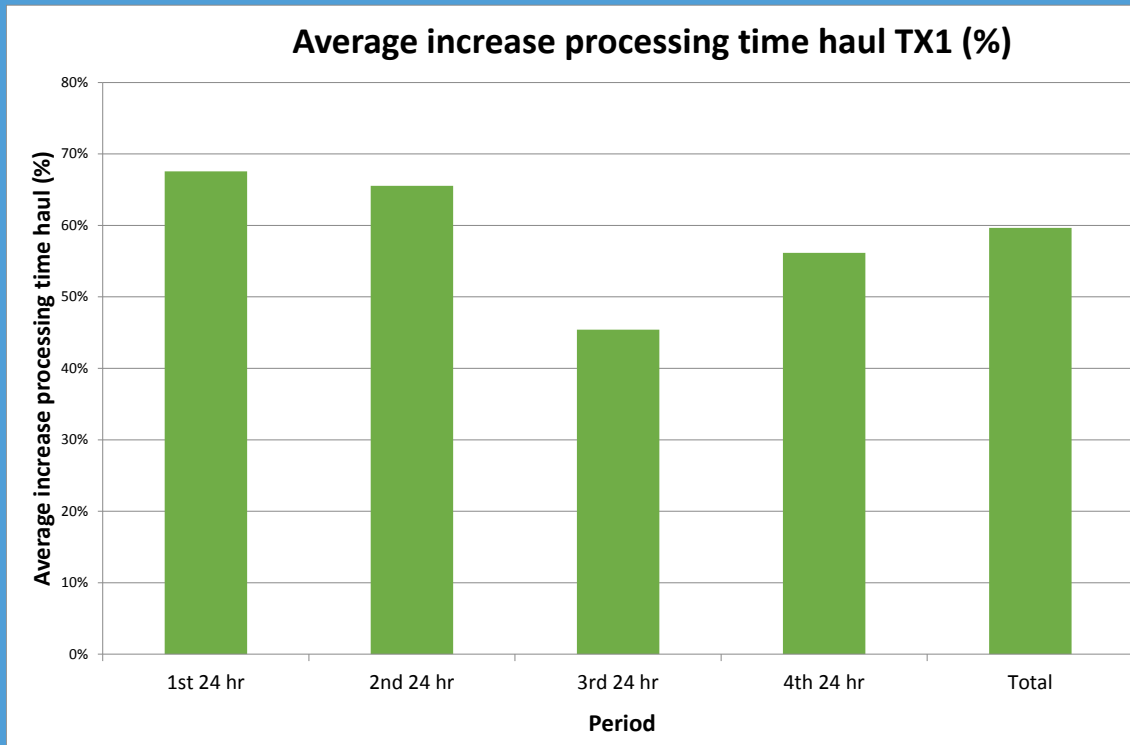






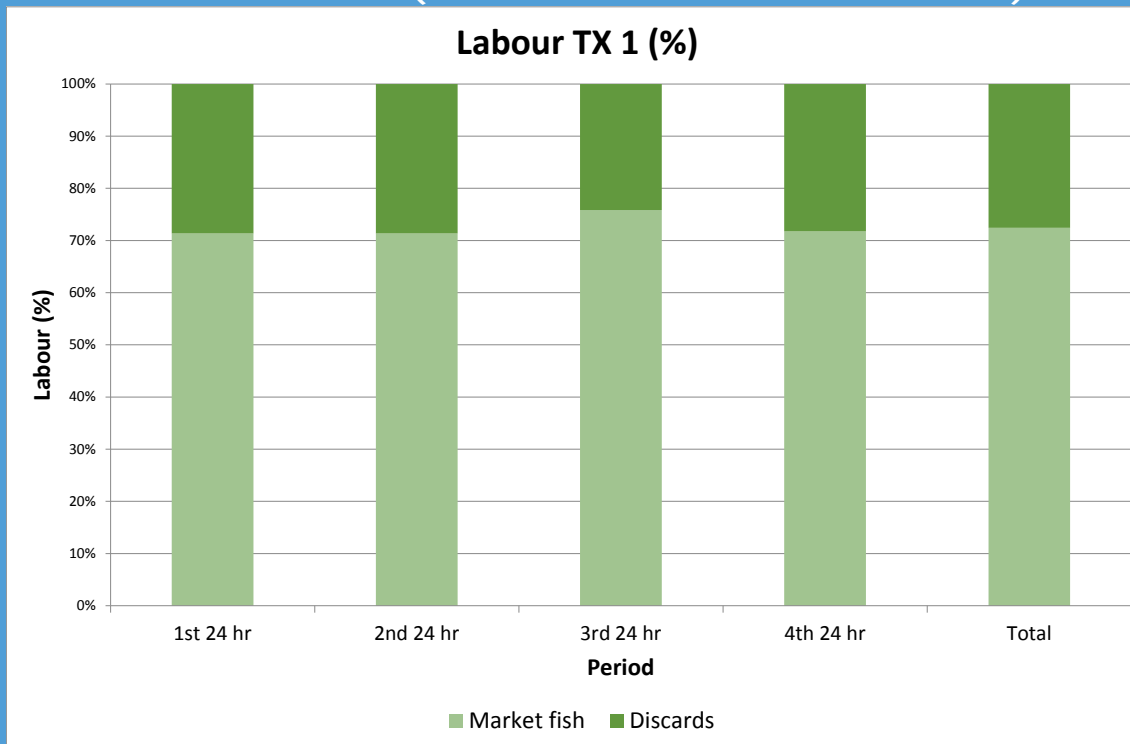
Best practices: Extra labour on board

- Average increase in processing time per haul 50-60%
- Average increase in processing haul of 40 minutes goes to 60-62 minutes



Best practices: Extra labour on board

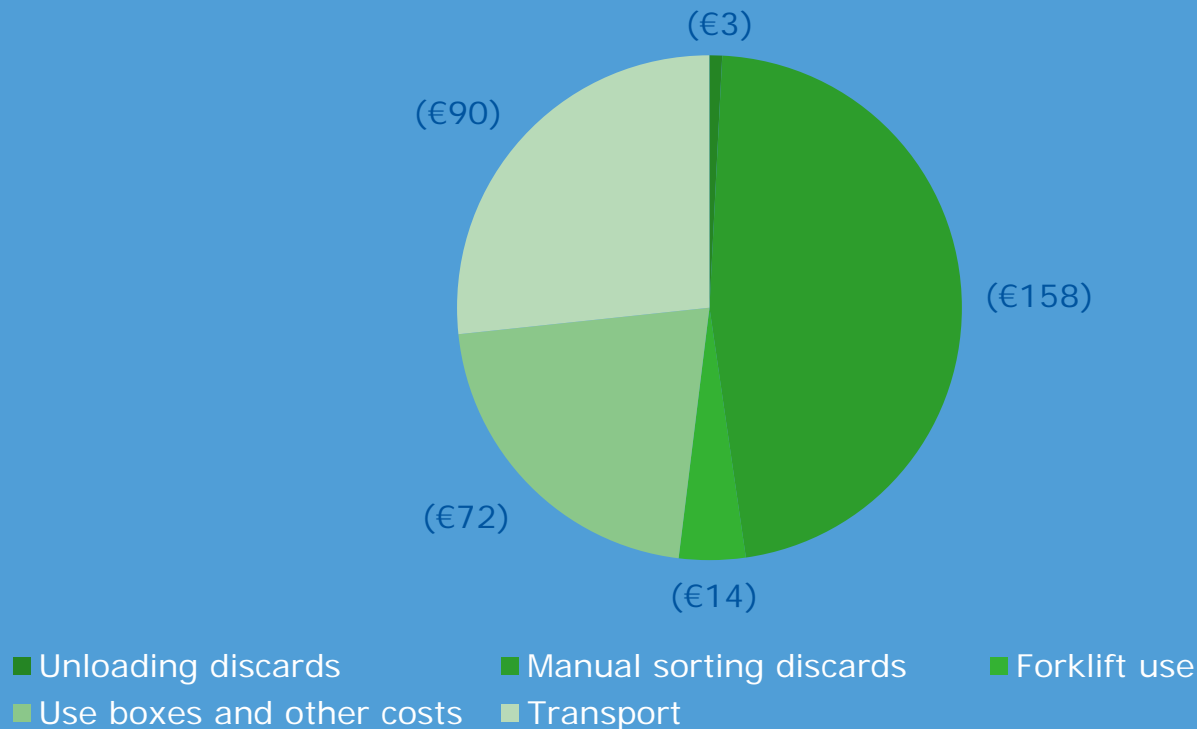
- Average labour increase per trip 28-36%
- Average total labour time processing hauls of 2000 minutes to 2560-2680 minutes per trip
- +1.6-1.8 FTE (for a beamer with 5 FTE)



Best practices: Extra costs ashore

Per 1000 kg of discards costs ashore 310-360 euro

Cost structure processing 1,000 kg of discards on land
(Euro)



Best practices: Revenues

- Market for discards
 - Fishmeal
 - Pet food
 - Indirect human consumption
 - Silage

- Sales price per kg (ex transport) max. 0.20 euro
 - -> max. 200 euro per 1000 kg

Best practices: Investments

- Investments to decrease and monitor unwanted discards:
 - costs not yet known

Best practices: conclusion

- Increase in processing time haul (average 50-60%)
- Increase in total labour time trip (average 28-36%)
 - -> +2 FTE (for a beamer with 5 FTE)
- Extra costs processing discards ashore
 - -> 310-360 euro per 1000 kg
- Revenues discards
 - -> max. 200 euro per 1000 kg
- Investment costs to decrease and monitor bycatch not yet known



LEI

WAGENINGEN UR



Thank you for
your attention.

Questions?

Mail:

mike.turenhout@wur.nl

jbatsleer@visned.nl

