

# Climate change and water conservation effects on vegetation patterns in a stream catchment

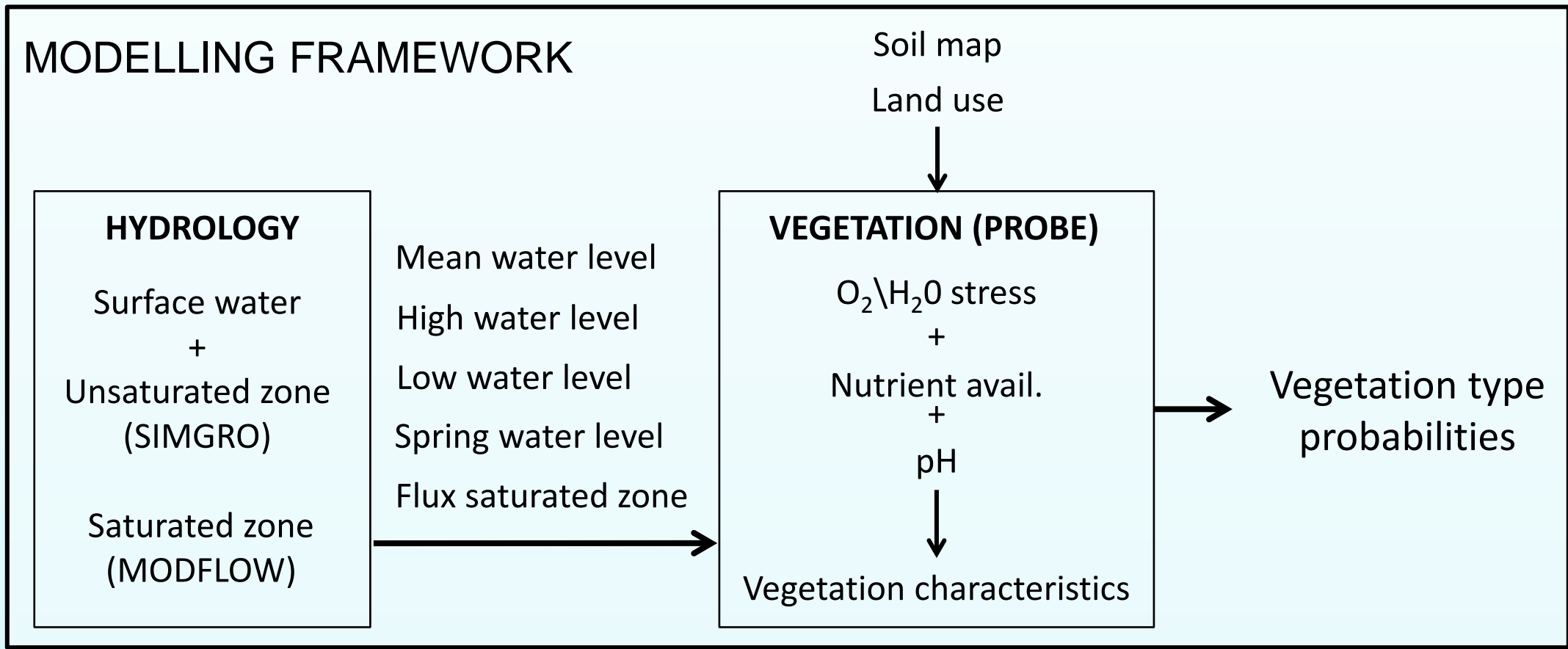
Yasmijn A.M. van der Knaap<sup>1\*</sup>, Myrjam de Graaf<sup>2</sup>, Remco van Ek<sup>3</sup>, Jan-Philip Witte<sup>1,4</sup>, Rien Aerts<sup>1</sup>, Marc F.P. Bierkens<sup>3,5</sup> and Peter M. van Bodegom<sup>1</sup>  
<sup>1</sup>VU University, Amsterdam, the Netherlands, <sup>2</sup>Waterboard Peel en Maasvallei, Venlo, the Netherlands, <sup>3</sup>Deltares, Utrecht, The Netherlands, <sup>4</sup>KWR Watercycle Research Institute, Nieuwegein, The Netherlands, <sup>5</sup>Utrecht University, Utrecht, The Netherlands

## INTRODUCTION

Water availability and groundwater quality are important drivers of vegetation patterns. In temperate Europe, warming and changes in the hydrological cycle are likely to have profound effects on these vegetation patterns. Water conservation measures may reduce the potential negative effects of these changes by providing sufficient water availability and maintaining groundwater quality.

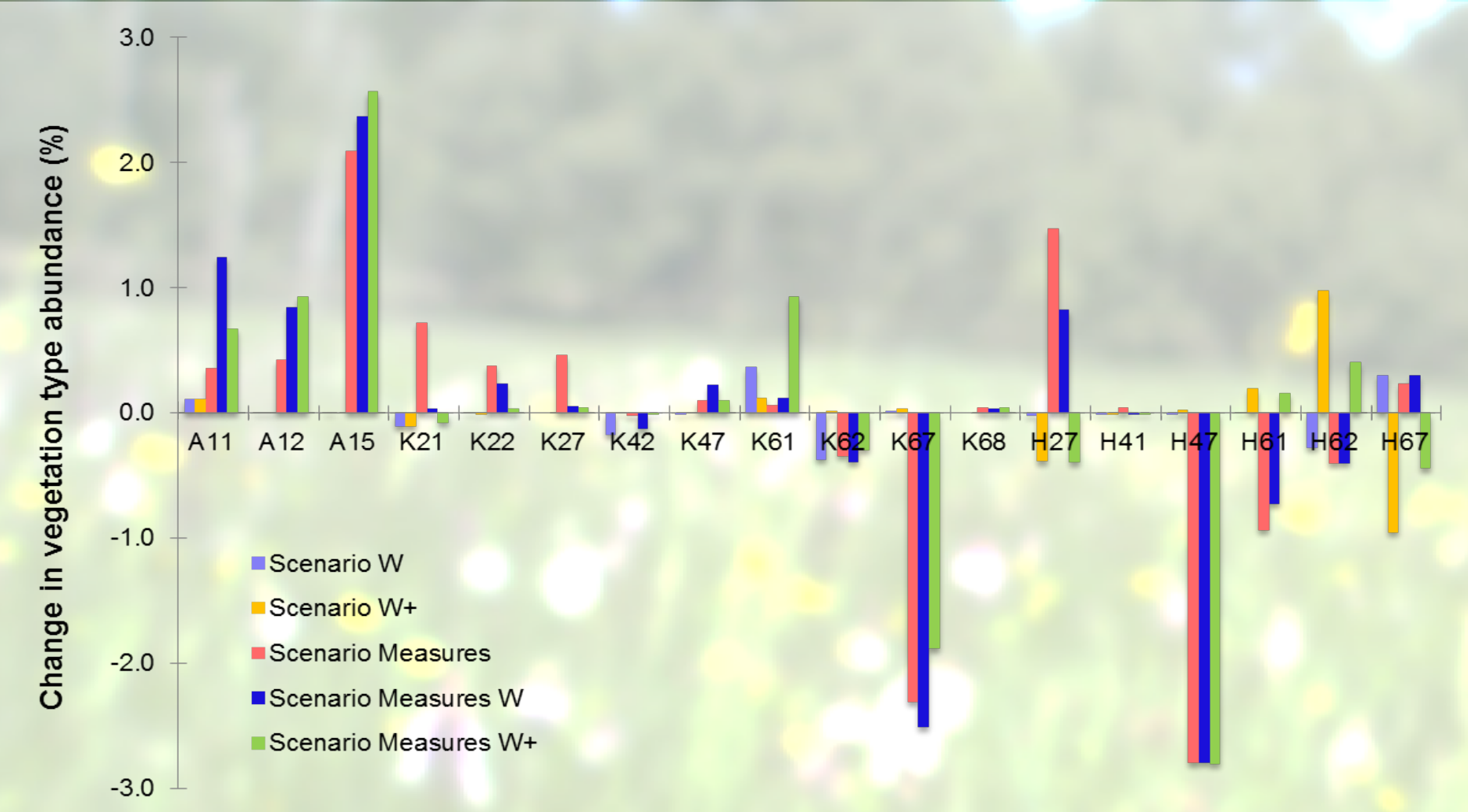
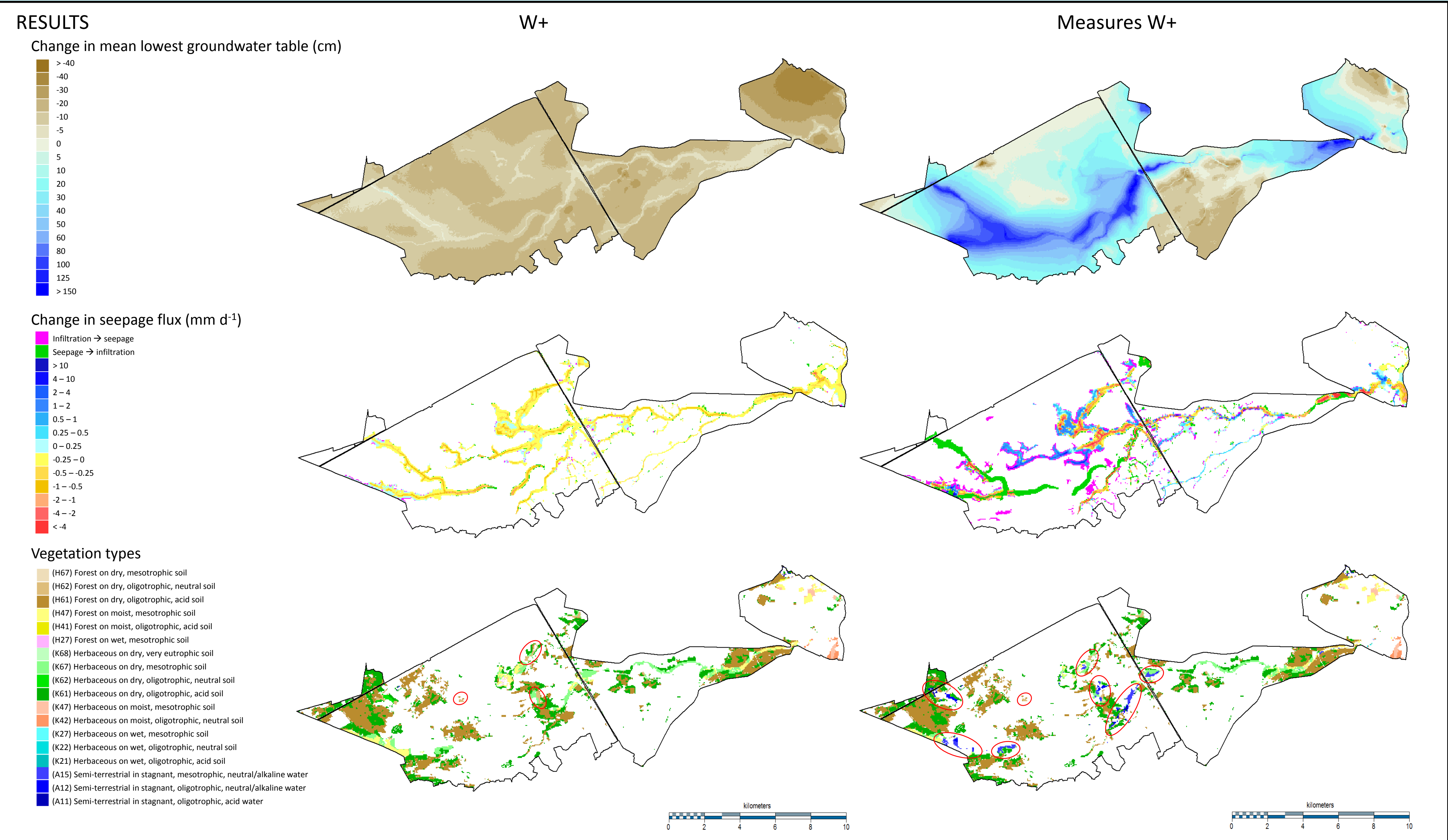
## RESEARCH QUESTIONS

- What is the effect of climate change on water quantity, groundwater quality and vegetation patterns in a stream catchment?
- How are these effects influenced by water conservation measures?



Land Use	Measures
Agriculture	consolidation groundwater extractions, level-regulated pipe drainage, widening water courses, construct weirs, prevent flooding, dam water courses, redirect water courses
Urban	disconnect precipitation from sewers, remove sewage overflow points
Nature	removal small ditches, no drainage, construct impermeable layers, stream restoration, allocate extra nature areas
Stream valleys	meandering streams, no groundwater extraction, no drainage

Climate Scenarios	Precipitation (winter)	Precipitation (summer)	Evaporation
Climate W	+ 7%	+ 6%	+ 7%
Climate W+	+ 14%	- 19%	+ 15%



Scenarios	Lowest (cm)	Highest (cm)	Seepage flux (mm d <sup>-1</sup> )	Seepage area (%)
W	+9	+15	+0.11	+4.6
W+	-12	-3	-0.16	-2.2
Measures	+41	+49	-0.40	-0.4
Measures W	+48	+63	-0.33	+5.5
Measures W+	+27	+46	-0.53	-2.2

## CONCLUSION

- Climate change affects water quantity and groundwater quality
  - Water conservation measures:
    - overruled most of these changes and succesfully increased water availability
    - decreased groundwater quality at certain locations
  - Vegetation patterns changed more when water conservation measures were implemented than under climate change alone.
- This integrated modelling approach is essential when developing succesfull future management plans.



\* Corresponding author: y.a.m.vander.knaap@vu.nl  
Systems Ecology | Department of Ecological Science |  
VU University Amsterdam | The Netherlands |