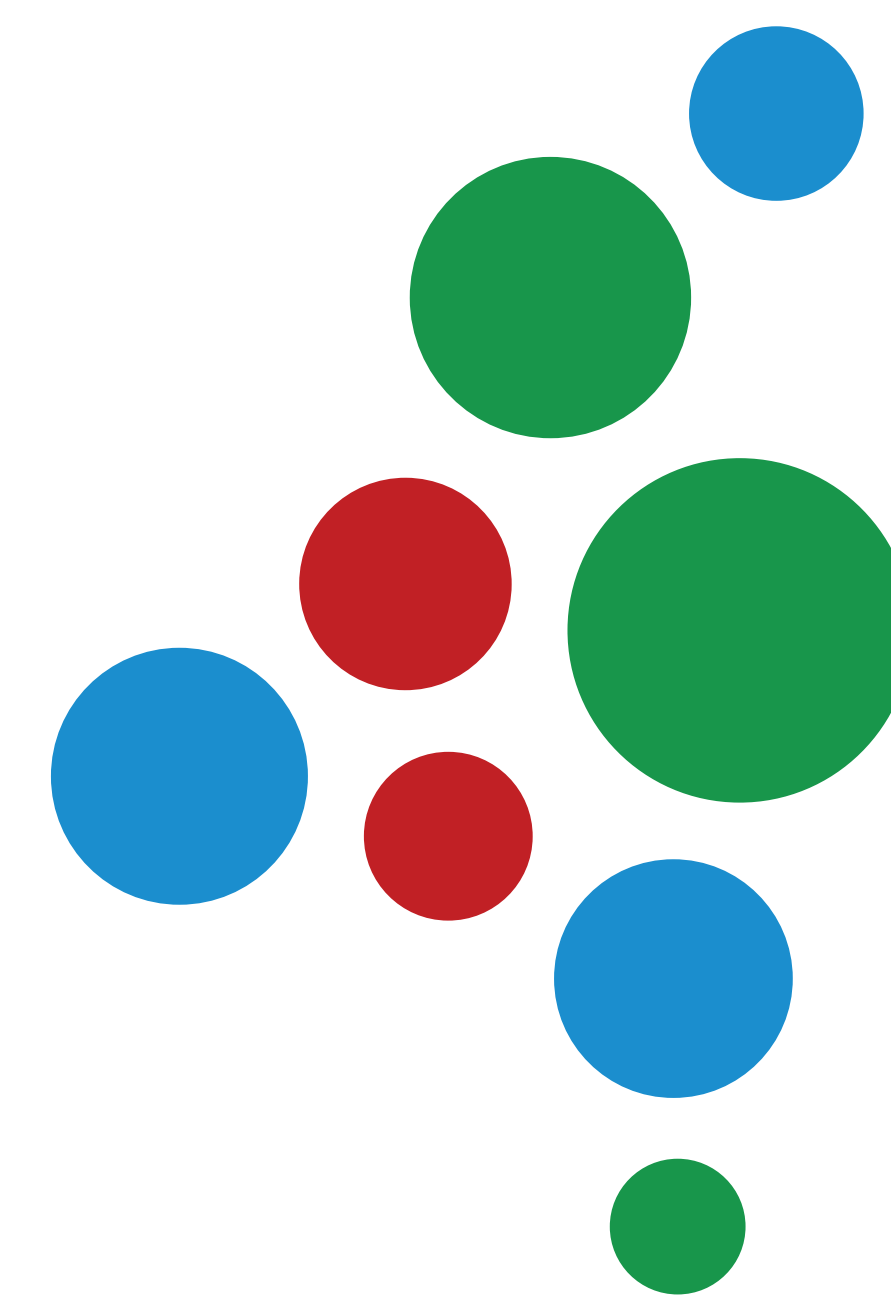


Knowledge for Climate Climate proof cities



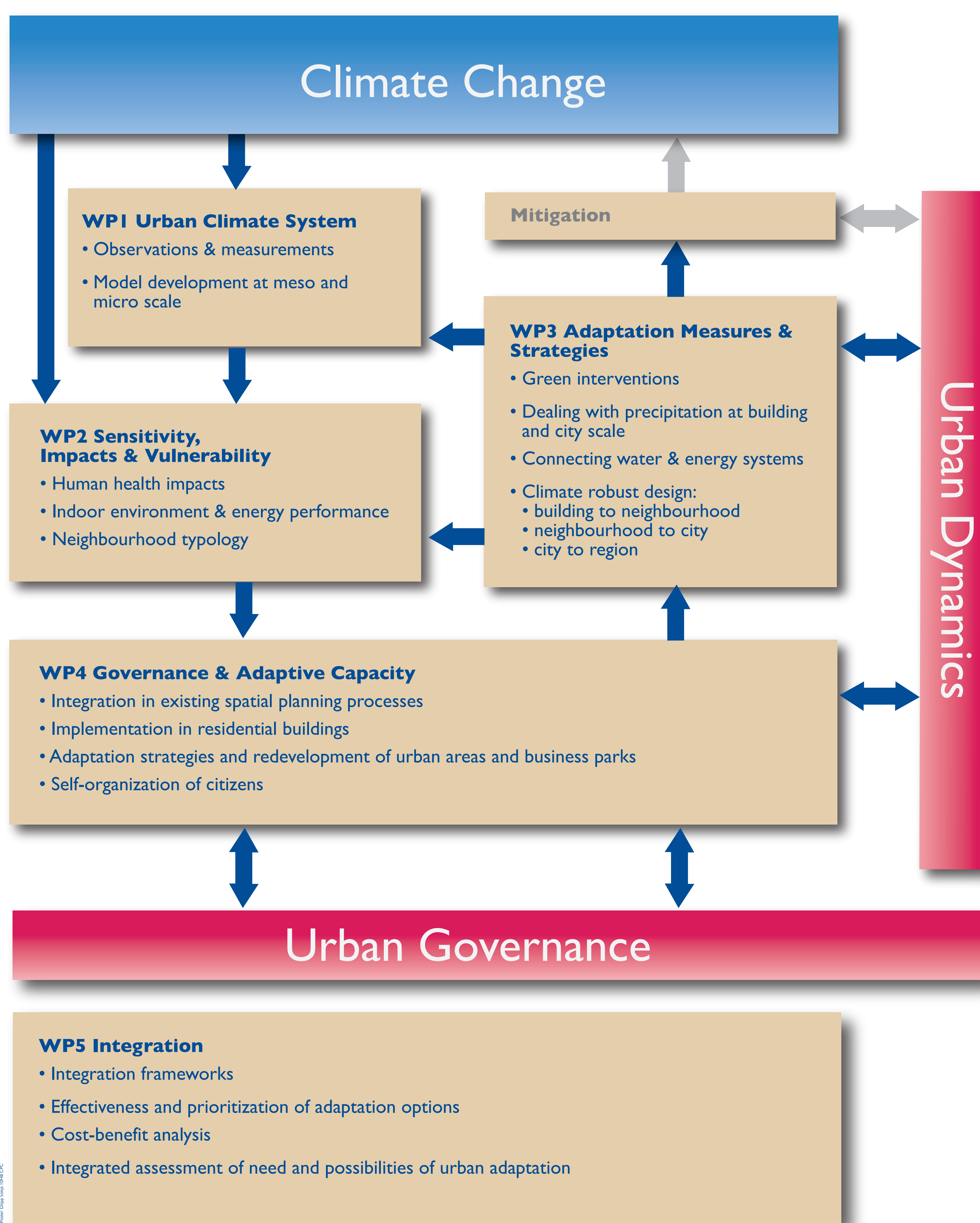
Cities are vulnerable to the consequences of climate change like increased flooding risks, droughts and heat waves. Adaptation of urban patterns, public space, water systems and construction of houses and buildings is essential to make cities climate proof? The Climate Proof Cities consortium develops strategies and policy instruments to strengthen the adaptive capacity of cities.

Research Questions

- How and to which extent do Dutch cities influence the local climate themselves?
- How vulnerable are Dutch cities to climate change and what will be the impacts of future climate change?
- Which measures and strategies are available to improve the adaptive capacity of cities?
- How to implement adaptive measures in urban areas?
- What are the costs and benefits of climate adaptation policies?

Integrated Approach

Climate Proof Cities provide integrated knowledge on the whole chain from urban climate and climate change impacts in cities, to the governance needed for implementing adaptation measures. Projects are organized in five interrelated work packages that largely build upon each other. Research in the work packages is executed in case studies, in close cooperation with Dutch municipalities and water boards.



Research in cross-cutting case studies

- Street and buildings
- Neighbourhoods
- Business parks
- Integral water management
- Climate buffers and city regions

Hotspots and stakeholders

- Hotspot Rotterdam region
- Hotspot Haaglanden region
- Amsterdam
- Brabantstad/Tilburg
- Arnhem/Nijmegen/Tiel region
- STOWA (Applied Water Research)

Foreign research partners

- University of Manchester
- Albert-Ludwigs-Universität, Freiburg
- Universität Kassel

Contact

Ronald Albers TNO
E: ronald.albers@tno.nl

www.knowledgeforclimate.nl/climateproofcities