

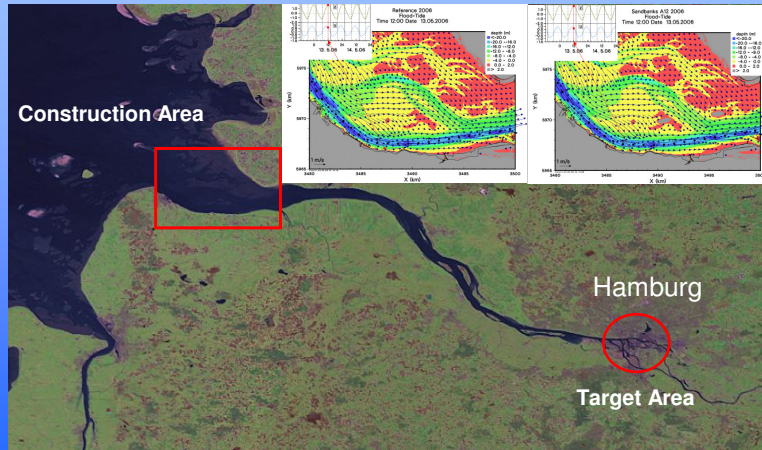


## THESEUS: The Efficiency of Artificial Sandbanks in the Elbe Estuary for Flood Protection

Jens Kappenberg | Hartmut Kapitzka | Janina Marx  
GKSS | Max-Planck-Straße 1 | 21502 Geesthacht  
Institute for Coastal Research | coast.gkss.de



Nino Ohle | Dagmar Much | Thomas Strotmann | Hydrology  
Hamburg Port Authority | Neuer Wandrahm 4 | 20457 Hamburg  
Nino.Ohle@hpa.hamburg.de | www.hamburg-port-authority.de



### Acknowledgement:

The support of the European Commission through FP7.2009-1, Contract 244104 – THESEUS (“Innovative technologies for safer European coasts in a changing climate”), is gratefully acknowledged.